



Control panel with 'DANGER' label and 'START FOAM SYSTEM' button.

Fire alarm pull station with 'FIRE' label and arrow.

START
FOAM
SYSTEM

DANGER
WARNING
High Voltage
Electrical
Equipment
Do Not Touch

FIRE EXTINGUISHER

Black cabinet

Stack of black pipes

Black drainage grate

Diagonal floor markings



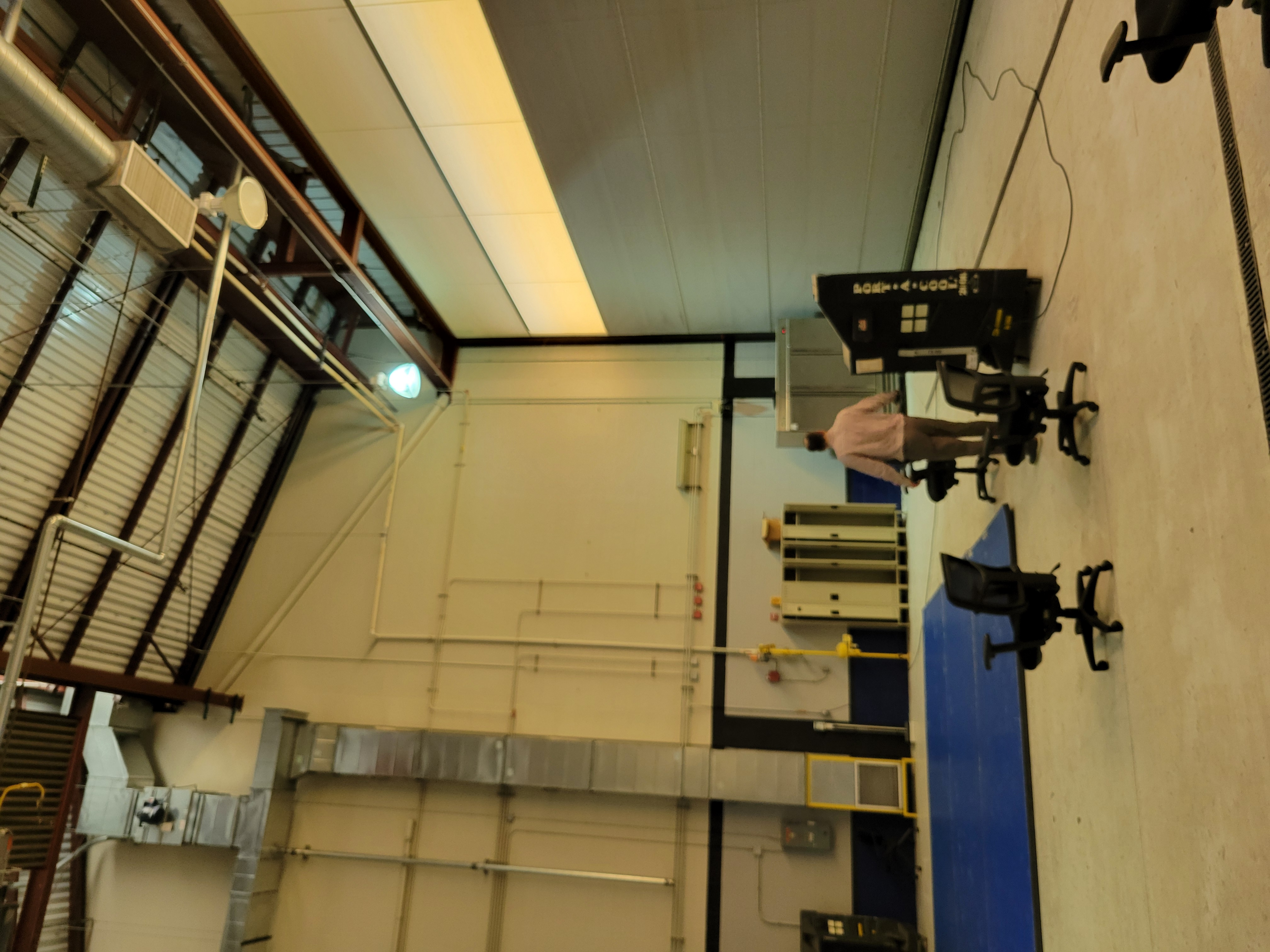






90 DEGREE TEMPERED WATER





ROCK-A-COOL
2014

Person in light-colored shirt

Server rack

Office chair

Office chair

Office chair







A man in a blue plaid shirt and khaki pants is standing and looking at a control panel on a large white machine.

The machine is a large white cabinet with a control console on top. The control console has several buttons and a small display. The machine is situated in a room with a light-colored concrete floor and a white wall.

The machine has a glass-enclosed section in the middle, which appears to be a chamber or a container. The glass is clear, and the interior is lit. The machine is connected to various pipes and wires.

In the foreground, there is a yellow metal stand with a silver cylindrical object on top. The stand is made of metal and has a yellow frame. The cylindrical object is silver and has a vented top.







M. Soto

Box of tissues and a small box on the conference table.

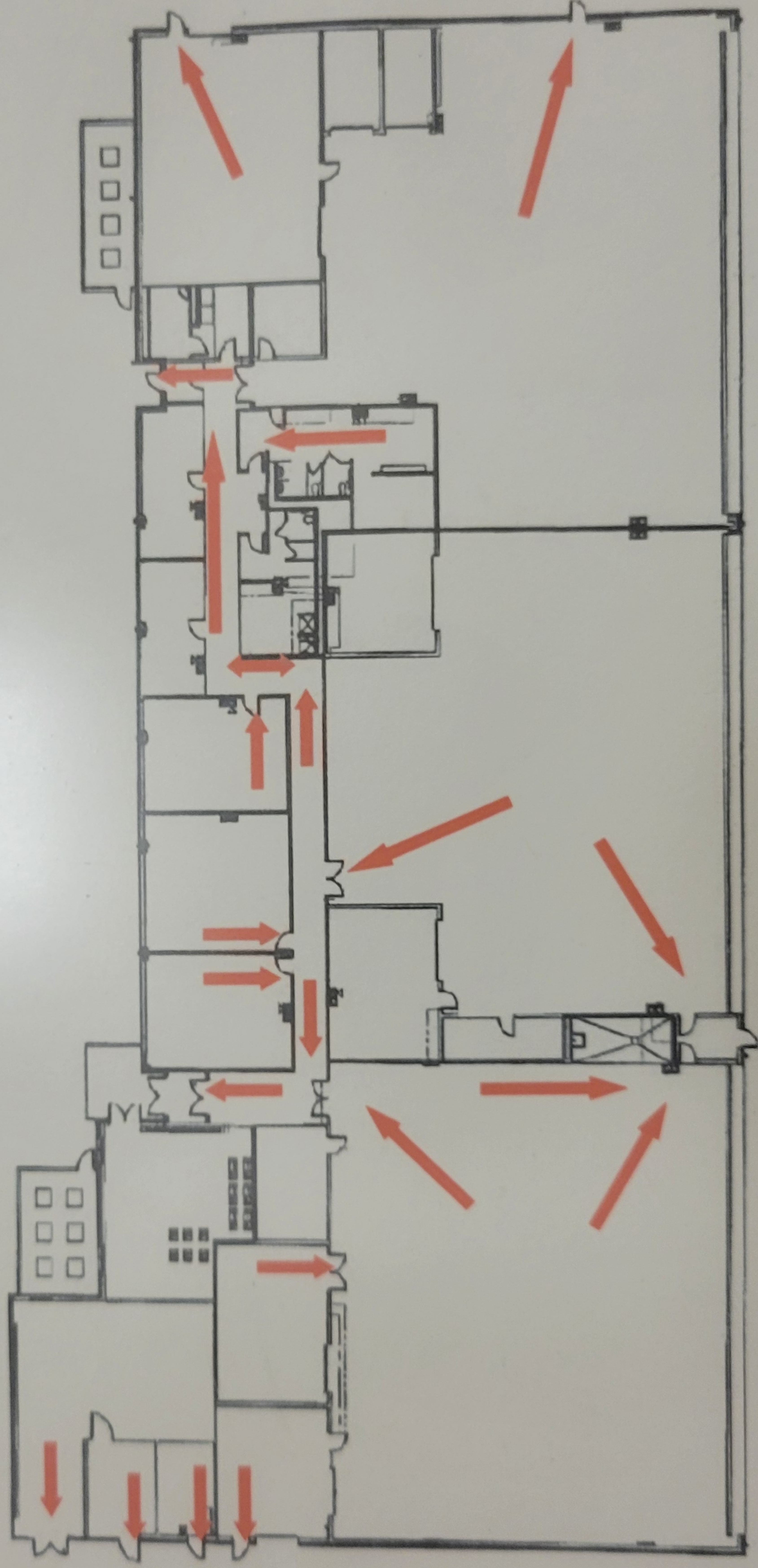
Corkboard with papers on the wall.



EVACUATION MAP

Building Evacuation Procedures:

1. Exit the building through the nearest door, IAW fire evacuation procedures.
2. Assemble at pad outside the big hanger door for head count.













DOMESTIC COLD WATER →
DOMESTIC COLD WATER →

DOMESTIC HOT WATER →
DOMESTIC HOT WATER →

SafeStep POWER
2 3 4 5
6 7 8 9 10

DOG
MADE IN THE U.S.A.



PRIVACY
ACT
INFORMATION

DO NOT WRITE ON THIS END

BY LAW
EXEMPTED









STAND CLEAR! (part of a safety sign)

ROGUE

PRO MAXIMA

PRO MAXIMA

16



A pint of sweat will save a gallon of blood -George Patton

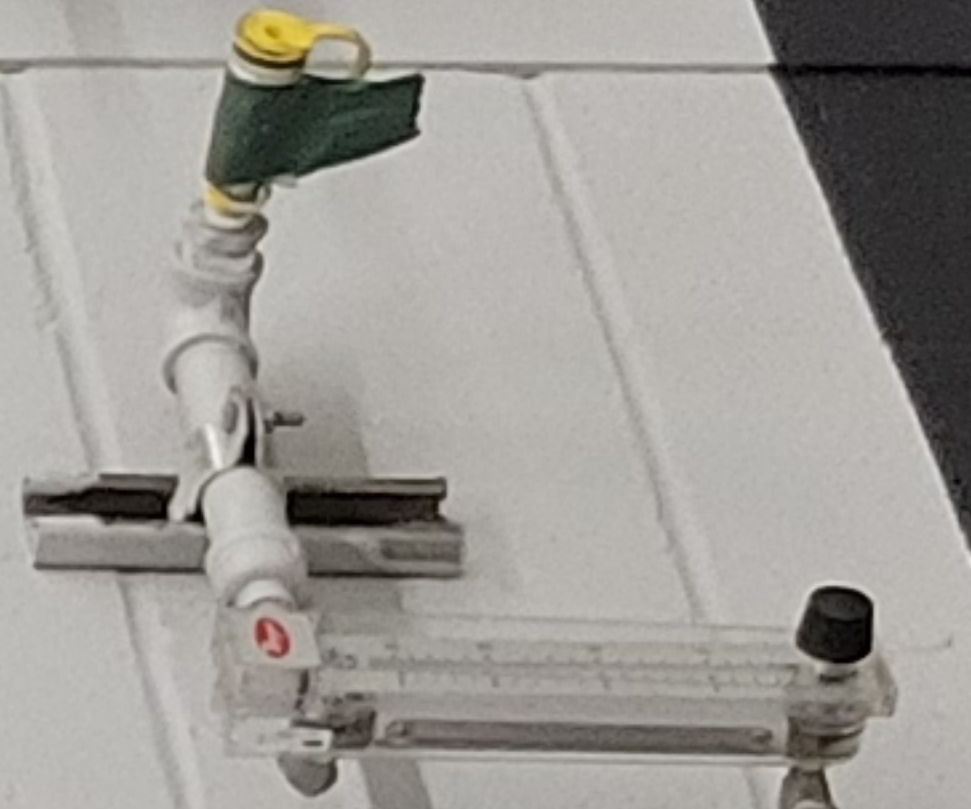
EXIT



BREATHING AIR

88

88



BREATHING AIR

BREATHING AIR



CHESTER HOIST

A pint of sweat will save a gallon of blood -George Patton

EXIT



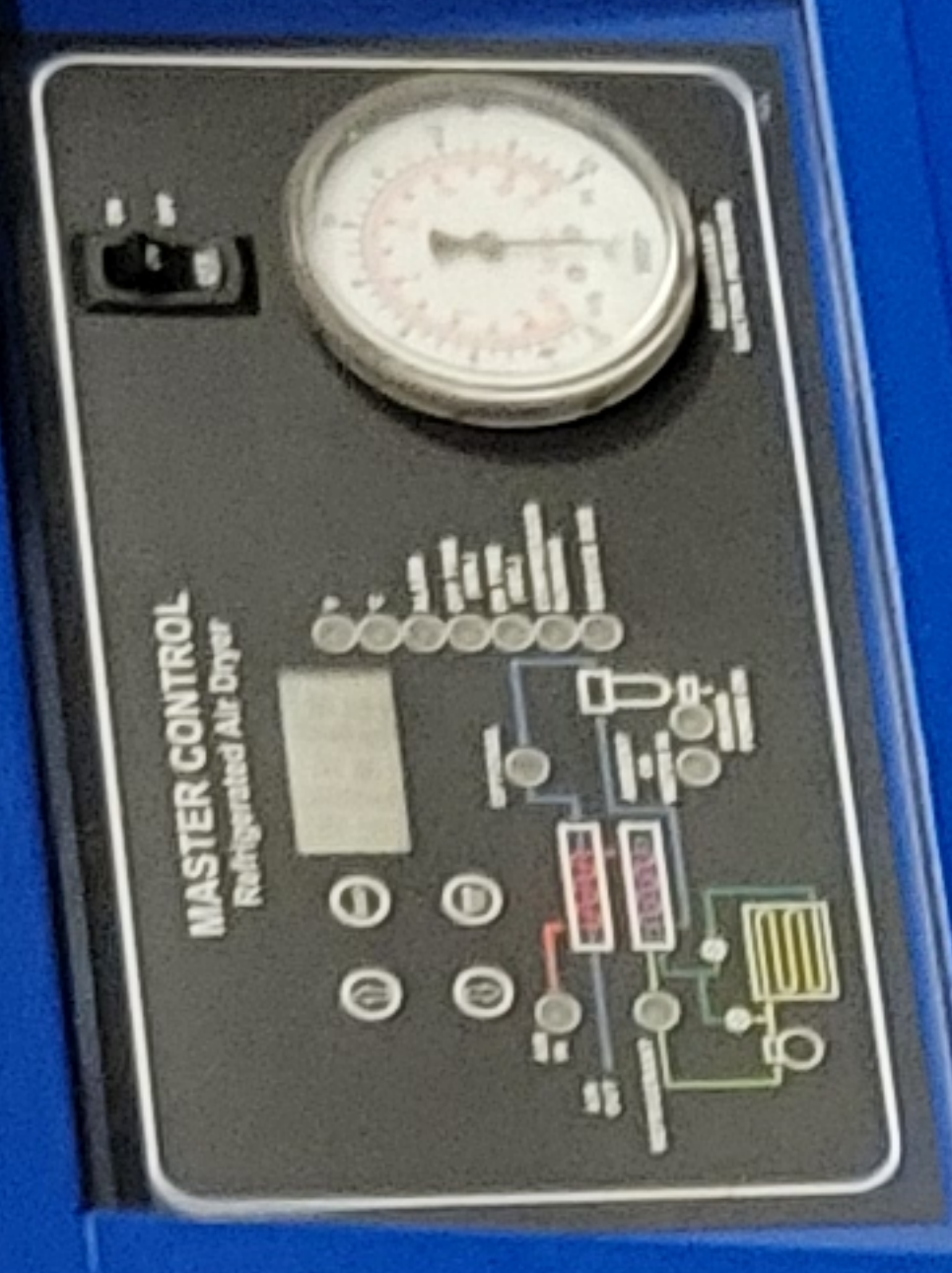






COMPRESSED AIR

MASTER CONTROL
Management Air Corp.



FOR SALES OF SERVICE



475-704-1111
475-704-1111
PO Box 1000
Lynchburg, VA 24502

Quincy
11.75 HP 4.5 TONS
NON-CYCING REFRIGERATED AIR DRYER
MODEL QDR-45

DATE OF MANUFACTURE	08/2014
DATE OF INSTALLATION	08/2014
INSTALLER	MANAGEMENT AIR CORP.
INSTALLATION ADDRESS	1000 W. MAIN ST. LYNCHBURG, VA 24502
INSTALLATION PHONE	475-704-1111
INSTALLATION FAX	475-704-1111
INSTALLATION EMAIL	MANAGEMENTAIR@GMAIL.COM

SERIAL NUMBER
J025221

THIS UNIT IS A REFRIGERATED AIR DRYER
IT IS NOT A COMPRESSOR UNIT
IT IS NOT A PRESSURE VESSEL

Quincy
COMPRESSOR

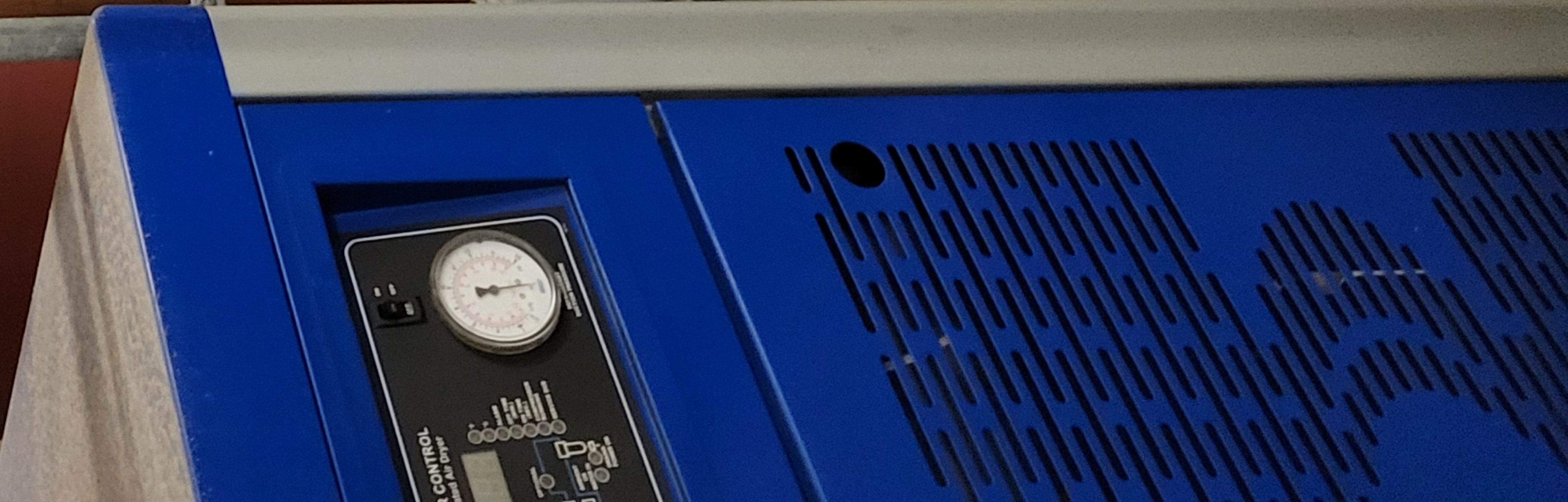


COMRESSED AIR

THE QUALITY OF SERVICE
RATED

Quincy

COMRESSED AIR





Quincy

FIRE LINE

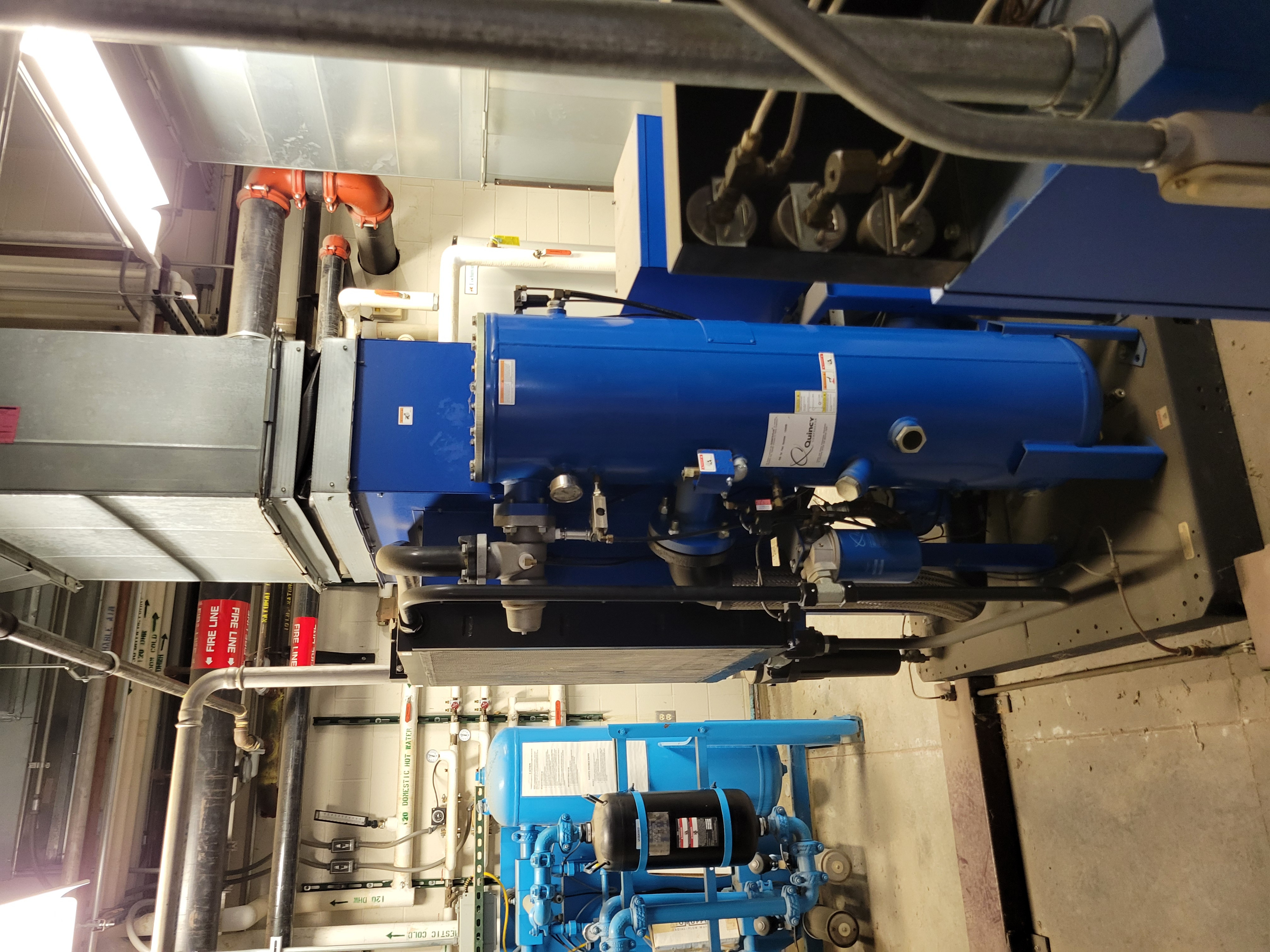
DOMESTIC HOT WATER

DOMESTIC COLD

DOMESTIC RETURN

ATMOSPHERIC AIR

CAUTION



Quincy
Industrial Compressor

DOMESTIC HOT WATER

DOMESTIC COLD

FIRE LINE

FIRE LINE

DOUBLE AIR

120 DHW
120 COLD
120 CHW

PANEL LA1

120/208 VOLTS

⚠ WARNING
ARC FLASH & SHOCK HAZARD
Appropriate personal protection
equipment required



• LA2 •

120/208 VOLTS

⚠ WARNING
ARC FLASH & SHOCK HAZARD
Appropriate personal protection
equipment required



SQUARE D COMPANY

240V Service
1-888-778-2723

WARNING - HIGH VOLTAGE
DANGER OF ELECTRIC SHOCK
OR BURNING
DO NOT OPEN THIS PANEL
UNLESS YOU ARE A QUALIFIED
ELECTRICIAN
SEE THE WARNING LABELS
FOR ADDITIONAL INFORMATION
AND PRECAUTIONS

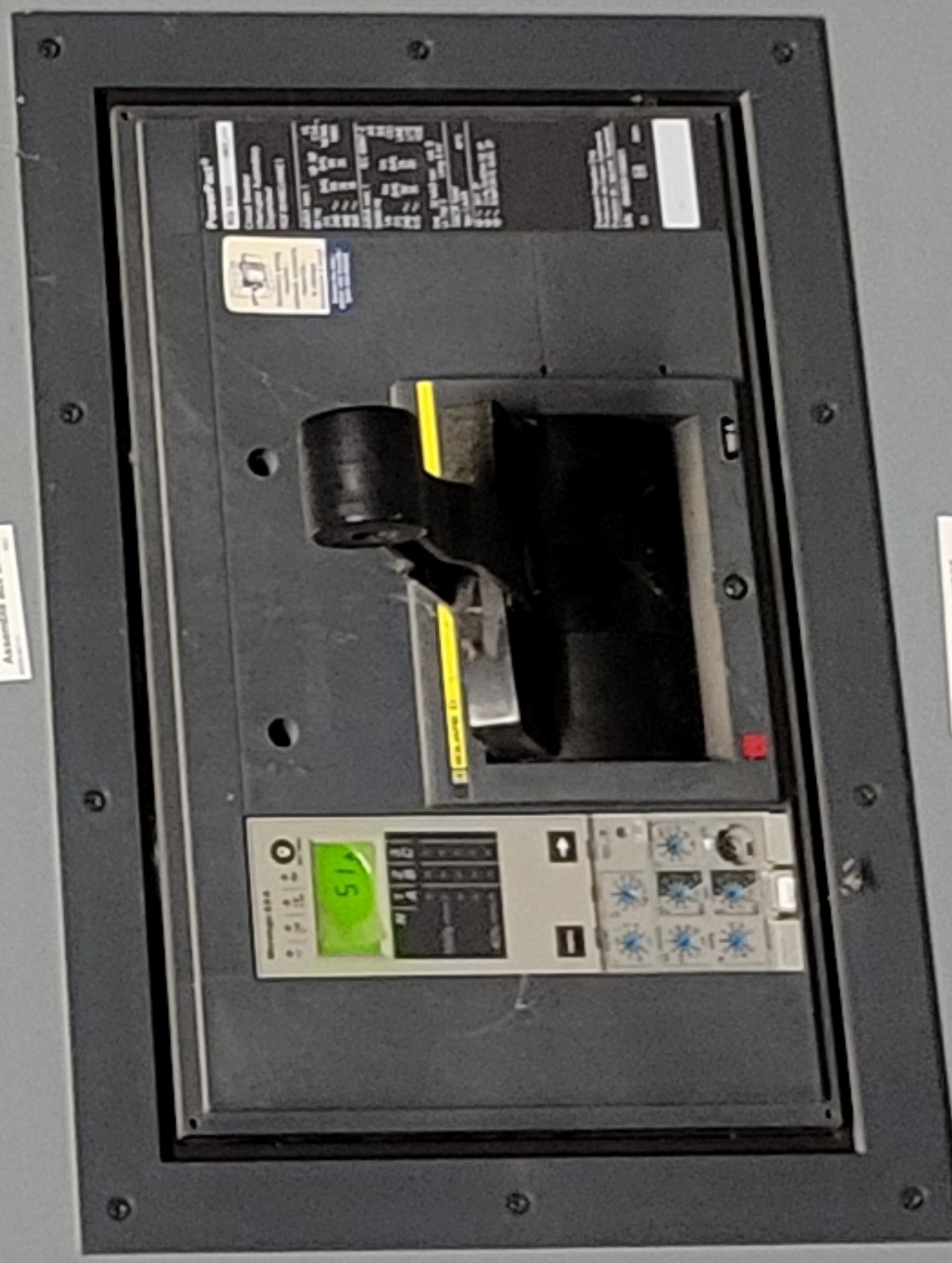
HALEY-ELMSON
ELECTRIC COMPANY, INC.
(479) 646-0433
"QUALITY ELECTRICAL INSTALLATIONS"
WWW.HALEY-ELMSONELECTRIC.COM

480 VOLTS

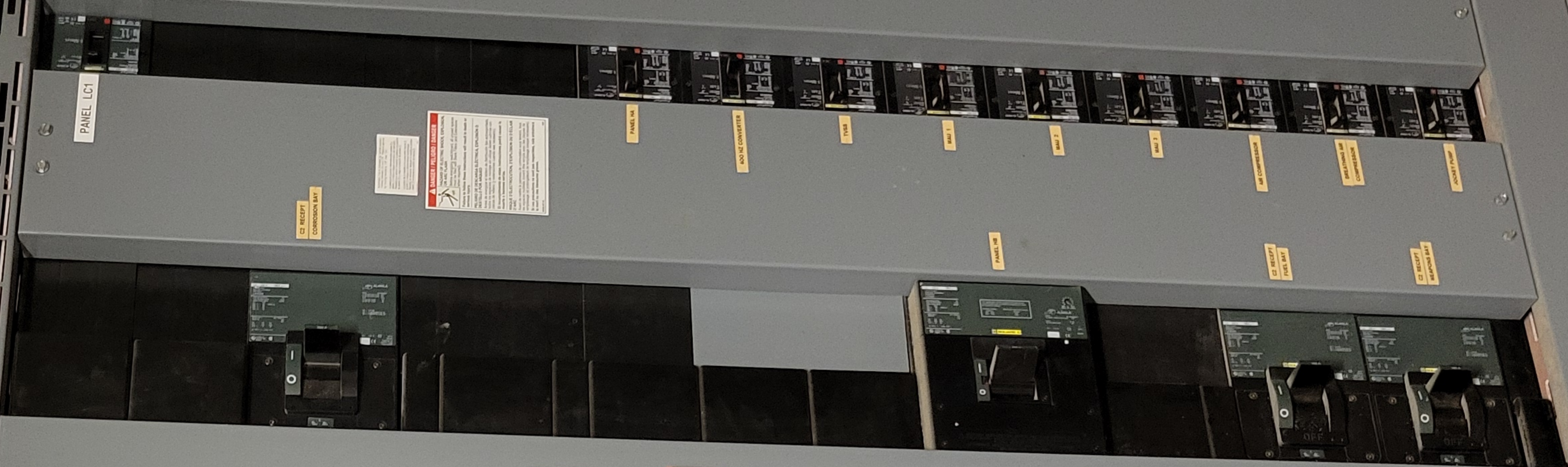


WARNING - HIGH VOLTAGE
DANGER OF ELECTRIC SHOCK
OR BURNING
DO NOT OPEN THIS PANEL
UNLESS YOU ARE A QUALIFIED
ELECTRICIAN
SEE THE WARNING LABELS
FOR ADDITIONAL INFORMATION
AND PRECAUTIONS

240V Service
1-888-778-2723



WARNING - HIGH VOLTAGE
DANGER OF ELECTRIC SHOCK
OR BURNING
DO NOT OPEN THIS PANEL
UNLESS YOU ARE A QUALIFIED
ELECTRICIAN
SEE THE WARNING LABELS
FOR ADDITIONAL INFORMATION
AND PRECAUTIONS



PANEL LC1

WARNING - HIGH VOLTAGE
DANGER OF ELECTRIC SHOCK
OR BURNING
DO NOT OPEN THIS PANEL
UNLESS YOU ARE A QUALIFIED
ELECTRICIAN
SEE THE WARNING LABELS
FOR ADDITIONAL INFORMATION
AND PRECAUTIONS

WARNING - HIGH VOLTAGE
DANGER OF ELECTRIC SHOCK
OR BURNING
DO NOT OPEN THIS PANEL
UNLESS YOU ARE A QUALIFIED
ELECTRICIAN
SEE THE WARNING LABELS
FOR ADDITIONAL INFORMATION
AND PRECAUTIONS

WARNING - HIGH VOLTAGE
DANGER OF ELECTRIC SHOCK
OR BURNING
DO NOT OPEN THIS PANEL
UNLESS YOU ARE A QUALIFIED
ELECTRICIAN
SEE THE WARNING LABELS
FOR ADDITIONAL INFORMATION
AND PRECAUTIONS



120/208 VOLTS

LB2
120/208 VOLTS
WARNING
ELECTRIC SHOCK HAZARD
DO NOT OPEN DOOR
UNLESS YOU ARE A QUALIFIED
ELECTRICIAN

PANEL LBI
120/208 VOLTS
WARNING
ELECTRIC SHOCK HAZARD
DO NOT OPEN DOOR
UNLESS YOU ARE A QUALIFIED
ELECTRICIAN

120/208 VOLTS
JARE D

WARNING
 IF THE UNIT HAS BEEN REPAIRED OR SERVICED, IT HAS BEEN RECHECKED FOR DEFECTS. HOWEVER, THE INSTALLATION, REPAIR, OR MAINTENANCE OF THIS UNIT SHOULD BE PERFORMED BY A QUALIFIED SERVICE PERSONNEL. IF YOU EXPERIENCE ANY PROBLEMS WITH THE UNIT, CONTACT YOUR SERVICE PERSONNEL IMMEDIATELY.

NOTICE
 IF THE UNIT HAS BEEN REPAIRED OR SERVICED, IT HAS BEEN RECHECKED FOR DEFECTS. HOWEVER, THE INSTALLATION, REPAIR, OR MAINTENANCE OF THIS UNIT SHOULD BE PERFORMED BY A QUALIFIED SERVICE PERSONNEL. IF YOU EXPERIENCE ANY PROBLEMS WITH THE UNIT, CONTACT YOUR SERVICE PERSONNEL IMMEDIATELY.

CAUTION
 TO AVOID INJURY FROM MOVING PARTS, DISCONNECT POWER TO THE EQUIPMENT BEFORE REMOVING OR OPENING THE COVER, DOOR.

ATTENTION
 POUR ÉVITER TOUTE BLESSURE ATTRIBUABLE AUX PIÈCES EN MOUVEMENT, COUPER L'ALIMENTATION ÉLECTRIQUE À CET ÉQUIPEMENT AVANT DE RETIRER, D'OUVRIR (DE COUVERCLE, CETTE PORTE).



DANGER!

TO AVOID INJURY FROM MOVING PARTS, DISCONNECT POWER TO THE EQUIPMENT BEFORE (REMOVING, OPENING) THIS (COVER, DOOR).

POUR ÉVITER TOUTE BLESSURE ATTRIBUABLE AUX PIÈCES EN MOUVEMENT, COUPER L'ALIMENTATION ÉLECTRIQUE À CET ÉQUIPEMENT AVANT DE RETIRER, D'OUVRIR (DE COUVERCLE, CETTE PORTE).

TRANE SERIAL: F08H07391 TAG: MAU-2
 DF1A1201FINEACHQ1
 D0ABAGLAPQAAX468G

TRANE
 4830 Transport Drive
 Dallas, Texas 75247

Model Number: DP 125 LHT
 Serial Number: 30003480000201
 Date of Manufacture: 01/12/10
 Date of Installation: 01/12/10
 Equipment Location: 1000
 Equipment Type: 1000
 Equipment Model: 1000
 Equipment Serial: 1000

WARNING
 HAZARDOUS VOLTAGE!
 DISCONNECT POWER BEFORE SERVICING.
 AVERTISSEMENT
 VOL TAGE HASARDEUX!
 DECONNECTEZ LA SOURCE ÉLECTRIQUE AVANT D'EFFECTUER L'ENTRETIEN.

WARNING
 ROTATING PARTS!
 DISCONNECT POWER BEFORE SERVICING.
 AVERTISSEMENT
 PIÈCES TOURNANTES!
 DISCONNECTEZ LA SOURCE ÉLECTRIQUE AVANT D'EFFECTUER L'ENTRETIEN.

UNIT ENABLE

TEMPERATURE SETPOINT

FAN ON

CLOGGED FILTER

BURNER ON

COOL ON

TRANE



HARVEY-PRESTON
ELECTRIC COMPANY, INC.

(479) 646-0433

"QUALITY ELECTRICAL INSTALLATIONS"

WWW.HARVEYPRESTONELECTRIC.COM

480 VOLTS

SETONCODE SC8 (FITS 3/4" THRU 2 3/8") SETON 800-243-6624

HARVEY-PRESTON
ELECTRIC COMPANY, INC.

(479) 646-0433

"QUALITY ELECTRICAL INSTALLATIONS"

WWW.HARVEYPRESTONELECTRIC.COM

480 VOLTS

SETONCODE SC8 (FITS 3/4" THRU 2 3/8") SETON 800-243-6624

~~212~~

~~212~~

202







207-08 TLN 2 MIC 500

SPRINKLER

SPRINKLER

EXHAUST
DANGER
DO NOT
USE ON
FLAMMABLE
LIQUIDS

3/4"

POTTER
PFC-Series
Pressure Control

POTTER
PFC-Series
Pressure Control

POTTER
PFC-Series
Pressure Control

Whisper
POTTER
PFC-Series
Pressure Control

M
POTTER
PFC-Series
Pressure Control





WARNING
 BOLTS OR LIFTING
 LUGS PROVIDED ARE
 FOR LIFTING ONLY THE
 COMPONENTS TO WHICH
 THEY ARE ATTACHED.
 FAILURE TO FOLLOW
 INSTRUCTIONS COULD RESULT
 IN INJURY OR DEATH.
 P70943

CC PA
 15 3 2006
 15 3 2006
 15 3 2006



308 Regent
 Summerville SC
 843-513-78

DO NOT REMOVE
 BY ORDER OF
 THE STATE FIRE MARSHAL
 Code 3 Fire Protection
 308 Regent
 Summerville

1	2	3	4
19	17	18	19



Vielanlie
Piralach
KOLLEKTIV

70-119st+

70-119st+

70-119st+









