















WORN	WORN	WORN	WORN
<ul style="list-style-type: none"> <li>OVERGARMENT</li> <li>MASK CARRIER</li> <li>FIELD GEAR</li> <li>FOOTWEAR COVERS</li> </ul>	<ul style="list-style-type: none"> <li>OVERGARMENT</li> <li>MASK/hood</li> <li>FIELD GEAR</li> <li>FOOTWEAR COVERS</li> </ul>	<ul style="list-style-type: none"> <li>OVERGARMENT</li> <li>MASK/hood</li> <li>FIELD GEAR</li> <li>FOOTWEAR COVERS</li> </ul>	<ul style="list-style-type: none"> <li>MASK/hood</li> <li>FIELD GEAR</li> <li>GLOVES</li> </ul>
<b>CARRIED</b> FOOTWEAR COVERS MASK/hood GLOVES	<b>CARRIED</b> GLOVES	<b>CARRIED</b> GLOVES	<b>CARRIED</b> OVERGARMENT FOOTWEAR COVERS
<b>PRIMARY USE</b> CB THREAT PRE-ATTACK	<b>PRIMARY USE</b> CB THREAT PRE-ATTACK	<b>PRIMARY USE</b> CB THREAT TRANS/POST ATTACK	<b>LIKELY USE</b> CB THREAT TRANS/POST ATTACK
<ul style="list-style-type: none"> <li>CHEMICAL BIOLOGICAL ATTACK IN THEATER IS PROBABLE</li> </ul>	<ul style="list-style-type: none"> <li>IN AREAS WITH NEGLIGIBLE CONTACT HAZARD</li> </ul>	<ul style="list-style-type: none"> <li>WHEN THE HIGHEST DEGREE OF CB PROTECTION IS REQUIRED</li> <li>WHEN PERSISTENT CHEMICAL AGENTS ARE PRESENT</li> <li>WHEN CB AGENTS ARE PRESENT; THE ACTUAL HAZARD HAS NOT BEEN DETERMINED</li> </ul>	<ul style="list-style-type: none"> <li>UPWIND FROM A NEGLIGIBLE CHEMICAL VAPOR HAZARD AGENT</li> <li>BIOLOGICAL WARFARE AGENTS ARE BEING EMPLOYED</li> <li>INSIDE VEHICLES, BUILDINGS OR AIRCRAFT</li> <li>UNDER NUCLEAR FALLOUT CONDITIONS</li> </ul>

**PLEASE POST ON**

Depleted Uranium (DU) is a dense penetrating munitions. Exposure to material containing Depleted Uranium in inhalation, or by it entering the body tissues absorb the energy emitted from hazard to personnel; however, follow:

- STAY AWAY from expended it.
- MINIMIZE the time near the it.
- MAXIMIZE the distance between it.
- Improve personal shielding by exposed skin.

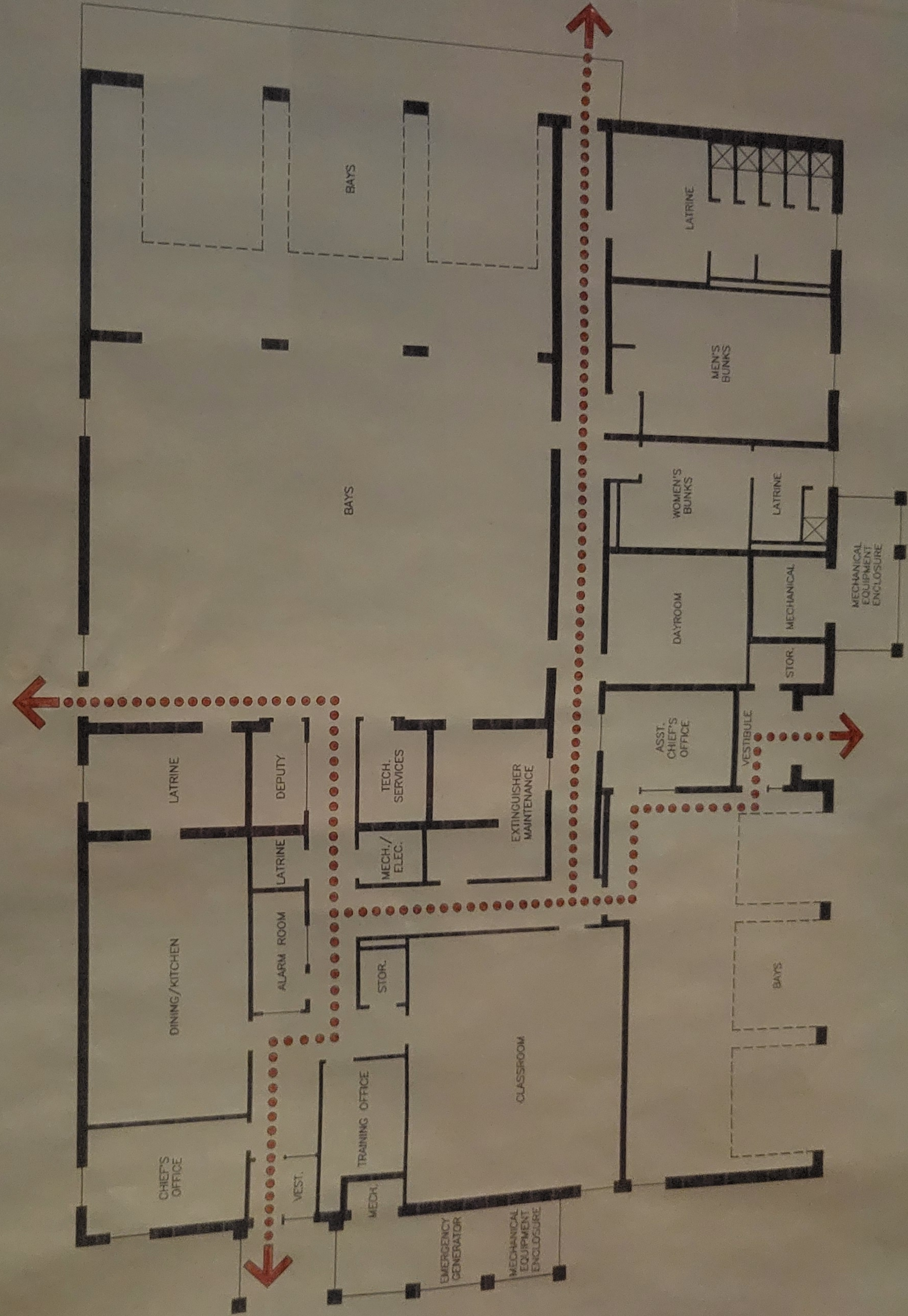
ation - Open Overgarment: In some cases, personnel may, with little risk, open the overgarment jacket to aid ventilation and reduce thermal build-up. This ventilation is automatically and with each MOPP level increase, unless specifically reauthorized by the commander.

DUU: Individuals, when directed, wear the overgarment over underwear when heat stress is expected to be a significant factor

**Mask-Only:** The mask, hood, and long sleeve duty uniform (for limited joint protection) may be worn.

3. If "All Clear, MOPP 0" is announced, web belt and canteen may be worn if desired.

4. Only the installation commander directs the MOPP levels and variations listed above. Modifications to MOPP's and variations must be approved by MAJCOM or Theater commander.

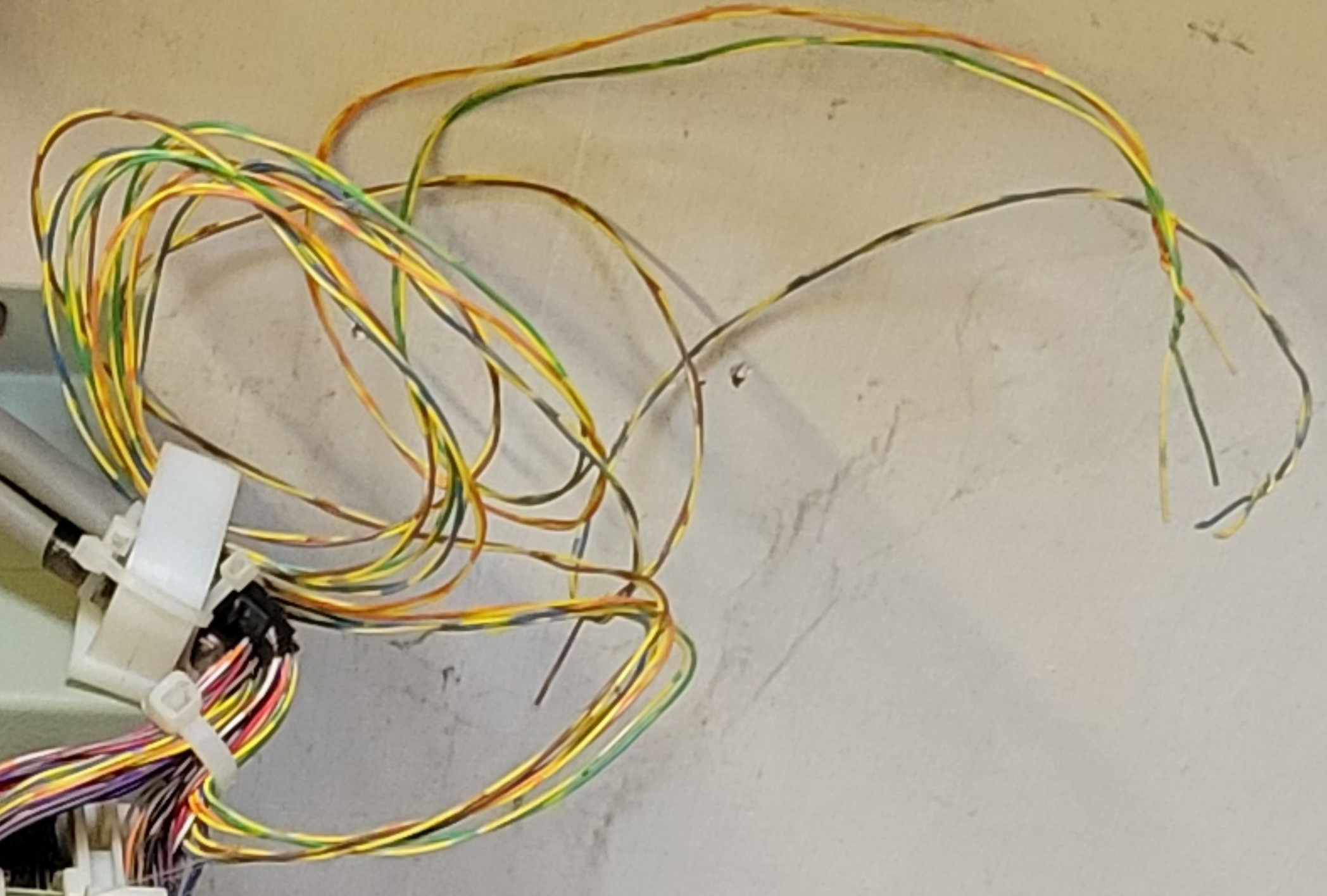
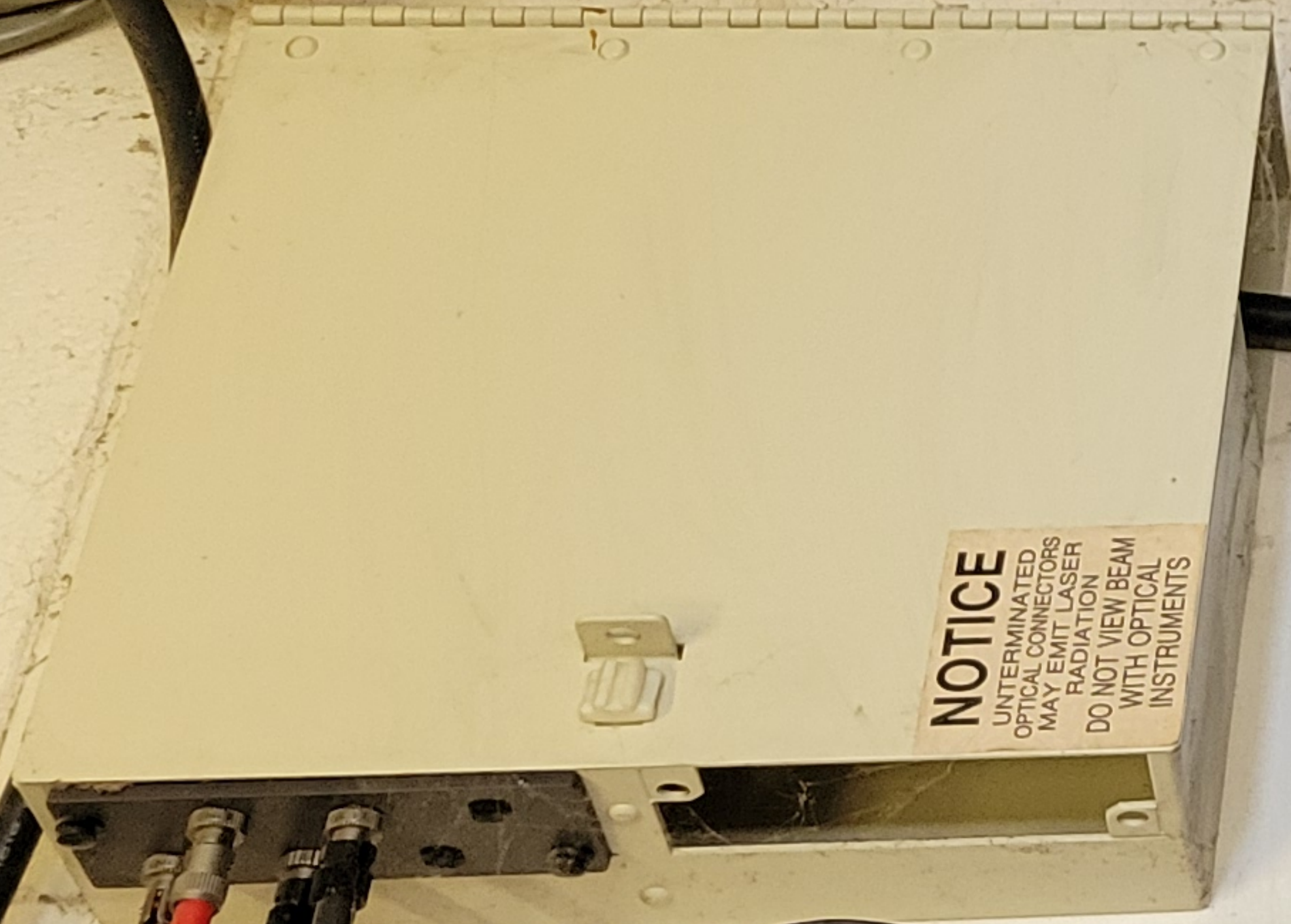
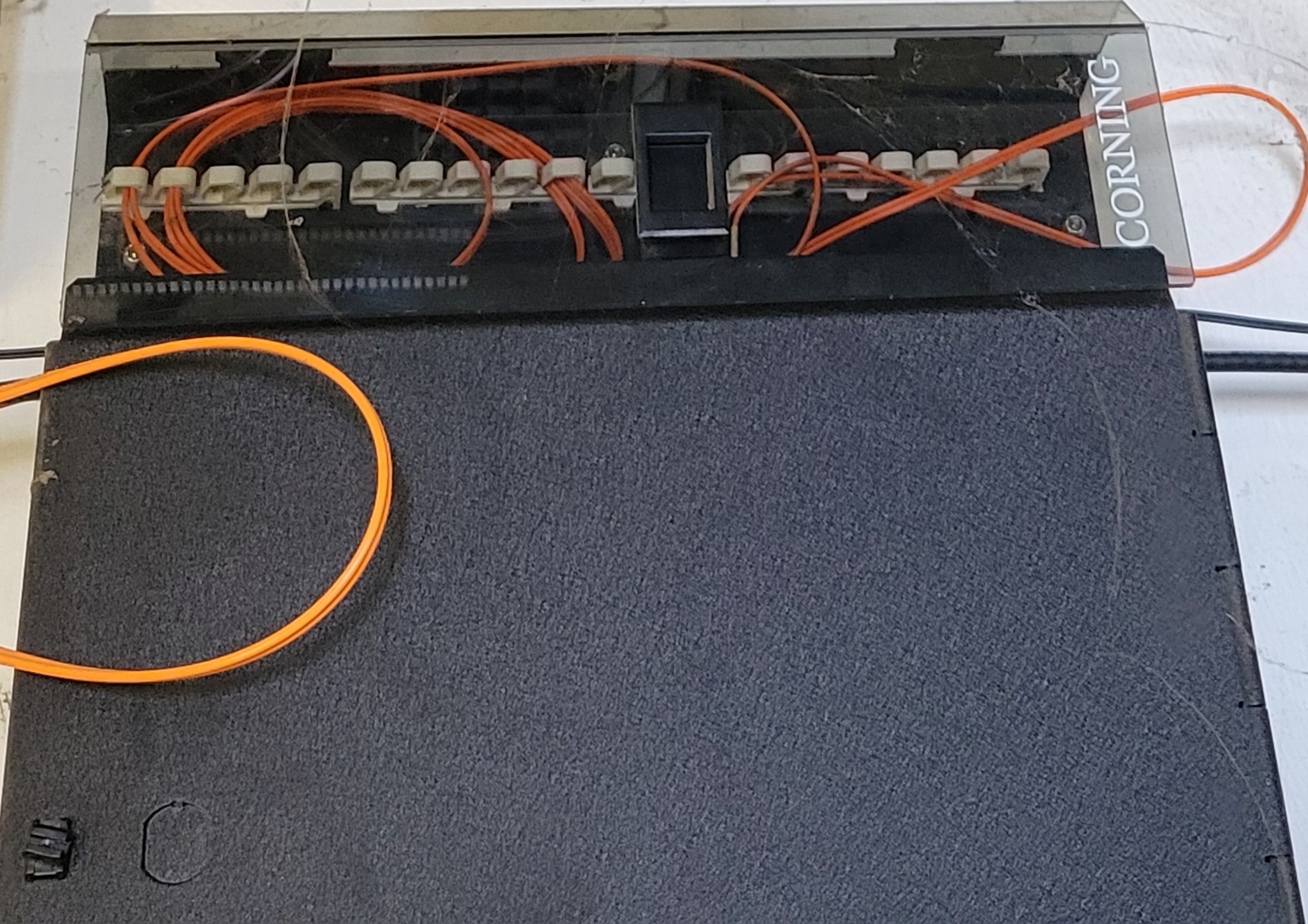
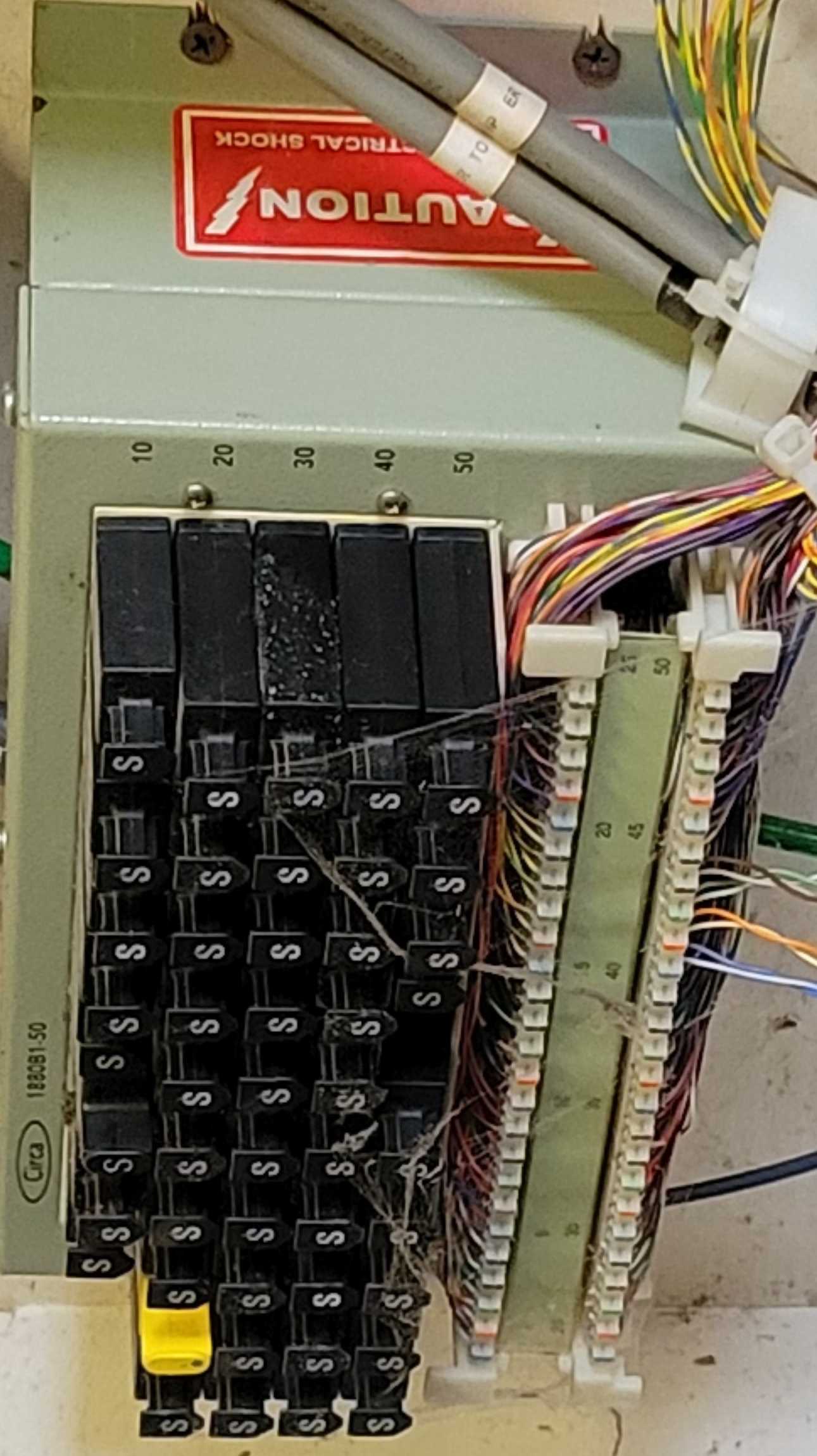
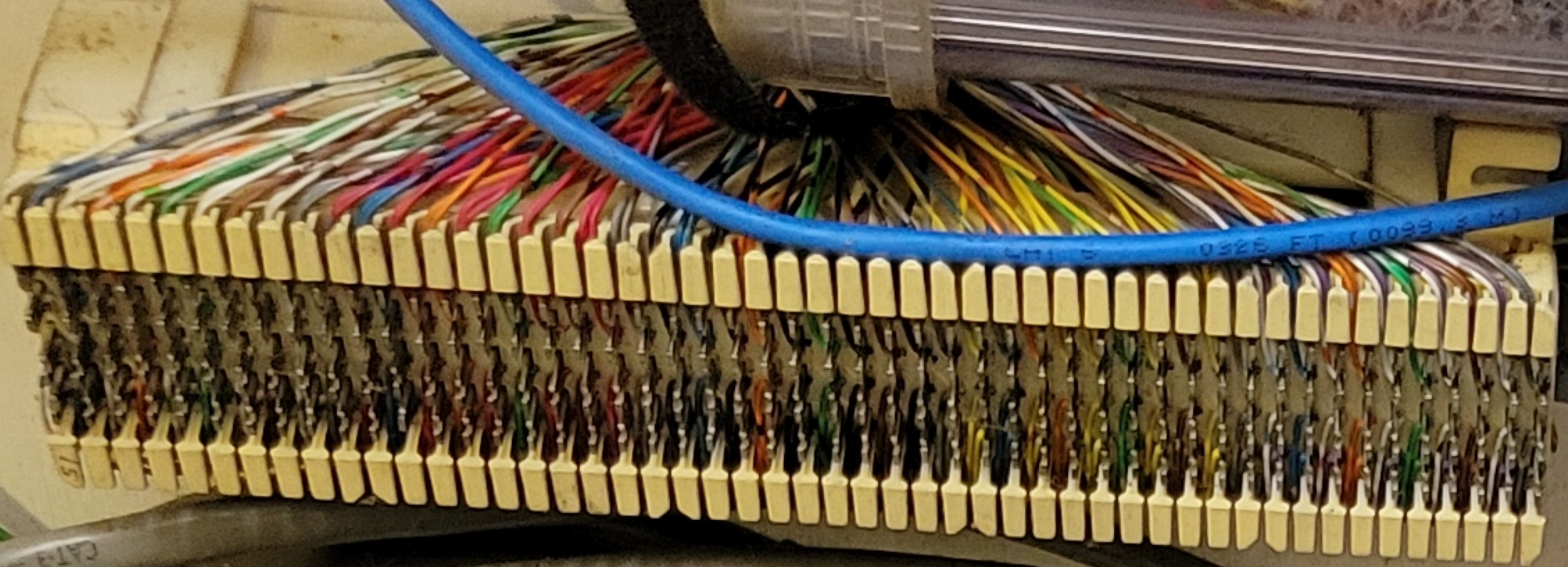
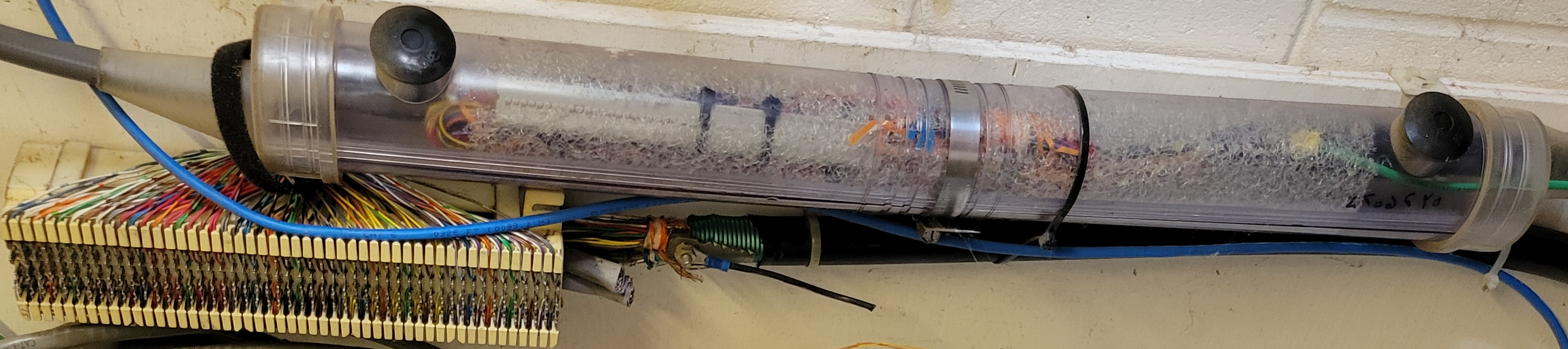
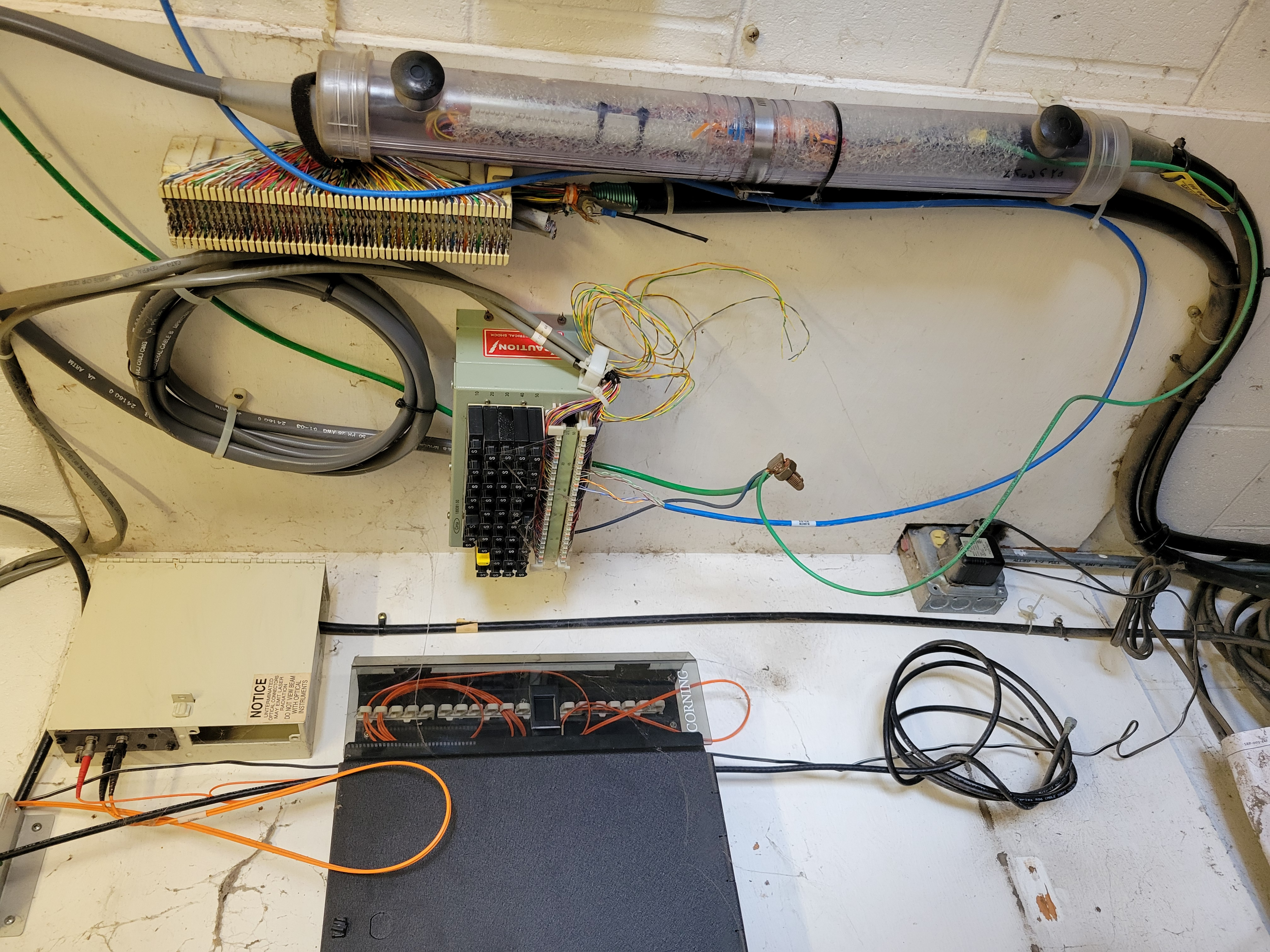


# FIRE EVACUATION PLAN

BLDG. 201 - FIRE STATION - ARKANSAS AIR NATIONAL GUARD

1/8 - 1-07



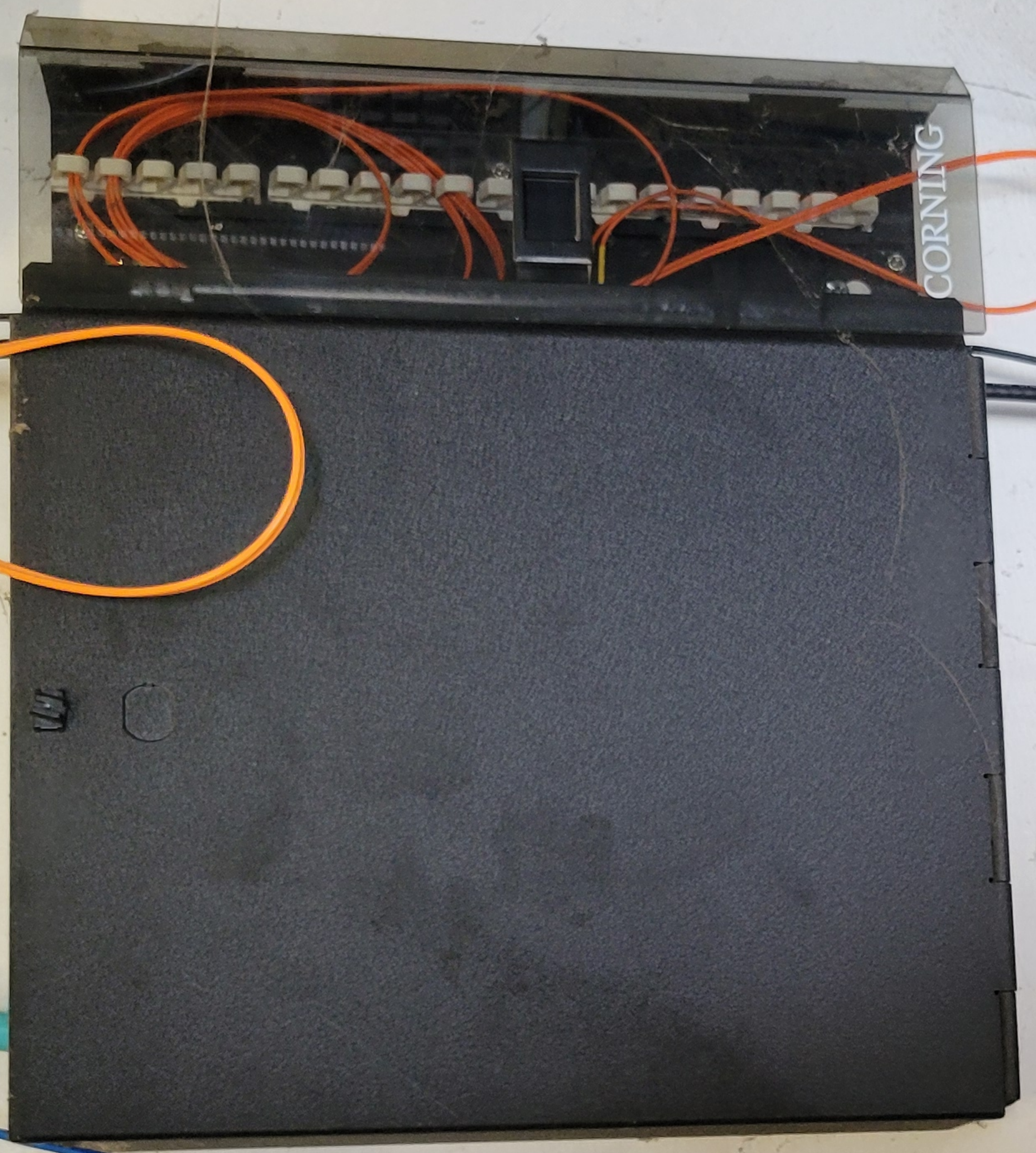
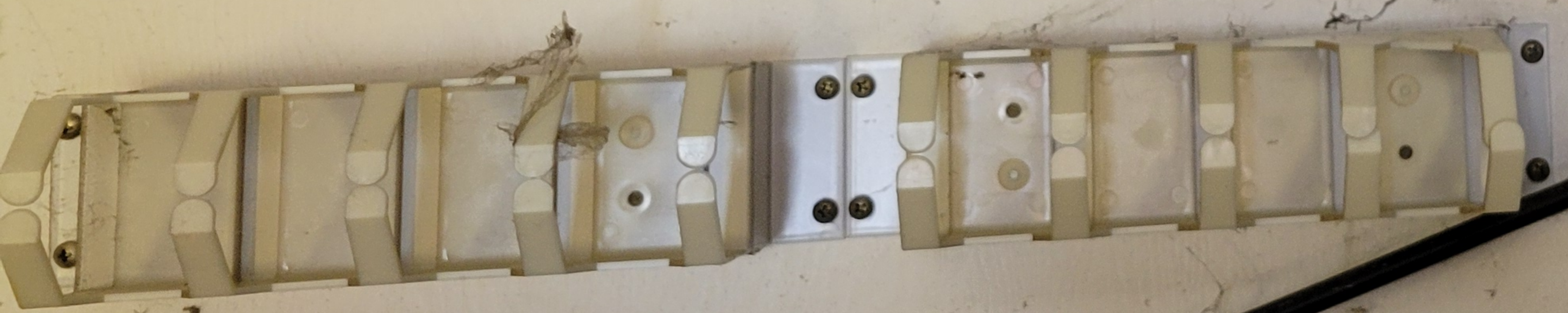




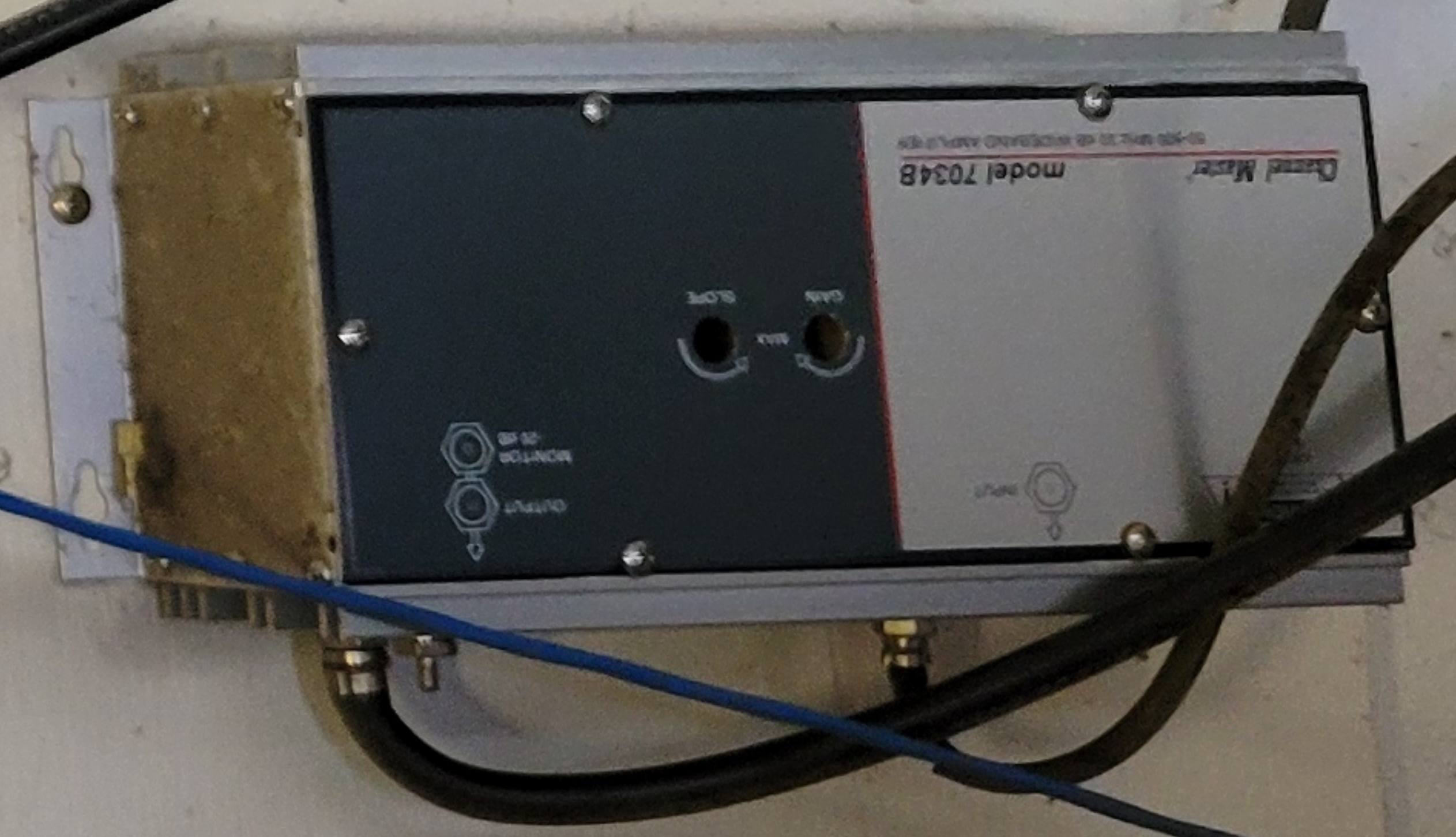
**NOTICE**  
UNTERMINATED  
OPTICAL FIBERS  
MAY EMIT LASER  
RADIATION  
DO NOT VIEW BEAM  
WITH OPTICAL  
INSTRUMENTS

A white rectangular box with a warning label. The label reads: "NOTICE UNTERMINATED OPTICAL FIBERS MAY EMIT LASER RADIATION DO NOT VIEW BEAM WITH OPTICAL INSTRUMENTS". The box has several fiber optic connectors on its side, including a red one and a black one.

CORNING

A black rectangular fiber optic patch panel with the "CORNING" logo on the right side. It features a row of fiber optic ports at the top, with several orange fibers plugged in. A single orange fiber is also connected to the top of the panel.A white fiber optic patch panel with multiple ports. It has a series of fiber optic connectors along its length, some of which are covered with white tape. The panel is mounted on a metal base.

Corning Model 7034B

A Corning Model 7034B fiber optic patch panel. It is a white rectangular device with a black top section. The top section has two knobs labeled "LAMB" and "SLASH". Below the knobs are two circular ports labeled "INPUT" and "OUTPUT". The text "Corning Model 7034B" is printed on the top right.A bundle of black cables, some of which are coiled. The cables are connected to various components in the system.A piece of paper with technical drawings or diagrams, partially obscured by other equipment. It appears to be a schematic or a layout plan for the fiber optic system.





Feed  
2









**KV2C**

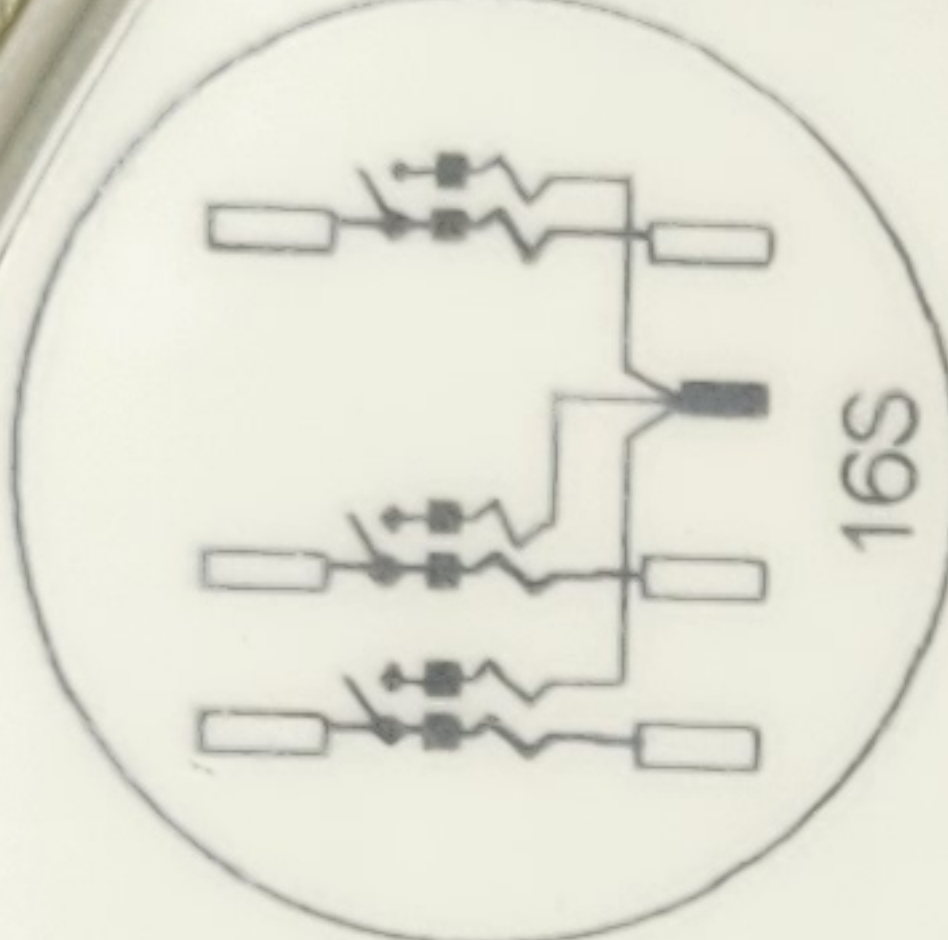
Multifunction Meter FITZALL™

Silver Spring Networks

0013500101549B38



Contains:  
MODEL No. NIC2146  
FCC ID: DVS-NICS57  
IC: 5875A-NICS57



OG&E 1060137  
52750758G

0604  
USA  
1111

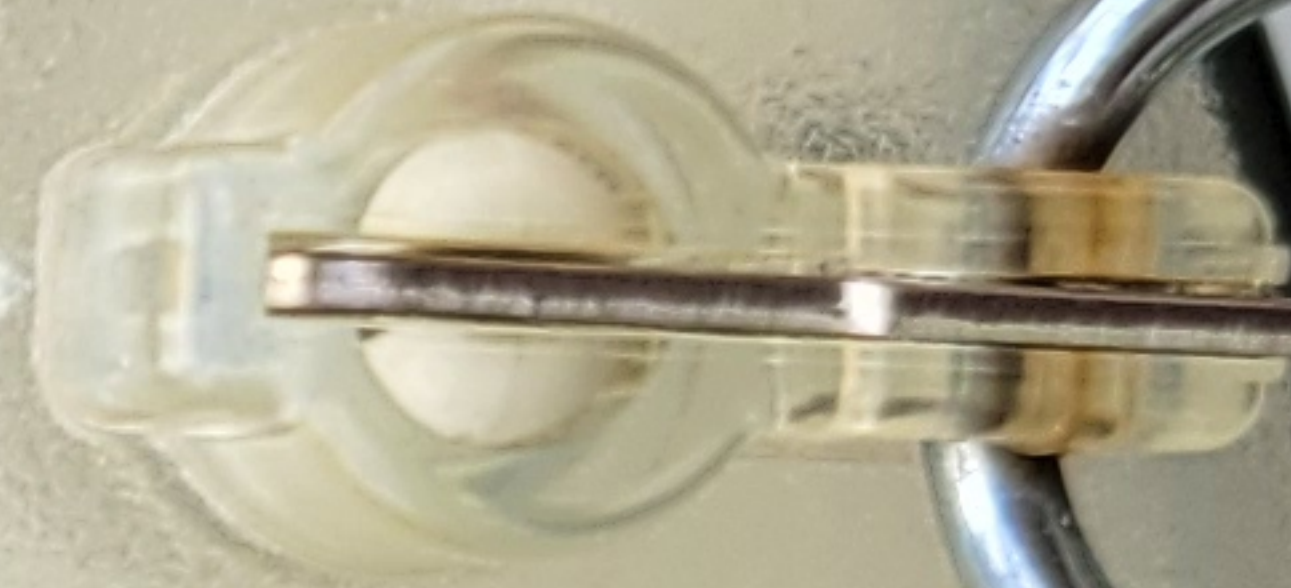
B	L
○	○
C	M
○	○
E	Q
●	○
I	R
○	○
K	T
○	○
	V
	○
	W
	○
	X
	○
	Z
	○

01 182970

Mult by 1

CL 320

120-480V 4W FM16S Kt 27.0  
787X480033 50/60Hz CA 0.2 TA 50 Kh 27.0 TV 120











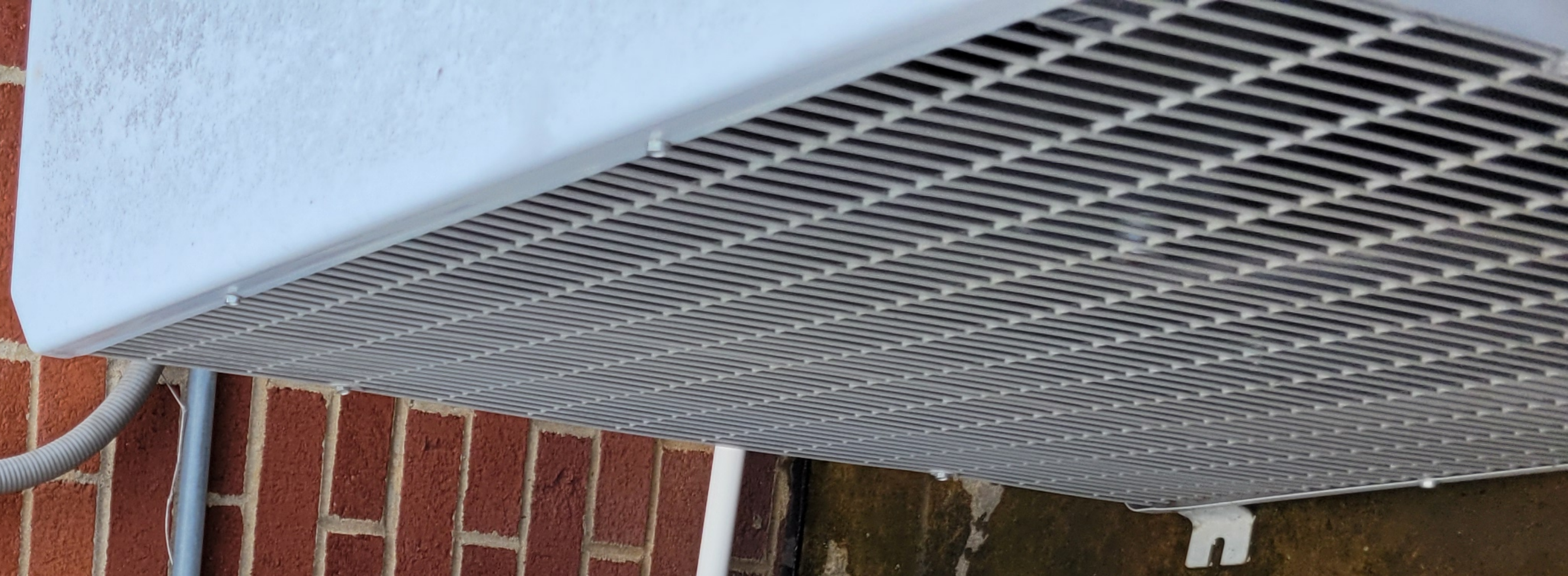








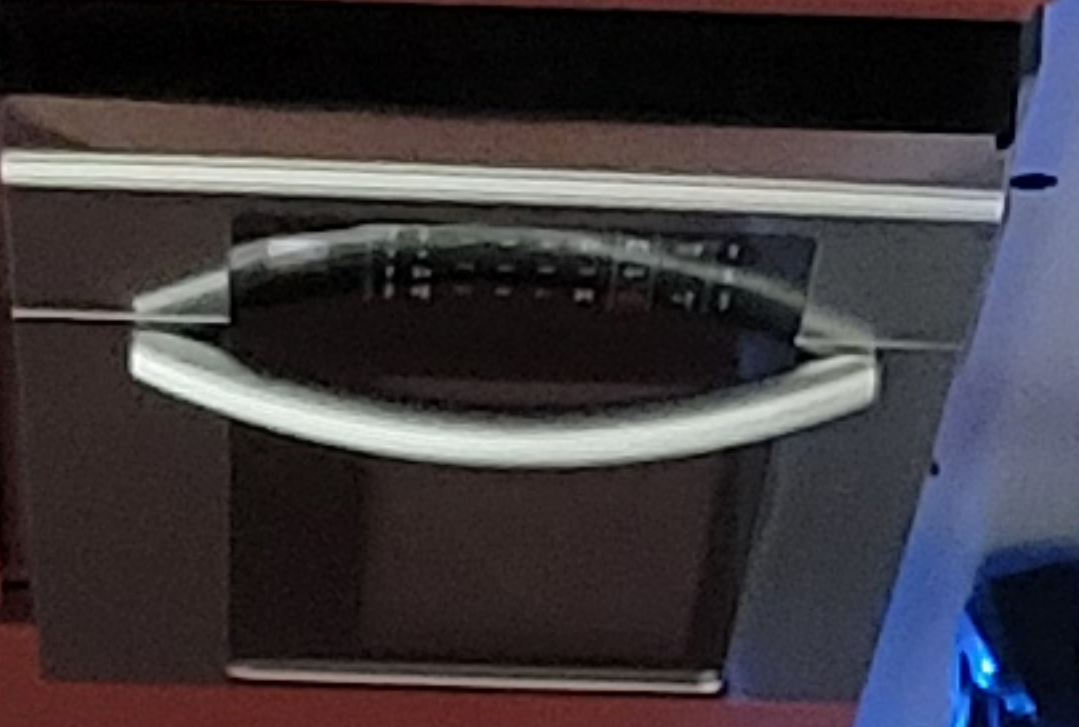
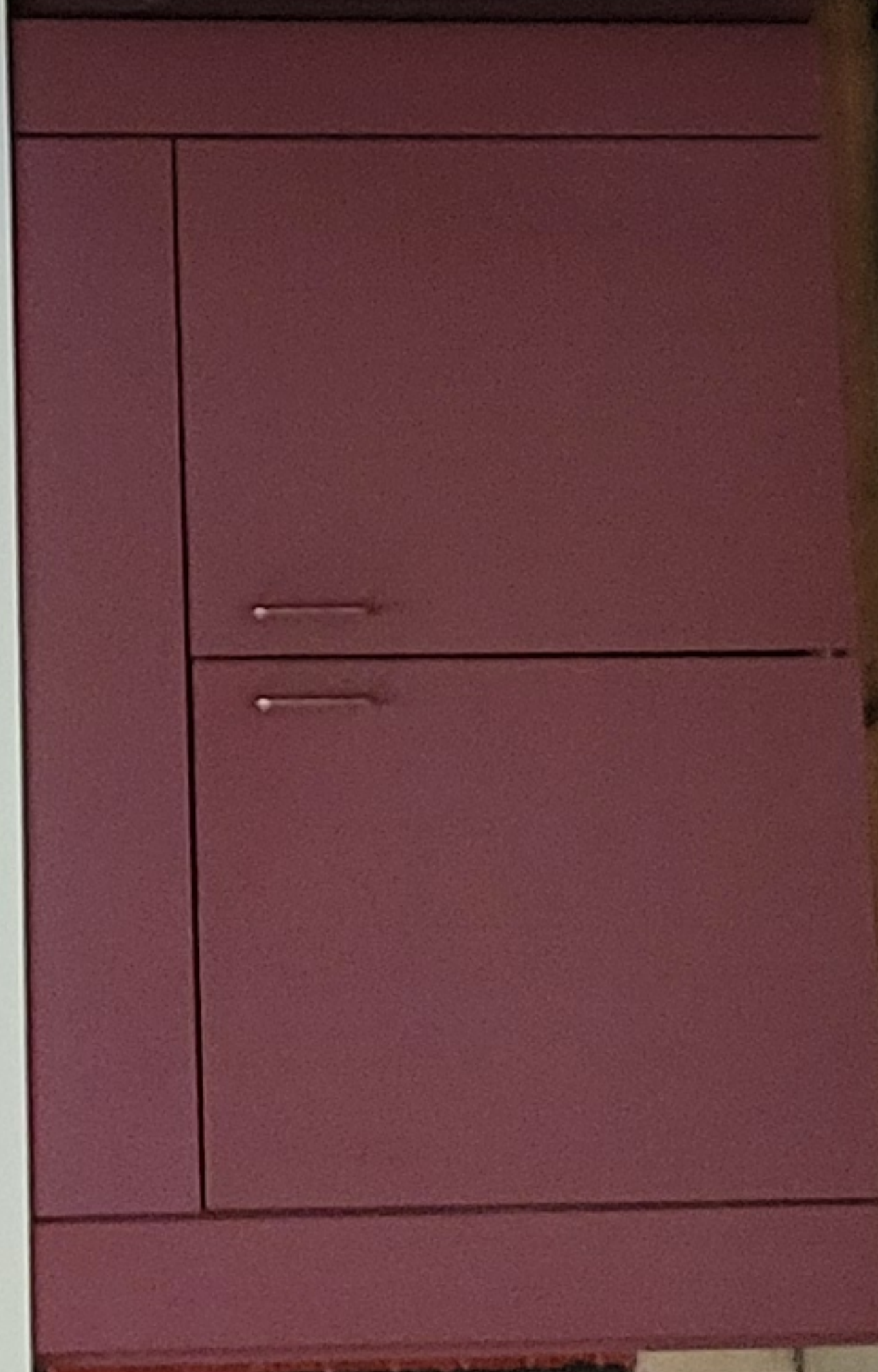








♿







SIEMENS

SIEMENS  
SIMATIC 3ES7 311-1CG03-0AB0

PLC 1120 S04





28



PNL PB



**WARNING**  
ARC FLASH & SHOCK HAZARD  
Appropriate personal protection  
equipment required

**BOMB THREAT AID**  
(Place this card under your telephone)

NAME: WHICH CALL IS RECEIVED \_\_\_\_\_

LENGTH OF CALL \_\_\_\_\_ TIME OF CALL \_\_\_\_\_

DATE OF CALL \_\_\_\_\_ EXACT WORDING OF THE THREAT \_\_\_\_\_

**QUESTIONS TO ASK**

1. When is bomb going to explode?
2. Where is it right now?
3. What does it look like?
4. What kind of bomb is it?
5. What will cause it to explode?
6. Did you place the bomb?
7. Why?
8. Where are you?
9. What is your name?

**FOLLOW PROCEDURES SPECIFIED TO YOUR TELEPHONE SYSTEM  
FOR TRACING CALLS. WHEN REPORT CALL IMMEDIATELY TO  
POLICE AND FIRE DEPARTMENT.**

**BOMB THREAT**

AP FORM 448, NOV 88  
Product Division and Company



~~Handwritten scribble~~

102



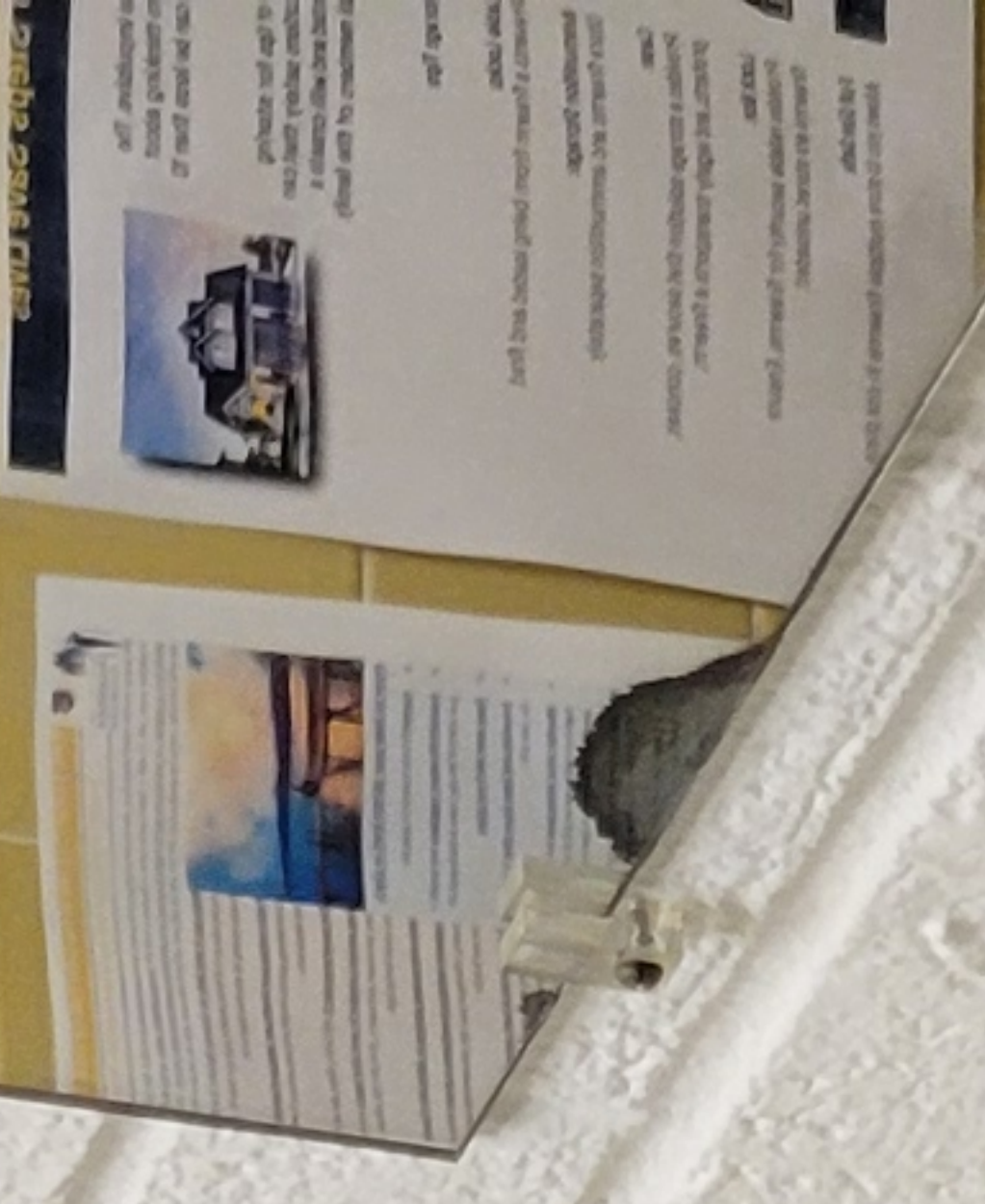
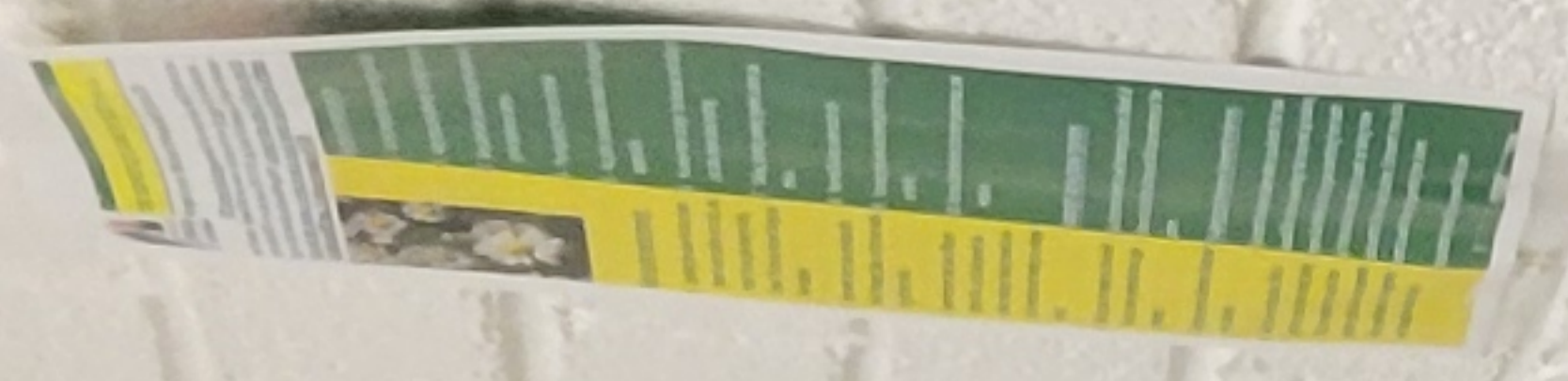


**Safely Dispose of Your Waste**

There are many ways to keep your stall clean and safe. Please follow these instructions to help us keep our restroom clean and safe for everyone.

- Tissues: Please dispose of tissues in the tissue bin.
- Paper: Please dispose of paper in the paper bin.
- Food: Please dispose of food in the food bin.
- Litter: Please dispose of litter in the litter bin.
- Other: Please dispose of other waste in the other bin.

Thank you for helping us keep our restroom clean and safe!























Locker 1 (Top Row)	Locker 2 (Top Row)	Locker 3 (Top Row)	Locker 4 (Top Row)	Locker 5 (Top Row)	Locker 6 (Top Row)	Locker 7 (Top Row)	Locker 8 (Top Row)	Locker 9 (Top Row)	Locker 10 (Top Row)
Locker 1 (Bottom Row)	Locker 2 (Bottom Row)	Locker 3 (Bottom Row)	Locker 4 (Bottom Row)	Locker 5 (Bottom Row)	Locker 6 (Bottom Row)	Locker 7 (Bottom Row)	Locker 8 (Bottom Row)	Locker 9 (Bottom Row)	Locker 10 (Bottom Row)

Red bench

Clear storage bin

Red jacket

Black cap

CARTER

RABLOFF

RABLOFF











