
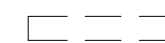




1 2 3 4 5 6 7 8 9 10 11 12 13 14 15 16 17 18 19 20

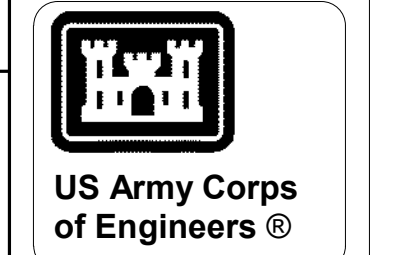
P
N
M
L
K
J
H
G
F
E
D
C
B
A

DEMOLITION LEGEND

-  EXISTING ELEMENTS
-  ELEMENTS TO BE DEMOLISHED
-  EXISTING DOORS
-  DOORS TO BE DEMOLISHED

- ### DEMOLITION NOTES
- DRAWINGS OF EXISTING CONDITIONS HAVE BEEN COMPILED FROM EXISTING DATA SUPPLIED TO THE A/E. THE ARCHITECT A/E MAKES NO WARRANTY, EITHER EXPRESSED OR IMPLIED, FOR THE ACCURACY OR COMPLETENESS OF THE EXISTING INFORMATION RECORDED. THE CONTRACTOR SHALL FIELD VERIFY ALL EXISTING CONDITIONS AND NOTIFY THE C.O. IMMEDIATELY OF ANY DISCREPANCIES OR CONFLICTS THAT MIGHT ARISE IN THE COURSE OF DEMOLITION WORK.
 - VERIFY LOCATIONS OF EXISTING MECHANICAL, PLUMBING AND ELECTRICAL UTILITIES. LOCATE AND PROTECT UTILITIES TO REMAIN. DISCONNECT, REMOVE BACK TO THE NEAREST JUNCTION BOX OR PANEL AS REQUIRED AND CAP DESIGNED UTILITIES WITHIN THE DEMOLITION AREA. REFER TO THE MECHANICAL, PLUMBING AND ELECTRICAL DRAWINGS FOR ADDITIONAL INFO.
 - THE DEMOLITIONS ARE DIAGRAMMATIC AND GENERAL IN NATURE. THE INTENT IS TO ILLUSTRATE DEMOLITION REQUIRED IN THE SPACES UNLESS NOTED OTHERWISE. FIELD VERIFICATION OF EXISTING CONDITIONS AND DETERMINATION OF SPECIFIC QUANTITIES ARE THE RESPONSIBILITY OF THE CONTRACTOR.
 - REMOVAL AND DISPOSAL OF DEMOLITION DEBRIS IS THE RESPONSIBILITY OF THE CONTRACTOR. VERIFY THE HAULING ROUTE THROUGH THE BUILDING, DEMOLITION STAGING AREA AND THE LOCATION OF THE DUMPSTER WITH THE C.O. PRIOR TO THE START OF THE DEMOLITION. DISPOSAL OF RUBBISH SHALL BE DONE IN A LEGAL MANNER.
 - REMOVE AND DISPOSE OF ALL FF&E TO INCLUDE OVERHEAD CRANES AND RAILING/ TRACKS.
 - REMOVE AND DISPOSE OF ALL INTERIOR FINISHES ON WALL, FLOORS, AND CEILINGS. GRIND AND CLEAN SLAB ON GRADE TO RECEIVE NEW FINISHES

- ### KEYNOTES
- REMOVE EXISTING EXTERIOR DOOR
 - REMOVE EXISTING LOUVER
 - REMOVE EXISTING OVERHEAD DOOR
 - REMOVE EXISTING WINDOW
 - DEMO EXTERIOR WALL FOR NEW WINDOW SYSTEM
 - DEMO EXTERIOR WALL FOR NEW EXTERIOR DOOR
 - FIRE RISER TO REMAIN
 - DEMO VAULT DOOR AND VAULT ENCLOSURE
 - REMOVE EXTERIOR CANOPY STRUCTURE
 - DEMO SCREEN WALL



MARK	DESCRIPTION	DATE

ISSUE DATE: JUNE 2024	SOLICITATION NO.:
DESIGNED BY: D. CAMBEUL	CHECKED BY: A. RIVARD
DRAWN BY: V. SOTILO	SUBMITTED BY: C. SEGHI
CONTRACT NO.:	SIZE: ANSI D

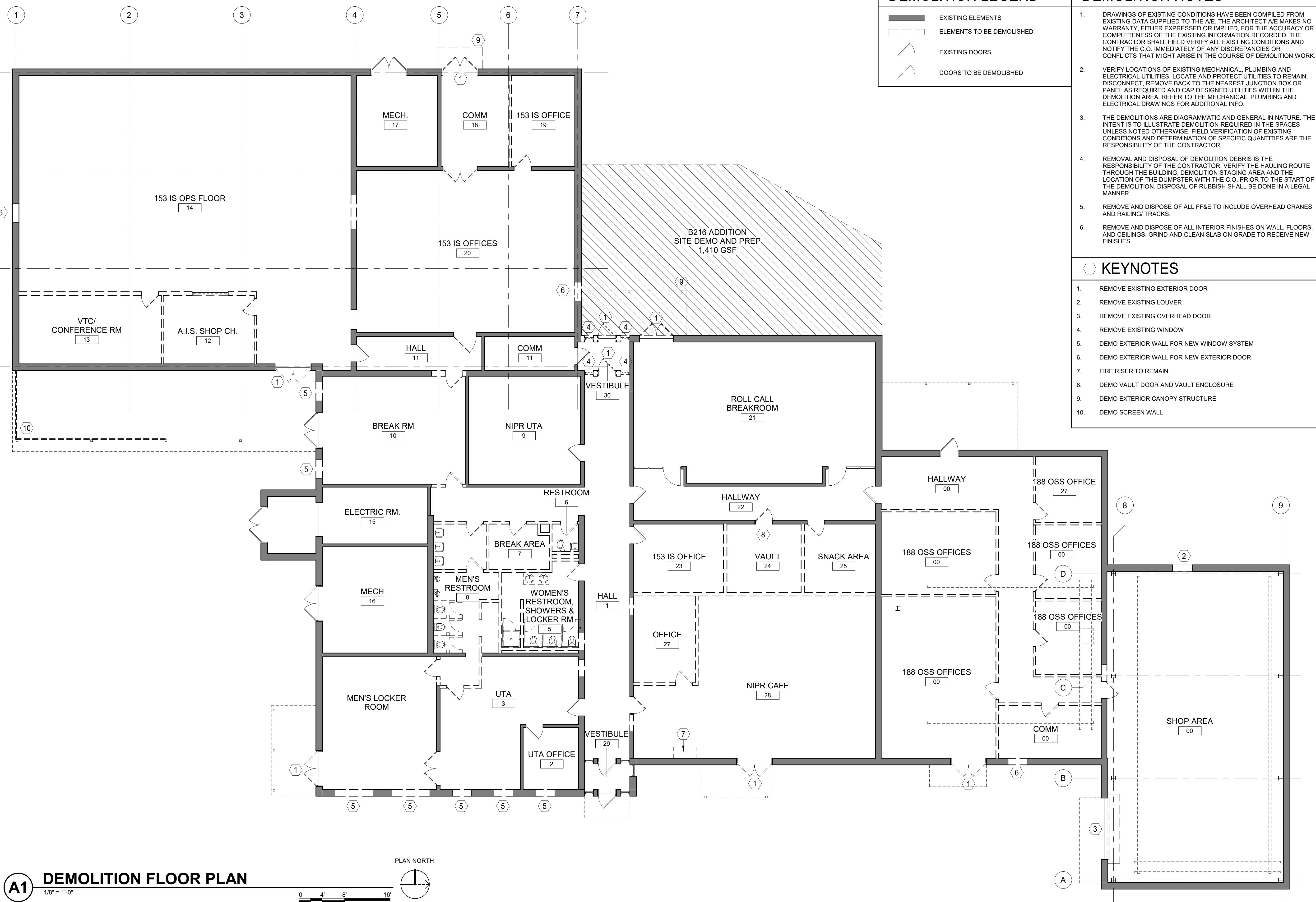
US ARMY CORPS OF ENGINEERS



BLAIRPREMY
ARCHITECTS

FORT SMITH, ARKANSAS
EBBING ANGE RENO
100691-00
DEMO FLOOR PLAN
BUILDING 216

SHEET ID
AD101

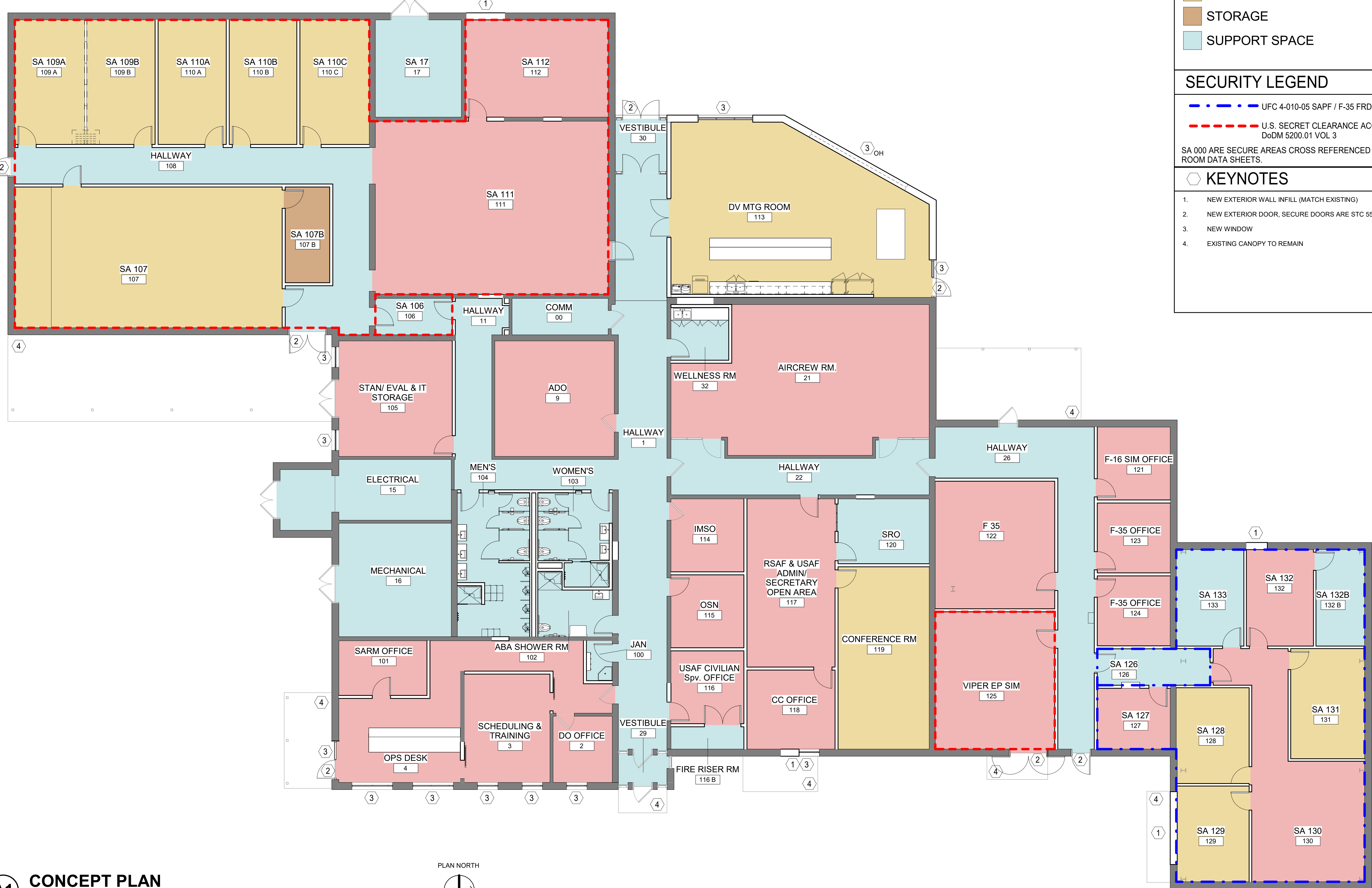


A1 DEMOLITION FLOOR PLAN
1/8" = 1'-0"

PLAN NORTH



Plot Date: 6/25/2024 1:56:22 PM File Path: \\adbbg\adbbg\ANGB\Reco\100691-00\Ebbsng\ANGB\Reco\B216_A22.rvt



PROGRAMMING LEGEND

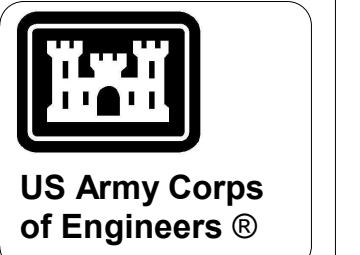
- ADMIN SPACE
- DEBRIEF/MTG
- STORAGE
- SUPPORT SPACE

SECURITY LEGEND

- UFC 4-010-05 SAPF / F-35 FRD
 - U.S. SECRET CLEARANCE ACCESS
DoDM 5200.01 VOL 3
- SA 000 ARE SECURE AREAS CROSS REFERENCED WITHIN THE ROOM DATA SHEETS.

KEYNOTES

1. NEW EXTERIOR WALL INFILL (MATCH EXISTING)
2. NEW EXTERIOR DOOR, SECURE DOORS ARE STC 55 MIN
3. NEW WINDOW
4. EXISTING CANOPY TO REMAIN



US Army Corps of Engineers®

MARK	DESCRIPTION	DATE

ISSUE DATE: JUNE 2024	SOLICITATION NO.:	CONTRACT NO.:
DESIGNED BY: D. CAMBEUL	DRAWN BY: V. SOTILO	CHECKED BY: A. RIVARD
		SUBMITTED BY: C. SEGHI
		SIZE: ANSI D

US ARMY CORPS OF ENGINEERS

BLAIRPREMY

FORT SMITH, ARKANSAS
EBBING ANGE RENO
100691-00
ARCHITECTURAL CONCEPT PLAN
BUILDING 216

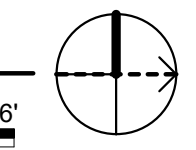
SHEET ID
AE101

A1 CONCEPT PLAN

1/8" = 1'-0"



PLAN NORTH



GENERAL NOTES

- ALL FURNITURE SHOWN IS CONCEPTUAL IN NATURE AND WILL NOT BE SPECIFIED AS PART OF THIS PROJECT.



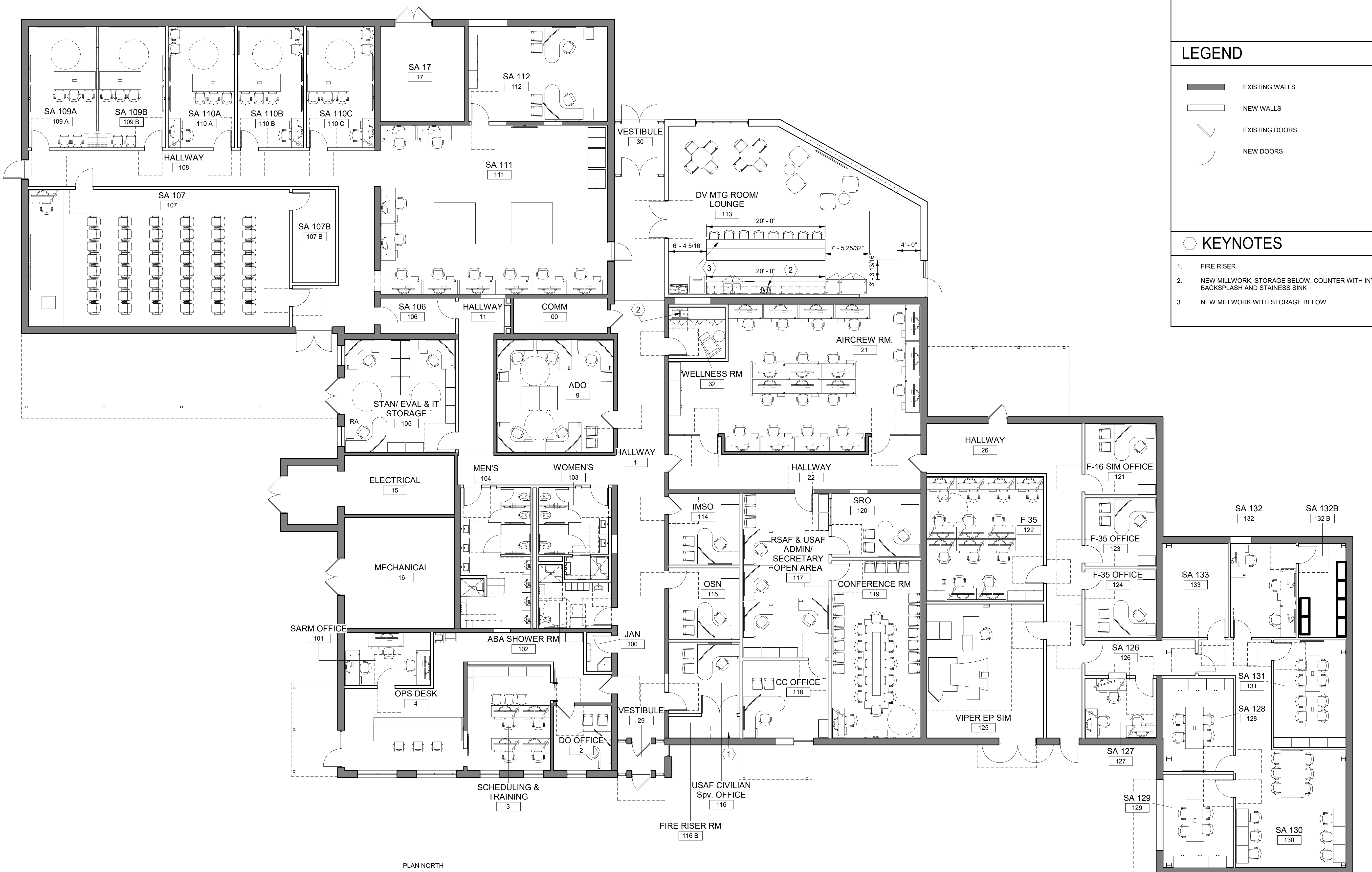
US Army Corps of Engineers®

LEGEND

- EXISTING WALLS
- NEW WALLS
- EXISTING DOORS
- NEW DOORS

KEYNOTES

- FIRE RISER
- NEW MILLWORK, STORAGE BELOW, COUNTER WITH INTEGRAL BACKSPASH AND STAINLESS SINK
- NEW MILLWORK WITH STORAGE BELOW

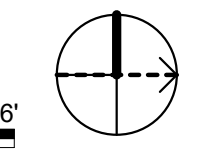


A1 FURNITURE PLAN

1/8" = 1'-0"



PLAN NORTH



MARK	DESCRIPTION	DATE

ISSUE DATE: JUNE 2024	SOLICITATION NO.:
DESIGNED BY: T. JOHNSON	CHECKED BY: A. RIVARD
DRAWN BY: T. JOHNSON	SUBMITTED BY: C. SEGHI
CONTRACT NO.:	SIZE: ANSI D

US ARMY CORPS OF ENGINEERS

BLAIRREMY

FORT SMITH, ARKANSAS
EBBING ANGE RENO
100691-00
FURNITURE PLANS
BUILDING 216

SHEET ID

IF101