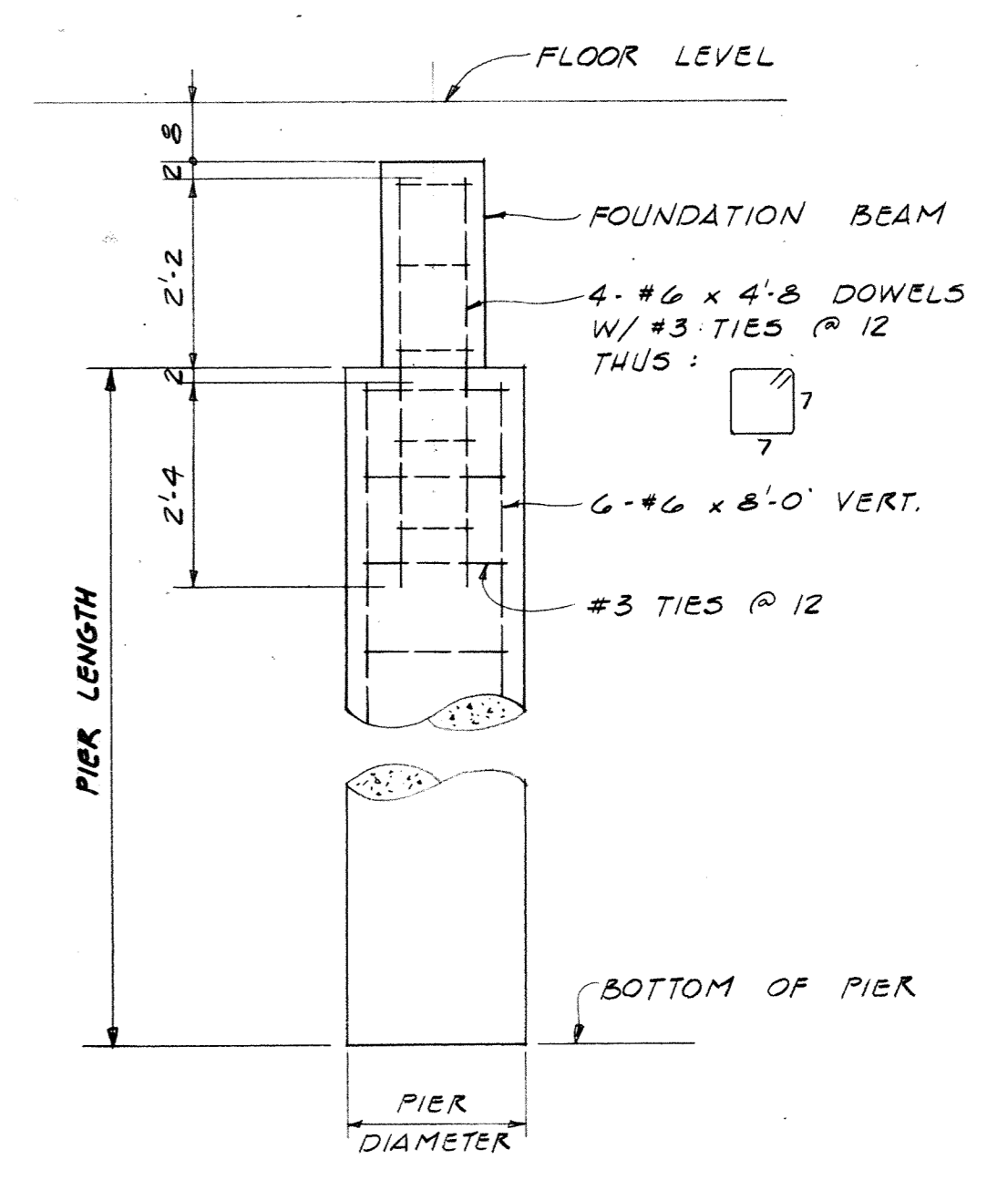
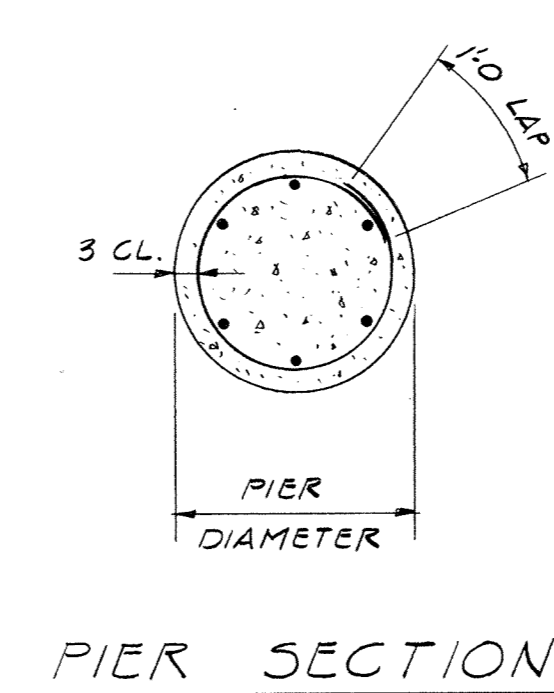
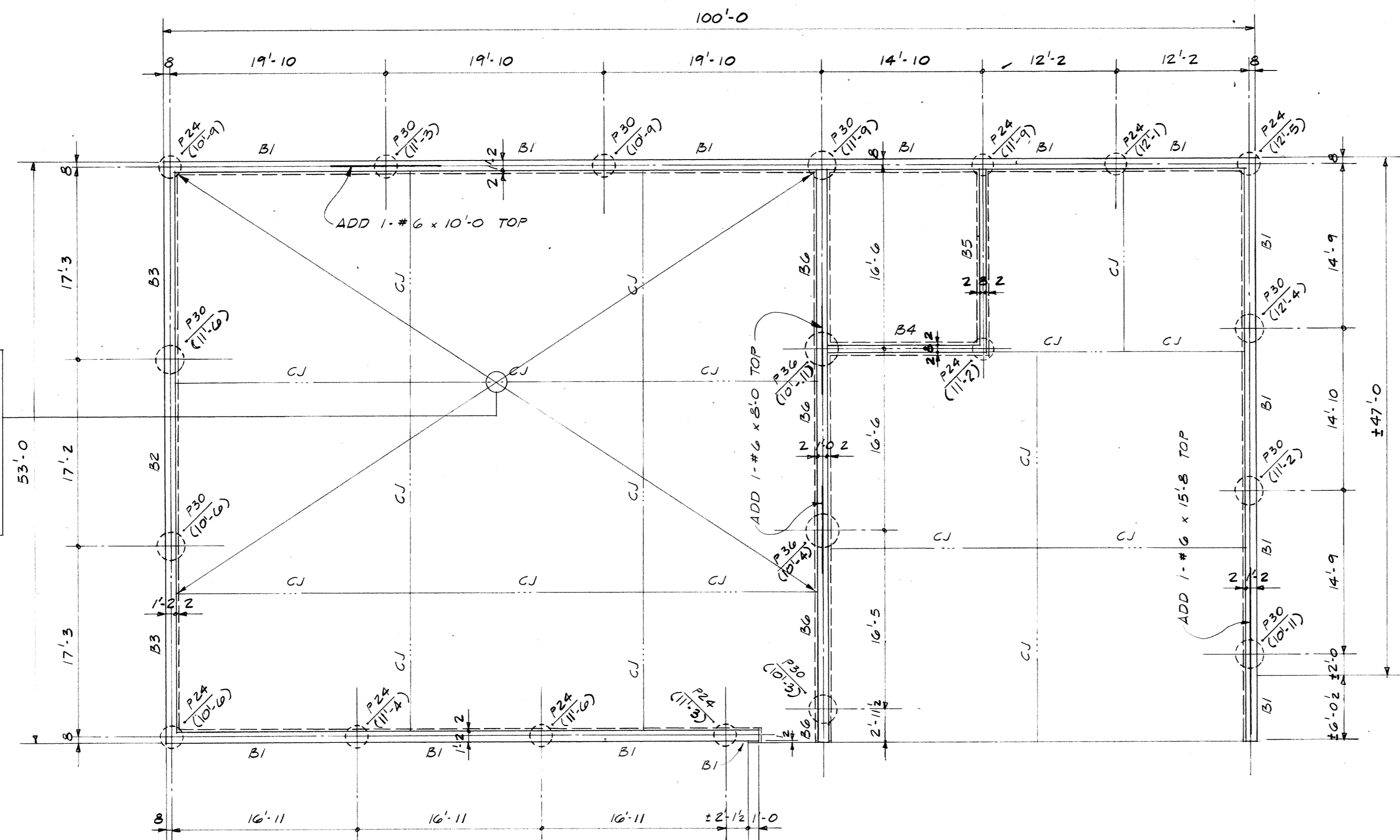
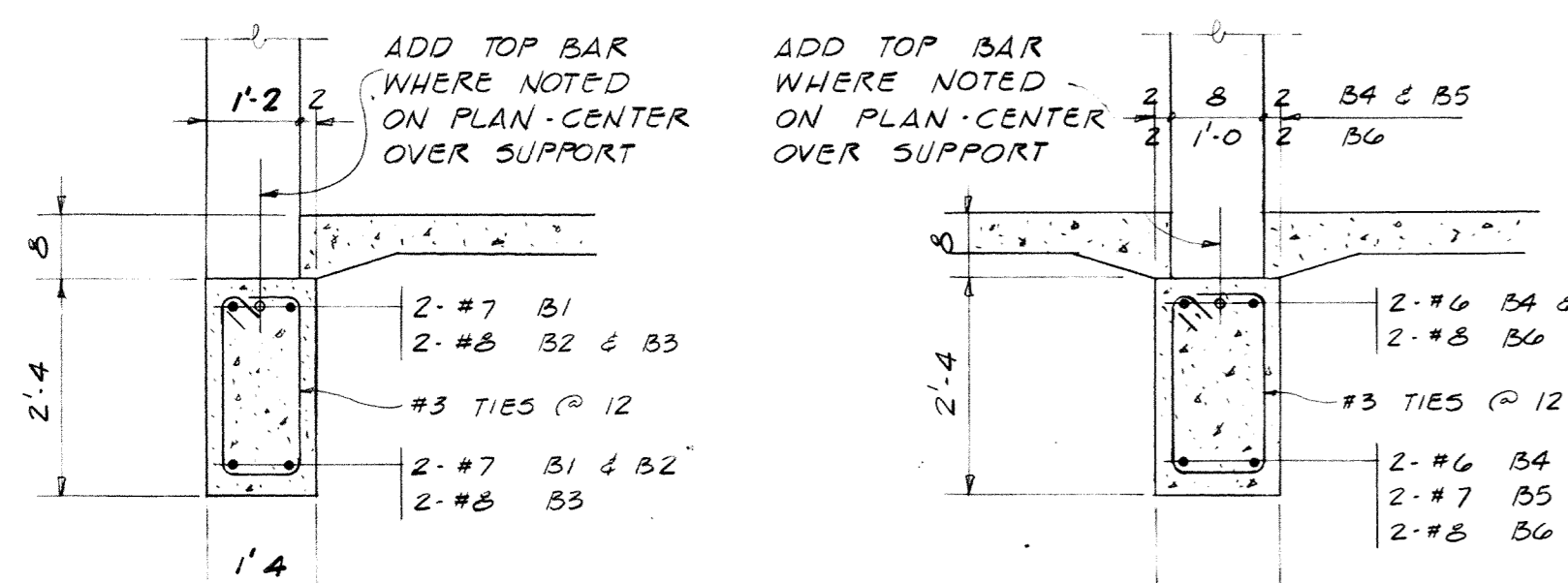


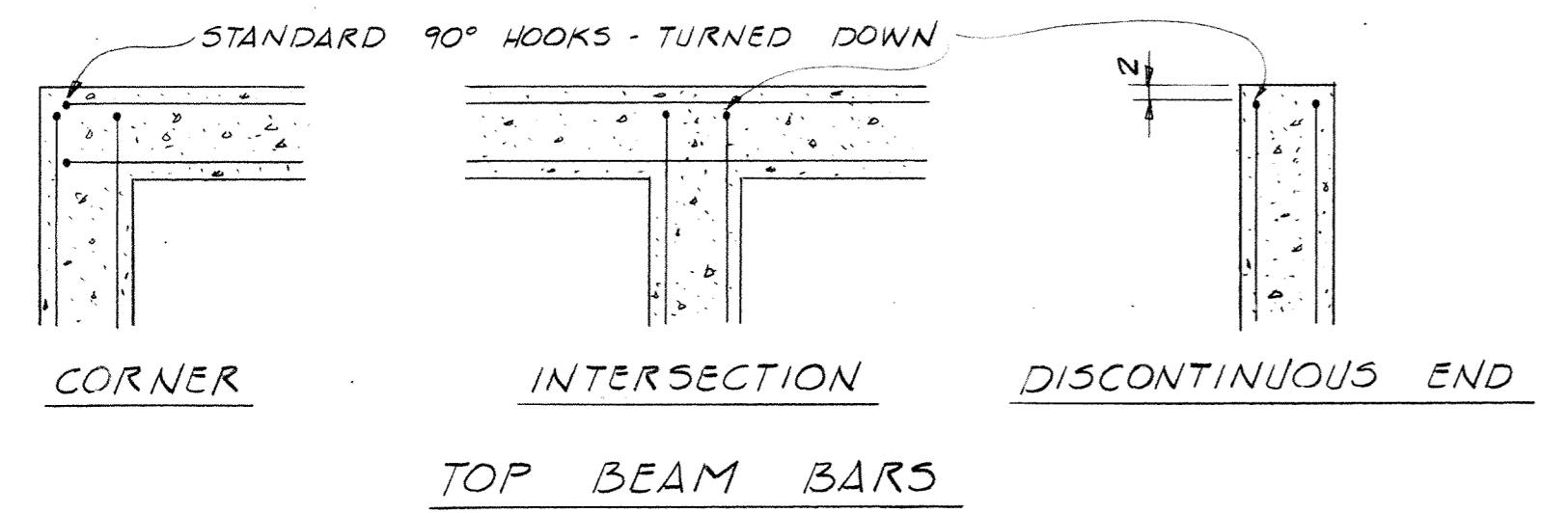
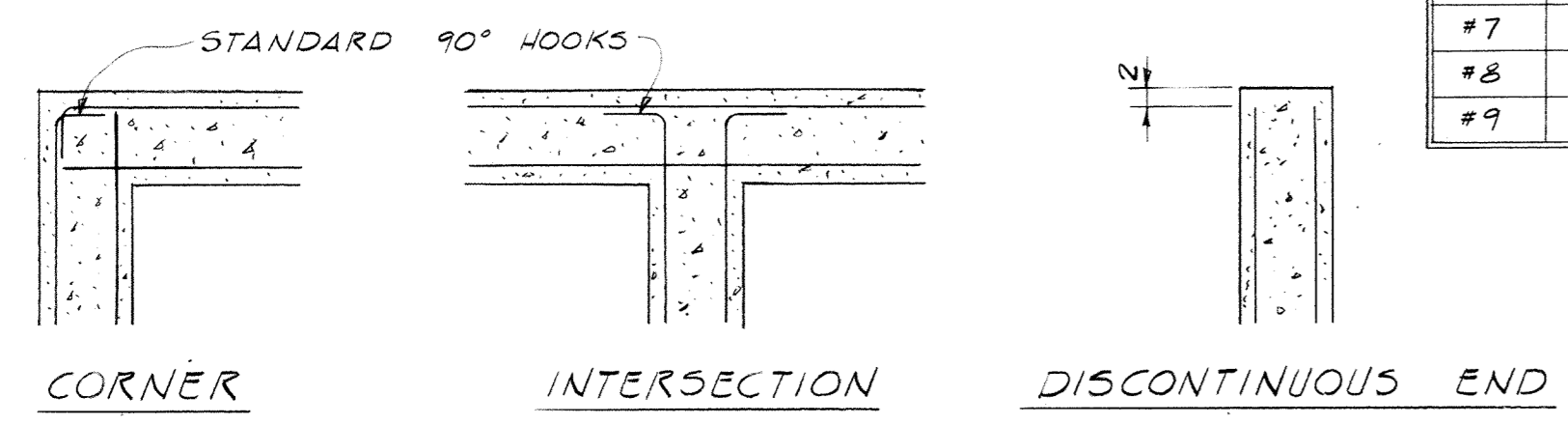
NOTE: FLOOR SLAB THIS AREA MUST BE FINISHED TO A PLANE SURFACE WITH A TOLERANCE OF 1/8" IN 10'-0" WHEN MEASURED WITH A 10' STRAIGHTEDGE PLACED AT ANY LOCATION ON THE FLOOR AND IN ANY DIRECTION. THIS PLANARITY IS NECESSARY FOR EQUIPMENT FUNCTION AND IF IT IS NOT ACHIEVED, THE SLAB WILL NOT BE ACCEPTED.



NOTES: 1. FOUNDATION PIERS ARE INDICATED ON PLAN. THIS: (P30) INDICATES PIER DIAMETER IN INCHES. DIMEN. FROM BOTM. FNDN. SM. TO BOTM. PIER. 2. PLACE BOTTOMS OF ALL PIERS IN MEDIUM HARD DARK GRAY SHALE. REFER TO THE GEOTECHNICAL INVESTIGATION FOR LEVELS AT WHICH THIS MATERIAL WAS ENCOUNTERED IN TEST BORINGS. IN ANY CASE MINIMUM PIER LENGTH = 5'-0"



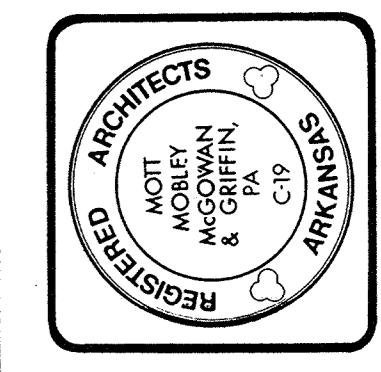
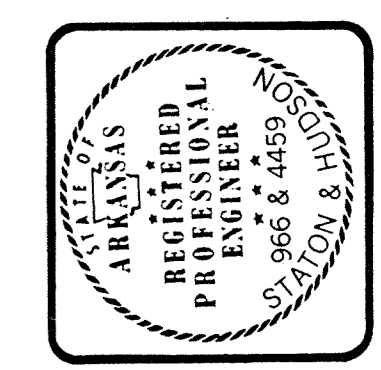
BAR SIZE	LAP LENGTH	
	BEAM TOP BARS	OTHER BARS
#4	-	1'-8"
#5	-	2'-2"
#6	3'-10"	2'-10"
#7	5'-2"	3'-10"
#8	6'-10"	5'-0"
#9	8'-8"	6'-2"



FOUNDATION PLAN  
1/8" = 1'-0"  
REF. NORTH

NOTE: 1. INSTALL 5" SLAB ON 4" DRAINAGE FILL IN ALL NEW FLOOR AREAS. ELEVATION OF TOP OF SLAB TO MATCH EXISTING FLOOR LEVEL.  
2. VERIFY DIMENSIONS DEPENDENT ON EXISTING CONSTRUCTION.

**MM MG**  
Mott Mobley McGowan & Griffin, P.A.: Architects  
302 North Sixth Street  
Fort Smith, Arkansas 72901



CONTRACT NO. DAHA03-87-C-70007  
PROJECT NO. FSM-40997  
**ADD./ALTER AVONICS/ECM POD SHOP/STORAGE**  
AIR NATIONAL GUARD TRAINING FACILITY  
MUNICIPAL AIRPORT - FT. SMITH, ARKANSAS

FDN. PLAN

As-built info:  
4-12-90  
Revisions  
**1357**  
Plan Number  
11-16-88  
Date  
**S1.1**  
Or 28