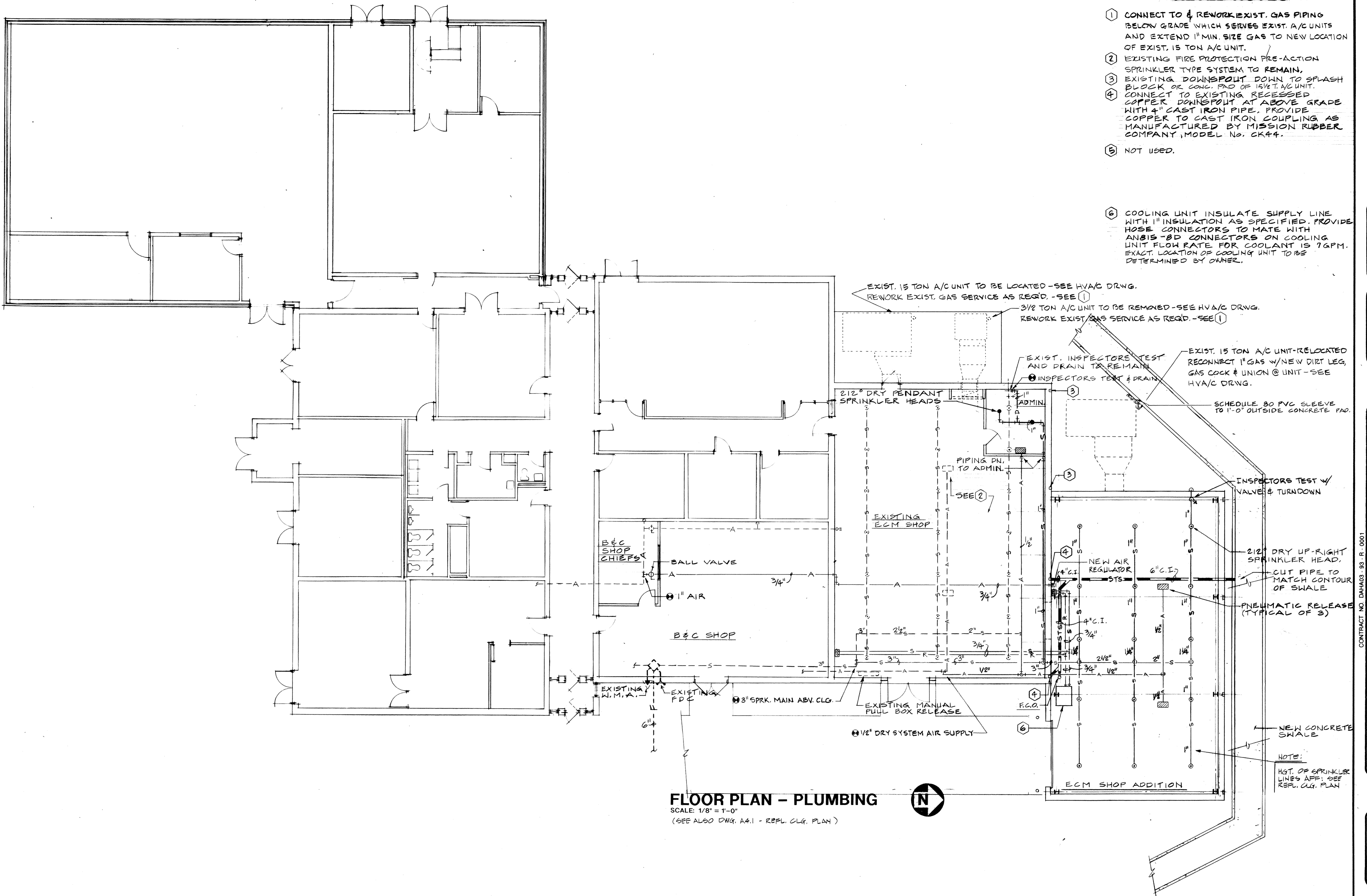


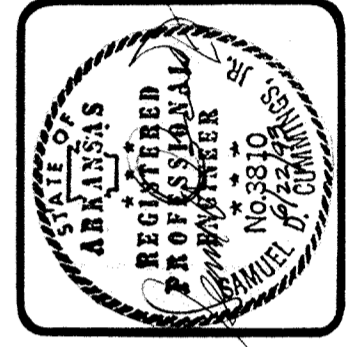
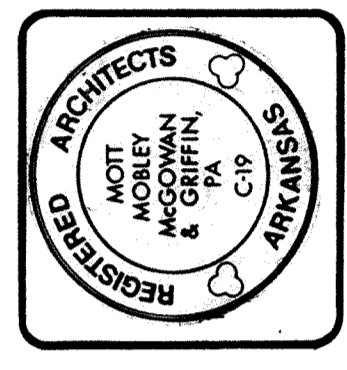
KEYED NOTES

- ① CONNECT TO & REWORK EXIST. GAS PIPING BELOW GRADE WHICH SERVES EXIST. A/C UNITS AND EXTEND 1" MIN. SIZE GAS TO NEW LOCATION OF EXIST. 15 TON A/C UNIT.
- ② EXISTING FIRE PROTECTION PRE-ACTION SPRINKLER TYPE SYSTEM TO REMAIN.
- ③ EXISTING DOWNSPOUT DOWN TO SPLASH BLOCK OR CONC. PAD OF 15 FT. A/C UNIT.
- ④ CONNECT TO EXISTING RECESSED COPPER DOWNSPOUT AT ABOVE GRADE WITH 4" CAST IRON PIPE, PROVIDE COPPER TO CAST IRON COUPLING AS MANUFACTURED BY MISSION RUBBER COMPANY, MODEL No. CR44.
- ⑤ NOT USED.
- ⑥ COOLING UNIT INSULATE SUPPLY LINE WITH 1" INSULATION AS SPECIFIED. PROVIDE HOSE CONNECTORS TO MATE WITH ANSI B8D CONNECTORS ON COOLING UNIT. FLOW RATE FOR COOLANT IS 7 GPM. EXACT LOCATION OF COOLING UNIT TO BE DETERMINED BY OWNER.



FLOOR PLAN - PLUMBING
 SCALE: 1/8" = 1'-0"
 (SEE ALSO DWG. A4.1 - REPL. CLG. PLAN)

MM MG
 Moti Mobley McGowan & Griffin, P.A.: Architects
 302 North Sixth Street
 Fort Smith, Arkansas 72901



CONTRACT NO. DAH403-93-R-0001
 PROJECT NO. HKRZ929948
ADD./ ALTER. ECM POD SHOP
 AIR NATIONAL GUARD TRAINING FACILITY
 MUNICIPAL AIRPORT - FT. SMITH, ARKANSAS

FLOOR PLAN - PLUMBING

Revisions	
1440	P1.1
7-30-93	
Date	Or