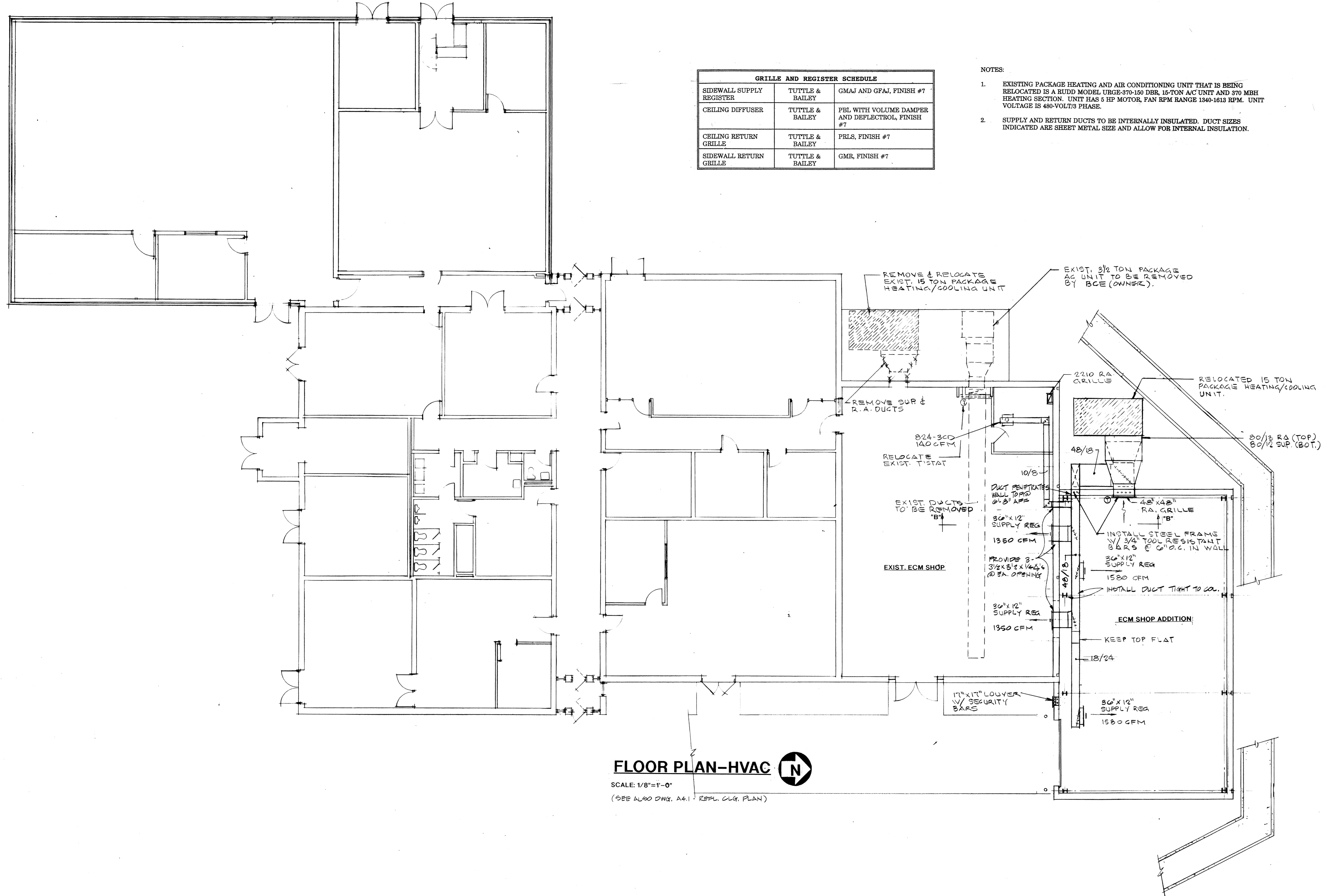


GRILLE AND REGISTER SCHEDULE		
SIDEWALL SUPPLY REGISTER	TUTTLE & BAILEY	GMAJ AND GFAJ, FINISH #7
CEILING DIFFUSER	TUTTLE & BAILEY	PBL WITH VOLUME DAMPER AND DEFLECTROL, FINISH #7
CEILING RETURN GRILLE	TUTTLE & BAILEY	PRLS, FINISH #7
SIDEWALL RETURN GRILLE	TUTTLE & BAILEY	GMR, FINISH #7

- NOTES:
- EXISTING PACKAGE HEATING AND AIR CONDITIONING UNIT THAT IS BEING RELOCATED IS A RUDD MODEL URGE-370-150 DER, 15-TON A/C UNIT AND 370 MBH HEATING SECTION. UNIT HAS 5 HP MOTOR, FAN RPM RANGE 1340-1613 RPM. UNIT VOLTAGE IS 480-VOLT/3 PHASE.
 - SUPPLY AND RETURN DUCTS TO BE INTERNALLY INSULATED. DUCT SIZES INDICATED ARE SHEET METAL SIZE AND ALLOW FOR INTERNAL INSULATION.

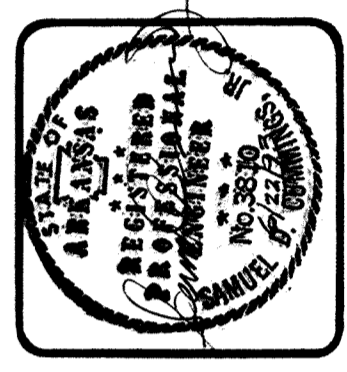
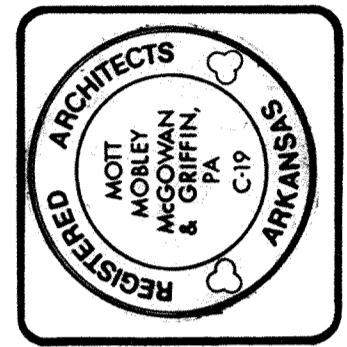


FLOOR PLAN-HVAC 

SCALE: 1/8"=1'-0"

(SEE ALSO DNG. A4.1 - REPL. CLG. PLAN)

MM MG
 Mott Mobley McGowan & Griffin, P.A.: Architects
 302 North Sixth Street
 Fort Smith, Arkansas 72901



CONTRACT NO. DAHA03-93-R-0001

PROJECT NO. HKRZ929948

ADD./ ALTER. ECM POD SHOP

AIR NATIONAL GUARD TRAINING FACILITY
 MUNICIPAL AIRPORT - FT. SMITH, ARKANSAS

FLOOR PLAN-HVAC

Revisions	
Plan Number	M1.1
Date	7-30-93