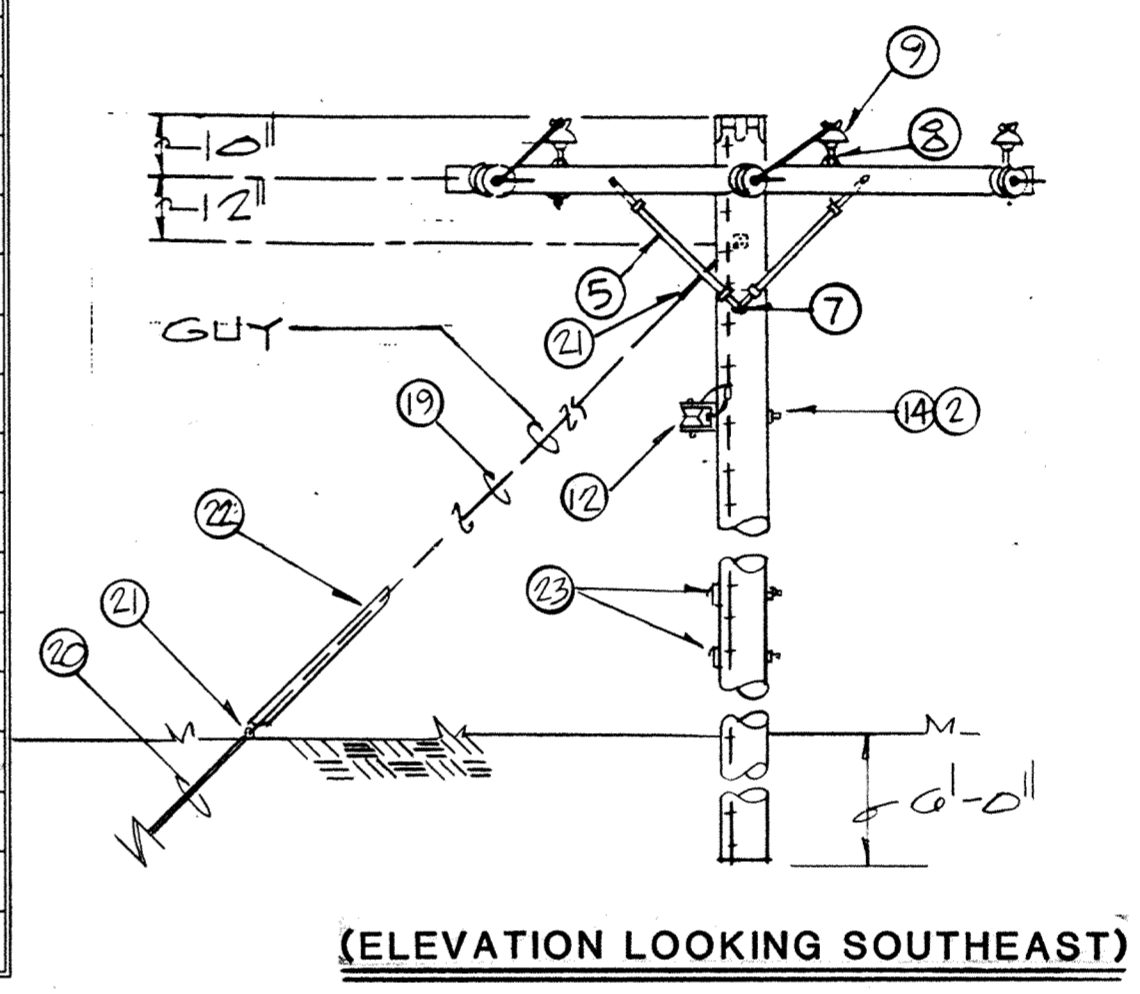
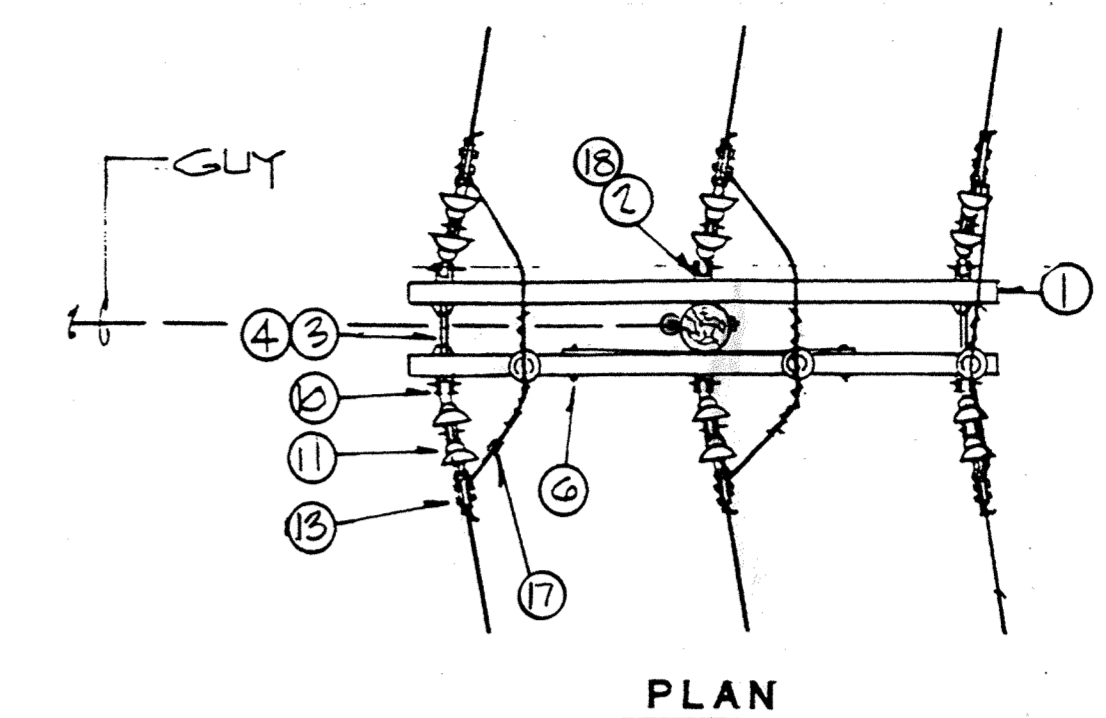


**PARTIAL
SITE PLAN-ELECTRICAL**
SCALE: 1"=20'-0"

MATERIAL LIST

ITEM	DESCRIPTION	QUANTITY
1	CROSSARM, WOOD, 8' - FOR STEEL PINS	2
2	BOLT, MACHINE, 5/8" X REQUIRED LENGTH	4
3	BOLT, DOUBLE - ARMING, 5/8" X REQUIRED LENGTH	2
4	WASHER, SQUARE, 2 1/4"	4
5	BRACE, WOOD, CROSSARM	2
6	BOLT, CARRIAGE, 5/8" X 4 1/2"	2
7	SCREW, LAG, 1/2" X 4"	1
8	PIN, INSULATOR, STEEL	3
9	INSULATOR, PIN TYPE, 15KV	3
10	NUT, EYE	6
11	INSULATOR, SUSPENSION, 4 1/4"	12
12	ONE SPOOL RACK	1
13	CLAMP, DEADEND, COPPER (REQUIRED SIZE & TYPE)	6
14	WASHER, CURVED, 2 1/4"	3
15	WIRE, TIE, #6 COPPER	0.9#
16	POLE, 35', CLASS 5	1
17	CONNECTOR, COMPRESSION, COPPER (REQUIRED SIZE)	3
18	SHACKLE, GALVANIZED, 1/2"	6
19	GUY, DOWN 3/8"	3
20	ANCHOR, 8" PLATE, WITH 5/8" ROD & TRIPLEYE	1
21	GRIP, PRE-FORMED, 3/8"	6
22	GUY, GUARD	1
23	CABLE CLAMP	2

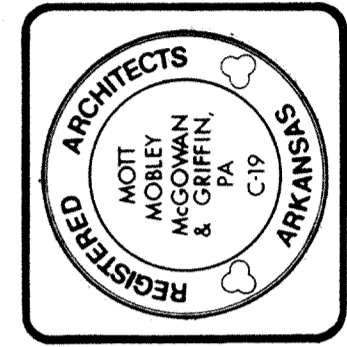


POLE DETAIL
N.T.S.

LEGEND

SYMBOL	DESCRIPTION	SYMBOL	DESCRIPTION
	FLUORESCENT LIGHTING OUTLET - CEILING-MOUNTED		FIRE ALARM AUDIO/VISUAL DEVICE
	FLUORESCENT LIGHTING OUTLET - WALL-MOUNTED		FIRE ALARM VISUAL DEVICE
	INCANDESCENT OR HID LIGHTING OUTLET - CEILING-MOUNTED		FIRE ALARM PULL STATION
	INCANDESCENT OR HID LIGHTING OUTLET - WALL-MOUNTED		DUCT SMOKE DETECTOR
	EMERGENCY LIGHTING OUTLET		SMOKE DETECTOR
	EXIT SIGN		INDICATED SURFACE-MOUNTED DEVICE - SEE PLAN FOR REQUIRED DEVICE
	SINGLE-POLE SWITCH		REMOTE TEST FOR DUCT DETECTOR
	THREE-WAY SWITCH		DENOTES DEVICE NOT REQUIRED FOR THIS PROJECT
	DUPLEX RECEPTACLE		COMMUNICATIONS OUTLET
	QUADRAPLEX RECEPTACLE		
	DUPLEX RECEPTACLE - ABOVE COUNTER HEIGHT INDICATED - VERIFY MOUNTING HEIGHT WITH ARCHITECTURAL DRAWINGS.		
	DUPLEX RECEPTACLE - GROUND FAULT INTERRUPTING, ISOLATING GROUND, SURGE PROTECTION, AND WEATHERPROOF TYPES INDICATED		
	TWIST-LOCK RECEPTACLE		
	SPECIAL PURPOSE OUTLET - NEMA CONFIGURATION (VOLTAGE, AMPACITY) INDICATED		
	BRANCH CIRCUIT IN CONDUIT - SWITCH LEG, HOT LEG, NEUTRAL, EQUIPMENT GROUND, AND ISOLATED GROUND INDICATED		
	BRANCH CIRCUIT HOMERUN - PANEL AND CIRCUIT NUMBER INDICATED		
	FLEXIBLE CONDUIT		
	JUNCTION BOX		
	SAFETY DISCONNECT SWITCH - SIZE NOTED ON PLAN		
	SURFACE-MOUNTED PANEL BOARD		

**MM
MG**
Mott Mobley McGowan & Griffin, P.A.: Architects
302 North Sixth Street
Fort Smith, Arkansas 72901



CONTRACT NO. DAHA03-93-R-0001
PROJECT NO. HKFZ929948
ADD./ ALTER. ECM POD SHOP
AIR NATIONAL GUARD TRAINING FACILITY
MUNICIPAL AIRPORT - FT. SMITH, ARKANSAS

Revisions	
1440	E-1
7-30-93	
Date	Or