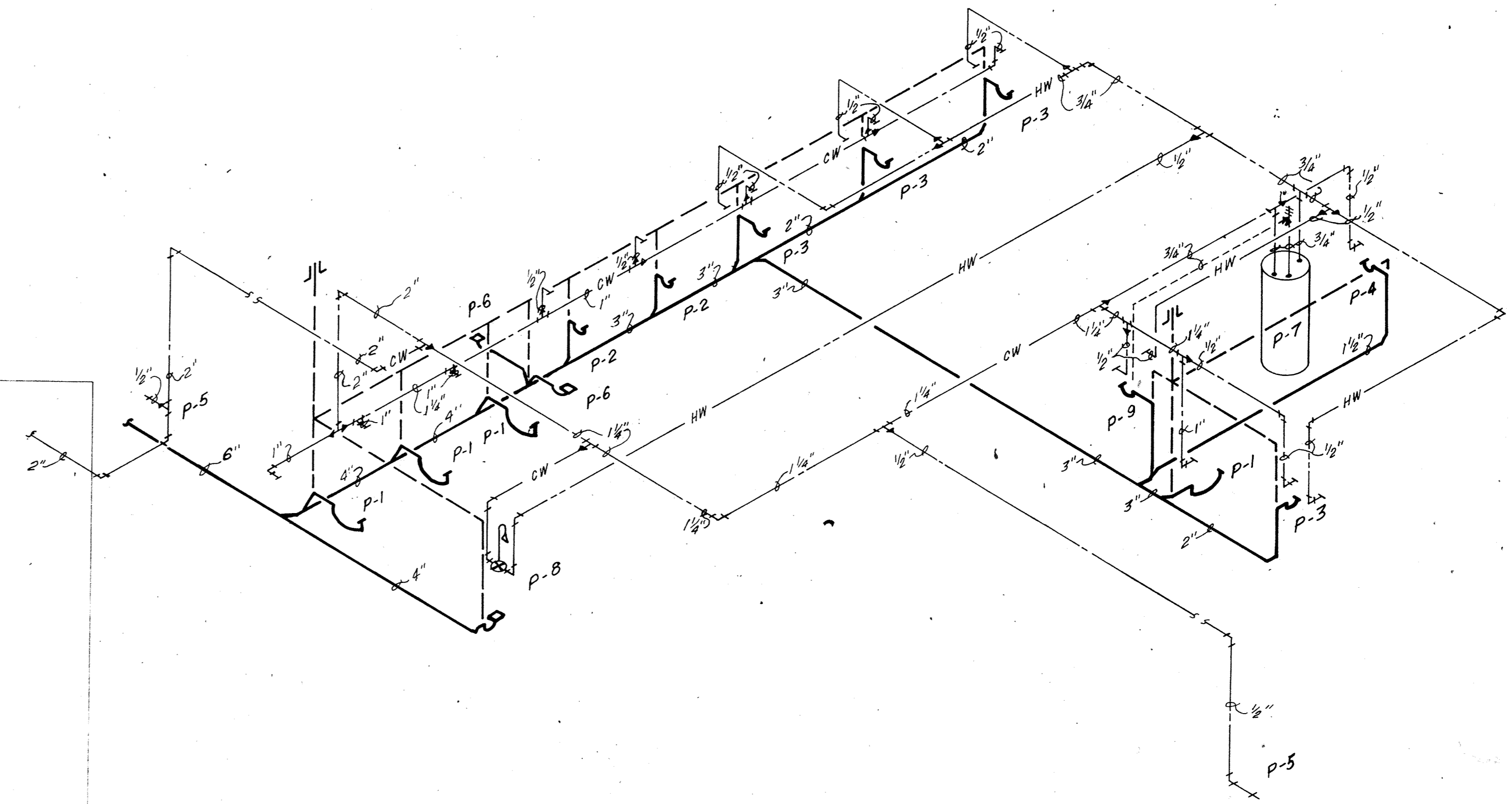
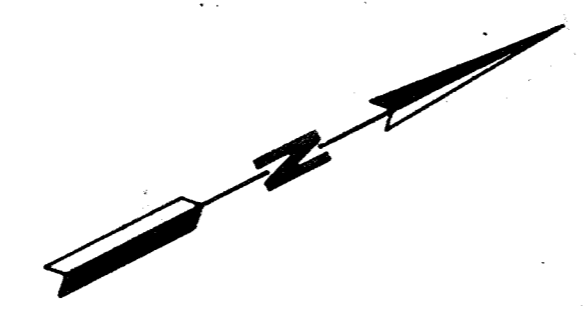


**PLUMBING PLAN**  
 SCALE: 1/8" = 1'-0"



**PLUMBING RISER**  
 -NO SCALE-

**LEGEND**

- CW — DOMESTIC COLD WATER
- HW — DOMESTIC HOT WATER
- G — NATURAL GAS (1/2 PSIG)
- CA — COMPRESSED AIR (250PSIG)
- — — SANITARY DRAIN
- — — SANITARY VENT
- >— COMPRESSED AIR OUTLET

**PLUMBING FIXTURE SCHEDULE**

- P-1 "AMERICAN-STANDARD", "AFTON" SIPHON JET, ELONGATED BOWL - 1-1/2" SPUD, VITREOUS CHINA TOILET #2206.027. INCLUDE: #5320.114 SOLID PLASTIC (WHITE), OPEN FRONT SEAT WITH STAINLESS STEEL CHECK HINGE, "SLOAN ROYAL" #110 FLUSH VALVE AND ALL APPURTENANCES.
- P-2 "AMERICAN-STANDARD", WASHBROOK WALL-MOUNTED VITREOUS CHINA WASHOUT URINAL #6500.011-3/4" TOP SPUD, 2" OUTLET. USE "SLOAN-ROYAL" #186-11 QUIET ACTING FLUSH VALVE (3/4"). MOUNT RIM AT 24" A.F.F.
- P-3 "AMERICAN-STANDARD", "ROXALYN" VITREOUS CHINA, WALL HUNG LAVATORY #0195.289 (20" X 18"). INCLUDE: #2179.091 AMUARIAN FAUCET, 1-1/4" GRID DRAIN AND P-TRAP WITH CLEAN-OUT, APPROVED WALL CARRIERS, 3/8" CHROME SUPPLY WITH LOOSE-KEY STOP, AND ALL APPURTENANCES. MOUNT RIM AT 31" A.F.F.
- P-4 "HALSEY-TAYLOR" WALL-MOUNTED ELECTRIC WATER COOLER. MODEL #5W6A WITH STANDARD FINISH. MOUNT RIM @ 40" A.F.F. INCLUDE ALL TRIM, SUPPORTS AND APPURTENANCES.
- P-5 "WOODFORD" MODEL #15 FREEZELESS WALL HYDRANT, 3/4" WITH VACUUM BREAKER, LENGTH, ETC., TO SUIT. MOUNT AT 24" ABOVE FINISHED GRADE.
- P-6 "JOSAM" CAST IRON FLOOR DRAIN, TYPE #30002-2", WITH POLISHED BRASS ADJUSTABLE SUPER-FLOW STRAINER. INCLUDE TRAP AND ALL APPURTENANCES.
- P-7 "RUUD" MODEL #RH-75-63-5 AUTOMATIC GAS STORAGE WATER HEATER. 75 GALLON CAPACITY. 75,500 BTUH INPUT. 3/4" WATER CONNECTIONS, 1/2" GAS CONNECTION, 5" FLUE, (63.4 GPH RECOVERY @ 100°F RISE).
- P-8 SHOWER FITTINGS: "AMERICAN-STANDARD" #1490.015 "AQUARIAN II" FIXTURES COMPLETE WITH ALL APPURTENANCES. P-6 DRAIN TO BE INSTALLED IN 4 LB. LEAD PAN.
- P-9 "AMERICAN-STANDARD" #7692.023 SERVICE SINK (22"X18"), COMPLETE WITH ALL TRIM AND FITTINGS.

1. REFER TO SPECIFICATIONS.
2. ALL PLUMBING WILL CONFORM TO STATE OF ARKANSAS PLUMBING CODE, LOCAL ORDINANCES, AIR FORCE PUBLICATION AFM-88 AND NATIONAL STANDARDS PLUMBING CODE. WHERE CONTRADICTIONS OCCUR, THE MORE STRINGENT REGULATIONS WILL GOVERN.
3. CONTRACTOR WILL BE RESPONSIBLE TO VERIFY EXACT LOCATIONS OF DRAINAGE, SERVICE AND UTILITY CONNECTIONS FOR ALL EQUIPMENT REQUIRING SAME. CONTRACTOR TO VERIFY ALL UTILITY SIZES, LOCATIONS, GRADES AND CONDITIONS PRIOR TO BIDDING.
4. APPROVED VACUUM BREAKERS, ETC., WILL BE USED WHEREVER NECESSARY TO PREVENT BACK SIPHONING ON DOMESTIC WATER SYSTEMS.
5. INSTALL SYSTEM AND EQUIPMENT ISOLATION VALVES, AS INDICATED, OR AS OTHERWISE SPECIFIED IN STATE PLUMBING CODE.
6. DOMESTIC HOT WATER LINES WILL BE INSTALLED ABOVE GRADE AS SHOWN AND INSULATED PER SPECIFICATIONS. DOMESTIC COLD WATER PIPING IS SHOWN ABOVE SLAB. ALL DOMESTIC COLD WATER PIPING ABOVE GRADE, INSIDE BUILDING, WILL BE INSULATED 1/2" THICK PER SPECIFICATIONS.
7. PLUMBER WILL VERIFY SPACE AVAILABLE VERSUS CARRIERS AND OTHER PLUMBING DEVICES REQUIRED IN PLUMBING CHASES, ETC. PLUMBER IS ADVISED TO USE "SPACE-SAVER" TYPE CARRIERS FOR WALL-MOUNTED TOILETS, ETC.
8. PLUMBING CONTRACTOR SHALL PROVIDE ALL NECESSARY TRIM AND APPURTENANCES FOR COMPLETE INSTALLATION OF PLUMBING FIXTURES AND HOT WATER HEATERS.
9. WATER HEATER FLUE GAS EXHAUST DUCT SHALL TERMINATE AT ROOF WITH "ACKIE" TYPE MVR VENT CAP, EXHAUST DUCT AND CAP SIZED TO SUIT. MAXIMUM HEIGHT FROM ROOF TO TOP OF CAP TO BE 24".