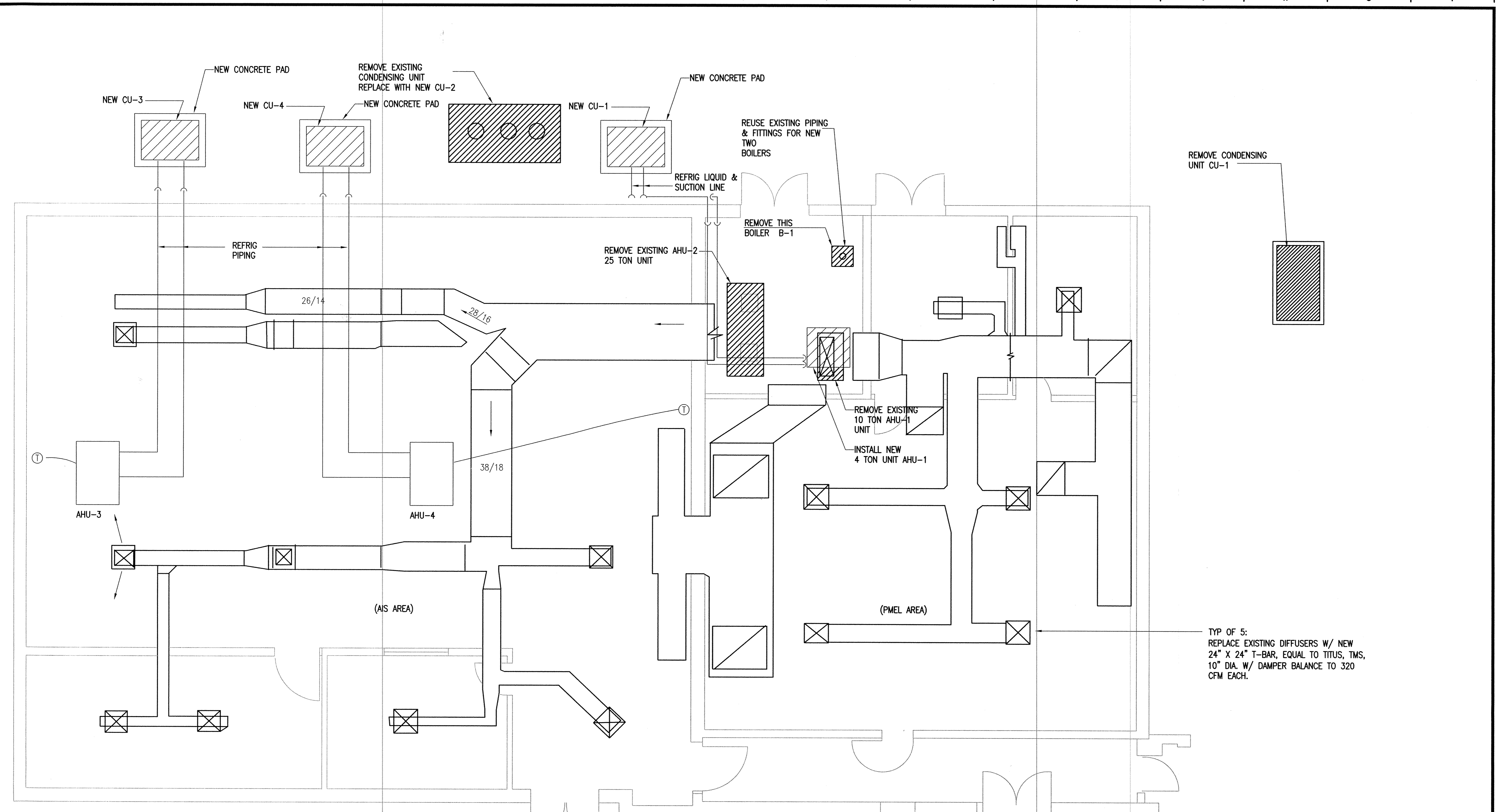


F:\00BLOCKS\ARCHITECTURAL\24X36 Saved: 05/10/2001 12:08 By: AEY DimScale: 1.00 (TM=0) DWG.2



PARTIAL FLOOR PLAN BUILDING 216

NO SCALE

BUILDING 216 - SCOPE OF WORK:

REMOVE THE FOLLOWING EQUIPMENT & DISPOSE OFF BASE:

- EXISTING 25 TON CONDENSING UNIT & 10 TON CONDENSING UNIT. RECAPTURE EXISTING REFRIGERANT PER EPA REGULATIONS.
- EXISTING BOILER & CIRCULATING PUMP.
- EXISTING 25 TON & 10 TON AIR HANDLING UNITS.
- EXISTING CEILING DIFFUSERS IN PEL AREA.

FURNISH & INSTALL THE FOLLOWING NEW EQUIPMENT:

- CU-1: CARRIER 38TSA NOMINAL 4 TON, SEER 13, R-410A. PROVIDE REFRIGERANT PIPING PER MANUFACTURER'S INSTRUCTIONS.
- CU-2: 25 TON AIR COOLED CONDENSING UNIT, CARRIER MODEL 38AK028, 208-3-60. REUSE EXISTING REFRIGERANT PIPING, VACUUM & PRESSURE TEST.
- PROVIDE NEW 25 TON & 4 TON AIR HANDLING UNIT & BLOWER COIL UNIT WITH FILTER SECTION, 2 ROW HOT WATER COIL, AND DIRECT EXPANSION COIL. PROVIDE NEW 3-WAY CONTROL VALVE FOR EACH COIL. 25 TON DIRECT EXPANSION COIL SHALL MATCH 3 STEPS IN CAPACITY OF CONDENSING UNIT W/ SEPARATE EXPANSION VALVE FOR EACH STEP.
- PROVIDE TWO EACH LIEBERT MINI-MATE CEILING MOUNTED 2 TON AIR HANDLING UNITS (AHU-3&4) WITH REMOTE LIEBERT AIR COOLED CONDENSERS (CU-3&4). PROVIDE AIR DISCHARGE PLENUM & ELECTRONIC THERMOSTAT. DRAIN CONDENSATE TO FLOOR DRAIN IN MECHANICAL ROOM, WITH MINI PUMP IF NEEDED. PROVIDE REFRIGERANT PIPING PER MANUFACTURER'S DIRECTIONS.
- REPLACE EXISTING BOILER WITH TWO EACH HYDRO-THERM MODEL AM-150, 150,000 BTUH INPUT, 132,000 BTUH OUTPUT, FULLY MODULATING. PROVIDE IN-LINE CIRCULATING PUMP FOR EACH BOILER, 10 GPM, 35 FT HEAD. INSTALL BOILERS PER MANUFACTURER'S DIRECTIONS. PROVIDE NEW 20 GALLON DIAPHRAGM EXPANSION TANK AND 5 GALLON POT FEEDER. INTEGRATE NEW EQUIPMENT WITH SIEMENS BASE CONTROL SYSTEM, EXCEPT FOR LIEBERT SYSTEMS WHICH SHALL BE INDEPENDENT. PROVIDE ENABLE FUNCTION FOR START-STOP, ALARM FUNCTION, AND STATUS FUNCTION. NORMAL OPERATION SHALL BE THRU MANUFACTURER'S UNIT CONTROL PANEL.

ELECTRICAL NOTES:

- CONTRACTOR SHALL FOLLOW MANUFACTURER'S INSTALLATION GUIDELINES AND REQUIREMENTS.
- ELECTRICAL INSTALLATION SHALL BE IN COMPLIANCE WITH THE LATEST REVISION OF NFPA-70 NATIONAL ELECTRICAL CODE.
- ALL EQUIPMENT AND INSTALLATION SHALL COMPLY WITH APPLICABLE LOCAL AND NATIONAL BUILDING CODES.
- CONTRACTOR SHALL UTILIZE EXISTING ELECTRICAL DISTRIBUTION PANELS AND SUPPLY CIRCUITS WHERE POSSIBLE.
- CONTRACTOR SHALL SUPPLY SEPARATE FEEDER CIRCUITS FOR EACH ELECTRICAL LOAD. FEEDER CIRCUITS SHALL BE SIZED PER THE EQUIPMENT MANUFACTURER'S RECOMMENDATIONS.

GENERAL NOTE:

- PROVIDE 6" THK CONCRETE PAD w/ 6x6 8/8 WWF FOR ALL NEW CONDENSING UNITS NOT LOCATED ON EXISTING CONCRETE PADS. SIZE PAD AS REQUIRED TO FIT INDIVIDUAL SIZES.

AIR NATIONAL GUARD/FORT SMITH, ARK.
 AVIONICS BUILDING 216
 PROJECT HKRZ012018

AVIONIC BUILDING 216 - AIR NATIONAL GUARD
 BENHAM GROUP #2402101009

The Benham Group
 117 Parkwood Street
 Lowell, Arkansas 72745
 (479) 770-5900

**Architects & Engineers
 Planners & Consultants**

DATE: 08/25/02
 SCALE: AS NOTED
 DESIGNED: XXX
 DRAWN: INITIALS
 APPROVED: X

| NO. | DATE | REVISIONS |
|-----|------|-----------|
| | | |
| | | |
| | | |
| | | |
| | | |
| | | |
| | | |
| | | |
| | | |
| | | |

M216