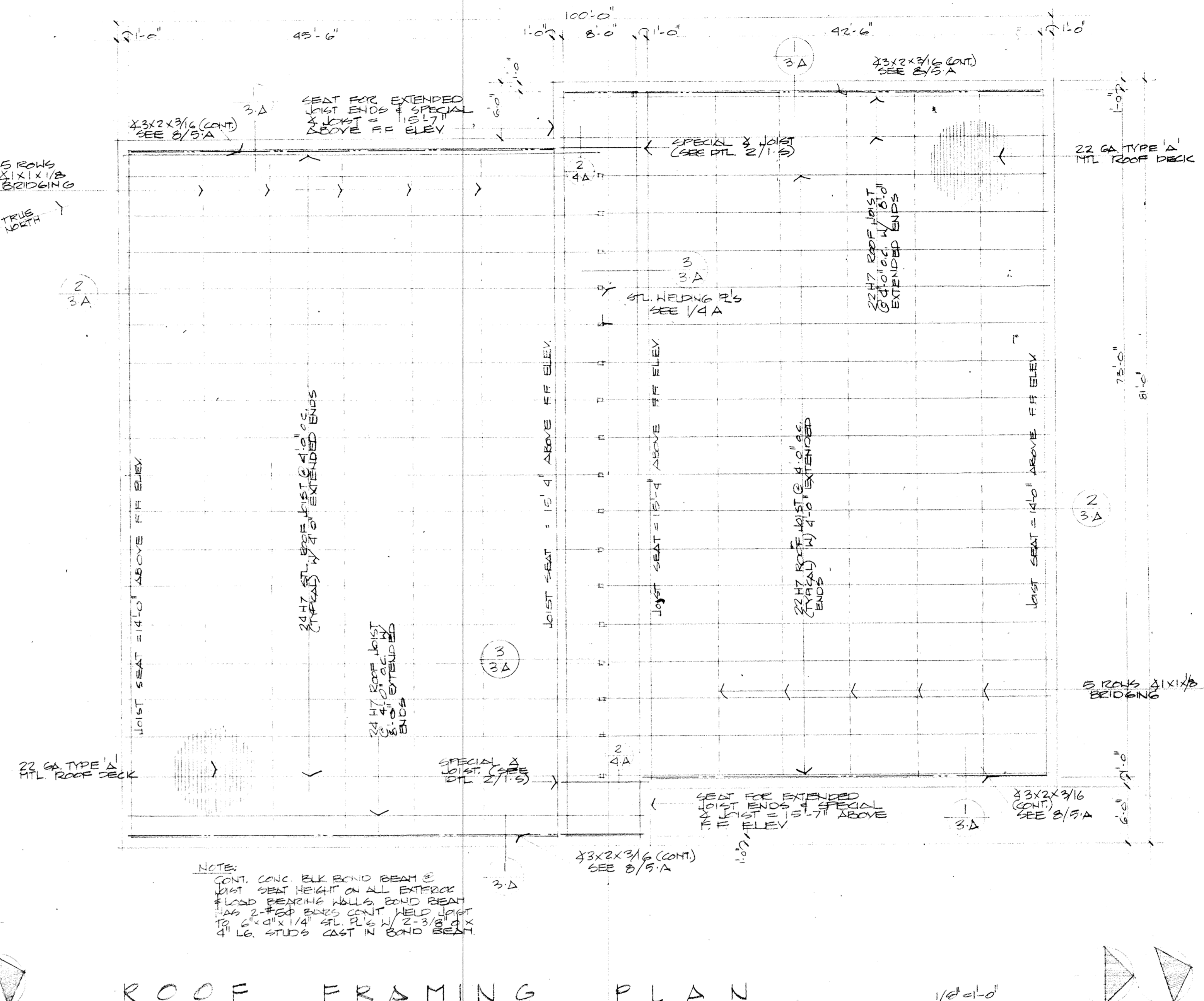
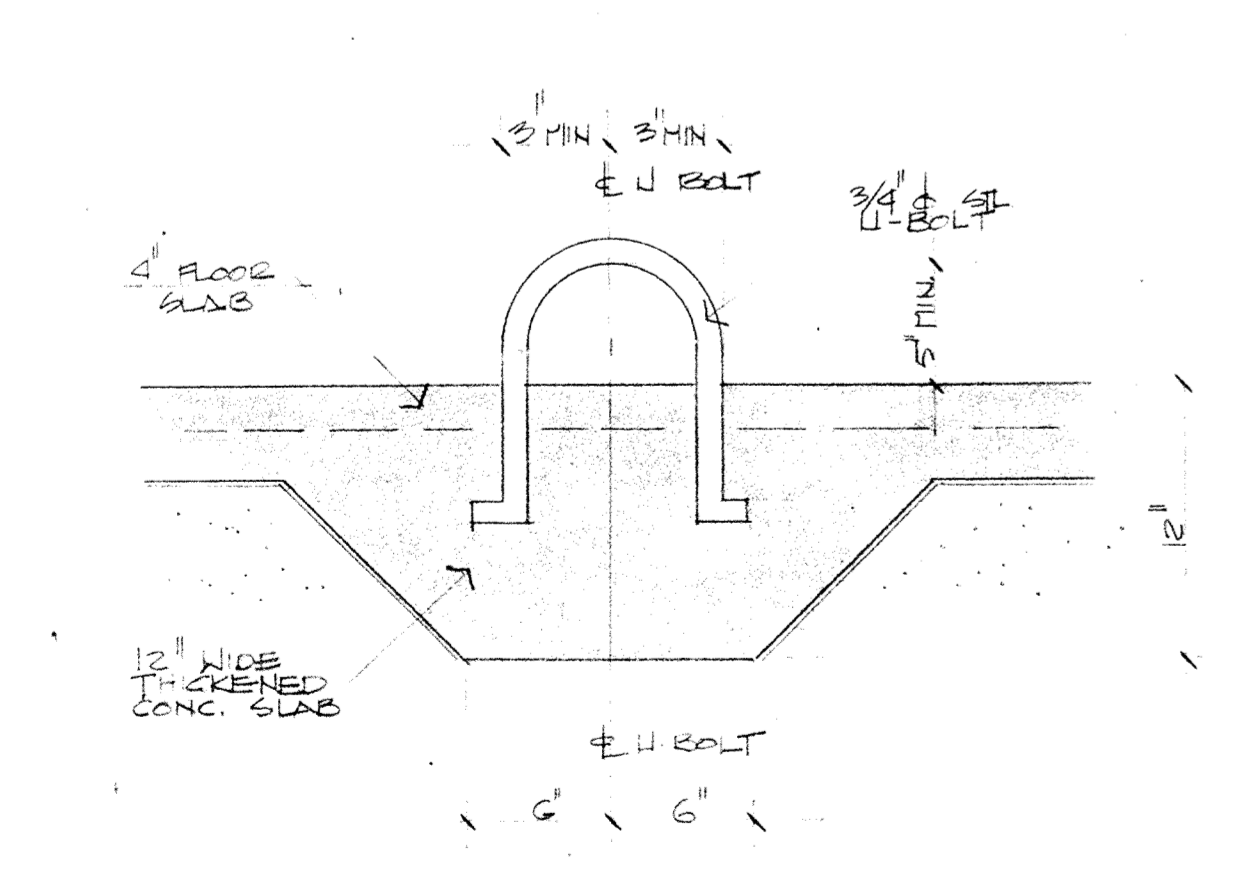


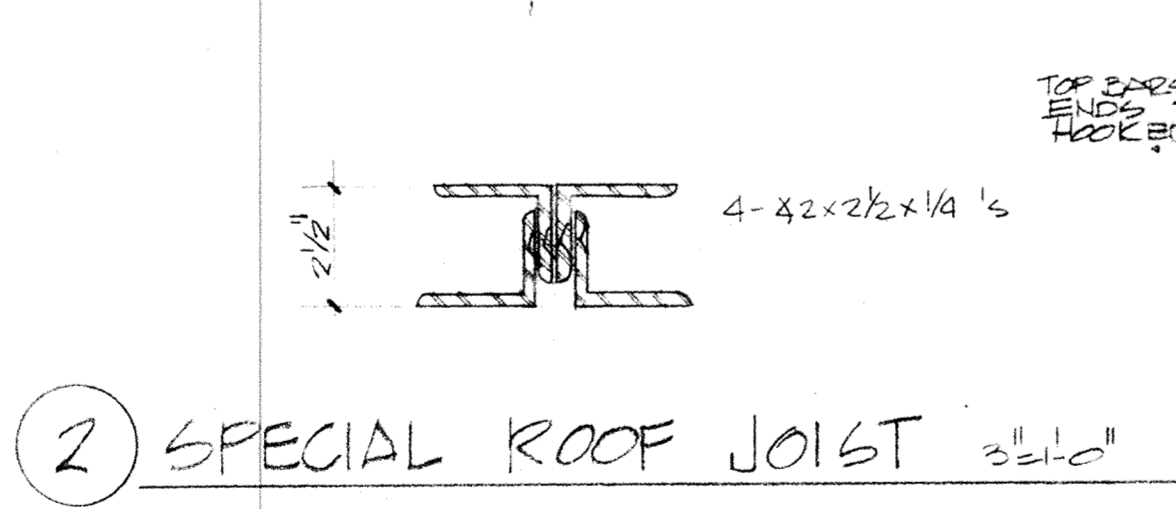
FOUNDATION PLAN



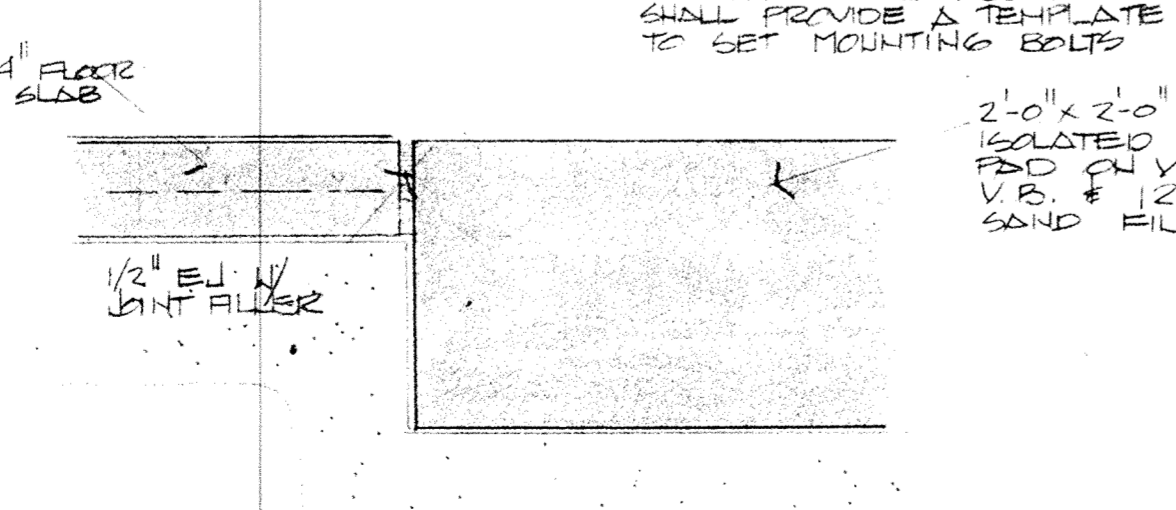
ROOF FRAMING PLAN



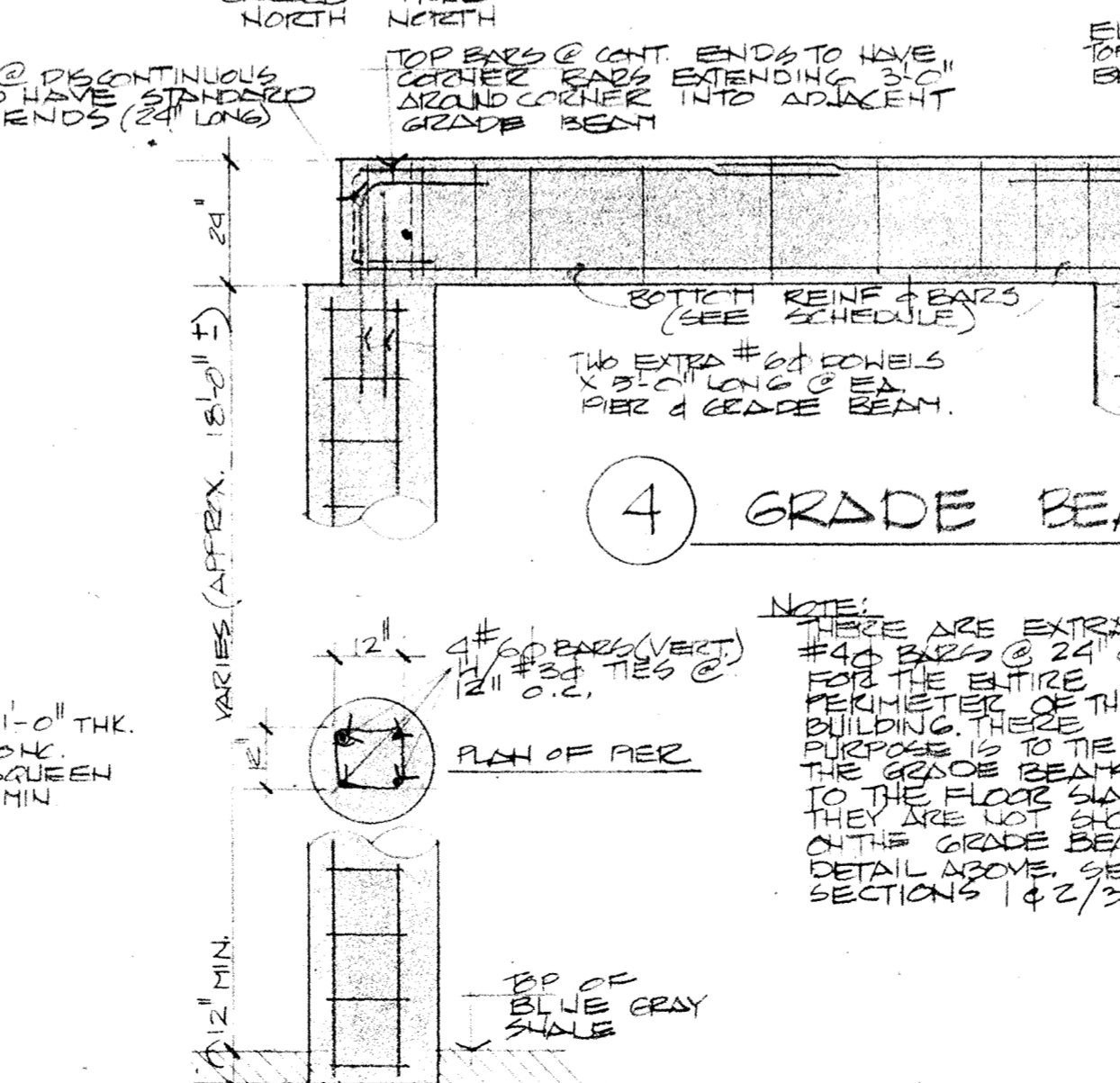
1 U-BOLT DETAIL 1/2"=1'-0"



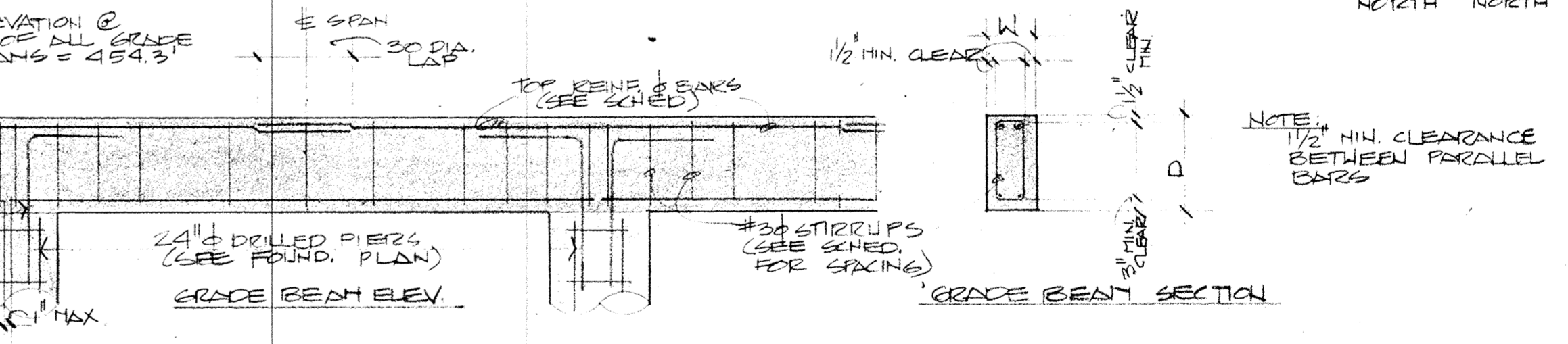
2 SPECIAL ROOF JOIST 3x2x3/16"



3 ISOLATED CONC PAD 1/2"=1'-0"



4 GRADE BEAM DETAILS 3/8"=1'-0"

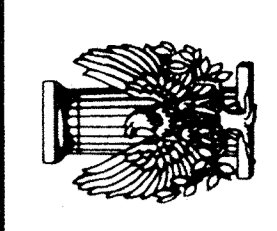


5 DRILLED PIER DETAILS 3/8"=1'-0"

MARK	SIZE	BOTTOM BARS	TOP BARS	STIRRUP SPACING	REMARKS
GB-1	2'x24"	2#7	2#6	FILL @ 24"oc	
GB-2		2#6	2#7		
GB-3		2#7	2#6		
GB-4		2#9	2#10	4@10", FILL @ 24"oc	
GB-5		2#9	2#10		
GB-6		2#7	2#6		
GB-7		2#9	2#10		
GB-8		2#6	2#7	2@5", 3@6", 3@8"	HAS HOOKED ENDS
GB-9		2#6	2#7	FILL @ 10"	
GB-10		2#6	2#7	4@10", FILL @ 24"	
GB-11		2#6	2#7		
GB-12		2#6	2#7		
GB-13		2#6	2#7		
GB-14		2#6	2#7	2@5", 3@6", 3@8"	HAS HOOKED ENDS
GB-15		2#6	2#7	FILL @ 10"	

GRADE BEAM SCHEDULE

* DENOTES - FROM ADJACENT SPAN



LKHG

AVONICS FACILITY

ARKANSAS AIR NATIONAL GUARD

FORT SMITH, ARKANSAS

LASER KNIGHT HATHAWAY & GUEST, P.A.

ARCHITECTS • ENGINEERS • HEALTH CARE PLANNERS
 800 FIRST NATIONAL BANK • FORT SMITH, ARKANSAS

REVISIONS	

FOUNDATION PLAN, ROOF FRAMING PLAN, DETAILS	JOB NUMBER 1966
	DATE 2.9.77
SHEET 1	CATEGORY 5