

HVAC EQUIPMENT SCHEDULE

A/C-1 PACKAGED, DIRECT EXPANSION, SPLIT-SYSTEM COOLING SYSTEM WITH INDIRECT, GAS-FIRED HEATING CONSISTING OF:

"YORK" VERTICAL EVAPORATOR/BLOWER SECTION, MODEL #EBV362, 30 TON NOMINAL COOLING, 12,000 CFM, 7-1/2 HP. @ 480V, 3Ø, 60 HZ. INCLUDE BOTTOM RETURN AIR/SUPPORT PLENUM. FULL ECONOMIZER CAPABILITY. PROVIDE CONTROL TO DELETE ECONOMIZER CYCLE WHEN BUILDING RELATIVE HUMIDITY IS 60% OR ABOVE.

"YORK" CONDENSING SECTION, MODEL #CA360, 30 TON NOMINAL COOLING, 480V, 3Ø, 60 HZ. "REZOR" MODEL X-200 HORIZONTAL, INDIRECT, GAS-FIRED DUCT HEATER, 4,000 CFM @ .26" P.D., 379 TR @ 160,000 BTUH OUTPUT.

A/C-2 PACKAGED, DIRECT EXPANSION, SPLIT-SYSTEM COOLING SYSTEM WITH INDIRECT, GAS-FIRED HEATING CONSISTING OF:

"YORK" TWO VERTICAL GAS-FIRED FURNACES, MODEL #UG105B4, 84,000 BTUH OUTPUT HEATING WITH 7-1/2 TON NOMINAL COOLING COIL SECTION. 3,000 CFM (TOTAL), (2) 1/2 HP. MOTORS @ 115V, 1Ø, 60 HZ. INCLUDE SHOP-BUILT, METAL, COMBINATION R/A AND SUPPORT PLENUM.

"YORK" CONDENSING SECTION, MODEL #CA91, 7-1/2 TON NOMINAL COOLING, 480V, 3Ø, HZ.

PE-1 "JUTONE" MODEL # QT-80 CEILING EXHAUST FAN, 80 CFM @ 0.10" S.P. 115V, 1Ø, 60 HZ. SWITCH WITH LIGHTS.

PE-2 "ACHE" MODEL #V-2 CEILING EXHAUST FAN, 230 CFM @ 0.10" S.P. (1.5 AMPS, 3-1/2 SONES) 115 V, 1 Ø, 60 HZ. PROVIDE SEPARATE WALL SWITCH.

PE-3 "ACHE" MODEL #10P3 ROOF EXHAUSTER 525 CFM @ 1/4" S.P. (6.0 SONES), 1/60 HP. @ 115V, 1Ø, 60 HZ. PROVIDE SEPARATE WALL SWITCH AND THERMOSTAT TO OPERATE FAN AT 60-100° F. PROVIDE ROOF CURB AND BACKDRAFT DAMPER.

PE-4 "ACHE" MODEL #V-3 CEILING EXHAUST FAN. 299 CFM @ 0.10" S.P. (2.1 AMPS, 4.6 SONES) 115V, 1Ø, 60 HZ. PROVIDE SEPARATE TWO-SPEED WALL SWITCH.

L-1 RUSKIN" MODEL L7 STORM-PROOF ALUMINUM, ADJUSTABLE LOUVER - 24" LONG X 18" HIGH. MOUNT BOTTOM OF LOUVER @ 1'-6"± AFF. PROVIDE INSECT SCREEN AND WING-NUT OPERATOR.

L-1A SAME AS L-1 EXCEPT PROVIDE REMOTE CHAIN PULL OPERATOR AND MOUNT TOP @ 10'-0"± AFF.

L-2 "RUSKIN" MODEL L5 STATIONARY ALUMINUM STORM-PROOF LOUVER WITH INSECT SCREEN. 12" X 12" NOMINAL SIZE. MOUNT BOTTOM @ 10'-0"± AFF.

PE-5 "ACHE" MODEL #P10E ROOF EXHAUSTER 930 CFM @ 1/4" STATIC PRESSURE (1/4 HP - 5 SONES) 115V, 1Ø, 60 HZ. PROVIDE THERMOSTAT TO OPERATE FAN @ 60-100° F. PROVIDE ROOF CURB AND BACKDRAFT DAMPER.

OUTSIDE AIR INTAKE HOOD (ECONOMIZER)

"GREENHECK" ALUMINUM "FABRA-HOOD" (INTAKE) 36" X 36" THROAT, 72" X 72" HOOD. INCLUDE BIRDSCREEN, ROOF CURB, ETC. INSTALL MOTORIZED ECONOMIZER DAMPERS IN 36" X 36" O/A DUCT AND 84" X 20" R/A DUCT, TO SUIT.

RELIEF HOOD (ECONOMIZER)

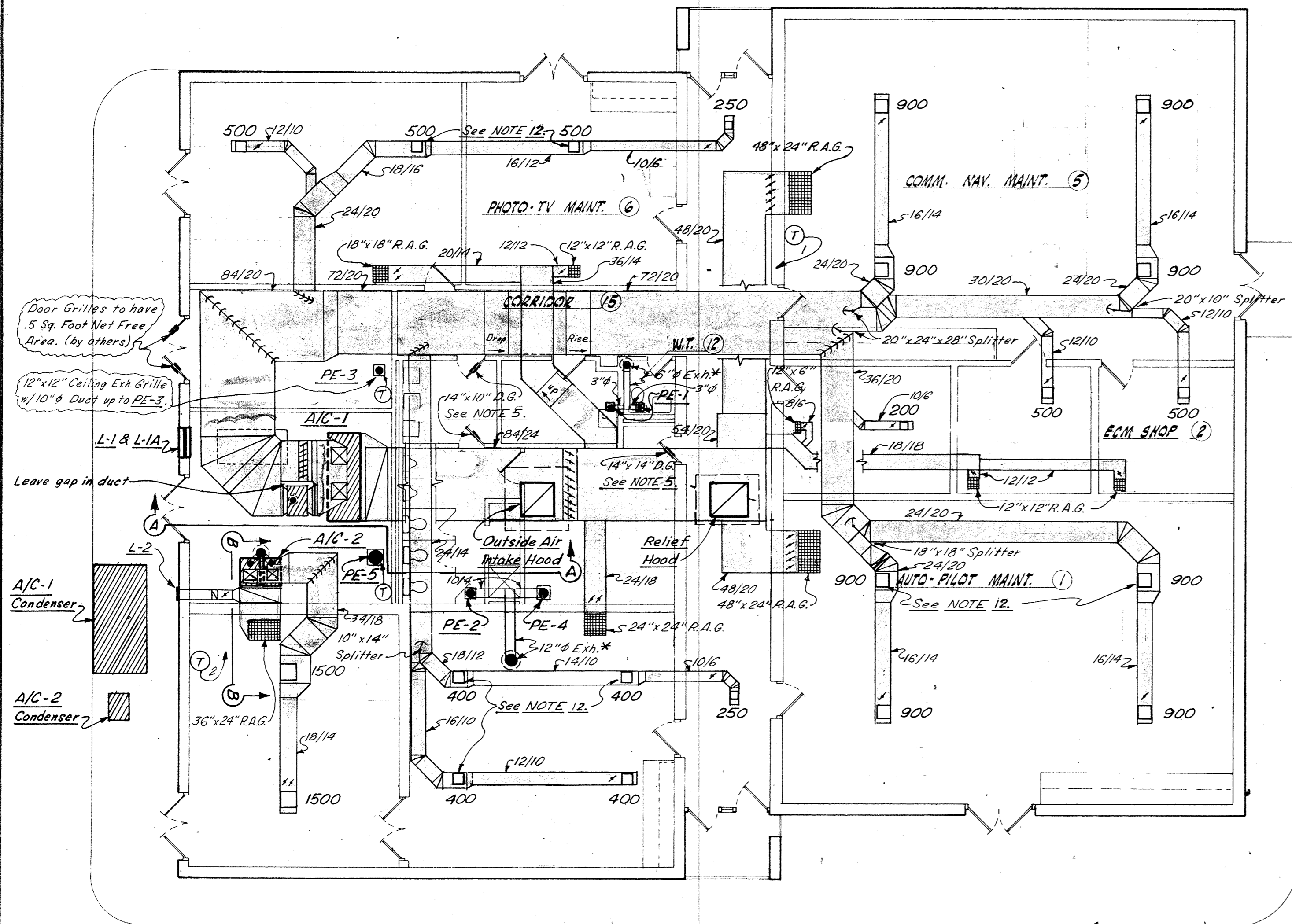
"GREENHECK" ALUMINUM "FABRA-HOOD" (RELIEF) 36" X 42" THROAT, 59" X 72" HOOD. INCLUDE BIRDSCREEN, ROOF CURB, ETC. INSTALL "KRUGER" MODEL #BRDF-H BAROMETRIC DAMPER (FOR HORIZONTAL, UPFLOW USE) 36" X 42" NOMINAL.

GENERAL H.V.A.C. NOTES

- REFER TO SPECIFICATIONS.
- CONTRACTOR WILL VERIFY CEILING SYSTEM TO BE INSTALLED AND FURNISH THE TYPE OF CEILING GRILLES AND DIFFUSERS, ETC. AS REQUIRED.
- ALL ROOF EXHAUST DUCTS WILL TERMINATE WITH "ACHE" TYPE MVR SCREENED ALUMINUM VENT CAPS, SIZED TO SUIT.
- MOUNT T-STATS @ 5'-0" ABOVE FINISHED FLOOR. PROVIDE APPROVED LOCKING COVERS.
- ALL DOOR GRILLES TO BE FURNISHED AND INSTALLED BY GENERAL CONTRACTOR. (SEE SPECIFICATIONS).
- THIS CONTRACTOR WILL BE RESPONSIBLE FOR VIBRATION AND SOUND CONTROL. PROVIDE APPROVED ISOLATORS, FLEXIBLE CONNECTORS, ETC. AS REQUIRED TO PROVIDE QUIET, VIBRATION FREE SYSTEMS.
- PROVIDE EASE OF ACCESS TO ALL EQUIPMENT AND CONTROLS, ETC. FOR ADJUSTMENT, REPAIR AND MAINTENANCE.
- SEE ARCHITECTURAL FOR REFLECTED CEILING PLAN TO COORDINATE DIFFUSER AND GRILLE LOCATIONS, ETC.
- DO NOT OPERATE ANY A/C UNITS FOR TEMPORARY HEATING, OR OTHERWISE, UNLESS APPROVAL OF ENGINEER IS OBTAINED IN WRITING.
- THIS CONTRACTOR WILL SUPPLY ALL MOTORS, STARTERS, CONTROLS, T-STATS, FAN SWITCHES, LOW VOLTAGE CONTROL WIRING, ETC. (SEE SPECIFICATION).
- ALL SUPPLY AIR, RETURN AIR, OUTSIDE AIR AND EXHAUST AIR BRANCH LINES WILL HAVE VOLUME CONTROL DEVICES FOR PROPER BALANCING. SEE SPECIFICATIONS.
- DROP SEPARATE BRANCH DUCT WITH VOLUME DAMPER OR USE ADJUSTABLE VOLUME CONTROL EXTRACTOR ("TITUS" MODEL AG-45) WHEREVER SPACE IS NOT AVAILABLE FOR INSTALLATION OF A REGULAR DAMPER. TYPICAL WHENEVER DUCT LEAVES BOTTOM, TOP, OR SIDE OF MAIN DUCT W/O SUFFICIENT SPACE FOR VOLUME DAMPER BEFORE TERMINAL DEVICE.
- DUCT SIZES INDICATE NET FREE AREAS.
- ALL DOORS WHICH DO NOT HAVE DOOR GRILLES BUT REQUIRE AIR PASSAGE SHALL BE UNDERCUT PER THE ARCHITECT'S INSTRUCTIONS.
- PROVIDE MINIMUM 4" THICK STEEL-REINFORCED (6/6/10" WELDED WIRE MESH) CONCRETE PADS TO MOUNT A/C CONDENSERS; SIZE TO SUIT UNIT DIMENSIONS, AND MANUFACTURER'S REQUIREMENTS. LOCATE CONDENSERS AS SHOWN.
- DELETED - DEC. 9, 1976.
- REFRIGERATION PIPING WILL BE SIZED IN ACCORDANCE WITH MANUFACTURER'S RECOMMENDATIONS AND ROUTED TO SUIT. SUCTION LINES TO BE INSULATED W/3/4" THICK "ARMAFLEX" INSULATION THROUGHOUT.

LEGEND

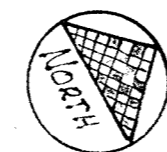
- S/A CEILING DIFFUSER
- R/A CEILING GRILLE
- O/A OR RELIEF (ROOF) HOOD
- POWER EXHAUSTER
- WALL MOUNTED THERMOSTAT



* See NOTE 3.

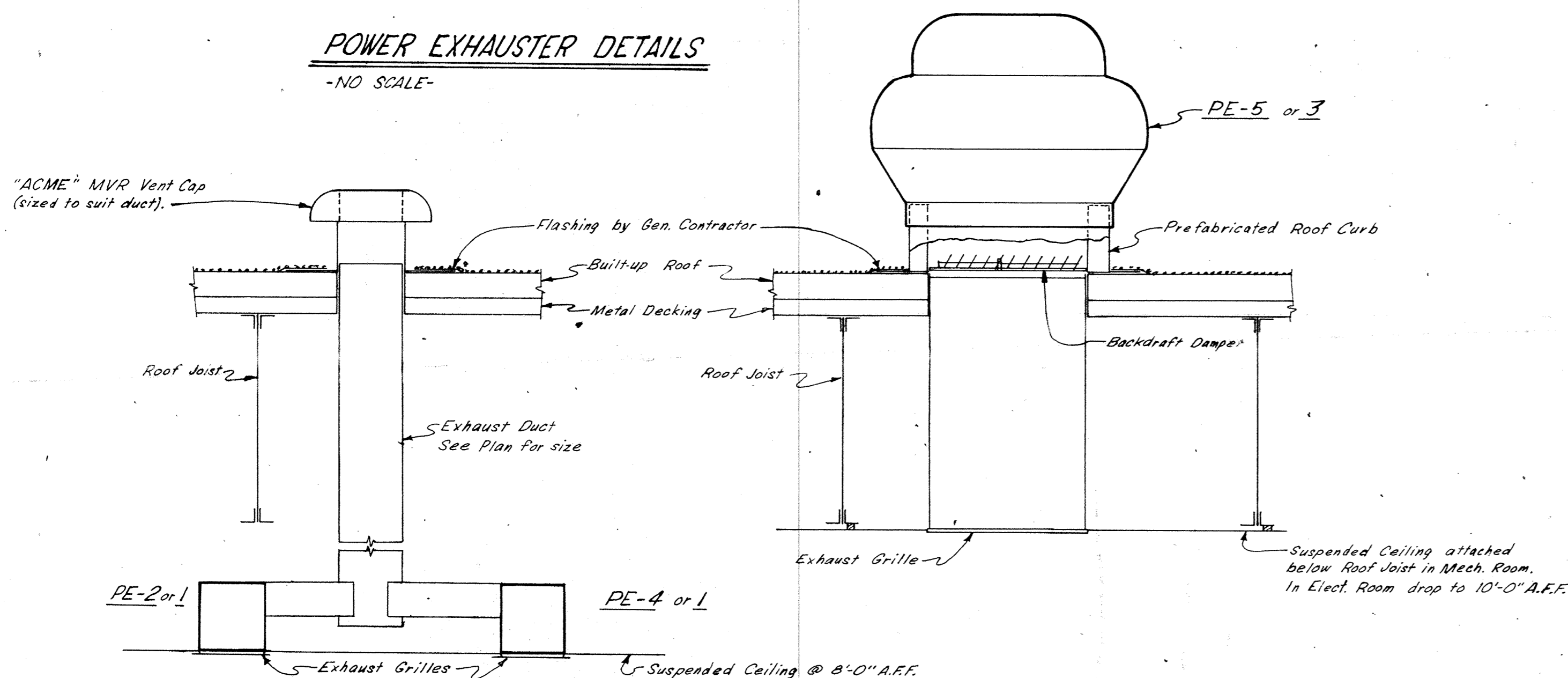
FLOOR PLAN

1/8" = 1'-0"



POWER EXHAUSTER DETAILS

-NO SCALE-



DIFFUSER SCHEDULE

SEE NOTE 2

SQUARE DIFFUSERS		
CFM	NOMINAL SIZE	DESCRIPTION
200 - 250	9 x 9	"TITUS" MODEL TPC, STEEL TYPE 3, "MODU-FRAME" CEILING DIFFUSER, BAKED OFF-WHITE ENAMEL FINISH, (24 X 24 MODULE) AG-95 DAMPER
400 - 500	12 x 12	SAME AS ABOVE
900	15 x 15	SAME AS ABOVE
1500	18 x 18	SAME AS ABOVE

RETURN AIR GRILLE SCHEDULE

SEE NOTE 2

NOMINAL SIZE	DESCRIPTION
AS SHOWN ON PLAN	"TITUS" MODEL #8-MR MODULAR RETURN GRILLES WITH STEEL PERFORATED PLATE MOUNTED IN AN EXTRUDED ALUMINUM FRAME. BAKED OFF-WHITE ENAMEL FINISH (#25-W-1)