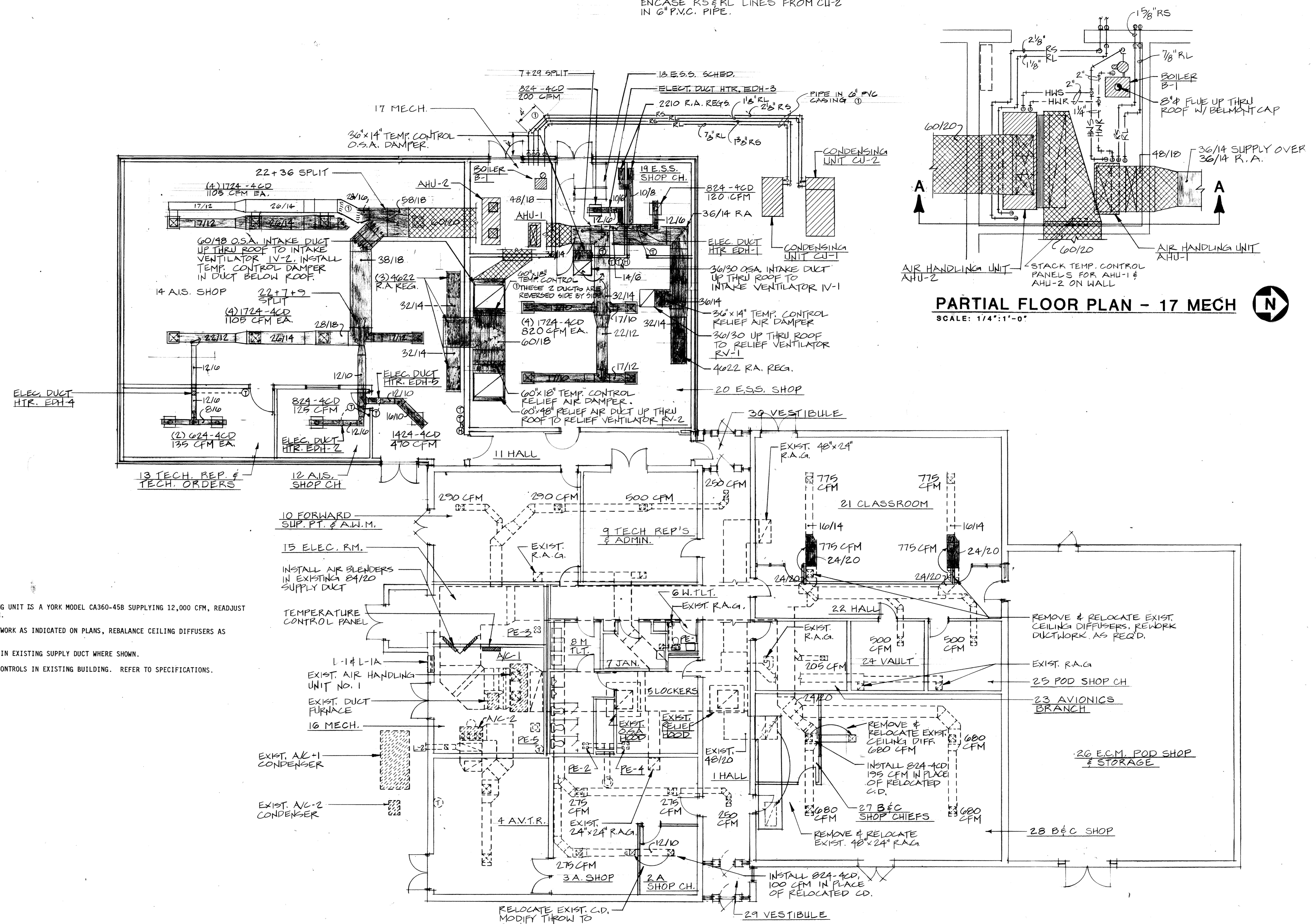


NOTE: ENCASE RS & RL LINES FROM CU-1 IN 6" P.V.C. PIPE.
 ENCASE RS & RL LINES FROM CU-2 IN 6" P.V.C. PIPE.

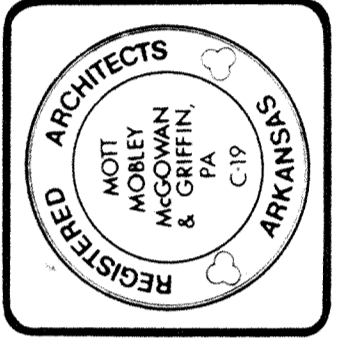
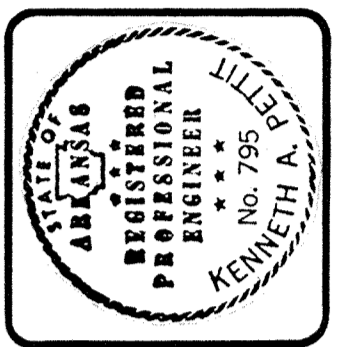


PARTIAL FLOOR PLAN - 17 MECH
 SCALE: 1/4" = 1'-0"

- NOTES**
- EXISTING AIR HANDLING UNIT IS A YORK MODEL CA360-45B SUPPLYING 12,000 CFM, READJUST TO SUPPLY 10,000 CFM.
 - REWORK EXISTING DUCTWORK AS INDICATED ON PLANS, REBALANCE CEILING DIFFUSERS AS SHOWN.
 - INSTALL AIR BLENDER IN EXISTING SUPPLY DUCT WHERE SHOWN.
 - REWORK TEMPERATURE CONTROLS IN EXISTING BUILDING. REFER TO SPECIFICATIONS.

FLOOR PLAN - HVAC
 SCALE: 1/8" = 1'-0"

MM MG
 Mott Mobley McGowan & Griffin, P.A.: Architects
 Fort Smith, Arkansas 72901
 302 North Sixth Street



CONTRACT NO. DAH403-87-C-7-0007
 PROJECT NO. FSM-40997
ADD/ALTER AVIONICS/ECM POD SHOP/STORAGE
 AIR NATIONAL GUARD TRAINING FACILITY
 MUNICIPAL AIRPORT - FT. SMITH, ARKANSAS

FLOOR PLAN - HVAC

As-built info:
 4-12-90
 Revisions:
1357
 Plan Number
11-16-88
 Date
M2.1
 Or