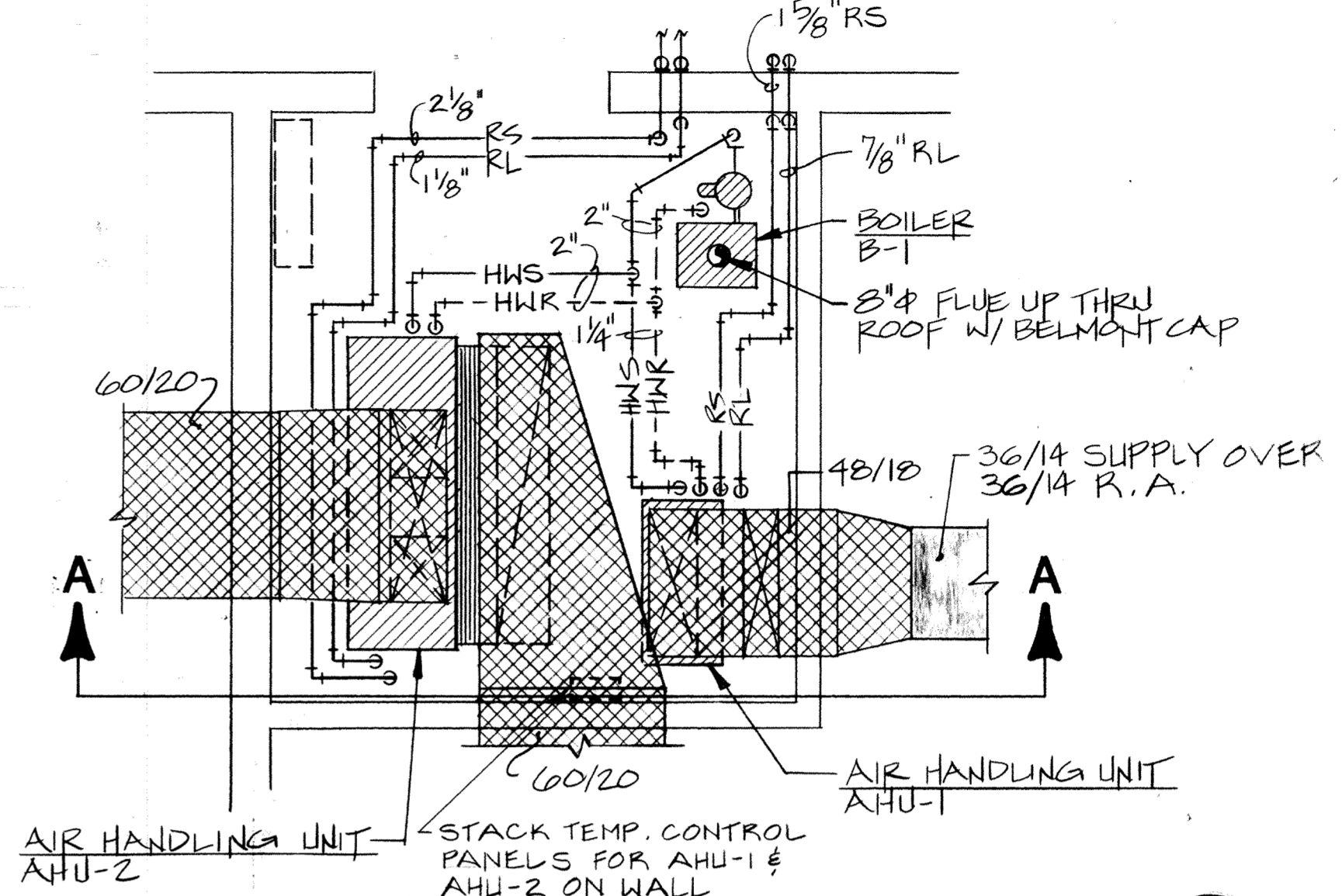
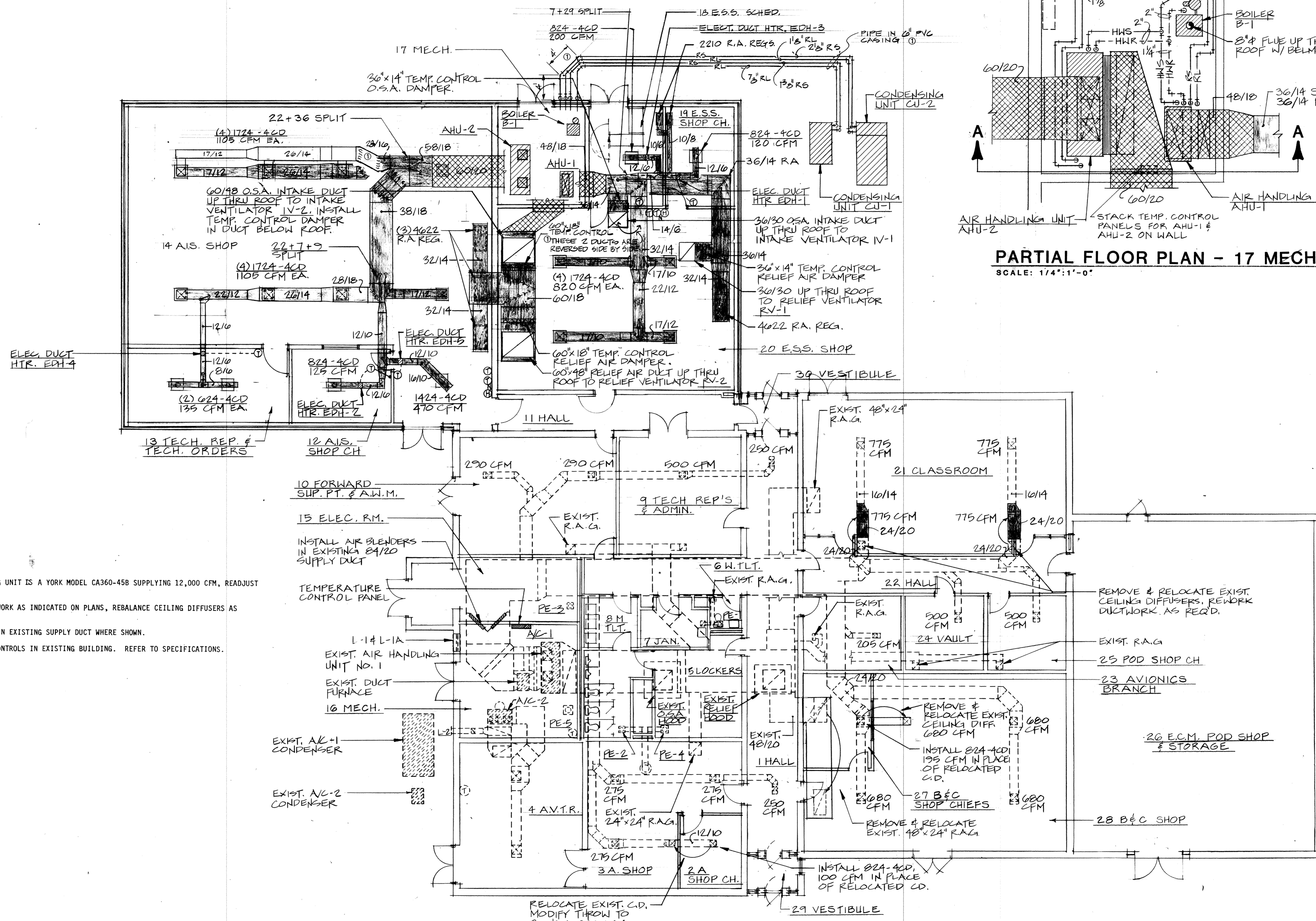


NOTE: ENCASE RS & RL LINES FROM CU-1
IN 6" P.V.C. PIPE.
ENCASE RS & RL LINES FROM CU-2
IN 6" P.V.C. PIPE.

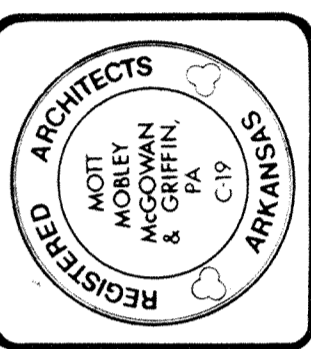


PARTIAL FLOOR PLAN - 17 MECH
SCALE: 1/4" = 1'-0"

- NOTES
- EXISTING AIR HANDLING UNIT IS A YORK MODEL CA360-45B SUPPLYING 12,000 CFM, READJUST TO SUPPLY 10,000 CFM.
 - REWORK EXISTING DUCTWORK AS INDICATED ON PLANS, REBALANCE CEILING DIFFUSERS AS SHOWN.
 - INSTALL AIR BLENDER IN EXISTING SUPPLY DUCT WHERE SHOWN.
 - REWORK TEMPERATURE CONTROLS IN EXISTING BUILDING. REFER TO SPECIFICATIONS.

FLOOR PLAN - HVAC
SCALE: 1/8" = 1'-0"

MM
MG
Mott Mobley McGowan & Griffin, P.A.: Architects
302 North Sixth Street
Fort Smith, Arkansas 72901



CONTRACT NO. DAH403 - 87 - C - 0007
PROJECT NO. FSM-40997
ADD./ALTER AVONICS/ECM POD SHOP/STORAGE
AIR NATIONAL GUARD TRAINING FACILITY
MUNICIPAL AIRPORT - FT. SMITH, ARKANSAS

FLOOR PLAN - HVAC

As-built info: 4-12-90 ①	M2.1
Revisions	
1357 Plan Number	Date
11-16-88	