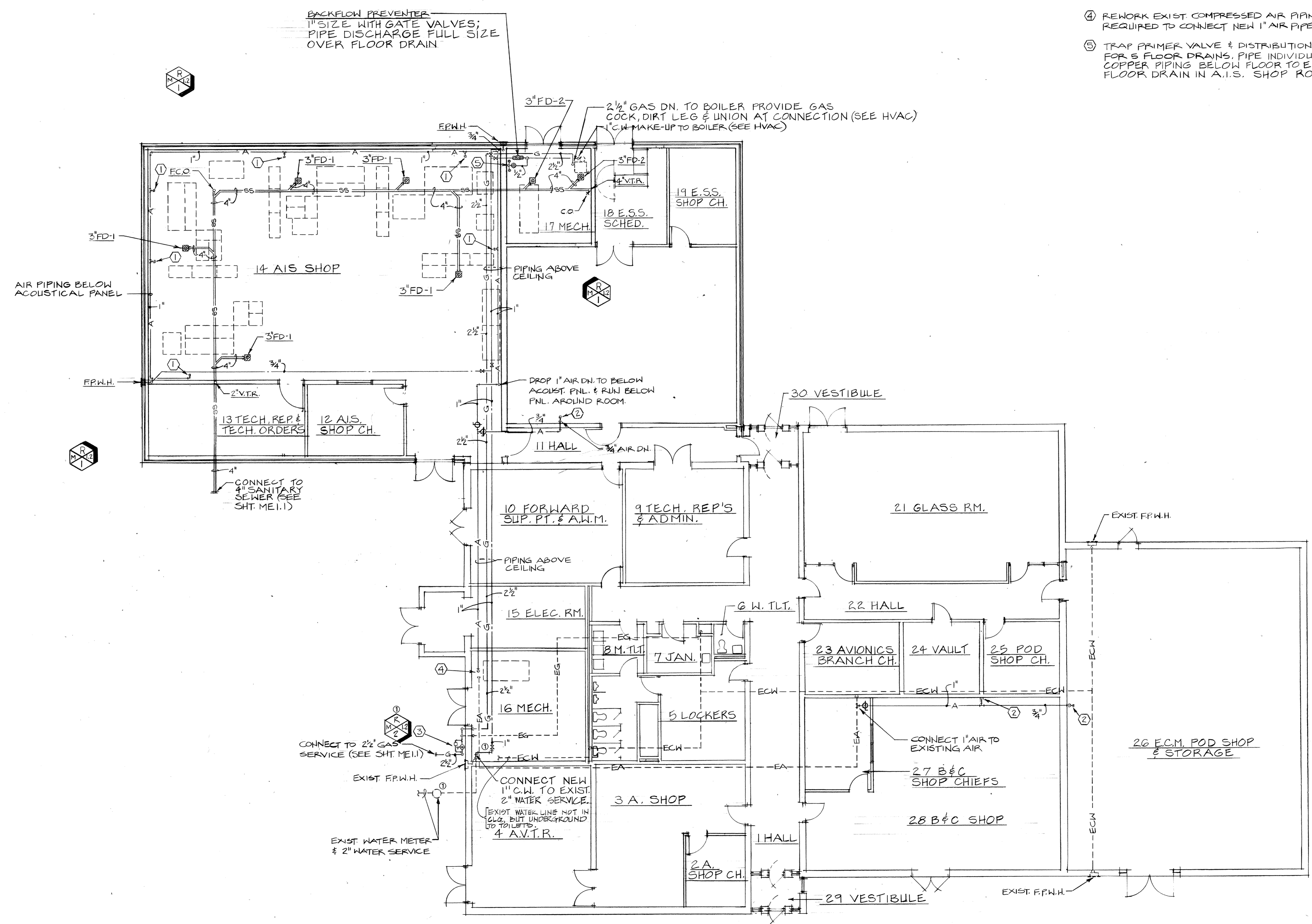


KEYED NOTES

- ① PROVIDE 3/4" CAPPED ISOLATION VALVE
- ② CAP 3/4" AIR PIPE @ 40" A.F.F.
- ③ PROVIDE GAS PRESSURE REGULATING VALVE WITH BY-PASS. RE-CONNECT EXIST. GAS TO OUTLET SIDE. PROVIDE ISOLATION COCKS
- ④ REWORK EXIST. COMPRESSED AIR PIPING AS REQUIRED TO CONNECT NEW 1" AIR PIPE.
- ⑤ TRAP PRIMER VALVE & DISTRIBUTION UNITS FOR 5 FLOOR DRAINS. PIPE INDIVIDUAL 1/2" COPPER PIPING BELOW FLOOR TO EACH FLOOR DRAIN IN A.I.S. SHOP ROOM 14.



BACKFLOW PREVENTER
1" SIZE WITH GATE VALVES;
PIPE DISCHARGE FULL SIZE
OVER FLOOR DRAIN

2 1/2" GAS DN. TO BOILER PROVIDE GAS
COCK, DIRT LEG & UNION AT CONNECTION (SEE HVAC)
1" C.W. MAKE-UP TO BOILER (SEE HVAC)

DROP 1" AIR DN. TO BELOW
ACOUST. PNL. & RUN BELOW
PNL. AROUND ROOM.

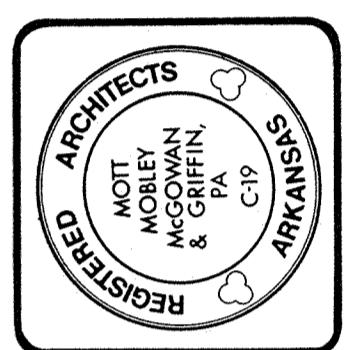
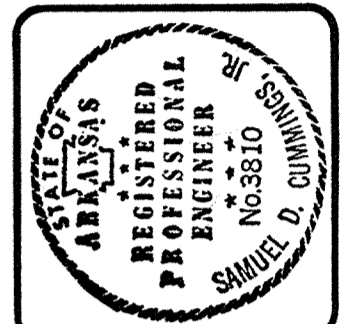
CONNECT NEW
1" C.W. TO EXIST.
2" WATER SERVICE.
EXIST. WATER LINE NOT IN
CLG. BUT UNDERGROUND
TO TOILETS.

CONNECT 1" AIR TO
EXISTING AIR

FLOOR PLAN - PLUMBING
SCALE 1/8" = 1'-0"



**MM
MG**
Mott Mobley McGowan & Griffin, P.A.: Architects
302 North Sixth Street
Fort Smith, Arkansas 72901



CONTRACT NO. DAHA03-87-C-0007
PROJECT NO. FSM-40997
ADD./ALTER AVIONICS/ECM POD SHOP/STORAGE
AIR NATIONAL GUARD TRAINING FACILITY
MUNICIPAL AIRPORT - FT. SMITH, ARKANSAS

FLOOR PLAN -
PLUMBING

As-built info: 4-12-90 ①	1357	M1.1
Revisions		
Plan Number	11-16-88	Date
		Or 28