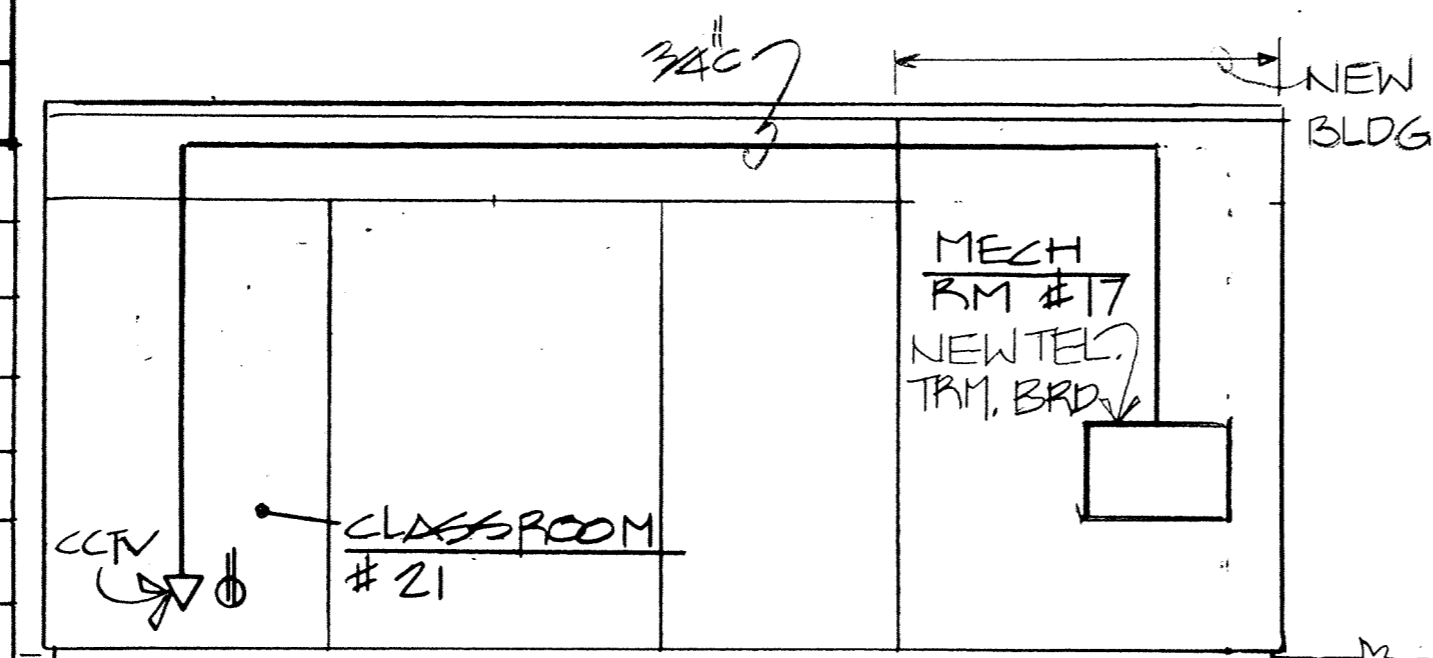


LEGEND	
MARK	DESCRIPTION
	FLUORESCENT LIGHTING OUTLET - CLG. MOUNTED
	FLUORESCENT LIGHTING OUTLET - WALL MOUNTED
	INCANDESCENT LIGHTING OUTLET - CLG. MOUNTED
	INCANDESCENT OR H.I.D. LIGHTING OUTLET - WALL MOUNTED
	EMERGENCY LIGHTING OUTLET
	SINGLE POLE SWITCH
	TWO POLE SWITCH
	THREE POLE SWITCH
	MULTI-LEVEL SWITCHING: Sa - SWITCHES 2 OUTBOARD LAMPS Sb - SWITCHES 2 INBOARD LAMPS
	THREE WAY MULTI-LEVEL SWITCHING
	DIMMER CONTROL SWITCH
	MANUAL MOTOR STARTER WITH OVERLOADS
	DUPLEX RECEPTACLE
	DUPLEX RECEPTACLE - ABOVE COUNTER HEIGHT INDICATED - VERIFY MOUNTING HEIGHT WITH ARCHITECT DRAWINGS
	DUPLEX RECEPTACLE - GROUND FAULT INTERRUPTING, ISOLATING GROUND & WEATHERPROOF TYPES INDICATED
	CLOCK OUTLET MOUNTED 7'-6" AFF
	BRANCH CIRCUIT IN CONDUIT - SWITCH LEG, HOT LEG, NEUTRAL, EQUIPMENT GROUND AND ISOLATED GROUND INDICATED
	BRANCH CIRCUIT HOMERUN - PANEL AND CIRCUIT NUMBER INDICATED
	CONDUIT CONCEALED IN OR BELOW FLOOR SLAB
	FLEXIBLE CONDUIT
	GROUNDING MODULE
	SURFACE MOUNTED CLOSED CIRCUIT T.V. OUTLET
	50A TWISTLOCK NEMA 14-50 RECEPTACLE/400 HZ
	20A TWISTLOCK NEMA 5-20 RECEPTACLE/400 HZ
	30A TWISTLOCK NEMA 14-30 RECEPTACLE/60 HZ
	20A TWISTLOCK NEMA 14-20 RECEPTACLE/60HZ
	15A NEMA 2-20 RECEPTACLE 28 VOLT DC
	20A TWISTLOCK NEMA 14-20 RECEPTACLE/400 HZ
	20A TWISTLOCK NEMA 10-20 RECEPTACLE/60HZ
	CABLE T.V. OUTLET
	SHUNT TRIP C.B.

	JUNCTION BOX
	SAFETY DISCONNECT SWITCH - SIZE NOTED ON PLAN
	COMBINATION MOTOR STARTER AND DISCONNECT SWITCH
	MOTOR STARTER
	TRANSFORMER
	SURFACE MOUNTED PANELBOARD
	FLUSH MOUNTED PANELBOARD
	TELEPHONE OUTLET
	TELEPHONE OUTLET - WALL MOUNTED TELEPHONE INDICATED
	TELEPHONE OUTLET - ABOVE COUNTER HEIGHT INDICATED - VERIFY MOUNTING HEIGHT WITH ARCHITECT DRAWINGS
	TELEPHONE TERMINAL BOARD
	PANIC BUTTON
	TELEPHONE OUTLET - FLUSH MOUNTED TYPE IN FLOOR SLAB
	FIRE ALARM SOUNDING DEVICE
	FIRE ALARM PULL STATION
	DUCT SMOKE DETECTOR
	HEAT DETECTOR
	COMBINATION SMOKE DETECTOR/HEAT DETECTOR
	EXISTING LIGHTING OUTLET
	INDICATES SURFACE MOUNTED DEVICE - SEE PLANE FOR REQUIRED DEVICE

ALL DASHED SYMBOLS SHALL INDICATE EXISTING



CCTV RISER DIAGRAM

NTS

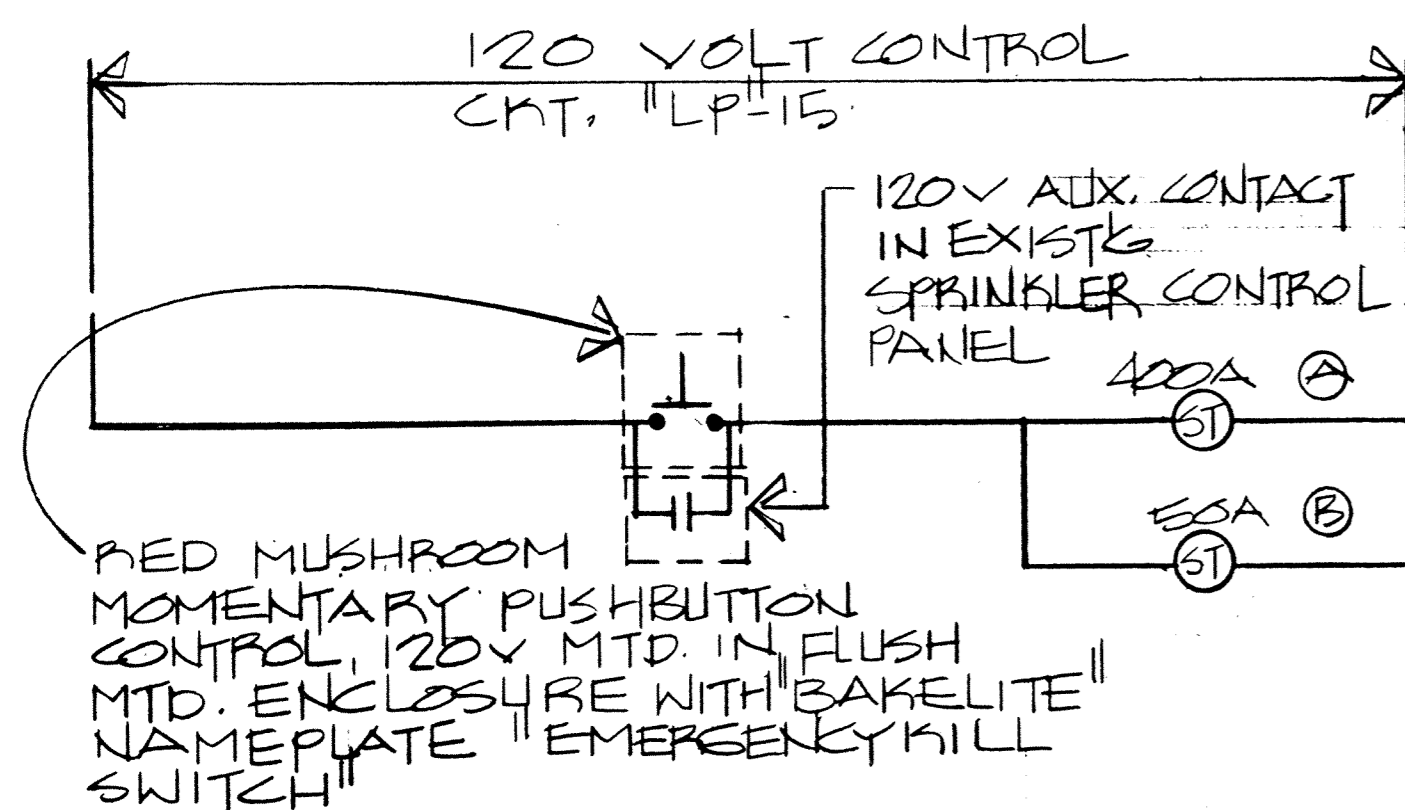
PANEL "D1" - 28VDC WIRE 100 AMPERE MAIN CB: 100 AMPERE BUS 120V SHUNT TRIP

LOCATION 19 ESS SHOP CH. MOUNTING FLUSH 10KALC

LINE A	LINE B	LOAD DESCRIPTION	OUTLETS		CIRCUIT BREAKER		BUS		CIRCUIT BREAKER		OUTLETS		LOAD DESCRIPTION	LINE A	LINE B
			REC	LITES	POLES	TRIP	A	B	TRIP	POLES	LITES	REC			
1	350	20 ESS SHOP	✓		20		20		20		✓	20 ESS SHOP		350	2
3	350	20 ESS SHOP	✓		20		20		20		✓	20 ESS SHOP	350		4
5	350	20 ESS SHOP	✓		20		20		20		✓	20 ESS SHOP	350	350	6
7	350	20 ESS SHOP	✓		20		20		20		✓	20 ESS SHOP	350		8
9		SPARE			20		20		20			SPARE			10
11		SPARE			20		20		20			SPARE			12
13		SPARE			20		20		20			SPARE			14
15		SPARE			20		20		20			SPARE			16
17		SPACE ONLY										SPACE ONLY			18
19															20
21															22
23															24
25															26
27															28
29															30
31															32
33															34
35															36
37															38
39															40
41															42
700 700			SUB TOTALS										700 700		

NOTES: 100A FEEDER
V_D = 1.9%

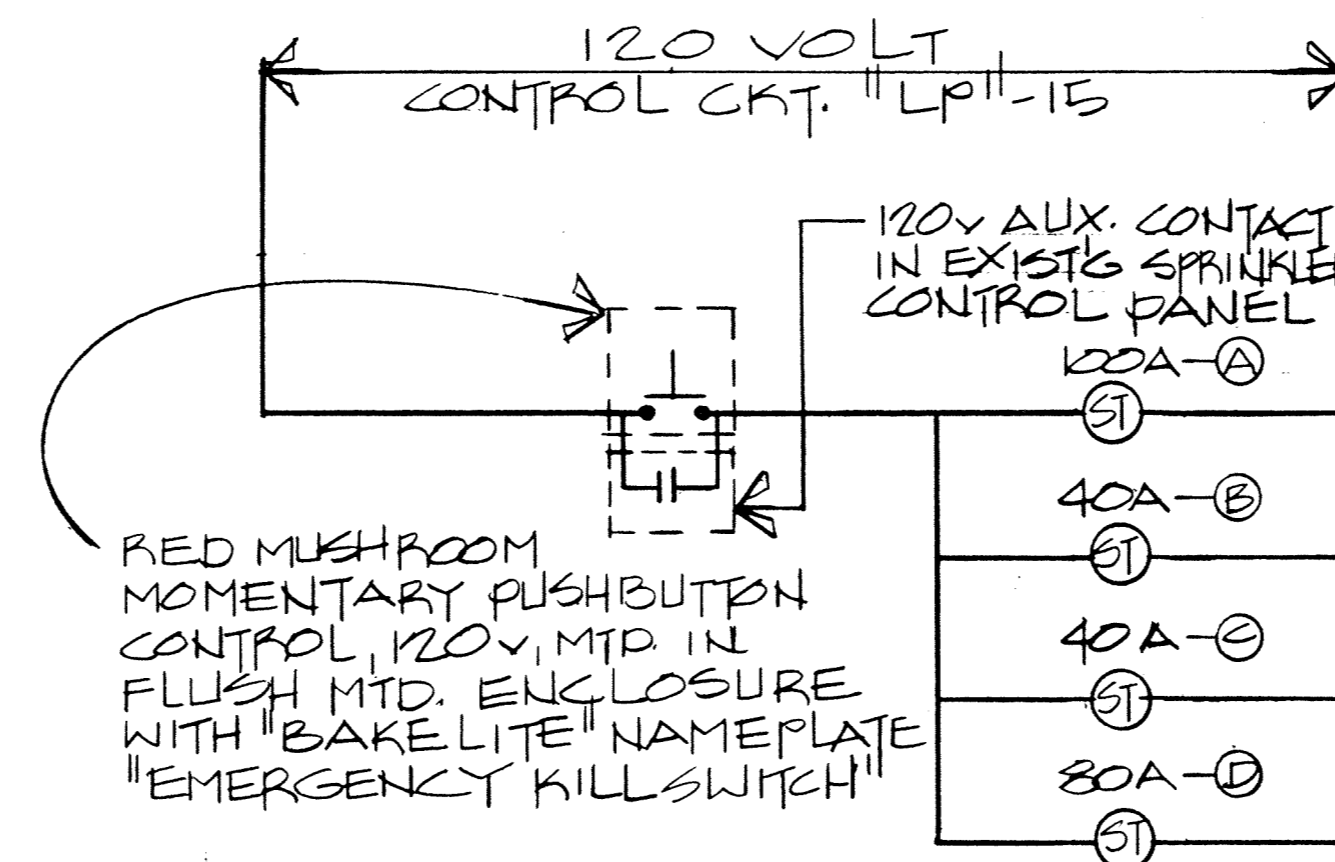
LINE TOTALS: 1,400 1,400
TOTAL VA: 1,400 1,400
LINE AMPS: 50 50
TOTAL KVA LOAD: 12.0



A.I.S. SHOP PANIC BUTTON CONTROL WIRING DIAGRAM

NTS

- Ⓐ 400A/3P, 208V, 60HZ 120V OPERATED SHUNT TRIP CKT. BKR. IN PANEL "LPD"
- Ⓑ 50A/3P, 200V, 400HZ 120V OPERATED SHUNT TRIP CKT BKR. IN PANEL "E1"



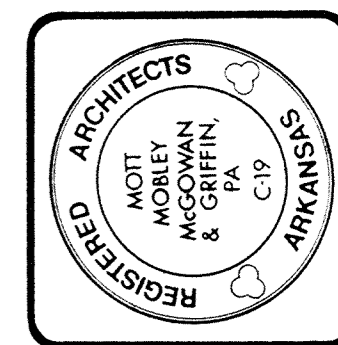
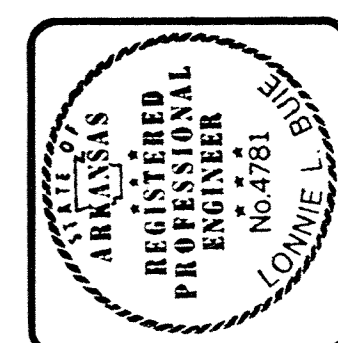
E.S.S. SHOP PANIC BUTTON CONTROL WIRING DIAGRAM

NTS

- Ⓐ 100A/2P, 28V DC, 120V OPERATED SHUNT TRIP MAIN CKT. BKR. IN PANEL "D1"
- Ⓑ 40A/2P, 240V, 120V OPERATED SHUNT TRIP MAIN CKT. BKR. IN PANEL "F1"
- Ⓒ 40A/3P, 208V, 400HZ 120V OPERATED SHUNT TRIP MAIN CKT. BKR. IN PANEL "E2"
- Ⓓ 30A/3P, 208V, 60HZ 120V OPERATED SHUNT TRIP MAIN CKT. BKR. IN PANEL "LP1"

MM MG

Mott Mobley McGowan & Griffin, P.A.: Architects
302 North Sixth Street
Fort Smith, Arkansas 72901



CONTRACT NO. DAH403 - 87 - C - 0007

PROJECT NO. FSM-40997

ADD./ALTER AVONICS/ECM POD SHOP/STORAGE
AIR NATIONAL GUARD TRAINING FACILITY
MUNICIPAL AIRPORT - FT. SMITH, ARKANSAS

LEGEND SCHEDULE

Revisions
1357
Plan Number
11-16-88
Date
E 1.5