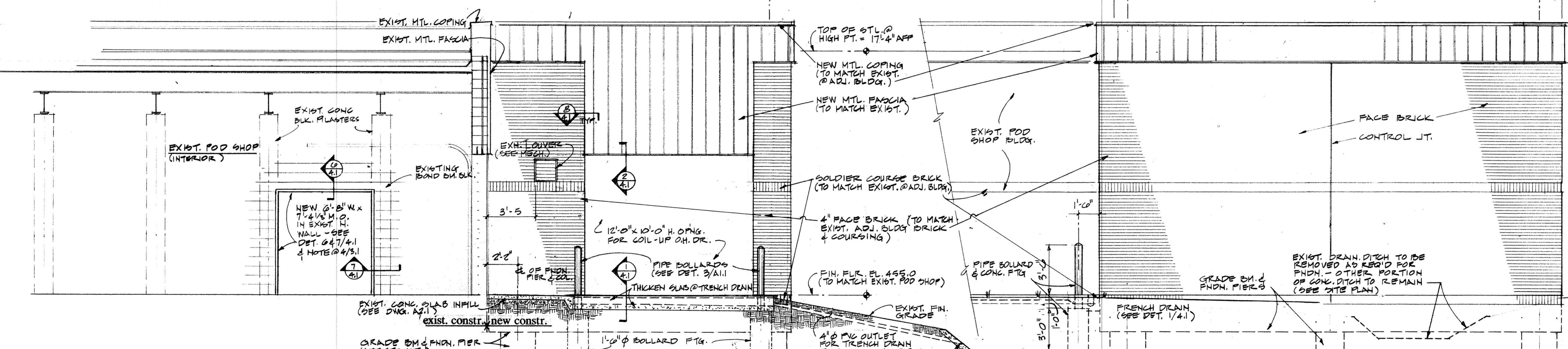


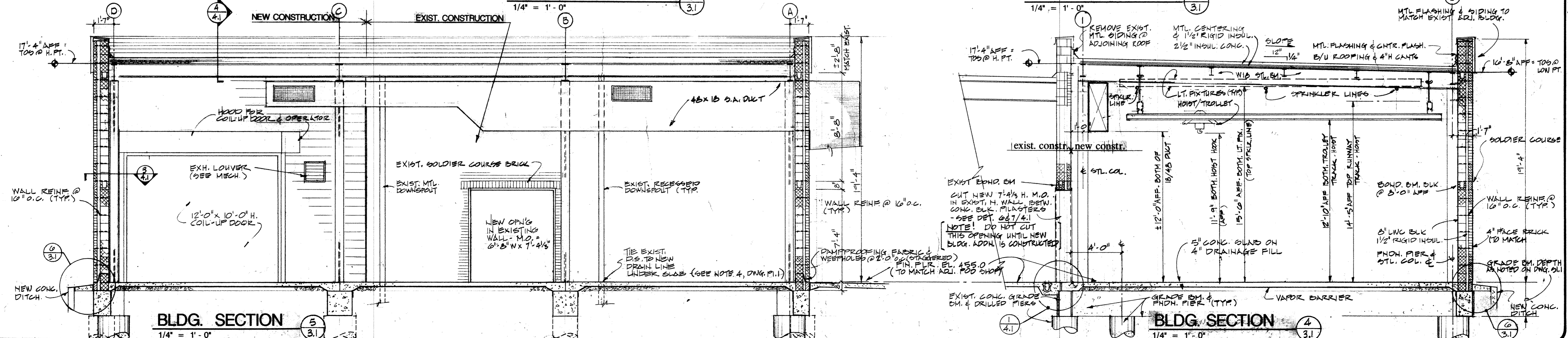
NORTH ELEVATION
1/4" = 1'-0"

WEST ELEVATION (SIMILAR)
1/4" = 1'-0"



SOUTH ELEVATION
1/4" = 1'-0"

EAST ELEVATION
1/4" = 1'-0"



BLDG. SECTION
1/4" = 1'-0"

BLDG. SECTION
1/4" = 1'-0"

