

CONC. SPLASH BLOCK
NO SCALE

MATERIALS LEGEND

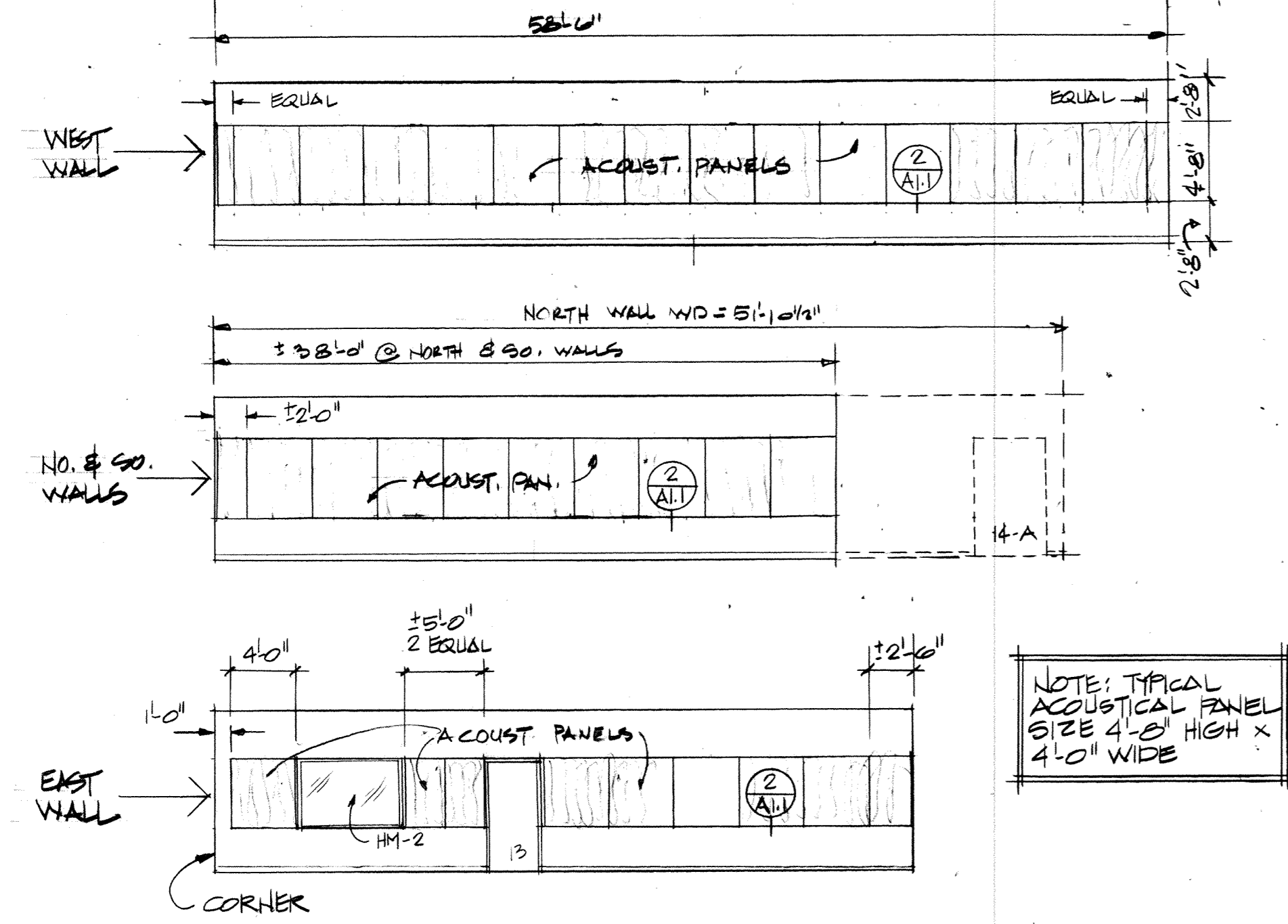
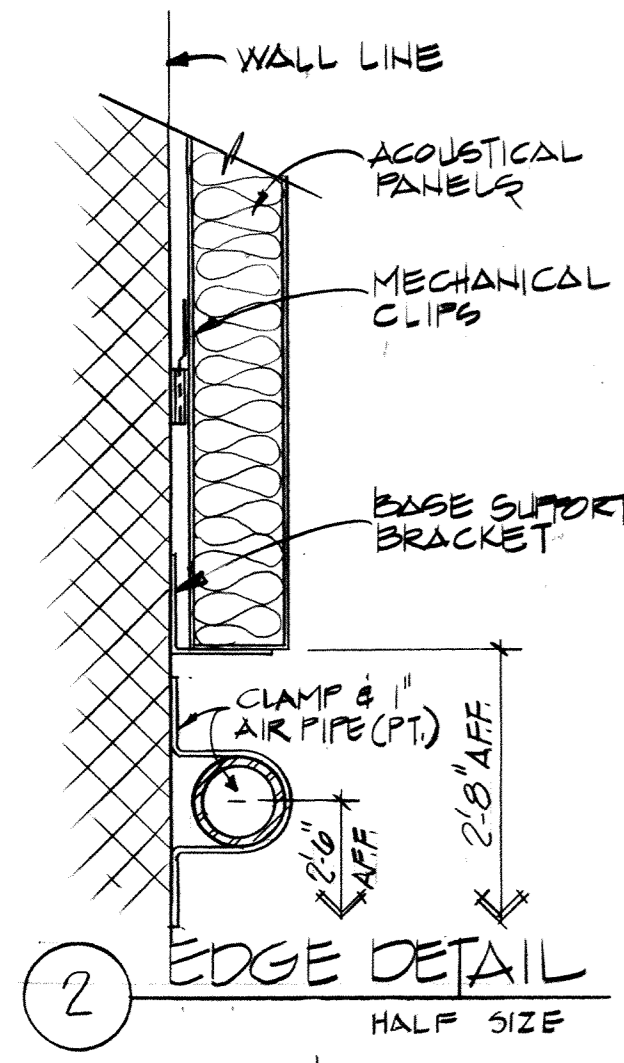
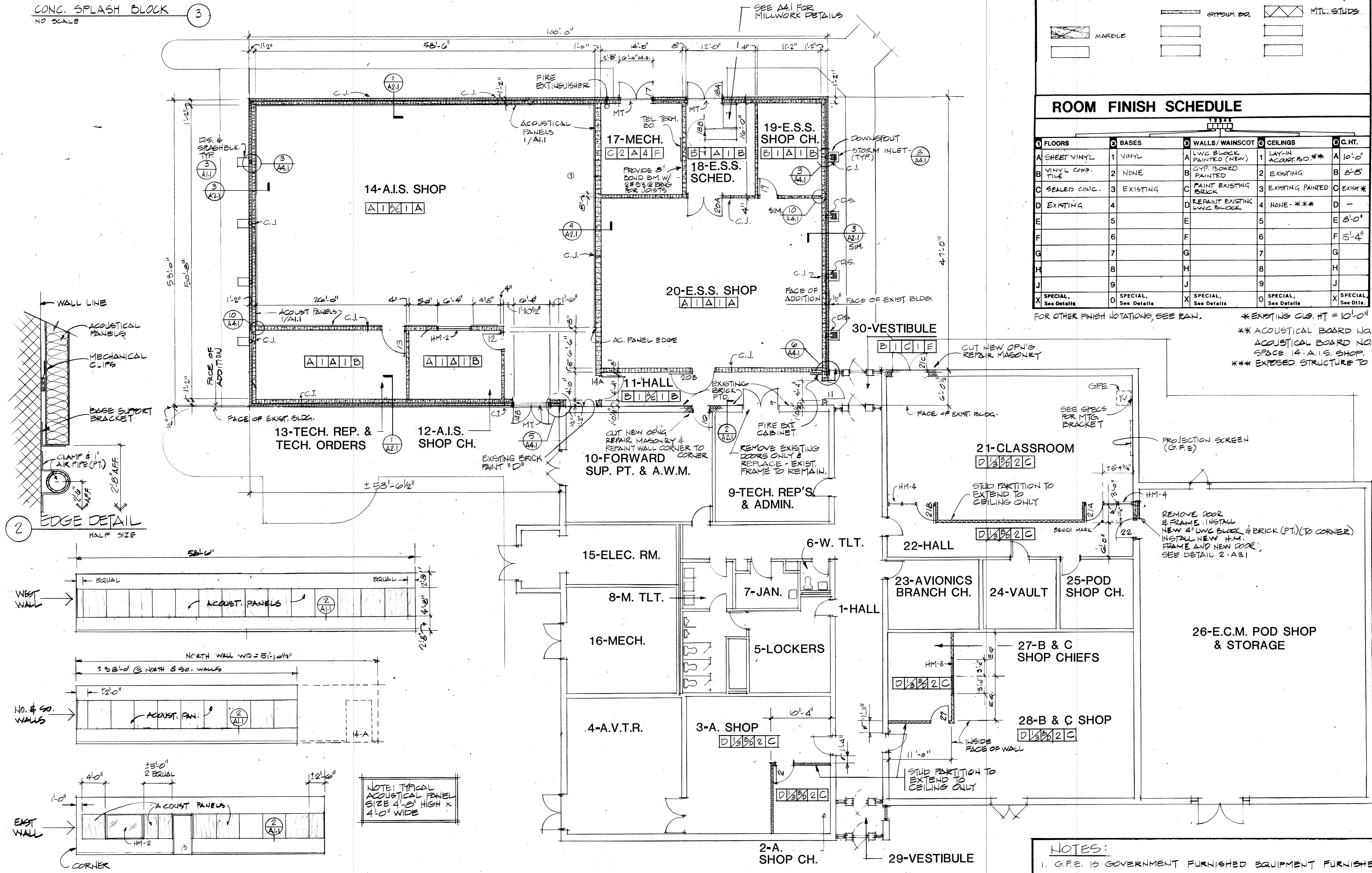
	EARTH		ROUGH WOOD		PLASTER
	DRAINAGE FILL		FINISH WOOD		ARCHITECTURAL CONCRETE
	CONCRETE		PLYWOOD (L.S.)		WOOD STUDS
	BRICK		WOOD (S.S.)		BATT INSUL.
	LWC BLK SECTION		METAL		INSULATION
	LWC BLK PLAN		GYPSUM BOARD (L.S.)		CER. TILE (S.S.)
	MARBLE		GYPSUM DG.		MILL STUDS

ROOM FINISH SCHEDULE

FLOORS	BASES	WALLS/WAINSCOT	CEILINGS	C.H.T.
A SHEET VINYL	1 VINYL	A LWC BLOCK PAINTED (NEW)	1 LAY-IN ACoust. Bd. **	A 10'-0"
B VINYL COMP. TILE	2 NONE	B GYP. BOARD PAINTED	2 EXISTING	B 8'-6"
C SEALED CONC.	3 EXISTING	C PAINT EXISTING BRICK	3 EXISTING PAINTED	C EXIST *
D EXISTING	4	D REPAINT EXISTING LWC BLOCK	4 NONE ***	D -
E	5	E	5	E 8'-0"
F	6	F	6	F 15'-4"
G	7	G	7	G
H	8	H	8	H
J	9	J	9	J
X SPECIAL, See Details	0 SPECIAL, See Details	X SPECIAL, See Details	0 SPECIAL, See Details	X SPECIAL, See Dets.

FOR OTHER FINISH NOTATIONS, SEE PLAN. * EXISTING C.B. HT = 10'-0"

** ACoustical BOARD NO 1 - TYPICAL
ACoustical BOARD NO 2 - ONLY IN SPACE 14-A.I.S. SHOP
*** EXPOSED STRUCTURE TO BE PAINTED.

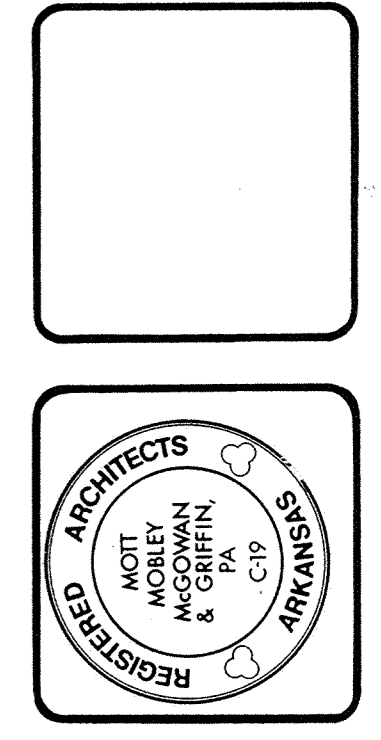


NOTE: TYPICAL ACOUSTICAL PANEL SIZE 4'-0" HIGH X 4'-0" WIDE

FLOOR PLAN
1/8" = 1'-0"

NOTES:
1. G.F.E. IS GOVERNMENT FURNISHED EQUIPMENT FURNISHED BY OWNER.
2. NEW STUD PARTITIONS IN 2, 21, & 27 SHALL EXTEND TO CEILING ONLY.

MM MG
Mott Mobley McGowan & Griffin, P.A., Architects
302 North Sixth Street
Fort Smith, Arkansas 72901



PROJECT NO. FSM-40997
ADD./ALTER AVONICS/ECM POD SHOP/STORAGE
AIR NATIONAL GUARD TRAINING FACILITY
MUNICIPAL AIRPORT - FT. SMITH, ARKANSAS

FLOOR PLAN
FINISH
SCHEDULE

As-built info:
4-12-90
Revisions
1357
Plan Number
11-16-88
Date
A1.1
Of 23