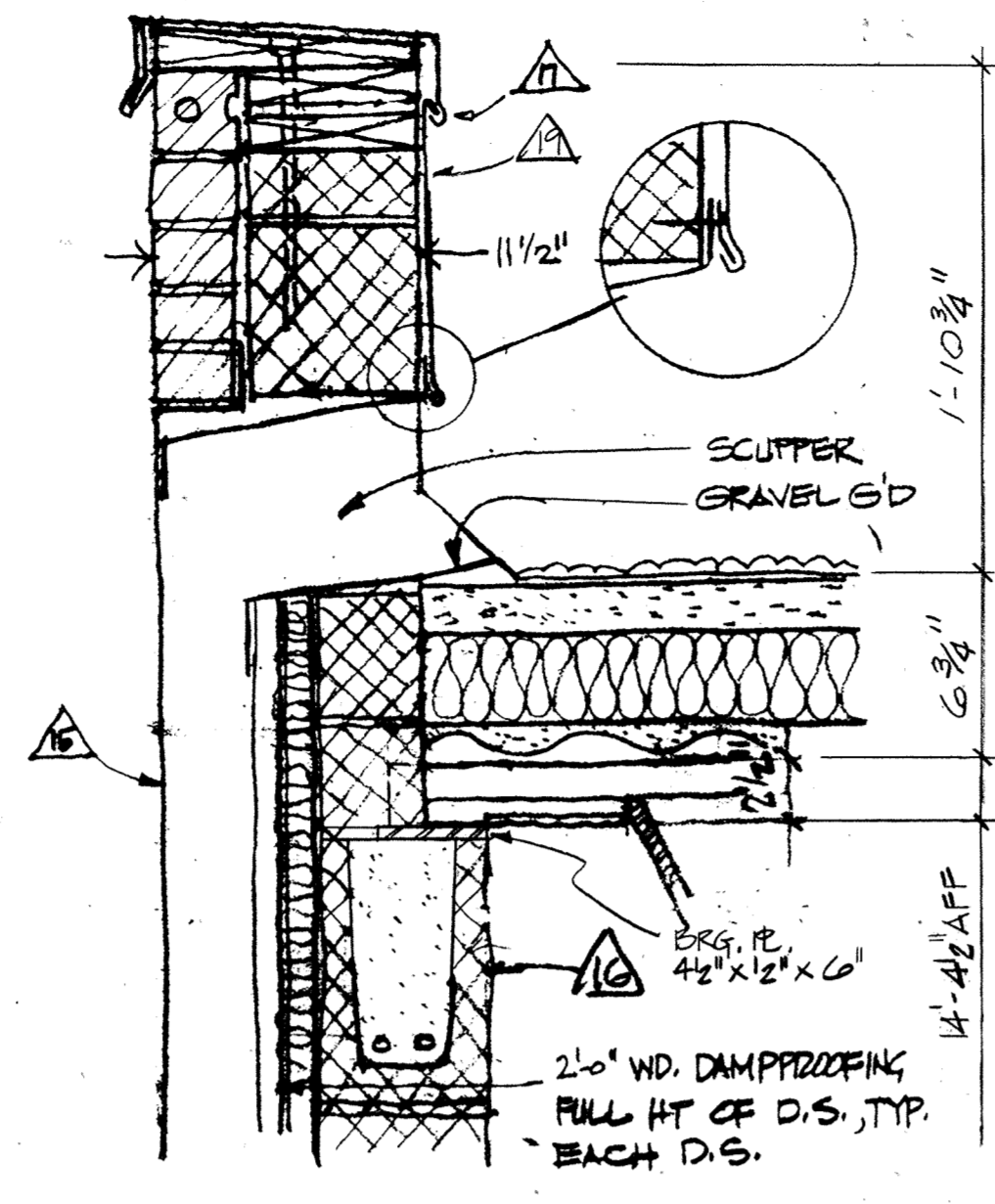
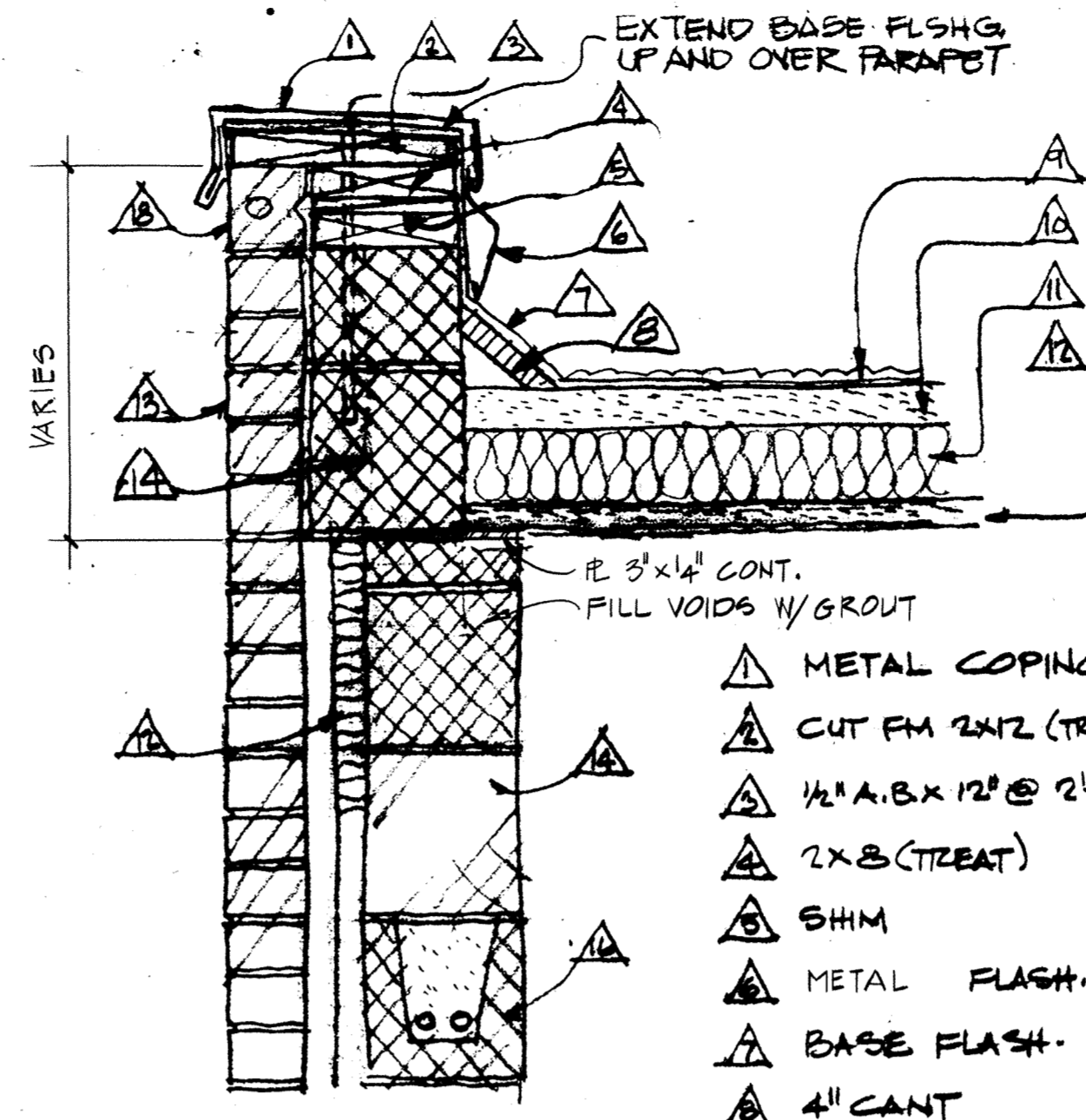


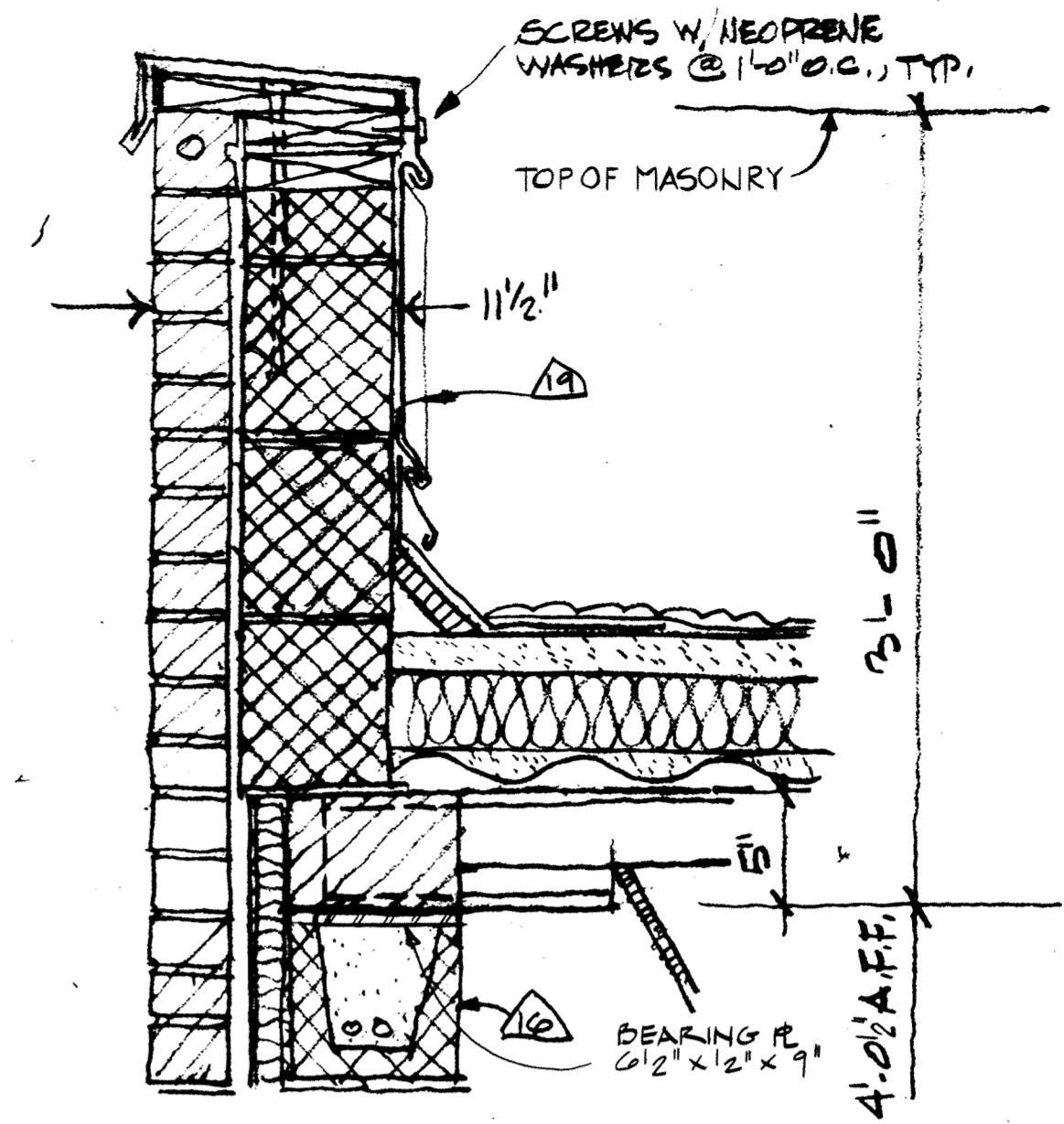
1 DETAIL
1/2" = 1'-0"



2 DETAIL
1/2" = 1'-0"

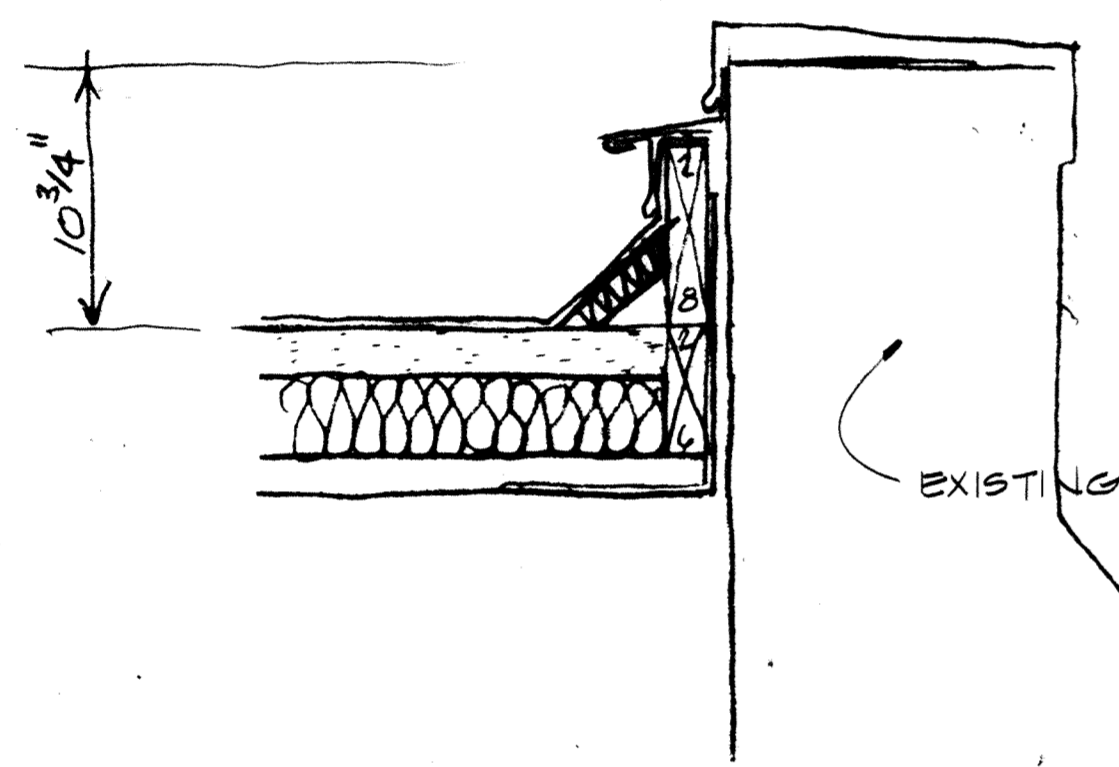


3 DETAIL
1/2" = 1'-0"

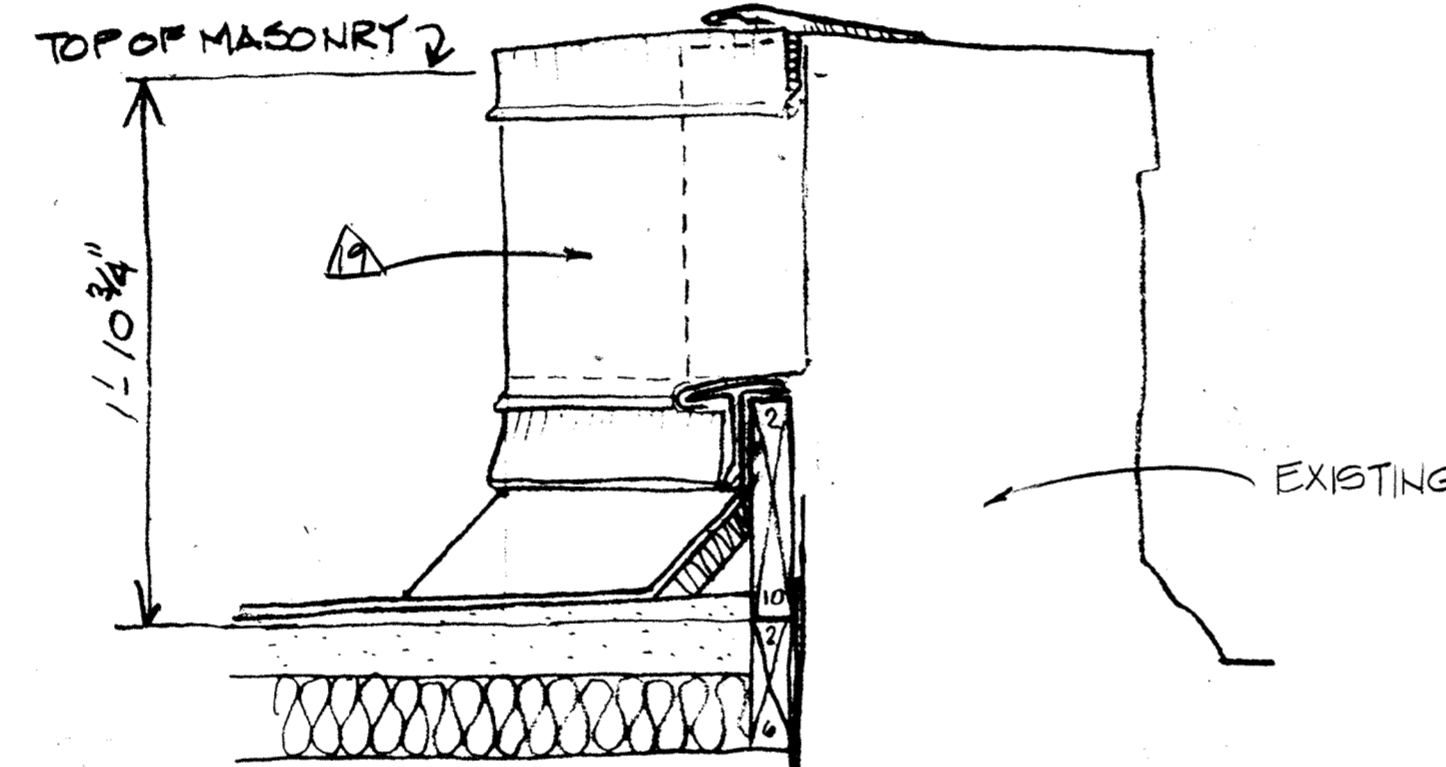


4 DETAIL
1/2" = 1'-0"

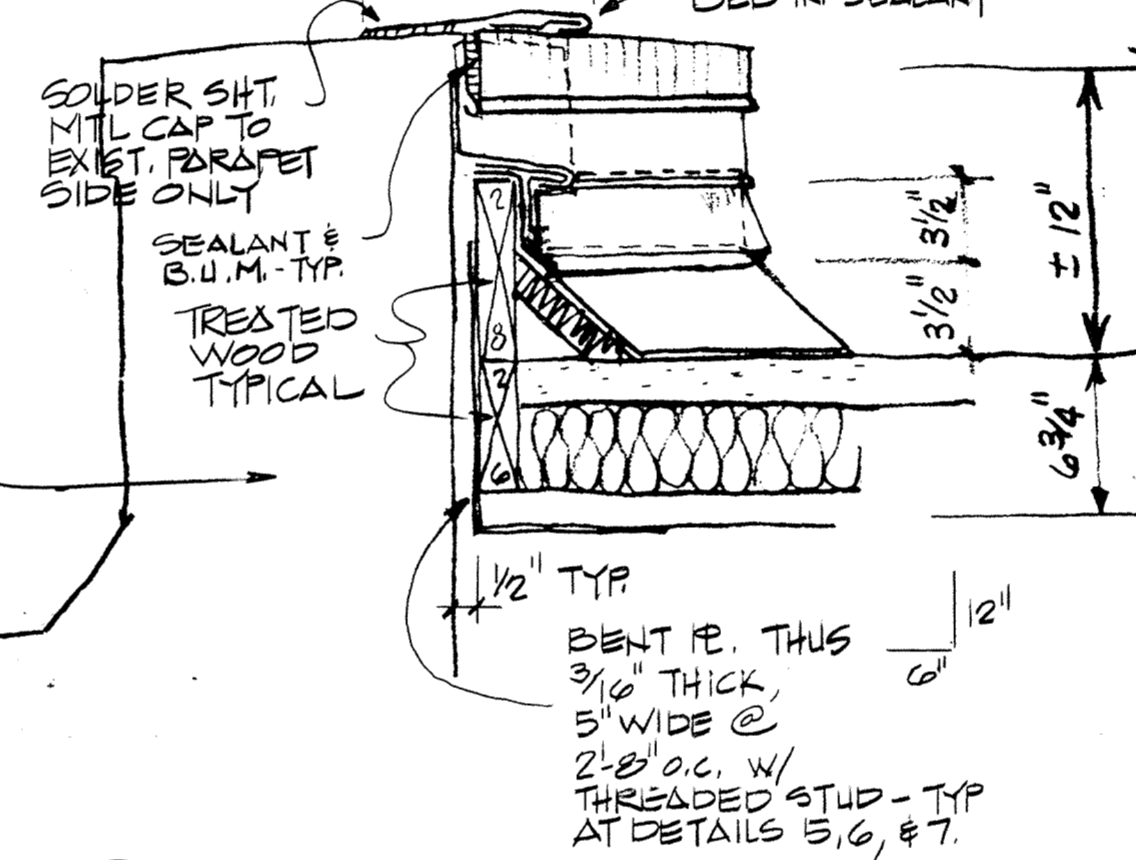
- ▲ METAL COPING
- ▲ CUT FM 2X12 (TREAT.)
- ▲ 1/2" A.B. X 12" @ 2'-8" O.C.
- ▲ 2X8 (TREAT.)
- ▲ SHIM
- ▲ METAL FLASH.
- ▲ BASE FLASH.
- ▲ 4" CANT
- ▲ MEMBRANE ROOF
- ▲ INSUL. CONC. (2" MIN.)
- ▲ RIGID INSUL (3 1/2")
- ▲ MTL CENTERING
- ▲ FACE BRICK
- ▲ LWC BLOCK
- ▲ DOWNSPOUT
- ▲ CONT. BOND BEAM W/ 2" E
- ▲ SCREWS W/ NEOPRENE WASHERS @ 14" O.C.
- ▲ BRICK RONLOCK
- ▲ STANDING SEAM MTL. PAN. @ 8" TO 10" O.C. MAX. (COPPER)



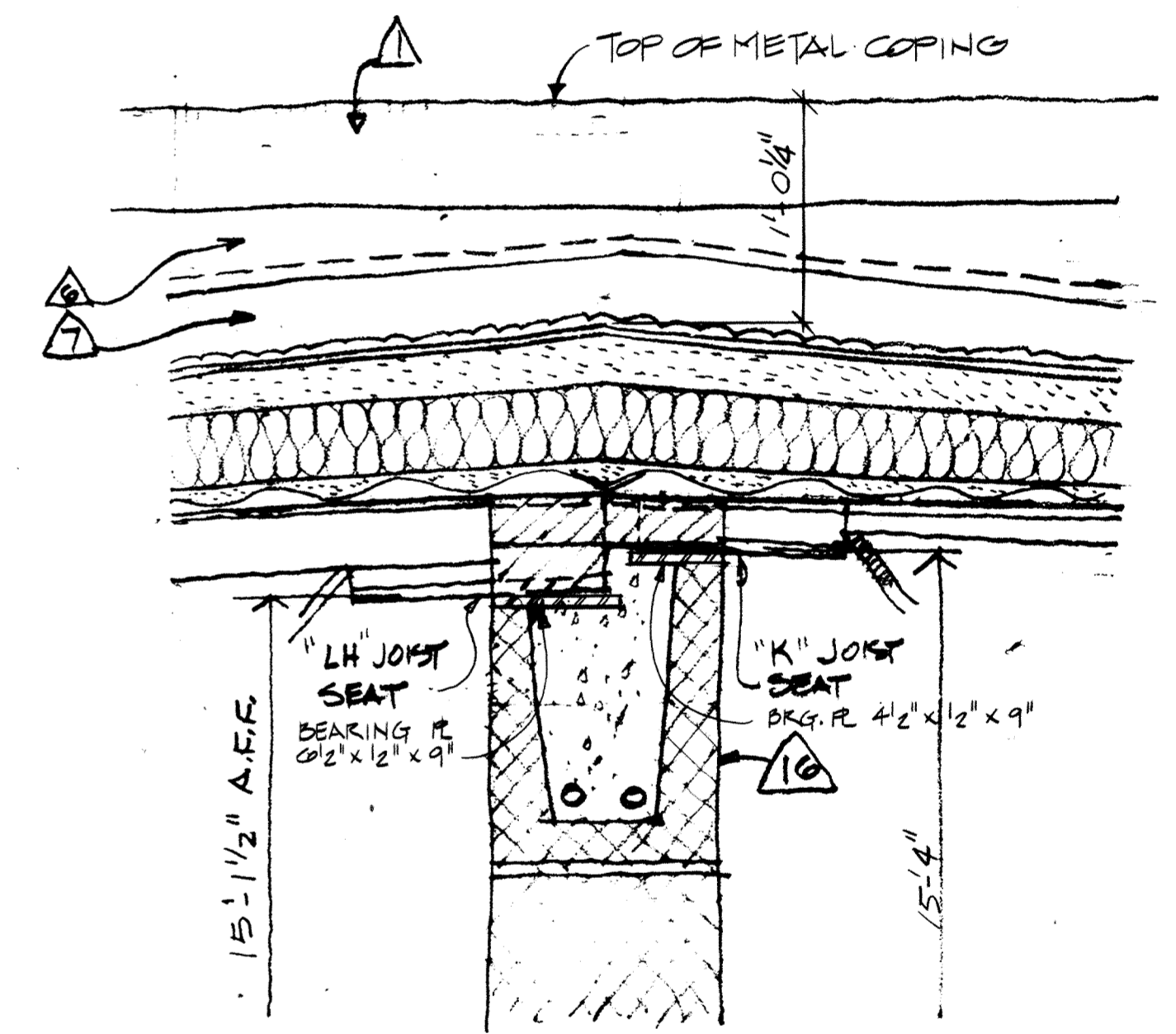
5 DETAIL
1/2" = 1'-0"



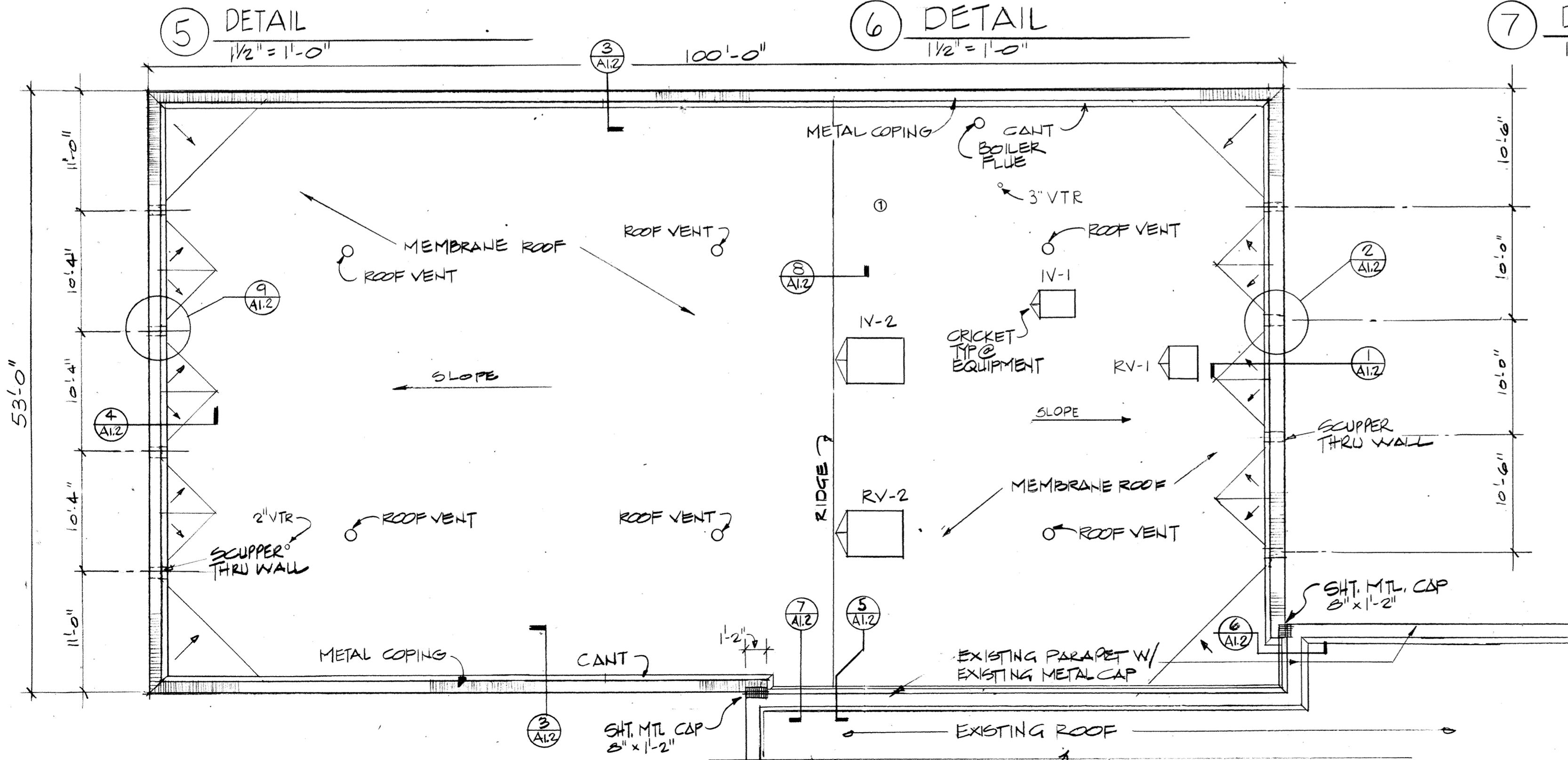
6 DETAIL
1/2" = 1'-0"



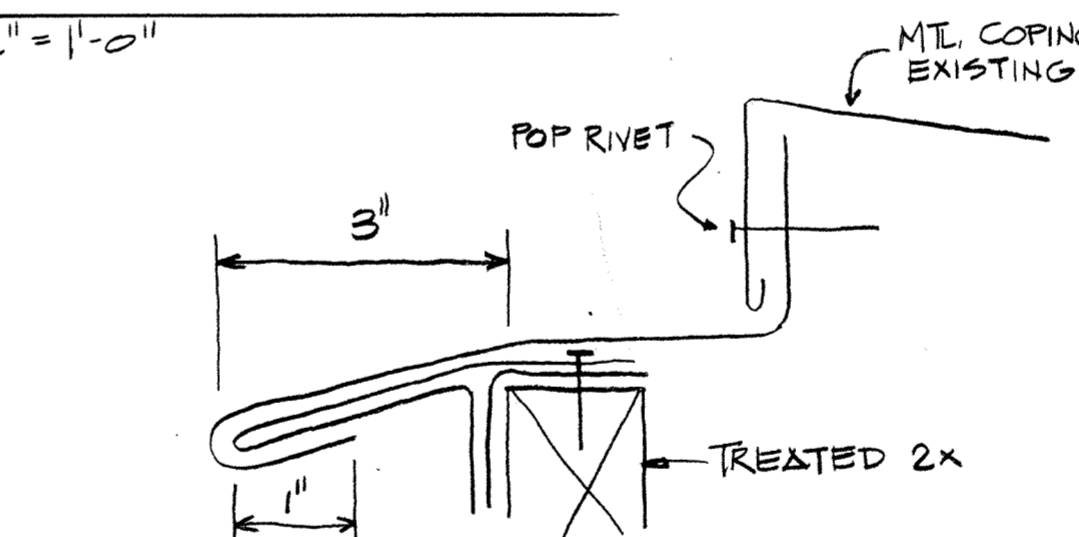
7 DETAIL
1/2" = 1'-0"



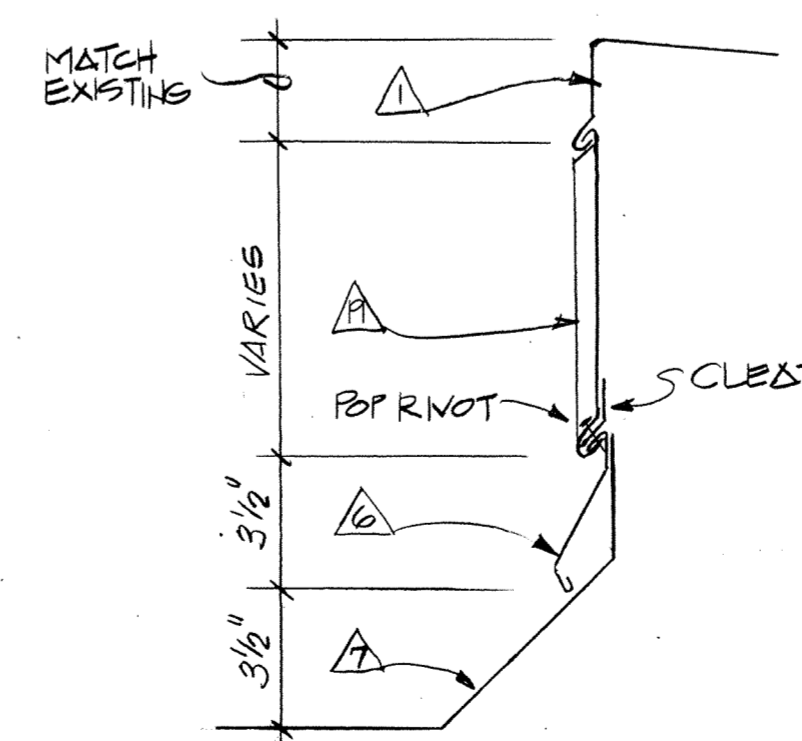
8 DETAIL
1/2" = 1'-0"



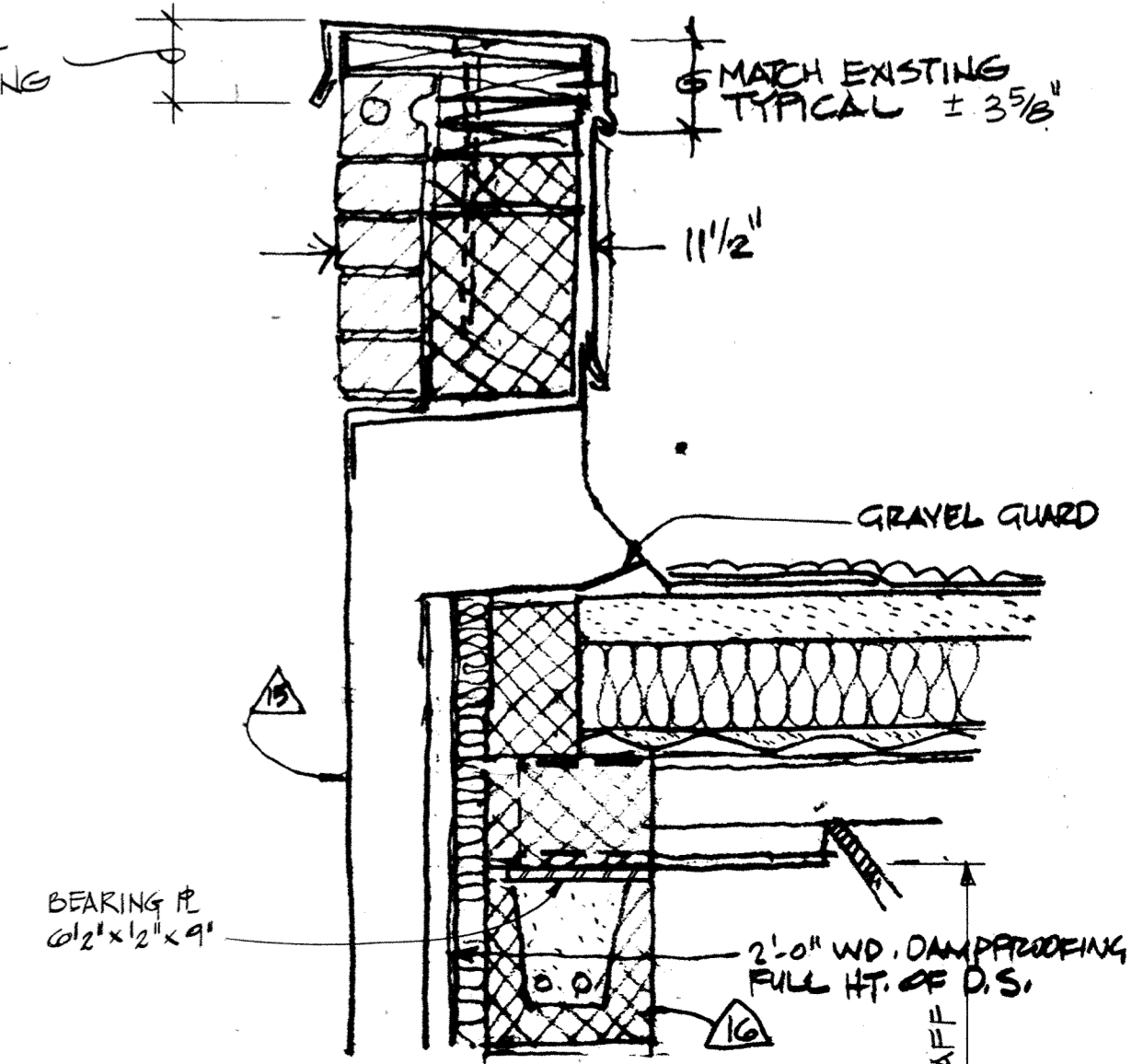
ROOF PLAN @ 1/8" = 1'-0"



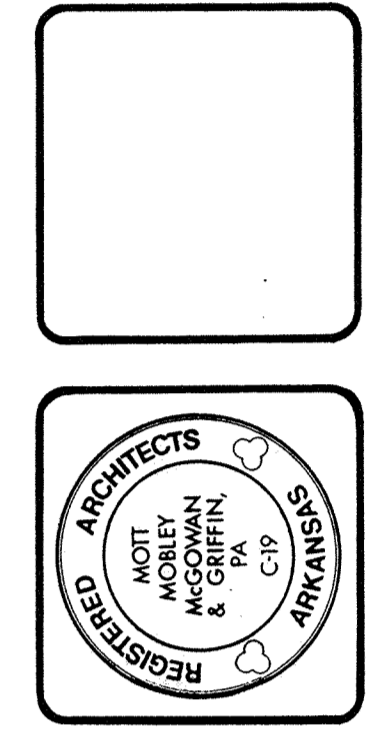
10 DETAIL
1/2" = 1'-0"



11 TYPICAL FLASHING DETAIL



9 DETAIL
1/2" = 1'-0"



CONTRACT NO. DAAH03-87-C-7-0007
PROJECT NO. FSM-40997
ADD./ALTER AVONICS/ECM POD SHOP/STORAGE
AIR NATIONAL GUARD TRAINING FACILITY
MUNICIPAL AIRPORT - FT. SMITH, ARKANSAS

ROOF PLAN & DETAILS

As-built info: 4-12-90 ①	1357 Plan Number	A1.2
Revisions		
11-16-88	Date	of 23