

CONC. SPLASH BLOCK
NO SCALE

MATERIALS LEGEND

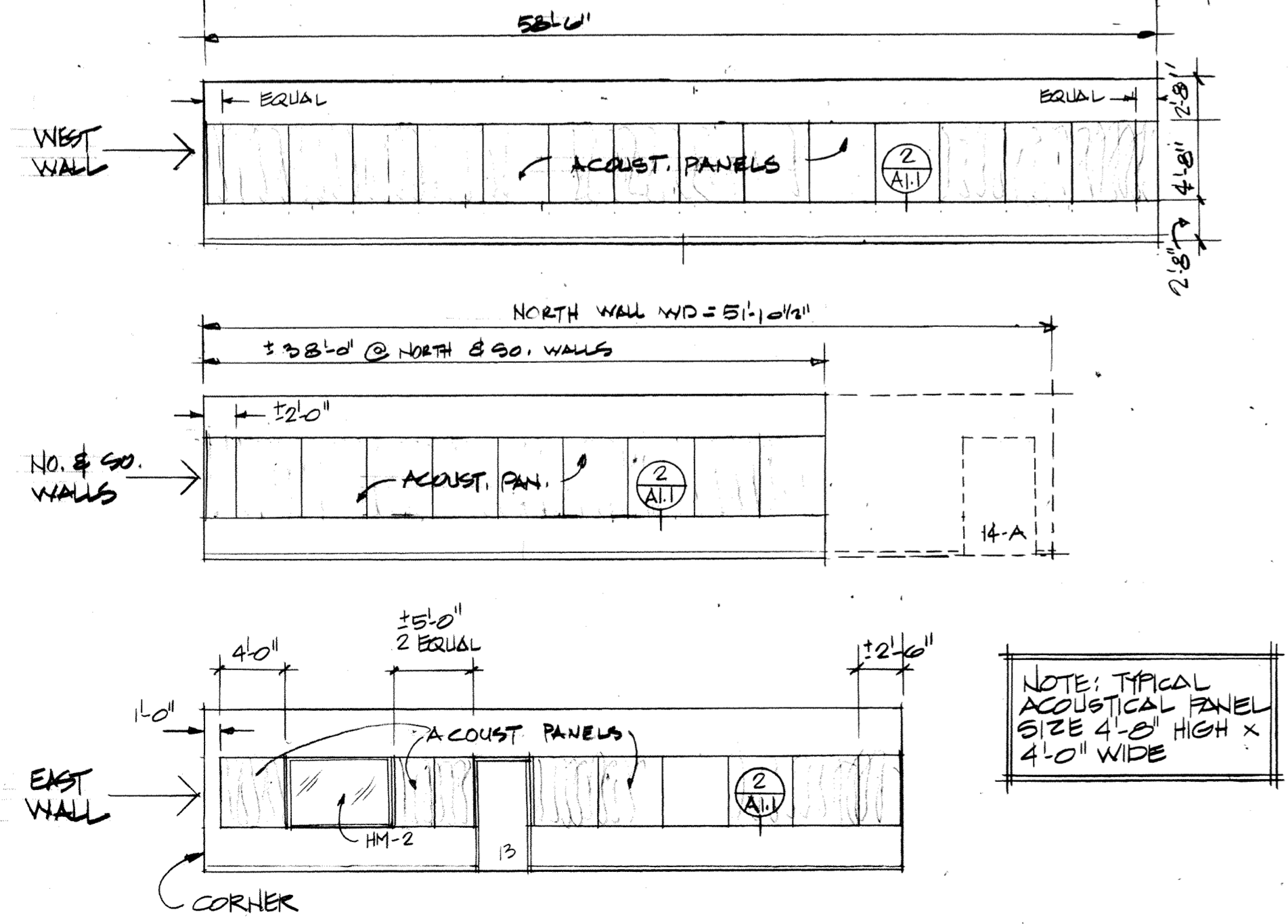
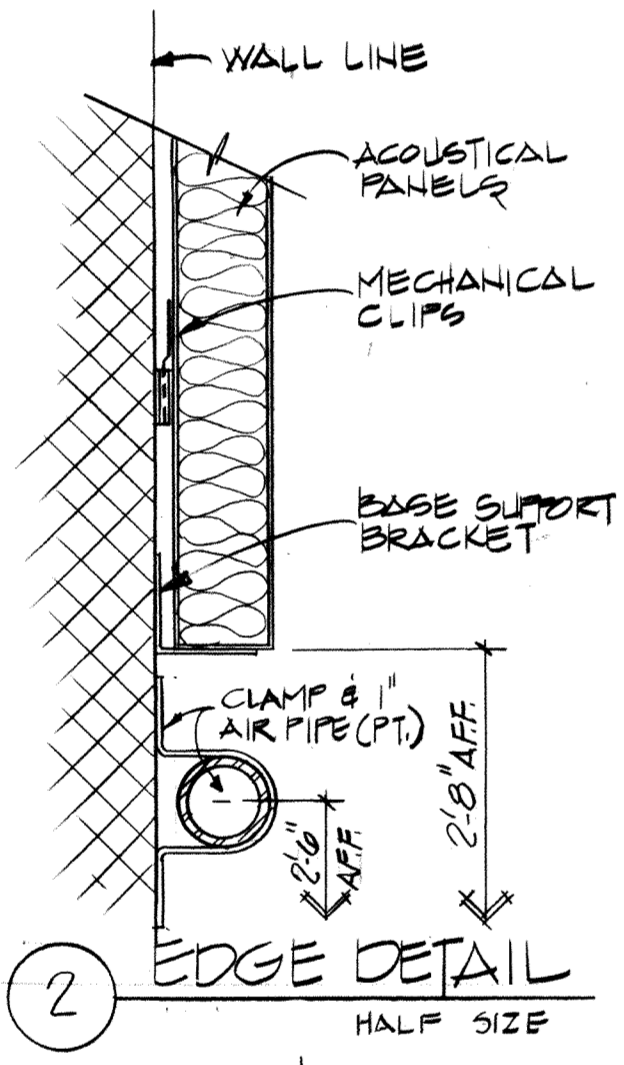
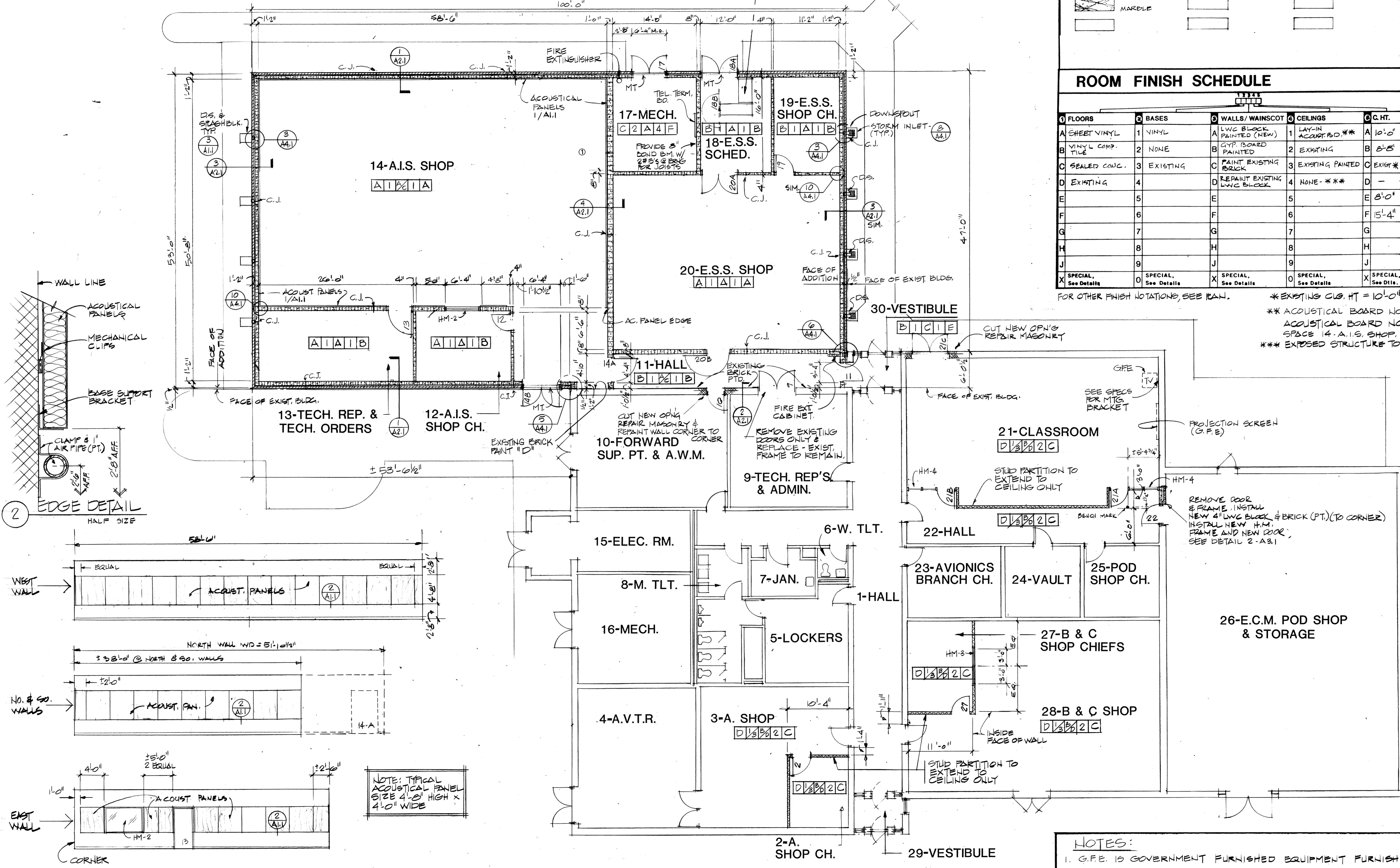
	1. EARTH		1. ROUGH WOOD		1. PLASTER
	2. DRAINAGE FILL		2. FINISH WOOD		2. ARCHITECTURAL CONCRETE
	3. CONCRETE		3. PLYWOOD (1/2)		3. WOOD STUDS
	4. BRICK		4. WOOD (3/4)		4. BATT INSUL.
	5. LWC BLK SECTION		5. METAL		5. INSULATION
	6. LWC BLK PLAN		6. GYPSUM BOARD (1/2)		6. CER. TILE (3/8)
	7. MARBLE		7. GYPSUM BR.		7. MTL. STUDS

ROOM FINISH SCHEDULE

FLOORS	BASES	WALLS/WAINSCOT	CEILINGS	C.H.T.
A SHEET VINYL	1 VINYL	A LWC BLOCK PAINTED (NEW)	1 LAY-IN ACoust. BO. **	A 10'-0"
B VINYL COMP. TILE	2 NONE	B GYP BOARD PAINTED	2 EXISTING	B 8'-0"
C SEALED CONC.	3 EXISTING	C PAINT EXISTING BRICK	3 EXISTING PAINTED	C EXIST *
D EXISTING	4	D REPAINT EXISTING LWC BLOCK	4 NONE - ***	D -
E	5	E	5	E 8'-0"
F	6	F	6	F 15'-4"
G	7	G	7	G
H	8	H	8	H
J	9	J	9	J
X SPECIAL, See Details	0 SPECIAL, See Details	X SPECIAL, See Details	0 SPECIAL, See Details	X SPECIAL, See Dtls.

FOR OTHER FINISH NOTATIONS, SEE PLAN.

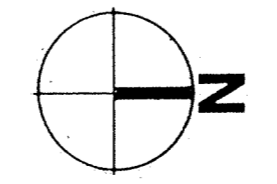
* EXISTING CUS. HT = 10'-0"
** ACoustICAL BOARD NO. 1 - TYPICAL
ACoustICAL BOARD NO. 2 - ONLY IN SPACE 14-A.I.S. SHOP.
*** EXPOSED STRUCTURE TO BE PAINTED.



NOTE: TYPICAL ACOUSTICAL PANEL SIZE 4'-0" HIGH X 4'-0" WIDE

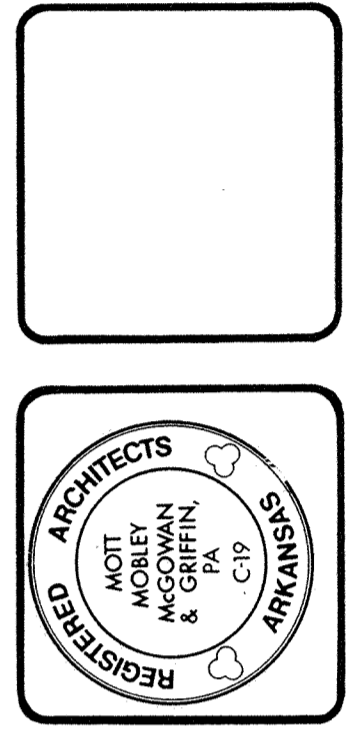
FLOOR PLAN

1/8" = 1'-0"



NOTES:
1. G.F.E. IS GOVERNMENT FURNISHED EQUIPMENT FURNISHED BY OWNER.
2. NEW STUD PARTITIONS IN 2, 21, & 27 SHALL EXTEND TO CEILING ONLY.

MM MG
Mott Mobley McGowan & Griffin, P.A.: Architects
302 North Sixth Street
Fort Smith, Arkansas 72901



CONTRACT NO. DAH403 - 87 - C - 0007
PROJECT NO. FSM-40997
ADD./ALTER AVIONICS/ECM POD SHOP/STORAGE
AIR NATIONAL GUARD TRAINING FACILITY
MUNICIPAL AIRPORT - FT. SMITH, ARKANSAS

FLOOR PLAN
FINISH
SCHEDULE

As-built info:
4-12-90
Revisions
1357
Plan Number
11-16-88
Date
A1.1
Of 28