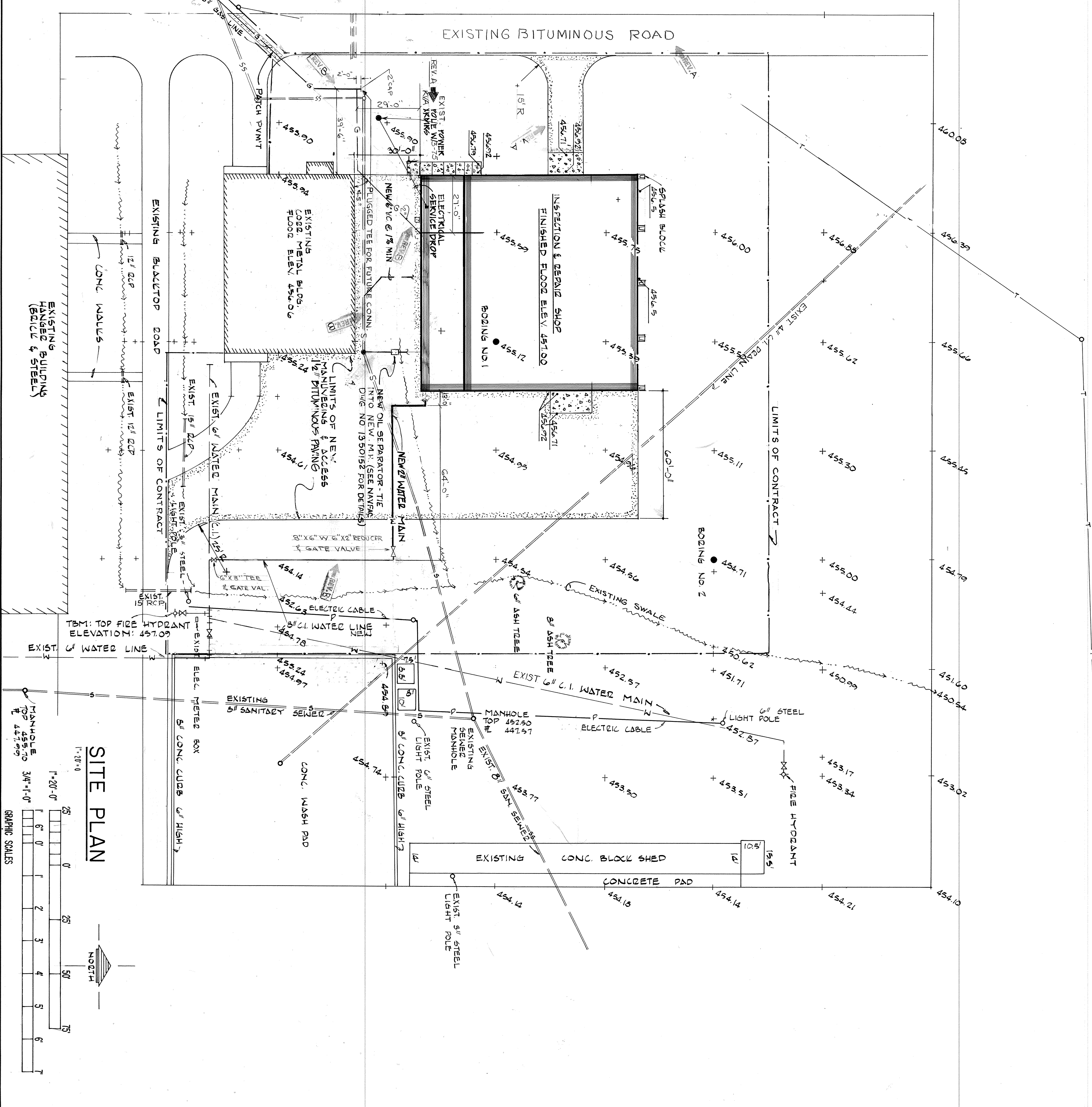
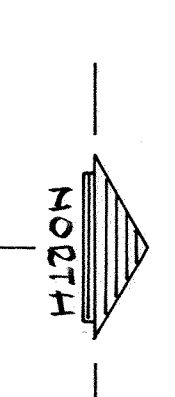
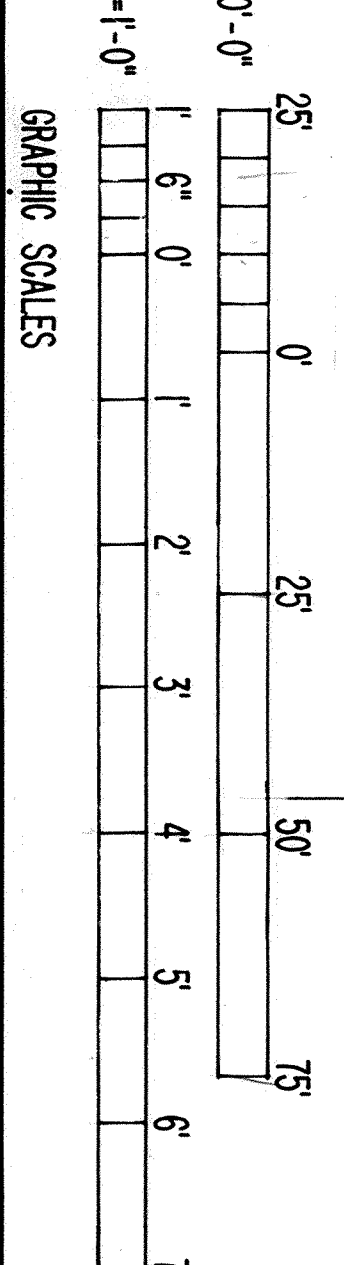


REV	DESCRIPTION	DATE	APPROVED
A	NEW ACCESS ROAD ADDED		
B	NEW MH ADDED LOCATION CHANGED	11/17/72	Handwritten
C	EXISTING ROAD LOCATION CHANGED		
D	REVISED ELECTRICAL SERVICE		
B	WORKS CORRECTED TO AS-BUILT	7-24-73	HANNA

BORING NO.	DEPTH	DESCRIPTION
BORING NO. 1	0	FROM TAN & LIGHT GRAY SILTY CLAY STIFF BELOW ONE FT.
	10	VERY STIFF TAN & LIGHT GRAY SILTY CLAY WITH WEATHERED SHALE
	15	VERY STIFF BROWN SILTY CLAYEY WEATHERED SHALE
BORING NO. 2	0	FROM BROWN TAN SILTY CLAY
	10	VERY STIFF TAN & LIGHT GRAY SILTY CLAY WITH PEA GRAVEL
	15	VERY STIFF BROWN AND TAN SILTY CLAYEY WEATHERED SHALE



SITE PLAN



NOTE:
SEE SHEET NO. 13 FOR GRADING AND DRAINAGE.

RECORD DRAWING
DATE: 30 JUN 73

DO NOT SCALE DRAWINGS	
MAHAFFEY & ASSOC.-ENGINEERS METTLELL, ARKANSAS	DEPARTMENT OF THE NAVY NAVAL FACILITIES ENGINEERING COMMAND SOUTHERN DIVISION CHARLESTON, S. C.
DESIGN BY: DR. LAZARUS CHECKED BY: [Signature] DATE: 11/17/72	AIR NATIONAL GUARD - MONROE AIRPORT FT. SMITH, ARKANSAS AIRCRAFT ENGINE INSPECTION AND REPAIR SHOP
APPROVED BY: [Signature] DATE: 11/17/72	
PROJECT NO. 80091	SHEET NO. 2 OF 13
CONTRACT NO. N62247-72-C-0554	SCALE: 5/8" = 1'-0"