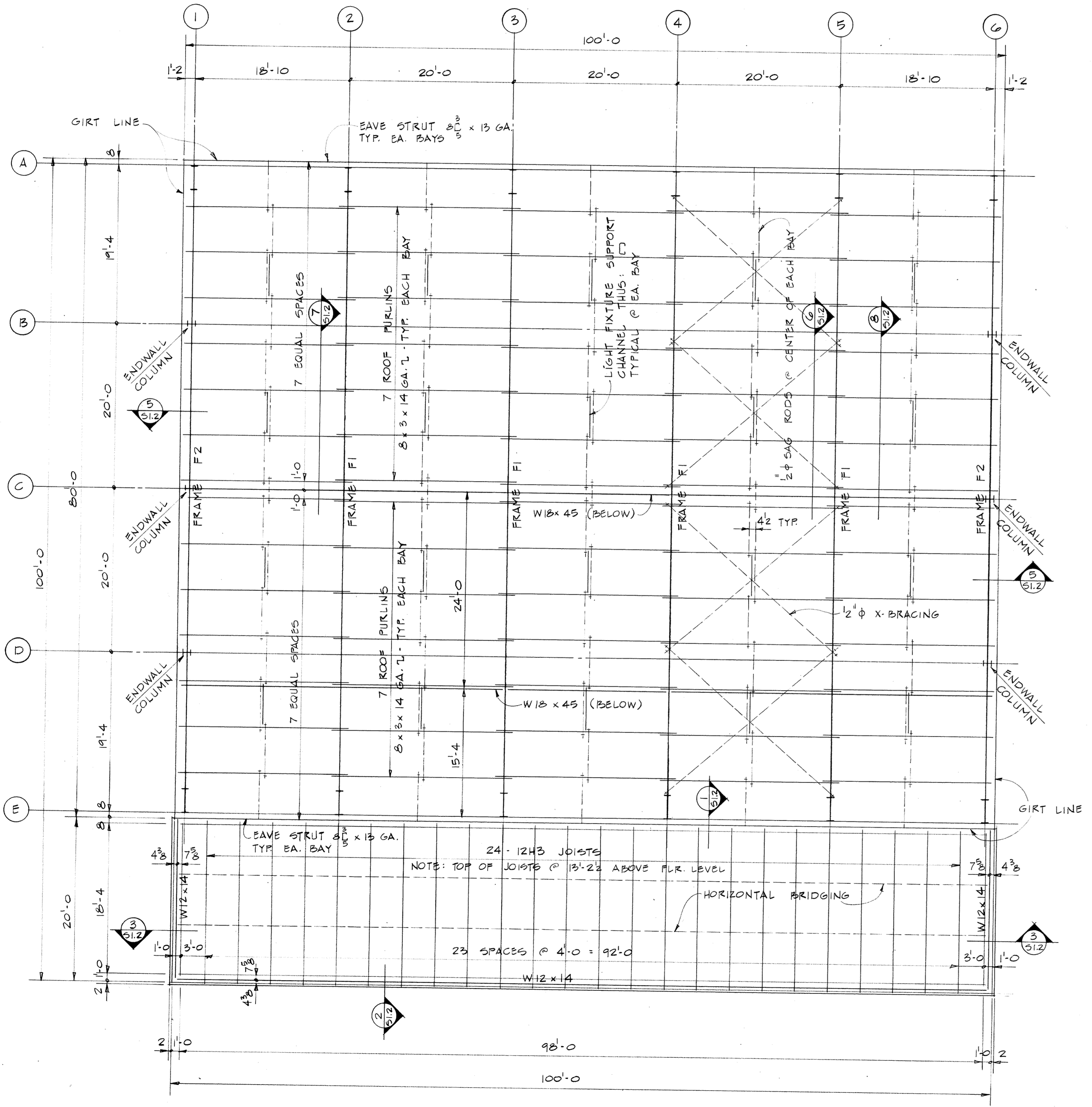
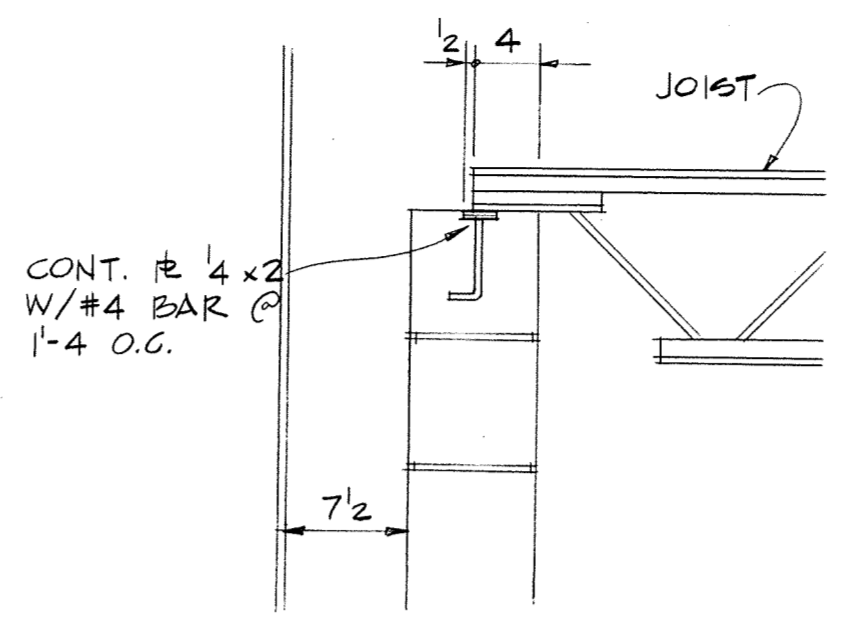


METAL PANEL CONFIGURATION
3/4" = 1'-0"

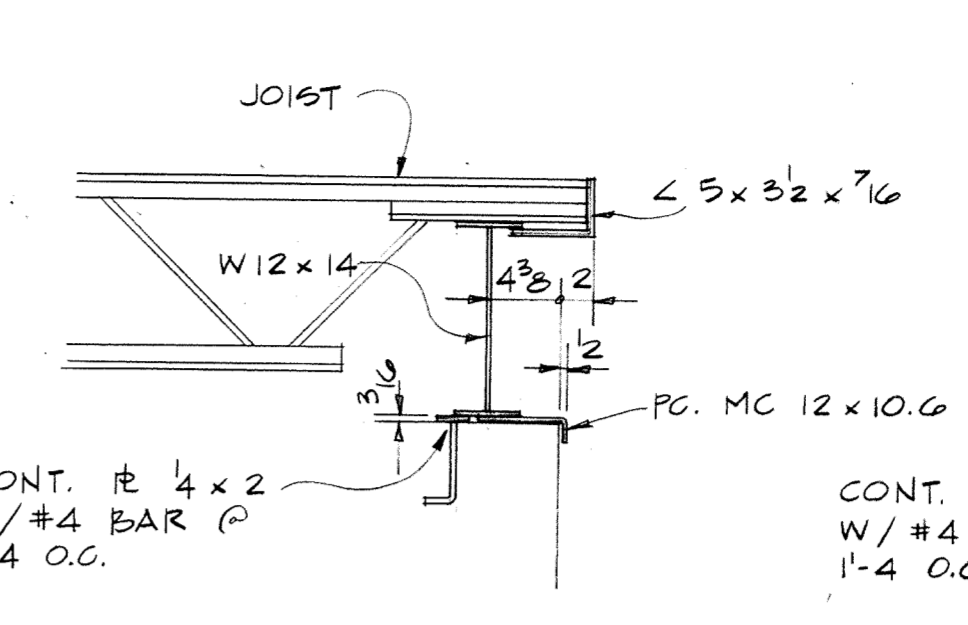


ROOF FRAMING PLAN
3/8" = 1'-0"

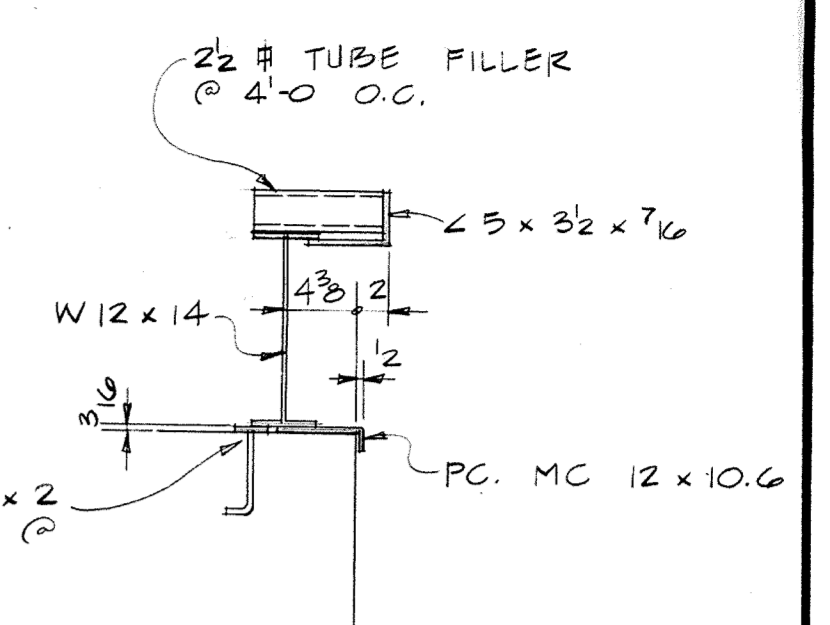
NOTE: STRUCTURAL FRAMING AND DETAILS SHOWN FOR LOW ROOF ARE BASED ON RUSSELLVILLE STEEL COMPANY DRAWINGS F1 AND 1 OF C270, AND OBSERVATIONS. OTHER FRAMING AND DETAILS ARE BASED ON FIELD MEASUREMENT AND OBSERVATIONS.



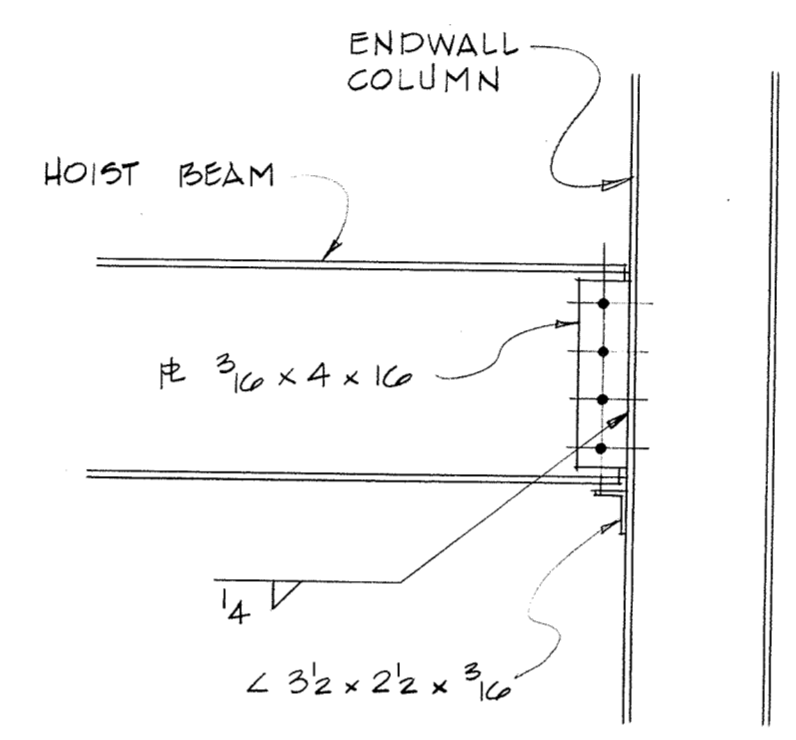
SECTION 1
1" = 1'-0"



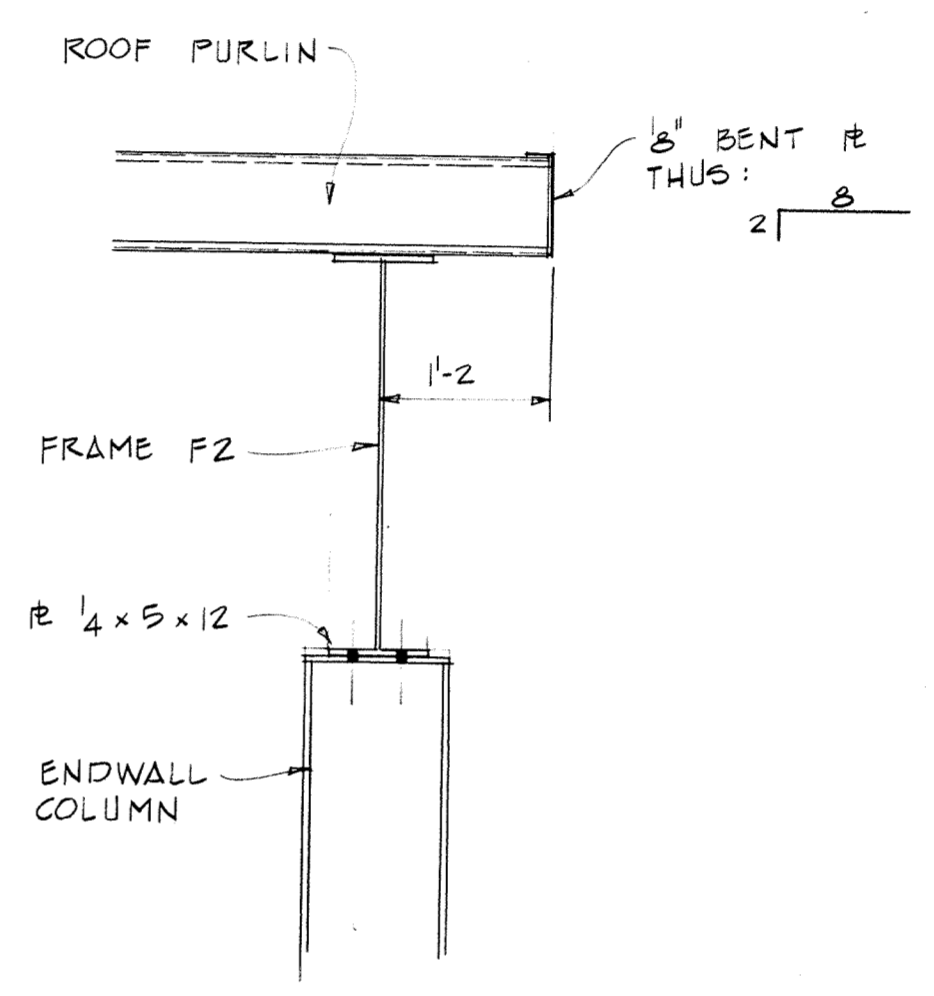
SECTION 2
1" = 1'-0"



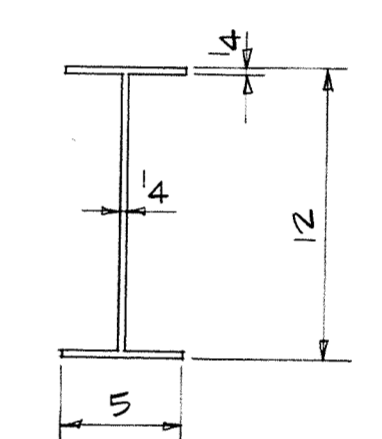
SECTION 3
1" = 1'-0"



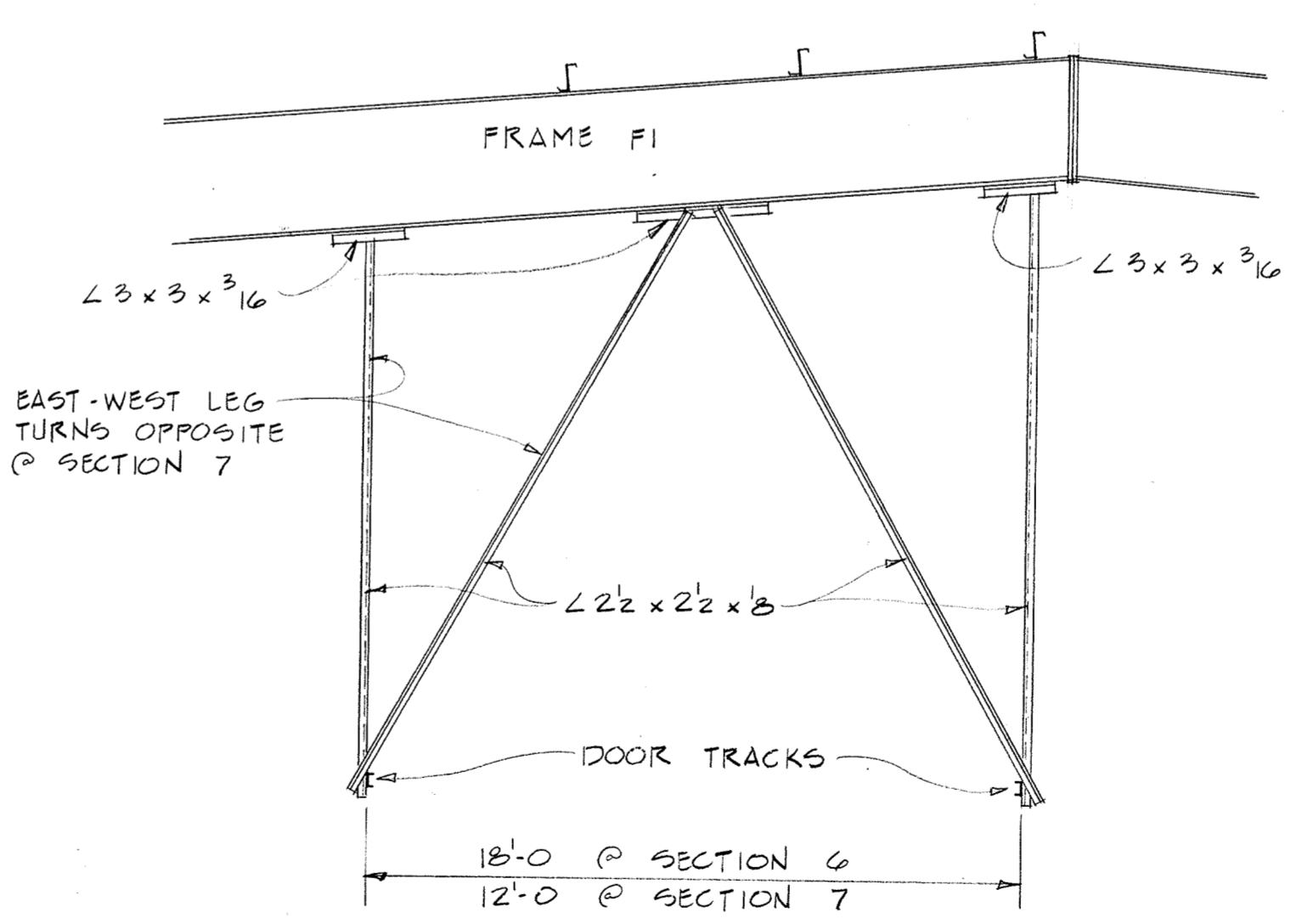
DETAIL 4
3/4" = 1'-0"
(HOIST BEAM TO ENDWALL COLUMN CONNECTION)



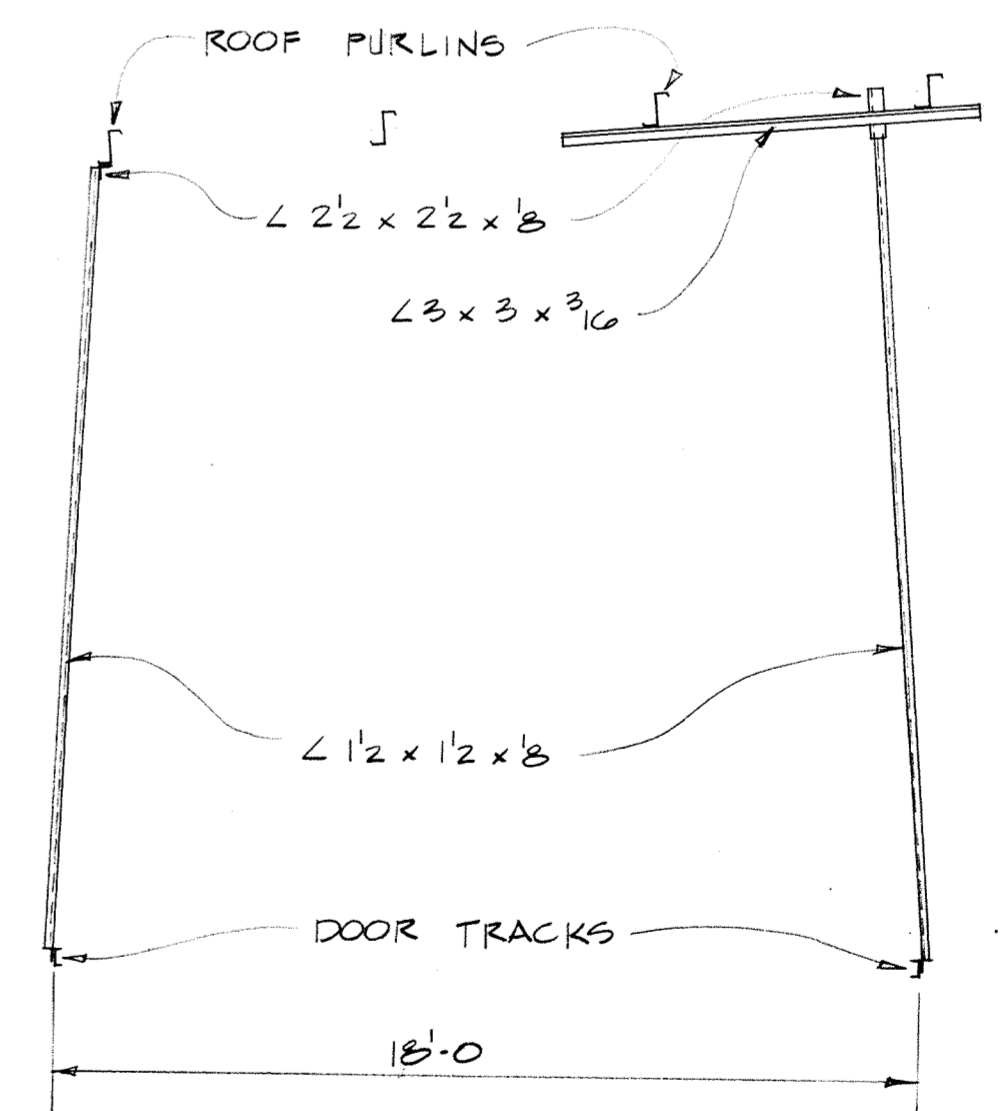
DETAIL 5
3/4" = 1'-0"



ENDWALL COLUMN
1/2" = 1'-0"



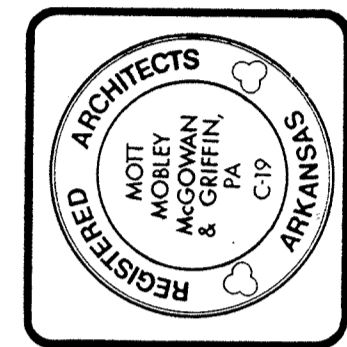
DETAIL 6
NO SCALE
(SUPPORT FRAMING FOR OVERHEAD DOORS)



DETAIL 8
NO SCALE
(SUPPORT FRAMING FOR 15'-0 OVERHEAD DOOR)

MM MG

Mott Mobley McGowan & Griffin P.A. Architects
Fort Smith, Arkansas 72504
302 North Sixth Street



CONTRACT NO. DAH403-87-D-00117.9DOZ
PROJECT NO. HKRZ - 001274
ADAL ENGINE I & R SHOP
AIR NATIONAL GUARD TRAINING FACILITY
MUNICIPAL AIRPORT - FT. SMITH, ARKANSAS

AS BUILT
STRUCTURAL
DRAWINGS
OF EXIST.
BUILDING

Revisions	
1370A	S1.2
Plan Number	
4/26/88	Date
	Or