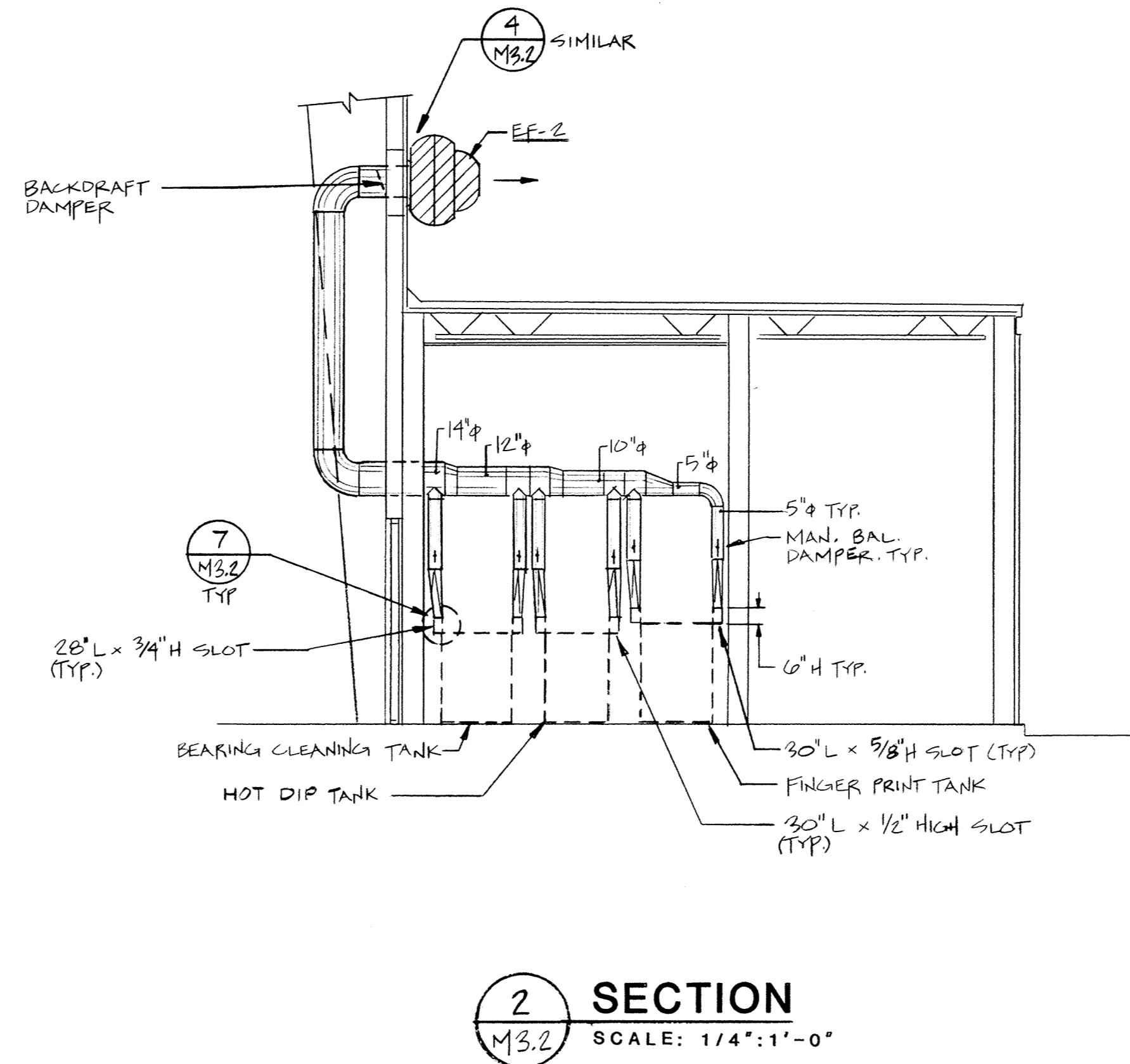
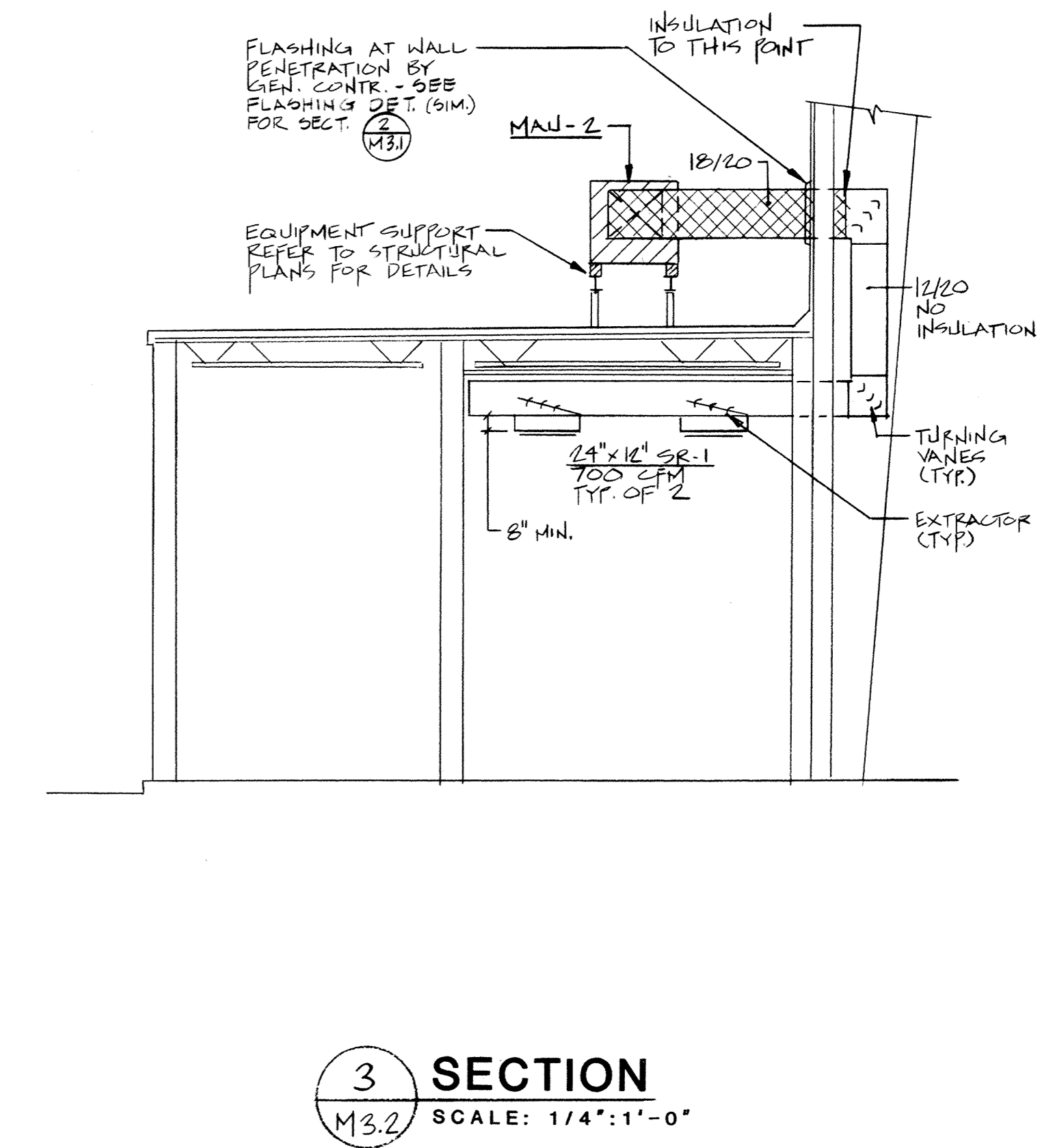


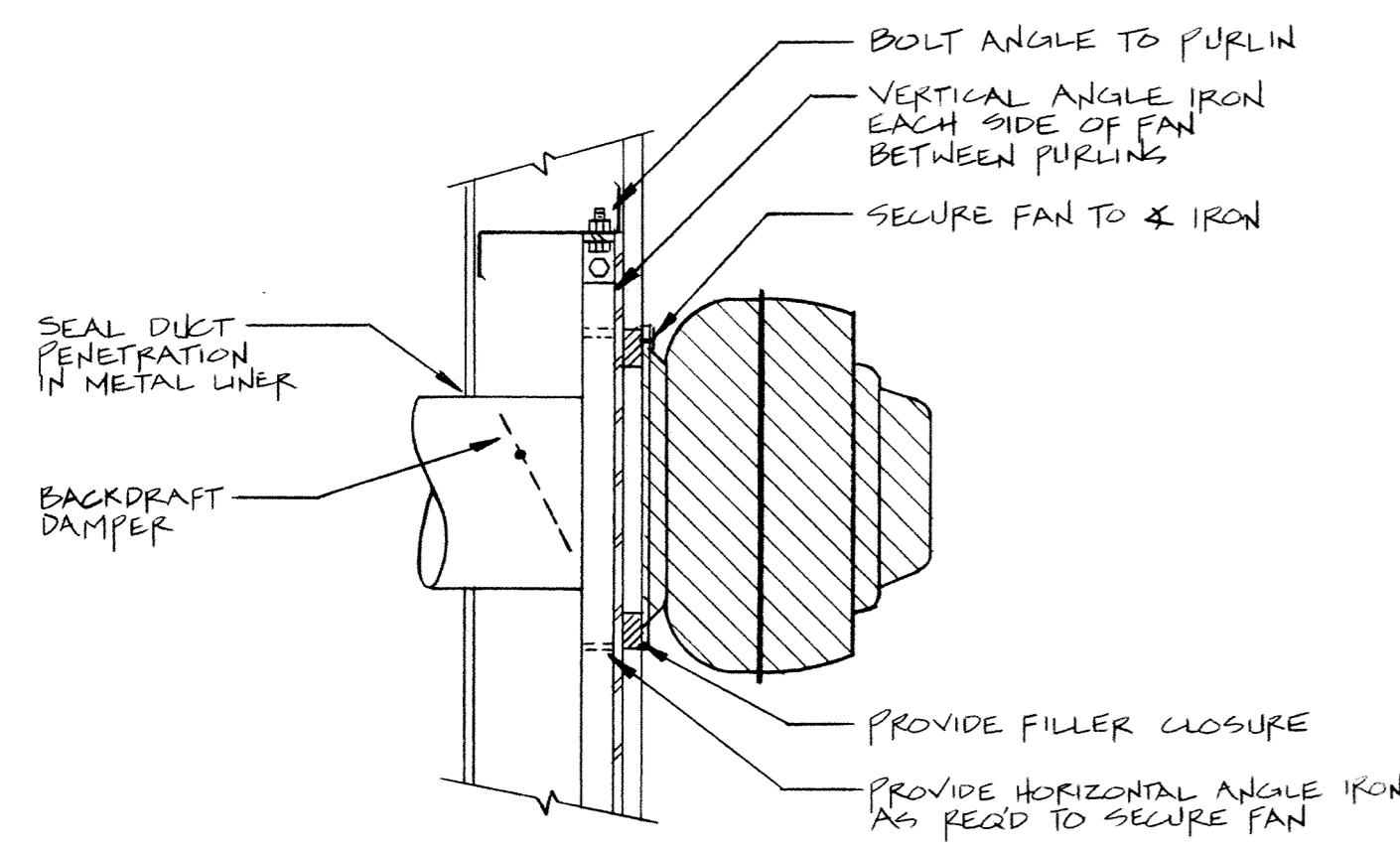
1 PARTIAL PLAN - HVAC
SCALE: 1/4" = 1'-0"
M3.2



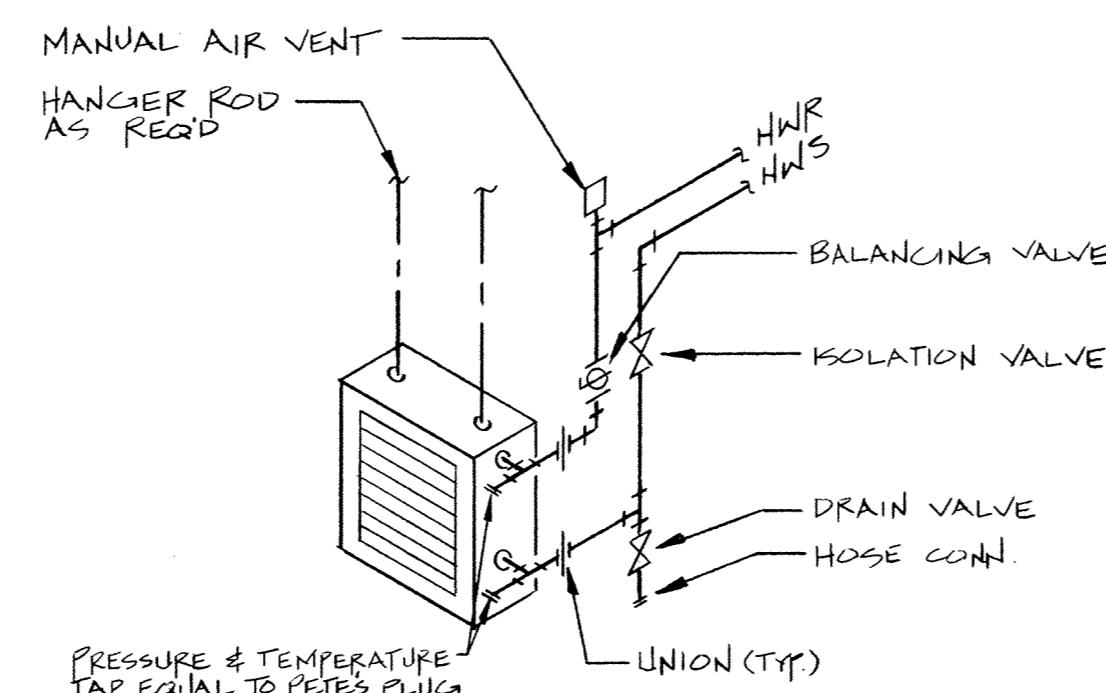
2 SECTION
SCALE: 1/4" = 1'-0"
M3.2



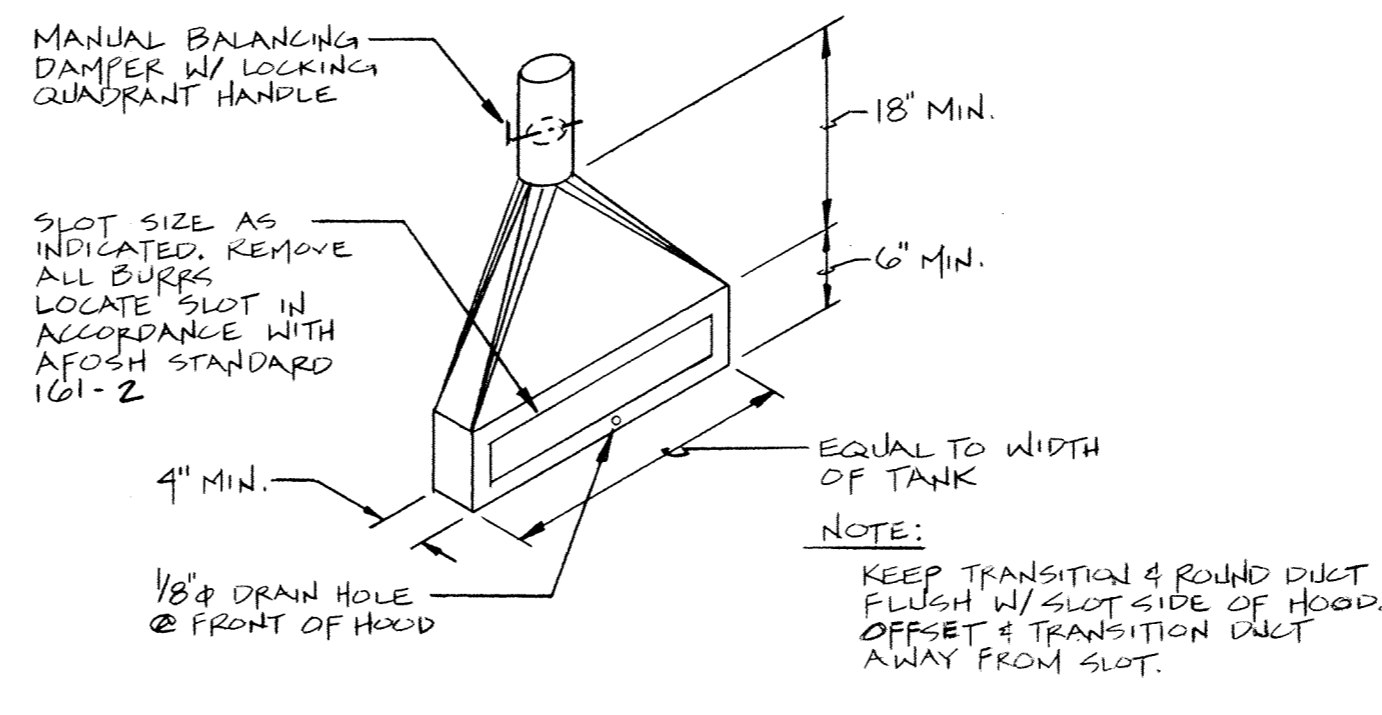
3 SECTION
SCALE: 1/4" = 1'-0"
M3.2



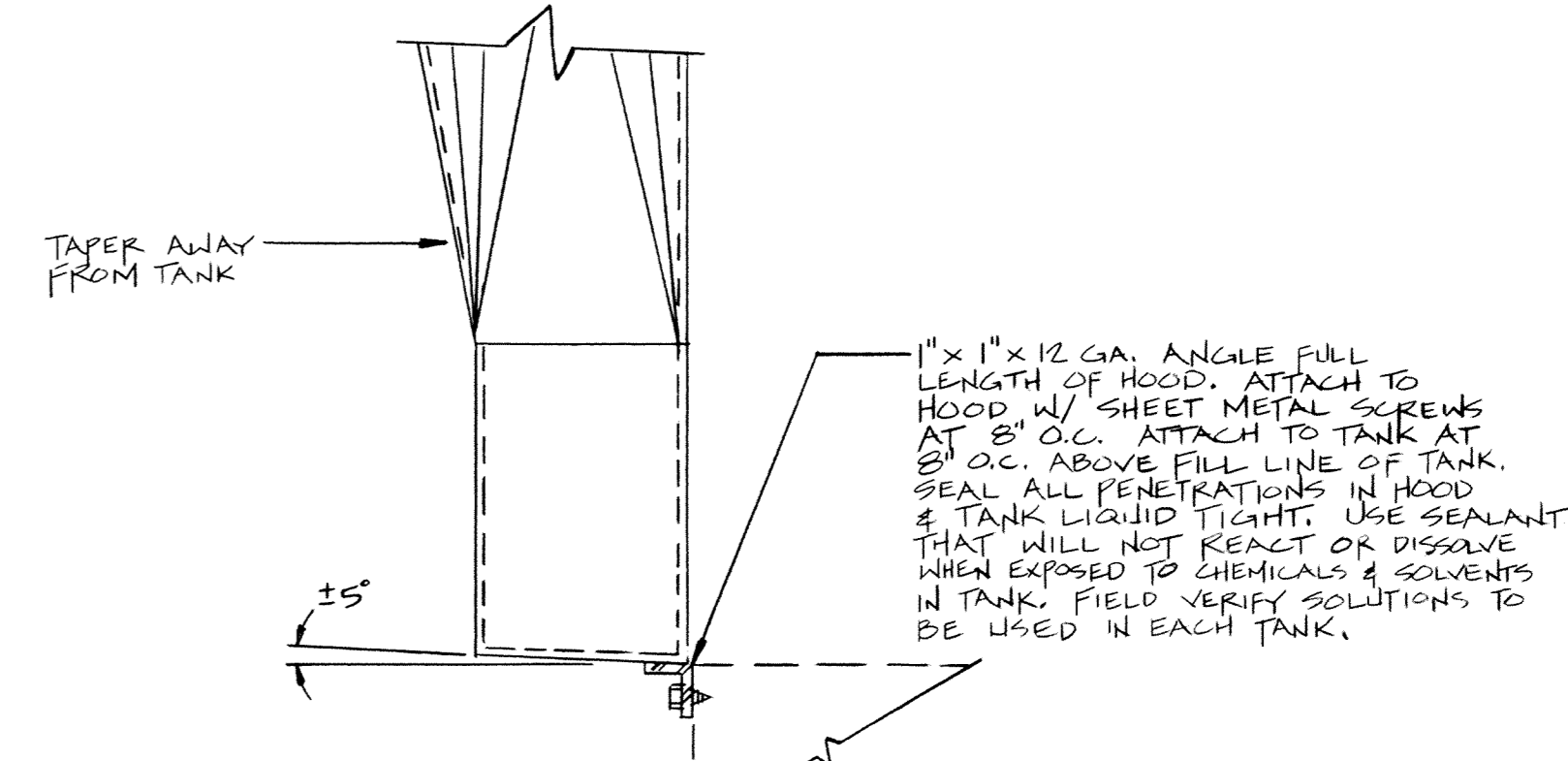
4 WALL MTD. EXHAUST FAN DETAIL
M3.2



5 UNIT HEATER PIPING SCHEMATIC
NTS
M3.2



6 SLOTTED HOOD DETAIL
NTS
M3.2



7 ATTACHMENT DETAIL
NTS
M3.2

MAKE-UP AIR UNIT SCHEDULE													
DESIG.	MFR/MDL	SERVES	CFM	ESP	FUEL	INPUT	EAT	TEMP RISE	WATER CONN.	MOTOR DATA			REMARKS
										HP	VOLTS	PHASE	
MAU-1	REZTOR/RPBE-150	CLEANING ROOM	1400	1/2"	NATL GAS	150 MBH	17°F	76°	NONE	3/4	208	1φ	FURNISH WITH INLET HOOD, DAMPERS, DUCTSTAT, FILTERS & STAINLESS STEEL HEAT EXCHANGER
MAU-2	REZTOR/RPBE-150	BEARING CLEANING ROOM	1400	1/2"	NATL GAS	150 MBH	17°F	76°	NONE	3/4	208	1φ	

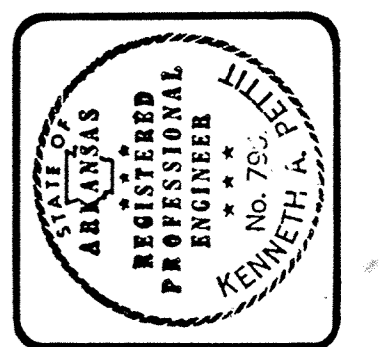
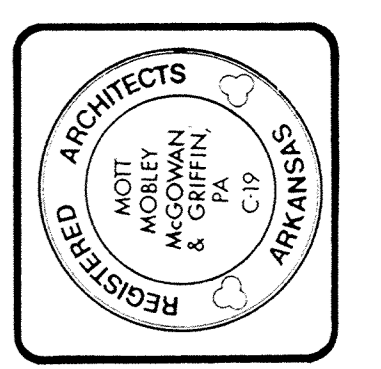
AIR DEVICE SCHEDULE						
DESIG.	MFR./MDL.	TYPE	FACE SIZE	FINISH	ACCESSORIES	REMARKS
SR-1	BARB-AIRE/CHA	SUPPLY REGISTER	AS NOTED	STANDARD OFF-WHITE	VOLUME CONTROL & AIR EXTRACTOR	FURNISH WITH ADJUSTABLE GA CORE
RA-1	BARB-AIRE/CHK	RETURN REGISTER	AS NOTED	STANDARD OFF-WHITE	VOLUME CONTROL	
ER-1	BARB-AIRE/TXE	EXHAUST REGISTER	AS NOTED	STANDARD OFF-WHITE	VOLUME CONTROL	
DG-1	BARB-AIRE/CDV	DOOR GRILLE	AS NOTED	STANDARD OFF-WHITE		

EXHAUST FAN SCHEDULE														
DESIG.	MFR/MDL	SERVES	TYPE	FAN DATA					MOTOR DATA				REMARKS	
				CFM	S.P.	RPM	DRIVE	TYPE	DIA.	RPM	BHP	HP		VOLT/PH
EF-1	COOK/ACWB 135 N 5B	CLEANING ROOM HOODS	WALL MTD CENTRIF.	1410	1/4"	1560	BELT	CENTRIF.	13 1/2"	1750 MAX.	.51	1/2	208/1φ	PROVIDE DISCONNECT SWITCH, BACKDRAFT DAMPER, BIRD-SCREEN & SEALTIGHT CONDUIT.
EF-2	COOK/ACWB 150 N 6B	BEARING CLEANING RM. HOODS	WALL MTD CENTRIF.	1685	1/4"	1390	BELT	CENTRIF.	15"	1750 MAX.	.60	3/4	208/1φ	PROVIDE DISCONNECT SWITCH, BACKDRAFT DAMPER, BIRD-SCREEN & SEALTIGHT CONDUIT.
EF-3	COOK/ACE-B 120C2B	NEW TOILET	ROOF MTD. CENTRIF.	350	3/8"	932	BELT	CENTRIF.	12"	1750 MAX.	.04	1/6	120/1φ	PROVIDE DISCONNECT SWITCH, BACKDRAFT DAMPER, BIRD-SCREEN & SEALTIGHT CONDUIT.
SF-1	COOK/SWB 30S0B	NEW ADDITION	WALL MTD PRE-FILTER	7000	1/4"	620	BELT	PROP.	30"	1750 MAX.	.86 MAX.	3/4	208/1φ	PROVIDE REVERSED VENTURI FOR SUPPLY APPLICATION & WIRE GAUGED TO MEET OSHA REQUIREMENTS.

NOTE: FURNISH EF-1 & 2 WITH HERSBITZ COATING ON ALL SURFACES EXPOSED TO THE AIR STREAM.

UNIT HEATER SCHEDULE													
DESIG.	MFR/MDL	TYPE	CFM	GPM	CAPACITY	EWT	LWT	EAT	PD	MOTOR DATA			REMARKS
										HP	VOLT	PHASE	
UH-1	REZTOR 12ERB	HORIZ. HYDRONIC	320	1.0	6.5	160°	140°	60°	.02	5 WATTS	120	1φ	15' THROW
UH-2	REZTOR 60ER12	HORIZ. HYDRONIC	1200	3.0	30.0	160°	140°	60°	.13	1/2	120	1φ	40' THROW
UH-3	REZTOR 60ER12	HORIZ. HYDRONIC	1200	3.0	30.0	160°	140°	60°	.13	1/2	120	1φ	40' THROW

MM MG
Mott Mobley McGowan & Griffin, P.A.: Architects
302 North Sixth Street
Fort Smith, Arkansas 72901



CONTRACT NO. DAHA03-87-D-0011 / 8D0Z
PROJECT NO. HKRZ - 001274
ADAL ENGINE I & R SHOP
AIR NATIONAL GUARD TRAINING FACILITY
MUNICIPAL AIRPORT - FT. SMITH, ARKANSAS

DETAILS & SCHEDULES - HVAC

Revisions	1370A	M3.2
Plan Number	11-2-88	
Date		