

CONTRACT NO. DAH408-87-0-0011 / 800Z

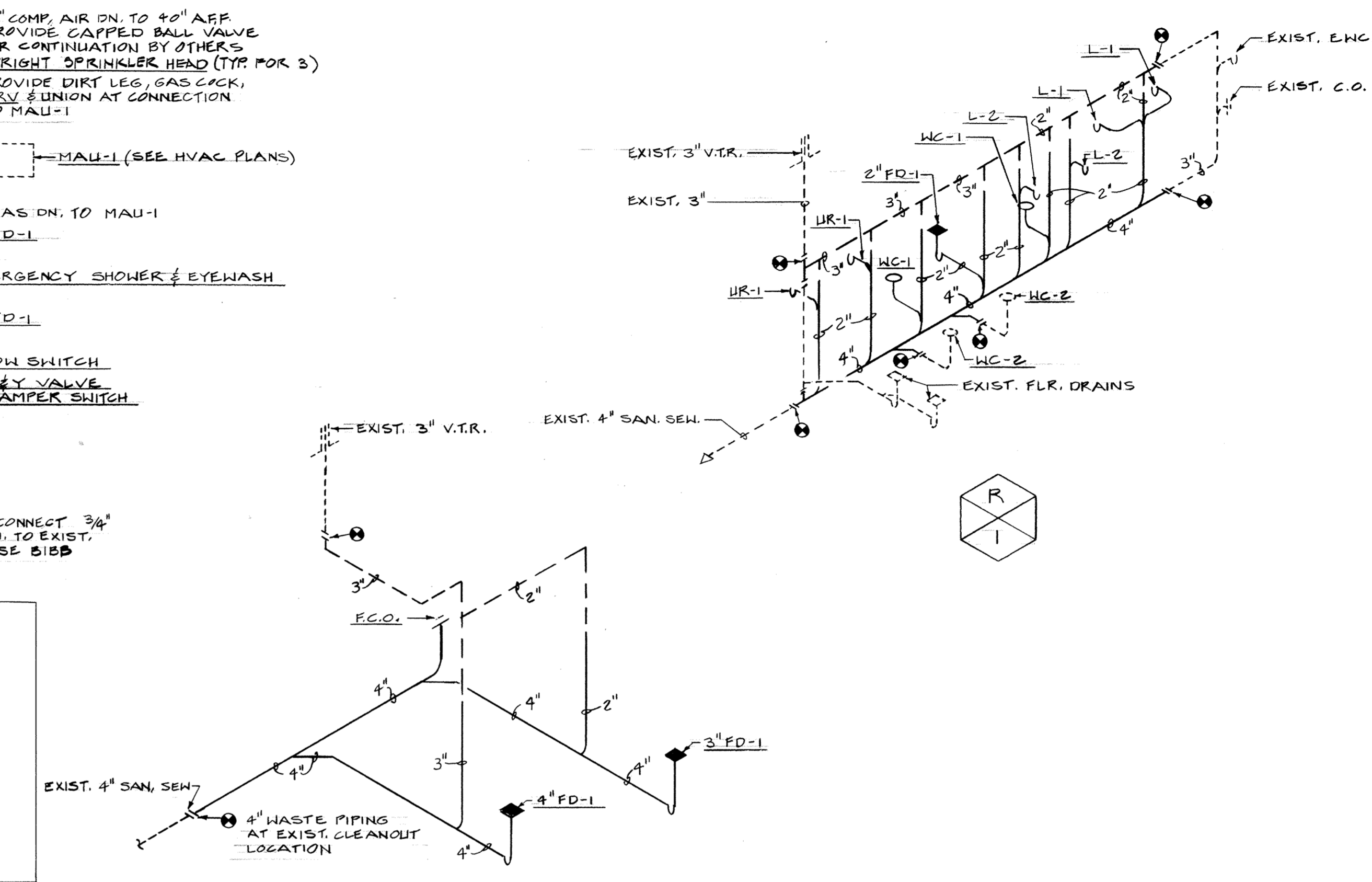
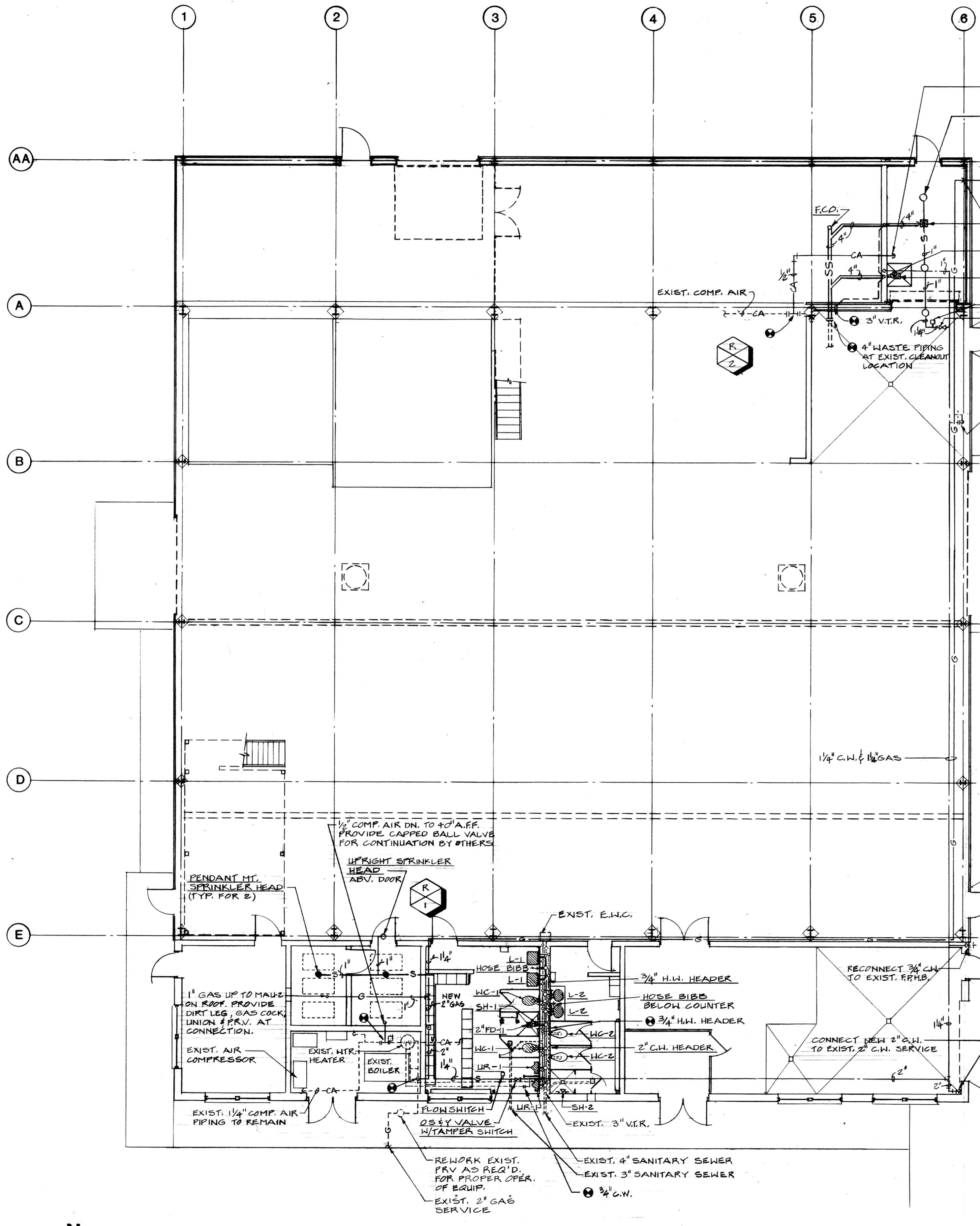
PROJECT NO. HKRZ - 001274

ADAL ENGINE I & R SHOP

AIR NATIONAL GUARD TRAINING FACILITY
MUNICIPAL AIRPORT - FT. SMITH, ARKANSAS

FLOOR PLAN
- PLUMBING

Revisions
1370A
Plan Number
11-2-88
Date
M2.1
Of



PLUMBING GENERAL NOTES

- HOT AND COLD WATER SUPPLIES TO FIXTURES SHALL BE AS FOLLOWS UNLESS SHOWN OR NOTED OTHERWISE:
 WATER CLOSET 1-1/4"
 URINAL 1-1/4"
 LAVATORY 1/2"
 SHOWER 1/2"
 HOSE BIBB 3/4"
- PROVIDE AIR CHAMBERS ON ALL HOT AND COLD WATER SUPPLIES, TO AND FOR EACH FIXTURE, THE SAME DIAMETER AS THE SUPPLY AND TWELVE (12) INCHES LONG. SEE GENERAL NOTE NUMBER ONE (1).
- CUT WALLS, FLOORS, OR CEILINGS AS REQUIRED TO INSTALL NEW PIPING. ALL FURRING AND REPAIRING SHALL BE BY THE GENERAL CONTRACTOR.
- REMOVE ALL EXISTING PIPING WHICH IS DEEMED INOPERABLE AS A RESULT OF THIS CONTRACT UNLESS SHOWN OR NOTED OTHERWISE.
- THE CONTRACTOR SHALL, PRIOR TO THE START OF ANY WORK UNDER THIS CONTRACT, JOB SITE VERIFY SIZE, ELEVATION, LOCATION, ETC., OF ANY EXISTING PIPING NOTED, SHOWN OR IMPLIED TO WHICH NEW PIPING IS RELATED OR CONNECTED.
- TO MINIMIZE DISRUPTION OF THE OWNER'S ON-GOING DAILY ACTIVITIES WITHIN THE EXISTING BUILDING AND ON THE GROUNDS, THE CONTRACTOR SHALL SCHEDULE HIS WORK AS REQUIRED TO MAINTAIN EXISTING SERVICES DURING CONSTRUCTION AND CLOSELY COORDINATE ANY OUTAGES WITH AND TO THE OWNER'S REQUIREMENTS.
- ALL EQUIPMENT WHICH IS TO BE REMOVED SHALL BECOME THE PROPERTY OF THE OWNER AND SHALL BE DELIVERED TO STORAGE ON SITE AS DIRECTED BY THE OWNER. ALL PIPING SHALL BECOME THE PROPERTY OF THE CONTRACTOR AND REMOVED FROM JOB SITE BY SAME.
- CLOSE COORDINATION AND COOPERATION SHALL BE MAINTAINED BETWEEN THE TRADES WITH REGARD TO THE PLUMBING, HVAC, AND ELECTRICAL PLANS.
- SPRINKLER SYSTEM SHALL CONSIST OF: TYPE "L" COPPER PIPING (SAME AS SPECIFIED FOR COLD WATER SYSTEM); O.S.&Y. VALVES UL/FM APPROVED, CLASS 200, EQUAL TO CRANE NUMBER 459, JENKINS OR WALWORTH; FIRE ALARM FLOW SWITCHES AND TAMPER SWITCHES EQUAL TO POTTER-ROEMER, INC. #6200 AND #6220, RESPECTIVELY, VIKING OR GRINNELL, (THE WIRING OF THE ALARMS AND CONNECTION TO THE FIRE ALARM SYSTEM SHALL BE BY THE ELECTRICAL CONTRACTOR); SPRINKLER HEADS EQUAL TO POTTER-ROEMER, INC. #6110-C (UPRIGHT) AND #6120-C (PENDANT); VIKING OR GRINNELL, AS INDICATED ON PLANS, WITH CHROME PLATED ESCUTCHEONS FOR PENDANT MOUNTED HEADS.
- FLOOR DRAIN (FD-1) SHALL BE EQUAL TO BURN #EN-415-B 1/2" N.B. STRAINER AS SIZED ON PLAN.

PLUMBING RISER DIAGRAMS

NTS

PLUMBING LEGEND

SYMBOL	DESCRIPTION	REMARKS
---	COLD, HOT & HOT WATER RETURN PIPING	
-V- / -A- / -U-	GAS, AIR & VACUUM PIPING	
OX	OXYGEN PIPING	
SS	INDIRECT DRAIN, STORM SEWER & SANITARY SEWER PIPING	PIPING ABOVE FLOOR UNLESS SHOWN OR NOTED OTHERWISE
S	FIRE PROTECTION & SPRINKLER PIPING	
-C-	PENDANT, UPRIGHT & SIDEWALL SPRINKLER HEADS	
-V-	VENT PIPING	
-AW-	ACID WASTE & VENT PIPING	
SS	SANITARY SEWER (WASTE) PIPING	
SS	STORM SEWER PIPING	
-D-	INDIRECT DRAIN PIPING	PIPING BELOW FLOOR OR GRADE UNLESS SHOWN OR NOTED OTHERWISE
-W-	DOMESTIC WATER PIPING	
-D-	DESIGNATED PIPING (CW, HW, HWR, G.A.V., ETC.)	
SV	SHUT-OFF VALVE	GATE VALVE UNLESS NOTED
GC	GAS COCK	UNLESS NOTED OTHERWISE
U	UNION	
CW	COLD WATER	
HW	HOT WATER	
HWR	HOT WATER RETURN	
GV	GATE VALVE	
FC	FIRE HOSE CABINET	
PRV	PRESSURE REDUCING VALVE	
CO	CLEANOUT	
EXT.CO	EXTERIOR CLEANOUT	SEE DETAIL
FCO	FLOOR CLEANOUT	
WCO	WALL CLEANOUT	
VTR	VENT THRU ROOF	SEE GENERAL NOTES
SV	SHUT-OFF VALVE IN BOX	
RD	RISER DIAGRAM	LOCATION SHEET NUMBER
RD	RISER DIAGRAM	PARTIAL PLAN NUMBER
PP	PARTIAL PLAN	LOCATION SHEET NUMBER
PP	PARTIAL PLAN	PARTIAL PLAN NUMBER
CE	CONNECT TO EXISTING	

FLOOR PLAN - PLUMBING

1/8" = 1'-0"

