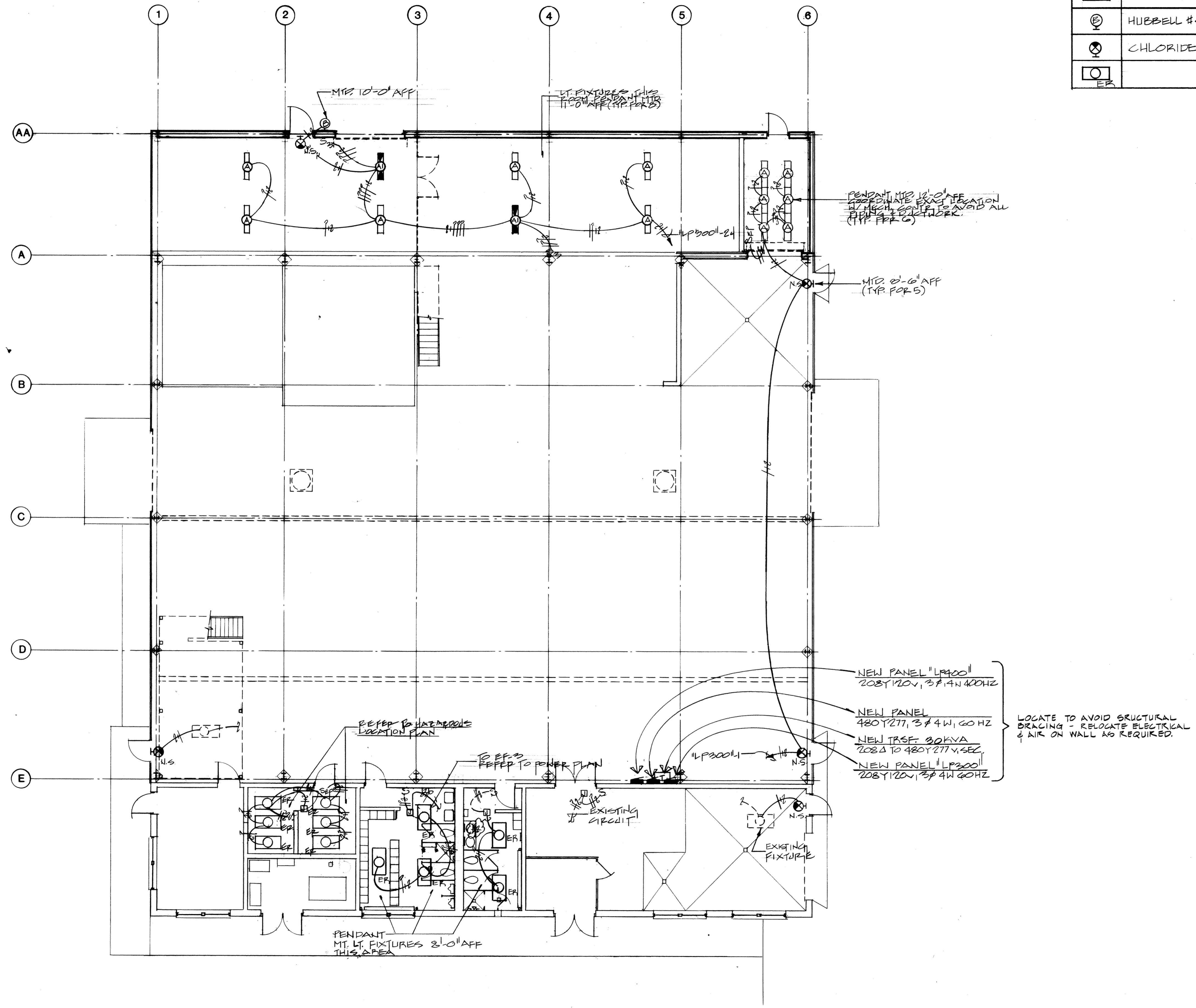
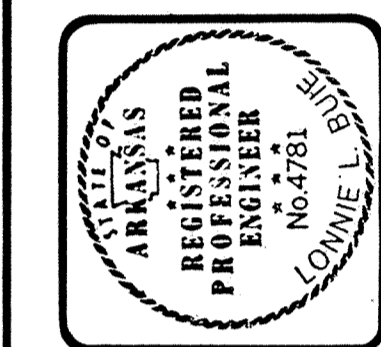
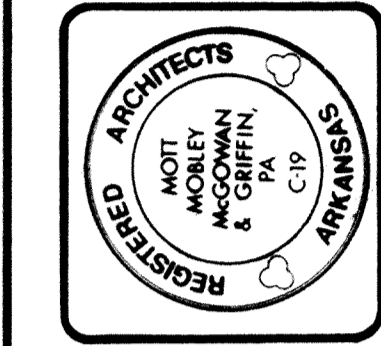


FIXTURE SCHEDULE					
TYPE	MANUFACTURER	LAMP	REMARKS	VOL	EQUAL MF.
Ⓐ	DAYBRITE #IA240-ESB	2-F40 CW/W/M	4' FLUORESCENT W/REFLECTOR PENDANT MTD	120	LITHONIA METALLUX
Ⓑ	DAYBRITE #EIA240-ESB	2-F40 CW/W/M	4' FLUORESCENT W/REFLECTOR PENDANT MTD W/EMERG. BAT. PACK	120	LITHONIA METALLUX
Ⓒ	HUBBELL #6500Z	2-150W PAR-38	2-LAMP HOLDER W/PHOTO CELL	120	AMERICAN ELECTRIC GEN. ELECTRIC
Ⓓ	CHLORIDE #WPLSPRN-TC	W/UNIT	NON-SWITCHED SELF POW'D EXIT	120	EMERGI-LITE EXIDE
Ⓔ	EXISTING FLUORESCENT LT. FIXTURE - RE-LOCATED				



FLOOR PLAN - LIGHTING
 1/8" = 1'-0"

MM MG
 Mott Mobley McGowan & Griffin, P.A. - Architects
 Fort Smith, Arkansas 72901
 302 North Sixth Street



CONTRACT NO. DAKH08-87-D-0011 / 800Z
 PROJECT NO. HKRZ - 001274
ADAL ENGINE I & R SHOP
 AIR NATIONAL GUARD TRAINING FACILITY
 MUNICIPAL AIRPORT - FT. SMITH, ARKANSAS

FLOOR PLAN - LIGHTING

Revisions	
1370A	
Plan Number	E2.1
Date	11-2-88