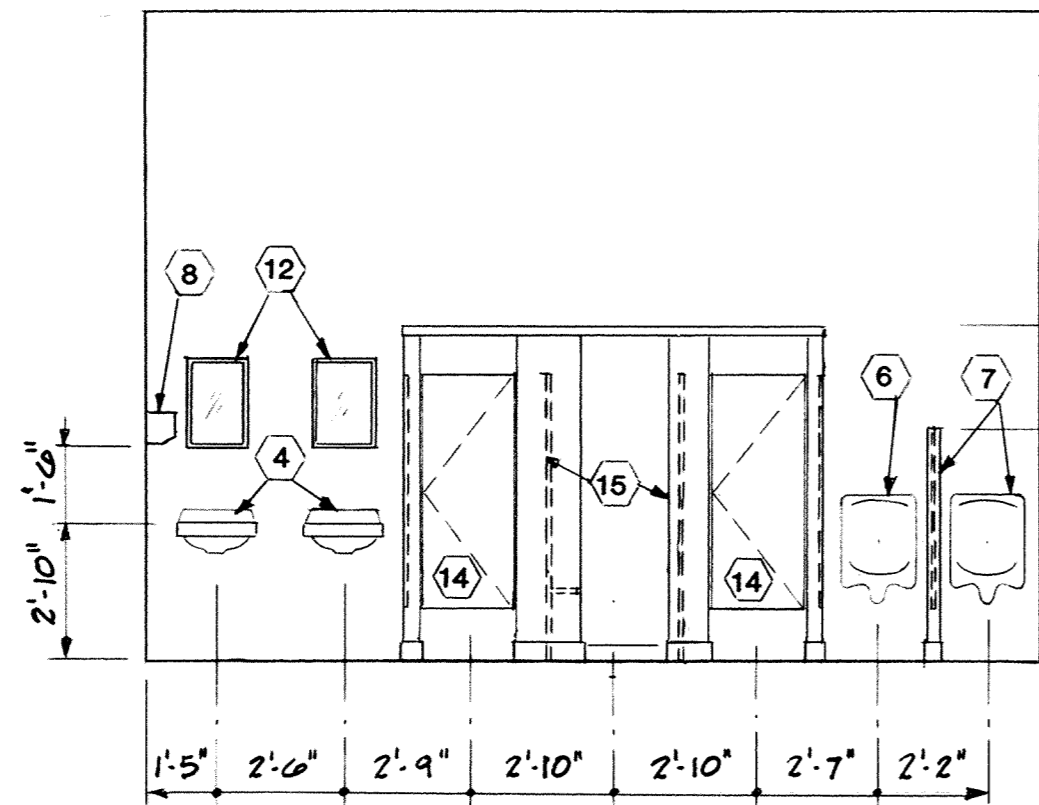
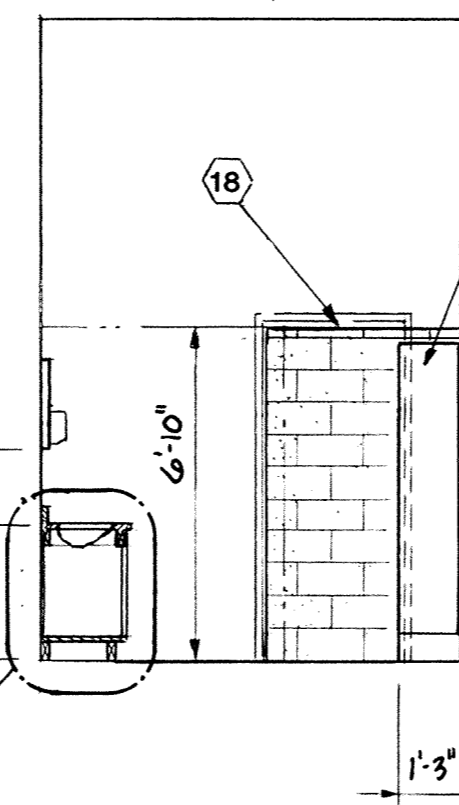


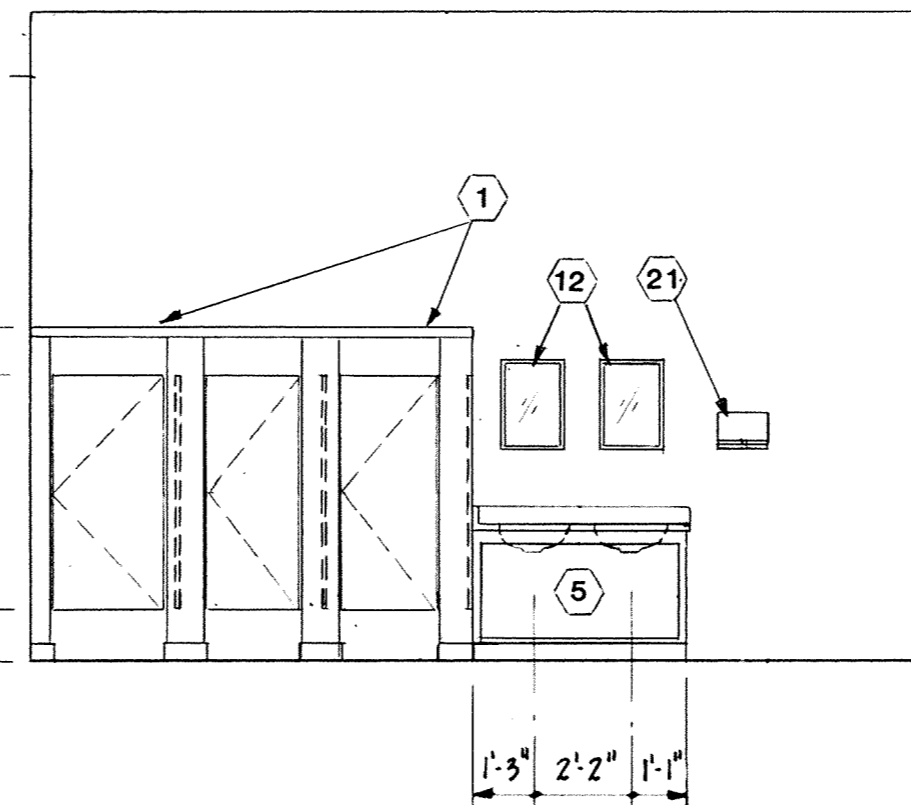
**ELEVATION**  
1/4" = 1'-0"



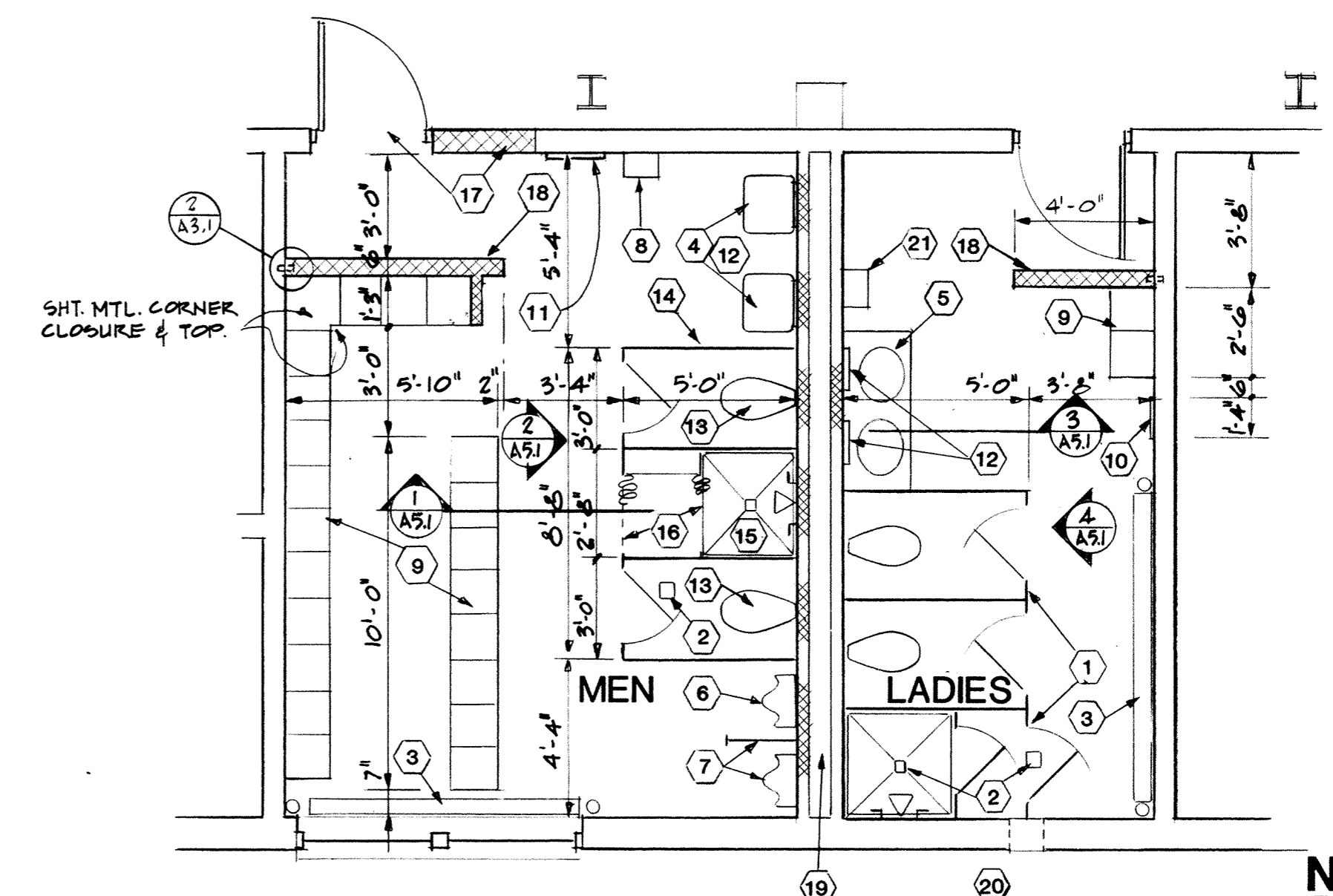
**ELEVATION**  
1/4" = 1'-0"



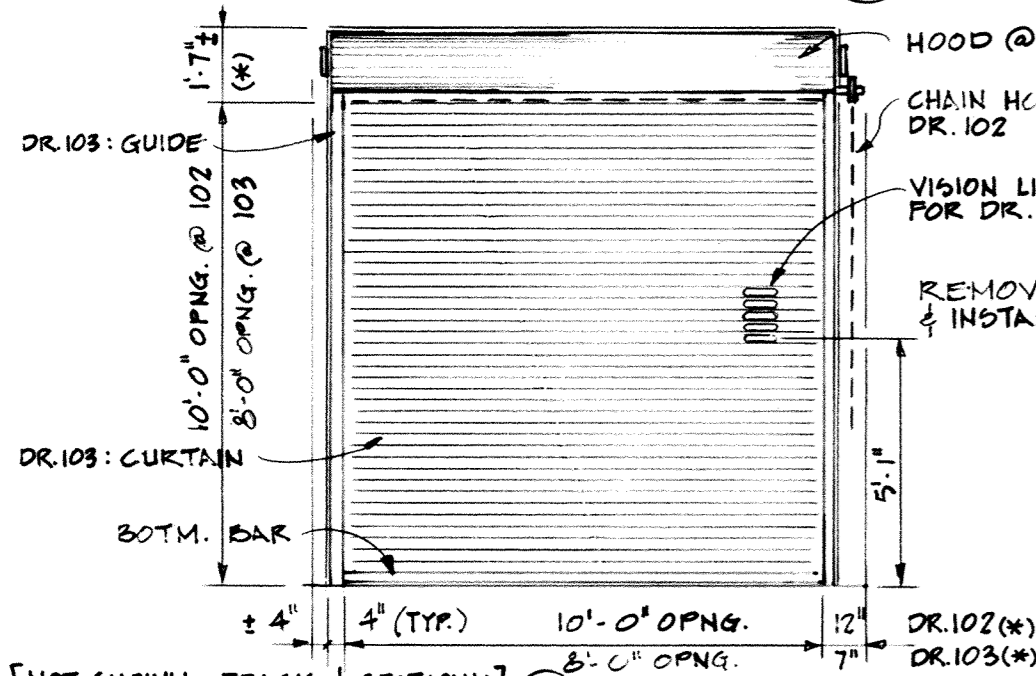
**ELEVATION**  
1/4" = 1'-0"



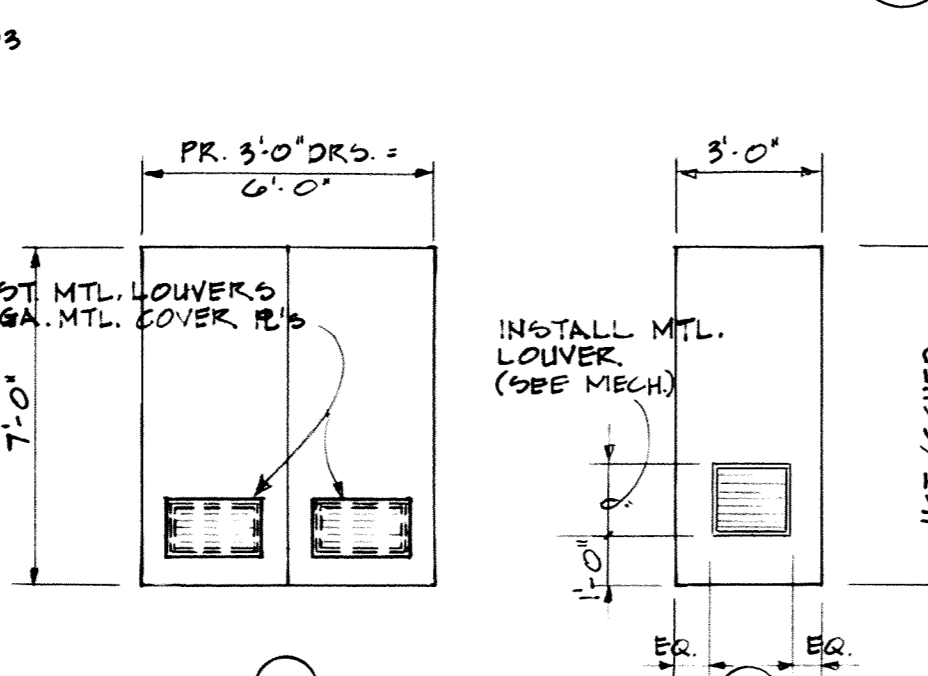
**ELEVATION**  
1/4" = 1'-0"



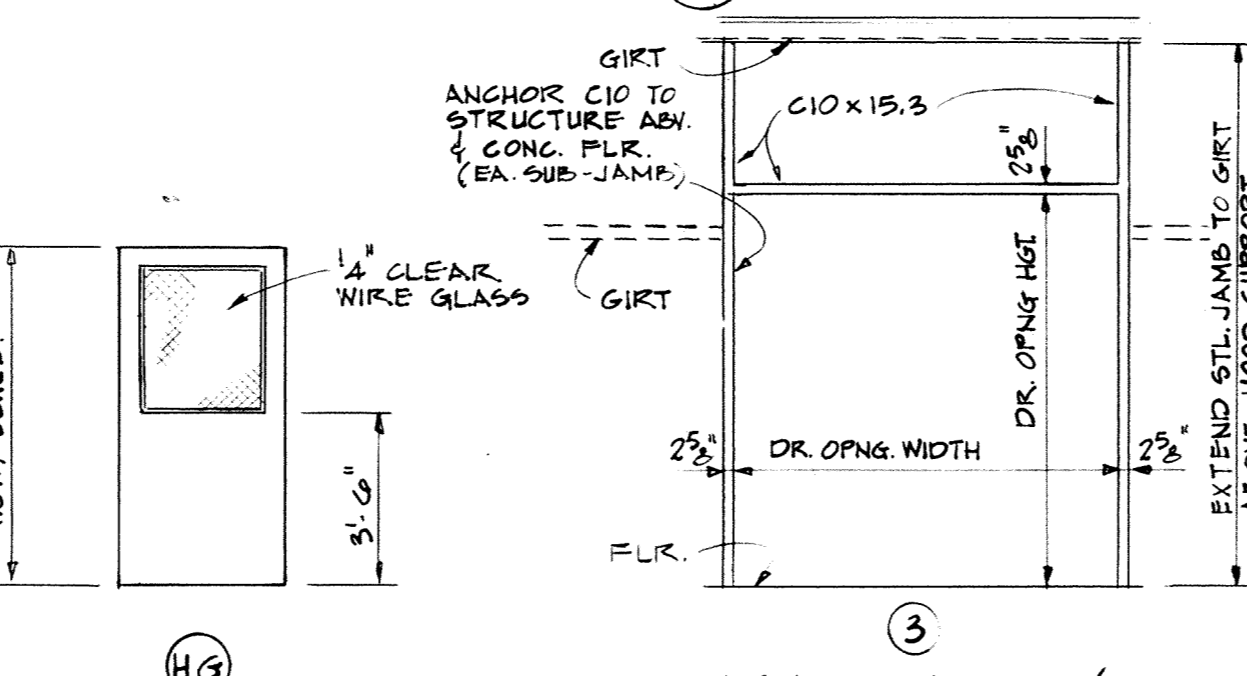
**LATRINE PLAN**  
1/4" = 1'-0"



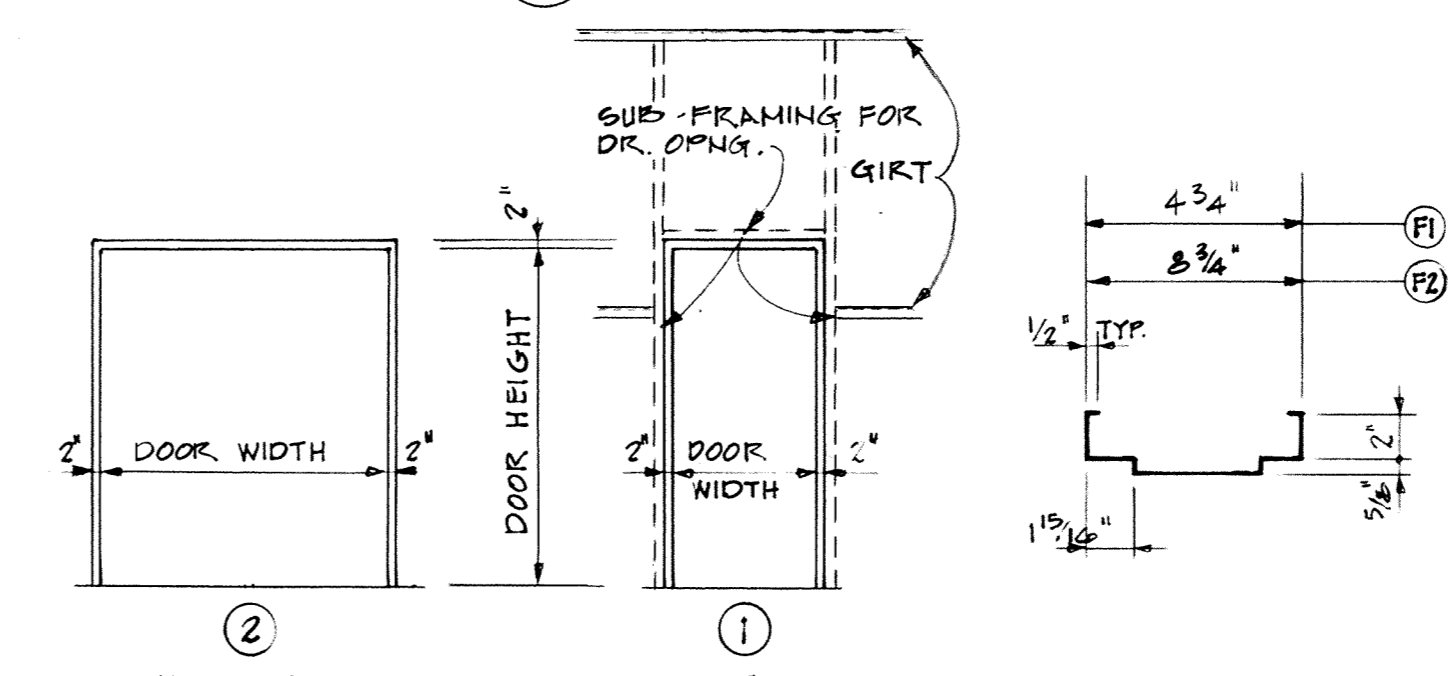
**ROLLING DOOR ELEV.**



**HOLLOW MTL. DOOR ELEVS.**

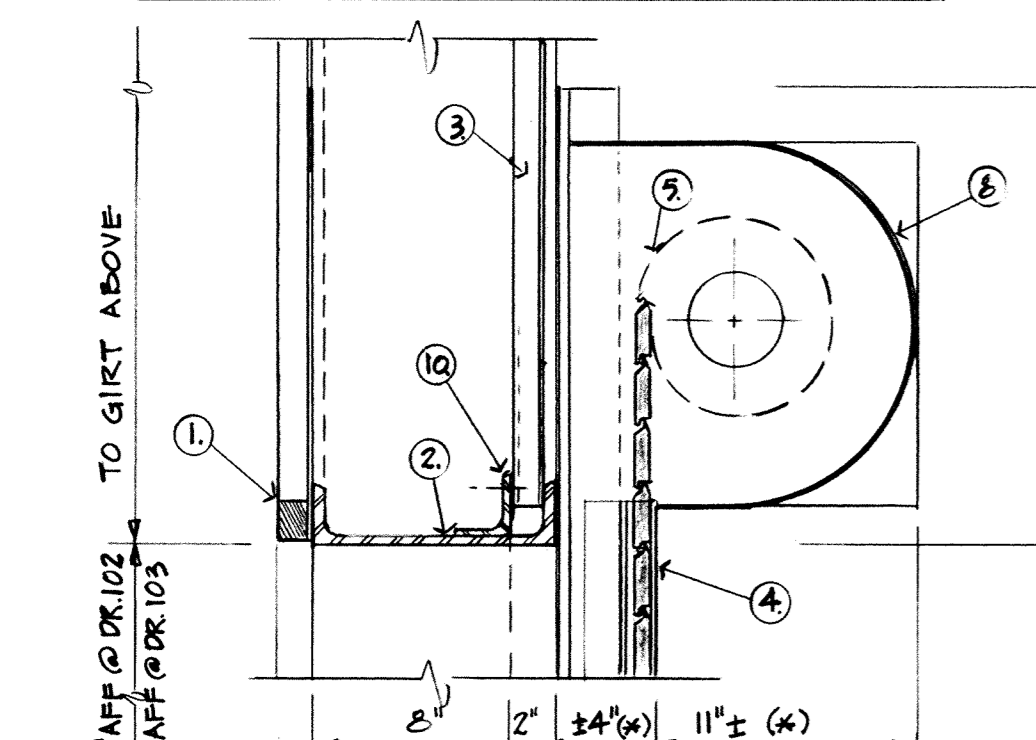


**HOLLOW MTL. FRAME ELEVS.**

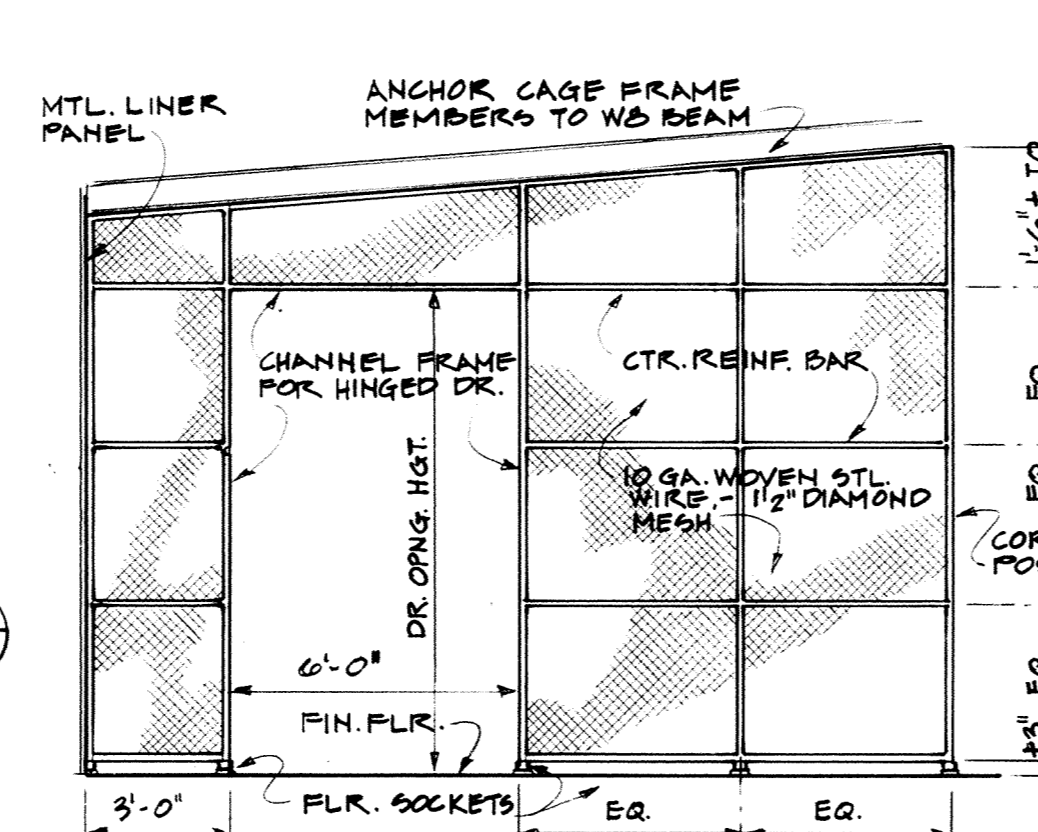


**HOLLOW MTL. FRAME TYPES**

- LATRINE KEYNOTES**
- EXIST. TOILET PARTITIONS, WC AND SHOWER STALL TO REMAIN.
  - EXIST. FLOOR DRAIN TO REMAIN.
  - EXIST. FIN-TUBE CONVECTOR TO REMAIN.
  - EXIST. LAVATORY, RELOCATED BY CONTR.; PROVIDE NEW TRAP & TRIM AS REQUIRED.
  - NEW LAVATORY/CABINET - SEE 6 AS.1
  - NEW URINAL TO MATCH EXIST. FIXTURE.
  - EXIST. URINAL, RELOCATED BY CONTR.; INSTALL NEW SCREEN.
  - EXIST. PAPER-TOWEL DISPENSER RELOCATED TO MEN'S LATRINE, BOTTOM AT 4' AFF.
  - EXIST. 15" SQ. TWO-TIER LOCKERS WITH 6" BASE, RELOCATED.
  - EXIST. 16" x 5" MIRROR, BOTTOM AT 1' AFF, RELOCATED BY CONTR.
  - NEW 20" x 5" MIRROR, BOTTOM AT 1' AFF.
  - NEW 16" x 22" MIRROR, TOP AT 6'-0" AFF.
  - NEW WC.
  - NEW TOILET PARTITIONS - TYPE TO MATCH EXIST.
  - NEW SHOWER STALL: FILL & PATCH EXIST. DEPRESSION AS REQUIRED TO INSTALL NEW SHOWER RECEPTOR.
  - SHOWER CURTAIN AND ROD.
  - REMOVE A PAIR OF METAL DOORS AND FRAME. INSTALL EXIST. 3' x 7' METAL DOOR AND NEW FRAME; FILL OPENING WITH LMC BLK. TO MATCH ADJACENT FINISHES.
  - INSTALL 6'-10" SCREEN OF 6" LMC BLK; ANCHOR TO EXIST. WALL @ 8" OC WITH WALL TIES. 1 1/2" SOLID CAP BLK.
  - REPLACE LMC BLK. AFTER NEW AND RELOCATED PLUMBING IS INSTALLED.
  - EXIST. EXHAUST FAN, CENTER LINE AT 11' AFF.
  - NEW PAPER-TOWEL DISPENSER TO MATCH EXIST. BOTTOM AT 4'.



**CAGE DOOR ELEV.**

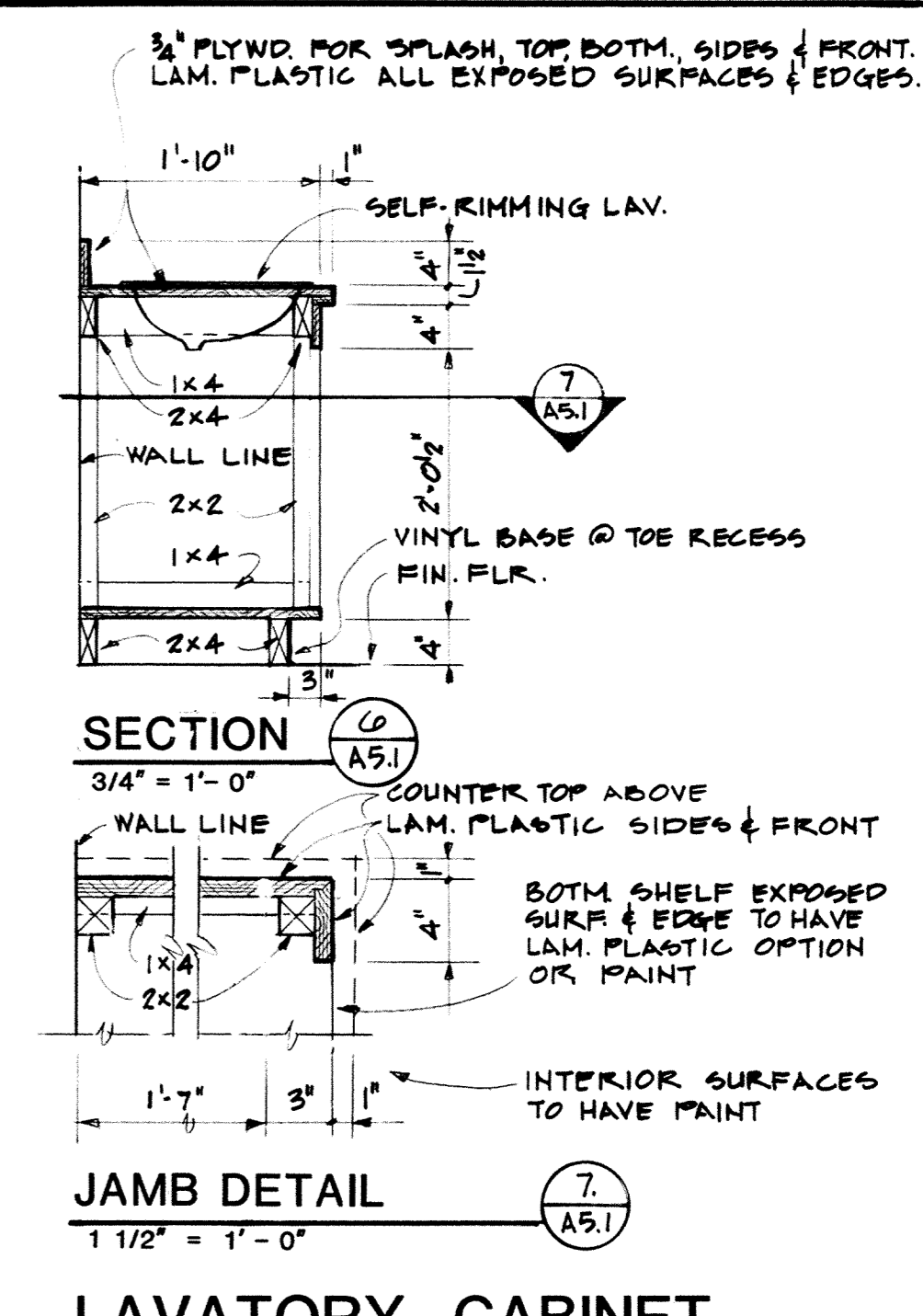
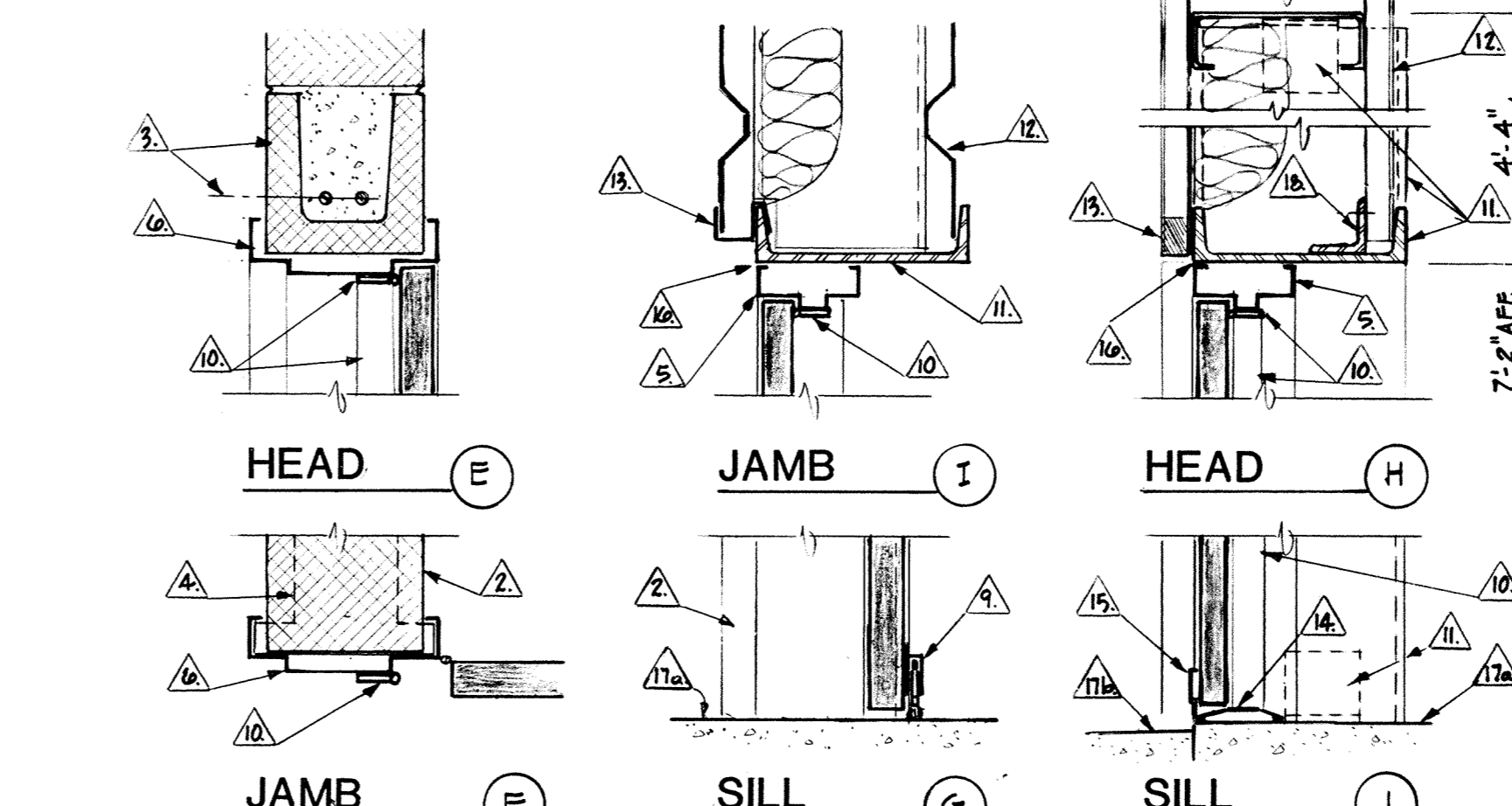
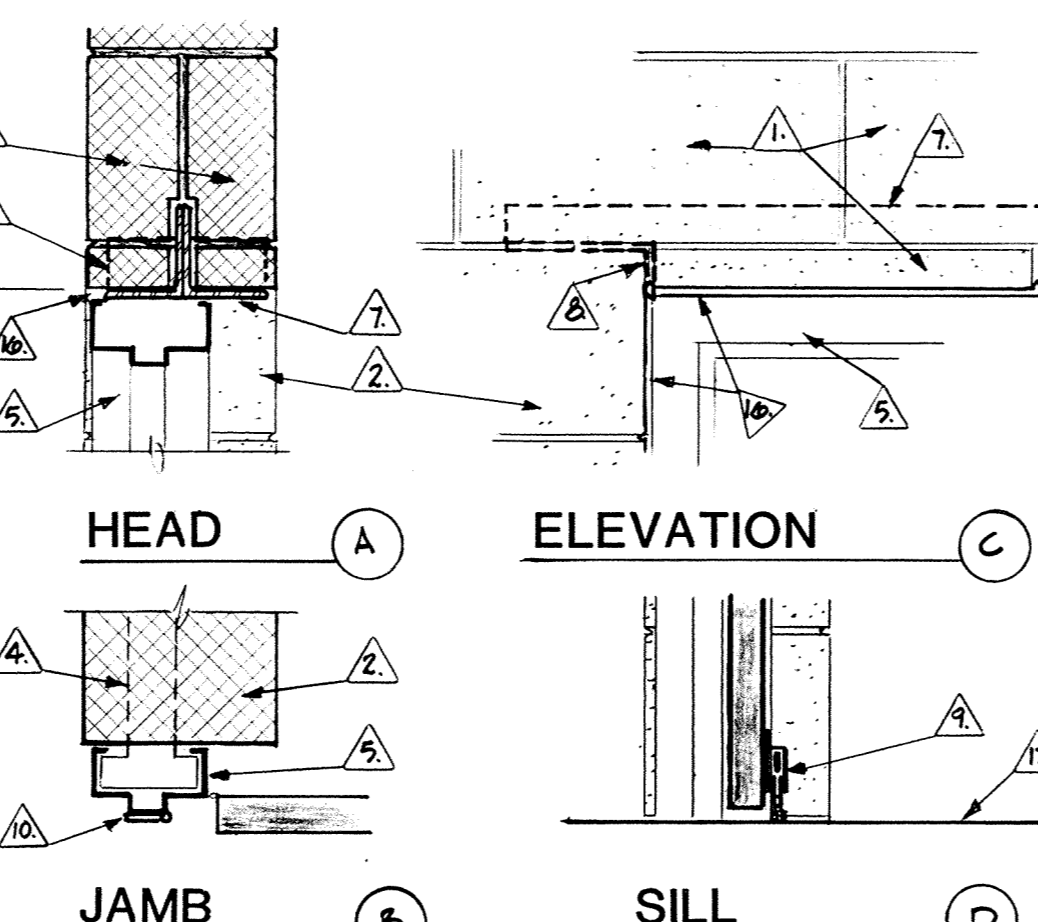


**CAGE FRAME ELEVATION**

- H.M. DOOR DETAIL KEYNOTES**
- 4" LMC BLK - CUT AS REQUIRED FOR LINTEL ANGLES.
  - 4" LMC BLK - GENERALLY, WHERE EXIST. H.M. FRAMES ARE REMOVED TO CHANGE DOOR OPENING SIZE, TOOTH-IN NEW BLOCK TO MATCH EXIST. ADJACENT FINISHES AND COURSING.
  - 8" LMC LINTEL BLK W/2" S AND BOND-BEAM MORTAR FILL.
  - T-ANCHOR, AS REQUIRED BY FRAME TYPE.
  - FRAME TYPE 'F1' - FILL JAMB WITH GROUT/MORTAR AT MASONRY WALLS.
  - FRAME TYPE 'F2' - FILL JAMB WITH GROUT.
  - STEEL LINTEL - 2 ANGLES 4" x 3-1/2" x 5/16" x DOOR WIDTH + 12"; WELD TO BEARING ANGLE.
  - BEARING ANGLE - 6" x 2" x 5/16" x 6-1/2" L.
  - AUTOMATIC DOOR SEAL (WHERE SCHEDULED).
  - WEATHERSTRIPPING ON FRAME HEAD AND JAMB (WHERE SCHEDULED).
  - SUB-FRAMING FOR DOOR 101 = C10 x 15.3, ANCHORED AT FLOOR AND AT GIRT ABOVE WITH 3-1/2" x 3-1/2" CLIP ANGLE @ 3-1/2" L.
  - METAL LINER PANEL, INTERIOR.
  - METAL PANELS, EXTERIOR (INSUL. WITH VAPOR BARRIER ON INTERIOR SIDE); RUBBER CLOSURE AT HEAD AND FLASHING TRIM AT JAMB.
  - ALUMINUM THRESHOLD, 1/2" x 4" x DOOR WIDTH - SET IN SEALANT AND ANCHOR WITH SCREWS AND EXPANSION SHIELDS.
  - WEATHERSTRIPPING AT BOTTOM OF DOOR 101.
  - SEALANT AT FRAME PERIMETER (BOTH SIDES, AT DOOR 101).
  - FINISH FLOOR.
  - CONCRETE SIDEWALK.
  - 2-1/2" x 2-1/2" x 3/16" ANGLE WELD TO C10 @ HD. (ATTACH SIDING TO THIS)

- ROLLING DOOR KEYNOTES**
- EXIST. SIDING WITH METAL TRIM ADDED WHERE OPENING IS CUT AT DOOR 103; NEW METAL SIDING WITH RUBBER CLOSURE AT DOOR 102.
  - SUB-FRAMING FOR DOORS 102 AND 103 = C10 x 15.3 ANCHOR TO FLOOR SLAB W/ 4 x 4 CLIP x 6" L.
  - METAL LINER PANEL AT DOOR 102, EXISTING METAL SIDING AT DOOR 103.
  - ROLLING CURTAIN GUIDE WITH WINDOW BAR @ DR 103; 3" TRACK FOR DR 102.
  - ROLLING CURTAIN HAS VISION LITES IN 5 SLATS IN JAMB SIDE WITH CHAIN HOIST OPERATOR; BOTTOM VISION LITE AT 5'-11" ± AFF.
  - FLASHING TRIM.
  - 8" Z - WALL GIRT.
  - STEEL HOOD WITH BAFFLE @ DR. 103
  - 2-ANGLE BOTTOM BAR WITH INTEGRAL LOOP WEATHERSEAL.
  - 2-1/2" x 2-1/2" x 3/16" ANGLE WELD TO CLO @ HEAD (ATTACH SIDING TO THIS).
- (\*) DIMENSION AS REQUIRED BY ROLLING DOOR MFR.

**DOOR DETAILS**



**LAVATORY CABINET**  
WOMEN'S LATRINE

CONTRACT NO. DAHAG3-87-D-00117.9D02  
 PROJECT NO. HCRZ - 001274  
**ADAL ENGINE I & R SHOP**  
 AIR NATIONAL GUARD TRAINING FACILITY  
 MUNICIPAL AIRPORT - FT. SMITH, ARKANSAS  
 ARCHITECTS  
 REGISTERED ARCHITECTS  
 MOTT MOBLEY MCGOWAN & GRIFFIN, P.A.  
 302 North Sixth Street  
 Fort Smith, Arkansas 72901  
 Revisions  
 1370A  
 Plan Number  
**A5.1**  
 11-2-88  
 Date  
 Of