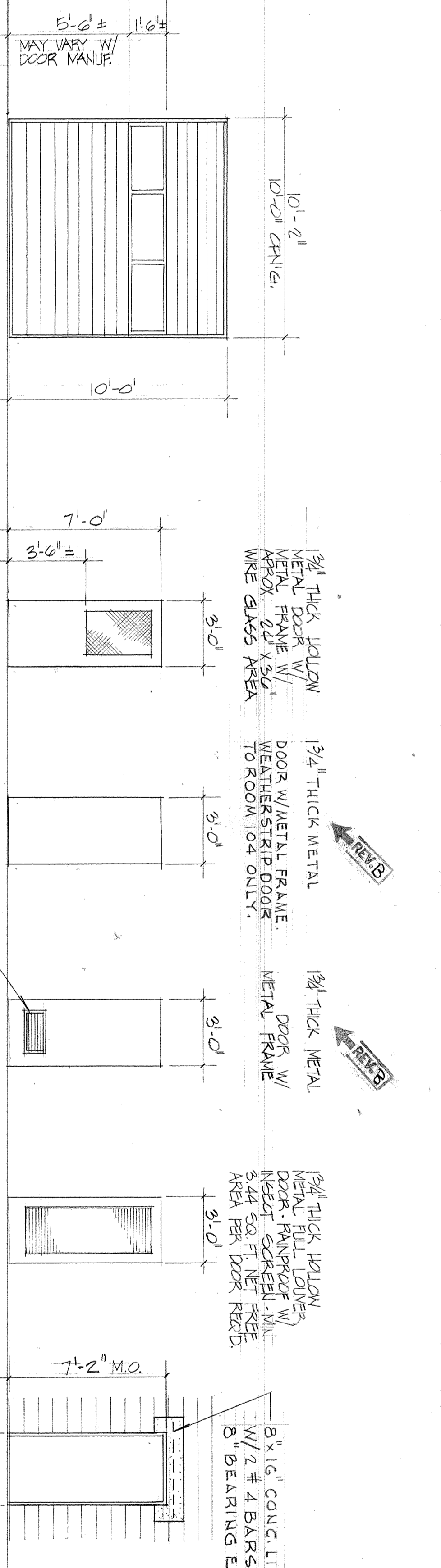


ALL STEEL SECTIONAL OVERHEAD DOORS, NON INSULATION AND STEEL BACK PANELS, 1/2" STANDARD HEADROOM TRACK, 1/2" LIFTING MECHANISM (DOORS A & B)

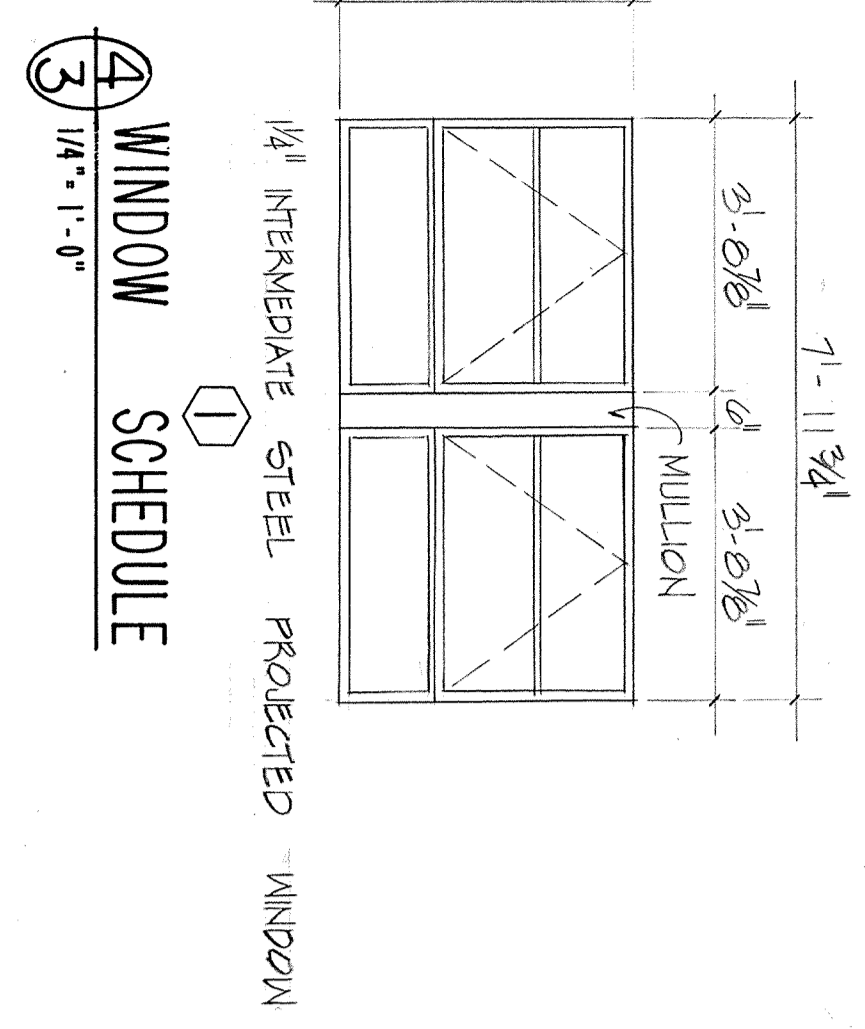
② DOOR SCHEDULE
3/16" x 1'-0"

③ MASONRY DOOR OPENING
3/16" x 1'-0"

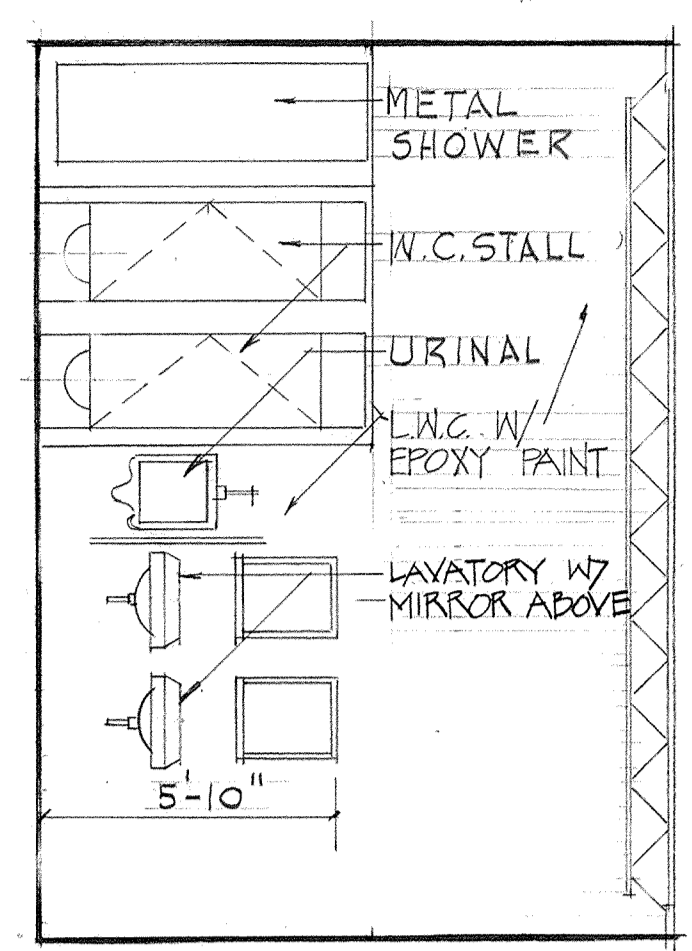


| NO. | ROOM | REMARKS |
|-----|--------------------|----------|
| 101 | SLOP AREA | FLOOR |
| 102 | OFFICE | CEILING |
| 103 | MECHANICAL ROOM | CEILING |
| 104 | BEARING INSPECTION | CEILING |
| 105 | PARTS CLEANING | CLEANING |
| 106 | LATRINE | CLEANING |
| 107 | TOOL CRIB | CLEANING |
| 108 | WELDING | CLEANING |

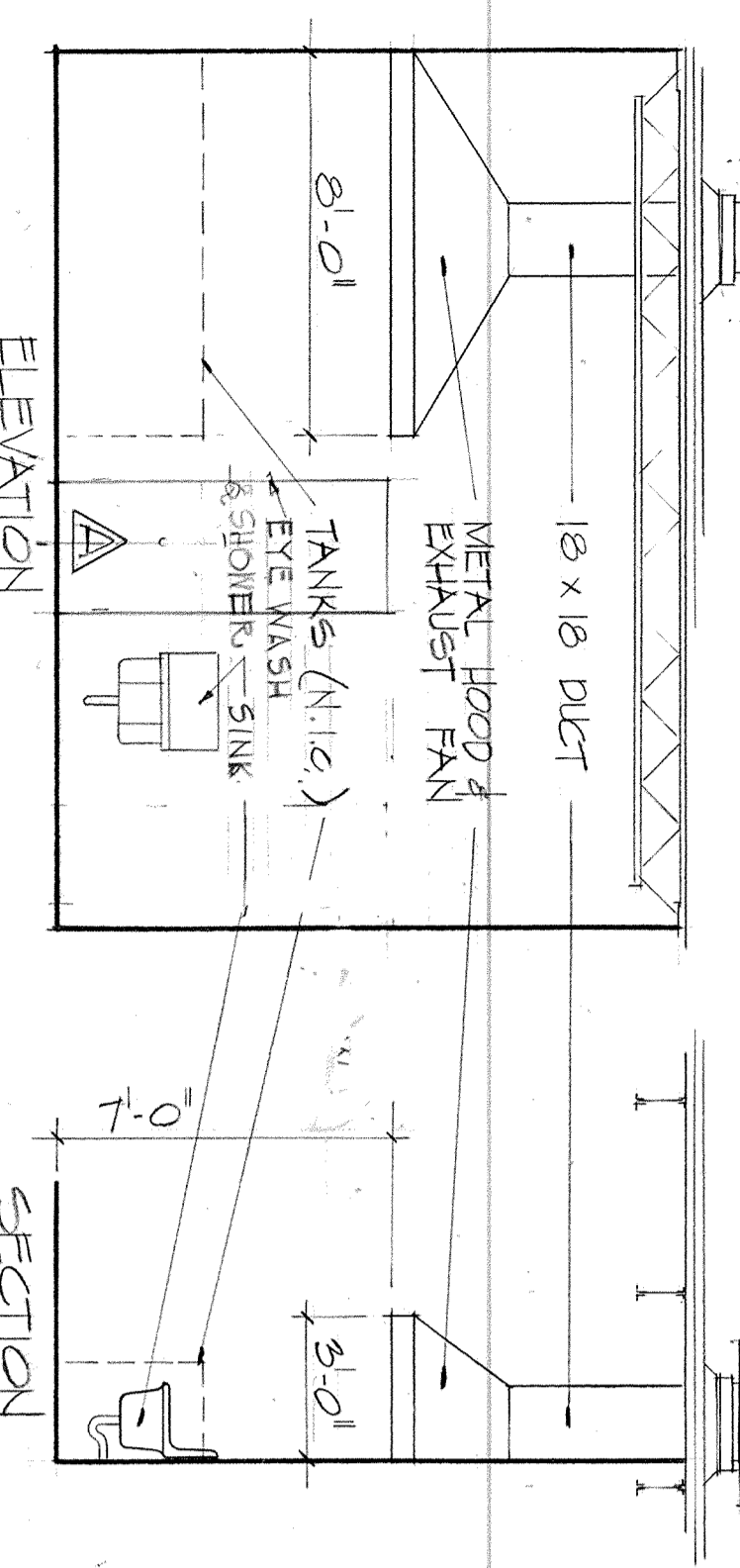
FINISH SCHEDULE



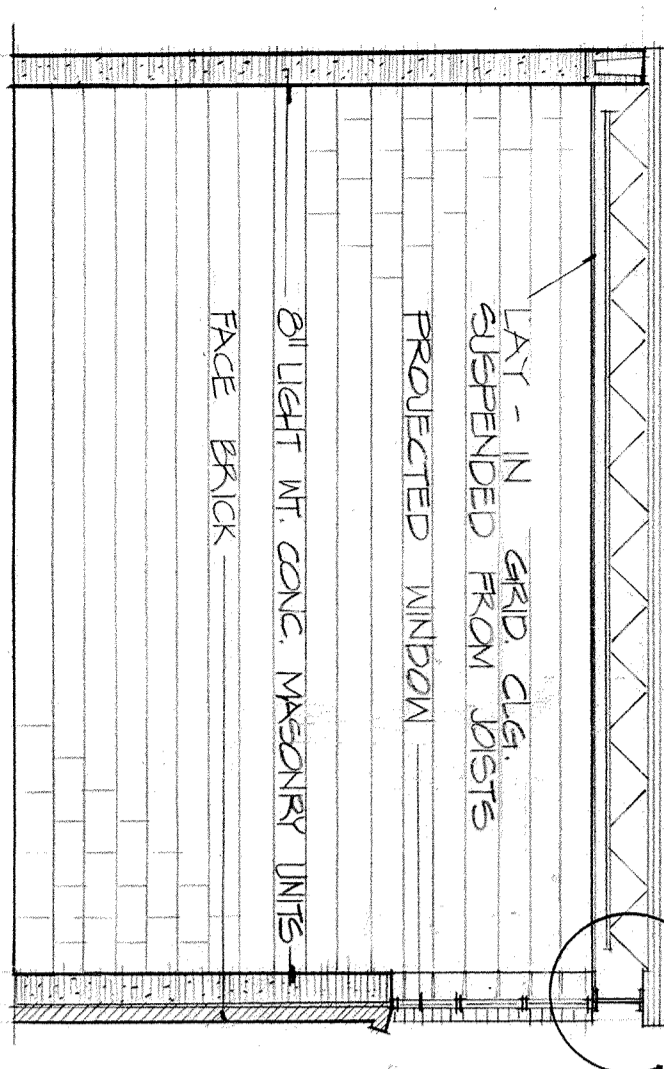
④ WINDOW SCHEDULE
3/16" x 1'-0"



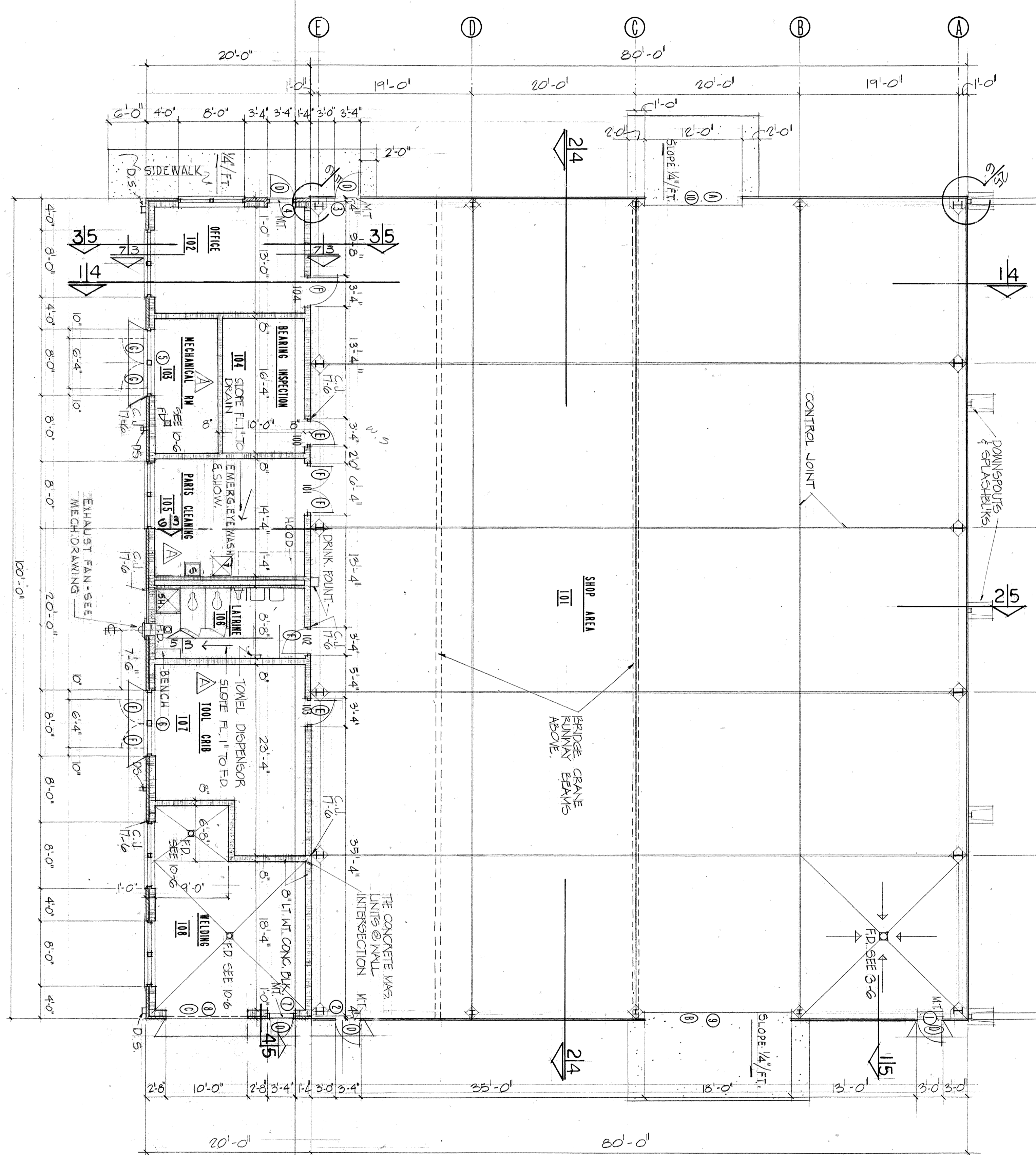
⑤ LATRINE ELEVATION 106
3/16" x 1'-0"



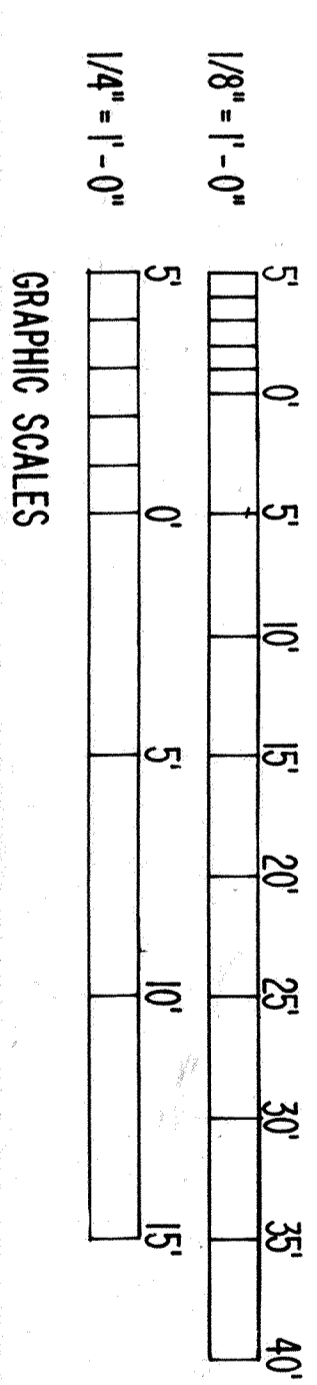
⑥ PARTS CLEANING 105
3/16" x 1'-0"



⑦ OFFICE 102
3/16" x 1'-0"



① FLOOR PLAN
3/16" x 1'-0"



MATERIAL KEY

- A DRY-N-GRID CEILING TYPE I
- B VINYL BASE
- C CONCRETE
- D LIGHT WEIGHT CONCRETE BLOCK-LWC (UNPAINTED)
- E LIGHT WEIGHT CONCRETE BLOCK-LWC-IN/EPXY PAINT
- F LIGHT WEIGHT CONCRETE BLOCK-LWC (PAINTED)
- G METAL LINER PANEL (8'-0")
- H VINYL ACCESSORIES TILE
- N ND FINISH
- O GYPSUM BOARD

DOOR LEGEND

- EXTERIOR DOORS
- DOOR A - ORNG. ②
- DOOR B - ORNG. ③
- DOOR C - ORNG. ④
- DOOR D - ORNG. ⑤
- DOOR E - ORNG. ⑥
- DOOR F - ORNG. ⑦
- INTERIOR DOORS
- DOOR G - ORNG. ⑧
- DOOR H - ORNG. ⑨
- DOOR I - ORNG. ⑩
- DOOR J - ORNG. ⑪
- DOOR K - ORNG. ⑫
- DOOR L - ORNG. ⑬
- DOOR M - ORNG. ⑭
- DOOR N - ORNG. ⑮
- DOOR O - ORNG. ⑯
- DOOR P - ORNG. ⑰
- DOOR Q - ORNG. ⑱
- DOOR R - ORNG. ⑲
- DOOR S - ORNG. ⑳
- DOOR T - ORNG. ㉑
- DOOR U - ORNG. ㉒
- DOOR V - ORNG. ㉓
- DOOR W - ORNG. ㉔
- DOOR X - ORNG. ㉕
- DOOR Y - ORNG. ㉖
- DOOR Z - ORNG. ㉗

GENERAL NOTES

1. ALL INTERIOR BLOCK WALLS SHALL BE 8" x 8" x 16" LIGHT WEIGHT CONCRETE BLOCK WITH MASONRY REIN. AT 16" O.C. VERTICAL. ALL UNLOAD BEARING WALLS SHALL CONTINUE TO BOTTOM OF ROOF DECK W/ANK TIGHT SEAL AT DECK, BETWEEN RIBS OF METAL DECK, & AROUND BARS (ISTS) WHERE THEY CUT THRU WALLS.
2. SCORE SOWELKS @ 4'-0" O.C. EXCEPT @ CORNER 8'-0"
3. THE PLAN SECTION AS DRAWN IS CUT 10'-0" ABOVE FLOOR LEVEL IN LOW BUILDING & IMMEDIATELY ABOVE FLOOR IN METAL BUILDING.
4. RAMPS @ ALL EXTERIOR DOORS EXCEPT WHERE SIDEWALK OCCURS. CONCRETE @ DOORS A & B. ASPHALT @ ALL OTHER DOORS.

RECORD DRAWING
DATE: 11/11/72

NOTE: DO NOT SCALE DRAWINGS

MANFRET & ASSOC. - ENGINEERS
FAYETTEVILLE, ARKANSAS

DEPARTMENT OF THE NAVY - NAVAL FACILITIES ENGINEERING COMMAND
SOUTHERN DIVISION
AIR NATIONAL GUARD - MINORAL AIRPORT FT. SMITH, ARKANSAS
AIRCRAFT ENGINE INSPECTION
AND REPAIR SHOP

FLOOR PLAN & SCHEDULES

SIZE: 30" x 42" (1:10)
CONTR. COUNT NO. 102207-70-C0586
SHEET 3 OF 13