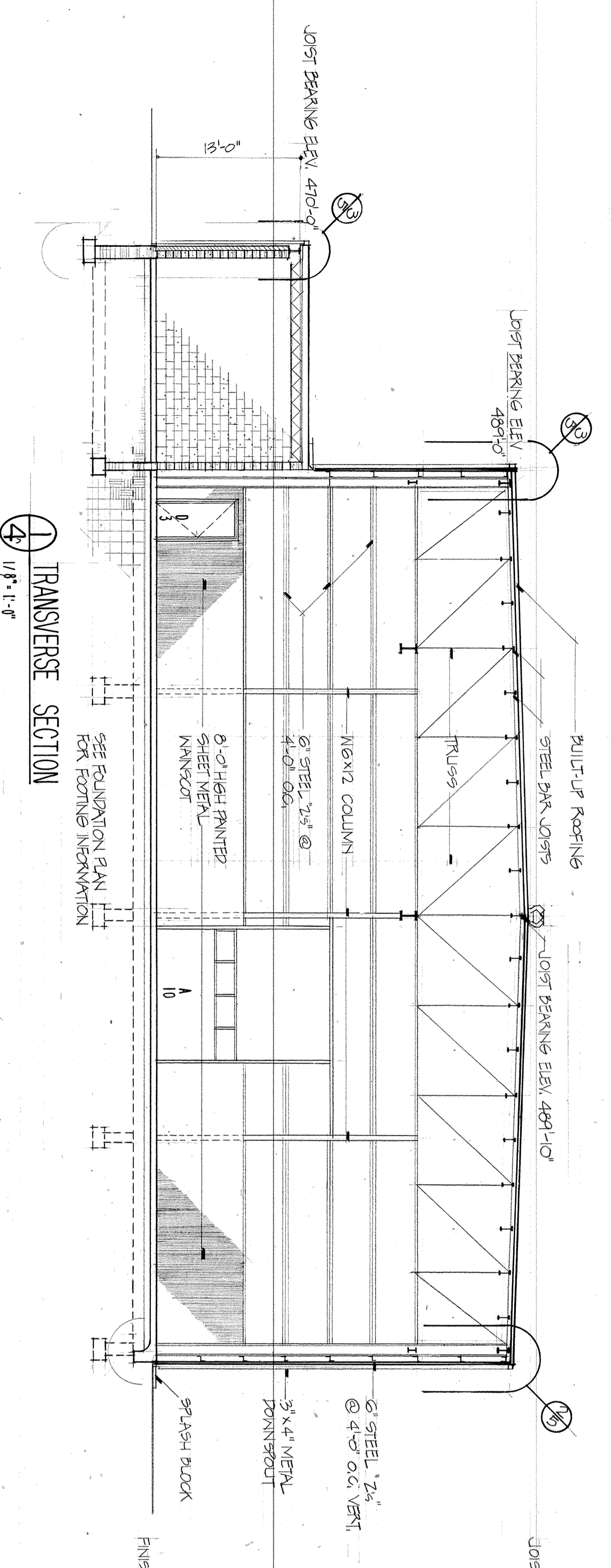
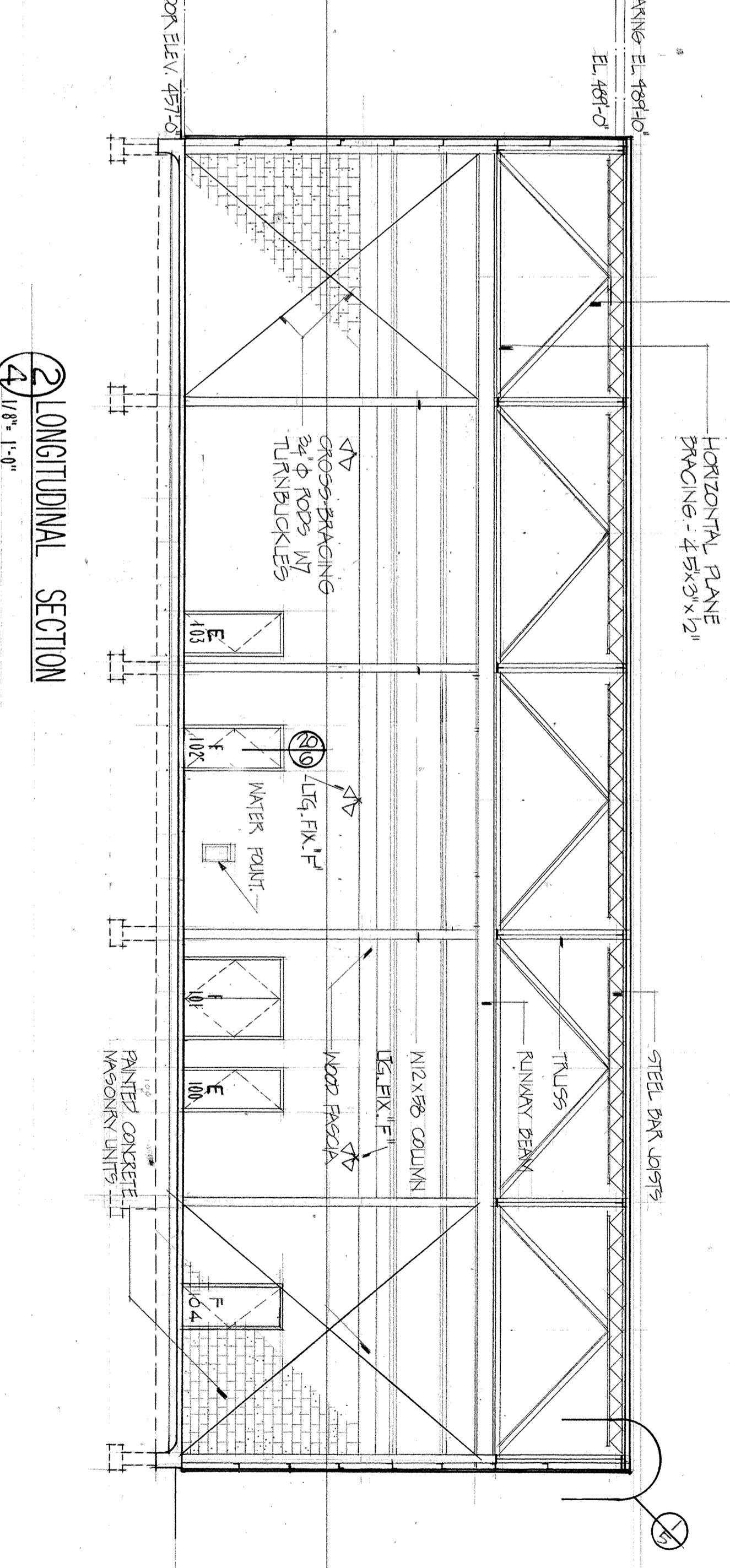


SEE FRAMING PLAN FOR STEEL INFORMATION

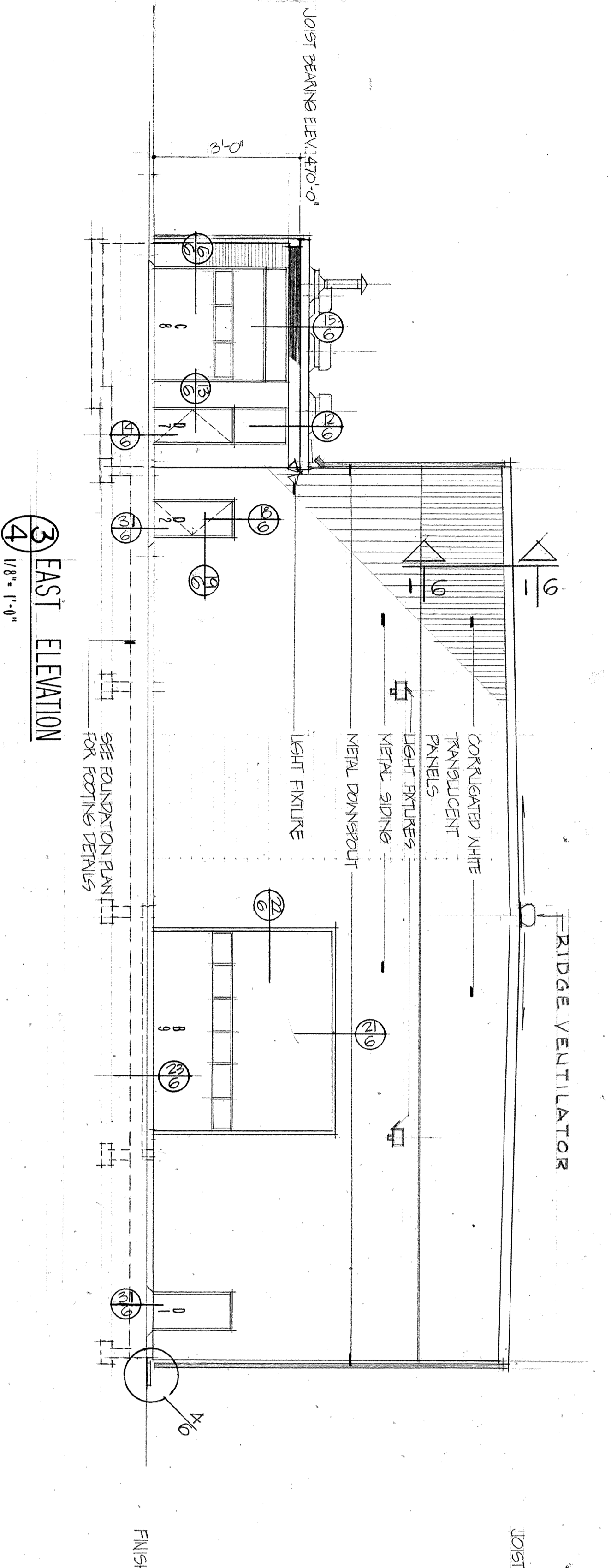


① TRANSVERSE SECTION
1/8" = 1'-0"

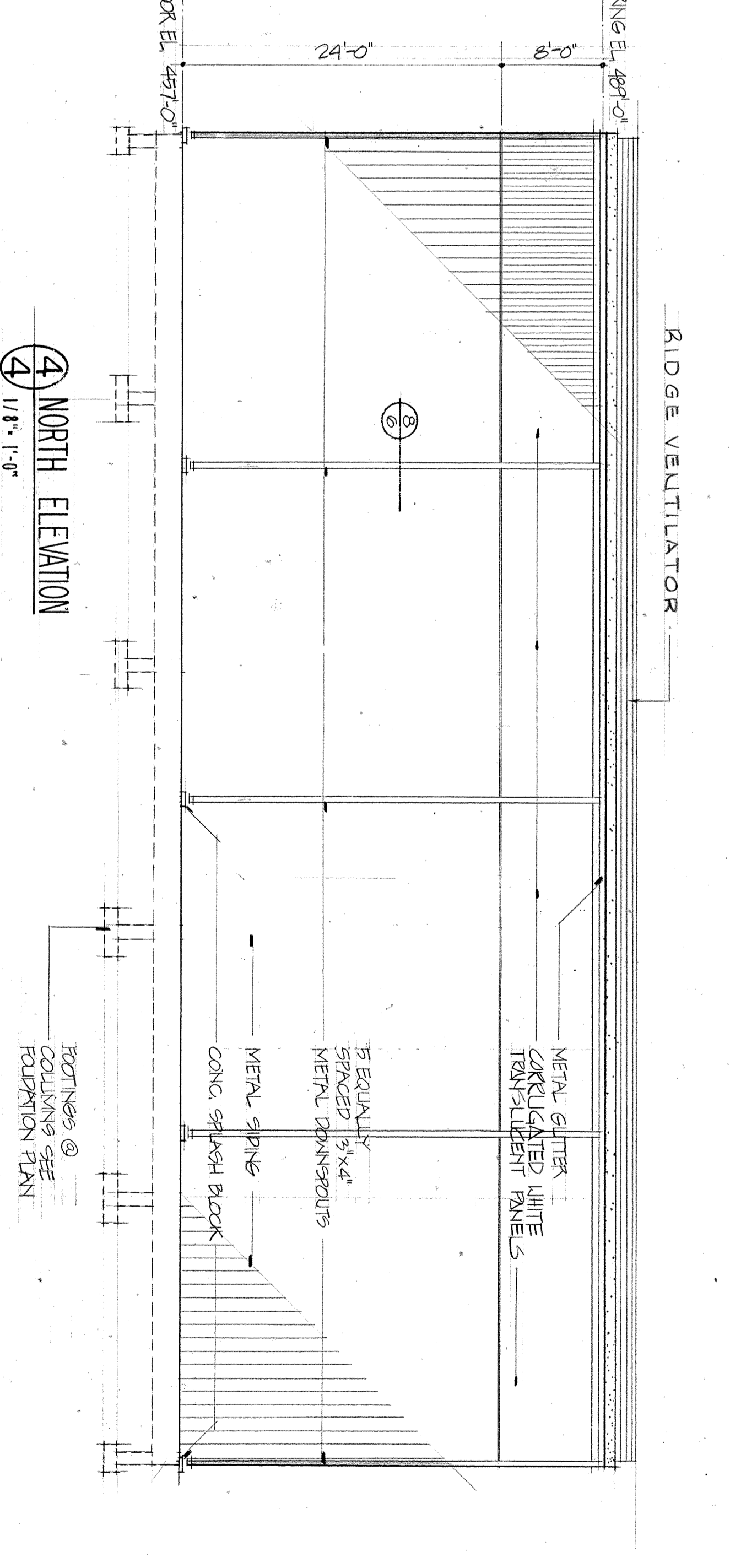
SEE FRAMING PLAN FOR STEEL INFORMATION
2 1/2" X 3 1/2" TRUSS
HORIZONTAL PLANE BRACING - 4" X 3" X 1/2"



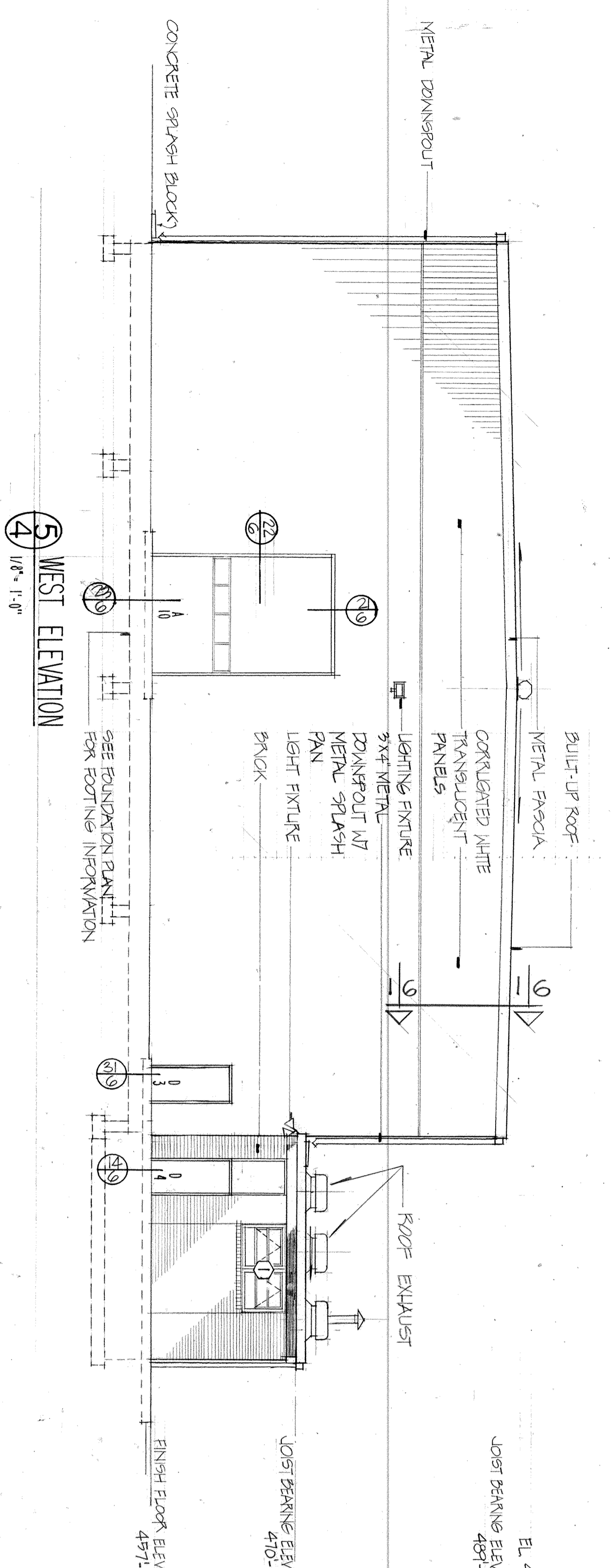
② LONGITUDINAL SECTION
1/8" = 1'-0"



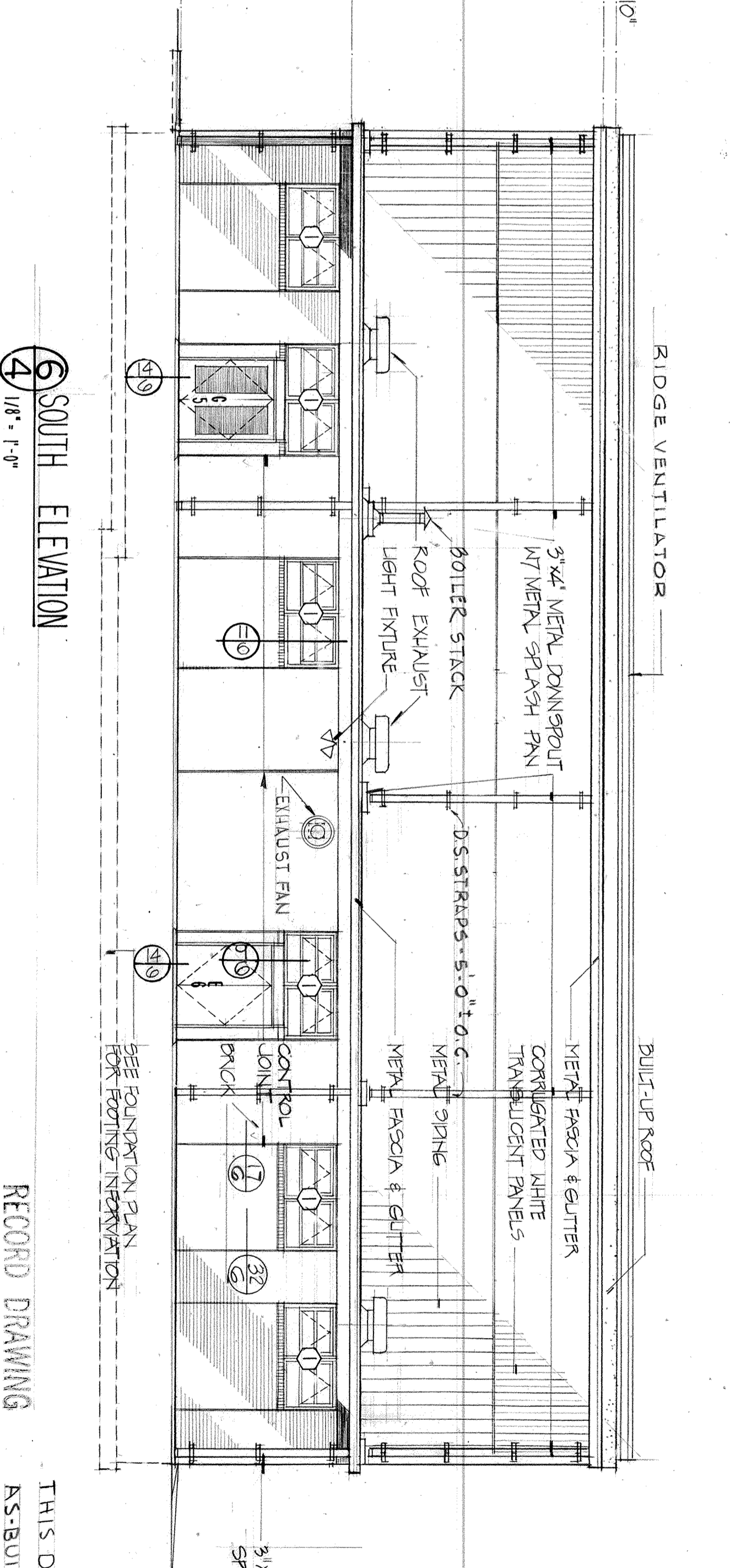
③ EAST ELEVATION
1/8" = 1'-0"



④ NORTH ELEVATION
1/8" = 1'-0"



⑤ WEST ELEVATION
1/8" = 1'-0"



⑥ SOUTH ELEVATION
1/8" = 1'-0"



1/8" = 1'-0"
GRAPHIC SCALE

REVISIONS	DATE	APPROVED
DESCRIPTION		
LET		
SEE NOTE BELOW CONCERNING AS BUILT CONDITION	7/24/73	RJS

THIS DRAWING NOT CORRECTED TO AS-BUILT SINCE CONTRACTOR ELECTED TO EXERCISE OPTION TO PROVIDE PRE-ENGINEERED METAL BUILDING

NOTE: DO NOT SCALE DRAWINGS

RECORD DRAWING
DATE: 8 9 JUL 73

MAHARREY & ASSOC.-ENGINEERS FACITTEVILLE, ARKANSAS	DEPARTMENT OF THE NAVY NAVAL FACILITIES ENGINEERING COMMAND SOUTHERN DIVISION CHARLESTON, S. C.
DESIGNED BY: MAHARREY & ASSOC.	PROJECT: AIR NATIONAL GUARD-MUNICIPAL AIRPORT ET SMITH, ARKANSAS
DRAWN BY: MAHARREY & ASSOC.	CONTRACT NO. N62467-70-C-0586
CHECKED BY: MAHARREY & ASSOC.	SPEC. 06-70-0586 SHEET 4 OF 13
DATE: 11/8/71	SCALE: 1/8" = 1'-0"
APPROVED: MAHARREY & ASSOC.	SIZE: CODE IDENT. NO. NAVFAC DRAWING NO. 1350145
	80091