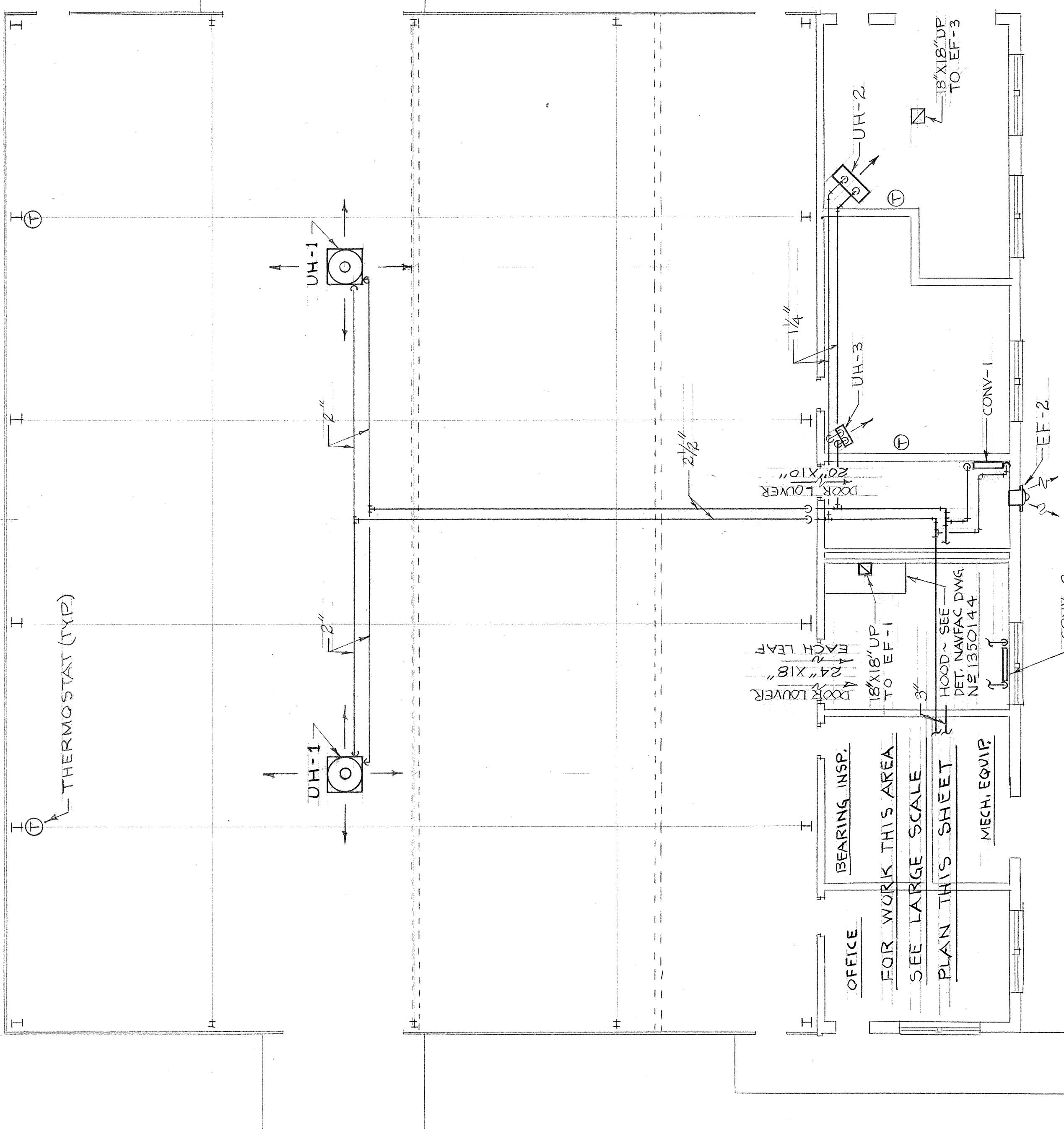
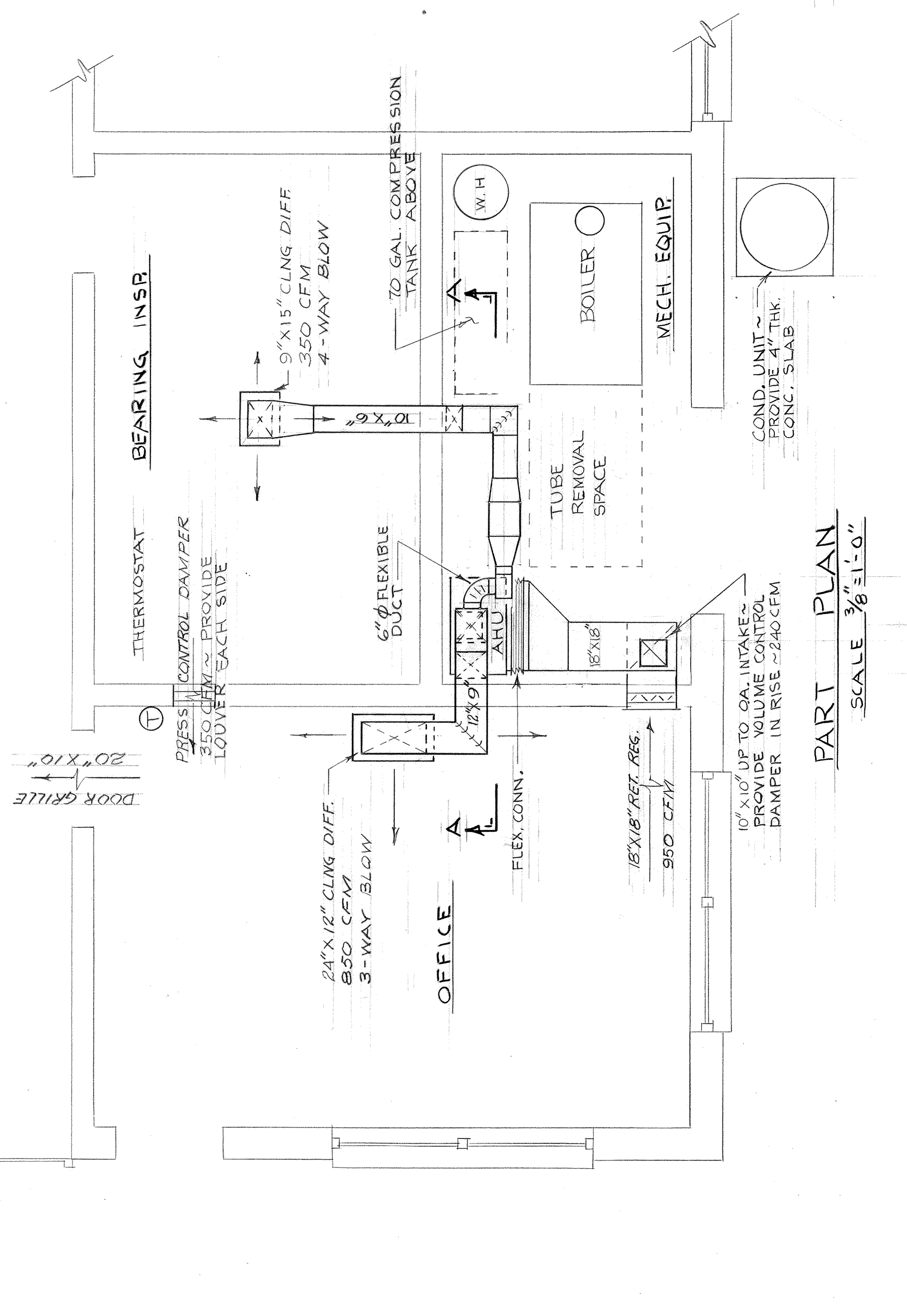


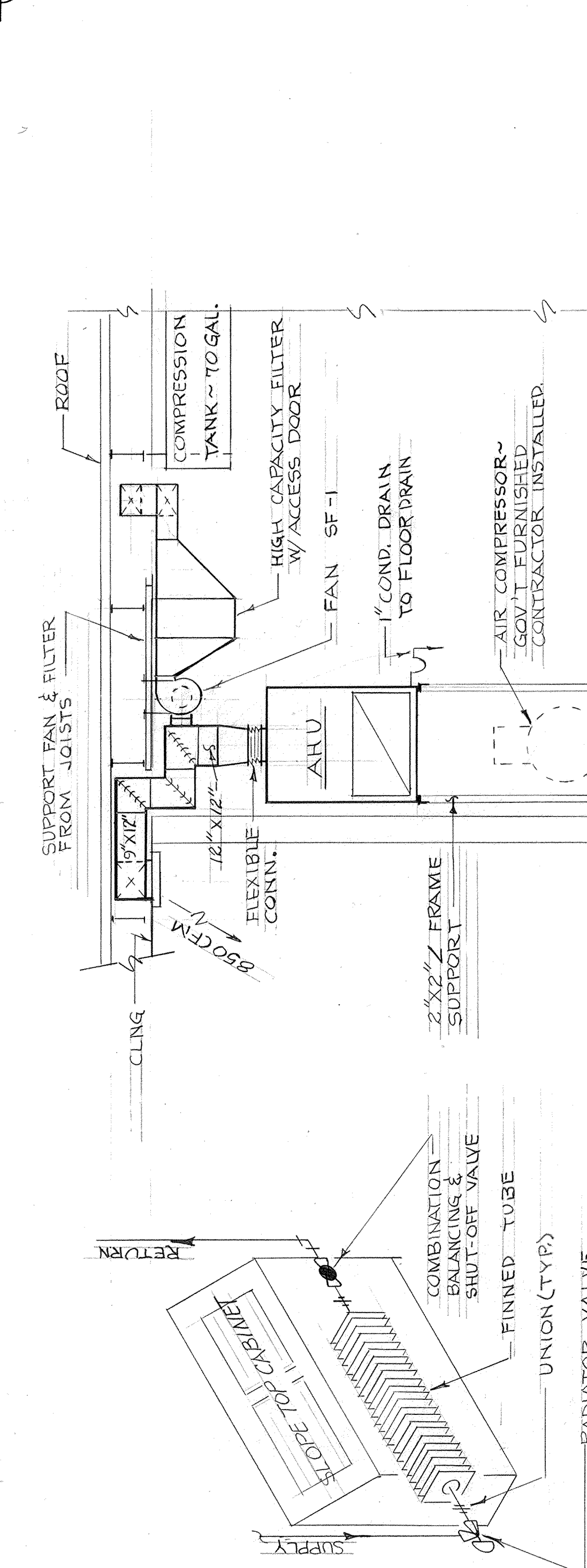
REV	DESCRIPTION	DATE	APPROVED
1	REVISE HOT WATER PIPING DIAGRAM	1/2/72	[Signature]
2	AS-BUILT DRAWING, NO CORRECTIONS	12-21-73	HVM/VA



MECHANICAL PLAN
SCALE: 1/8" = 1'-0"

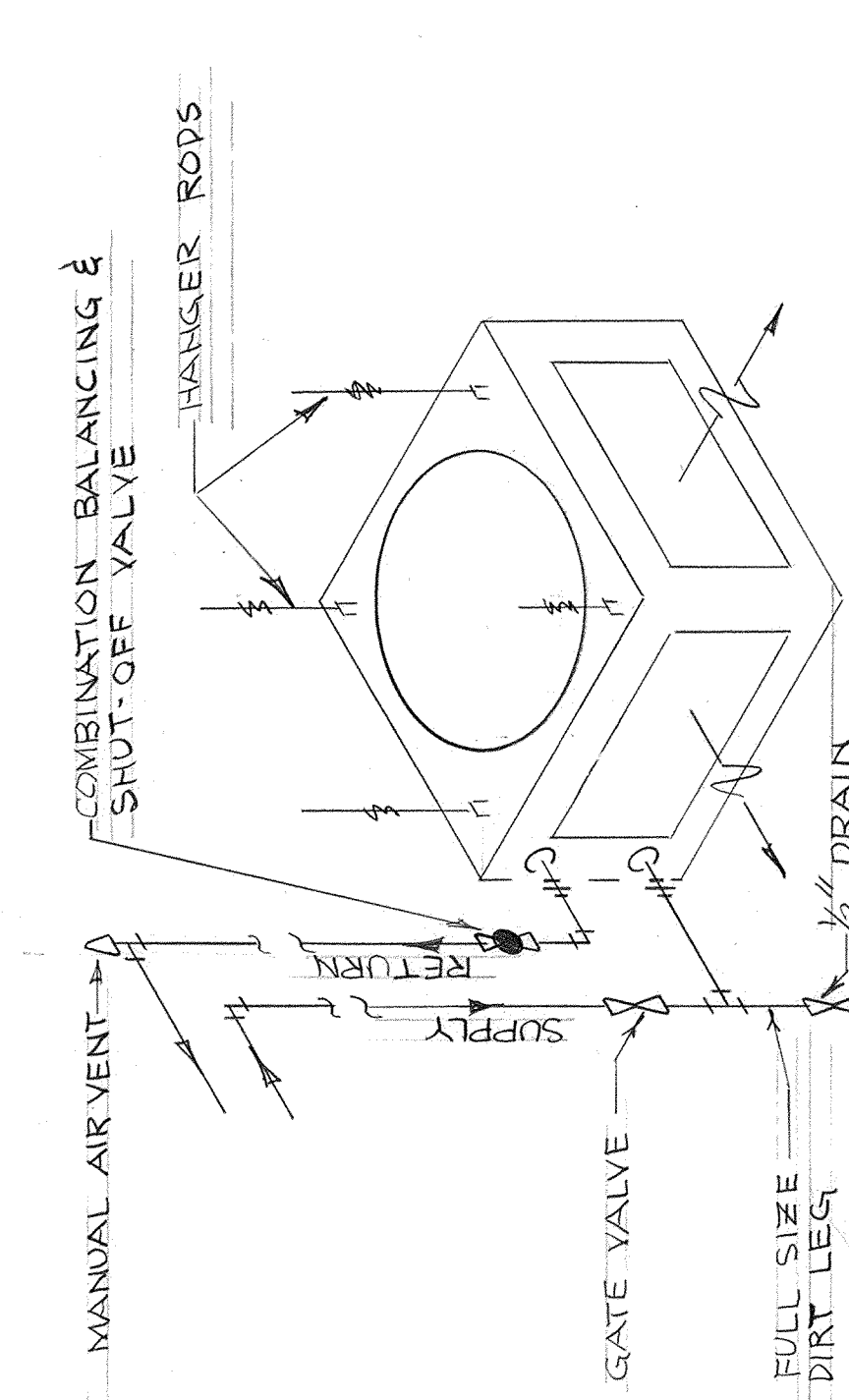


PART PLAN
SCALE: 3/8" = 1'-0"

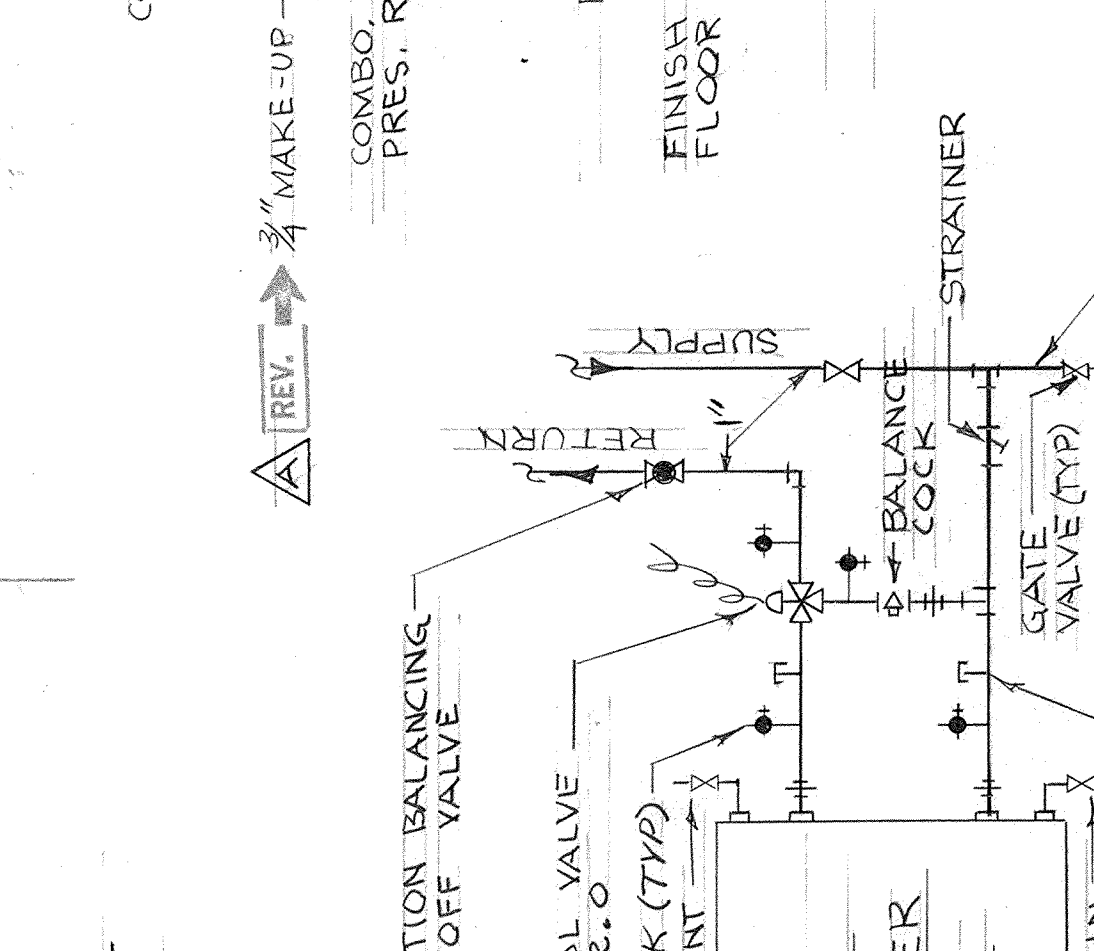


CONNECTOR DIAGRAM
NO SCALE

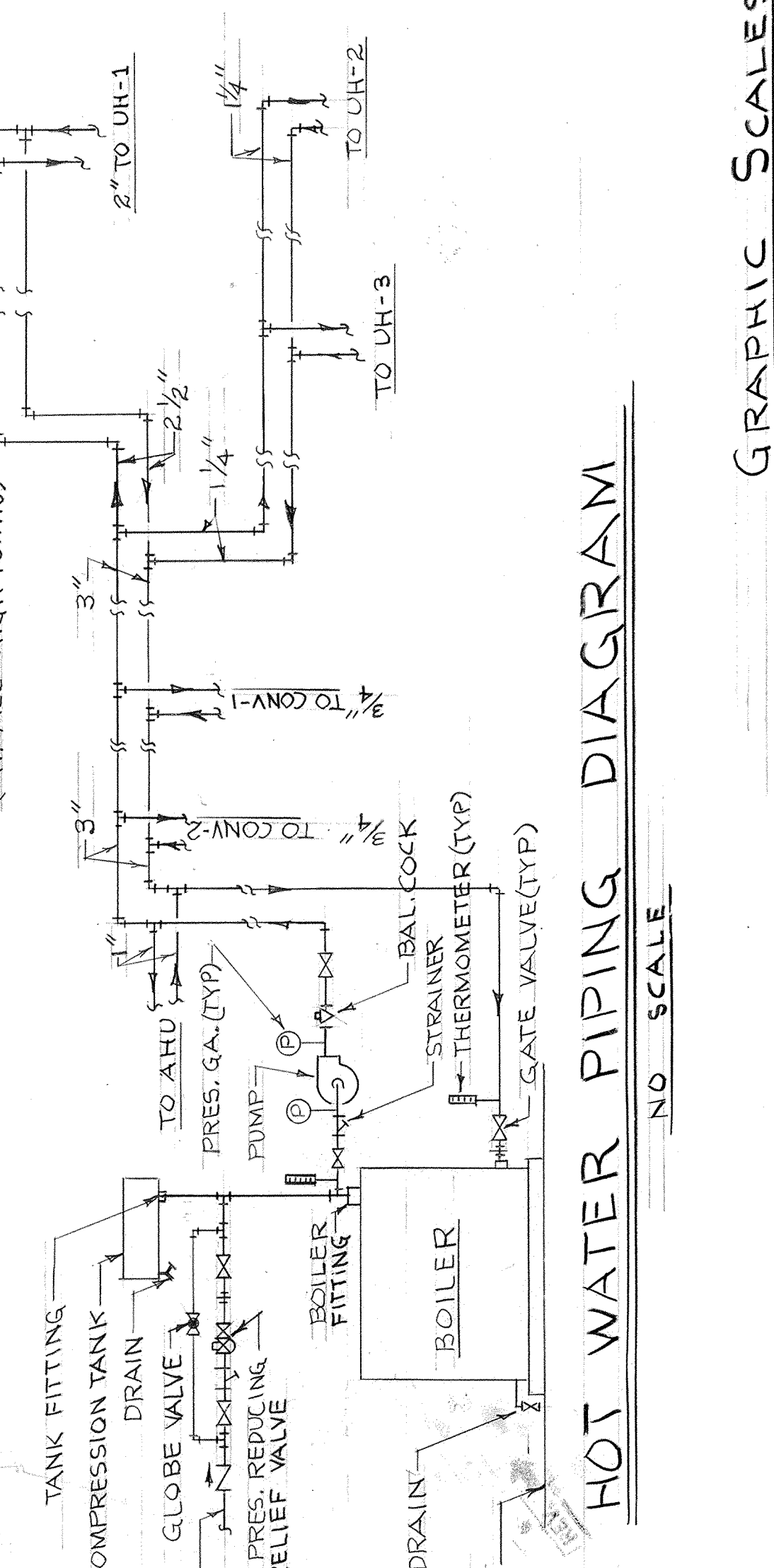
SECTION 'A-A'
SCALE: 3/8" = 1'-0"



UNIT HEATER PIPING DETAIL
4-WAY BLOW SHOWN ~ HORIZ. SIMILAR
NO SCALE

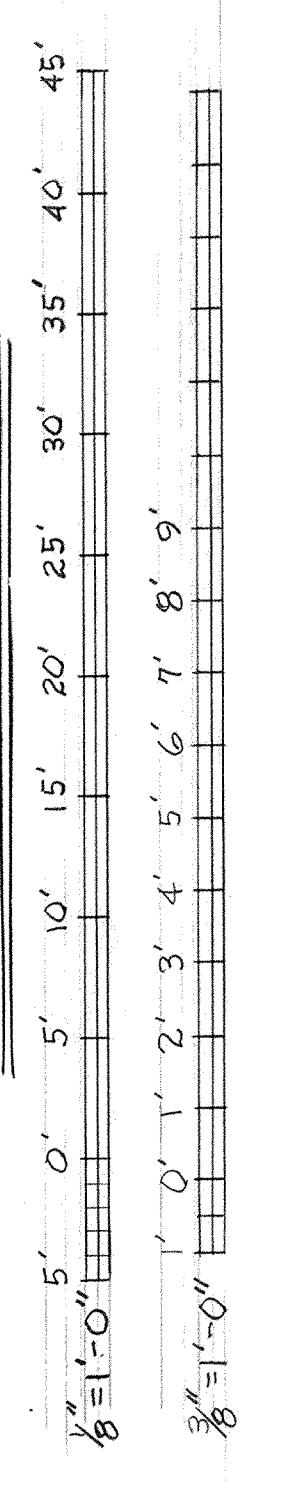


AHU COIL PIPING DETAIL
NO SCALE



HOT WATER PIPING DIAGRAM
NO SCALE

GRAPHIC SCALES



DESIGN DATA	
SUMMER OFFICE BEARING INSP.	98°F db, 78°F wb 78°F db, 50% RH
WINTER OFFICE BEARING INSP.	17°F
SHOPS	17°F
AMBIENT AIR THRU CONDENSING UNIT ~ 101°F	

AHU SCHEDULE	
AIR CONDITIONING DATA	
SUMMER ~ COOLING	
ROOM SENS. LOAD (BTU/HR)	23,000
ROOM LAT. LOAD (BTU/HR)	3,000
TOTAL SENS. LOAD (BTU/HR)	26,000
GRAND TOTAL LOAD (BTU/HR)	35,600
TONS NET REFRIGERATION	3
AIR ENTERING COIL (°F)	82 DB, 67 WB
APPARATUS DEWPOINT (°F)	54
OUTSIDE AIR (CFM)	240
CIRCULATED AIR (CFM @ EXT. S.P.)	1200 @ 1/2" H ₂ O
ESTIMATED BYPASS FACTOR	0.25
COIL FACE VELOCITY (FPM)	600 MAX
WINTER ~ HEATING	
TOTAL HEAT LOSS (BTU/HR)	40,000
AIR ENTERING COIL (°F)	57°F
CIRCULATED AIR (CFM)	1200
HOT WATER GPM @ 200°F	4

FAN SCHEDULE					
FAN NO	CFM	S.P. H ₂ O	APPROX. H.P.	TYPE	REMARKS
SF-1	350	1"	1/6	CENTRIFUGAL	W/INLET VORTEX DAMPER
EF-1	1800	1/8"	1/4	CENTRIFUGAL	ROOF MOUNTED
EF-2	350	1/8"	1/2	CENTRIFUGAL	SIDE - WALL
EF-3	1600	1/8"	1/4	CENTRIFUGAL	ROOF MOUNTED

UNIT HEATER/CONVECTOR SCHEDULE						
MARK	CAPACITY (MIB)	APPROX. H.P.	WATER GPM	ENT. TEMP.	MOUNTING HEIGHT	REMARKS
UH-1	330.0 (each)	1/2	33.2	200°F	20"	4-WAY BLOW
UH-2	90.0	1/6	9	"	9"	HORIZONTAL
UH-3	12.5	1/2	1.3	"	9"	HORIZONTAL
CONV-1	6.5	N/A	0.7	"	18"	WALL MTD.
CONV-2	6.0	N/A	0.6	"	18"	WALL MTD.

PUMP SCHEDULE			
CAPACITY (GPM)	HEAD (FT. H ₂ O)	APPROX. H.P.	REMARKS
82	20'	3/4	IN-LINE CIRCULATOR

FOR ESTIMATING PURPOSES ONLY ~ CONTRACTOR SHALL CALCULATE PUMP HEAD & FAN STATIC PRESSURES TO SUIT EQUIPMENT ACTUALLY PROVIDED.

RECORD DRAWING
DATE: 30 JUL 1973

DESIGNED BY: B. E. JOHNSON
 DRAWN BY: JOHNSON
 IN CHARGE: J. D. HAMILTON
 PROJECT: [Signature]
 DIRECTOR: [Signature]

DEPARTMENT OF THE ARMY, AVIATION FACILITIES ENGINEERING COMMAND
SOUTHERN DIVISION
 AIR NATIONAL GUARD, FT. SMITH, ARKANSAS
AIRCRAFT ENGINE INSPECTION AND REPAIR SHOP
 MECHANICAL PLAN

APPROVED: [Signature]
 DATE: 11-16-71
 SIZE: F
 CODE IDENT NO.: NAYFAC DRAWING NO. 80091
 CONST. CONTR. NO.: N62461-70-C-0586
 SCALES: SHOWN
 SHEET 9 OF 13