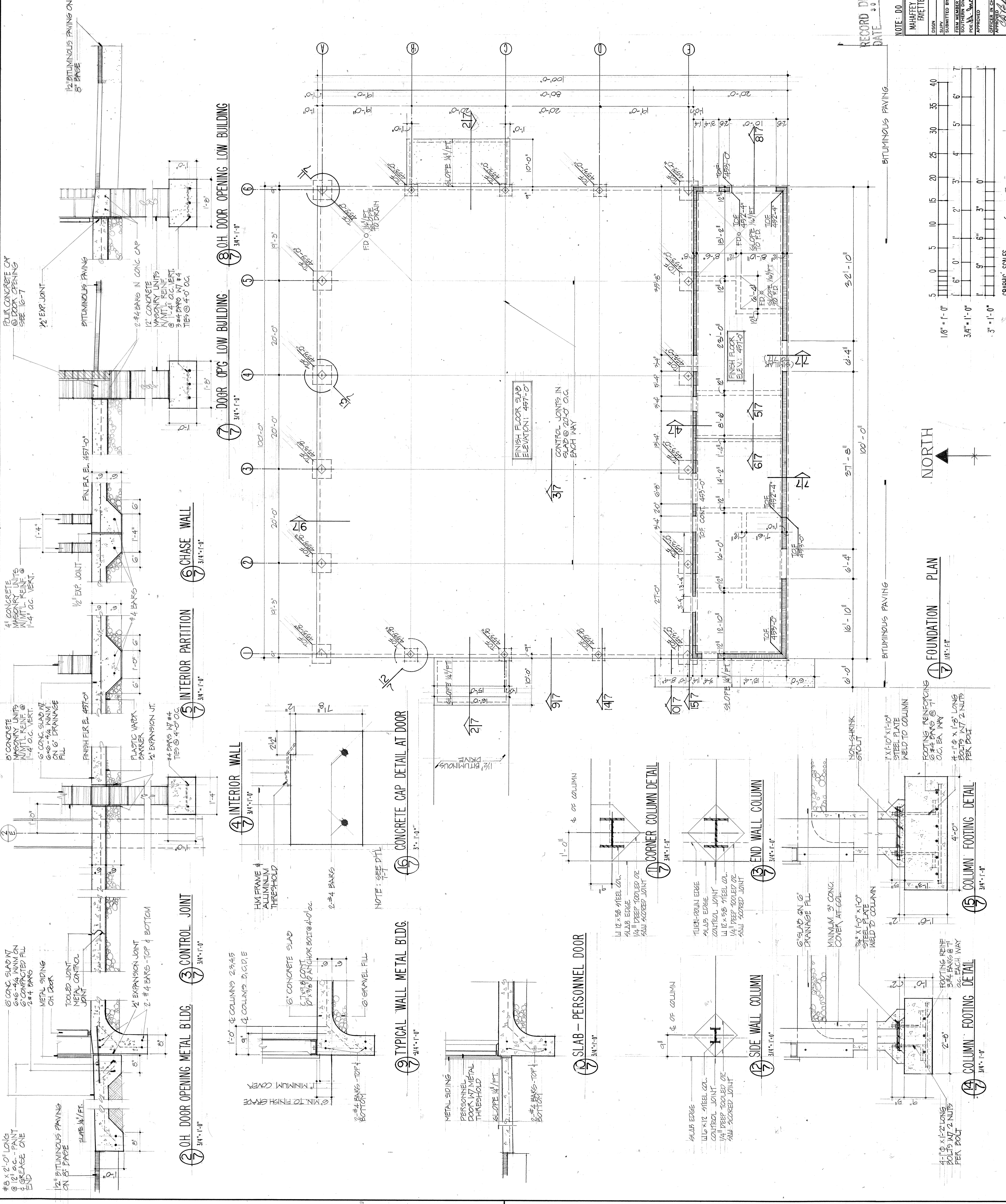


REV	DESCRIPTION	DATE	APPROVED
1	SEE NOTE BELOW CONCERNING AS-BUILT CONDITIONS	7/24/73	RUS



GENERAL NOTES:

1. THE BOTTOM OF ALL FOOTINGS SHALL BEAR A MINIMUM OF 3'-0" INTO UNDISTURBED SOIL, AND SHALL BE A MINIMUM OF 3'-0" BELOW FINISH GRADE.
2. ALL INTERIOR CONCRETE FLOOR SLABS SHALL BE 6" THICK W/ 6x8-4/4 MINIM. OVER PLASTIC VAPOR BARRIER AND 6" DRAINAGE FILL.
3. ALL CONCRETE SHALL BE 3000 PSI. CONCRETE.
4. THE FOUNDATION PLAN, AS DRAWN, IS A PLAN SECTION CUT IMMEDIATELY ABOVE FLOOR LEVEL. FOOTINGS AND THICKENED SLABS ARE SHOWN AS DOTTED LINES.
5. WHERE SIDEWALKS OR APRONS (NEET-SIDE) ARE ADJACENT TO METAL BUILDING, THE AMOUNT OF DROP BELOW FINISH FLOOR MAY VARY, BUT SHALL NOT BE LESS THAN 1" MAINTAIN 1" AT ALL DOOR OPENINGS AS DETAILED.

DESIGN CRITERIA

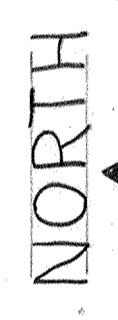
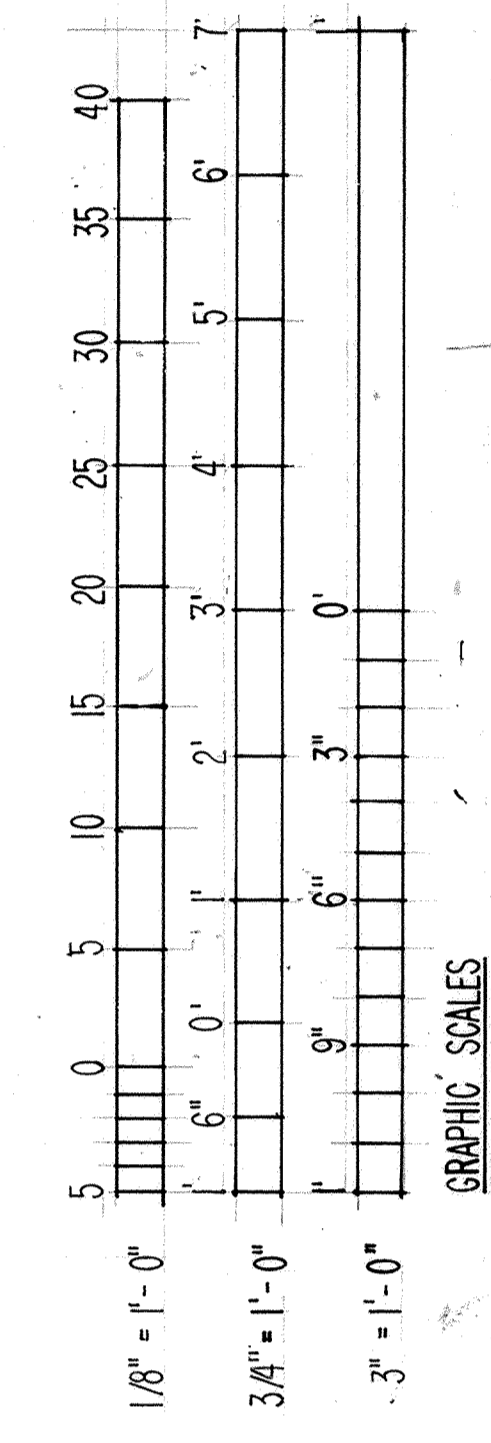
1. ROOF LIVE LOAD 20 PSF
2. WIND 90 MPH APPLIED IN ACCORDANCE WITH DM-2 CONCENTRATED CRANE LOAD 17.5 K VERTICAL,
3. 2.8 K TRANSVERSE, 1.4 K LONGITUDINAL (SEE TRUSS ELEVATION)
4. ALLOWABLE SOIL BEARING 5000 PSF FOR CONTINUOUS FOOTINGS & 3800 PSF FOR INDIVIDUAL FOOTINGS

THIS DRAWING NOT CORRECTED TO AS-BUILT SINCE CONTRACTOR ELECTED TO EXERCISE OPTION TO FURNISH PRE-ENGINEERED METAL BUILDING.

NOTE: DO NOT SCALE DRAWINGS

RECORD DRAWING DATE: 30 JUL 1973

DESIGN	DR	CHK	DATE
MAHAFFEY & ASSOC-ENGINEERS			
FAYETTEVILLE, ARKANSAS			
SUBMITTED BY	CH	ENGR	DATE
EDDY, R. E.			
SOUTHERN DIVISION			
PPS: J. W. CHAMBERLAIN			
APPROVED	DATE	DATE	
CHAMBERLAIN	11-2-71	155048	
CONSTR. CONTR. NO. 162469-D-C-05846			
80091			
SCALE: 3/8" = 1'-0"	SHEET	7	OF 13



FOUNDATION PLAN

- 1. INTERIOR PARTITION
- 2. O.H. DOOR OPENING METAL BLDG.
- 3. CONTROL JOINT
- 4. INTERIOR WALL
- 5. CHASE WALL
- 6. O.H. DOOR OPENING LOW BUILDING
- 7. DOOR OPNG LOW BUILDING
- 8. O.H. DOOR OPENING LOW BUILDING
- 9. INTERIOR WALL
- 10. CONCRETE CAP DETAIL AT DOOR
- 11. TYPICAL WALL METAL BLDG.
- 12. SLAB - PERSONNEL DOOR
- 13. CORNER COLUMN DETAIL
- 14. END WALL COLUMN
- 15. SIDE WALL COLUMN
- 16. COLUMN FOOTING DETAIL
- 17. COLUMN FOOTING DETAIL