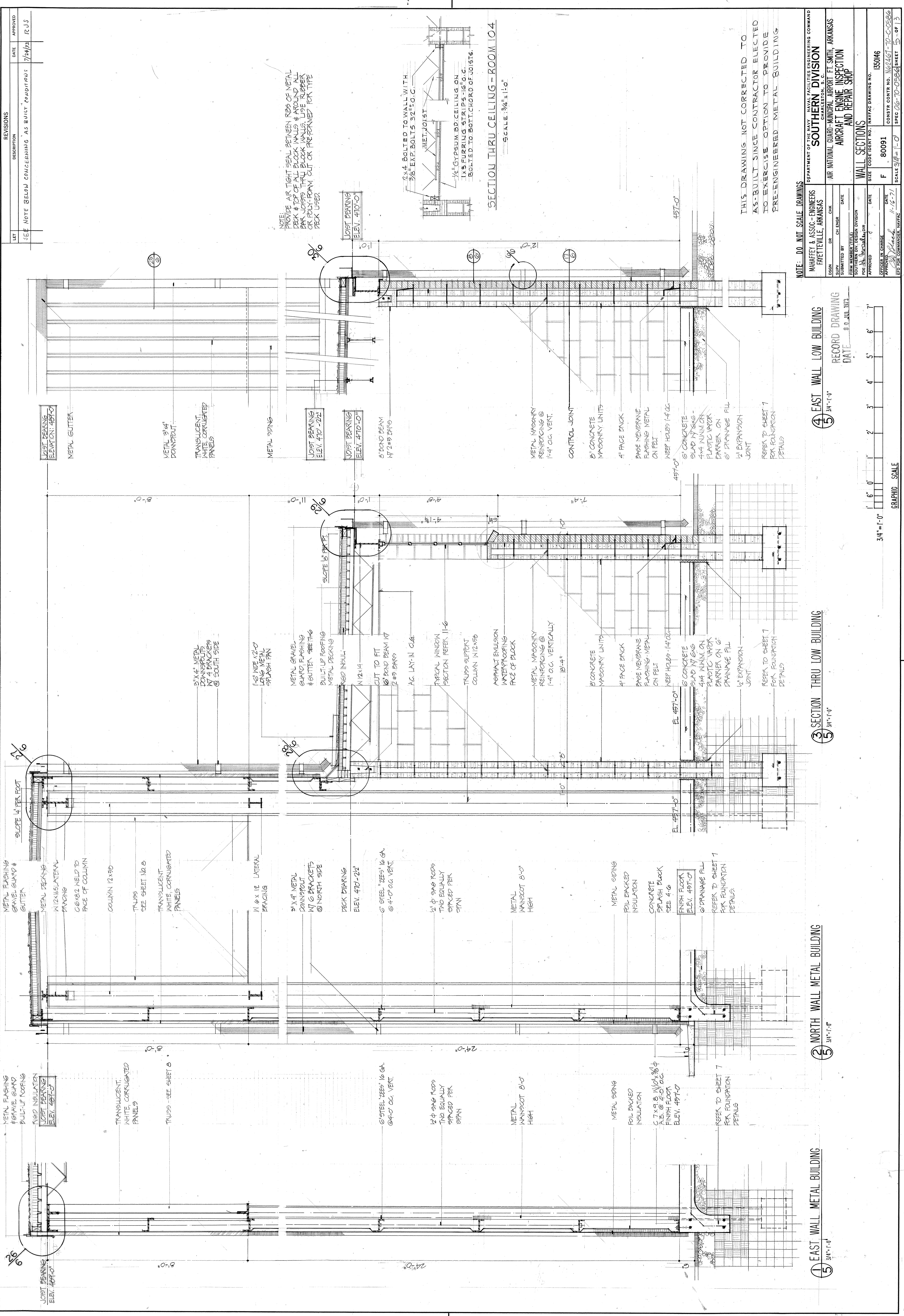


LET	REVISIONS	DATE	APPROVED
	DESCRIPTION		
	SEE NOTE BELOW CONCERNING AS BUILT CONDITIONS	7/24/73	RJS

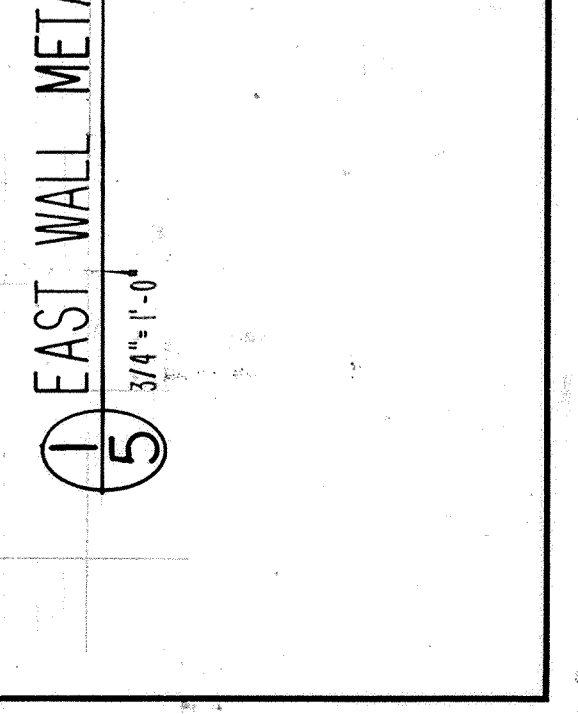
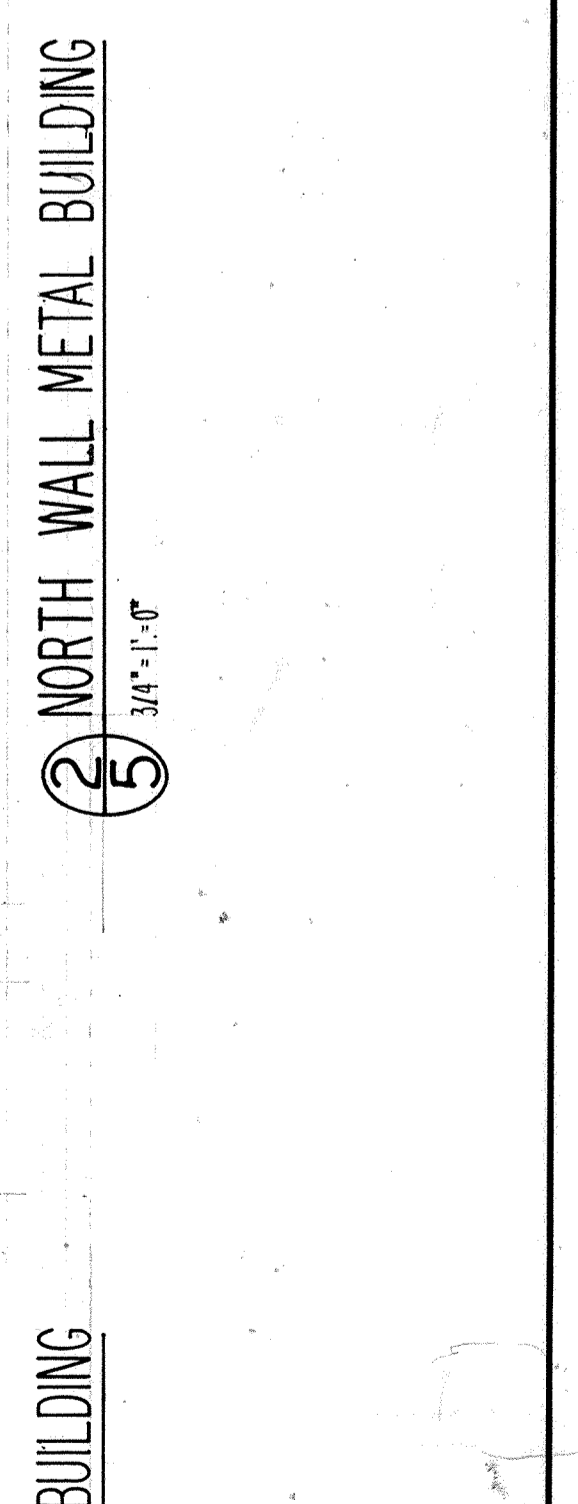
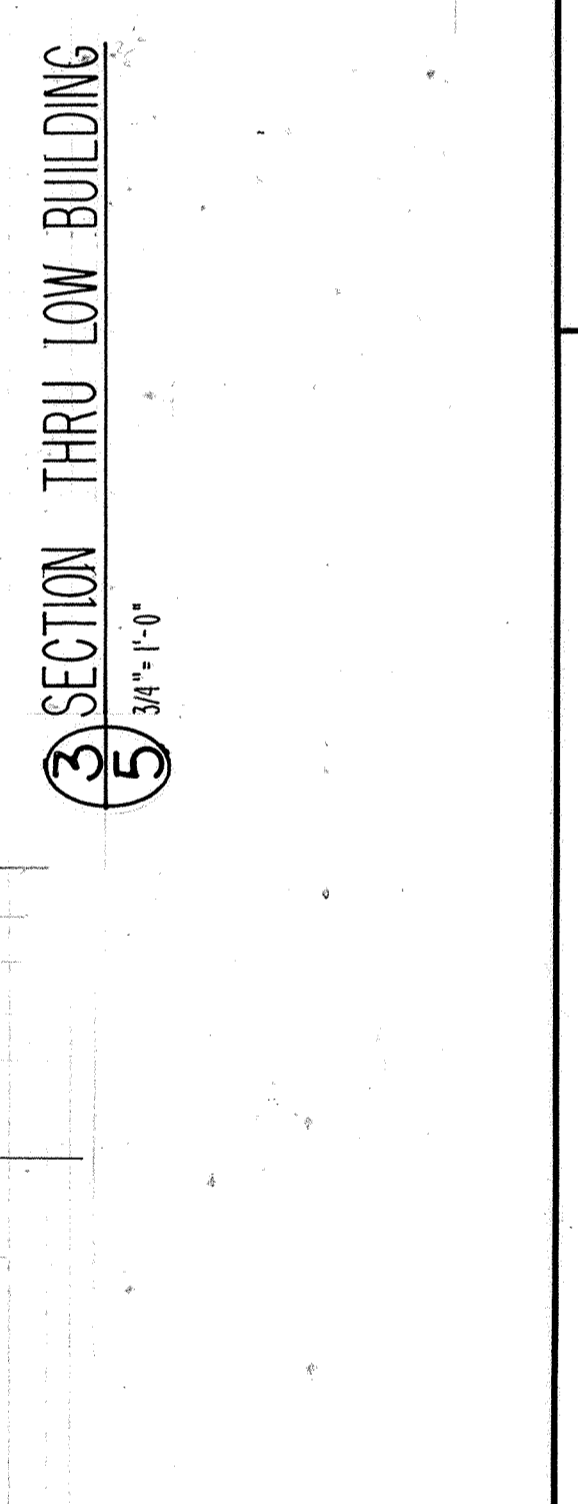
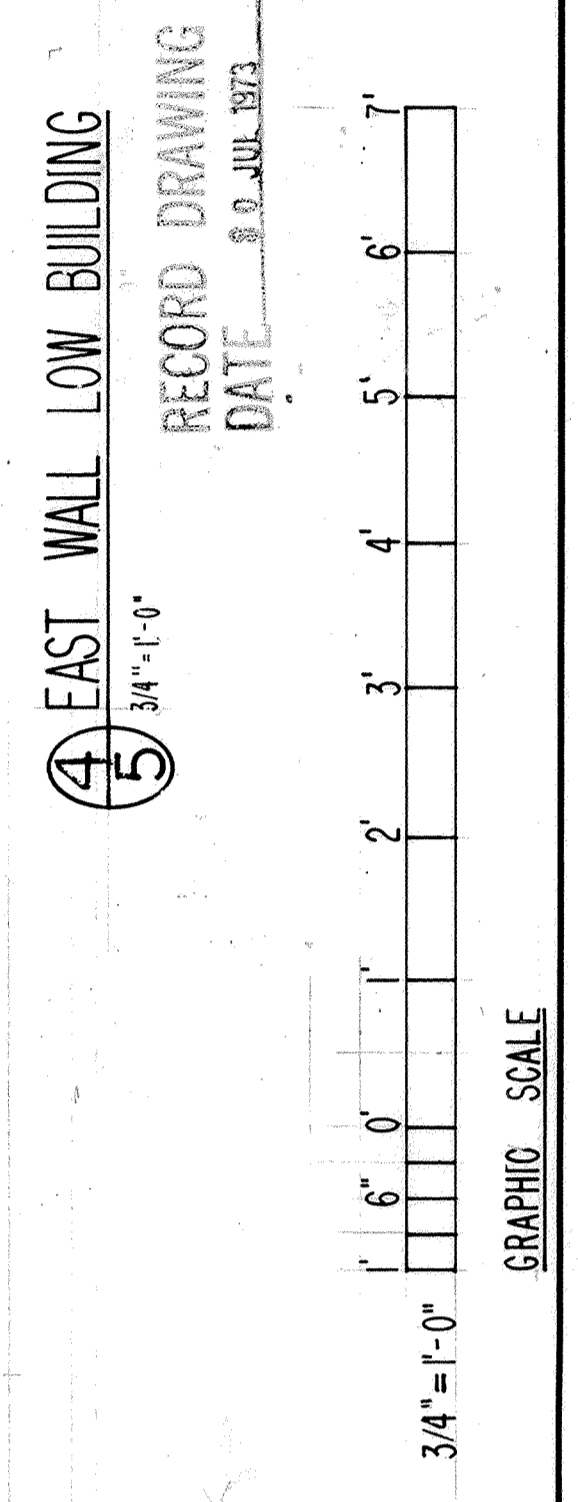
NOTE: AIR TIGHT SEAL BETWEEN ROSS OF METAL PECK UP OF ALL BLOCK WALLS & AROUND PEAK JOISTS THAT BLOCK WALLS USE RUBBER OR POLY-FEAM CUT OR PRE-FORMED FOR TITE PECK USER.



SECTION THRU CEILING - ROOM 104
SCALE: 3/4" = 1'-0"

NOTE: DO NOT SCALE DRAWINGS

WHAFFEE & ASSOC. - ENGINEERS FAYETTEVILLE, ARKANSAS	DEPARTMENT OF THE NAVY - NAVAL FACILITIES ENGINEERING COMMAND CHARLESTON, S. C.
DR. CHASE	SOUTHERN DIVISION AIR NATIONAL GUARD - MUNICIPAL AIRPORT FT. SMITH, ARKANSAS
DATE	AIRCRAFT ENGINE INSPECTION AND REPAIR SHOP
DATE	WALL SECTIONS
DATE	SIZE CODE (UNIT NO.) NAVFAC DRAWING NO. 135046
DATE	F 80091
DATE	CONSTR. CONTR. NO. N02467-70-C-0586
DATE	SPEC. 06-70-0586 SHEET 5 OF 13



THIS DRAWING NOT CORRECTED TO AS-BUILT SINCE CONTRACTOR ELECTED TO EXERCISE OPTION TO PROVIDE PRE-ENGINEERED METAL BUILDING