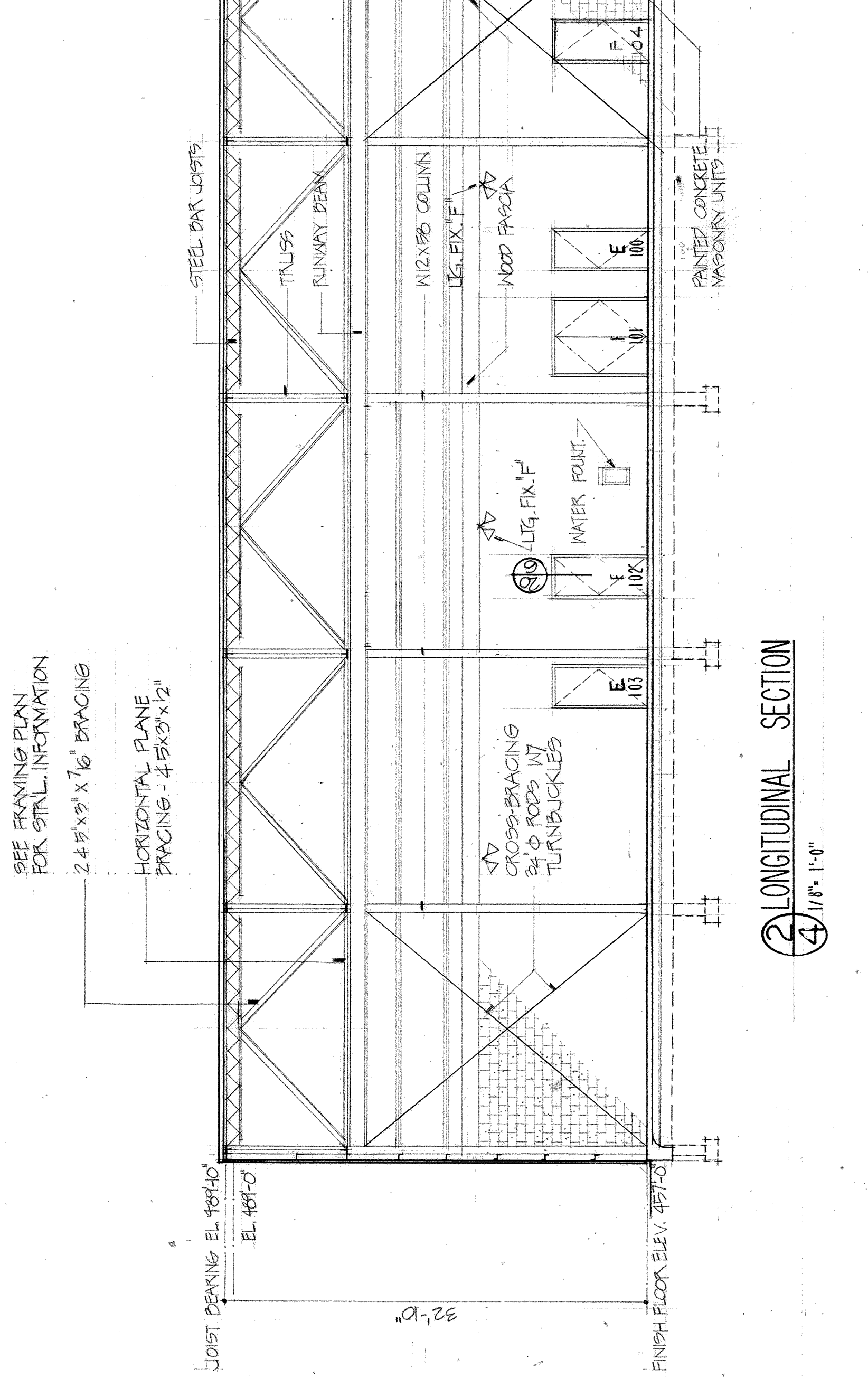
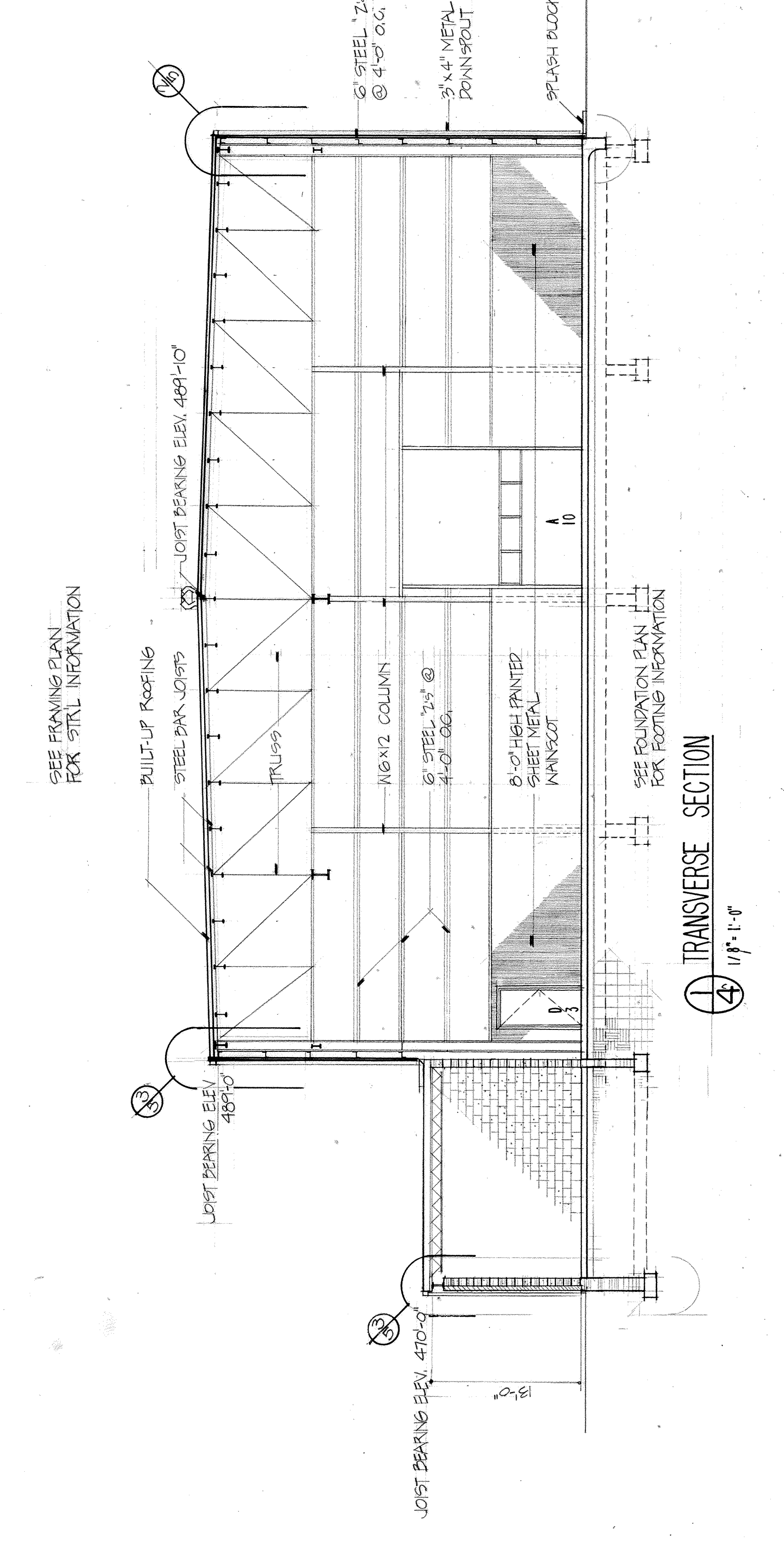


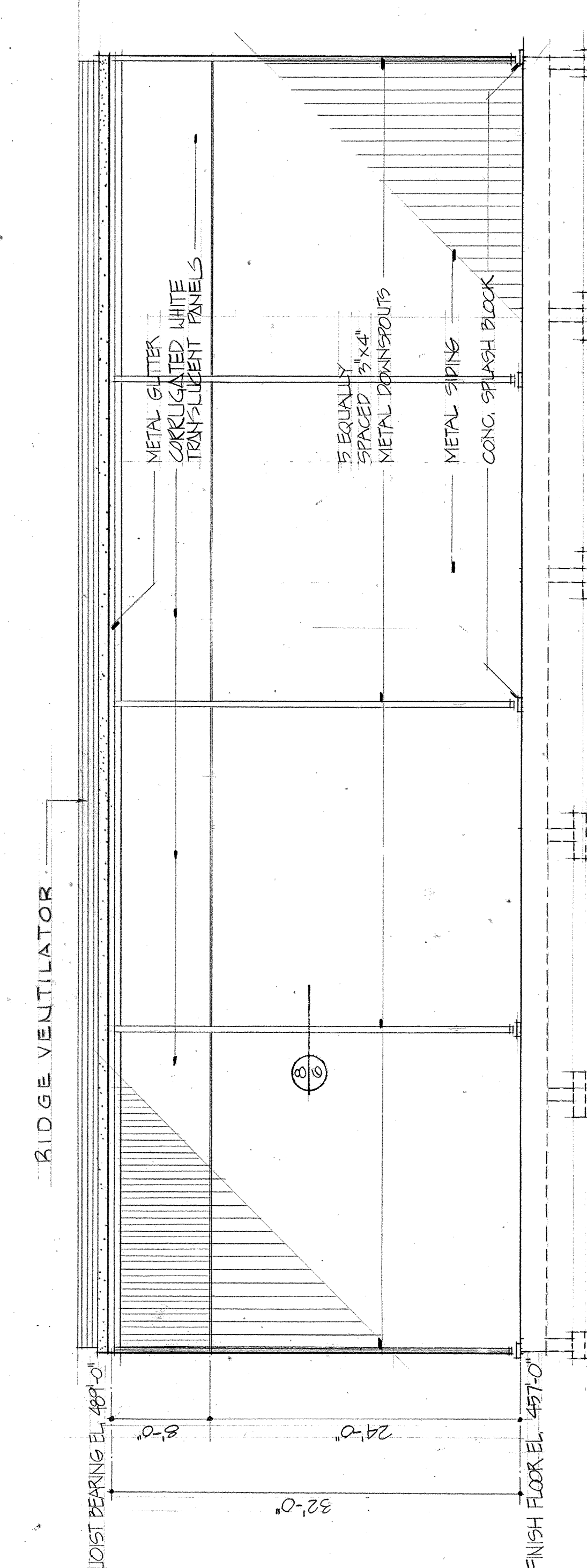
REV	DESCRIPTION	DATE	APPROVED
1	SEE NOTE BELOW CONCERNING AS BUILT CONDITION	7/24/13	RJS



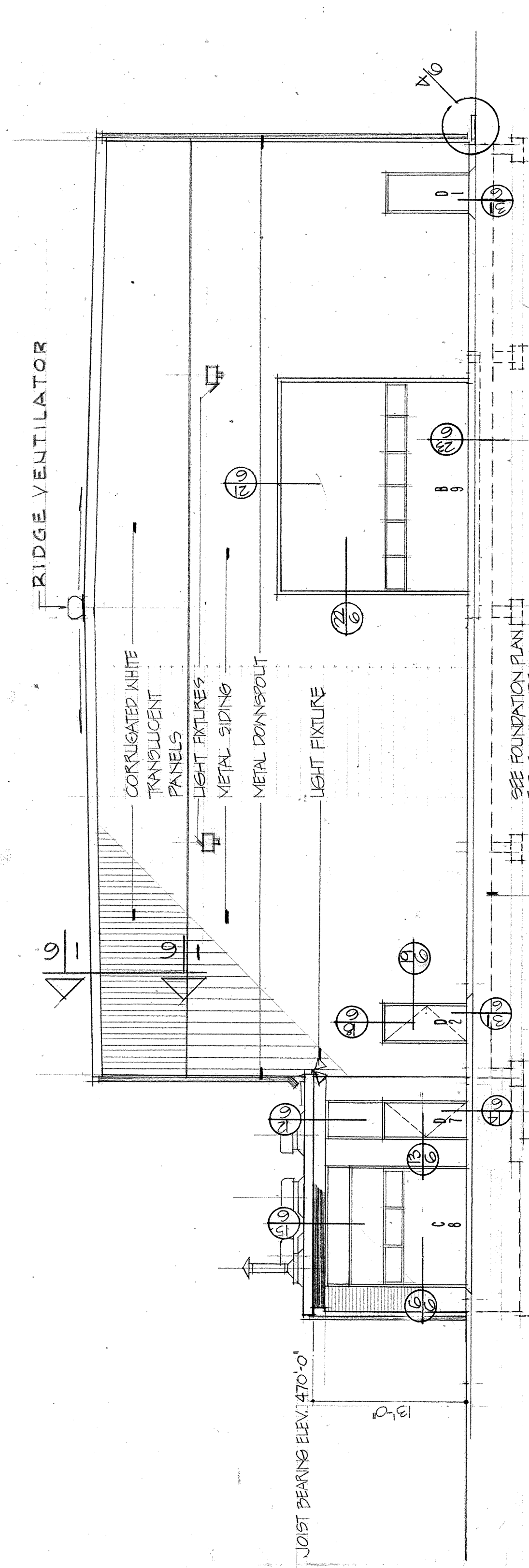
② LONGITUDINAL SECTION
1/8" = 1'-0"



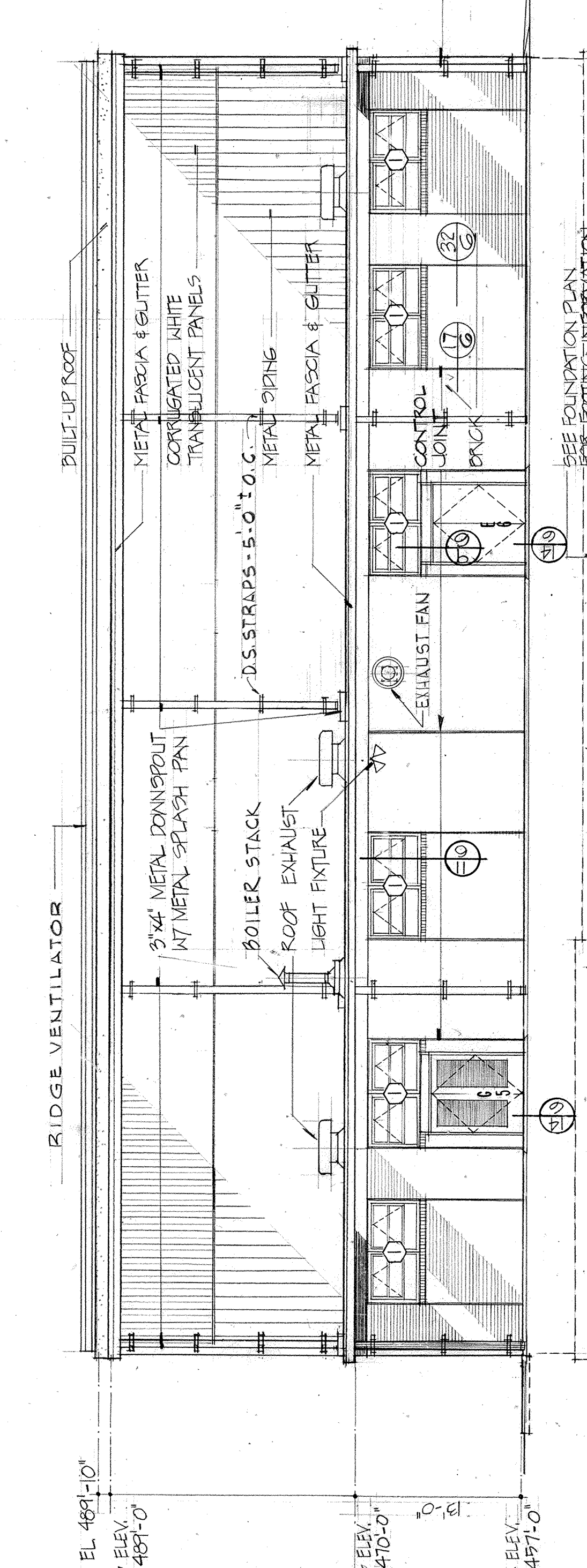
① TRANSVERSE SECTION
1/8" = 1'-0"



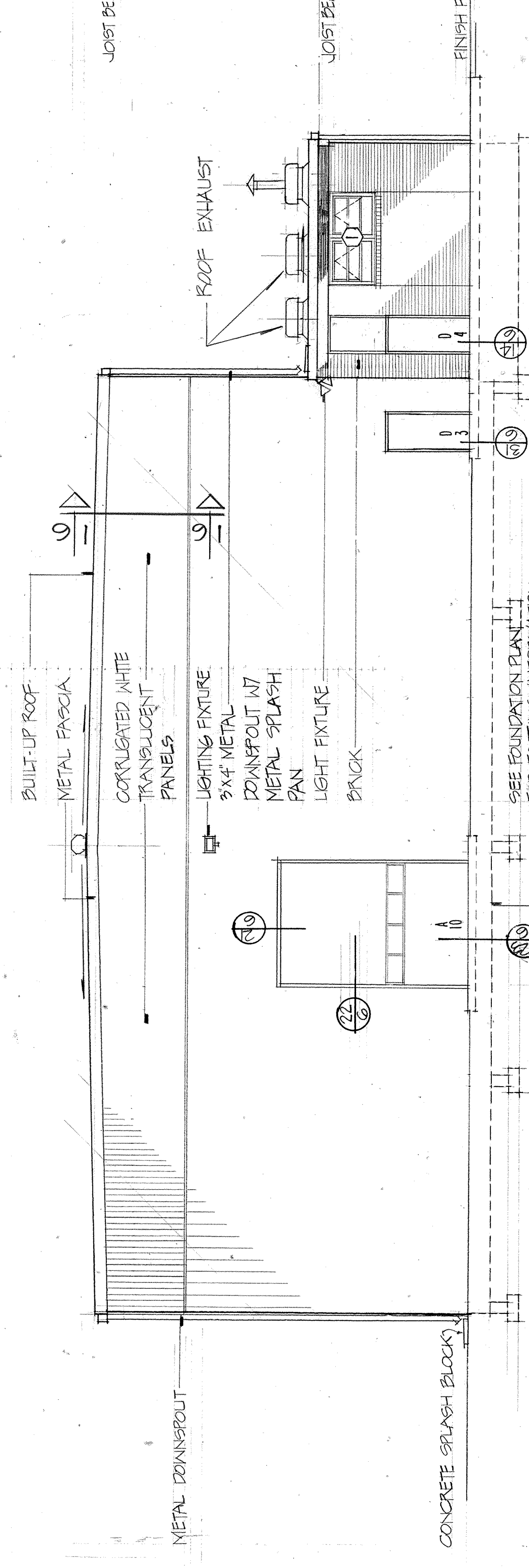
④ NORTH ELEVATION
1/8" = 1'-0"



③ EAST ELEVATION
1/8" = 1'-0"



⑥ SOUTH ELEVATION
1/8" = 1'-0"



⑤ WEST ELEVATION
1/8" = 1'-0"

THIS DRAWING NOT CORRECTED TO AS-BUILT SINCE CONTRACTOR ELECTED TO EXERCISE OPTION TO PROVIDE PRE-ENGINEERED METAL BUILDINGS

RECORD DRAWING DATE 8 JUL 2013

NOTE: DO NOT SCALE DRAWINGS

DEPARTMENT OF THE NAVY NAVAL FACILITIES ENGINEERING COMMAND
SOUTHERN DIVISION
CHARLESTON, S.C.

MANAHEFF & ASSOC - ENGINEERS
MANFETTEVILLE, ARKANSAS

AIR NATIONAL GUARD - MUNICIPAL AIRPORT FT SMITH, ARKANSAS
AIRCRAFT ENGINE INSPECTION AND REPAIR SHOP

ELEVATIONS & SECTIONS

DESIGN: MANAHEFF & ASSOC
CHECKED: [Signature]
DATE: 11/18/11

APPROVED: [Signature]
DATE: 11/18/11

SIZE: 8 1/2" x 11" DRAWING NO.: 155045
CONTRACT NO.: N60461-10-C-0556
SPEC: 26-70-25-24 SHEET: 4 OF 13

