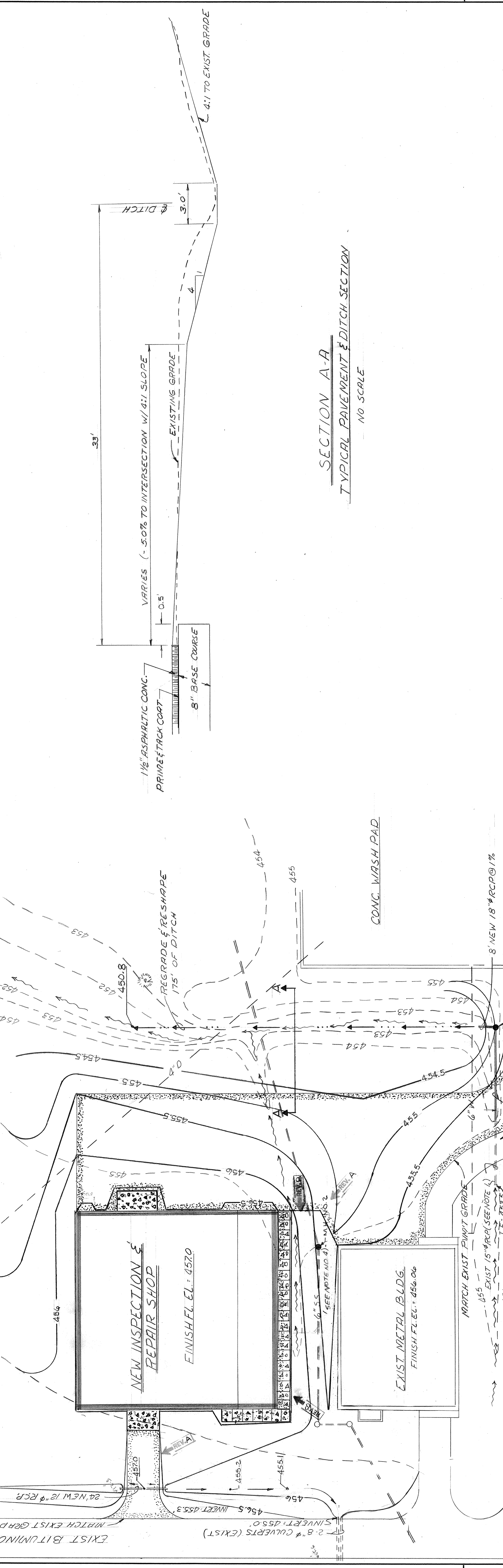
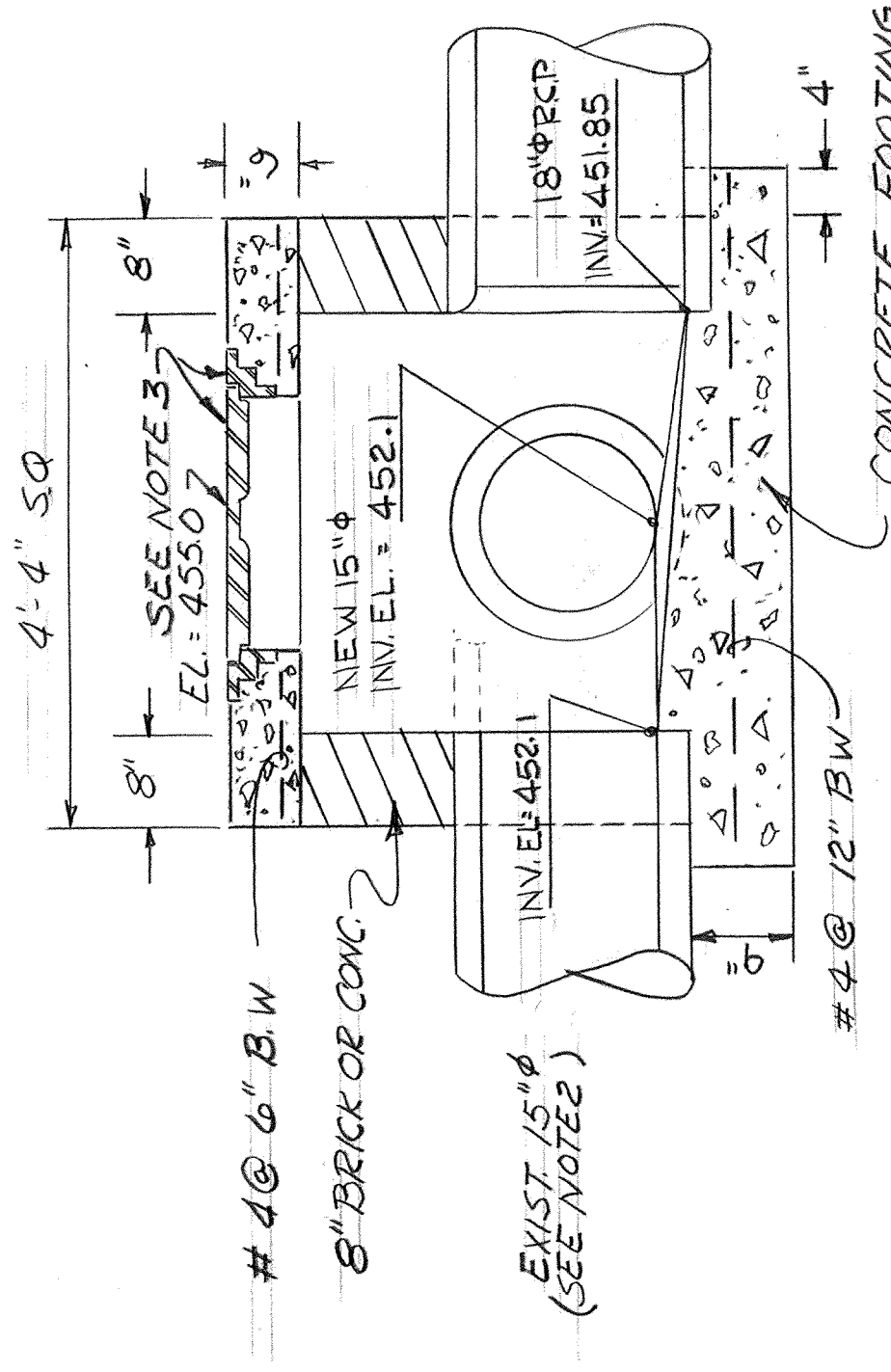


LET	REVISIONS	DATE	APPROVED
A	PAVED ACCESS ROAD ADDED NEW MH. ADDED EXISTING ROAD LOCATION CHANGED	11/2/72	Handwritten
B	DWG. CORRECTED TO AS SHOWN	7-24-73	H.W.M.

DESIGNED BY: Fischer	DEPARTMENT OF THE NAVY	NAVAL FACILITIES ENGINEERING COMMAND
DRAWN BY: Fischer	SOUTHERN DIVISION	CHARLESTON, S.C.
CHECKED BY: PAYSINGER	AIR NATIONAL GUARD - MUNICIPAL AIRPORT FT. SMITH, ARKANSAS	
IN CHARGE: PAYSINGER	AIRCRAFT ENGINE INSPECTION	
NO. ERROR	AND REPAIR SHOP	
UNDESIGNED BY: [Signature]	GRADING & DRAINAGE PLAN	
APPROVED: [Signature]	SIZE: F	CODE IDENT NO.: 80091
	NAVAFAC DRAWING NO.: 5017395	CONST. CONTR. NO.: N 62447-70-C-0586
	DATE: 11-16-71	SHEET 13 OF 13
	SCALE: GRAPHIC	SPEC: 06-70-0586



SECTION A-A
TYPICAL PAVEMENT & DITCH SECTION
NO SCALE



MANHOLE DETAILS
NO SCALE

GRADING & DRAINAGE PLAN
1" = 20'

LEGEND

- EXIST
- NEW
- CONTOURS
- SANITARY SEWER
- DRAIN LINE
- ASPHALT PAVEMENT
- CONCRETE PAVEMENT
- DRAINAGE SWALES
- MANHOLE

NOTES

1. REMOVE EXISTING 15" R.C.P. AND RELAY AT NEW GRADE AND ALIGNMENT. PATCH EXIST PAVEMENT WHERE CUT.
2. REMOVE EXIST 15" R.C.P. AS NECESSARY TO OBTAIN NEW ALIGNMENT.
3. FRAME AND COVER IN ACCORDANCE WITH FED. SPEC. RE-F-6816 FRAME - TYPE II - SIZE 22A COVER - TYPE A - SIZE 22A
4. MANHOLE NO. 2 TO BE SIMILAR TO MH NO. 1 EXCEPT MH NO. 2 IS BUILT OVER EXIST. 6" PIPE, INVERT EL. APPROX. 452.8, TOP EL. TO MATCH PAVMT EL.

GRAPHIC SCALE

