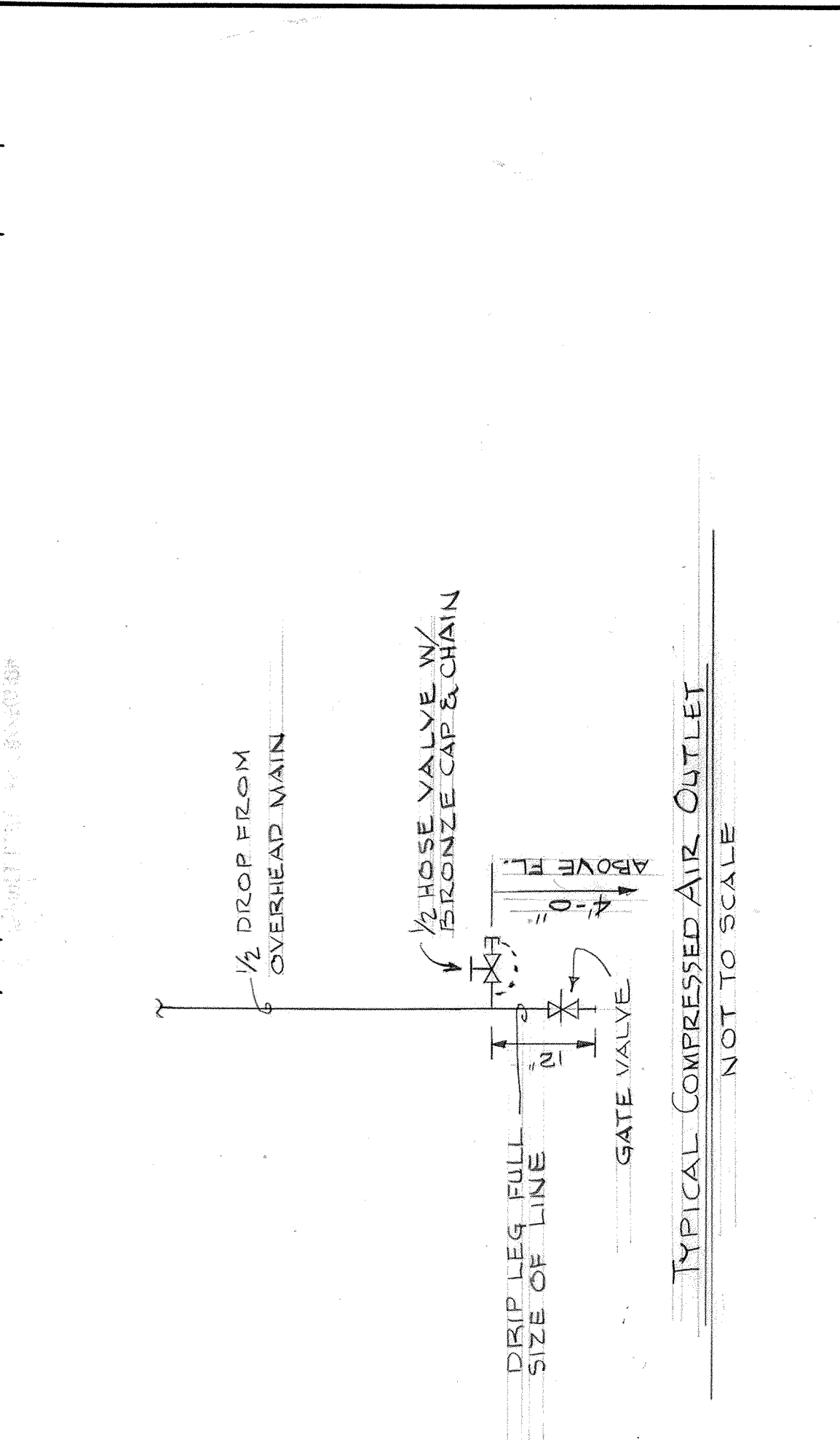


REV. NO.	DATE	DESCRIPTION	APPROVED
1	1/22/72	GENERAL REVISIONS	GIBSON
2	7/24/73	DWG. CORRECTED TO AS-BUILT	H.M.M.



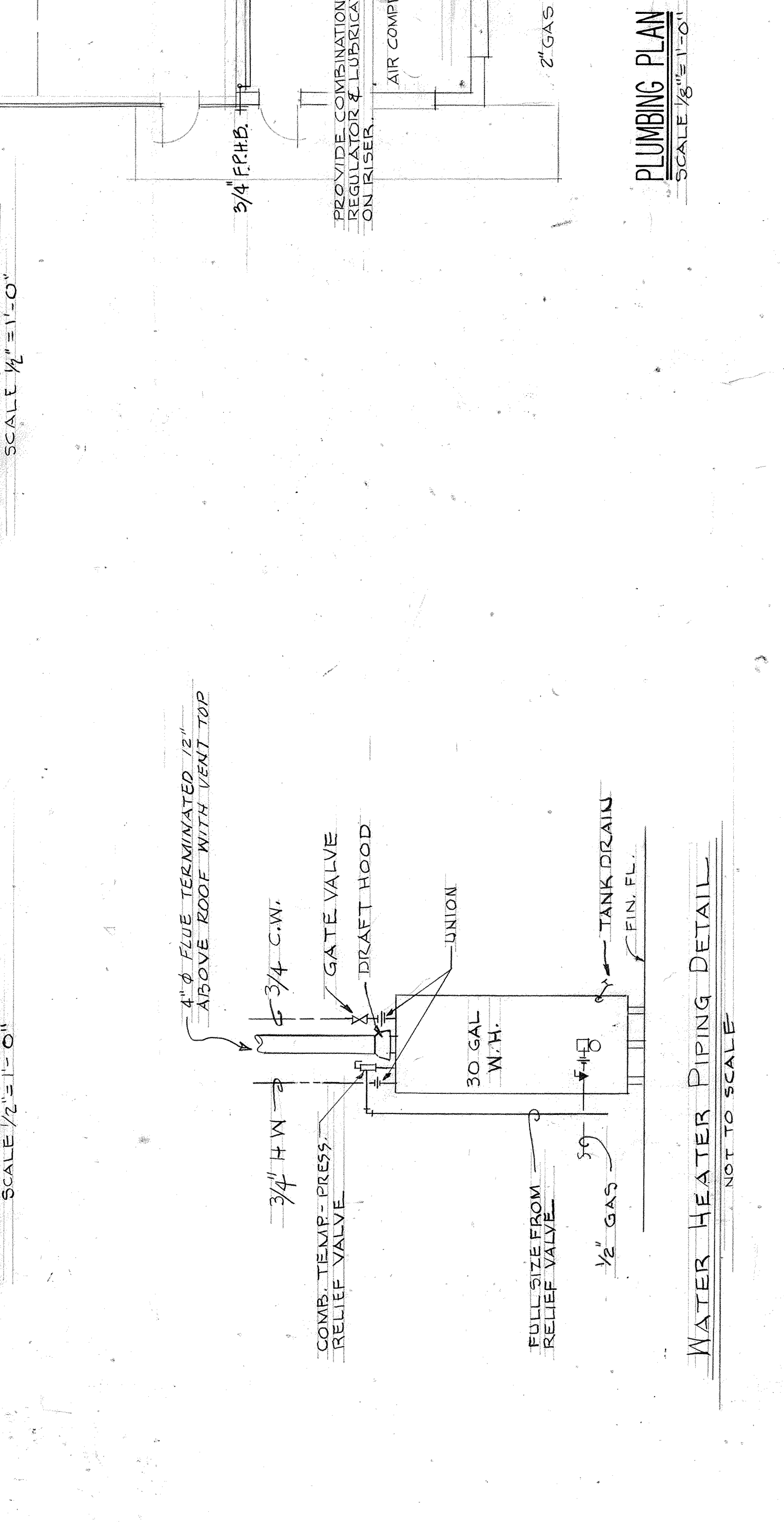
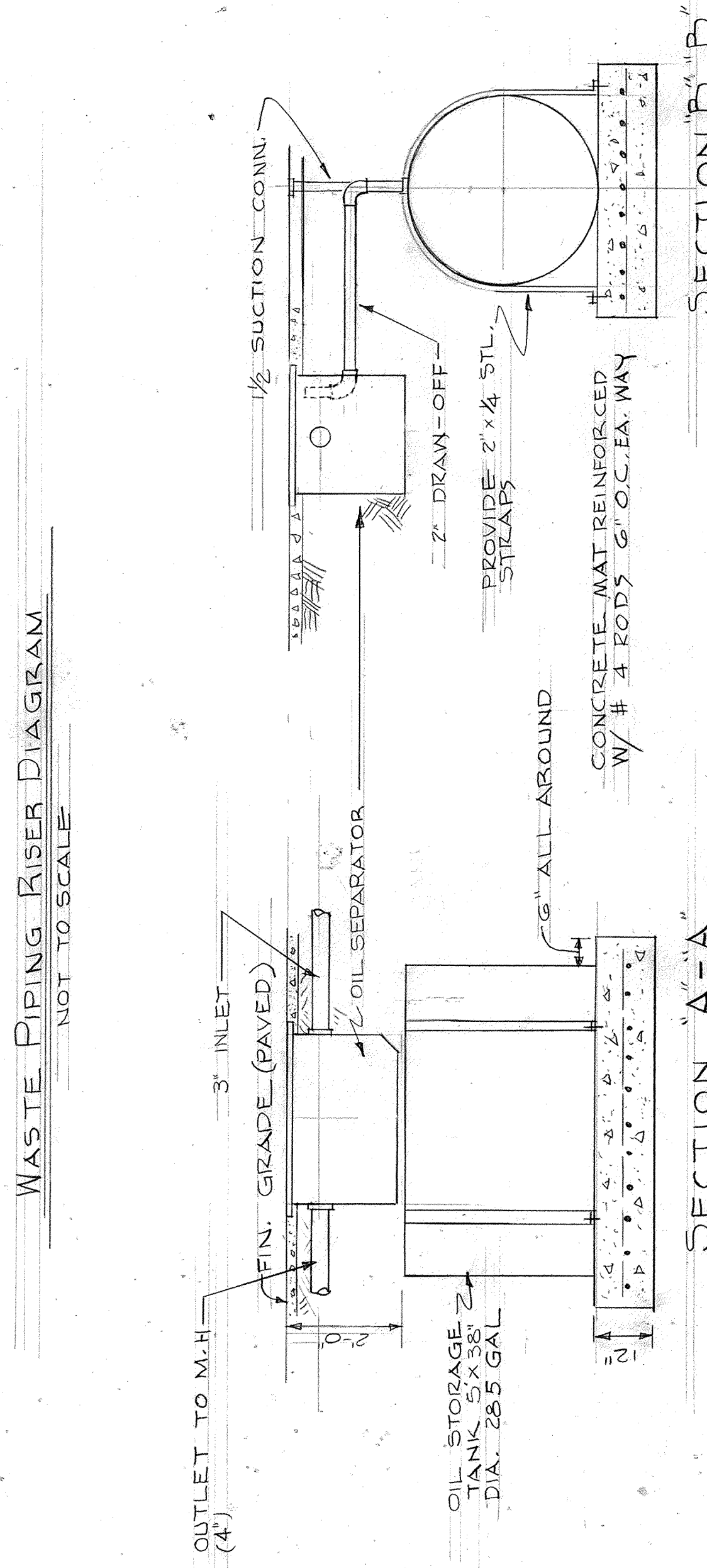
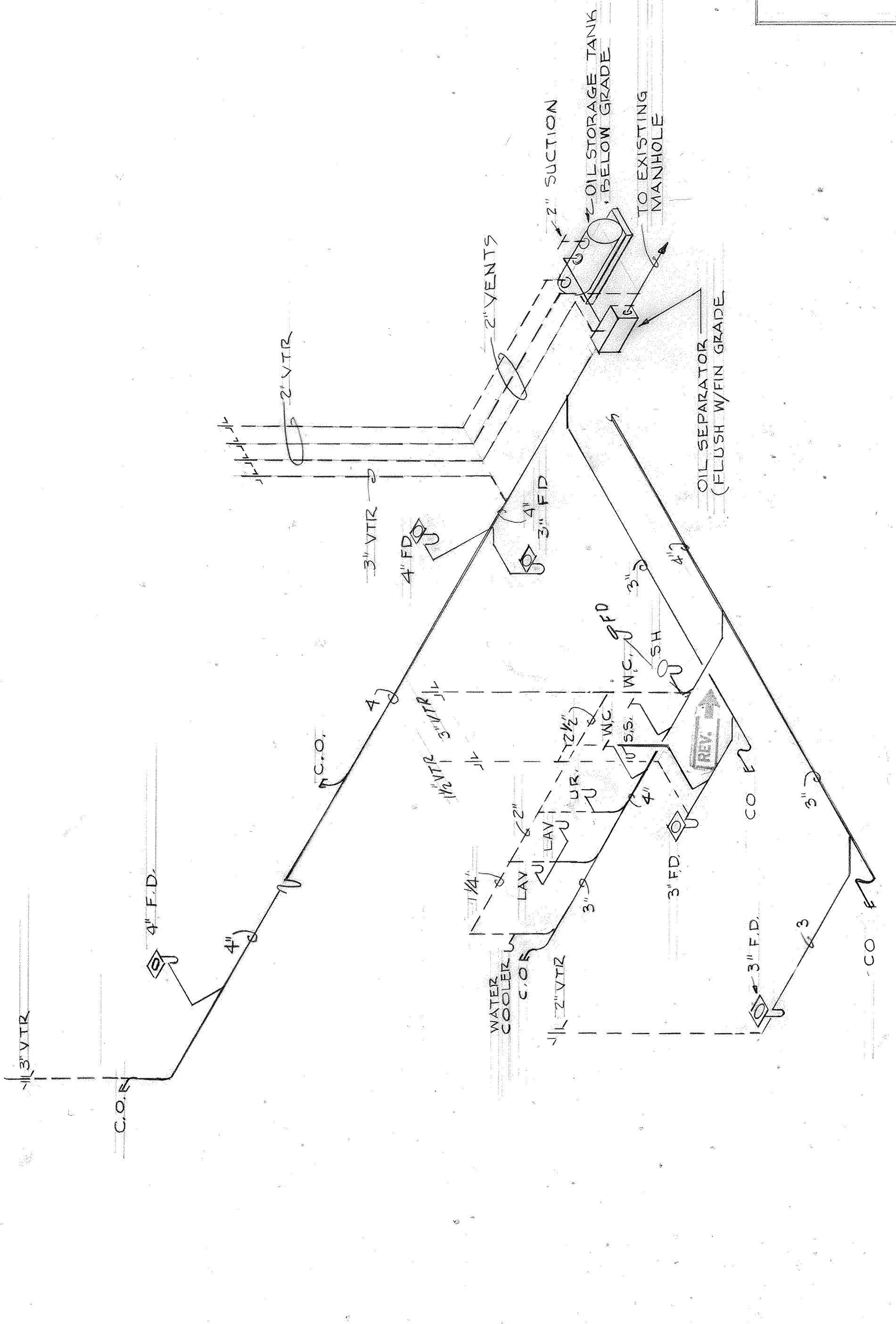
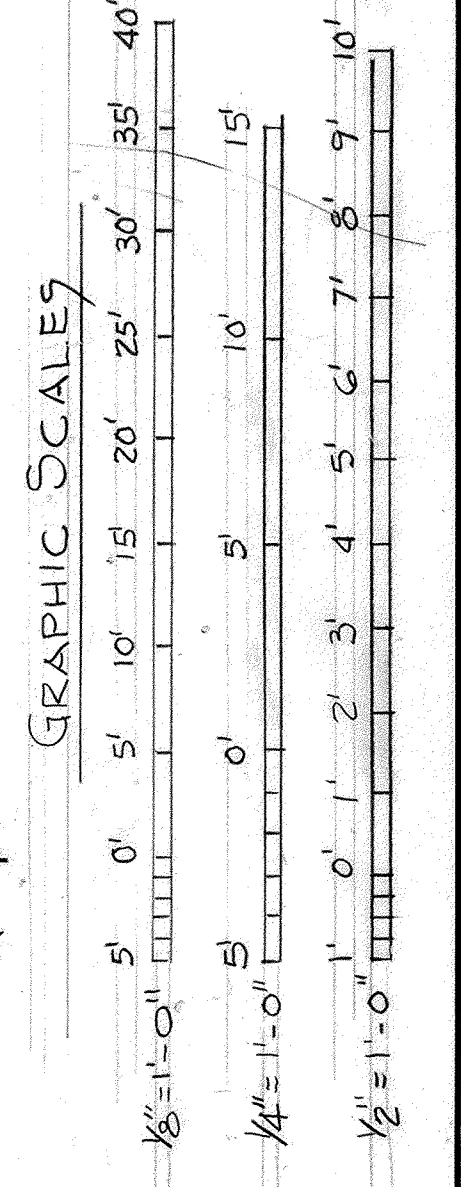
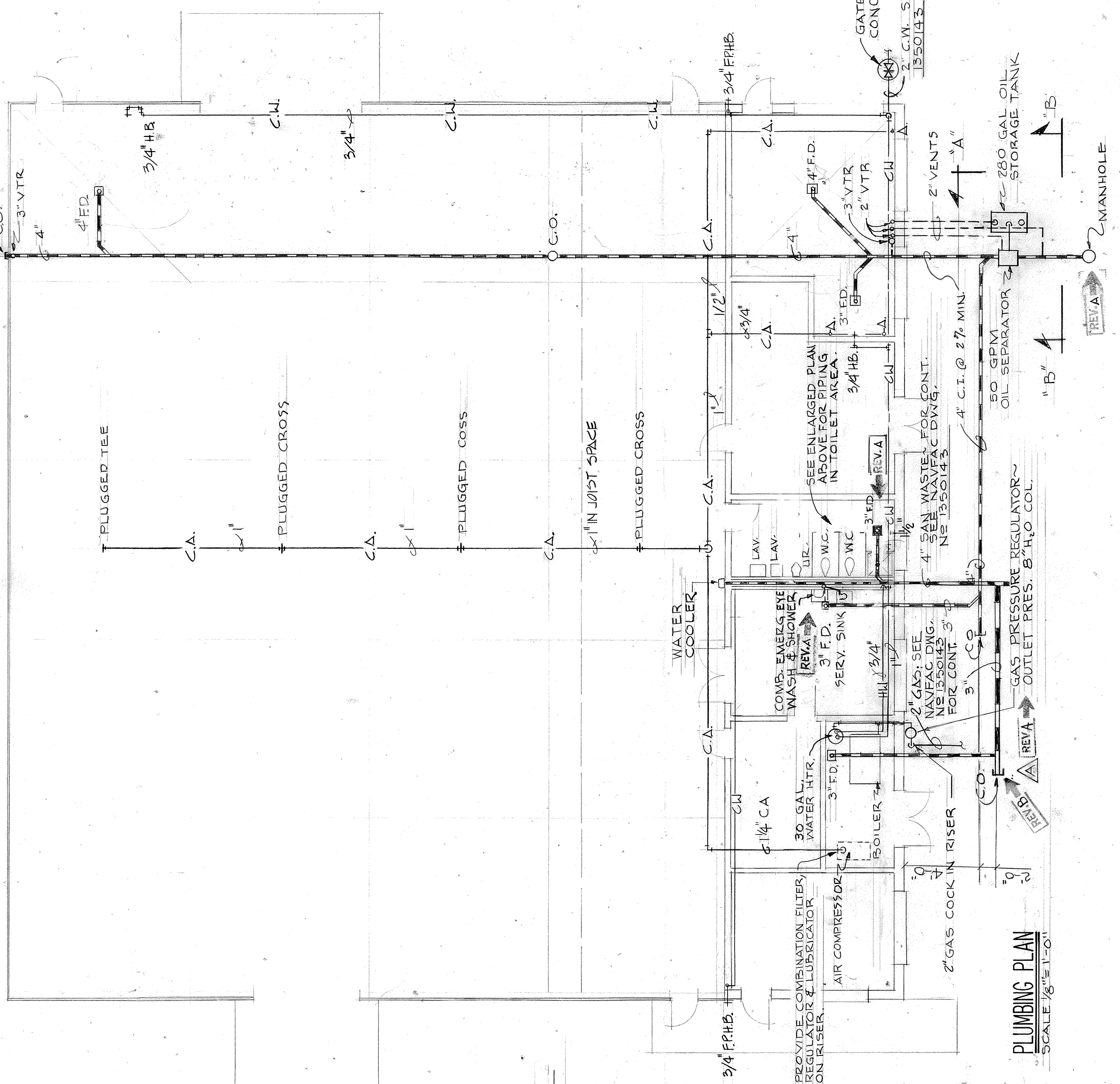
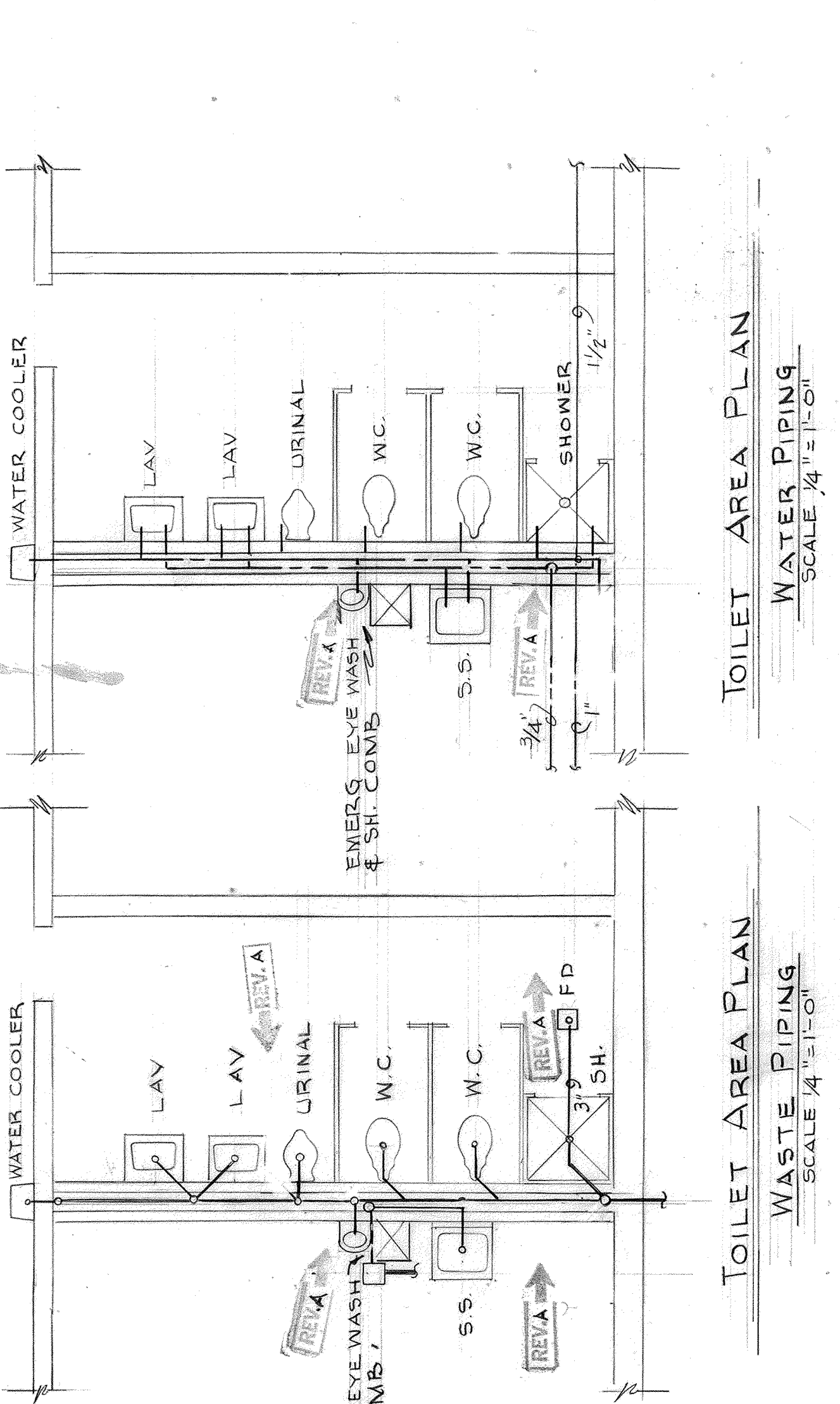
FIXTURE	HOT WATER	COLD WATER	VENT	WASTE
WATER CLOSET	1"	1"	3"	4"
LAVATORY	1/2"	1/2"	1 1/2"	2"
URINAL	3/4"	3/4"	1 1/2"	2"
SERVICE SINK	1/2"	1/2"	2"	3"
SHOWER	1/2"	1/2"	1 1/2"	1 1/2"
EMERGENCY SH.	1"	1"	2"	4"
EYE WASH	1/2"	1/2"	1 1/2"	1 1/2"
WATER COOLER	3/2"	3/2"	1 1/2"	1 1/2"

**GENERAL NOTES**

1. PROVIDE 3/4" C.I. TO H.W. HTR. & TO EACH HOSE BIBB.
2. PROVIDE 1/2" C.I. TO BOILER.
3. PROVIDE 1/2" GAS TO WATER HEATER.
4. PROVIDE 1/4" GAS TO BOILER.

**LEGEND OF SYMBOLS**

- A- COMPRESSED AIR OUTLET (GATE VALVE)
- CA- COMPRESSED AIR LINE
- G- GAS
- CW- COLD WATER
- HW- HOT WATER
- CO- CLEAN-OUT
- H.B- HOSE BIBB
- F.P.H.B- FREEZE-PROOF HOSE BIBB
- F.P. FLOOR DRAIN
- H.C- WATER CLOSET
- V.T.R.- VENT THROUGH ROOF
- N.I.C. NOT IN CONTRACT



DEPARTMENT OF THE NAVY - NAVAL FACILITIES ENGINEERING COMMAND  
SOUTHERN DIVISION  
AIR NATIONAL GUARD - MUNICIPAL AIRPORT, FT. SMITH, ARKANSAS  
AIRCRAFT ENGINE INSPECTION AND REPAIR SHOP

MAHAFFEY & ASSOC.-ENGINEERS  
FAYETTEVILLE, ARKANSAS

DESIGNER: MAHAFFEY & ASSOC.  
CHECKED BY: [Signature]  
DATE: 1/16/71

APPROVED BY: [Signature]  
DATE: 1/16/71

OFFICER IN CHARGE: [Signature]  
DATE: 1/16/71

CONTRACT NO. N64467-70-C-0586  
SIZE: 18" x 24" (11-01)  
SHEET 10 OF 13

RECORD DRAWING  
DATE: 8 JUL 1973