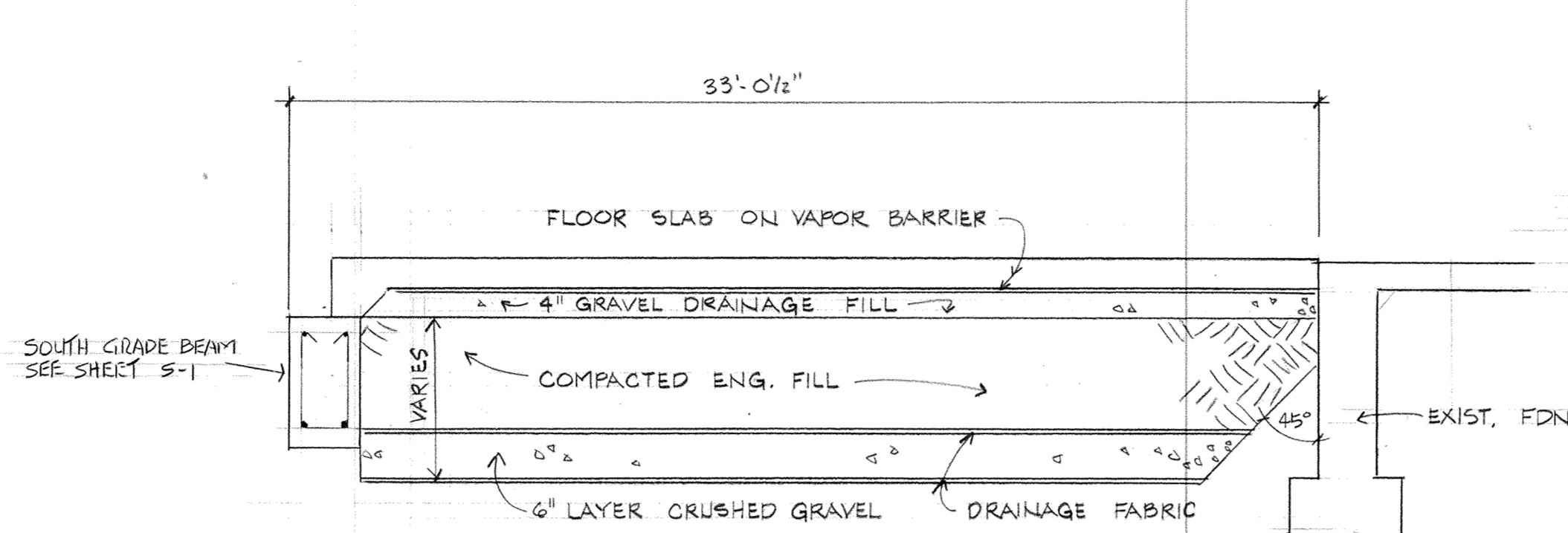
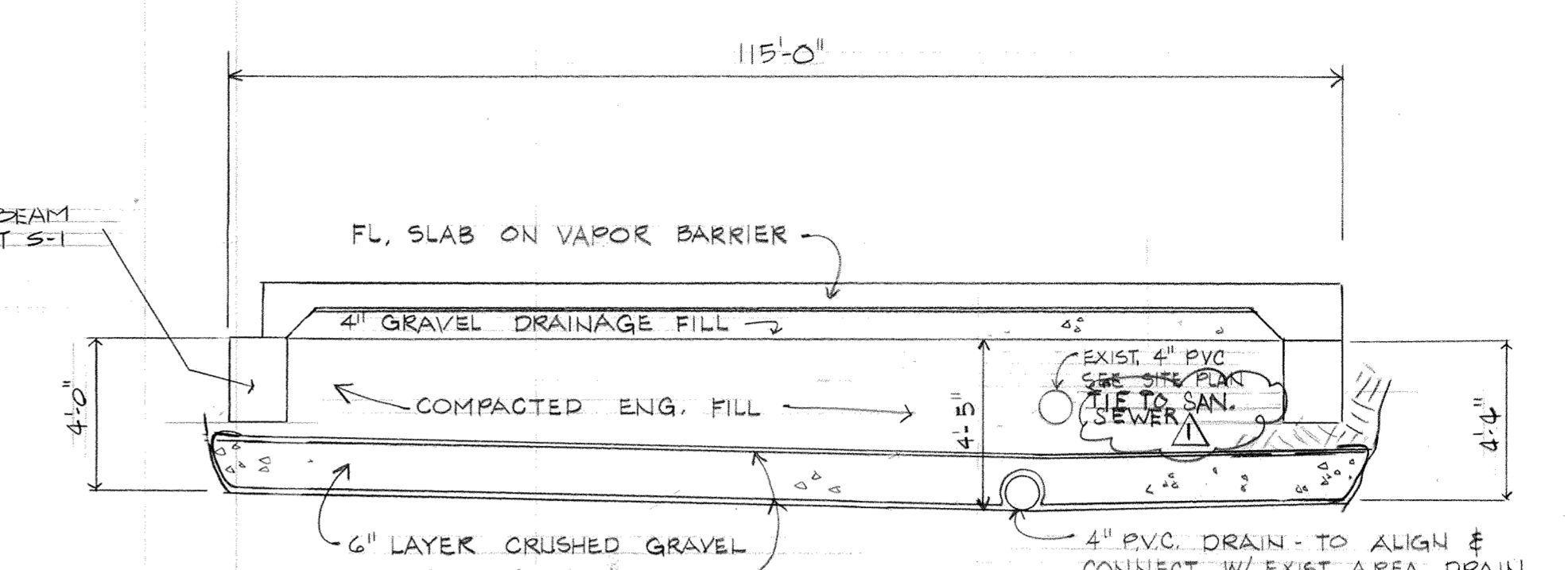


1 TYP. INTERIOR COL. DETAIL
NTS.

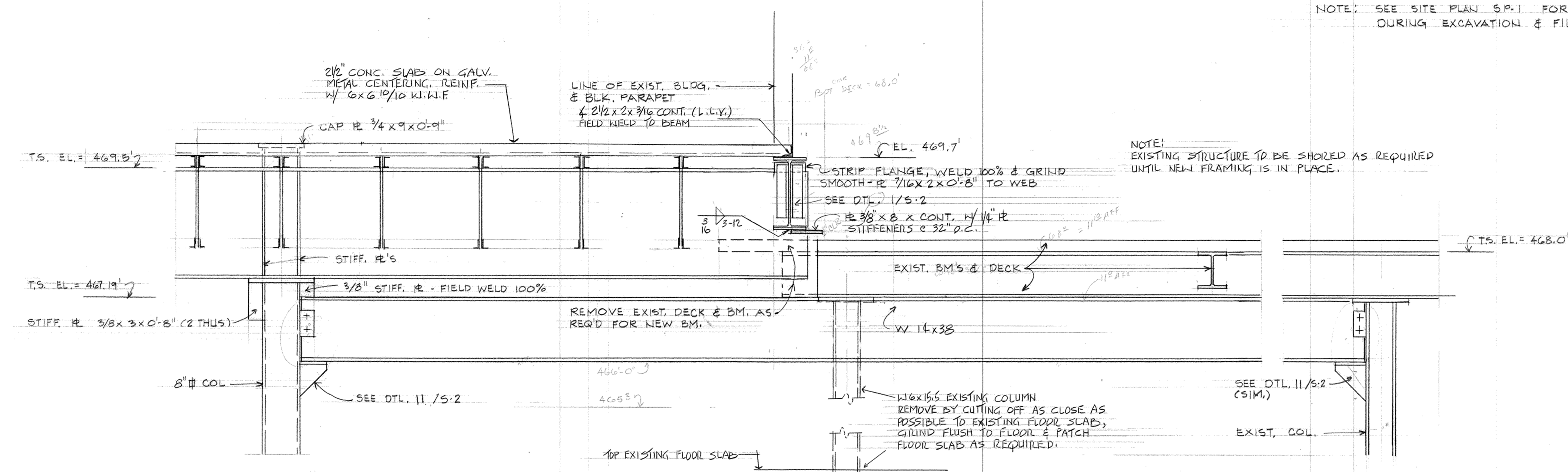


2 SCHEMATIC PROFILE OF UNDERGROUND DRAINAGE SYSTEM
NTS.



3 SCHEMATIC PROFILE OF UNDERGROUND DRAINAGE SYSTEM
NO SCALE

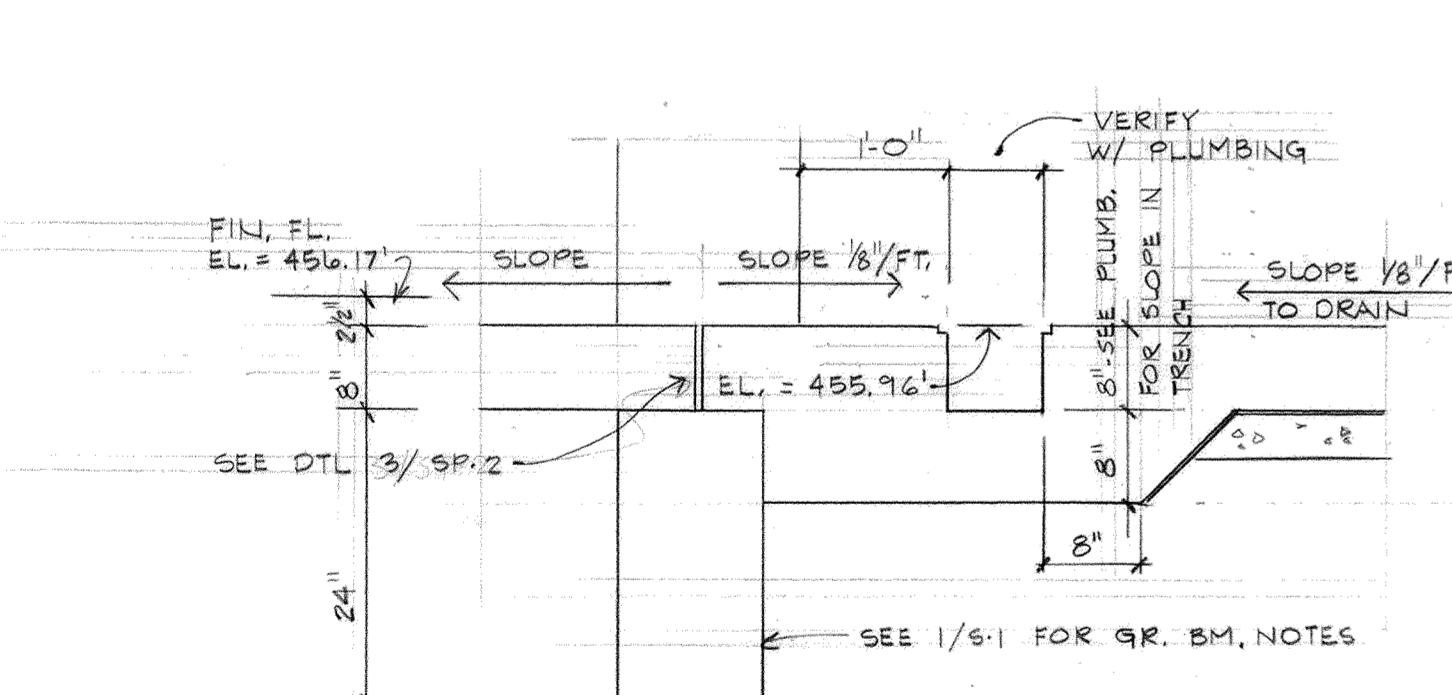
NOTE: SEE SITE PLAN SP-1 FOR UTILITIES THIS AREA. PROTECT & MAINTAIN SERVICE DURING EXCAVATION & FILL OPERATION. NOTE 6" WATER MAIN.



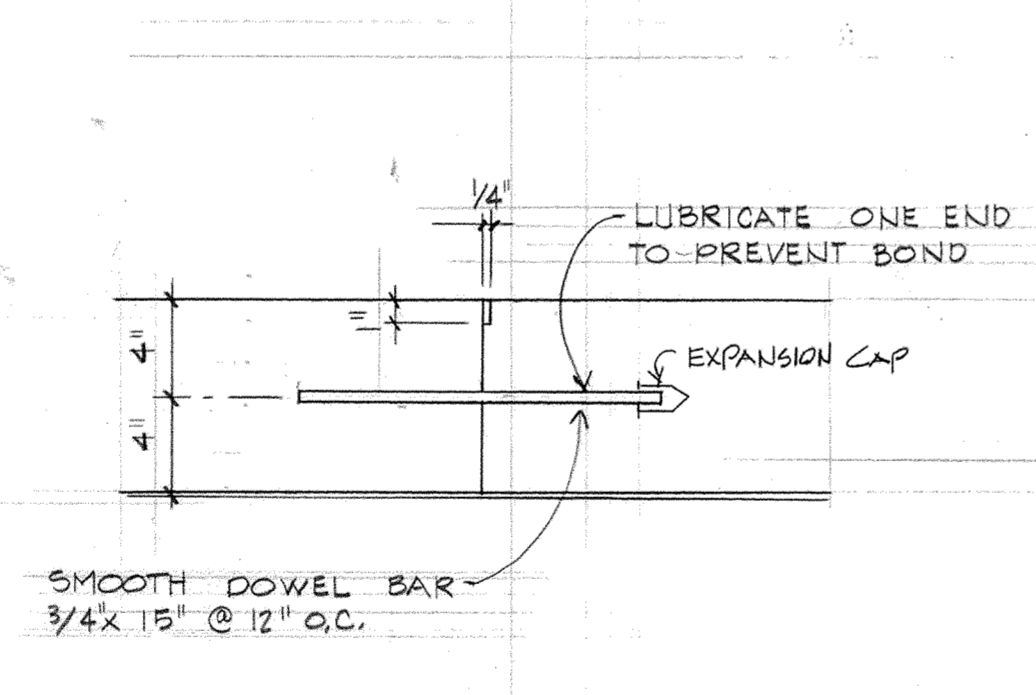
4 DETAIL
3/4" = 1'-0"

5 DETAIL
3/4" = 1'-0"

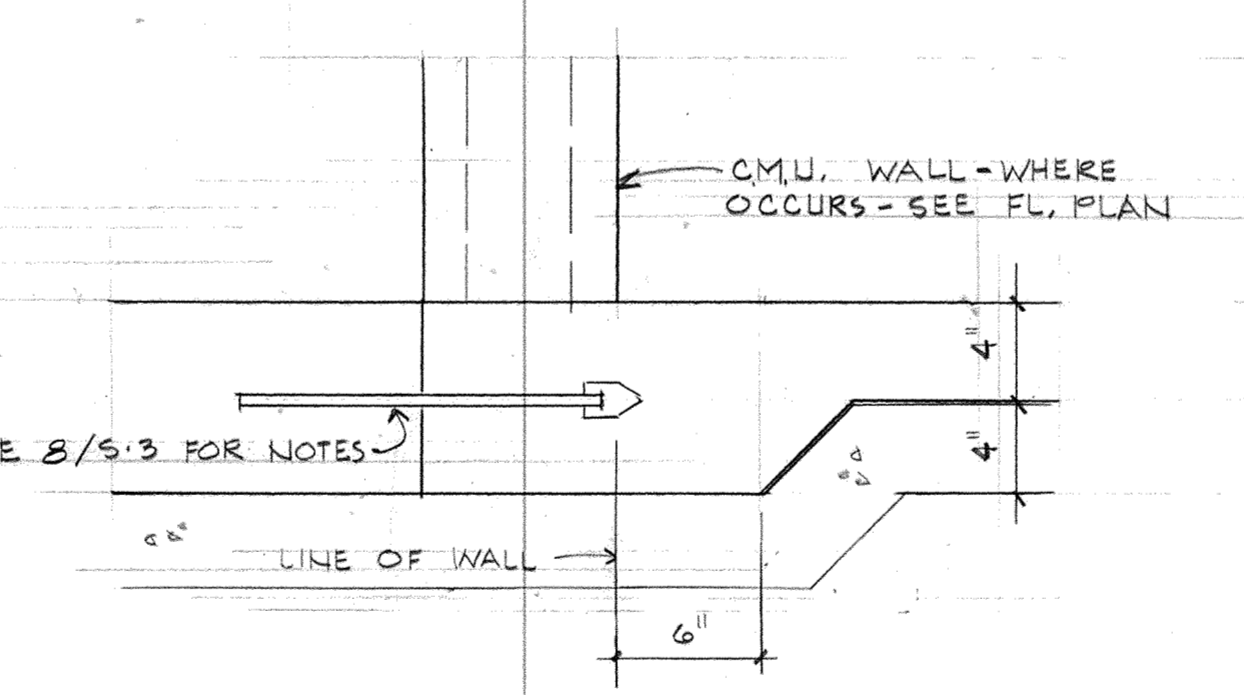
6 NOT USED



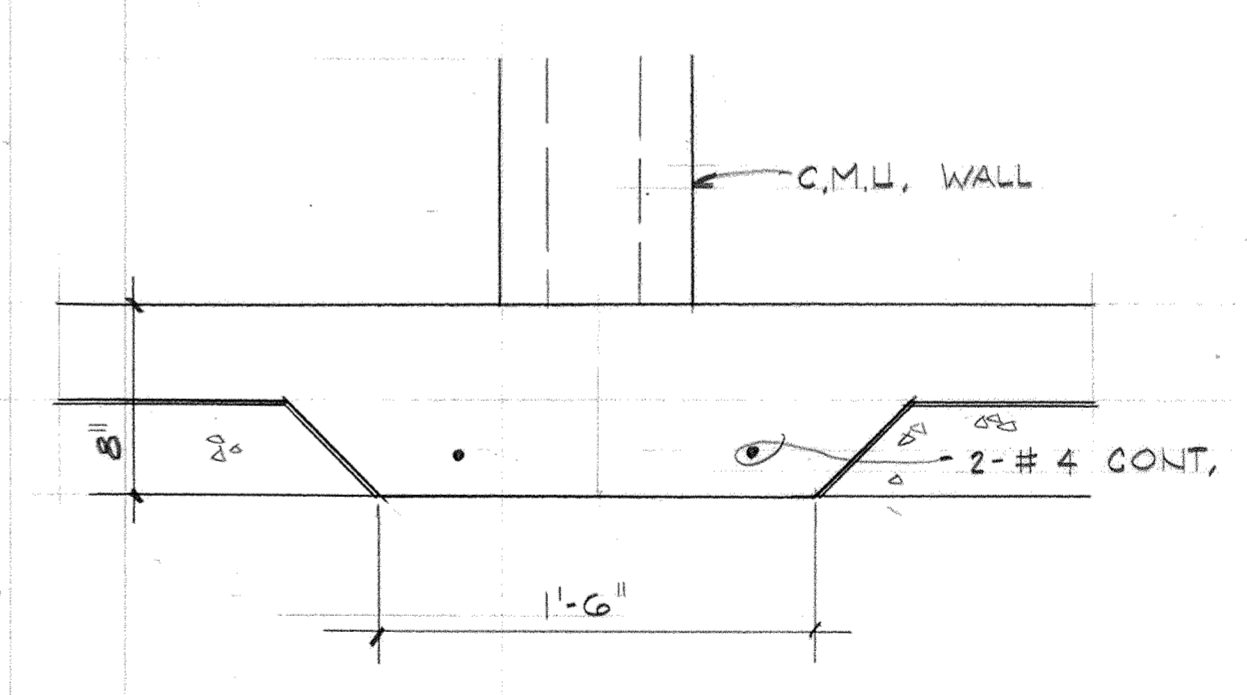
7 DTL @ OVERHEAD DOOR
3/4" = 1'-0"



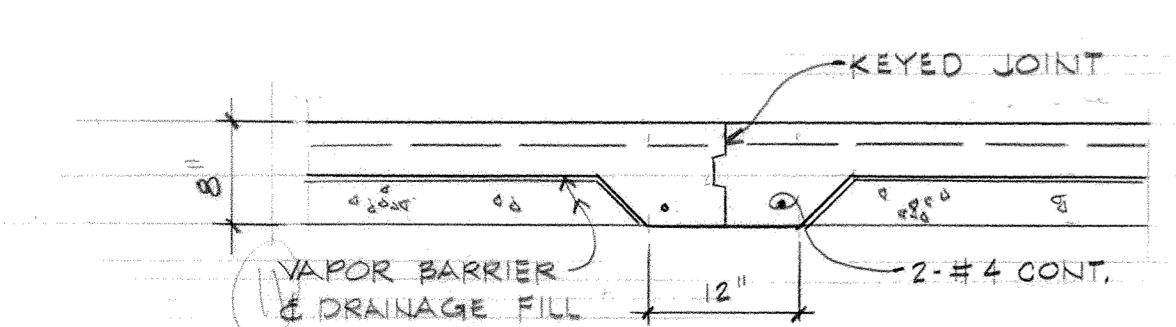
8 JOINT DETAIL
1/2" = 1'-0"



9 JOINT DETAIL
1/2" = 1'-0"

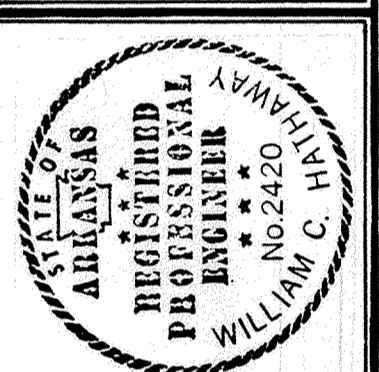


10 THICKENED SLAB DTL.
1/2" = 1'-0"



11 JOINT DETAIL
3/4" = 1'-0"

ADDITION / ALTERATION OF
FIRE STATION
ARKANSAS AIR NATIONAL GUARD
FORT SMITH, ARKANSAS



architecture plus
120 North 9th Street • Fort Smith, Arkansas • 501/783-8395

DETAILS

REVISIONS:
ASBUILT

PROJECT: 88-18

DATE: 7-24-89

5-3 OF 3

