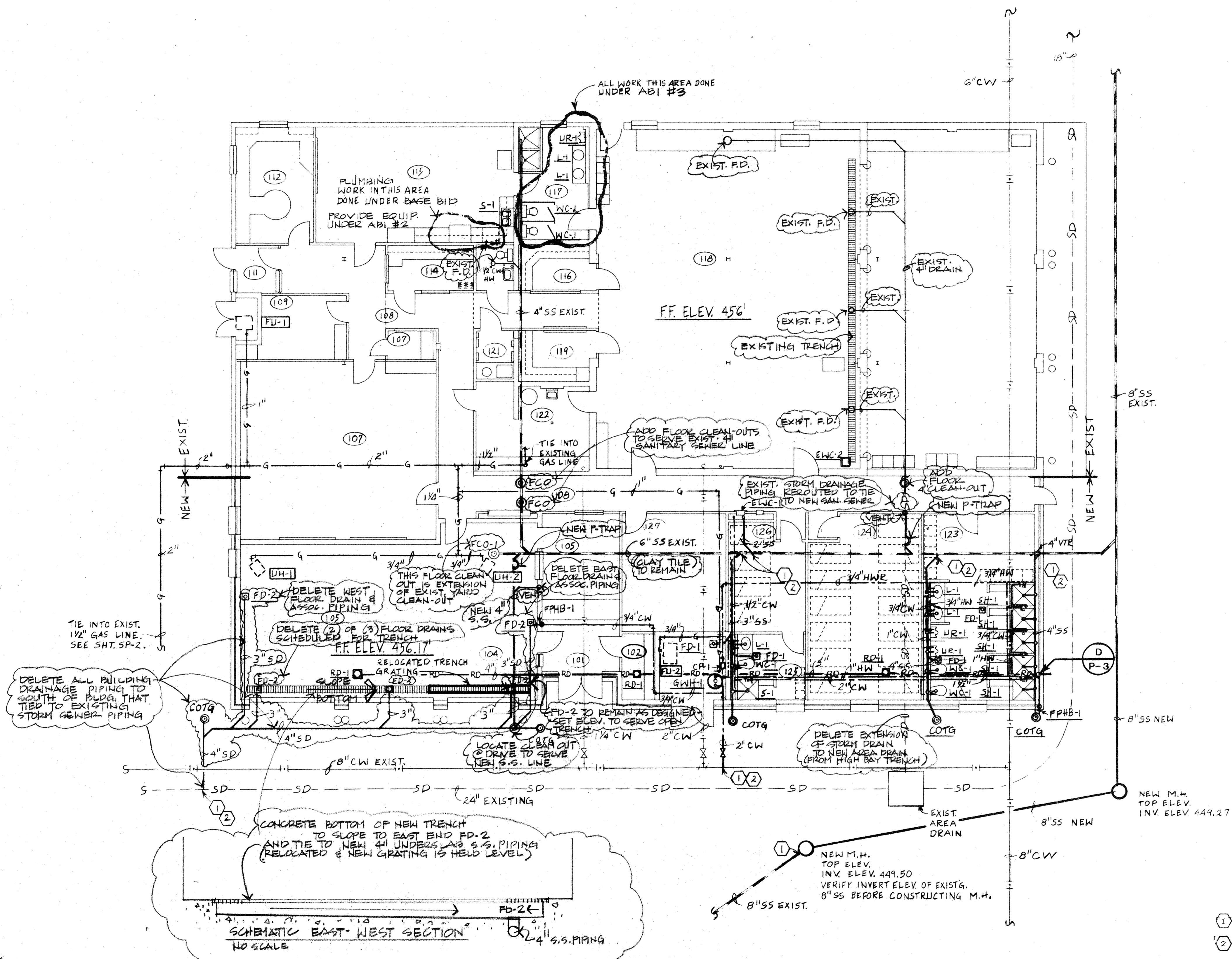




ADDITION / ALTERATION OF
FIRE STATION
 ARKANSAS AIR NATIONAL GUARD
 FORT SMITH, ARKANSAS



PLUMBING LEGEND				
---SD---	EXIST'G STORM DRAIN	⊙	CLEAN OUT TO GRADE (COTG)	
---	EXIST'G SANITARY DRAIN	⊕	WALL CLEAN OUT (WCO)	
---	DRAIN, SANITARY SEWER (ISS)	⊕	TEMPERATURE & PRESSURE (T&P) RELIEF VALVE	
---	COLD WATER (CW)	⊕	WATER HAMMER ARRESTOR	
---	HOT WATER (HW)	⊕	CONDENSATE DRAIN	
---	GAS (GS)	⊕	PRESSURE REDUCING VALVE (PRV)	
---	VENT (V)	⊕	UNION	
---	HOT WATER RETURN (HWR)	⊕	CHECK VALVE	
---	PIPE ELEVATION CHANGE	⊕	EXIST'G COLD WATER	
---	PIPE RISER	⊕	EXIST'G HOT WATER	
---	GATE VALVE	⊕	EXIST'G GAS	
---	FROST PROOF HOSE BIBB (FPHB)	⊕	EXIST'G VENT	
---	FLOOR DRAIN (FD)	⊕	RD	ROOF DRAIN
---	SAFE WASTE DRAIN (SWD)	⊕		
---	FLOOR CLEAN OUT (FCO)	⊕		

GENERAL PLUMBING NOTES

- 1 VERIFY LOCATION OF EXISTING.
- 2 ALL KNOWN PLUMBING UTILITIES FROM EXST'G SITE PLANS ARE SHOWN. PROTECT FROM DAMAGE DURING CONSTRUCTION. DEPTH NOT KNOWN, FIELD VERIFY.

☁ = REVISED OR NEW INFORMATION FROM ISSUED FINAL DRAWINGS 10-28-91

PLUMBING PLAN
 SCALE: 1/8" = 1'-0"

REF: SEE SHIT P-3 FOR DETAILS & SCHEDULES

a+ architecture plus
 120 North 9th Street • Fort Smith, Arkansas • 501/763-6395
OMG O. MICHAEL GREEN ENGINEERING INC
 SUITE 610 FIRST PLACE • FAYETTEVILLE ARKANSAS • (501) 442-6622

REVISIONS:
 10-28-91
 REVISE STORM DRAIN
 SANITARY SEWER
 PIPING

PROJECT: 88-18

DATE: 7-24-91

SHIT P-2 of 3



ANG-CF