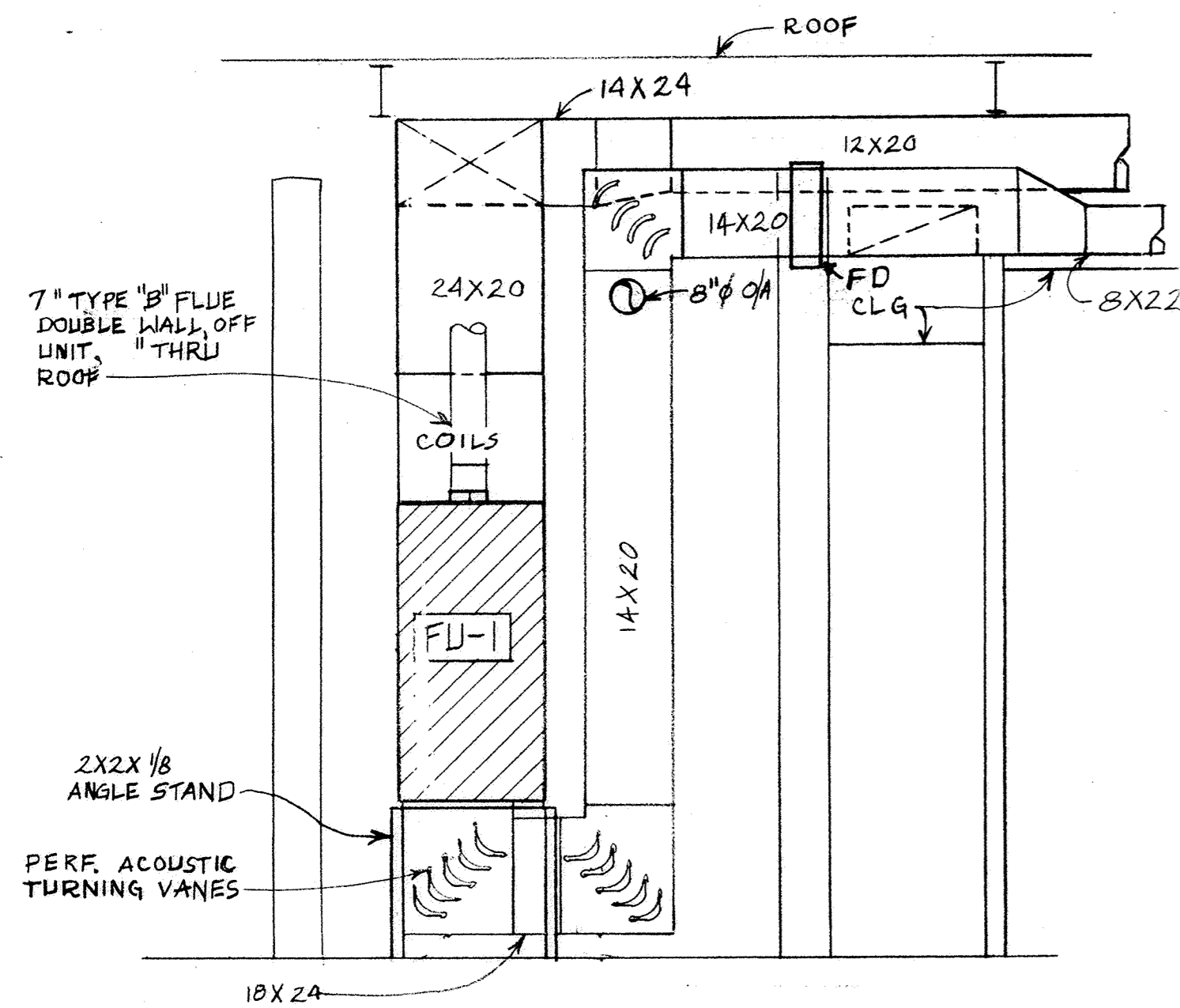
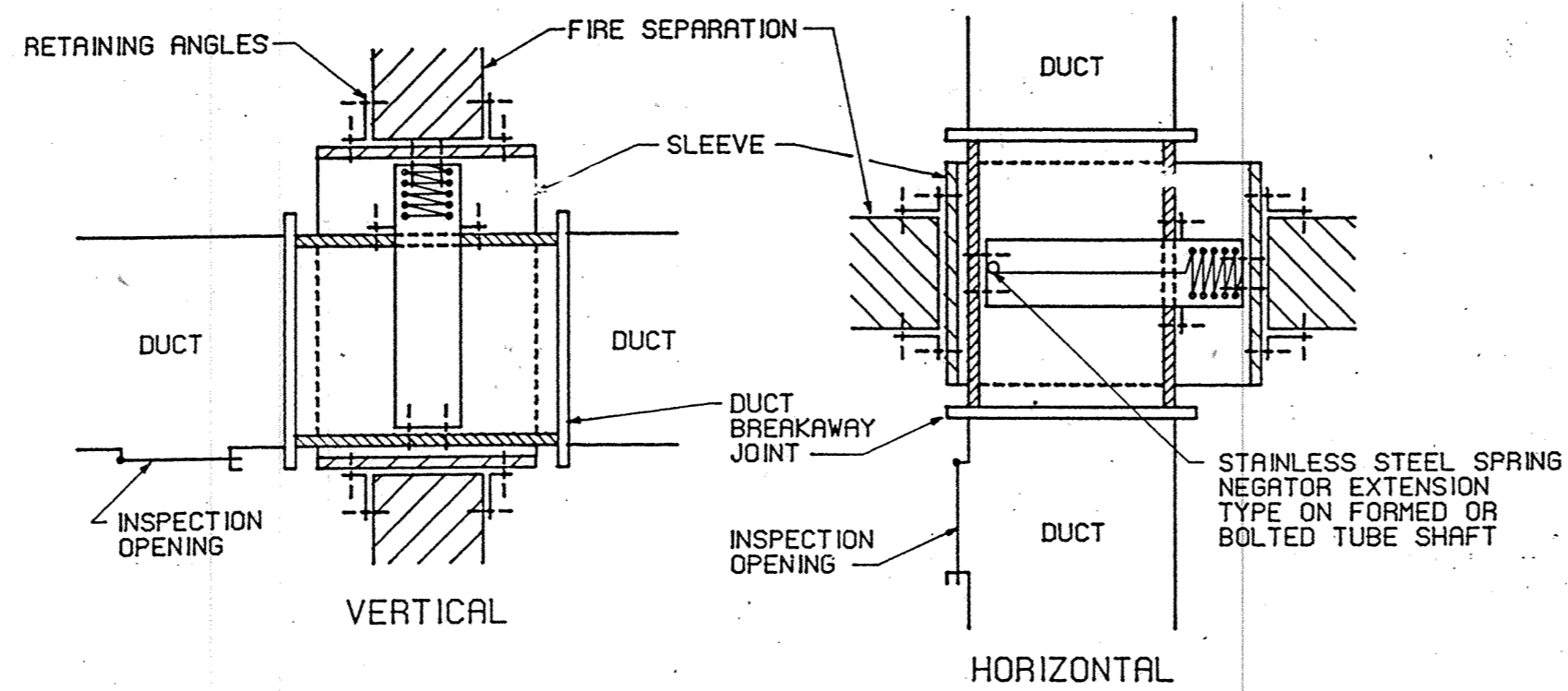


H DETAIL-TYPICAL VIBRATION ISOLATION
NTS

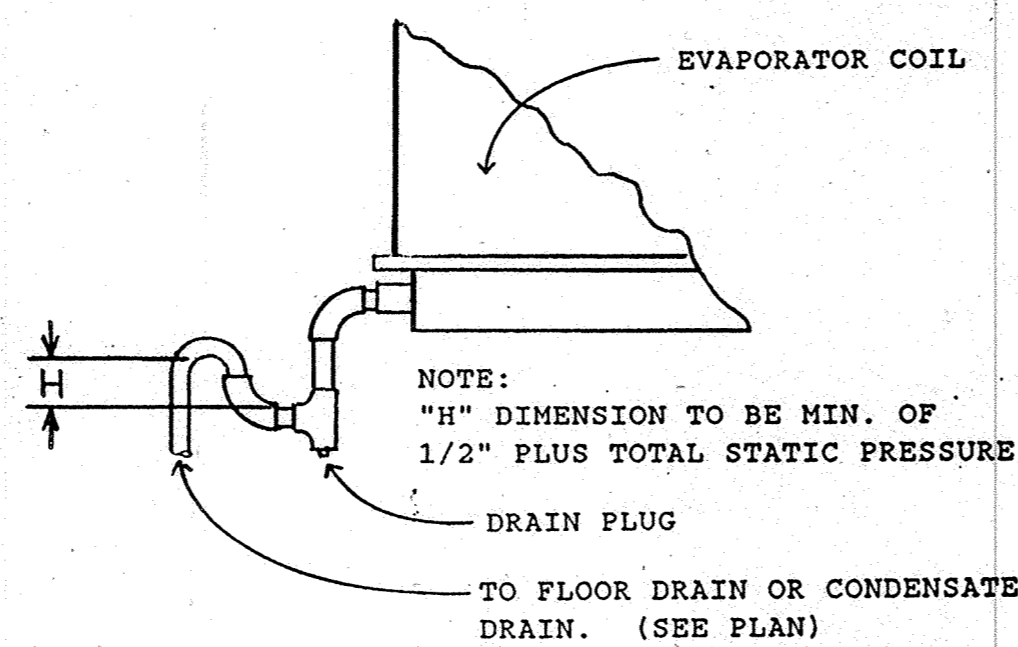


B SECTION
M-2 SCALE: 1/2" : 1'-0"

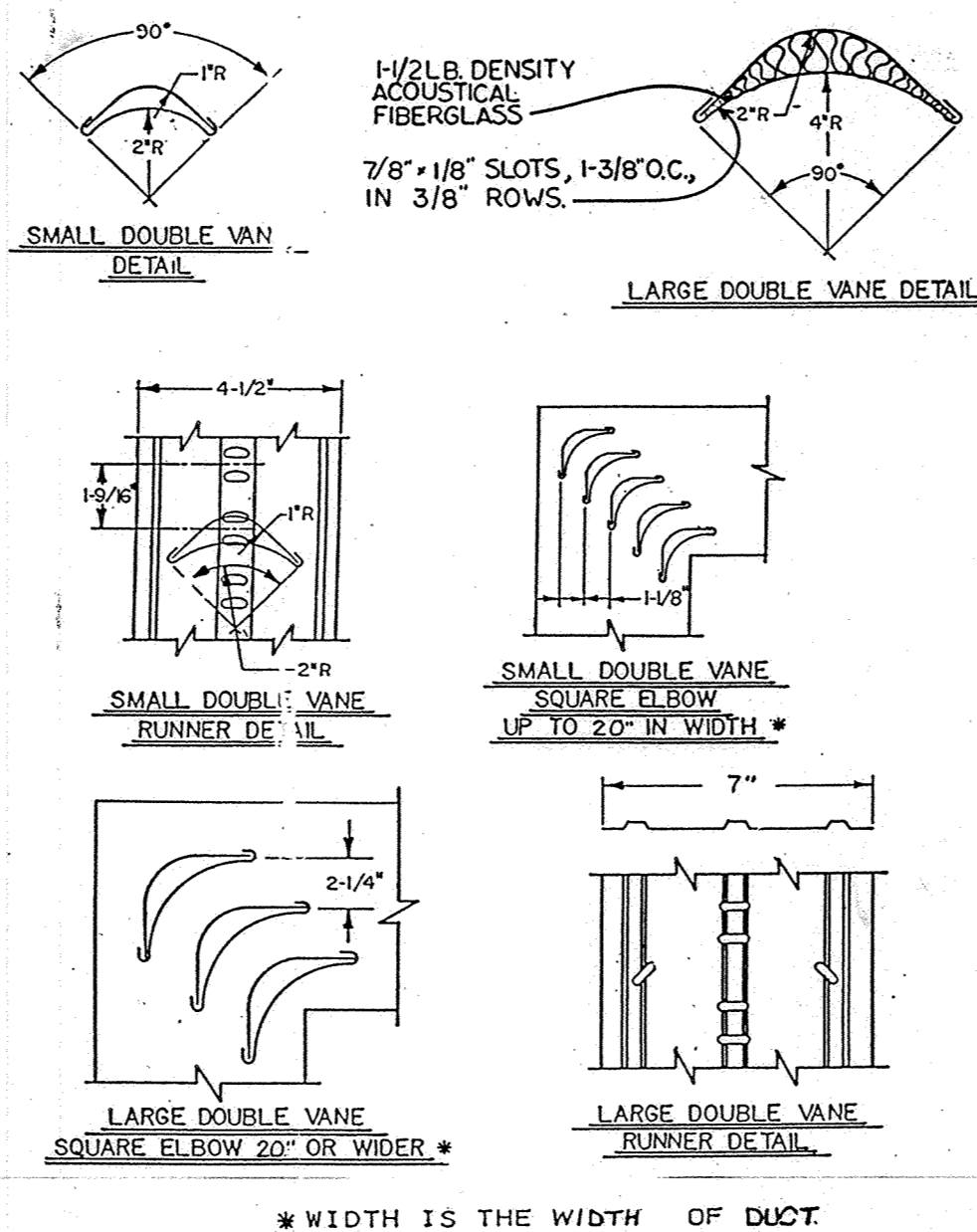


NOTE: USE TYPE B WITH 90% FREE AREA.

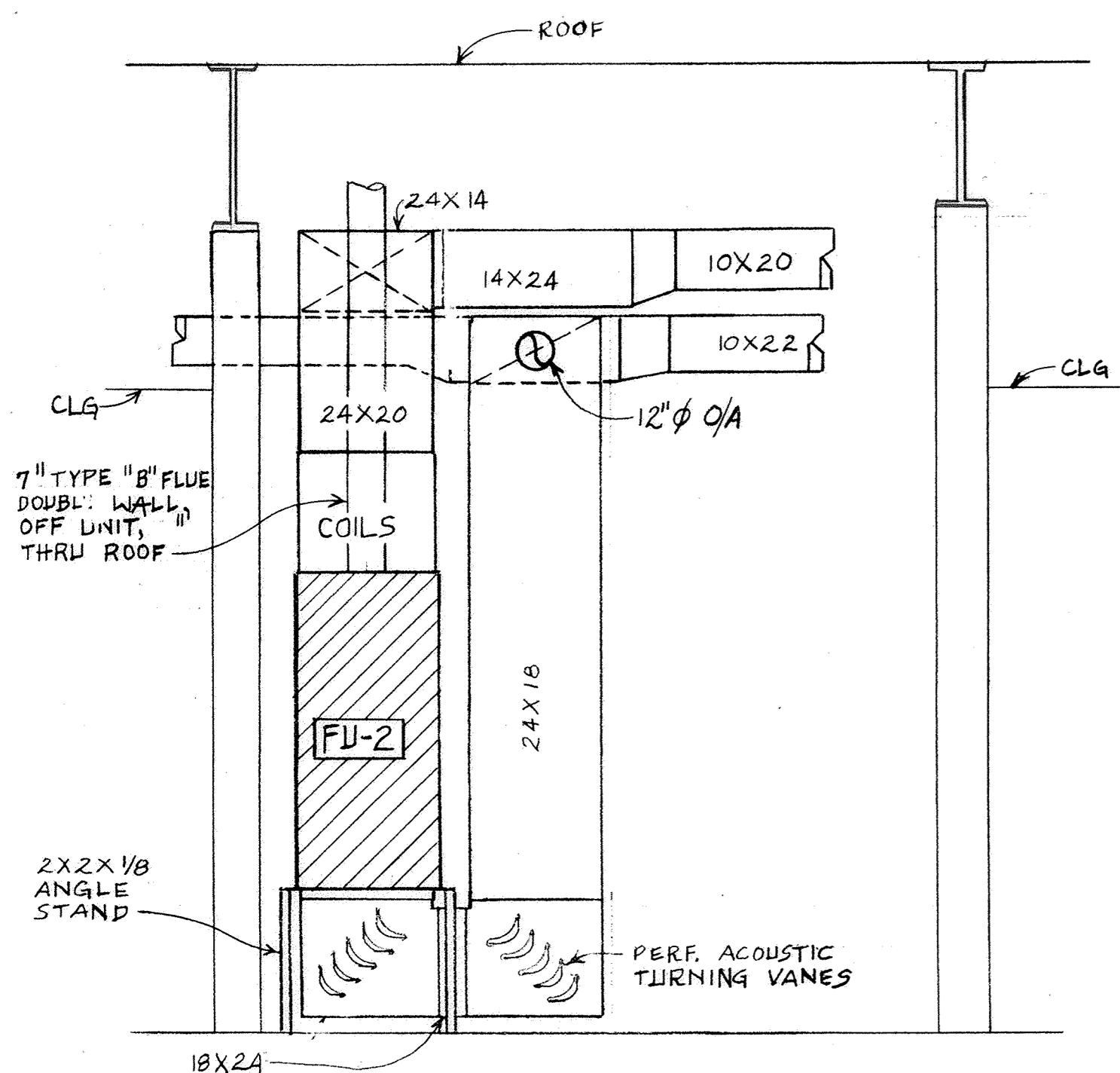
F FIRE DAMPER DETAIL
NTS



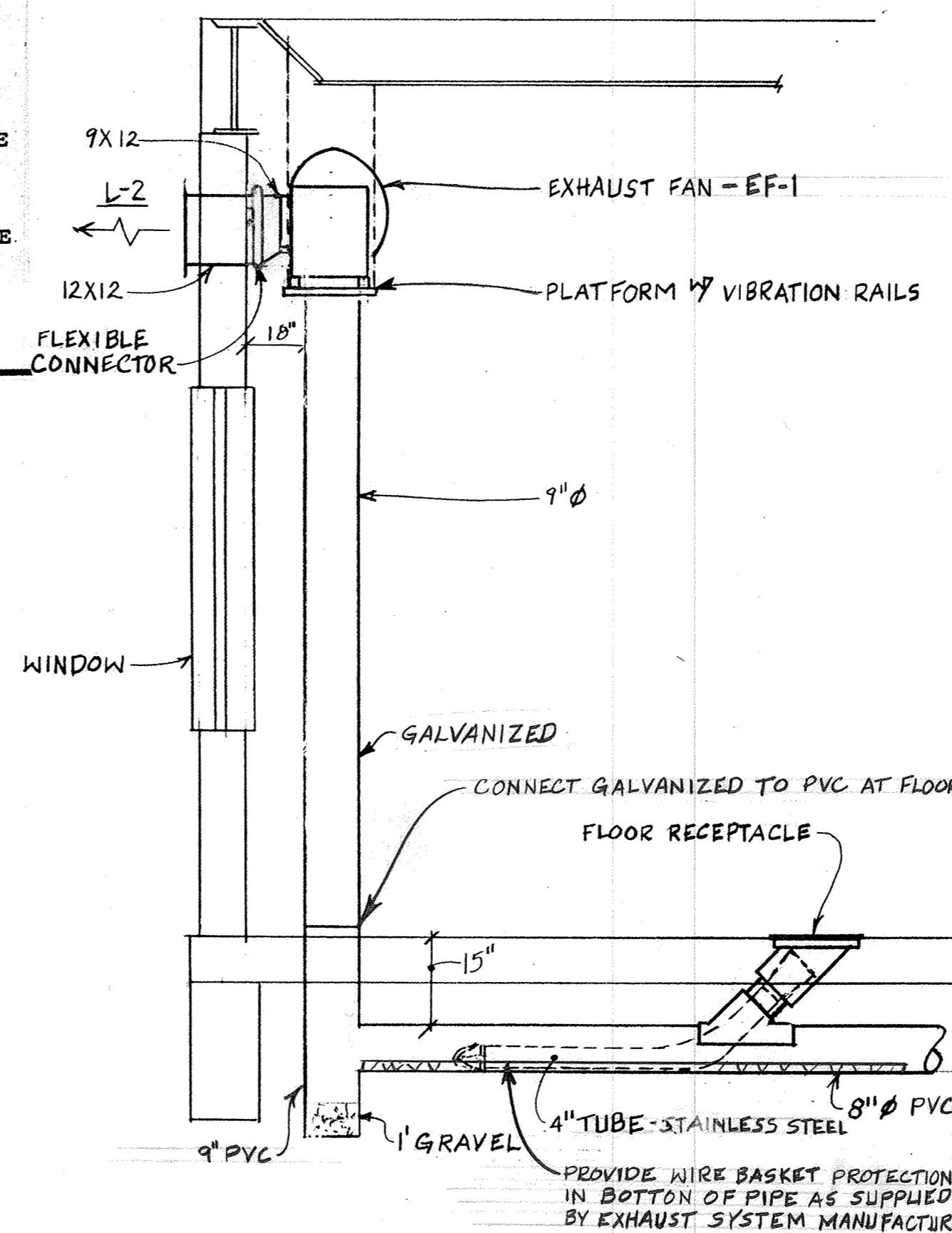
E DRAIN PAN TRAP DETAIL
NTS



D TURNING VANE CONSTRUCTION DETAIL
NTS



C SECTION
M-2 SCALE: 1/2" : 1'-0"



G DETAIL
M-2 SCALE: 1/2" : 1'-0"

MECHANICAL EQUIPMENT SCHEDULE

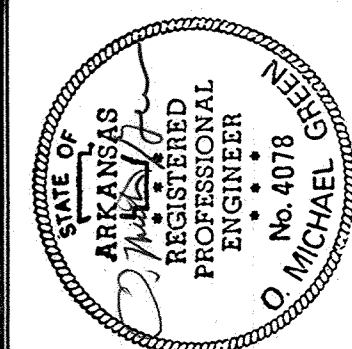
MARK	DESCRIPTION	MFR. MODEL	CAPACITIES	ELECTRICAL	COMMENTS
FU-1	GAS FURNACE UP FLOW	TRANE TUS140 A948	1600 CFM .5" SP 140 MBH IN 105 MBH OUT	120V/1PH 3/4 HP MOTOR	NOM 4 TON
FU-2	GAS FURNACE UP FLOW	TRANE TUS160A960	2000 CFM .5" SP 120 MBH IN 90 MBH OUT	120V/1PH 3/4 HP MOTOR	NOM 5 TON
CU-1	CONDENSING UNIT AIR COOLED	TRANE TTAD41A 300A	NOM 4 TON	208V/3PH 16.4 FLA 20 MCA 30 MOCP	TXAD48A4 COIL 9.50 SEER PROVIDE TXV
CU-2	CONDENSING UNIT AIR COOLED	TRANE TTAD60A 300A	NOM 5 TON	208V/3PH 20.5 FLA 25.2 MCA 40 MOCP	TXAD60P5 COIL 9.25 SEER PROVIDE TXV
EF-1	EXHAUST FAN (ENGINE)	CAR-MON #CMB-8 105	800 CFM 2" SP	120V/1PH 1/2 HP	PROVIDE VIBRATION ISOLATOR. FLOOR OUTLET #864TR.
EF-2	EXHAUST FAN CABINET TYPE	PENN Z-10	320 CFM 1050 RPM 2009 TS .315" SP	120V/1PH 130W	CLG MOUNTED EF-2 SWITCH W/ LIGHTS
EF-3	EXHAUST FAN CABINET TYPE	PENN Z-8	200 CFM 1050 RPM 1718 TS .05" SP	120V/1PH 105W	CLG MOUNTED SWITCH W/ LIGHTS. EF-5 SWITCH SEPARATE. EF-8 SWITCH SEPARATE.
EF-6	EXHAUST FAN CABINET TYPE	PENN Z-101	450 CFM 1050 RPM 2062 TS	120V/1PH 239W	CLG MOUNTED. SWITCH EF-6 W/ LIGHTS EF-7 SWITCH SEPARATE.
UH-1	UNIT HEATER	REZNR	50 MBH IN	120V/1PH 10" DIA FAN.	
2	GAS FIRED FAN TYPE-FORCED DRAFT	FE-50	40 MBH OUT 650 CFM	1/40 HP 2.2 FLA	4" VENT MFR'S PIPE HANGER KIT

* THE BRAND NAME CALLED OUT DOES NOT PRECLUDE EQUAL EQUIPMENT OF ANOTHER MANUFACTURER. IT IS THE RESPONSIBILITY OF CONTRACTOR TO ASSURE THAT EQUIPMENT WILL FIT AND PERFORM INTENDED FUNCTION.

AIR DEVICES SCHEDULE

MARK	DESCRIPTION	MFR. MODEL	SIZE	MATERIAL FINISH	COMMENTS
CD-1	CEILING DIFFUSER LOUVERED FACE	TITUS TMS	12"X12" FACE 24"X24" FRAME 6" NECK	STEEL WHITE	LAY-IN UP TO 150 CFM
CD-2	CEILING DIFFUSER LOUVERED FACE	TITUS TMS	12"X12" FACE 24"X24" FRAME 7" NECK	STEEL WHITE	LAY-IN UP TO 200 CFM
CD-3	CEILING DIFFUSER LOUVERED FACE	TITUS TMS	24"X24" FRAME 8" NECK	STEEL WHITE	LAY-IN UP TO 300 CFM
CD-4	CEILING DIFFUSER LOUVERED FACE	TITUS TMS	24"X24" FRAME 8" NECK	STEEL WHITE	SURFACE MOUNT UP TO 200 CFM
CD-5	CEILING DIFFUSER LOUVERED FACE	TITUS TMS	24"X24" FRAME 5" NECK	STEEL WHITE	SURFACE MOUNT UP TO 100 CFM
RG-1	RETURN AIR GRILLE EGG CRATE 1/2"X1/2"X1/2" GRID	TITUS 50F	24"X24" FRAME 22"X22" NECK	ALUM WHITE	LAY-IN UP TO 2000 CFM
L-1	LOUVER FIXED BLADE 1.5", 30 DEG	PENN ALA	12"X8"	ALUM MILL	FIELD PAINTED INSECT SCREEN
L-2	LOUVER FIXED BLADE 1.5", 30 DEG	PENN A.A	12"X12"	ALUM MILL	FIELD PAINTED INSECT SCREEN

* THE BRAND NAME CALLED OUT DOES NOT PRECLUDE EQUAL EQUIPMENT OF ANOTHER MANUFACTURER. IT IS THE RESPONSIBILITY OF CONTRACTOR TO ASSURE THAT EQUIPMENT WILL FIT AND PERFORM INTENDED FUNCTION.



ADDITION / ALTERATION OF
FIRE STATION
ARKANSAS AIR NATIONAL GUARD
FORT SMITH, ARKANSAS

a+ architecture plus
120 North 9th Street • Fort Smith, Arkansas • 501/783-8395
OMG O. MICHAEL GREEN ENGINEERING INC.
SUITE 610 FIRST PLACE • FAJETTVILLE ARKANSAS • (501) 442-4882
MECHANICAL SCHEDULES & DETAILS

REVISIONS:

PROJECT: **88-18**

DATE: 7-24-89

SHT. **M-3** of **3**

