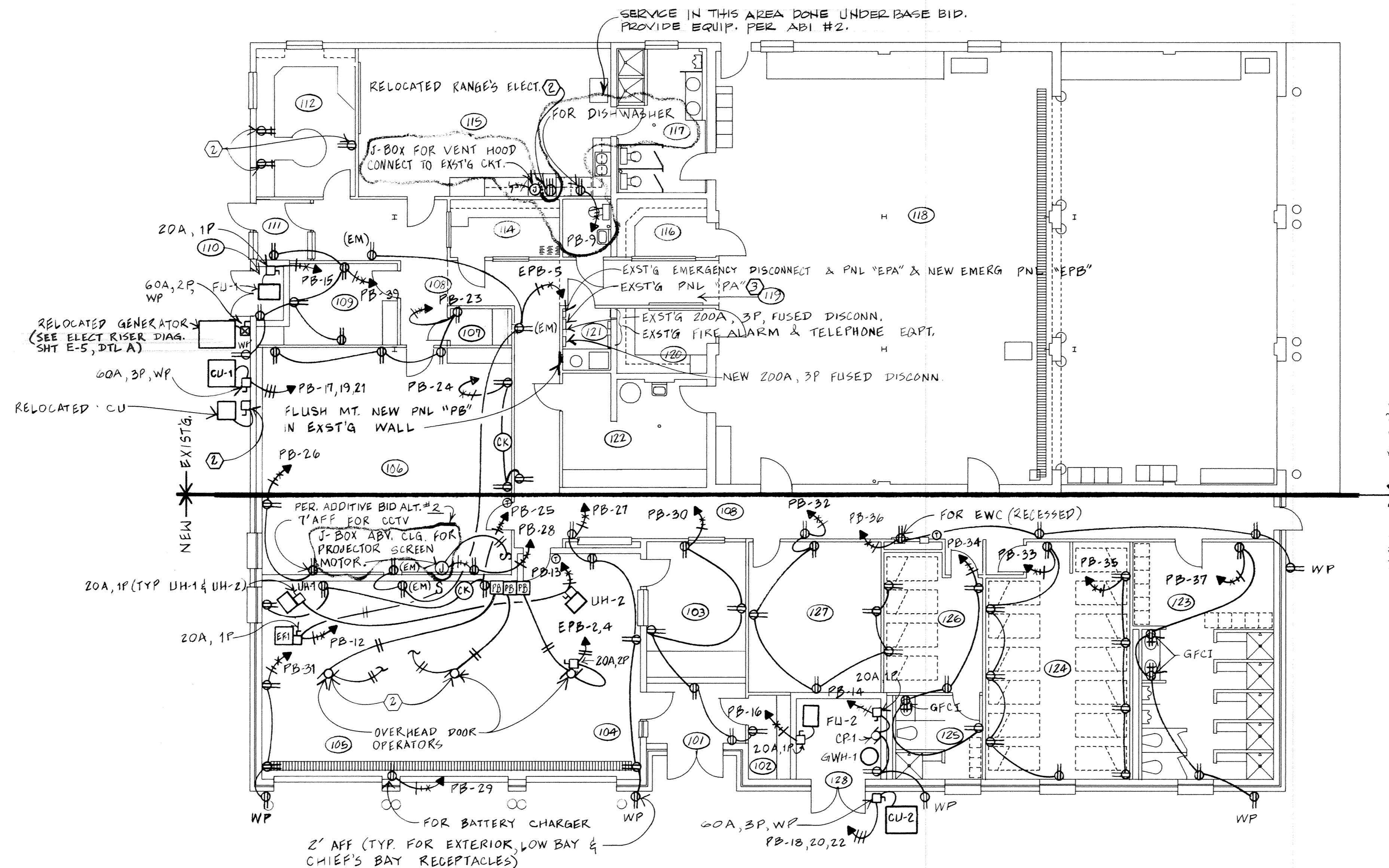


ELECTRICAL LEGEND

DIMENSIONS ABOVE FINISHED FLOOR (AFF) SHOWN BELOW ARE STANDARD MOUNTING HEIGHTS TO CENTER LINE OF DEVICE UNLESS OTHERWISE SPECIFIED.

- HOME RUN, PANEL & CIRCUIT NOTED
- ⊕ CIRCUIT CONDUCTORS: INSULATED GND, NEUTRAL, HOT, RESPECTIVELY
- ⊕ DUPLEX RECEPTACLE (1' AFF)
- ⊕ SPECIAL RECEPTACLE AS NOTED AT RECEPTACLE (1' AFF)
- ⊕ INDICATES RECEPTACLE LOCATED ABOVE COUNTER
- ⊕ JUNCTION BOX
- ⊕ RECESSED CLOCK RECEPTACLE (7'-6" AFF)
- ⊕ MOTOR
- S SINGLE POLE SWITCH (4' AFF)
- S³, S⁴ 3 OR 4 WAY SWITCH (4' AFF)
- ⊕ PUSHBUTTON SWITCH (4'-6" AFF)
- ⊕ FUSED DISCONNECT (6" AFF TO TOP)
- ⊕ NON-FUSED DISCONNECT SWITCH (6" AFF TO TOP)
- ⊕ EXIT LIGHT W/ DIRECTION ARROW
- ⊕ SMOKE DETECTOR (CEILING MOUNTED)
- ⊕ FIRE ALARM PULL STATION (4' AFF)
- ⊕ FIRE ALARM HORN (7' AFF)
- ⊕ SPEAKER (FROM INTER-COMMUNICATIONS) (CEILING MT.)
- ⊕ PHONE OUTLET (1' AFF)
- ⊕ CCTV OUTLET (7' AFF)
- ⊕ DOOR AJAR ALARM
- ⊕ PRIMARY & SECONDARY CRASH ALARMS (7' AFF) (TO MATCH EXST'G)
- ⊕ PRIMARY CRASH, SECONDARY CRASH & FIRE PHONE HOOK-UP (4'-6" AFF)
- ⊕ AUTOMATIC SWITCH OVERRIDING & MANUAL SWITCH OUTLET FOR LIGHT & HORN CONTROL. (4'-6" AFF)
- ⊕ INTER-COMMUNICATIONS SYSTEM OUTLET (SPEAKER & CALL BACK) (4'-6" AFF FOR WALL MOUNTED MODEL & 1'0" AFF FOR DESK MODEL)
- ⊕ THERMOSTAT (5' AFF)
- (EM) THIS DEVICE (RECEPTACLE, LTG FIXTURE, LT SWITCH, ETC...) IS ON NORMAL POWER & ON EMERGENCY GENERATOR
- WP WEATHER PROOF
- GFCI GROUND FAULT CIRCUIT INTERRUPTER
- (XXX) ROOM NUMBER

SEE SHEET E-4



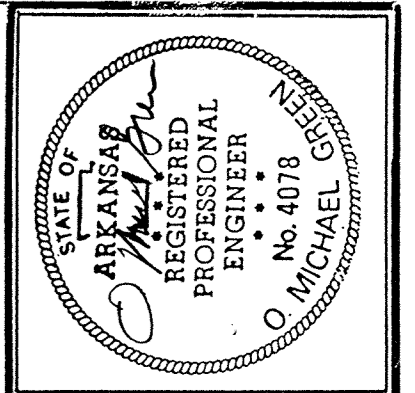
A ELECTRICAL POWER PLAN
SCALE: 1/8" : 1'-0"

GENERAL ELECTRICAL NOTES

- 1 EXST'G TO REMAIN.
- 2 RELOCATE EXST'G & EXTEND WIRING.
- 3 EXST'G 120/208V, 3 PH, 4W, 200A PANEL HAS 11-1 POLE SPACES (29, 31, 33, 35, 37, 39, 41, 36, 38, 40 & 42) AND REFERRED TO AS "PA".
- 4 EXTEND EXST'G TELEPHONE ALARM SYSTEM INTO BOTH BUNK ROOMS WITH A PRIMARY CRASH, SECONDARY CRASH AND FIRE PHONE HOOK-UP.
- 5 PROVIDE AUTOMATIC SWITCH, OVERRIDING AND MANUAL SWITCH THAT WILL CONTROL THE LIGHTS AND HORN IN THE EVENT THE PRIMARY, SECONDARY OR FIRE RINGS OCCUR DURING NIGHT HOURS IN THE BUNK ROOMS.
- 6 EXTEND EXST'G INTER-COMMUNICATIONS SYSTEM (PA) TO NEW SPEAKERS (CEILING MOUNTED) AS SHOWN ON DRAWINGS AND SPECIFICATIONS.
- 7 EXTEND EXST'G INTER-COMMUNICATIONS SYSTEM TO NEW LOCATIONS AS SHOWN ON DRAWINGS AND SPECIFICATIONS.
- 8 SHOWER LIGHT PROVIDED WITH SHOWER UNIT.
- 9 PROVIDE WEATHERPROOF COVER PLATE FOR SHOWER LIGHT SWITCH, HUBBELL #1795.
- 10 LTG FIXTURES "L" AND "M" ARE TO PROVIDE CONTINUOUS LTG IN CORRIDORS. VERIFY ACTUAL WALL LENGTHS AND PROVIDE ASSORTMENT OF FIXTURES INCLUDING NON-STANDARD HOUSING LENGTHS (SHEET METAL WITHOUT LIGHTS FORMED AND PAINTED TO MATCH FIXTURES "L" AND "M") AS REQ'D TO ACHIEVE CONTINUITY ALONG WALLS. NON-STANDARDS WILL BE INDICATED BY CROSS-HATCHING.

REF:SEE SHT. E-5 FOR ELECT SCHEDULES, DETAILS & RISERS

PROJ. NO. HKRZ001633



ADDITION / ALTERATION OF
FIRE STATION
 ARKANSAS AIR NATIONAL GUARD
 FORT SMITH, ARKANSAS

at architecture plus
 120 North 9th Street • Fort Smith, Arkansas • 501/783-8395
OMG O. MICHAEL GREEN ENGINEERING INC.
 SUITE 610 FIRST PLACE • FAYETTEVILLE ARKANSAS • (501) 442-4682
ELECTRICAL POWER PLAN

REVISIONS:

PROJECT: 88-18
DATE: 7-24-89
SHT. E-2 of 5

