

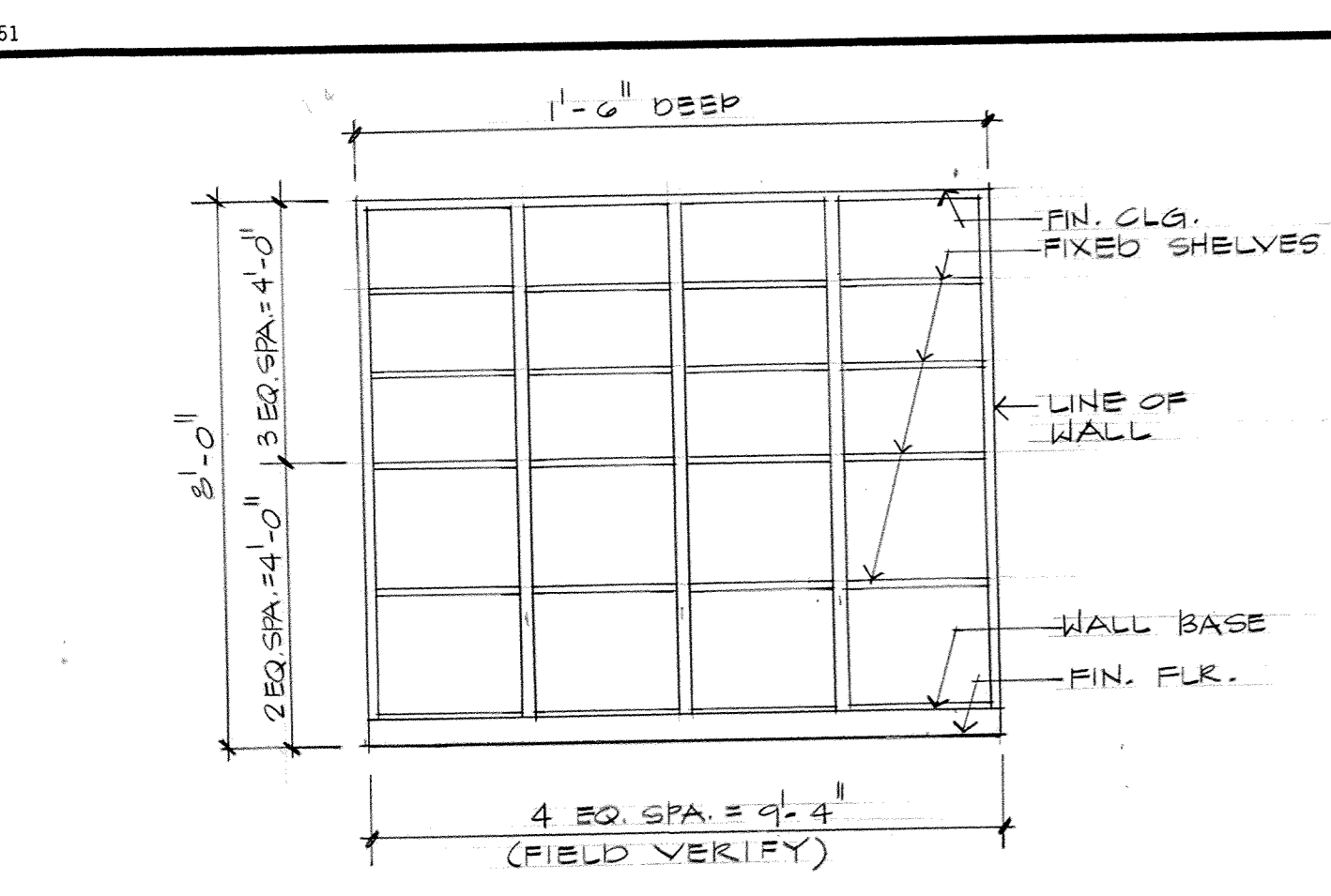


ADDITION / ALTERATION OF
FIRE STATION
ARKANSAS AIR NATIONAL GUARD
FORT SMITH, ARKANSAS

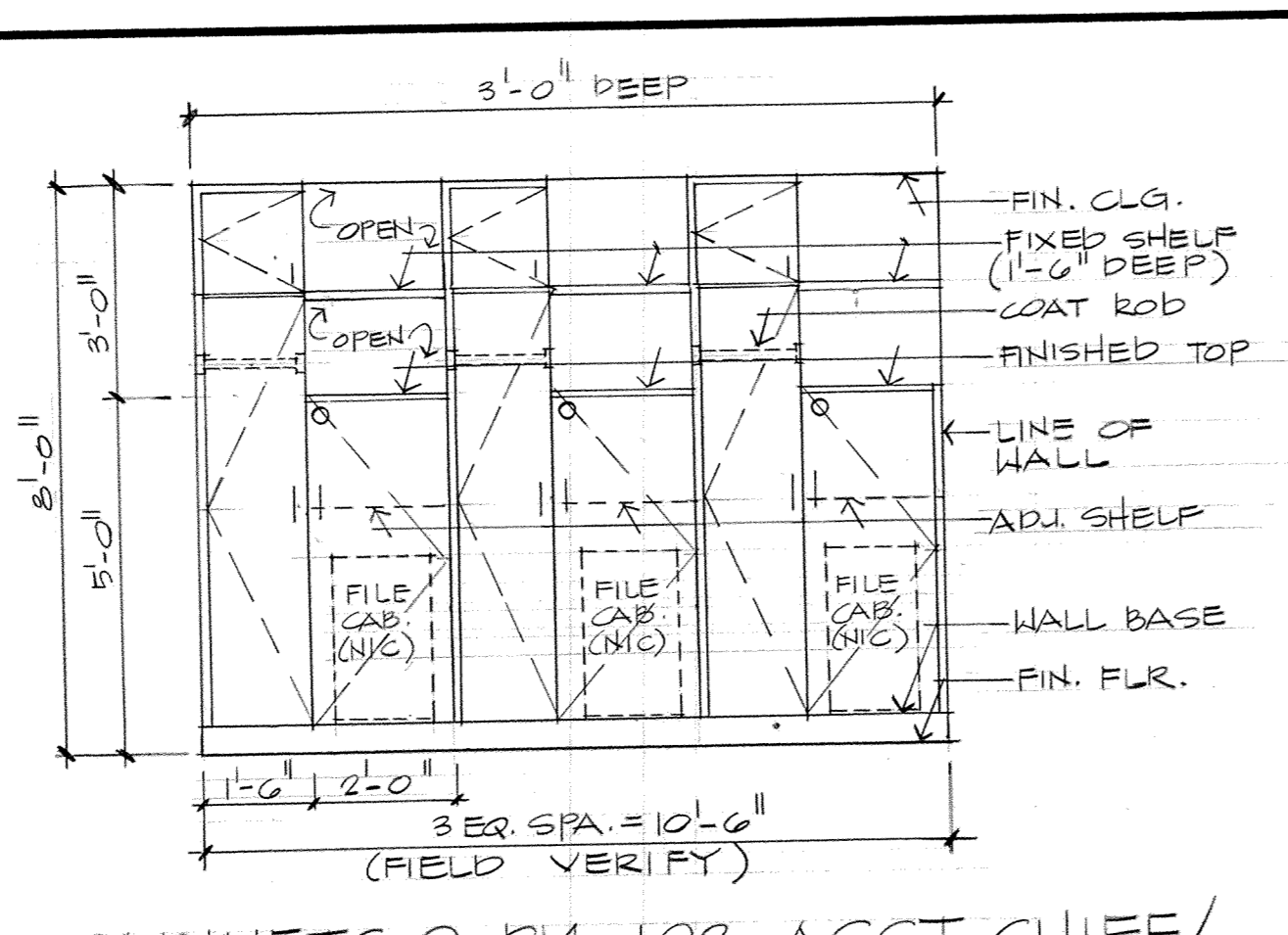
a+ architecture plus
120 North 9th Street • Fort Smith, Arkansas • 501/783-8395
MILLWORK

REVISIONS:
NO CHANGES
FOR AS BUILT

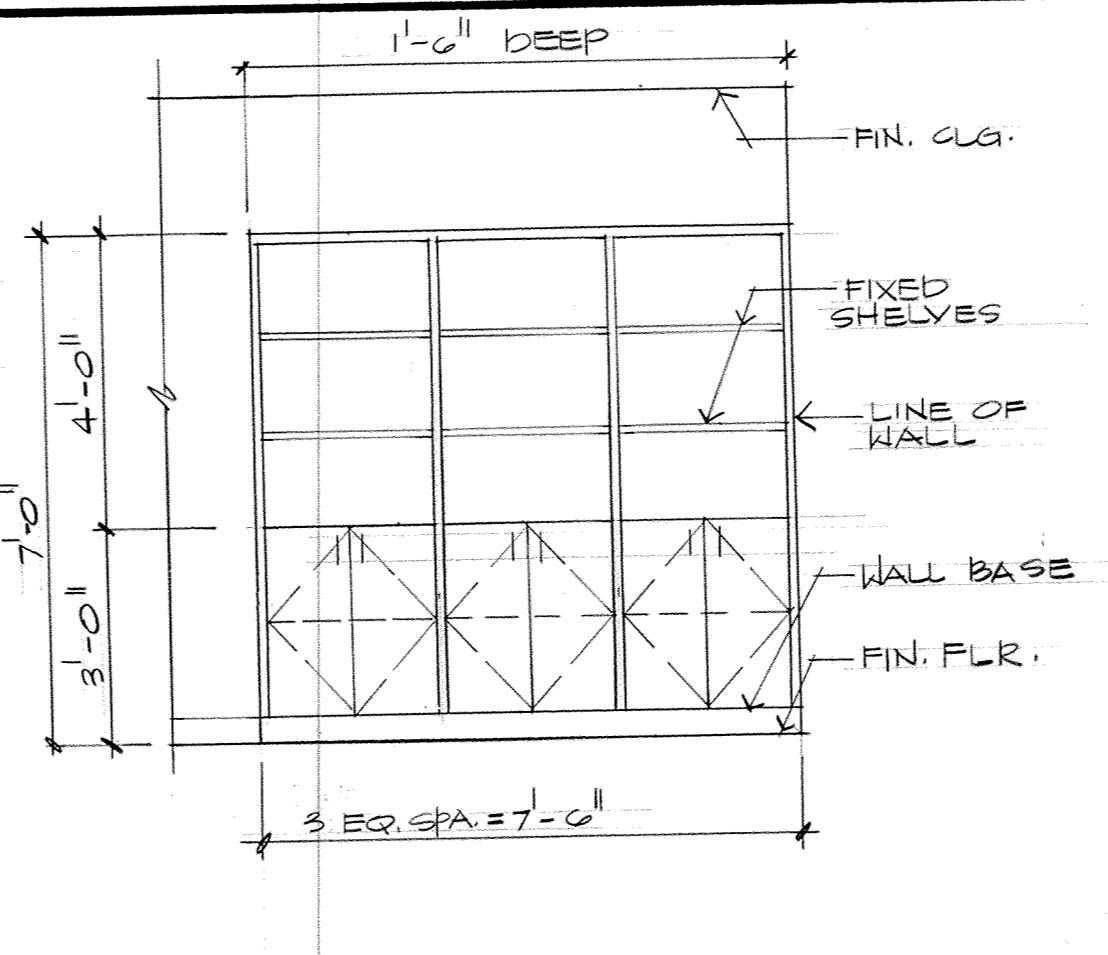
PROJECT: 88-18
DATE: 7-24-89
SHT. A-6 OF 7



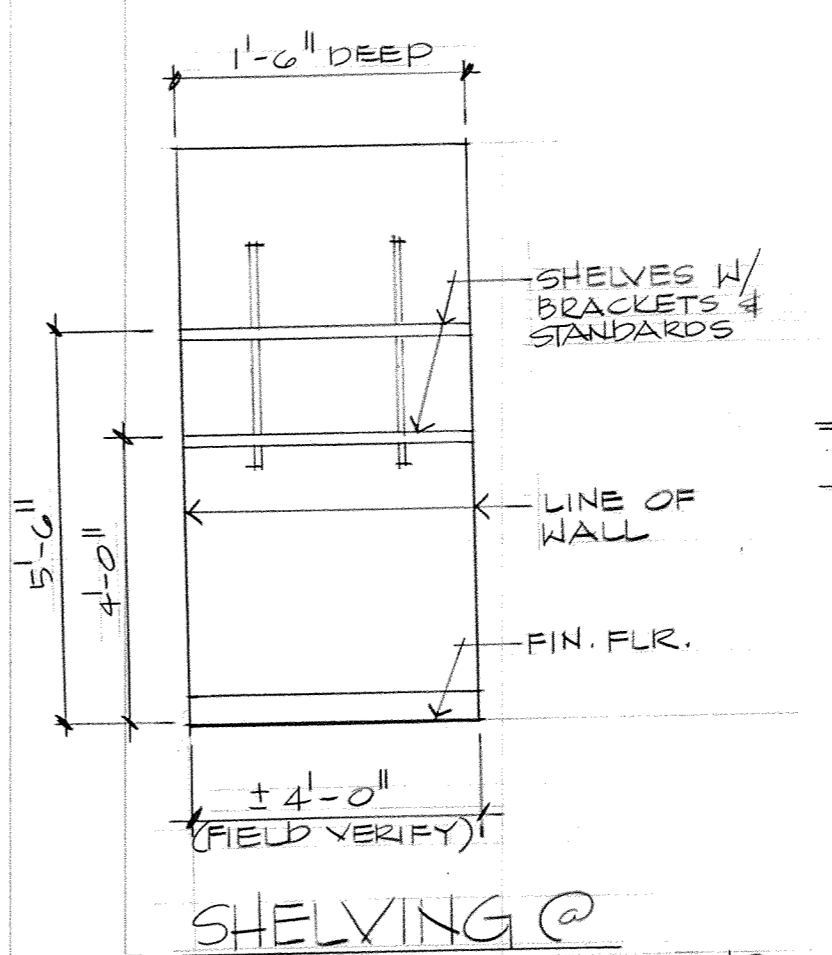
M-1 SHELVING @ RM. 102-CLO.
3/8" = 1'-0"



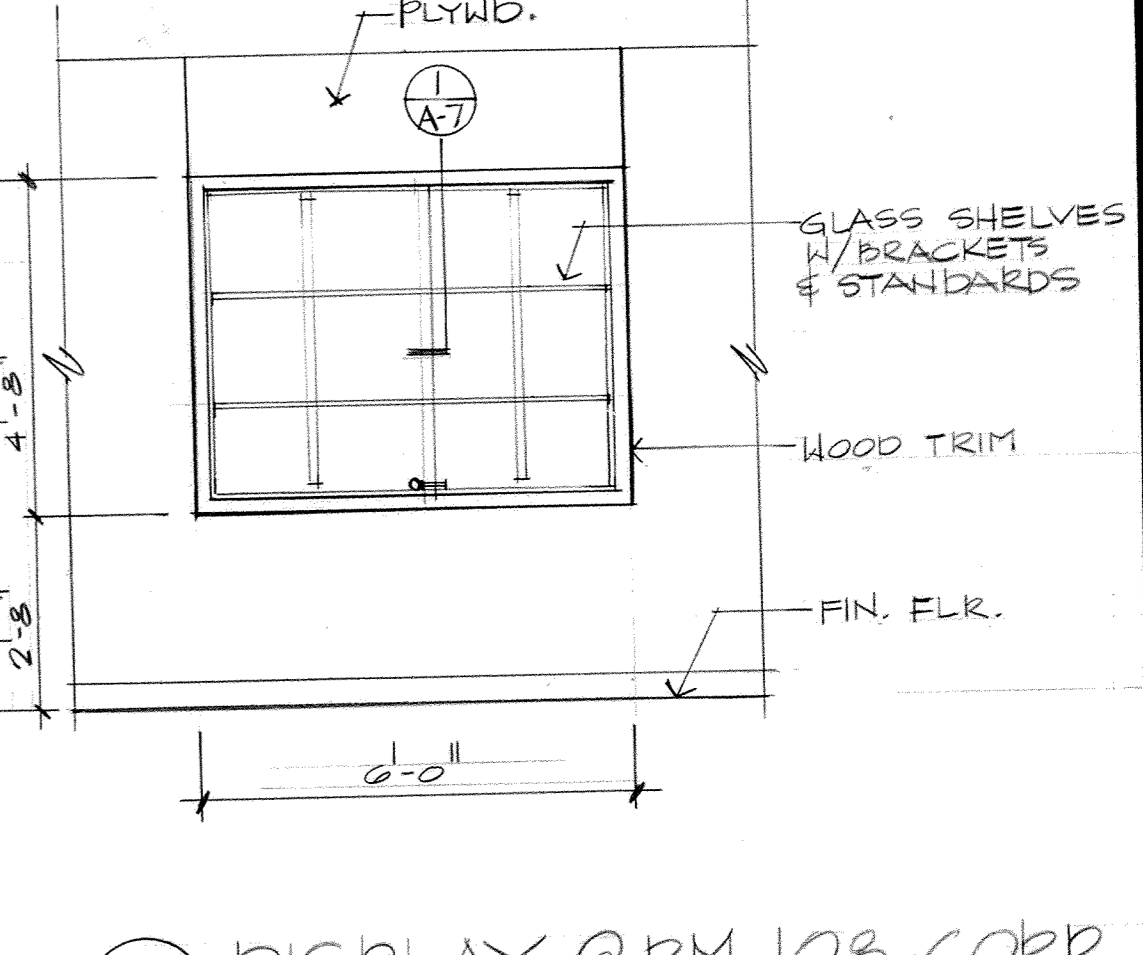
M-2 CABINETS @ RM. 103-ASST. CHIEF/
DUTY CHIEF OFFICE
3/8" = 1'-0"



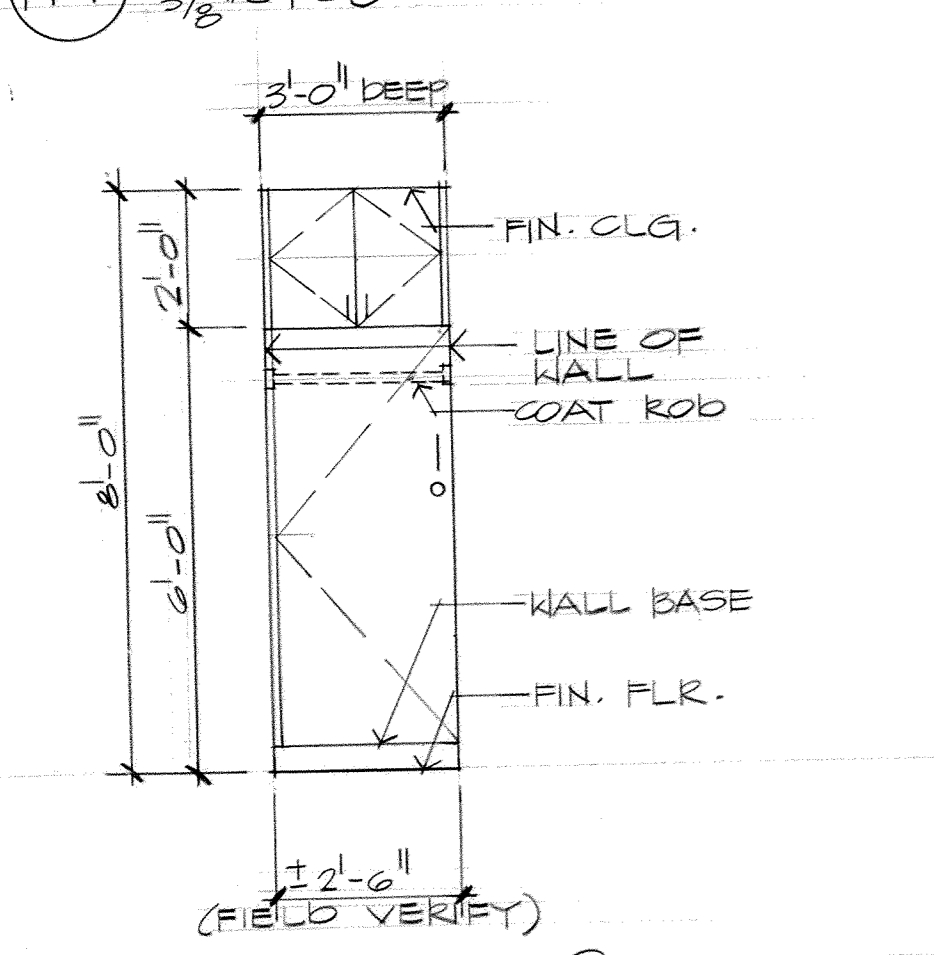
M-3 CAB. @ RM. 106-CLASSRM.
3/8" = 1'-0"



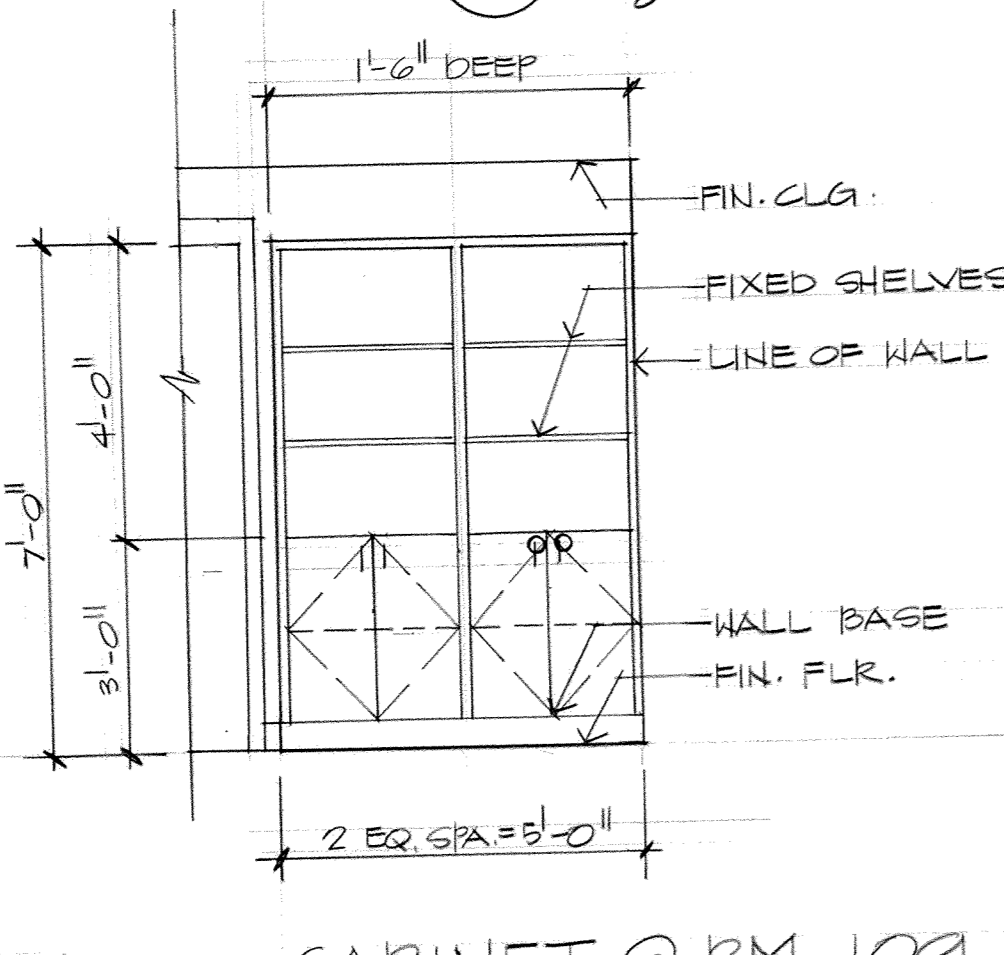
M-4 SHELVING @ RM. 107-AV STOR.
3/8" = 1'-0"



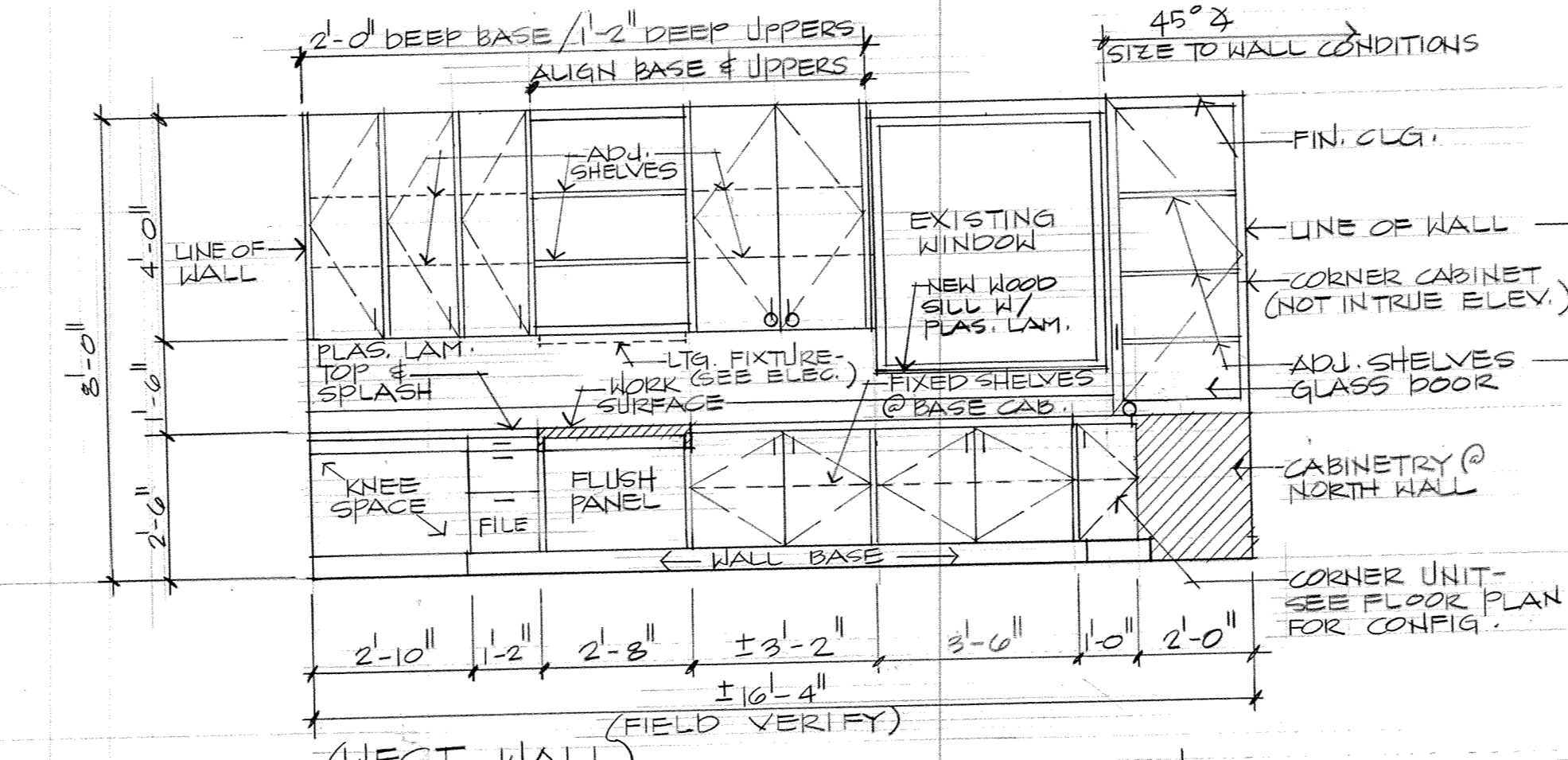
M-5 DISPLAY @ RM. 108-CORR.
3/8" = 1'-0"



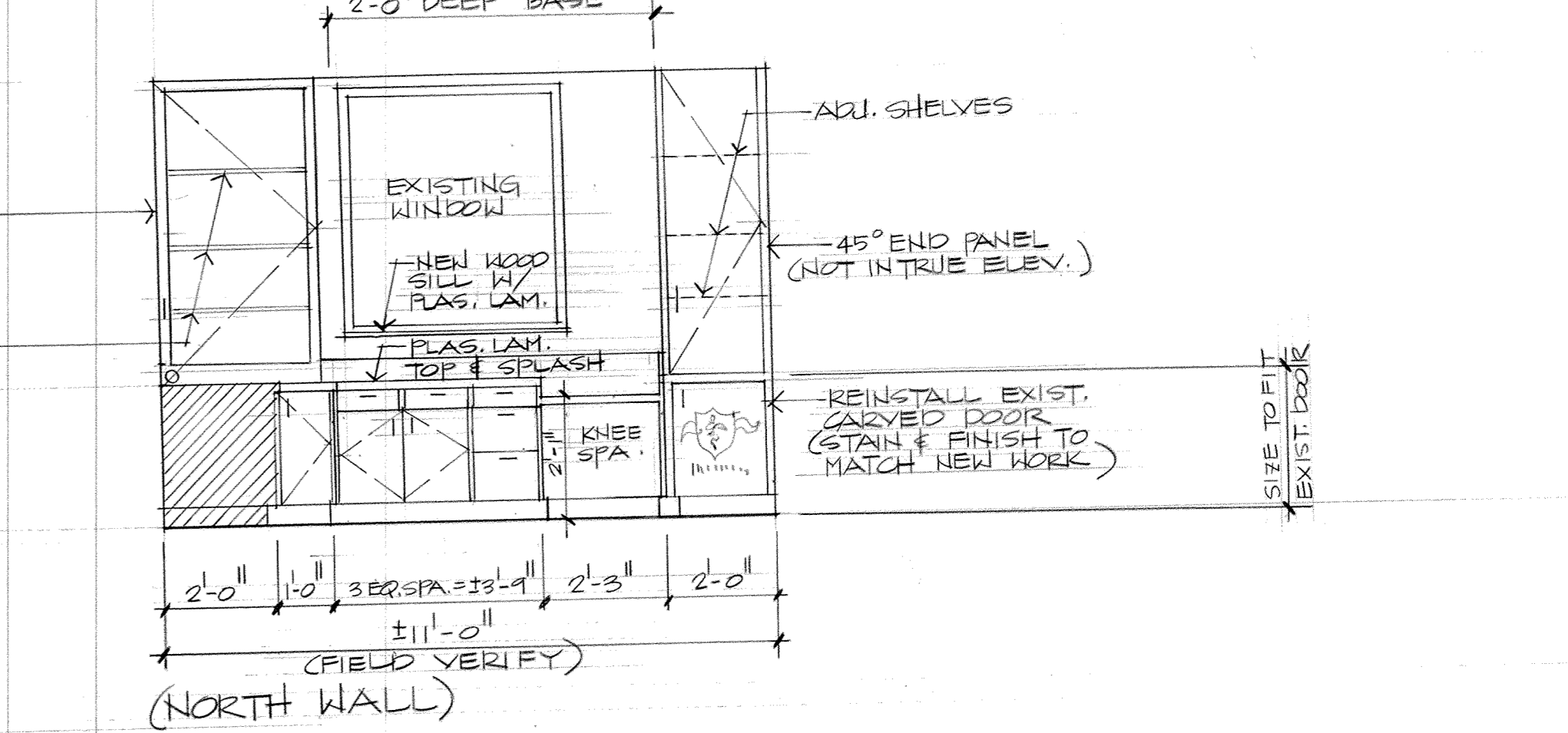
M-6 CABINET @ RM. 109
TRAINING OFFICE
3/8" = 1'-0"



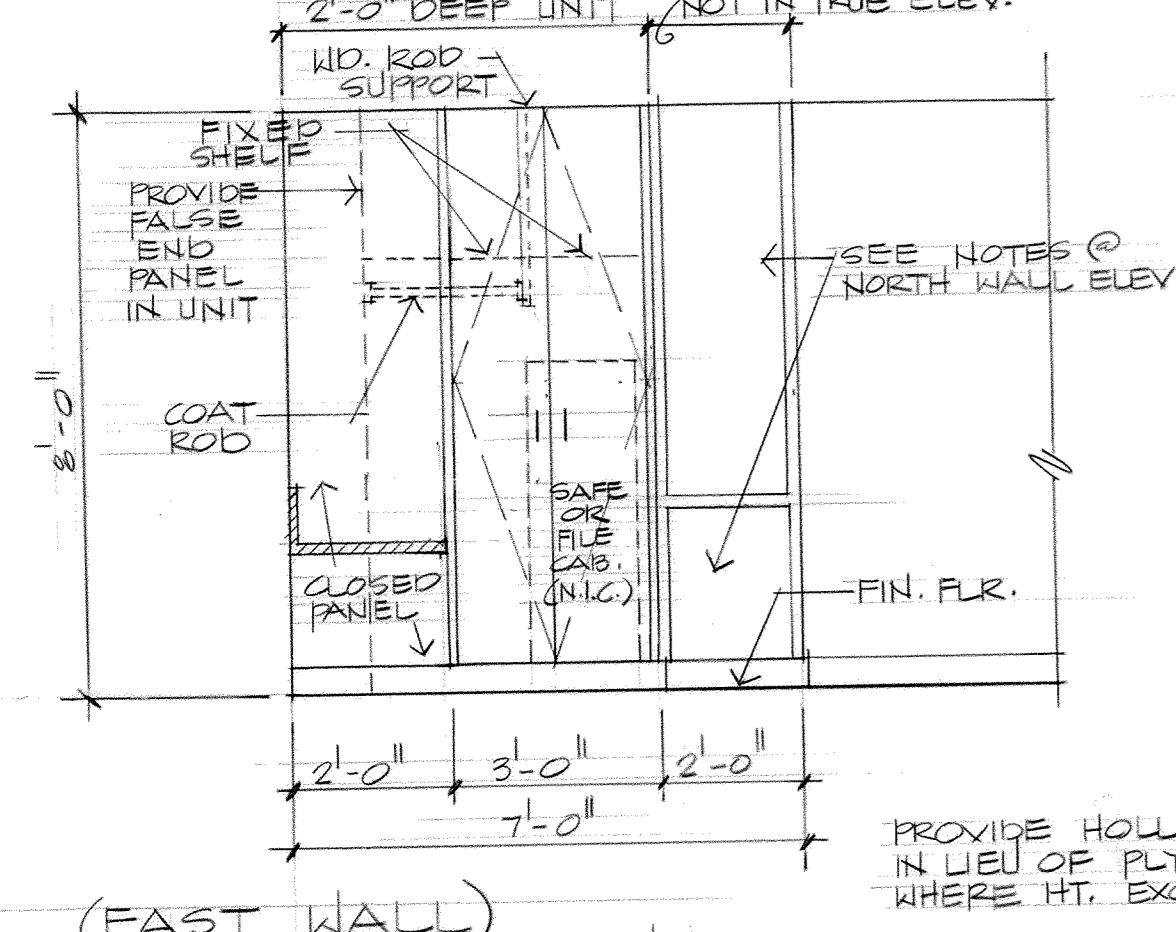
M-7 CABINET @ RM. 109
TRAINING OFFICE
3/8" = 1'-0"



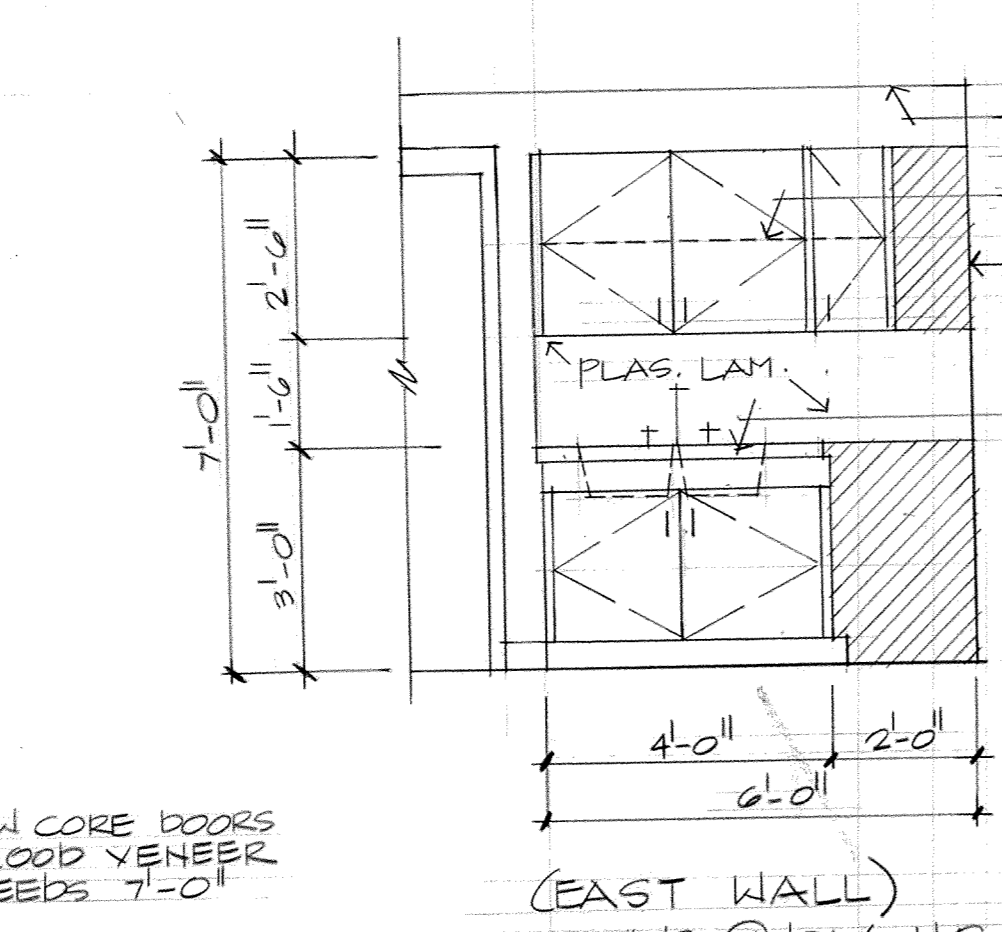
M-8 (WEST WALL) CABINETS @ RM. 112-CHIEF'S OFFICE
3/8" = 1'-0"



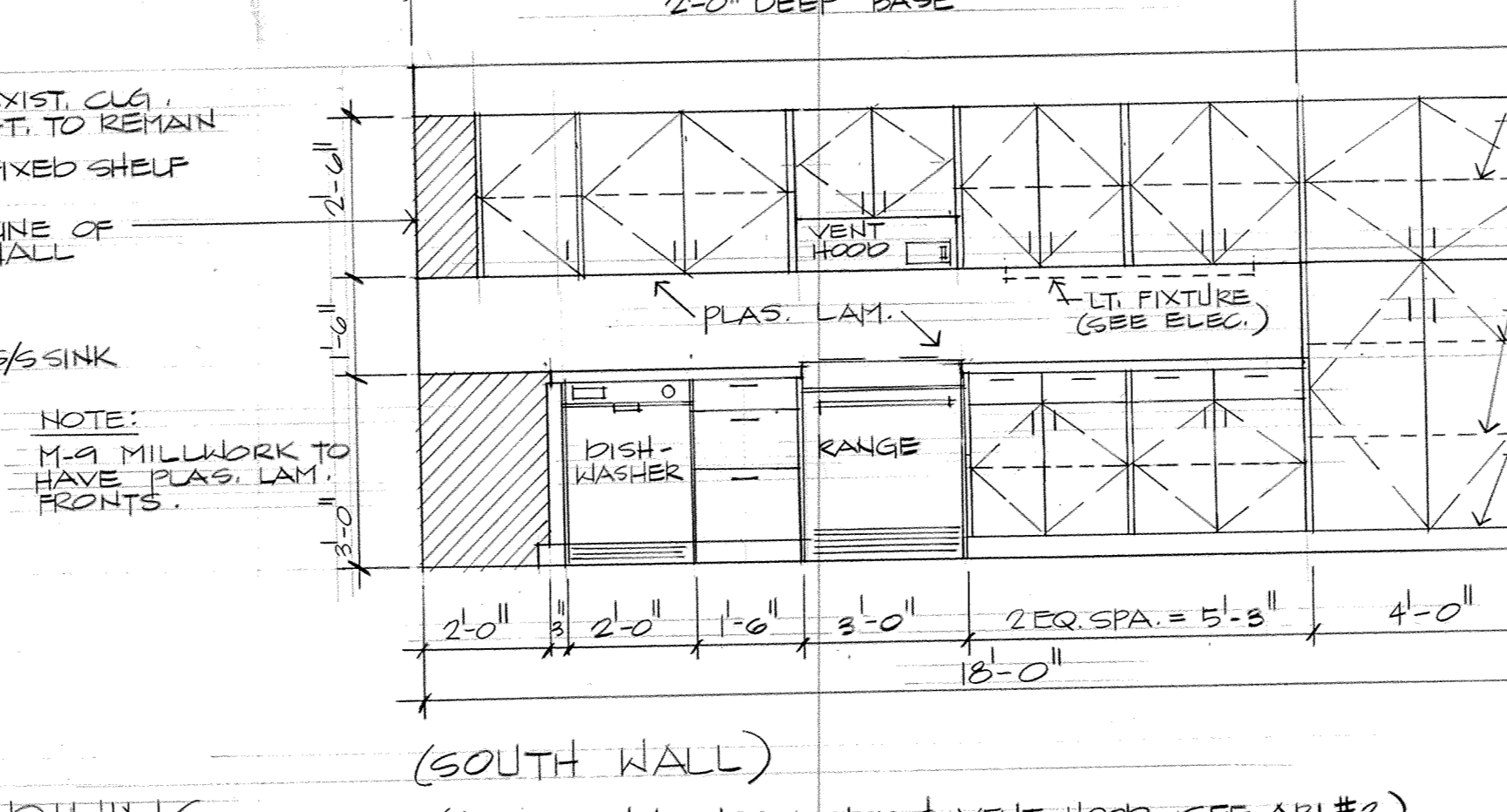
M-9 (NORTH WALL) CABINETS @ RM. 112-CHIEF'S OFFICE
3/8" = 1'-0"



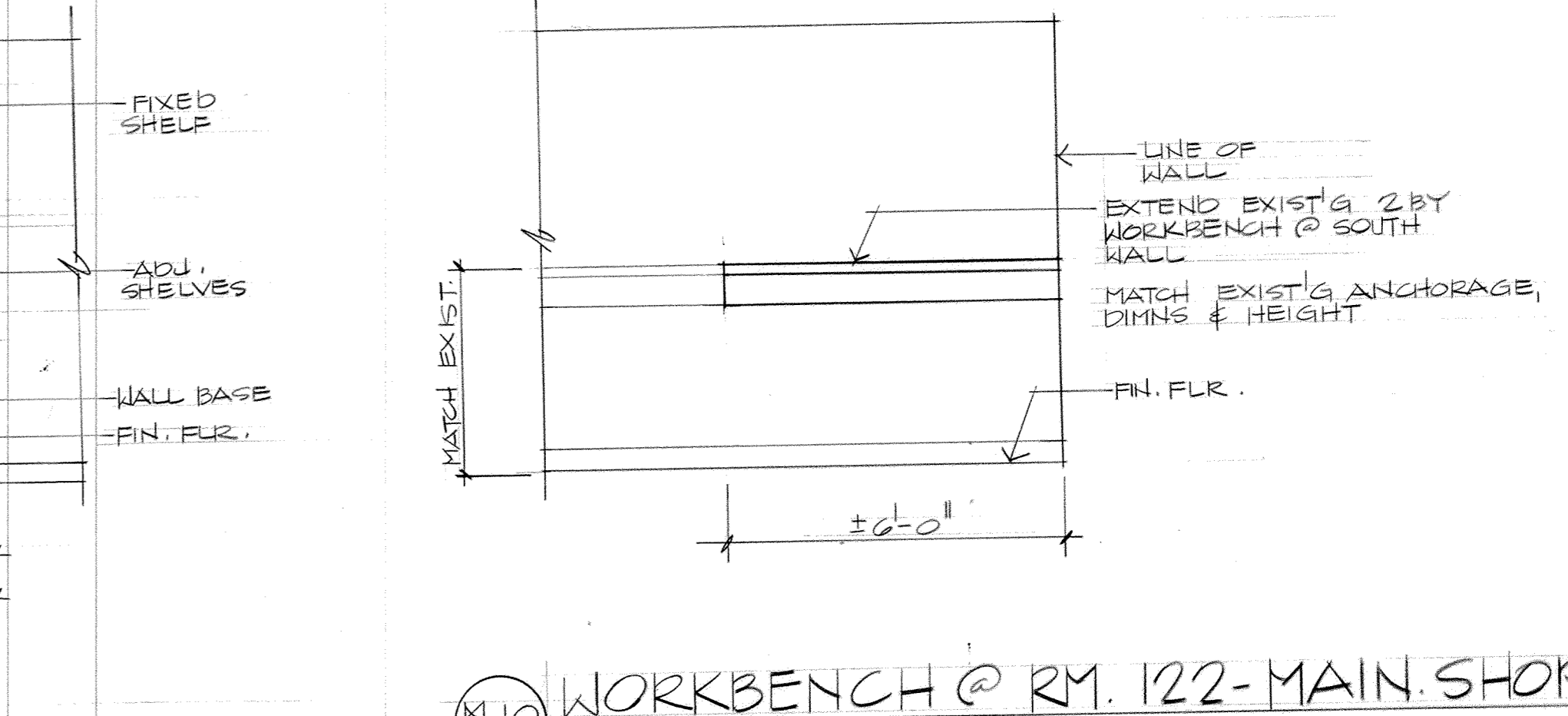
M-10 (EAST WALL) CABINET @ RM. 112-CHIEF'S OFFICE
3/8" = 1'-0"



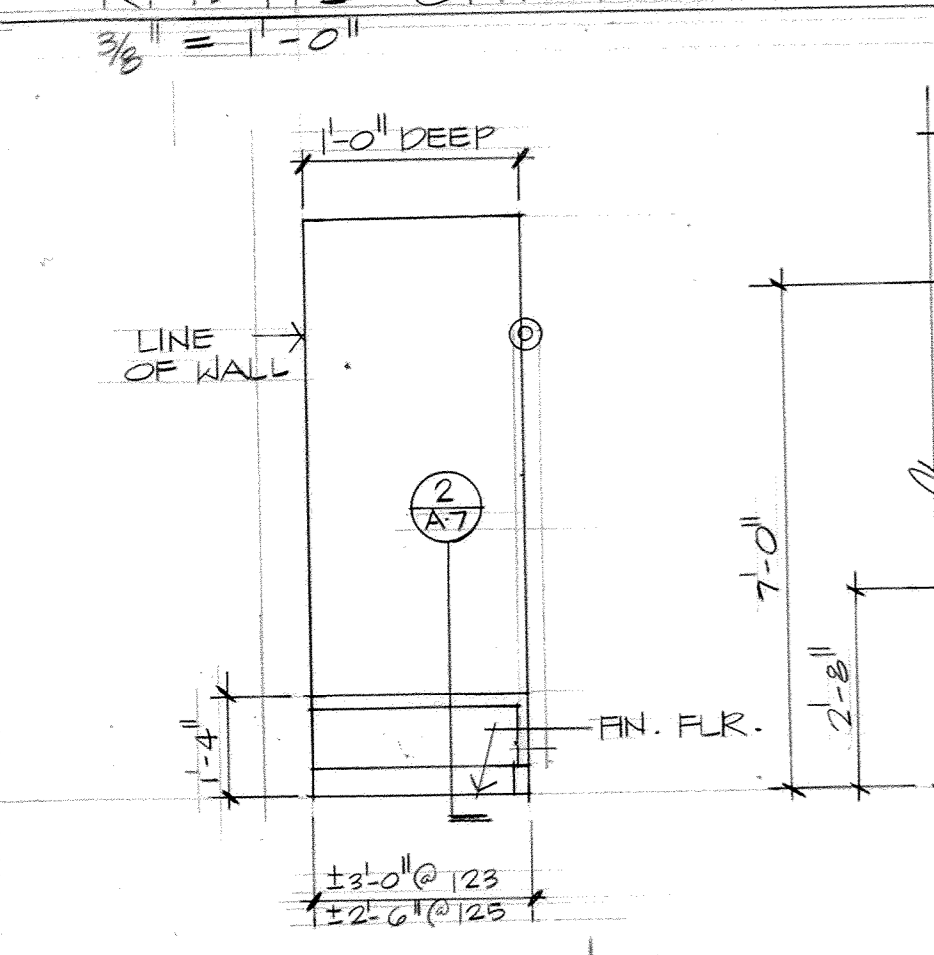
M-11 (EAST WALL) CAB. @ RM. 113-DINING
3/8" = 1'-0"



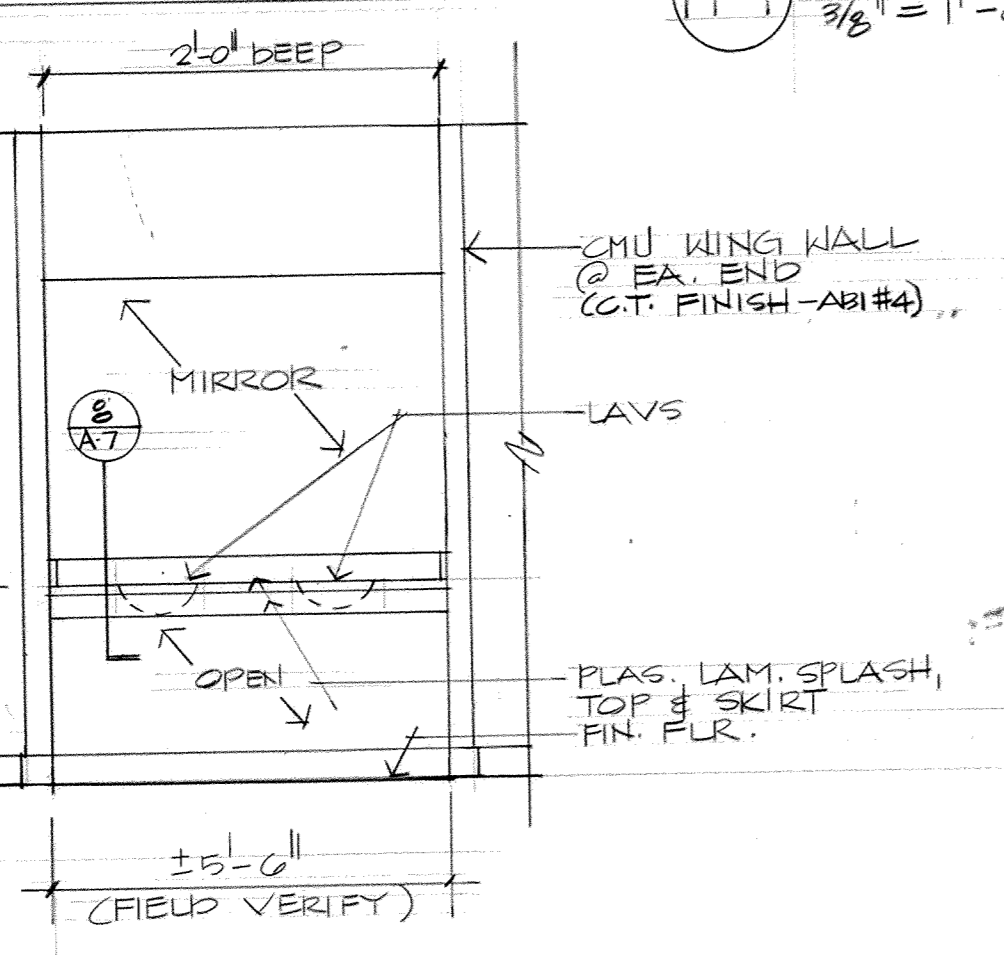
M-12 (SOUTH WALL) CABINETS @ RM. 113-DINING
3/8" = 1'-0"



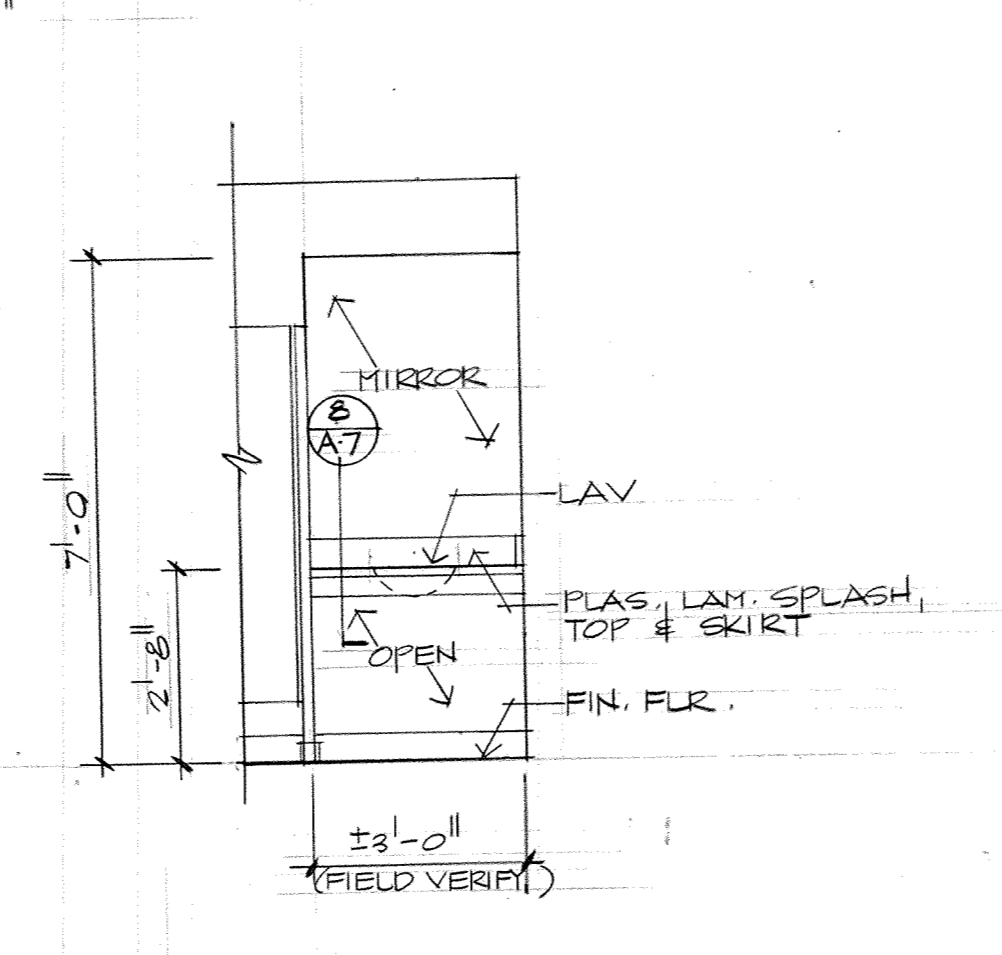
M-13 WORKBENCH @ RM. 122-MAIN SHOP
3/8" = 1'-0"



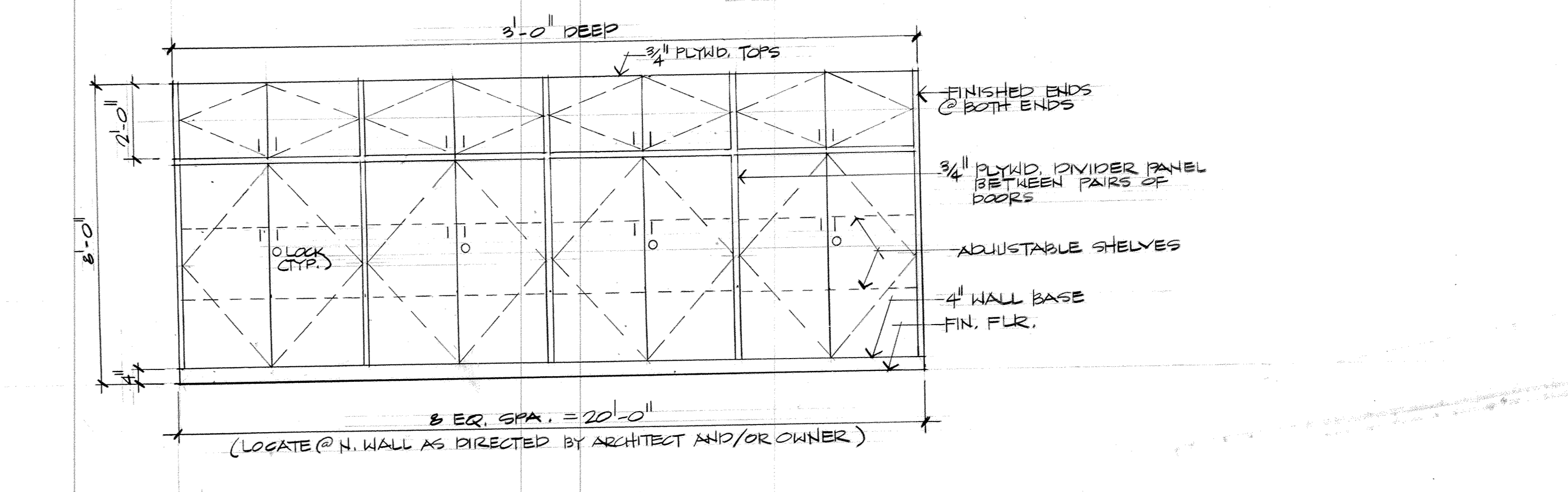
M-14 RMS. 123 & 125 TYP. SHOWER SEAT
3/8" = 1'-0"



M-15 LAV @ RM. 123-M.TLT.
3/8" = 1'-0"



M-16 LAV @ RM. 125-W.TLT.
3/8" = 1'-0"



M-17 (LOCATE @ N. WALL AS DIRECTED BY ARCHITECT AND/OR OWNER) STOR. @ RM. 118-HIGH BAY
3/8" = 1'-0"