

DEMOLITION NOTES

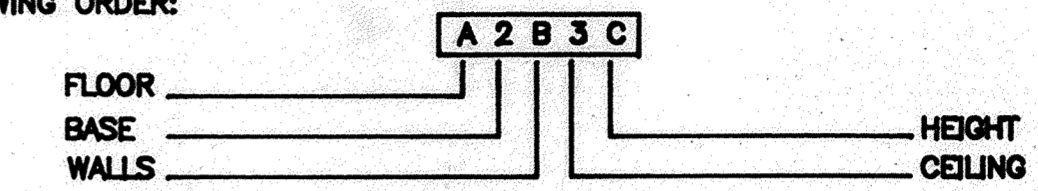
- ① DEMOLISH EXISTING STEEL PIPE BOLLARDS ADJACENT TO OVERHEAD DOORS.
- ② RELOCATE EXISTING LOCKERS IN FIRE STATION TO NEW LOCATIONS AS DIRECTED BY OWNER.
- ③ DEMOLISH EXISTING DOOR & FRAME AND CLOSE OPENING. PATCH TO MATCH ADJACENT WALL FINISH.
- ④ DEMOLISH EXISTING PARTITION, LINTEL & FRAME. SEE ②. (SEE STRUC.)
- ⑤ DEMOLISH EXISTING WINDOW. CUT EXISTING MASONRY WALL TO PROVIDE OPENING FOR NEW DOOR & FRAME AS SCHEDULED. SEE 2/A-5.
- ⑥ RELOCATE GRATING AT DRAIN. REFER TO PLUMBING PLAN, SHT. P-2.
- ⑦ DEMOLISH PORTION OF WALL, DOOR & FRAME.
- ⑧ REMOVE EXISTING WINDOW.
- ⑨ REMOVE EXISTING MILLWORK. CARVED DOOR @ BASE CABINET TO BE REINSTALLED. SALVAGE REMAINING ITEMS AND STORE AS DIRECTED BY OWNER.
- ⑩ REMOVE ② EXIST'G OVERHEAD DOORS, OPENERS & ASSOC. HARDWARE. RELOCATE TO RM. 105 AS NOTED. SEE ELEC. RE MOTORS.
- ⑪ CUT EXISTING MASONRY WALL TO PROVIDE OPENING FOR (PR.) DOORS & FRAME AS SCHEDULED.
- ⑫ DEMOLISH EXISTING MILLWORK.
- ⑬ DEMOLISH EXISTING PARTITION AND/OR DOOR & FRAME AS INDICATED.
- ⑭ MODIFY EXISTING FLOOR SLAB PER SUPPLEMENTAL PLAN.
- ⑮ RELOCATE AS DIRECTED BY OWNER.

SEE SUPPLEMENTAL DETAILS, SHT. 2K-2

ROOM FINISH SCHEDULE

FLOOR	BASE	WALLS	CEILING	HGT.	
A	CONCRETE	1 NONE	A CONCRETE	1 NONE	A EXP. STRUC.
B	VINYL COMPOSITION TILE	2 RUBBER / VINYL	B PAINT	2 GYPSUM BOARD	B 8-0
C	SHEET VINYL	3 SHEET VINYL	C VINYL COVERED GYPSUM BOARD	3 ACOUSTIC TILE	C 8-6
D	CERAMIC TILE	4 CERAMIC TILE	D PLASTER	4	D 9-0
E	QUARRY TILE	5 QUARRY TILE	E CERAMIC TILE	5	E 9-6
F	ENTRY MAT	6 WOOD	F VINYL WALLCOVERING	6	F 10-0
G	CARPET	7 CARPET	G	7	G
H	8	H	8	8	H
J	9	J	9	9	J

FOR "N" IN BOX, SEE NOTE ON FLOOR PLAN. ALL FINISHES LISTED MAY NOT BE REQUIRED. NUMBERS AND LETTERS APPEARING IN BOXES ON FLOOR PLANS REFER TO ROOM FINISH SCHEDULE IN THE FOLLOWING ORDER:

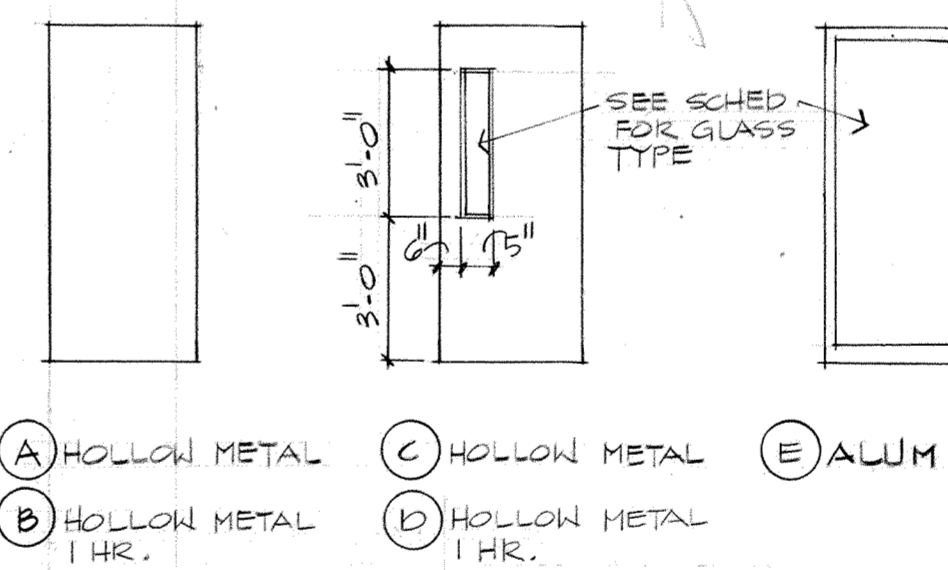


NOTE: ALL EXISTING DOORS TO REMAIN UNLESS NOTED OTHERWISE. IN GENERAL, DOOR NUMBER IS SAME AS ROOM NUMBER.

DOOR SCHEDULE

DOOR NO.	SIZE	DOOR				FRAME			HARDWARE SET NO.	KEYSIDE R/L NO.	REMARKS
		MAT. TYPE	GRADE	GLASS	LOUVER	MAT. TYPE	HEAD	JAMB			
101A	3'-0" x 7'-0"	AL	E	-	A	-	-	AL	-	-	PR.
101B	3'-0" x 7'-0"	HM	D	-	D	-	-	HM	-	-	PR.
102	3'-0" x 7'-0"	HM	B	-	D	-	-	HM	-	-	PR.
103	3'-0" x 7'-0"	HM	D	-	D	-	-	HM	-	-	PR.
104	3'-0" x 7'-0"	HM	D	-	D	-	-	HM	-	-	PR.
105A	3'-0" x 7'-0"	HM	C	-	B	-	-	HM	-	-	PR.
105B	3'-0" x 7'-0"	HM	C	-	B	-	-	HM	-	-	PR.
107	3'-0" x 7'-0"	HM	A	-	B	-	-	HM	-	-	PR.
108	3'-0" x 7'-0"	HM	A	-	B	-	-	HM	-	-	PR.
109	3'-0" x 7'-0"	HM	C	-	B	-	-	HM	-	-	PR.
110	2'-0" x 7'-0"	HM	A	-	B	-	-	HM	-	-	PR.
111A	3'-0" x 7'-0"	AL	E	-	A	-	-	AL	-	-	PR.
111B	3'-0" x 7'-0"	HM	C	-	B	-	-	HM	-	-	PR.
112	3'-0" x 7'-0"	HM	C	-	B	-	-	HM	-	-	PR.
115A	3'-0" x 7'-0"	HM	C	-	A	-	-	HM	-	-	PR.
115B	3'-0" x 7'-0"	HM	C	-	D	-	-	HM	-	-	PR.
118 G	3'-0" x 7'-0"	HM	C	-	D	-	-	HM	-	-	PR.
122	3'-0" x 7'-0"	HM	C	-	D	-	-	HM	-	-	PR.
123	3'-0" x 7'-0"	HM	A	-	-	-	-	HM	-	-	PR.
124	3'-0" x 7'-0"	HM	A	-	-	-	-	HM	-	-	PR.
125	3'-0" x 7'-0"	HM	A	-	-	-	-	HM	-	-	PR.
126	3'-0" x 7'-0"	HM	A	-	-	-	-	HM	-	-	PR.
127	3'-0" x 7'-0"	HM	C	-	B	-	-	HM	-	-	PR.
128	3'-0" x 7'-0"	HM	A	-	-	-	-	HM	-	-	PR.

DOOR TYPES

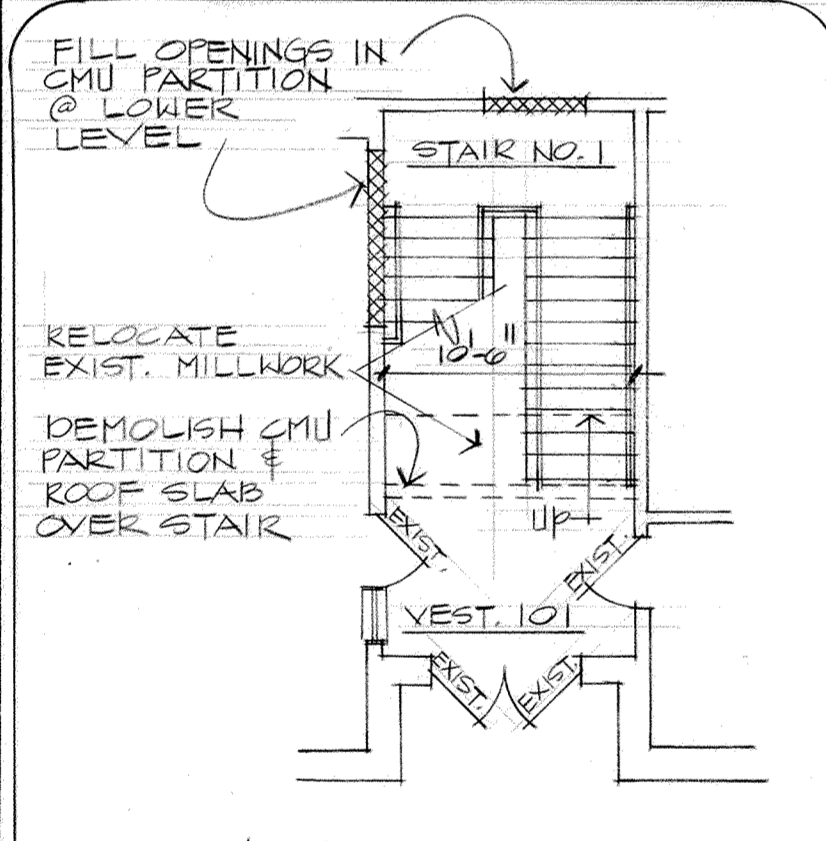
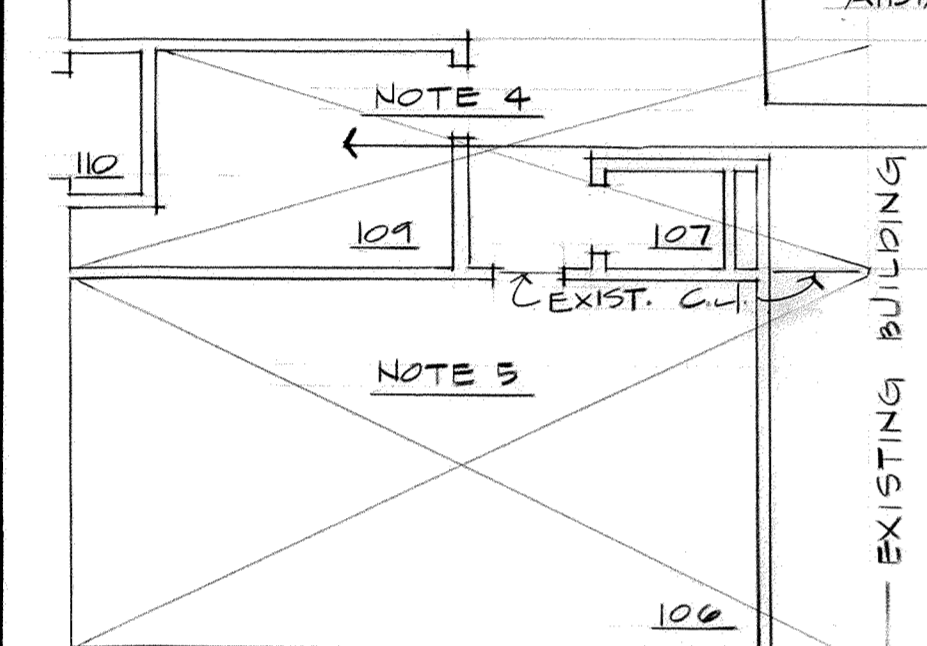


GLASS SCHED.

- TYPE A TINTED TEMPERED INSULATING GLASS
- TYPE B CLEAR TEMPERED GLASS (1/4")
- TYPE C CLEAR FLOAT GLASS (1/4")
- TYPE D CLEAR WIRE GLASS (1/4")

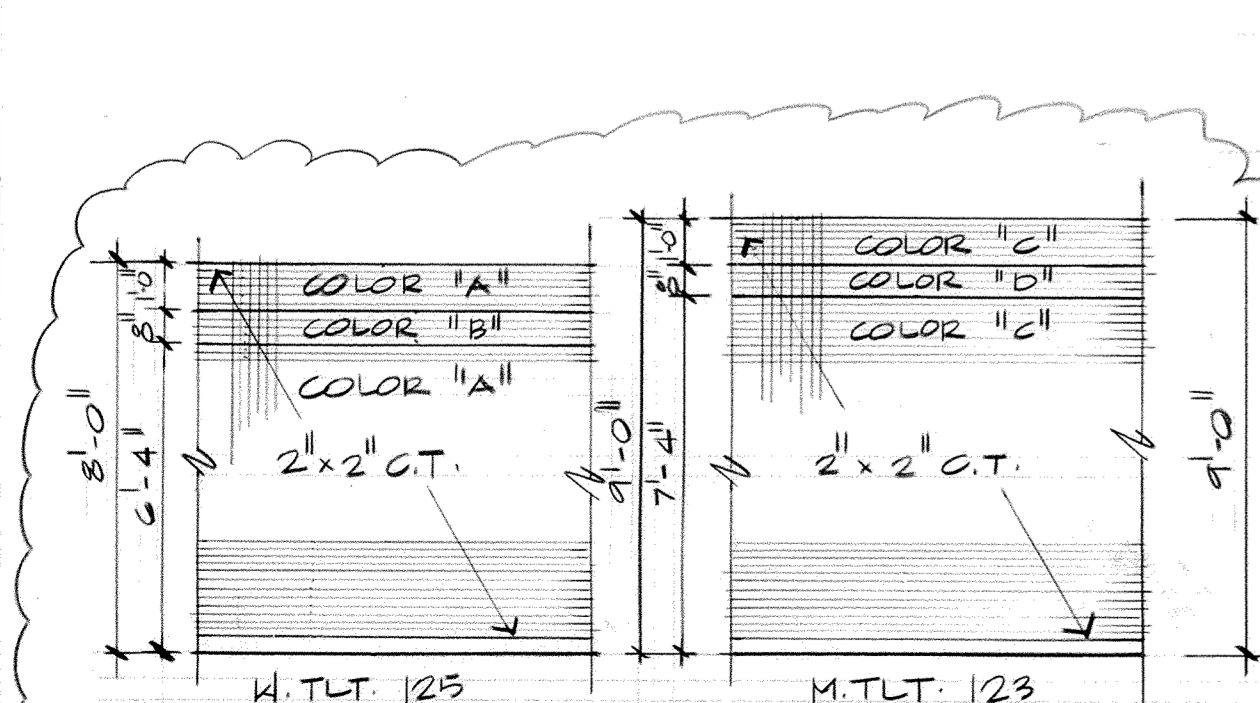
- (A) HOLLOW METAL
- (B) HOLLOW METAL 1 HR.
- (C) HOLLOW METAL
- (D) HOLLOW METAL 1 HR.
- (E) ALUM.

SLAB MODIFIC. SUPPLEMENTAL PLAN



FUTURE FIRST FLOOR STAIR PLAN

NOTE: 2/A-1 IS NOT IN CONTRACT THIS PLAN FOR REFERENCE ONLY



DETAIL FOR C.T. ACCENT

FLOOR PLAN

- NOTES:
- REFER TO SPECIFICATIONS FOR TOILET ACCESSORIES.
 - EXTENT OF CERAMIC TILE WALL FINISH (FULL HEIGHT) IN RMs. 123 & 125 IS INDICATED BY A HEAVY LINE @ FACE OF WALL. SEE DTL 3/A-1. (ABI #4)
 - REFER TO SHT. A-7 FOR ALUMINUM & HOLLOW METAL FRAME ELEVATIONS. TYP. FRAME APPLIES FOR ALL H.M. UNLESS INDICATED OTHERWISE.
 - FOR PORTIONS OF EXISTING SLAB IN THIS AREA (FORMER VEHICLE BAY) WHICH SLOPE NORTH TO SOUTH, PROVIDE SYNTHETIC OR GYPSUM TOPPING TO BRING SURFACE LEVEL TO A TOLERANCE OF 1/8" IN TEN FEET. TOPPING SHALL NOT EXCEED 3/4" DEPTH.
 - FOR PORTIONS OF EXISTING SLAB IN THIS AREA (FORMER VEHICLE BAY) WHICH SLOPE NORTH TO SOUTH, ROUGHEN & REMOVE CONC. SLAB TO A SUFFICIENT DEPTH FOR BONDING OF NEW CONCRETE. APPLY LATEX "BONDING" PRIMER OVER AREA TO RECEIVE TOPPING. PROVIDE CONCRETE TOPPING TO A LEVELNESS TOLERANCE OF 1/8" IN TEN FEET INCLUDING FILLING OF ABANDONED TRENCH DRAIN. REFER TO SPEC. FOR CONCRETE FINISHING FOR SCHEDULED FLOOR FINISHES. CONC. TOPPING SHALL BE 1" DEEP MINIMUM. IF ABI #4 IS ACCEPTED, RM. 123 FINISHES SHALL BE D4E2D PER NOTE #2 ABOVE AND ACCENT DTL 3/A-1 IN LIEU OF THAT SHOWN. (DEPRESS SLAB)
 - RM. 125 FINISHES SHALL BE D4E2B PER NOTE #2 ABOVE AND ACCENT DTL 3/A-1 IN LIEU OF THAT SHOWN. (DEPRESS SLAB)



ADDITION / ALTERATION OF
FIRE STATION
ARKANSAS AIR NATIONAL GUARD
FORT SMITH, ARKANSAS

a+ architecture plus
120 North 9th Street • Fort Smith, Arkansas • 501/783-8395

FLOOR PLAN

SYMBOLS LEGEND

ROOM NAME: HALL 101	ROOM NAME, NUMBER AND FINISHES	[Symbol]	FACE BRICK
FINISHES: (77)	DOOR MARK AND NUMBER	[Symbol]	CONCRETE MASONRY UNIT (C.M.U.)
(VA)	WINDOW ELEVATION	[Symbol]	METAL STUD
(HM)	HOLLOW METAL FRAME ELEVATION	[Symbol]	CONCRETE
(AL)	ALUMINUM FRAME ELEVATION	[Symbol]	PATCH EXISTING
DETAIL NUMBER: (1)	ELEVATION MARK AND NUMBER	[Symbol]	EARTH
SHEET NUMBER: (2)	DETAIL MARK	[Symbol]	GRAVEL
DETAIL NUMBER: (3)	SECTION MARK	[Symbol]	WOOD (ROUGH)
SHEET NUMBER: (4)	MATCH LINE	[Symbol]	WOOD (FINISH)
(CG)	CORNER GUARD	[Symbol]	PLYWOOD
(M-1)	MILLWORK ELEVATION	[Symbol]	

REVISIONS:
ASBUILT

PROJECT: 86-13

DATE: 7-24-89

SHT. A-1 OF 7



PROJ. NO. HKRZ001633