

## GENERAL HVAC NOTES

- COORDINATE GRILLE LOCATIONS WITH LIGHT FIXTURES, SPRINKLERS AND CEILING GRID.
- INDICATED DUCT SIZES ARE NET FREE AREA.
- ADJUST ALL AIR QUANTITIES AS SHOWN ON THE PLANS AFTER COMPLETION OF THE JOB.
- INSULATE THE SUPPLY GRILLE TOPS, RETURN AIR GRILLE FLENUMS AND EXHAUST AIR FLENUMS WITH 2 IN. 3/4 LB DENSITY FOIL BACKED INSULATION.
- FIRE AND/OR SMOKE DAMPERS ARE INDICATED ON MECHANICAL DRAWINGS. MECHANICAL CONTRACTOR SHALL BE RESPONSIBLE TO VERIFY LOCATIONS AND FIRE RATING REQUIREMENTS WHERE ANY DUCT PASSES THROUGH A PARTITION. REFER TO ARCHITECTURAL PLANS FOR LOCATION OF ALL FIRE AND SMOKE PARTITIONS. VERIFY REQUIRED DAMPER ASSEMBLY IN ALL DUCTS PENETRATING THESE WALLS PER ALL STATE AND LOCAL CODES.
- EXTERNALLY INSULATE ALL ROUND SUPPLY AND RETURN DUCT. INTERNALLY INSULATE ALL RECTANGULAR SUPPLY AND RETURN DUCT PER MECHANICAL CODE. ATTACH THE INTERNAL INSULATION TO THE DUCT WITH APPROVED ADHESIVE AND WELDED FASTENERS.
- MECHANICAL CONTRACTOR SHALL COORDINATE ALL DUCTWORK WITH FIELD CONDITIONS AND PROVIDE ALL OFFSETS, BENDS, TRANSITIONS AND SPECIAL FITTINGS FOR A COMPLETE INSTALLATION OF THE SYSTEMS.
- USE FLANGED AND GASKETED DUCT CONSTRUCTION FOR RECTANGULAR DUCT CONVEYING AIR AT STATIC PRESSURES ABOVE 2 IN. W.G. USE LOCKED BEAM SPIRAL DUCT CONSTRUCTION FOR ROUND DUCT CONVEYING AIR AT STATIC PRESSURES ABOVE 2 IN. W.G. ALL HIGH PRESSURE DUCT CONSTRUCTION SHALL ADHERE TO SMACNA DUCT CONSTRUCTION STANDARDS (LATEST EDITION) FOR DUCT CLASSIFICATION UP TO 3 IN. W.G.
- INTERIOR OF ALL DUCT FLENUMS VISIBLE THROUGH GRILLE SHALL BE PAINTED MATTE BLACK PRIOR TO INSTALLATION.
- INTERLOCK EXHAUST FANS WITH LIGHT SWITCHES. REFER TO ELECTRICAL PLANS.
- PAINT ALL SUPPLY AND RETURN AIR GRILLES NOT SPECIFIED AS PRE-FINISHED, TO ARCHITECT'S SPECIFICATIONS UNLESS OTHERWISE SPECIFIED.
- MAINTAIN 10 FT. MINIMUM CLEARANCE BETWEEN FRESH AIR INTAKES AND ALL EXHAUST OUTLETS, GAS FLUES AND PLUMBING VENTS.
- INSTALL VOLUME CONTROL DAMPERS IN SUPPLY, RETURN, EXHAUST AND FRESH AIR BRANCH DUCT RUNS.
- REGULATING AIR SYSTEMS WITH A FAN CAPACITY GREATER THAN 2,000 NOMINAL CFM SHALL AUTOMATICALLY SHUT DOWN BY MEANS OF AN APPROVED SMOKE DETECTOR PLACED IN THE RETURN AIR STREAM PRIOR TO ANY EXHAUSTS FROM THE BUILDING OR MIXING WITH FRESH AIR MAKEUP. ALL CONTROLS SHALL BE LISTED. UPON ACTIVATION OF THE SAFETY CONTROL, THE SYSTEM SHALL NOT RESTART UNTIL THE SAFETY CONTROL IS MANUALLY RESET.
- ALL MECHANICAL INSTALLATIONS SHALL CONFORM TO THE LATEST ACCEPTABLE MECHANICAL CODE.
- SEAL ALL DUCT SEAMS WITH HARDCAST IRON GRIP 601 SEALANT SYSTEM OR AN APPROVED EQUAL. DUCT TAPE, WHETHER LISTED OR NOT, WILL NOT BE ACCEPTED.
- FABRICATE AND INSTALL ALL GALVANIZED DUCT SYSTEMS TO SMACNA DUCT CONSTRUCTION STANDARDS, LATEST EDITION, AND MECHANICAL CODE.
- FABRICATE AND INSTALL AUXILIARY CONDENSATE DRAIN PAN UNDER ENTIRE AIR HANDLER WITH CONDENSATE PAN SWITCH INTERLOCKED WITH AIR HANDLER FOR SHUT DOWN WHEN CONDENSATE OVER FLOW IS SENSED.
- EVERY ATTIC OR FURRED SPACE IN WHICH MECHANICAL EQUIPMENT IS INSTALLED SHALL BE ACCESSIBLE BY AN OPENING AND PASSAGEWAY AS LARGE AS THE LARGEST PIECE OF THE EQUIPMENT AND IN NO CASE LESS THAN 22 X 36 INCHES CONTINUOUS FROM THE OPENING TO THE EQUIPMENT AND ITS CONTROLS. THE OPENING TO THE PASSAGEWAY SHALL BE LOCATED NOT MORE THAN 20 FT. FROM THE EQUIPMENT MEASURED ALONG THE CENTERLINE OF SUCH PASSAGEWAY. EVERY PASSAGEWAY SHALL BE UNOBSTRUCTED AND SHALL HAVE SOLID CONTINUOUS FLOORING NOT LESS THAN 24 IN. WIDE FROM THE EQUIPMENT, ON THE CONTROL SIDE AND OTHER SIDES WHERE ACCESS IS NECESSARY FOR SERVICING THE EQUIPMENT. A LEVEL PLATFORM EXTENDING A MINIMUM 30 IN. FROM THE EDGE OF THE EQUIPMENT WITH A 36 IN. HIGH CLEAR WALKING SPACE SHALL BE PROVIDED. TOP OR BOTTOM SERVICE EQUIPMENT SHALL HAVE A FULL CLEARANCE ABOVE OR BELOW THE UNIT FOR COMPONENT REMOVAL.
- SMOKE DETECTOR PROVIDED AND INSTALLED BY MECHANICAL CONTRACTOR.
- SUPPLY AIR SYSTEMS AND RETURN SYSTEMS INSTALLED IN AN ATTIC, VENTILATED GRAVEL SPACE OR OTHER NON-CONDITIONED AREA SHALL BE INSULATED.
- SPRINKLER CONTRACTOR TO BE RESPONSIBLE FOR ROUTING ALL SPRINKLER PIPING TO AVOID ALL UNCONDITIONED SPACES.
- DO NOT SCALE DIRECTLY FROM THE HVAC DRAWINGS. REFER TO ARCHITECTURAL DRAWINGS FOR ALL DIMENSIONAL INFORMATION.

## HVAC KEYED NOTES

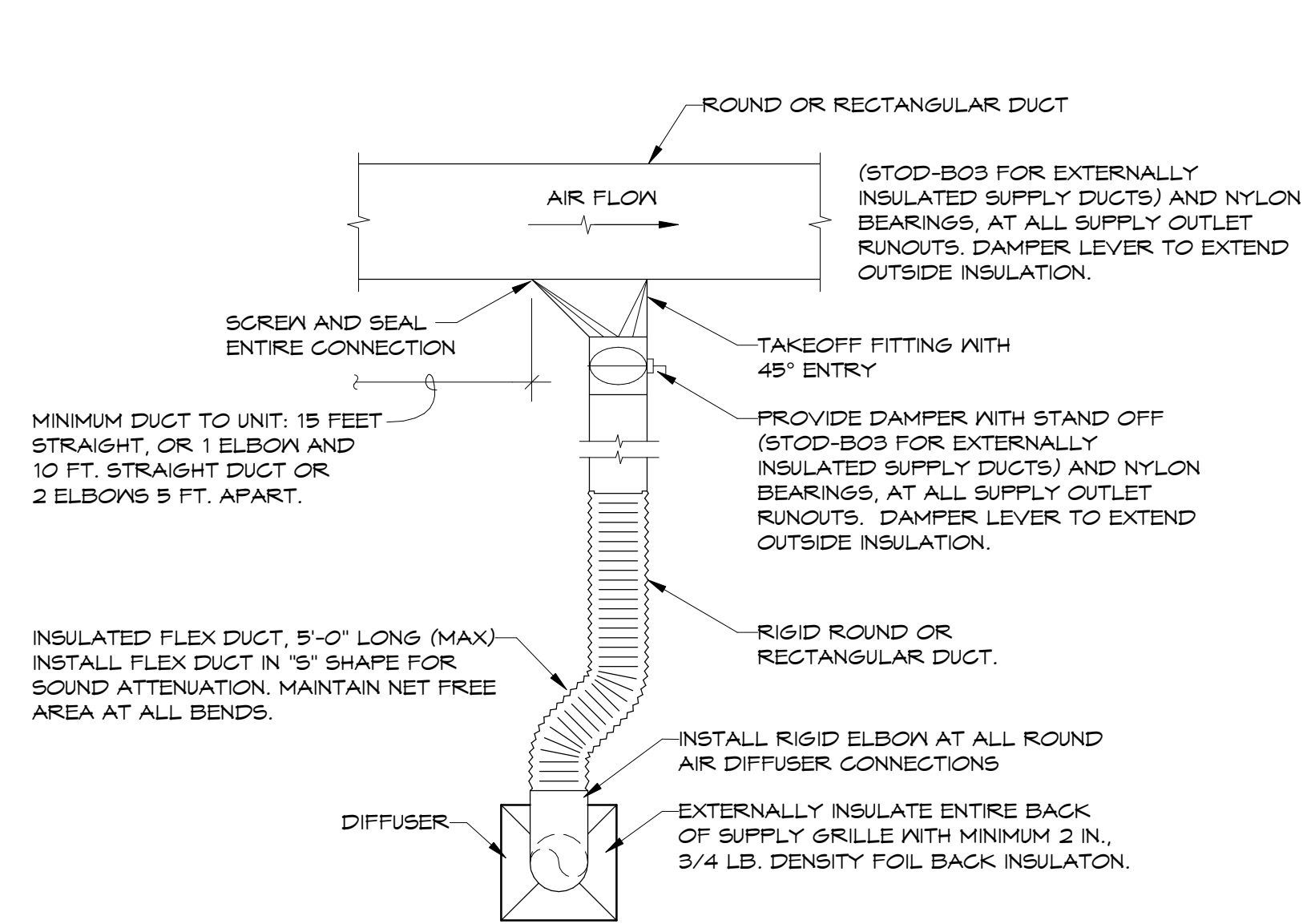
- LOCATE THERMOSTAT, CO2 SENSOR OR HUMIDISTAT AS INDICATED WITH THE CENTER OF THE THERMOSTAT AT 48" IN. ABOVE FINISHED FLOOR. SEAL ALL THERMOSTAT CONDUITS AT TOP AND BOTTOM OF CONDUIT. PROVIDE INSULATED BACKING FOR MOUNTING THERMOSTATS.

## MECHANICAL LEGEND

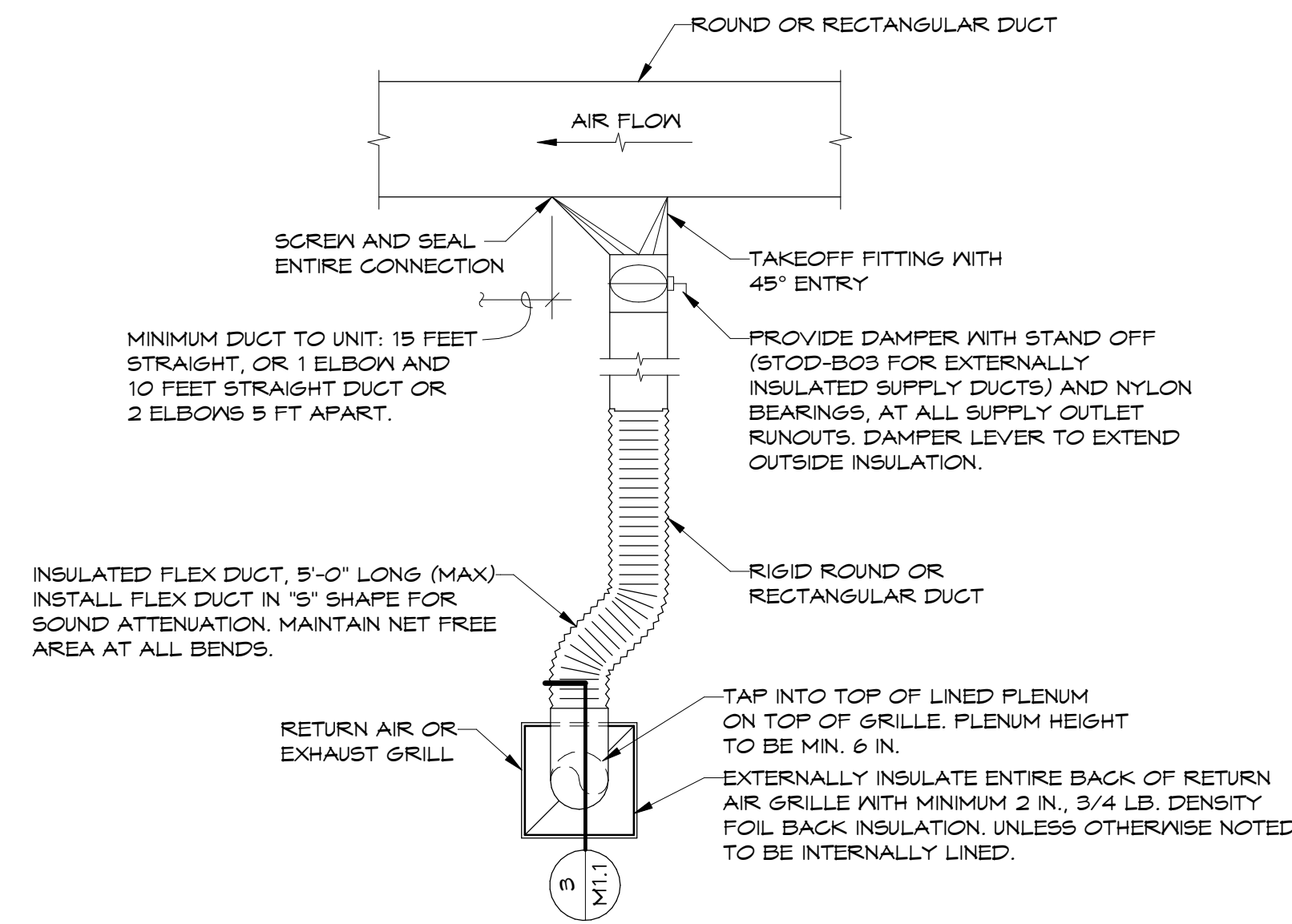
- |                                    |   |
|------------------------------------|---|
| ☐ SUPPLY DUCT SECTION              | ☐ SUPPLY, RETURN, OR EXHAUST DUCT                                 |
| ☐ RETURN OR EXHAUST DUCT SECTION   | ☐ EXISTING SUPPLY, RETURN, OR EXHAUST DUCT                        |
| ☐ CEILING SUPPLY GRILLE            | ☐ VOLUME DAMPER   |
| ☐ CEILING RETURN GRILLE            | ☐ FLEX DUCT CONNECTION MAXIMUM OF 5 FT.                           |
| ☐ CEILING EXHAUST GRILLE           | ☐ SMOKE DETECTOR  |
| ☐ SIDENALL SUPPLY OR RETURN GRILLE | ☐ THERMOSTAT, MOUNT AT 48" A.F.F. TO TOP (NUMBER DENOTES VAV BOX) |
| ① SEE KEYED NOTES                  |   |

AIR DISTRIBUTION SCHEDULE									
MARK	CFM	NECK SIZE	WFS	MODEL	TYPE	FINISH	FRAME	REMARKS/ACCESSORIES	
A	75-100	12"x12" / 8"φ	PRICE	ASPD	FLAQUE CEILING SUPPLY	WHITE	LAY-IN	1, 2, 4, 7	
B	105-240	24"x24" / 8"φ	PRICE	ASPD	FLAQUE CEILING SUPPLY	WHITE	LAY-IN	1, 2, 4	
C	245-350	24"x24" / 10"φ	PRICE	ASPD	FLAQUE CEILING SUPPLY	WHITE	LAY-IN	1, 2, 4	
D	355-450	24"x24" / 12"φ	PRICE	ASPD	FLAQUE CEILING SUPPLY	WHITE	LAY-IN	1, 2, 4	
E	375	24"x24" / 12"φ	PRICE	ASPD	FLAQUE CEILING SUPPLY	WHITE	SURFACE	1, 2, 4	
F	150-400	14" X 6"	PRICE	22	AIRFOIL SIDENALL SUPPLY	WHITE	SURFACE	3, 4, 5, 6	
G	125	48"X4" / 8"φ	PRICE	SDS100	1"-2 SLOT, 4FT SLOT DIFFUSER	WHITE	SURFACE	4, 7, 8	
H	100	36"X4" / 6"φ	PRICE	SDS100	1"-2 SLOT, CONTINUOUS SLOT DIFFUSER	WHITE	SURFACE	4, 7, 8, 9	
J	-	22" X 22"	PRICE	695	LOUVERED CEILING RETURN	WHITE	LAY-IN	2, 4, 5, 8, 10	
K	-	20" X 20"	PRICE	695	LOUVERED CEILING RETURN	WHITE	SURFACE	2, 4, 5, 7, 8, 10	
L	150	48"X4" / 8"φ	PRICE	SDS100	1"-2 SLOT, CONTINUOUS SLOT DIFFUSER	WHITE	SURFACE	4, 7, 8, 9	
M	-	24" X 12"	PRICE	6102	LOUVERED SIDENALL RETURN	WHITE	SURFACE	3, 4, 5, 8, 11	
N	-	12" X 12"	PRICE	6102	LOUVERED SIDENALL RETURN	WHITE	SURFACE	3, 4, 5, 8, 11	
O	375	12"φ	PRICE	RCDA	ROUND CONE SUPPLY DIFFUSER	WHITE	DUCT MOUNT	4	

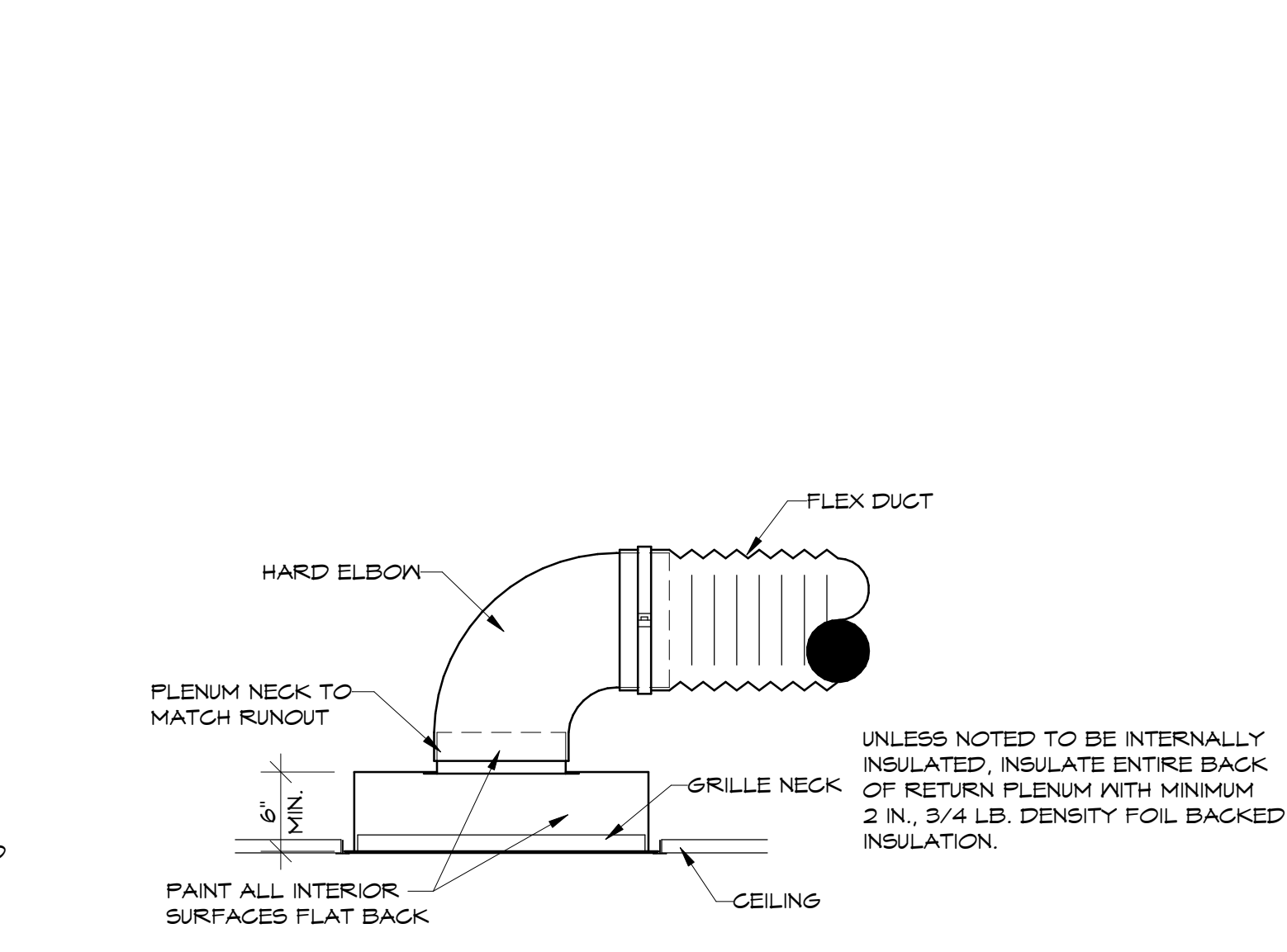
- REMARKS/ACCESSORIES
- OPPOSED BLADE DAMPERS.
  - INSULATED BACK PAN.
  - PROVIDE DOUBLE DIRECTIONAL BLADES.
  - ALUMINUM CONSTRUCTION.
  - NO SCREEN HOLES.
  - PROVIDE WITH COUNTER-SUNK SCREEN HOLES.
  - PROVIDE RAPID-MOUNT FRAME FOR GRILLES IN GYPSUM CEILINGS.
  - INSULATED FLENUM.
  - MUD IN FRAME. ACCESSORIES FOR CONTINUOUS LOCK, END CAPS. REFER TO PLANS FOR TOTAL SLOT LENGTH.
  - 45° DEFLECTION, 1/2" SPAGINS.
  - 0° DEFLECTION, 3/4" SPAGINS.



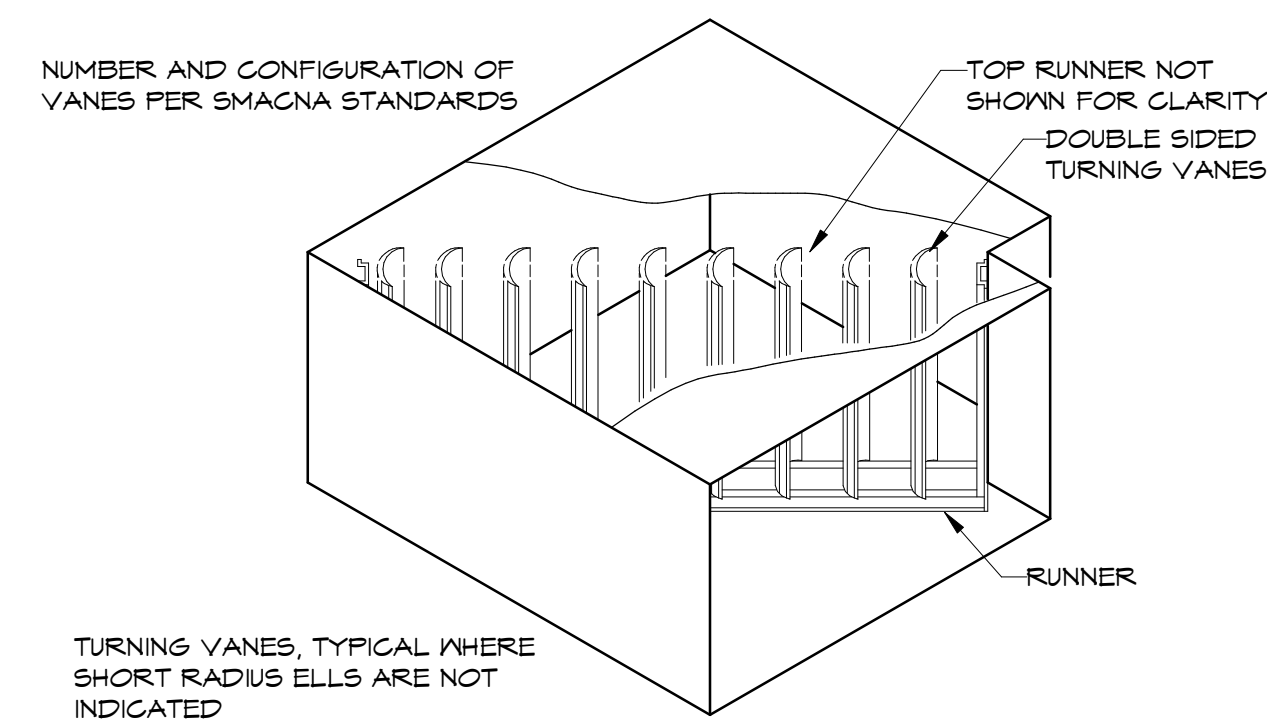
① SUPPLY DUCT CONNECTION DETAIL  
NTS



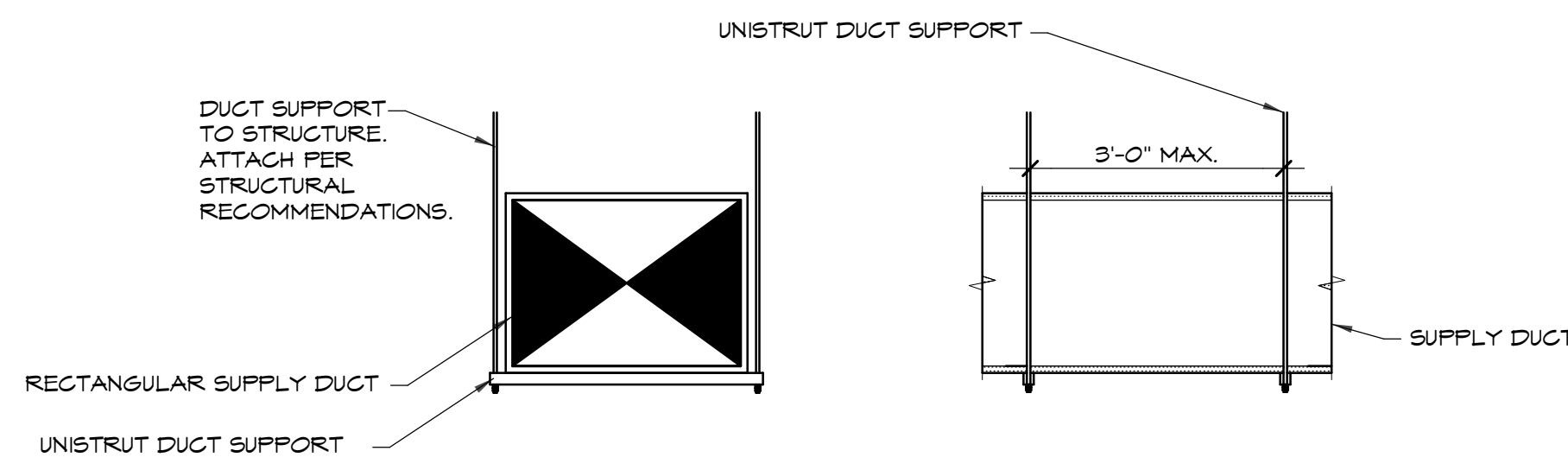
② RETURN DUCT CONNECTION DETAIL  
NTS



③ RETURN GRILLE CONNECTION SECTION  
NTS



④ TURNING VANE DETAIL  
NTS



⑤ DUCT SUPPORT DETAIL  
NTS

NOTES:  
REFER TO SHEET M1.1 FOR HVAC LEGEND, SCHEDULE, DETAILS, GENERAL AND KEYED NOTES.  
REFER TO SHEETS M2.1 FOR HVAC PLANS.  
REFER TO SHEETS MD2.1 FOR HVAC DEMOLITION PLANS.

**HSA** Engineering  
501 / 327 / 5757 office  
515 Locust Avenue  
Conway, Arkansas 72034  
HSAConsultants.com

**scJohnson**  
A family company  
at work for a better world

SC JOHNSON AR - STE 300  
RENOVATION

903 N. 47TH ST. STE 300  
ROGERS, AR 72756



11	ISSUE FOR CONSTRUCTION	03/23/2026
2	5	ISSUE FOR BID & PERMIT
2	90% CD REVIEW	11/11/2025

DELTA ISSUE DESCRIPTION DATE

**IA** INTERIOR ARCHITECTS

NEW YORK  
100 BROADWAY 12th FLOOR  
NEW YORK CITY, NY 10005  
TEL 212-682-6909

GOOD: INTERIOR ARCHITECTS, P.C. A NEW YORK PROFESSIONAL SERVICES CORPORATION.  
ALL DRAWINGS AND WRITTEN MATERIAL HEREIN CONSTITUTE THE ORIGINAL AND UNPUBLISHED WORK OF THE ARCHITECT, AND THE SAME MAY NOT BE DUPLICATED, USED, OR DISCLOSED WITHOUT THE WRITTEN CONSENT OF THE ARCHITECT.

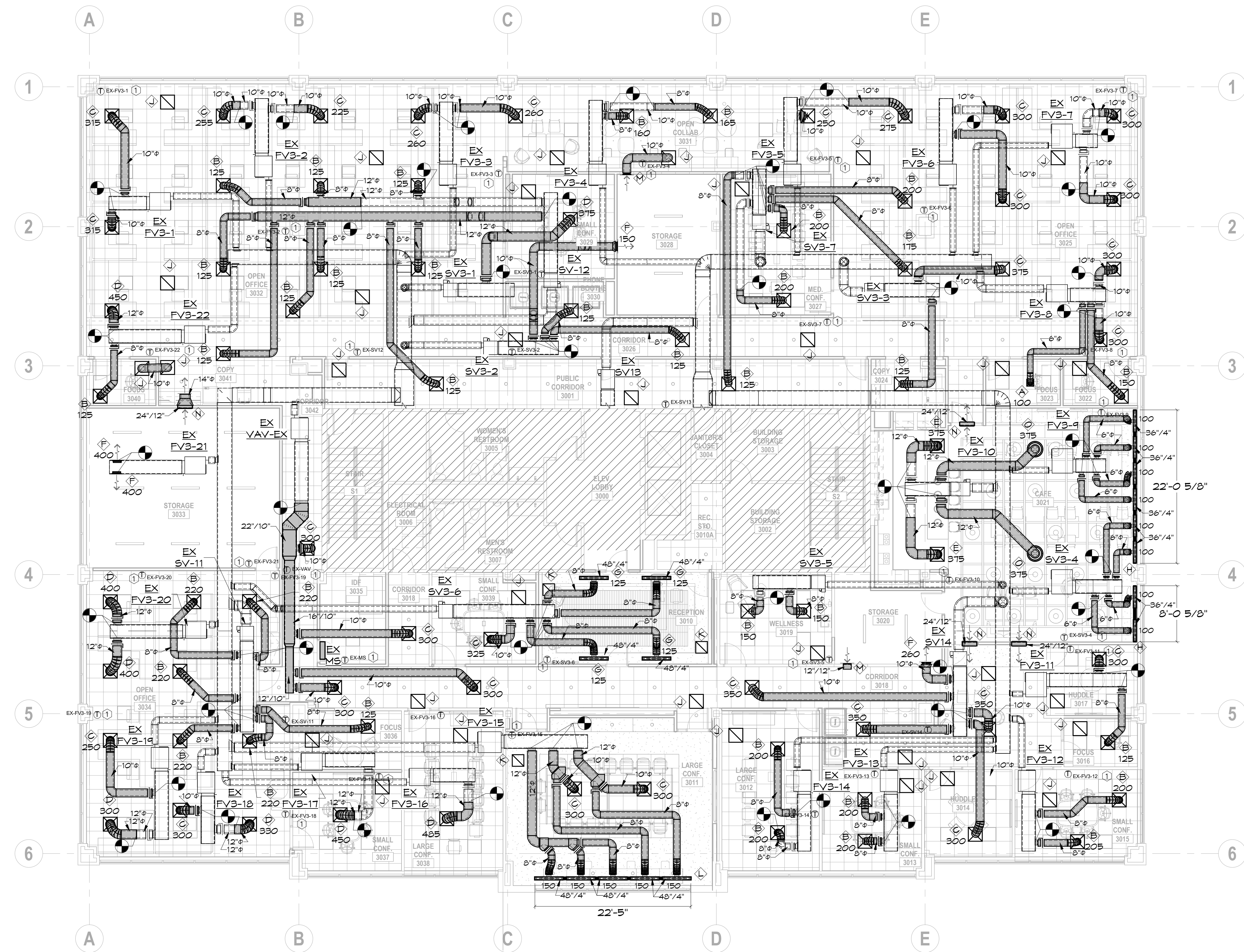
Owner Approval  
05SCJIS.0037.000 NTS  
Job No. Scale

HVAC NOTES, LEGEND,  
DETAILS, & SCHEDULES

M1.1

**SC JOHNSON AR - STE 300  
RENOVATION**

903 N. 47TH ST. STE 300  
ROGERS, AR 72756



11	ISSUE FOR CONSTRUCTION	03/23/2026	
2	5	ISSUE FOR BID & PERMIT	01/07/2026
2	90% CD REVIEW	11/11/2025	

DELTA ISSUE DESCRIPTION DATE

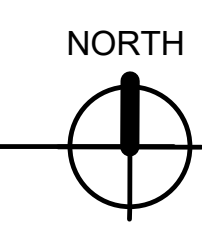


**NEW YORK**  
100 BROADWAY 12th FLOOR  
NEW YORK CITY, NY 10005  
TEL 212-682-6909

©2025 INTERIOR ARCHITECTS, P.C. A NEW YORK PROFESSIONAL SERVICES CORPORATION.  
ALL DRAWINGS AND WRITTEN MATERIALS HEREIN CONSTITUTE THE ORIGINAL AND UNPUBLISHED WORK  
OF THE ARCHITECT, AND THE SAME MAY NOT BE DUPLICATED, USED, OR DISCLOSED WITHOUT THE  
WRITTEN CONSENT OF THE ARCHITECT.

Owner Approval \_\_\_\_\_  
05SCJS.0037.000 1/8" = 1'-0"  
Job No. \_\_\_\_\_ Scale \_\_\_\_\_

**1 HVAC PLAN**  
1/8" = 1'-0"



NOTES:  
REFER TO SHEET M1.1 FOR HVAC LEGEND, SCHEDULE, DETAILS, GENERAL AND KEYED NOTES.  
REFER TO SHEETS M2.1 FOR HVAC PLANS.  
REFER TO SHEETS MD2.1 FOR HVAC DEMOLITION PLANS.

**HSA** HSAEngineering  
501 / 327 / 5757 office  
515 Locust Avenue  
Conway, Arkansas 72034  
HSAConsultants.com

**HVAC PLAN  
M2.1**

HSA JOB #25-178

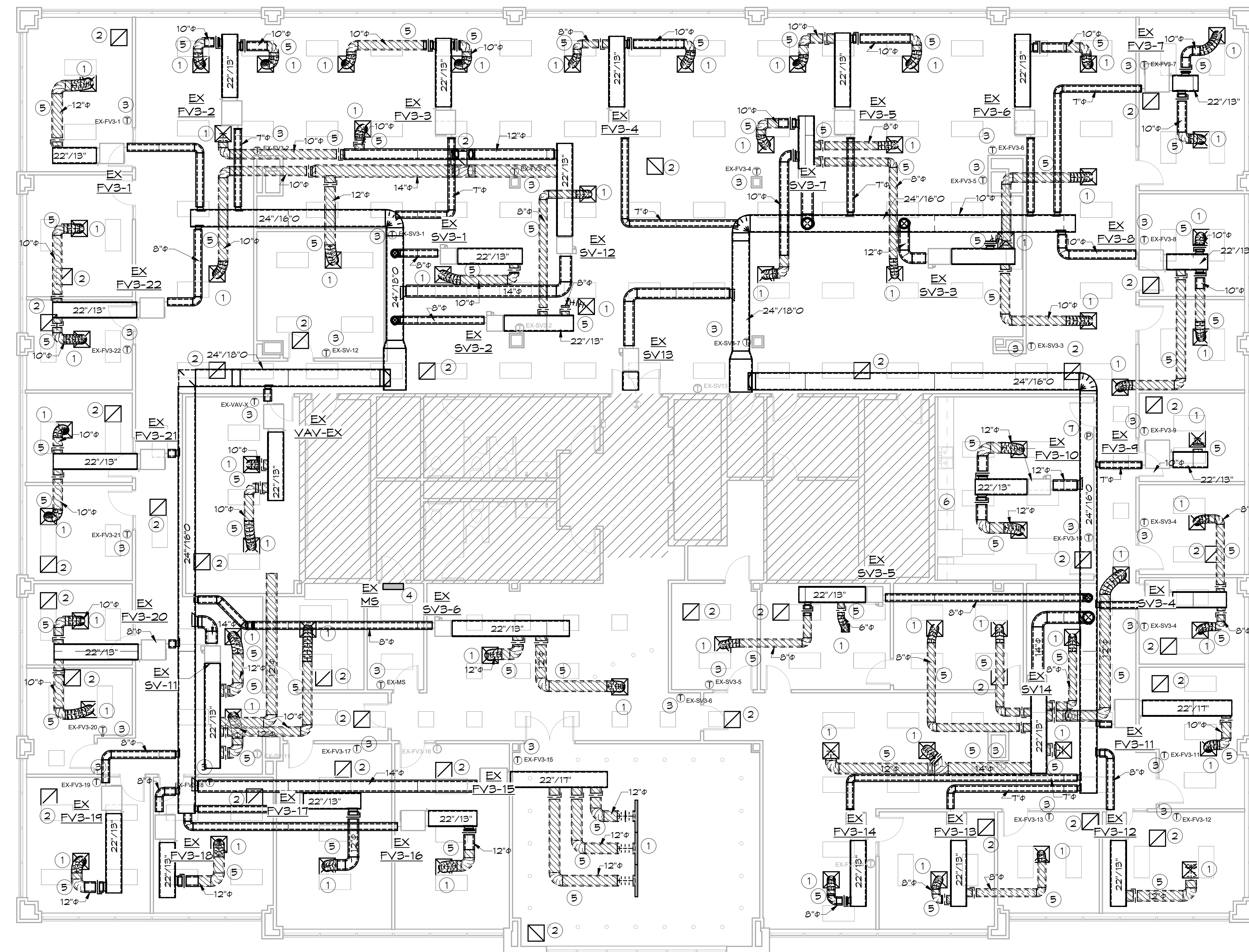
**SC JOHNSON AR - STE 300  
RENOVATION**

903 N. 47TH ST. STE 300  
ROGERS, AR 72756



**HVAC DEMO KEYED NOTES  
(THIS SHEET ONLY)**

- ① REMOVE EXISTING SUPPLY GRILLE
- ② REMOVE EXISTING RETURN GRILLE
- ③ REMOVE & RETAIN EXISTING THERMOSTAT FOR RELOCATION
- ④ RELOCATED & RETAIN EXISTING MINI-SPLIT FOR RELOCATION. EXTEND PIPING AND ELECTRICAL CONNECTIONS TO NEW LOCATION AS SHOWN ON 1/MS.1.
- ⑤ REMOVE EXISTING BRANCH DUCTWORK.
- ⑥ REMOVE EXISTING FIRE SUPPRESSION HOOD ABOVE RESIDENTIAL RANGE.
- ⑦ REMOVE EXISTING FIRE SUPPRESSION PULL STATION.



**① HVAC DEMOLITION PLAN**  
1/8" = 1'-0"



NOTES:  
REFER TO SHEET M1.1 FOR HVAC LEGEND, SCHEDULE, DETAILS, GENERAL AND KEYED NOTES.  
REFER TO SHEETS M2.1 FOR HVAC PLANS.  
REFER TO SHEETS MD2.1 FOR HVAC DEMOLITION PLANS.

**HSA** Engineering  
501 / 327 / 5757 office  
515 Locust Avenue  
Conway, Arkansas 72034  
HSAConsultants.com

HSA JOB #25-170

11	ISSUE FOR CONSTRUCTION	03/23/2026
2	5 ISSUE FOR BID & PERMIT	01/07/2026
2	90% CD REVIEW	11/11/2025

DELTA ISSUE DESCRIPTION DATE



**NEW YORK**  
100 BROADWAY 12th FLOOR  
NEW YORK CITY, NY 10005  
TEL 212-682-6909

©2025 INTERIOR ARCHITECTS, P.C. A NEW YORK PROFESSIONAL SERVICES CORPORATION.  
ALL DRAWINGS AND WRITTEN MATERIALS HEREIN CONSTITUTE THE ORIGINAL AND UNPUBLISHED WORK  
OF THE ARCHITECT, AND THE SAME MAY NOT BE REPRODUCED, USED, OR DISCLOSED WITHOUT THE  
WRITTEN CONSENT OF THE ARCHITECT.

Owner Approval  
05SCJIS.0037.000 1/8" = 1'-0"  
Job No. Scale

**MECHANICAL DEMO PLAN  
MD2.1**