

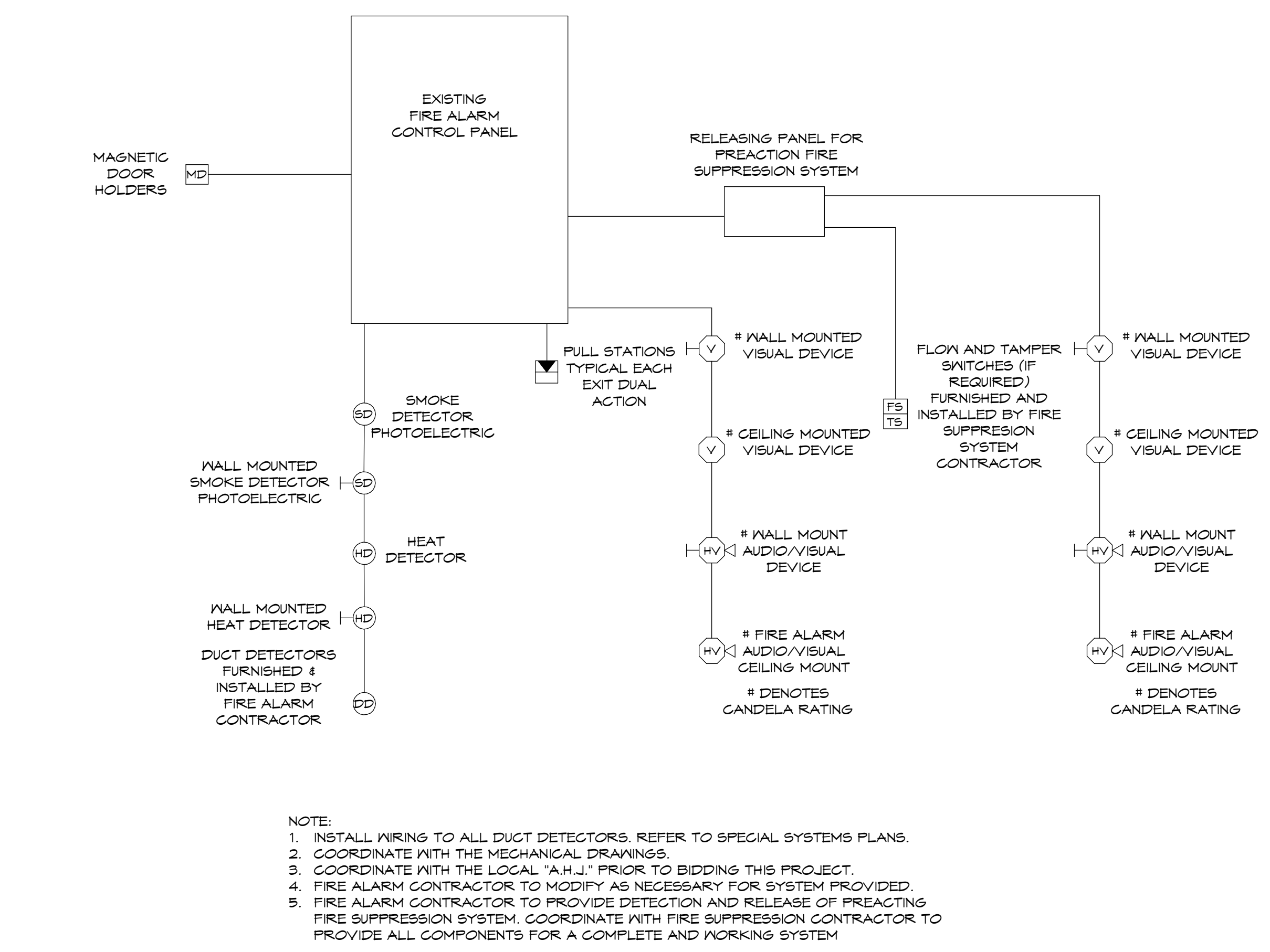
- LEGEND**
- ⊖ USB DUPLEX RECEPTACLE TYPE USB20X2
 - ⊕ DUPLEX RECEPTACLE (NEMA 5-20R) OR-DOUBLE DUPLEX, TAMPER RESISTANT, COMMERCIAL SPECIFICATION GRADE.
 - 220 VOLT RECEPTACLE (NUMBER DENOTES AMPS)
 - ⊖ DUPLEX RECEPTACLE GROUND FAULT NEMA 5-20R, TAMPER RESISTANT, COMMERCIAL SPECIFICATION GRADE.
 - ⊖ DUPLEX RECEPTACLE GROUND FAULT TYPE GFS962, MOUNTED WITH ROOF TOP HVAC UNIT DISCONNECT.
 - TV TELEVISION CABLE OUTLET VERIFY EXACT LOCATION AND MOUNTING HEIGHT WITH THE ARCHITECT AND AV CONSULTANT PRIOR TO ROUGH-IN. REQUIRES RECEPTACLE, ONE (1) 1" CONDUIT, AND 2 NETWORK CABLES IN SEPARATE 1" CONDUIT TO IDF ROOM. PROVIDE 3 GANG BACK BOX ARLINGTON #TVB5507 OR APPROVED EQUAL. PROVIDE PULLSTRINGS.
 - FB WIREMOLD TYPE "RFBAG30-06" FLOOR BOX WITH TWO DUPLEX RECEPTACLE, AND TWO COMMUNICATION BRACKETS TO MATCH OWNER'S DATA EQUIPMENT. INSTALL ONE 1" CONDUIT FOR POWER AND ONE 1" CONDUIT FOR DATA. INCLUDE ONE BRASS COVER, TYPE 80T FLUSH COVER, AT EACH LOCATION. SET BOX HEIGHT WITH FLOOR TYPE. COVER IS TO BE FLUSH IN FLOOR. (FOR BARE POLISHED CONCRETE FLOOR PROVIDE RTBSE CONCRETE EDGE BARRIER KIT). PROVIDE A MINIMUM OF TWO DATA CABLES AT EACH LOCATION. IF FEEDING MULTIPLE COMPUTERS PROVIDE TWO DATA CABLES FOR EACH COMPUTER COORDINATE WITH ARCHITECT.
 - ⊖ DATA: REQUIRES 4" SQUARE OUTLET BOX, APPROPRIATE PLASTER RING, AND 1" C. STUBBED TO AN ACCESSIBLE LOCATION ABOVE A REMOVABLE CEILING TILE. MINIMUM OF TWO DATA CABLES AT EACH LOCATION SHOWN UNLESS OTHERWISE NOTED.
 - ⊖ FLUSH MOUNTED JUNCTION BOX VERIFY MOUNTING HEIGHT WITH MILLWORK DETAILS AND/OR THE OWNER'S REPRESENTATIVE. AT EQUIPMENT LOCATIONS VERIFY THE EXACT LOCATION WITH THE EQUIPMENT INSTALLER PRIOR TO ROUGH-IN.
 - FI/NFI FUSED/NON-FUSED DISCONNECT-FUSE ALL EQUIPMENT PER MANUFACTURER RECOMMENDATION FOR THE ACTUAL EQUIPMENT FURNISHED. FURNISH NEMA-4X IN THE KITCHEN. MOUNT DISCONNECT FOR HVAC CONDENSER UNITS WITH TOP OF SWITCH AT 36" A.F.F.
 - MP MOTOR - VERIFY THE SIZE WITH ACTUAL EQUIPMENT FURNISHED. NUMBER REPRESENTS HORSE POWER RATINGS.
 - 3M MOTOR RATED SWITCH USED FOR EQUIPMENT DISCONNECTING MEANS. SINGLE PHASE. PROVIDE WITH THERMAL OVERLOAD SIZED PER MOTOR LOAD.
 - S60 SINGLE POLE SWITCH FOR GARBAGE DISPOSER. WIRE RECEPTACLE TO SWITCHED UPPER HALF.
 - S SWITCH TYPE 1221 (3" INDICATES 3-WAY SWITCH, 'D' INDICATES DIMMER COORDINATE WITH FIXTURE/LAMP TYPE AND CIRCUIT MATTAGE.
 - 3M WALL MOUNTED DUAL TECHNOLOGY MOTION SENSOR SWITCH WIRE PER MANUFACTURER'S RECOMMENDATION. PROVIDE CONTACTORS TO CONTROL EXHAUST FAN WITH LIGHTS.
 - 3M WALL MOUNTED PASSIVE INFRARED COMBINATION MOTION SENSOR SWITCH AND SINGLE POLE WALLBOX SLIDE DIMMER. WIRE PER MANUFACTURER'S RECOMMENDATION. PROVIDE CONTACTORS TO CONTROL EXHAUST FAN WITH LIGHTS. LEVITON OSD10 OR EQUAL.
 - 3M 'OS' - WALL MOUNTED DUAL TECHNOLOGY MOTION SENSOR PROVIDE AND INSTALL THE APPROPRIATE POWER PACK. COORDINATE SWITCHING WITH ACTUAL MOTION SENSOR USED. WIRE PER MANUFACTURER'S RECOMMENDATION. PROVIDE OCCUPANCY SENSOR WHICH IS THE CORRECT TYPE FOR THE SPACE. PROVIDE CONTACTORS TO CONTROL EXHAUST FAN WITH LIGHTS.
 - 3M 'OS' - WALL MOUNTED DUAL TECHNOLOGY MOTION SENSOR PROVIDE AND INSTALL THE APPROPRIATE POWER PACK. COORDINATE SWITCHING WITH ACTUAL MOTION SENSOR USED. COORDINATE LOCATION AND NUMBER WITH ACTUAL MOTION SENSOR USED. WIRE PER MANUFACTURER'S RECOMMENDATION. PROVIDE OCCUPANCY SENSOR WHICH IS THE CORRECT TYPE FOR THE SPACE.
 - EXIT LIGHT - ARROW DENOTES INCLUSION OF ARROW ON LENS. CONTRACTOR TO COORDINATE PROPER MOUNTING DETAILS.
 - TF-1-2 THERMOSTAT, MOUNT, @ 48" A.F.F. TO CENTER OF BOX (NUMBER DENOTES HVAC UNIT).
 - FB PUSHBUTTON FOR DOOR RELEASE. PROVIDE DOUBLE GANG FLUSH BACKBOX WITH SINGLE GANG FLUSH WALL OPENING AND EMPTY 3/4" CONDUIT STUBBED TO NEAREST ACCESSIBLE LAY IN CEILING.
 - REX REQUEST TO EXT. EC SHALL COORDINATE REQUIREMENTS WITH THE ARCHITECT AND AV CONSULTANT.
 - ELECTRICAL PANEL.
 - DRY TYPE TRANSFORMER-480/120-208 VOLTS. PROVIDE VIBRATION-ISOLATION MOUNTING PADS.
 - BRANCH CIRCUIT HOMERUN. PANEL AND CIRCUIT NUMBER INDICATED.
 - DUCT DETECTOR-FURNISHED AND INSTALLED BY THE FIRE ALARM CONTRACTOR. COORDINATE QUANTITY AND LOCATION WITH MECHANICAL PLANS.
 - FACP FIRE ALARM CONTROL PANEL MOUNTED 50" A.F.F.
 - MANUAL PULL STATION MOUNTED MINIMUM OF 42"; MAXIMUM OF 48" A.F.F.
 - FIRE ALARM MODULE FOR CONTROL. PROVIDE ALL LOW VOLTAGE WIRING.
 - PHOTOELECTRIC SMOKE DETECTOR. WALL MOUNTED
 - HEAT DETECTOR. WALL MOUNTED
 - PHOTOELECTRIC SMOKE DETECTOR. CEILING MOUNTED
 - HEAT DETECTOR. CEILING MOUNTED
 - CELLING FIRE ALARM VISUAL STROBE LIGHT-WP DENOTES WEATHER RESISTANT. REQUIRES 4" SQUARE BOX WITH 3/4" CONDUIT STUBBED ABOVE ACCESSIBLE CEILING. NUMBER DENOTES CANDELA RATING.
 - WALL MOUNT FIRE ALARM VISUAL STROBE LIGHT-WP DENOTES WEATHER RESISTANT. REQUIRES 4" SQUARE BOX WITH 3/4" CONDUIT STUBBED ABOVE ACCESSIBLE CEILING. NUMBER DENOTES CANDELA RATING.
 - WALL MOUNT FIRE ALARM HORN/STROBE LIGHT-WP DENOTES WEATHER RESISTANT. REQUIRES 4" SQUARE BOX WITH 3/4" CONDUIT STUBBED ABOVE ACCESSIBLE CEILING. NUMBER DENOTES CANDELA RATING.
 - CELLING FIRE ALARM HORN/STROBE LIGHT-WP DENOTES WEATHER RESISTANT. REQUIRES 4" SQUARE BOX WITH 3/4" CONDUIT STUBBED ABOVE ACCESSIBLE CEILING. NUMBER DENOTES CANDELA RATING.
 - DETAIL NUMBER
 - SHEET NUMBER
- SUBSCRIPTS:**
- C = COORDINATE LOCATION WITH MILLWORK-MOUNTING HEIGHTS VARY. REFER TO THE ARCHITECTURAL MILLWORK DRAWINGS.
 - K = LOCATED IN KNEE SPACE. COORDINATE LOCATION WITH MILLWORK-MOUNTING HEIGHTS VARY. REFER TO THE ARCHITECTURAL MILLWORK DRAWINGS.
 - W = WALL MOUNTED @ 48" A.F.F.-OR AS SHOWN.
 - GF = GROUND FAULT CIRCUIT INTERRUPTER.
 - WP = WEATHER RESISTANT RECEPTACLES ARE "GFI", WITH METAL WEATHER RESISTANT "WHILE-IN-USE" COVERS.
 - MP = MICROWAVE OVEN.
 - GD = GARBAGE DISPOSER.
 - EM = FIXTURE CONTAINS EMERGENCY BATTERY PACK.
 - NL = UNSWITCHED EMERGENCY FIXTURE.
 - H = MOUNT HORIZONTALLY IN MILLWORK.
 - EC = ELECTRICAL CONTRACTOR.
 - AFF = ABOVE FINISHED FLOOR.
 - AFS = ABOVE FINISHED GRADE.
 - BWC = ELECTRIC WATER COOLER.
 - EAH = ELECTRIC WATER HEATER.
 - NTS = NOT TO SCALE.
 - ER = EXISTING TO REMAIN.

GENERAL ELECTRICAL NOTES-ALL SHEETS
THESE NOTES ARE ONLY A SUPPLEMENT TO THE SPECIFICATIONS

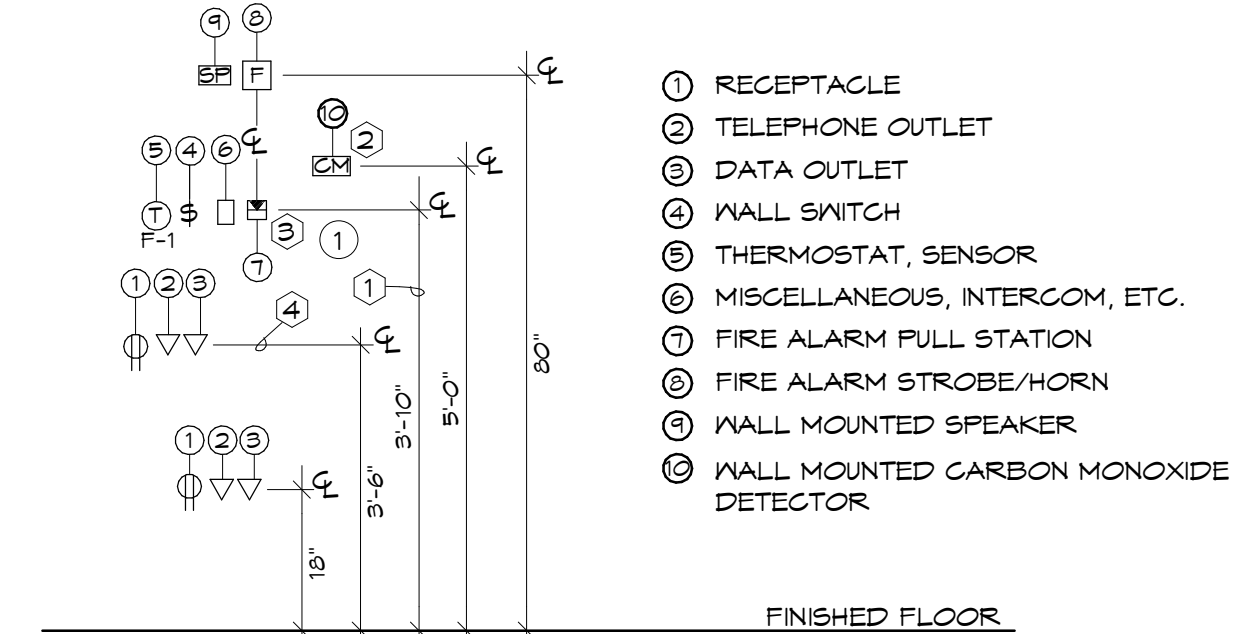
1. THE ELECTRICAL CONTRACTOR IS RESPONSIBLE FOR A COMPLETE WORKING INSTALLATION.
2. THIS CONTRACTOR IS TO COMPLY WITH THE STATE ADOPTED ADA ACCESSIBLE GUIDELINES IN REGARD TO ACCESSIBLE FEATURES.
3. AT ALL MILLWORK LOCATIONS COORDINATE THE ELECTRICAL INSTALLATION WITH THE ARCHITECTURAL DRAWINGS.
4. PROVIDE FIRE RATED GASKING WHERE CONDUIT OR OTHER ELECTRICAL ITEMS PASS THROUGH FIRE-RATED WALLS, CEILING AND FLOORS.
5. INSTALL ALL CONDUIT STRAIGHT AND PARALLEL WITH THE BUILDING LINES. ALL CONDUIT IS CONCEALED IN PUBLIC PLACES.
6. THE ELECTRICAL CONTRACTOR IS RESPONSIBLE FOR ALL PERMIT AND FEE COSTS AND SHALL INCLUDE THESE COSTS IN THE BID PRICE FOR THIS PROJECT.
7. THE ENTIRE ELECTRICAL INSTALLATION SHALL CONFORM TO THE LATEST ADOPTED EDITION OF THE NATIONAL ELECTRICAL CODE AND ALL APPLICABLE LOCAL CODES AND ORDINANCES. IF A CONFLICT IS FOUND BETWEEN APPLICABLE CODES, THE MORE STRINGENT SHALL APPLY. THE CONTRACTOR SHALL BE COMPLETELY FAMILIAR WITH ALL APPLICABLE MUNICIPAL CODES AND ORDINANCES.
8. THE SUBMISSION OF A PROPOSAL WILL BE CONSIDERED EVIDENCE THAT THE CONTRACTOR HAS FAMILIARIZED THEMSELVES WITH THE DRAWINGS, SPECIFICATION BOOK, THE BUILDING SITE AND OTHER INFORMATION PRESENTED FOR THE CONSTRUCTION OF THIS PROJECT. CLAIMS MADE SUBSEQUENT TO THE PROPOSAL FOR MATERIALS AND LABOR BECAUSE OF DIFFICULTIES ENCOUNTERED WILL NOT BE RECOGNIZED IF THEY COULD HAVE BEEN FORESEEN HAD A COMPLETE AND THOROUGH EXAMINATION BEEN MADE.
9. DO NOT SCALE DIRECTLY FROM THE ELECTRICAL DRAWINGS. REFER TO THE ARCHITECTURAL DRAWINGS FOR DIMENSIONAL INFORMATION.
10. THE CONTRACTOR SHALL GUARANTEE ALL WORK FOR WHICH MATERIALS ARE FURNISHED. FABRICATED OR FIELD ERected. THIS CONTRACTOR GUARANTEE SHALL EXIST FOR A PERIOD OF ONE YEAR FROM THE DATE OF FINAL OWNER ACCEPTANCE OF THE WORK AND SHALL APPLY TO ALL DEFECTS IN MATERIALS AND/OR WORKMANSHIP OF ANY KIND.
11. WHERE JOB CONDITIONS REQUIRE CHANGES FROM THE CONTRACT DOCUMENTS THAT DO NOT CHANGE THE SCOPE OR NATURE OF THE WORK REQUIRED, THE CONTRACTOR SHALL MAKE SUCH CHANGES WITHOUT ADDITIONAL COST TO THE OWNER. NO OTHER CHANGES WILL BE MADE WITH OUT THE EXPRESSED WRITTEN CONSENT OF THE OWNER.
12. IT IS THE RESPONSIBILITY OF THE ELECTRICAL CONTRACTOR TO COORDINATE WITH ALL OTHER TRADES TO INSURE THAT ALL CIRCUITS AND DEVICES ARE OF A PROPER SIZE FOR ACTUAL EQUIPMENT FURNISHED. THE ENGINEER SHALL BE NOTIFIED OF ANY CONFLICT WHICH CAUSES CHANGES TO ANY SYSTEM AS DESIGNED ON THESE DRAWINGS. FAILURE ON THE PART OF THE CONTRACTOR TO NOTIFY THE ENGINEER OR ARCHITECT OF SUCH CONFLICTS PLACES THE SUBSEQUENT CHANGES UPON THE CONTRACTOR.
13. THE ELECTRICAL CONTRACTOR IS TO PROVIDE, AT YET TO BE DECIDED LOCATIONS, TWENTY (20) SINGLE GANG STUB-UPS WHICH ARE TO INCLUDE 4" OUTLET BOXES, PLASTER RINGS, COVER PLATES, AND CONDUIT TO ABOVE THE CEILING, TEN (10) ONE GANG AND TEN (10) TWO GANG. IN ADDITION, PROVIDE TEN (10) SINGLE GANG STUB-UPS WHICH ARE TO INCLUDE 4" OUTLET BOXES, PLASTER RINGS, COVER PLATES, INCLUDING ONE RECEPTACLE OR SWITCH WITH 80 AMP CIRCUIT BREAKER PER SINGLE GANG STUB-UP. COMBINED TOTAL NUMBER OF STUB-UPS REQUIRED IS THIRTY (30).
14. ALLOW FOR THE ADDITION OF THREE (3) NEW EXT LIGHTS WITH WIRING TO UNSWITCHED LIGHTING CIRCUIT.
15. THE ELECTRICAL CONTRACTOR IS RESPONSIBLE FOR THE FOLLOWING SYSTEMS:
 - A. POWER AND LIGHTING
 1. ALL DEVICE PLATES ARE NYLON. COORDINATE COLOR OF DEVICES WITH THE ARCHITECT.
 2. ALL 20A 120V AND 250V NON-LOCKING TYPE RECEPTACLES, UNLESS OTHERWISE NOTED, SHALL BE TAMPER RESISTANT TYPE PER NEC 408.12.
 3. WHERE DEVICES ARE SHOWN NEXT TO EACH OTHER, THEY ARE INTENDED TO BE GANGED. FIELD VERIFY ACTUAL SPACE AVAILABLE AND NOTIFY THE ARCHITECT WHERE THERE ARE SPACE CONFLICTS.
 4. LOW VOLTAGE WIRING IS TO BE ENCASED IN CONDUIT IN AREAS WITH NO CEILING OR HARD CEILING.
 5. RECEPTACLES FOR EQUIPMENT SUCH AS ELECTRIC WATER COOLERS SHALL BE LOCATED IN THE WALL AT A LOCATION WHICH IS CONCEALED BY THE EQUIPMENT CABINET.
 6. ALL EMPTY CONDUITS ARE TO CONTAIN A NYLON PULL STRING. EMPTY CONDUITS 2" AND LARGER ARE TO BE SHABBED OUT AND LEFT WITH A NYLON PULL ROPE FOR THE USE OF THE OWNER.
 7. ELECTRICAL CONTRACTOR TO PROVIDE AND INSTALL DRIVER AND LAMP COMBINATIONS THAT WILL PROVIDE THE OWNER WITH A FIVE YEAR WARRANTY ON THE DRIVER.
 8. COORDINATE WITH THE GENERAL CONTRACTOR AND THE INSULATION CONTRACTOR TO HOLD THE BATT INSULATION AWAY FROM ALL LAY-IN FIXTURES. CLEARANCE SHOULD BE 1/2" MINIMUM AND TOTALLY CLEAR ON THE TOP.
 9. ROOM NUMBERS USED IN THE PANEL SCHEDULES ARE TO REFLECT ROOM NUMBERS BY THE OWNER. ARCHITECT WILL PROVIDE CROSS OVER LIST DURING THE PROJECT.
 10. OCCUPANCY SENSORS ARE TO BE LAID OUT BY THE LIGHTING REPRESENTATIVE. FURNISHING THE EQUIPMENT HSA WILL PROVIDE AUTO CAD DRAWINGS AS NECESSARY. ELECTRICAL CONTRACTOR RESPONSIBLE FOR LOCATION DETAILS AND MOUNTING. SENSORS SHOWN ARE FOR REFERENCE ONLY.
 11. FURNISH 2-2" CONDUIT SLEEVES THROUGH FIRE WALLS UNLESS OTHERWISE NOTED. SEAL PER RATINGS OF THE WALL.
 12. WHERE INDIRECT (SUSPENDED) LIGHTING IS USED, THE ELECTRICAL CONTRACTOR SHALL CONTRACT WITH THE CEILING CONTRACTOR TO PROVIDE THE NECESSARY TIES TO THE STRUCTURE ABOVE AT EACH POINT OF ATTACHMENT OF THE FIXTURE HANGERS.
 13. ALL WIRE AND CABLE SHALL BE SOFT DRAWN COPPER WITH INSULATION CONFORMING TO REQUIREMENTS OF THE NEC AND ALL RELEVANT ASTM SPECIFICATIONS.
 14. ALL WIRE NO. 8 AND LARGER SHALL BE STRANDED; WHERE NO. 12 OR 10 STRANDED IS USED, TERMINATE WITH INSULATED COMPRESSION LUG OF THE PROPER SIZE. E. ALL WIRE SHALL HAVE 600 VOLT TYPE THIN INSULATION, UNLESS SPECIFIED OTHERWISE ON THE PLANS.
 15. WIRE SIZES:

WIRE SIZE 120V	WIRE SIZE 277V
A. #12 LESS THAN 75 FEET	LESS THAN 150 FEET
B. #12 BETWEEN 75-150 FEET	BETWEEN 150-300 FEET
C. #10 BETWEEN 150-250 FEET	BETWEEN 300-450 FEET
D. #8 BETWEEN 250-375 FEET	BETWEEN 450-700 FEET
 - B. FIRE ALARM:
 1. ALL FIRE ALARM OUTLET BOXES ARE TO BE PAINTED RED.
 2. SPRINKLED BUILDING.
 3. THE ELECTRICAL CONTRACTOR SHALL CONTRACT WITH THE LANDLORD'S PREFERRED FIRE ALARM VENDOR.
 4. THE FIRE ALARM CONTRACTOR IS RESPONSIBLE FOR UPDATING PLAN BOX AT THE FIRE ALARM CONTROL PANEL.
 5. INSTALL ALL ALM SYSTEM PER N.F.P.A. AND ALL STATE AND LOCAL ORDINANCES.
 6. FURNISHING ALL DEVICES AND SYSTEMS NECESSARY FOR A COMPLETE ACCEPTABLE SYSTEM. NO EXTRA CHARGES WILL BE ALLOWED. OUTSIDE OF THE CONTRACT PRICE. THE FIRE ALARM CONTRACTOR IS TO SUBMIT PLANS TO THE FIRE MARSHAL FOR FINAL APPROVAL PRIOR TO BEGINNING CONSTRUCTION.
 7. DUCT DETECTORS ARE SUPPLIED AND INSTALLED BY THE FIRE ALARM CONTRACTOR. IT IS THE RESPONSIBILITY OF THE FIRE ALARM CONTRACTOR TO FURNISH ALL WIRING NECESSARY TO CONNECT THESE DEVICES TO THE FIRE ALARM SYSTEM. PROVIDE WITH REMOTE INDICATOR OR SEPARATELY ZONED. COORDINATE QUANTITY AND LOCATION WITH THE MECHANICAL DRAWINGS.
 - C. CONDUIT AND CABLE SYSTEM FOR DATA AND TELEPHONE WIRING.
 1. CONDUIT FOR DATA AND TELEPHONE SYSTEM. TO INCLUDE SLEEVES IN FIRE WALLS.
 2. DATA OUTLETS IN THE FLOOR REQUIRE 1" CONDUIT FROM EACH ONE TO A POINT ABOVE AN ACCESSIBLE CEILING. NO DASHY CHANGING OF DATA OUTLETS/CONDUITS IS ALLOWED.
 3. CABLE IS NOT TO BE INSTALLED EXPOSED. VERIFY WITH MECHANICAL PLANS FOR FLENUM SPACES CABLE IN THESE AREAS IS FLENUM RATED.
 4. ELECTRICAL CONTRACTOR IS TO PROVIDE AND INSTALL JUNCTION BOXES AND EMPTY CONDUIT WITH BUSHINGS AND PULLSTRINGS ONLY. OWNER SHALL INSTALL AND TERMINATE ALL DATA/TELEPHONE WIRING.
 - F. GROUNDING SYSTEM
 1. ALL CONDUITS ARE TO CONTAIN A GREEN GROUNDING CONDUCTOR, SIZED PER THE N.E.C.
 - G. EQUIPMENT REQUIREMENTS:
 1. VERIFY EXACT FUSE SIZE AND EQUIPMENT REQUIREMENTS WITH THE ACTUAL EQUIPMENT FURNISHED BY THE OTHER CONTRACTORS.
 2. ALL HOT WATER CIRCULATION PUMPS ARE TO BE CONTROLLED VIA 1 DAY TIME CLOCKS PROVIDED BY THE MECHANICAL CONTRACTOR.
 3. FINAL EQUIPMENT CONNECTIONS. THE ELECTRICAL CONTRACTOR IS RESPONSIBLE FOR PROVIDING ALL LABOR AND MATERIALS REQUIRED TO MAKE FINAL ELECTRICAL CONNECTIONS TO ALL EQUIPMENT FURNISHED ON THIS PROJECT. VERIFY ALL REQUIREMENTS, CONDUCTOR SIZES, OVERCURRENT PROTECTION, PHASES, VOLTAGES, MOTOR ROTATION, ETC., WITH THE EQUIPMENT SUPPLIER PRIOR TO ROUGH-IN. PROVIDE FUSED DISCONNECT IF REQUIRED BY MANUFACTURER. FURNISH HARD WIRING FOR ALL WATER HEATERS AND CIRCULATION PUMPS.
 4. THE ELECTRICAL CONTRACTOR IS TO PROVIDE ALL CONTRACTORS, MAGNETIC STARTERS, AND MISCELLANEOUS WIRING NECESSARY TO CONTROL EXHAUST FANS AND OTHER AUTOMATICALLY OPERATED EQUIPMENT. THE CONTROLS CONTRACTOR IS TO FURNISH ONE RELAY PER ITEM AS COMPATIBLE WITH THEIR CONTROL SYSTEM.
 - H. HVAC CONTROL:
 1. THE ELECTRICAL CONTRACTOR SHALL PROVIDE CONDUIT FROM EACH HVAC UNIT TO ITS RESPECTIVE HUMIDISTAT AND/OR SENSORS.
 2. THE ELECTRICAL CONTRACTOR SHALL PROVIDE ALL CONDUIT AND WIRING NECESSARY FOR LINE VOLTAGE CONTROL SYSTEMS.
 3. ALL LOW VOLTAGE CONTROL WIRING SHALL BE ENCLOSED IN CONDUIT IN SPACES WITH NO CEILING.
 4. COORDINATE ALL HVAC WIRING WITH THE MECHANICAL DRAWINGS AND THE MECHANICAL CONTRACTOR.
 5. THE ELECTRICAL CONTRACTOR IS TO PROVIDE A MAGNETIC STARTER FOR EACH EXHAUST FAN. THIS STARTER IS CONTROLLED BY THE LIGHTING/MOTION SENSOR SYSTEM.
 6. THE ELECTRICAL CONTRACTOR IS TO PROVIDE AND INSTALL ALL LINE VOLTAGE THERMOSTATS.
 - I. ADDITIONAL INFORMATION
 1. REFER TO THE ARCHITECTURAL DEMOLITION PLAN FOR SCOPE OF DEMOLITION AND AREA OF DEMOLITION.

1 FIRE ALARM SYSTEM RISER DIAGRAM
N.T.S.

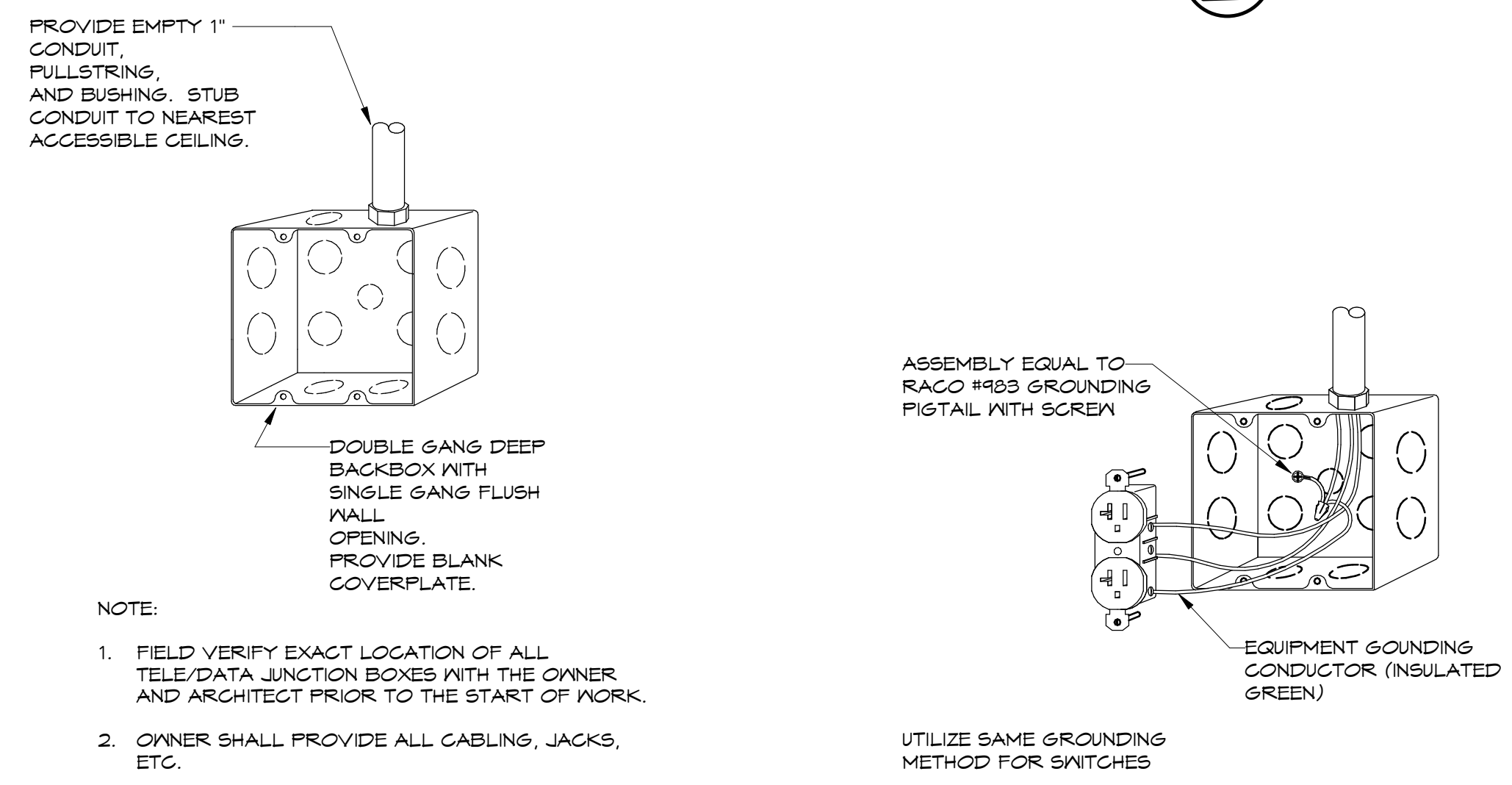


- NOTE:**
1. INSTALL WIRING TO ALL DUCT DETECTORS. REFER TO SPECIAL SYSTEMS PLANS.
 2. COORDINATE WITH THE MECHANICAL DRAWINGS.
 3. COORDINATE WITH THE LOCAL "A.H.J." PRIOR TO BIDDING THIS PROJECT.
 4. FIRE ALARM CONTRACTOR TO MODIFY AS NECESSARY FOR SYSTEM PROVIDED.
 5. FIRE ALARM CONTRACTOR TO PROVIDE DETECTION AND RELEASE OF PREACTING FIRE SUPPRESSION SYSTEM. COORDINATE WITH FIRE SUPPRESSION CONTRACTOR TO PROVIDE ALL COMPONENTS FOR A COMPLETE AND WORKING SYSTEM.



- MOUNTING HEIGHT KEYED NOTE:**
- 1 4'-0" MAXIMUM TO TOP OF DEVICE UNLESS LOCATED ABOVE OBSTRUCTION (OR NOTED OTHERWISE) THEN MAXIMUM 4" ABOVE THE OBSTRUCTION. COORDINATE WITH MILLWORK.
 - 2 MOUNT NEAR RETURN AIR GRILLE.
 - 3 THE HEIGHT OF THE MANUAL FIRE ALARM BOXES SHALL BE A MINIMUM OF 42" AND A MAXIMUM OF 48" MEASURED VERTICALLY FROM THE FLOOR LEVEL TO THE ACTIVATING HANDLE OR LEVER OF THE BOX.
 - 4 ABOVE COUNTER MOUNTED DEVICES. INSTALL DEVICES ABOVE BACKSPASH AND COORDINATED WITH MILLWORK. DATA/TELEPHONE DEVICES SHOWN ADJACENT TO ABOVE COUNTER RECEPTACLES TO BE TO BE MOUNTED AT SAME HEIGHT.
- NOTE:**
1. ALL DEVICES SHOWN MAY NOT BE USED.
 2. DETAIL INDICATES TYPICAL MOUNTING HEIGHTS ONLY.
 3. DEVICES SHALL BE INSTALLED FLUSH, SQUARE AND TRUE.
 4. ALL DEVICES INSTALLED AT A SINGLE LOCATION SHALL BE ALIGNED U.N.O.
 5. COORDINATE ALL MOUNTING HEIGHTS WITH ARCHITECT.

2 MOUNTING HEIGHT DETAIL
N.T.S.



3 TEL DATA DETAIL
N.T.S.

4 DEVICE/JUNCTION BOX GROUNDING DETAIL
1/8" = 1'-0"



SC JOHNSON AR - STE 300 RENOVATION

903 N. 47TH ST. STE 300
ROGERS, AR 72756



01/07/2026

DELTA	ISSUE	DESCRIPTION	DATE
8	11	ISSUE FOR CONSTRUCTION	03/23/2026
6	9	RFI #7	03/09/2026
3	6	RFI #11	02/06/2026
2	5	ISSUE FOR BID & PERMIT	01/07/2026
	2	90% CD REVIEW	11/11/2025



NEW YORK
100 BROADWAY 12th FLOOR
NEW YORK CITY, NY 10005
TEL 212-682-6909

©2025 INTERIOR ARCHITECTS, P.C. A NEW YORK PROFESSIONAL SERVICES CORPORATION. ALL DRAWINGS AND WRITTEN MATERIALS HEREIN CONSTITUTE THE ORIGINAL AND UNPUBLISHED WORK OF THE ARCHITECT AND THE SAME MAY NOT BE REPRODUCED, USED, OR DISCLOSED WITHOUT THE WRITTEN CONSENT OF THE ARCHITECT.

Owner Approval
055CJIS.0037.000 1/8" = 1'-0"
Job No. Scale

HSA Engineering
501 / 327 / 5757 office
515 Locust Avenue
Conway, Arkansas 72034
HSAConsultants.com

ELECTRICAL LEGEND, NOTES & DETAILS

E1.1

**SC JOHNSON AR - STE 300
RENOVATION**

903 N. 47TH ST. STE 300
ROGERS, AR 72756



01/07/2026

DELTA	ISSUE	DESCRIPTION	DATE
8	11	ISSUE FOR CONSTRUCTION	03/23/2026
6	9	RFI #7	03/09/2026
3	6	RFI #11	02/06/2026
2	5	ISSUE FOR BID & PERMIT	01/07/2026
	2	90% CD REVIEW	11/11/2025

DELTA ISSUE DESCRIPTION DATE



NEW YORK
100 BROADWAY 12th FLOOR
NEW YORK CITY, NY 10005
TEL 212-682-6909

©2025 INTERIOR ARCHITECTS, P.C. A NEW YORK PROFESSIONAL SERVICES CORPORATION.
ALL DRAWINGS AND WRITTEN MATERIALS HEREIN CONSTITUTE THE ORIGINAL AND UNPUBLISHED WORK
OF THE ARCHITECT, AND THE SAME MAY NOT BE DUPLICATED, USED, OR DISCLOSED WITHOUT THE
WRITTEN CONSENT OF THE ARCHITECT.

Owner Approval _____
05SCJIS.0037.000 1/8" = 1'-0"
Job No. _____ Scale _____

LIGHTING PLAN

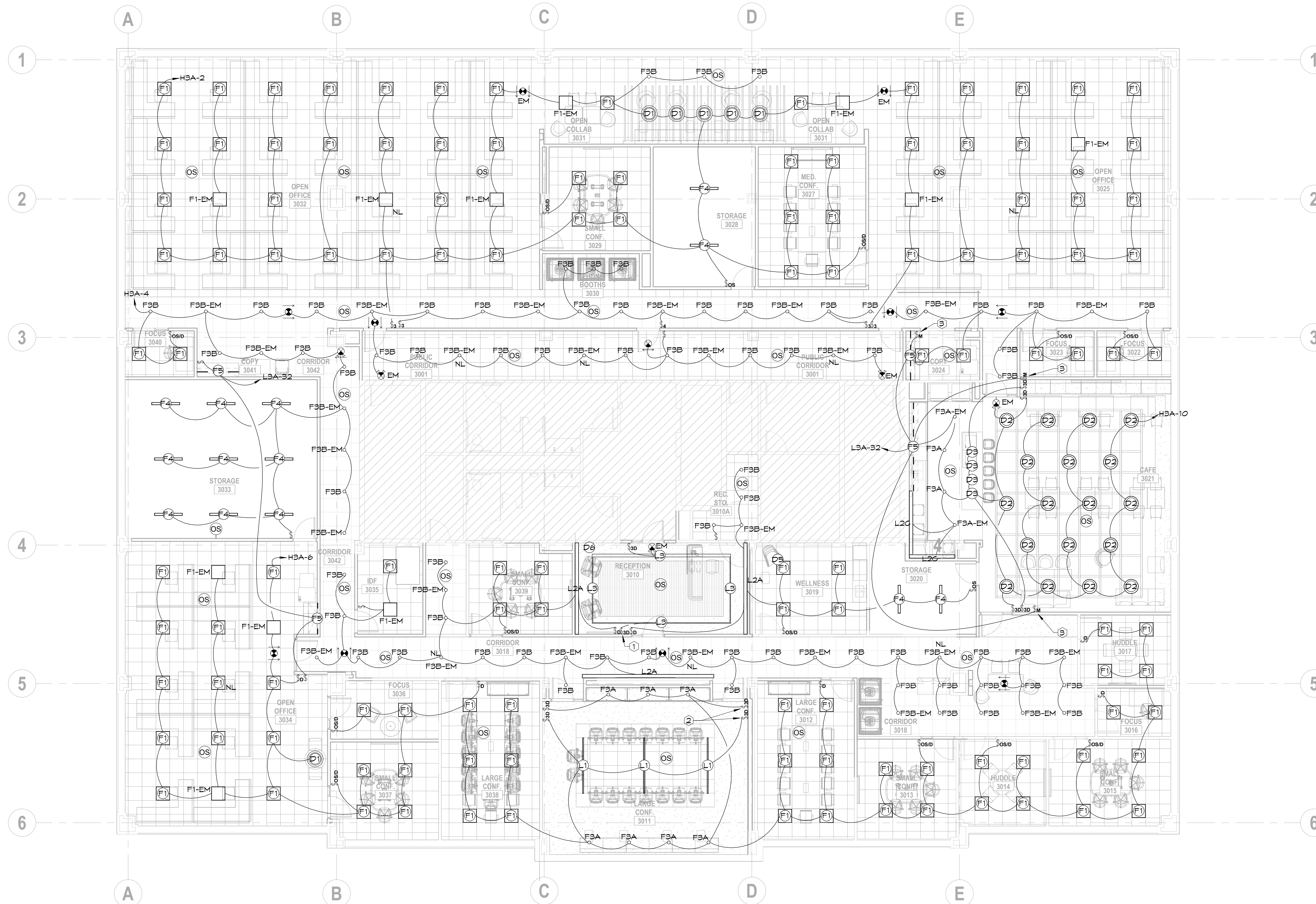
E2.1

GENERAL LIGHTING NOTES

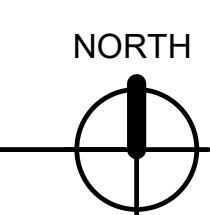
1. REFER TO ARCHITECTURAL DRAWING #AN-5.0 FOR LATEST LIGHTING FIXTURE SCHEDULE.
2. REFER TO ARCHITECTURAL DRAWING #A-3.0 FOR LATEST REFLECTED CEILING PLAN.
3. FIXTURES DENTOEED WITH NL (NIGHT LIGHTING) SHALL BE WIRED AHEAD OF LOCAL CONTROLS
4. ALL UNDERCABINET LIGHTING SHALL BE FURNISHED WITHOUT ROCKER SWITCH AND SHALL BE CONTROLLED WITH LOCAL SWITCH

KEYED LIGHTING NOTES

- 1 PROVIDE SINGLE POLE PRESET WALLBOX SLIDE DIMMER. ELECTRICAL CONTRACTOR SHALL FURNISH AND INSTALL DIMMER COMPATIBLE WITH THE ACTUAL FIXTURES USED. TYPICAL OF ALL.
- 2 PROVIDE SINGLE POLE THREE WAY PRESET WALLBOX SLIDE DIMMER. ELECTRICAL CONTRACTOR SHALL FURNISH AND INSTALL DIMMER COMPATIBLE WITH THE ACTUAL FIXTURES USED. TYPICAL OF ALL.
- 3 PROVIDE MOMENTARY CONTACT SWITCH FOR CONTROL OF MULTIPLE CIRCUITS AND VOLTAGES. PROVIDE QUANTITY OF RELAYS AS REQUIRED AND MOUNT CONCEALED ABOVE NEAREST LAY IN CEILING.



1 LIGHTING PLAN
1/8" = 1'-0"



HSA Engineering
501 / 327 / 5757 office
515 Locust Avenue
Conway, Arkansas 72034
HSAConsultants.com

HSA JOB #25-178

**SC JOHNSON AR - STE 300
RENOVATION**

**903 N. 47TH ST. STE 300
ROGERS, AR 72756**



01/07/2026

8	11	ISSUE FOR CONSTRUCTION	03/23/2026
6	9	RFI #7	03/09/2026
3	6	RFI #11	02/06/2026
2	5	ISSUE FOR BID & PERMIT	01/07/2026
	2	90% CD REVIEW	11/11/2025

DELTA ISSUE DESCRIPTION DATE



NEW YORK
100 BROADWAY 12th FLOOR
NEW YORK CITY, NY 10005
TEL 212-682-6909

©2025 INTERIOR ARCHITECTS, P.C., A NEW YORK PROFESSIONAL SERVICES CORPORATION.
ALL DRAWINGS AND WRITTEN MATERIALS HEREIN CONSTITUTE THE ORIGINAL AND UNPUBLISHED WORK
OF THE ARCHITECT, AND THE SAME MAY NOT BE REPRODUCED, USED, OR DISCLOSED WITHOUT THE
WRITTEN CONSENT OF THE ARCHITECT.

Owner Approval
05SCJIS.0037.000 1/8" = 1'-0"
Job No. Scale

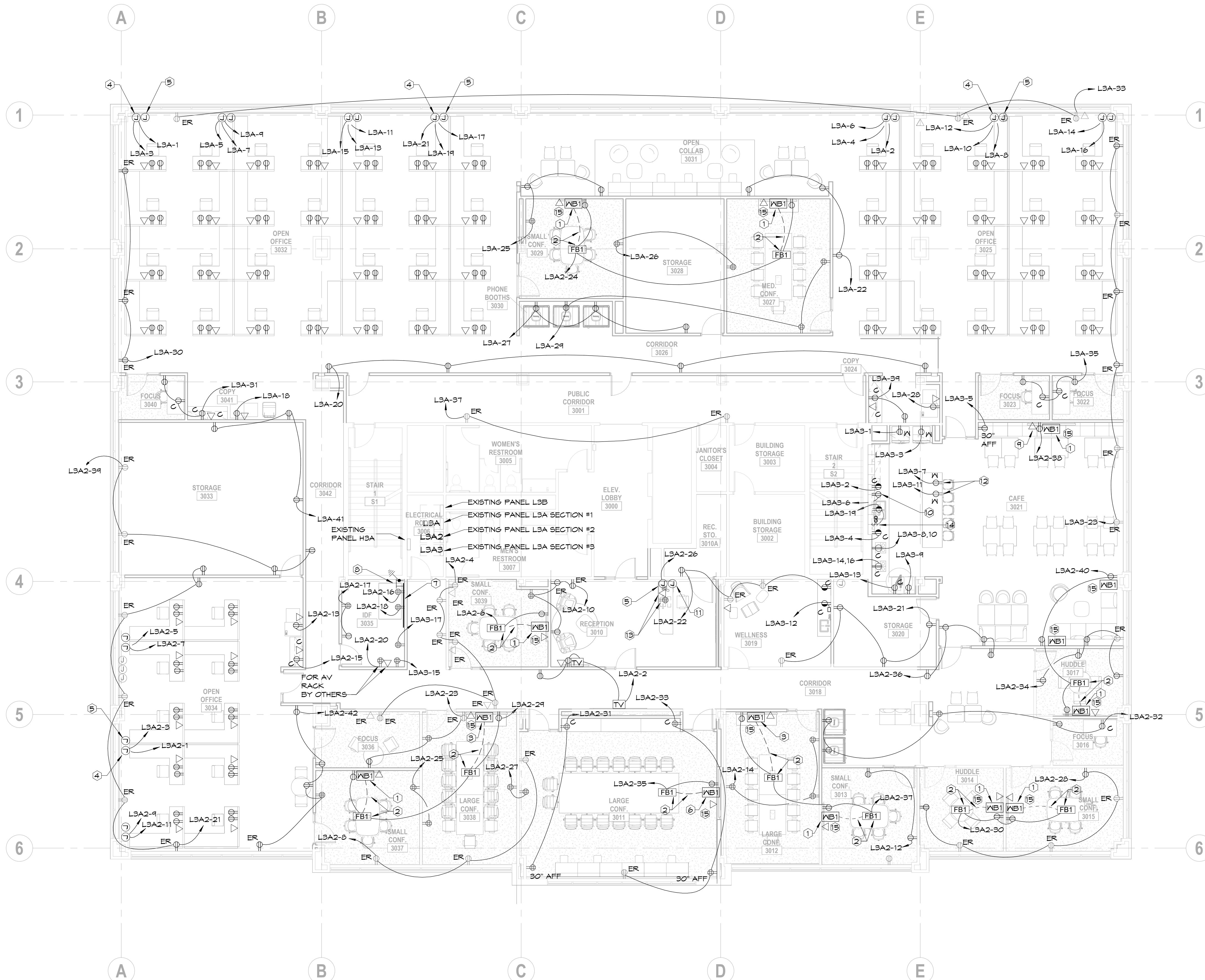
**POWER PLAN
E2.2**

GENERAL POWER NOTES

- REFER TO THE AV DRAWINGS FOR ALL INFRASTRUCTURE REQUIREMENTS, INCLUDING JUNCTION BOX SIZES, CONDUIT SIZES, MOUNTING HEIGHTS, ETC. AT THE MB# DETAILS/ELEVATIONS, ETC. POWER CONDUITS ARE NOT SHOWN. ALL POWER CONDUITS SHALL BE BY THE ELECTRICAL CONTRACTORS AS REQUIRED.
- REFER TO THE ARCHITECTURAL DRAWINGS FOR ALL INFRASTRUCTURE REQUIREMENTS, INCLUDING DEVICE LOCATIONS, SIZES, MOUNTING HEIGHTS, ETC.
- REFER TO ARCHITECTURAL DRAWINGS FOR ALL FULL HEIGHT PARTITIONS THAT GO TO THE DECK. PROVIDE SLEEVES AT THESE LOCATIONS.
- FLOOR MOUNTED CONNECTRAC SURFACE RACEWAY SYSTEM FURNISHED BY AV INSTALLER. POWER CONDUITS TO UNDER THE TABLE SHALL BE ROUTED IN THIS SURFACE RACEWAYS, TYPICAL.
- REFER TO DRAWING AN5.0 FOR A PARTIAL RESPONSIBILITY MATRIX.
- AT ALL DEVICES DENOTED WITH 'ER' (EXISTING TO REMAIN) REPLACE DEVICE, REUSE CONDUIT AND WIRING WHERE POSSIBLE. PROVIDE NEW AS REQUIRED, TYPICAL OF ALL.

KEYED POWER NOTES

- REFER TO THE AV000, AV001 AND AV401.0 DRAWINGS FOR ALL INFRASTRUCTURE REQUIREMENTS INCLUDING, JUNCTION BOX SIZES, LOW VOLTAGE CONDUITS, ETC. PROVIDE AN ADDITIONAL CONCEALED IN WALL CONDUIT FOR RECEPTACLE CIRCUITS FROM 'MB-1' JUNCTION BOXES UP TO ABOVE FINISHED CEILING AND DOWN TO THE TRANSITION FROM CONCEALED CONDUIT TO CONNECTRAC SURFACE RACEWAY SYSTEM. FLOOR MOUNTED CONNECTRAC FURNISHED BY AV INSTALLER, TYPICAL.
- SURFACE FLOOR MOUNTED CONNECTRAC FURNISHED AND INSTALLED BY THE AV INSTALLER. ROUTE POWER WIRING IN THE TRACK CONNECTOR.
- REFER TO THE AV000, AV001 AND AV401.0 DRAWINGS FOR ALL INFRASTRUCTURE REQUIREMENTS INCLUDING, JUNCTION BOX SIZES, LOW VOLTAGE CONDUITS, ETC. PROVIDE AN ADDITIONAL CONCEALED IN WALL CONDUIT FOR RECEPTACLE CIRCUITS FROM 'MB-1' JUNCTION BOXES UP TO ABOVE FINISHED CEILING AND DOWN TO THE TRANSITION FROM CONCEALED CONDUIT TO CONNECTRAC SURFACE RACEWAY SYSTEM. FLOOR MOUNTED CONNECTRAC, FURNISHED BY AV INSTALLER, TYPICAL.
- PROVIDE FLUSH WALL MOUNTED DOUBLE GANG DEEP BACKBOX WITH A REMOVABLE COVER WITH A 2" GROMMET OPENING FOR LOW VOLTAGE CABLING. PROVIDE EMPTY 2" C. WITH FULLSTRINGS STUBBED ABOVE NEAREST LAY IN CEILING, TYPICAL.
- PROVIDE FLUSH WALL MOUNTED JUNCTION BOX AND HARDWARE CONNECTION TO FURNITURE BASE FOR POWER, TYPICAL.
- REFER TO THE AV000, AV001 AND AV412.0 DRAWINGS FOR ALL INFRASTRUCTURE REQUIREMENTS INCLUDING, JUNCTION BOX SIZES, LOW VOLTAGE CONDUITS, ETC. PROVIDE AN ADDITIONAL CONCEALED IN WALL CONDUIT FOR RECEPTACLE CIRCUITS FROM 'MB-1' JUNCTION BOXES UP TO ABOVE FINISHED CEILING AND DOWN TO THE TRANSITION FROM CONCEALED CONDUIT TO CONNECTRAC SURFACE RACEWAY SYSTEM. FLOOR MOUNTED CONNECTRAC, FURNISHED BY AV INSTALLER, TYPICAL.
- PROVIDE TWO (2) 3/4" T X 3/4" X 4'-0" FIRE RATED PLYWOOD BACKBOARD. PAINT TO MATCH ADJACENT SURFACE. MOUNT BOTTOM OF BACKBOARD 20" AFF.
- PROVIDE 1/4" X 4" X 12" GROUNDING BAR. PROVIDE 1 #1/0 TO BUILDING GROUNDING SYSTEM.
- PROVIDE EMPTY 1" C. TO MB1.
- FOR DISHWASHER. MOUNT IN ADJACENT LOWER CABINET FOR ACCESS.
- PROVIDE FLUSH WALL MOUNTED DOUBLE GANG DEEP BACKBOX WITH A REMOVABLE COVER WITH A 1" GROMMET OPENING FOR LOW VOLTAGE CABLING. PROVIDE EMPTY 1" C. WITH FULLSTRINGS STUBBED ABOVE NEAREST LAY IN CEILING. REFER TO ARCHITECTURAL DRAWINGS FOR ADDITIONAL INFORMATION.
- STUB CONDUIT UP/CONCEALED IN MILLWORK. FLUSH MOUNT RECEPTACLES IN THE MILLWORK. COORDINATE WITH THE ARCHITECT. ROUTE CONDUIT IN THE CEILING OF THE FLOOR BELOW. COORDINATE ACCESS TO THE LOWER FLOOR TENANT WITH THE LANDLORD SEVEN BUSINESS DAYS PRIOR TO NEEDING ACCESS.
- PROVIDE DEVICES MOUNTED FLUSH IN THE MILLWORK. COORDINATE WITH THE ARCHITECT.
- MOUNT ON/OFF SWITCH ABOVE FINISHED COUNTER.
- COORDINATE HEIGHT OF ALL DEVICES ON WALL WITH AV DRAWINGS.



GENERAL MECHANICAL POWER NOTES

1. ALL HVAC EQUIPMENT IS EXISTING TO REMAIN, TYPICAL OF ALL UNLESS OTHERWISE NOTED.

KEYED MECHANICAL POWER NOTES

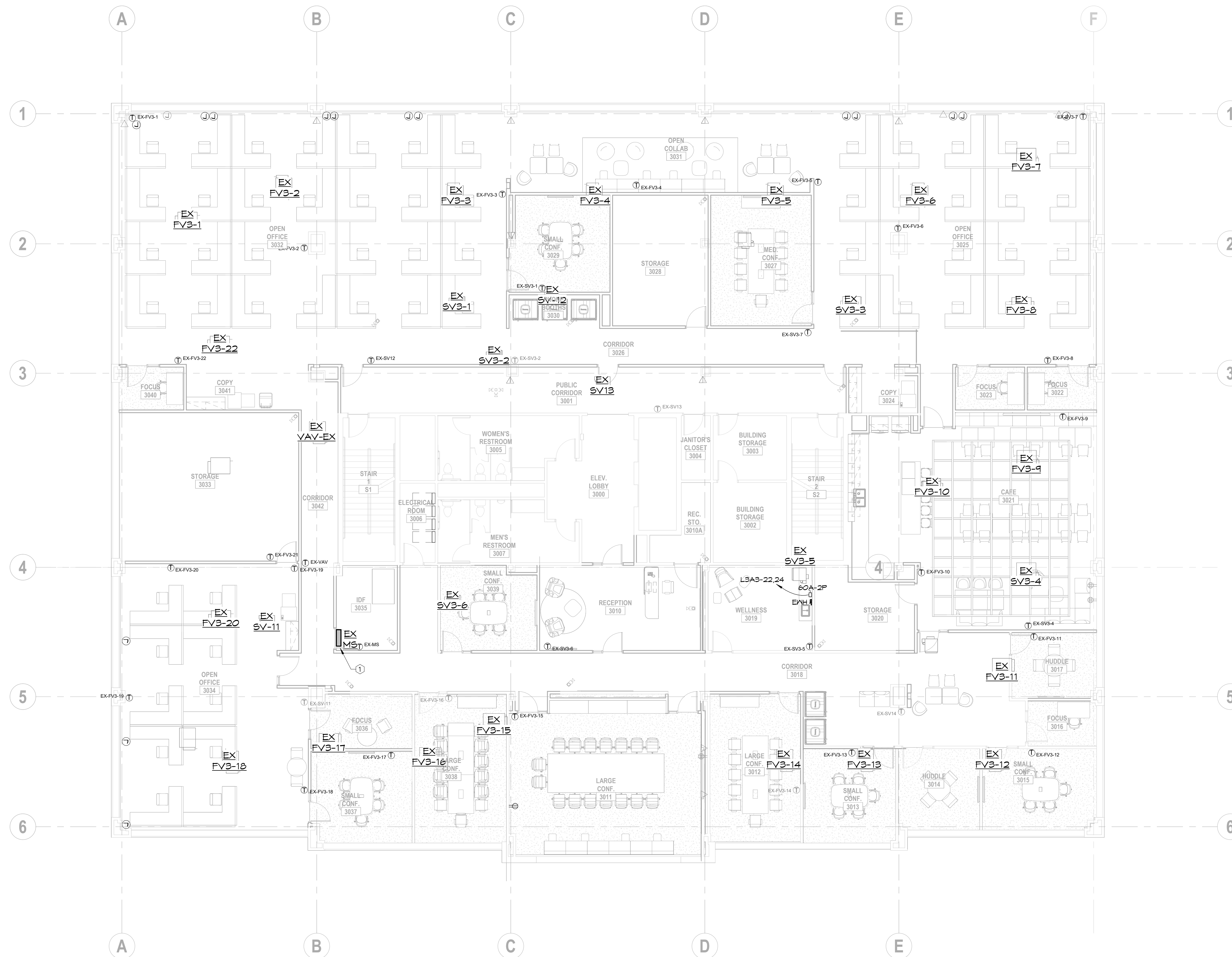
① NEW LOCATION FOR RELOCATED MINI SPLIT, INTERCEPT AND EXTEND EXISTING CONDUITS TO NEW LOCATION. REFER TO THE HVAC DRAWING FOR EXISTING LOCATION.

**SC JOHNSON AR - STE 300
RENOVATION**

903 N. 47TH ST. STE 300
ROGERS, AR 72756



01/07/2026



DELTA	ISSUE	DESCRIPTION	DATE
8	11	ISSUE FOR CONSTRUCTION	03/23/2026
6	9	RFI #7	03/09/2026
3	6	RFI #11	02/06/2026
2	5	ISSUE FOR BID & PERMIT	01/07/2026
	2	90% CD REVIEW	11/11/2025

DELTA ISSUE DESCRIPTION DATE

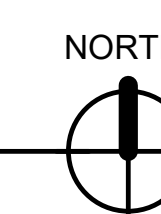


NEW YORK
100 BROADWAY 12th FLOOR
NEW YORK CITY, NY 10005
TEL 212-682-6909

©2025 INTERIOR ARCHITECTS, P.C. A NEW YORK PROFESSIONAL SERVICES CORPORATION.
ALL DRAWINGS AND WRITTEN MATERIALS HEREIN CONSTITUTE THE ORIGINAL AND UNPUBLISHED WORK
OF THE ARCHITECT, AND THE SAME MAY NOT BE DUPLICATED, USED, OR DISCLOSED WITHOUT THE
WRITTEN CONSENT OF THE ARCHITECT.

Owner Approval _____
05SCJIS.0037.000 1/8" = 1'-0"
Job No. _____ Scale _____

1 MECHANICAL POWER PLAN
1/8" = 1'-0"



HSA Engineering
501 / 327 / 5757 office
515 Locust Avenue
Conway, Arkansas 72034
HSAConsultants.com

**MECHANICAL POWER
PLAN
E2.3**

HSA JOB #25-170

**SC JOHNSON AR - STE 300
RENOVATION**

**903 N. 47TH ST. STE 300
ROGERS, AR 72756**



01/07/2026

8	11	ISSUE FOR CONSTRUCTION	03/23/2026
6	9	RFI #7	03/09/2026
3	6	RFI #11	02/06/2026
2	5	ISSUE FOR BID & PERMIT	01/07/2026
2	5	90% CD REVIEW	11/11/2025

DELTA ISSUE DESCRIPTION DATE



NEW YORK
100 BROADWAY 12th FLOOR
NEW YORK CITY, NY 10005
TEL 212-682-6909

©2025 INTERIOR ARCHITECTS, P.C., A NEW YORK PROFESSIONAL SERVICES CORPORATION.
ALL DRAWINGS AND WRITTEN MATERIALS HEREIN CONSTITUTE THE ORIGINAL AND UNPUBLISHED WORK
OF THE ARCHITECT, AND THE SAME MAY NOT BE DUPLICATED, USED, OR DISCLOSED WITHOUT THE
WRITTEN CONSENT OF THE ARCHITECT.

Owner Approval _____
05SCJS.0037.000 1/8" = 1'-0"
Job No. Scale

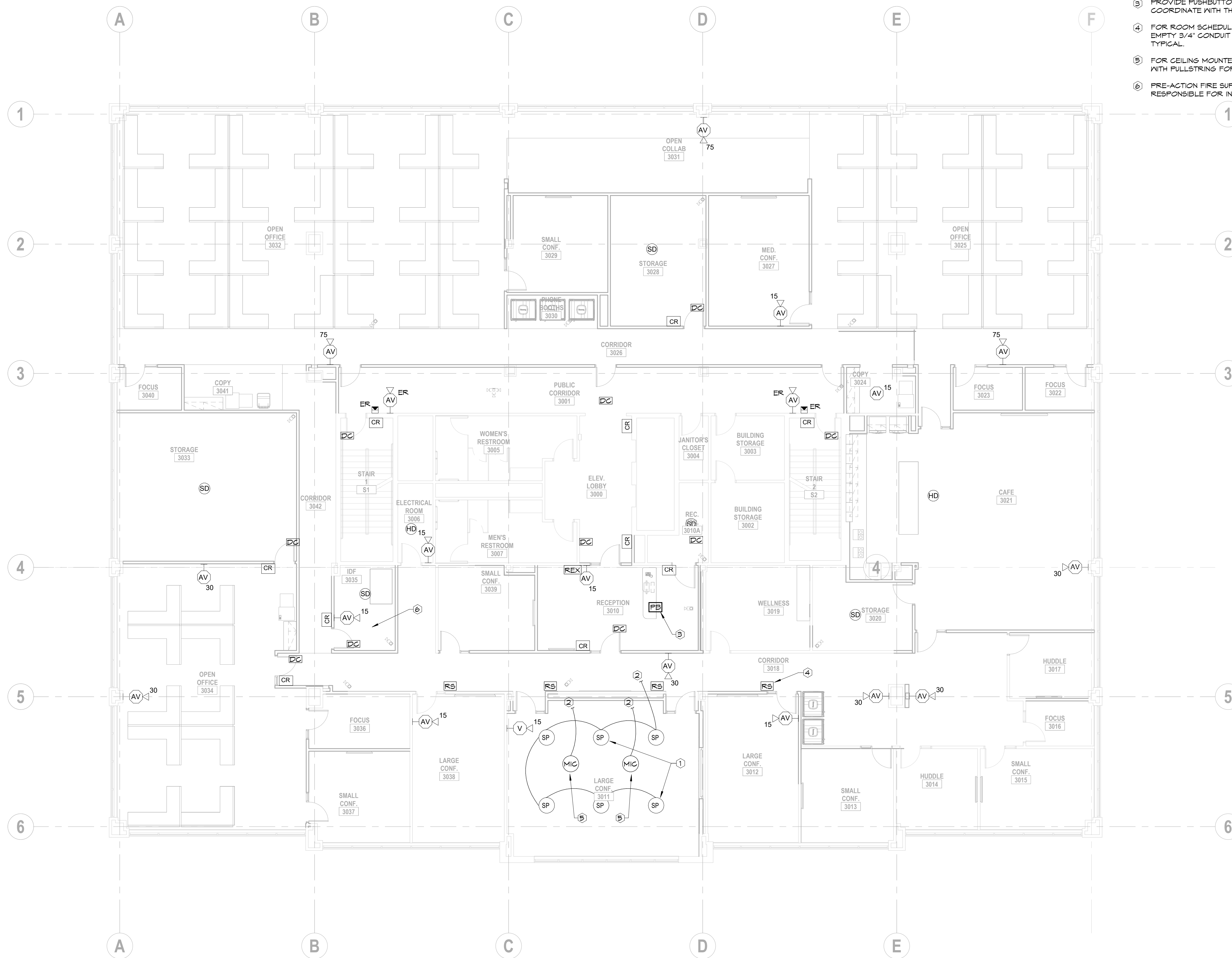
**SPECIAL SYSTEMS PLAN
E2.4**

GENERAL SPECIAL SYSTEMS NOTES

1. REFER TO THE AV DRAWINGS FOR ALL INFRASTRUCTURE REQUIREMENTS, INCLUDING JUNCTION BOX SIZES, CONDUIT SIZES, MOUNTING HEIGHTS, ETC. AT THE NFB (WALL BOX) DETAILS/ELEVATIONS, ETC. POWER CONDUITS ARE NOT SHOWN. ALL POWER CONDUITS SHALL BE BY THE ELECTRICAL CONTRACTOR AS REQUIRED. MINIMUM 3/4" C.
2. REFER TO THE ARCHITECTURAL DRAWINGS FOR ALL INFRASTRUCTURE REQUIREMENTS, INCLUDING ALL DEVICE LOCATIONS, SIZES, MOUNTING HEIGHTS, ETC.
3. REFER TO ARCHITECTURAL DRAWINGS FOR ALL FULL HEIGHT PARTITIONS THAT GO TO THE DECK. PROVIDE SLEEVES AT THESE LOCATIONS.
4. FLOOR MOUNTED CONNEXTRAC SURFACE RACEWAY SYSTEM FURNISHED BY AV INSTALLER. POWER CONDUITS TO UNDER THE TABLE SHALL BE ROUTED IN THIS SURFACE RACEWAYS. TYPICAL.
5. REFER TO DRAWING AN5.0 FOR A PARTIAL RESPONSIBILITY MATRIX.
6. ELECTRICAL CONTRACTOR SHALL CONTRACT WITH THE LANDLORD'S PREFERRED FIRE ALARM VENDOR. ALL NEW FIRE ALARM DEVICES SHALL CONNECT TO THE EXISTING LANDLORD FIRE ALARM SYSTEM. VERIFY IN THE FIELD MANUFACTURER AND LOCATION OF CONTROL PANEL.

KEYED SPECIAL SYSTEMS NOTES

- 1 APPROXIMATE LOCATION OF SPEAKERS FURNISHED AND INSTALLED BY THE AV INSTALLER. ELECTRICAL CONTRACTOR SHALL PROVIDE EMPTY CONDUIT WITH PULLSTRING FROM SPEAKER TO SPEAKER. COORDINATE CONDUIT SIZE WITH THE AV INSTALLER. REFER TO AV412.1. TYPICAL.
- 2 PROVIDE EMPTY CONDUIT WITH PULLSTRING AND ROUTE CONDUIT BACK TO THE AV RACK AT IDF 3035. COORDINATE CONDUIT SIZE WITH THE AV INSTALLER.
- 3 PROVIDE PUSHBUTTON FOR DOOR RELEASE. PROVIDE EMPTY CONDUIT TO DOOR TO BE CONTROLLED. COORDINATE WITH THE ARCHITECT AND OWNER FOR DOORS TO BE CONTROLLED.
- 4 FOR ROOM SCHEDULER, PSE, FURNISHED BY OTHERS. ELECTRICAL CONTRACTOR SHALL PROVIDE EMPTY 3/4" CONDUIT WITH PULLSTRING TO NEAREST ACCESSIBLE LAY-IN CEILING. REFER TO AV412.2. TYPICAL.
- 5 FOR CEILING MOUNTED MICROPHONE. ELECTRICAL CONTRACTOR SHALL PROVIDE EMPTY 3/4" CONDUIT WITH PULLSTRING FOR EACH, TO NEAREST ACCESSIBLE LAY-IN CEILING. REFER TO AV412.1. TYPICAL.
- 6 PRE-ACTION FIRE SUPPRESSION SYSTEM TO BE INSTALLED IN IDF ROOM. ELECTRICAL CONTRACTOR IS RESPONSIBLE FOR INTERCONNECTION WITH THE EXISTING FIRE ALARM SYSTEM.



1 SPECIAL SYSTEMS PLAN
1/8" = 1'-0"



HSA Engineering
501 / 327 / 5757 office
515 Locust Avenue
Conway, Arkansas 72034
HSAConsultants.com

HSA JOB #25-178

**SC JOHNSON AR - STE 300
RENOVATION**

903 N. 47TH ST. STE 300
ROGERS, AR 72756



01/07/2026

DELTA	ISSUE	DESCRIPTION	DATE
8	11	ISSUE FOR CONSTRUCTION	03/23/2026
6	9	RFI #7	03/09/2026
3	6	RFI #11	02/06/2026
2	5	ISSUE FOR BID & PERMIT	01/07/2026
	2	90% CD REVIEW	11/11/2025

DELTA ISSUE DESCRIPTION DATE



NEW YORK
100 BROADWAY 12th FLOOR
NEW YORK CITY, NY 10005
TEL 212-682-6909

©2025 INTERIOR ARCHITECTS, P.C., A NEW YORK PROFESSIONAL SERVICES CORPORATION.
ALL DRAWINGS AND WRITTEN MATERIALS HEREIN CONSTITUTE THE ORIGINAL AND UNPUBLISHED WORK
OF THE ARCHITECT AND THE SAME MAY NOT BE DUPLICATED, USED, OR DISCLOSED WITHOUT THE
WRITTEN CONSENT OF THE ARCHITECT.

Owner Approval _____
05SCJS.0037.000 1/8" = 1'-0"
Job No. _____ Scale _____

**ELECTRICAL DEMOLITION
PLAN**

ED2.1

DEMOLITION LEGEND

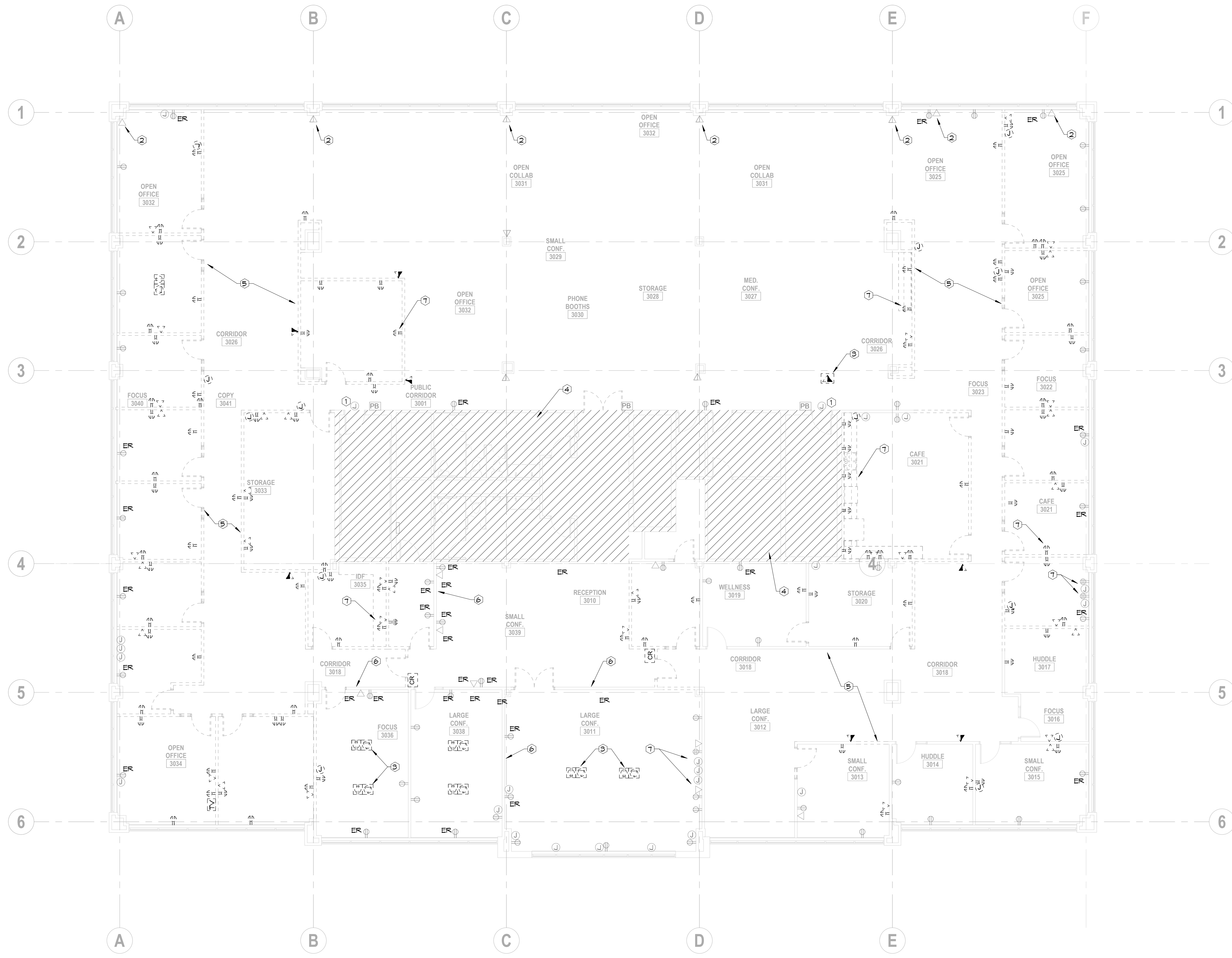
- ④ ELECTRICAL DEVICES THAT ARE GRAYED OUT ARE EXISTING. REMOVE DEVICE AND WIRING, REUSE CONDUIT WHENEVER POSSIBLE.
- ⑤ ELECTRICAL DEVICES THAT ARE DASHED ARE TO BE DEMOLISHED. DISCONNECT AND REMOVE DEVICE, CONDUIT, WIRE ETC. BACK TO SOURCE OR NEXT DEVICE TO REMAIN. FIELD VERIFY ALL EXISTING CONDITIONS.

ELECTRICAL DEMOLITION GENERAL NOTES

1. ALL EXISTING RECEPTACLES, DATA OUTLETS, FIRE ALARM, ACCESS CONTROL, ETC. DEVICES SHOWN ARE FROM A CURSORY REVIEW OF THE EXISTING DRAWINGS. ELECTRICAL CONTRACTOR SHALL FIELD VERIFY EXTENT OF DEMOLITION PRIOR TO SUBMITTING BID.
2. FOR ALL DEVICES IN WALLS/MILLWORK BEING DEMOLISHED: DISCONNECT AND REMOVE CONDUIT AND WIRE BACK TO SOURCE OR NEXT DEVICE TO REMAIN.
3. REMOVE ALL DEVICES IN GELINGS THAT ARE TO BE DEMOLISHED: DISCONNECT AND REMOVE CONDUIT AND WIRE BACK TO SOURCE. LABEL BREAKER AS SPARE.
4. ALL EXISTING SURFACE MOUNTED RACEWAY AND DEVICES ARE TO BE REMOVED IN ALL SPACES.
5. ALL EXISTING LIGHT FIXTURES AND LIGHTING CONTROL DEVICES OUTSIDE THE LANDLORD AREAS SHALL BE REMOVED. DISPOSE OF LIGHTING CONTROLS. REMOVED LIGHT FIXTURES SHALL BE OFFERED TO THE LANDLORD FOR ATTIC STOCK. IF LANDLORD DOES NOT WANT THE LIGHTS, DISPOSE OFF SITE.
6. FOR ALL UNUSED CIRCUITS, REMOVE CONDUIT AND WIRE BACK TO SOURCE. LABEL CIRCUIT BREAKER AS SPARE FOR REUSE.
7. REFER TO ARCHITECTURAL DRAWINGS FOR AREAS AND EXTENT OF DEMOLITION.
8. DEVICES SHOWN AS BOLD OR DASHED ARE TO BE REMOVED AND DISPOSED OF UNLESS OTHERWISE NOTED.
9. FIELD VERIFY ALL EXISTING CONDITIONS.
10. REMOVE POWER TO ALL EXISTING EQUIPMENT TO BE DEMOLISHED. COORDINATE WITH ALL TRADES.
11. REMOVE ALL EXISTING DATA CABLING THROUGHOUT THE AREA OF WORK.
12. REMOVE ALL EXISTING ACCESS CONTROL DEVICES AND WIRING OUTSIDE THE LANDLORD AREAS AND DISPOSE OF PER THE ARCHITECT'S DIRECTION. MARK EXISTING LOCATIONS ON AS BUILT DRAWINGS. INSTALL NEW DEVICES AT SAME LOCATIONS AS NOTED AND PROVIDE NEW WIRING AS REQUIRED. FIELD VERIFY ALL EXISTING LOCATIONS.
13. REMOVE ALL EXISTING INTRUSION DETECTION DEVICES AND WIRING AND DISPOSE OF PER THE ARCHITECT'S DIRECTION. MARK EXISTING LOCATIONS ON AS BUILT DRAWINGS. FIELD VERIFY ALL EXISTING LOCATIONS. PROVIDE NEW DEVICES AND NEW WIRING.

KEYED ELECTRICAL DEMOLITION NOTES

- ① ELECTROMAGNETIC LOCK EXISTING TO REMAIN.
- ② REMOVE EXISTING CABLING AND PROVIDE BLANK COVERPLATE.
- ③ REMOVE EXISTING THROUGH FLOOR FITTINGS FLOOR BOXES. FILL OPENING. TYPICAL OF ALL, UNLESS OTHERWISE NOTED.
- ④ EXISTING BASE BUILDING AREAS TO REMAIN.
- ⑤ EXISTING PARTITION TO BE REMOVED. TYPICAL.
- ⑥ EXISTING PARTITION TO REMAIN. TYPICAL.
- ⑦ REMOVE ALL EXISTING DEVICES UNLESS DENOTED AS "ER". TYPICAL OF ALL.



1 ELECTRICAL DEMOLITION PLAN
1/8" = 1'-0"



HSA Engineering
501 / 327 / 5757 office
515 Locust Avenue
Conway, Arkansas 72034
HSAConsultants.com

HSA JOB #25-178