

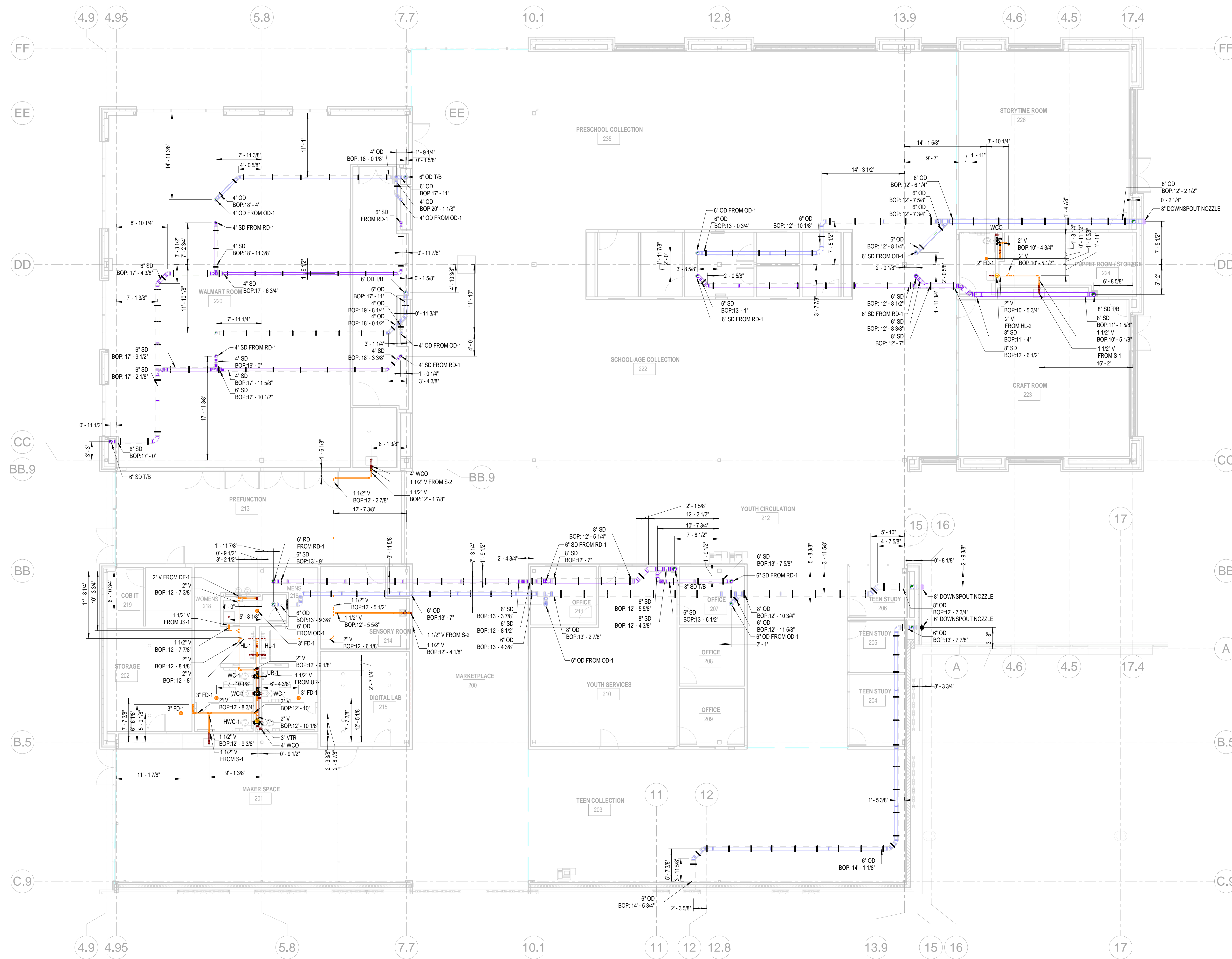
General Notes:-
1. All dimensions and elevations are in Feet and Inches.
2. All the measurements are taken from Level 1 @ 100' 0".

ABBREVIATIONS	
SS	SANITARY
SD	STORM DRAIN
OD	OVERFLOW STORM DRAIN
V	VENT
DCW	DOMESTIC COLD WATER
DHW	DOMESTIC HOT WATER
FIA	FROM ABOVE
T/A	TO ABOVE
T/B	TO BELOW
IE	INVERT ELEVATION
WCO	WALL CLEAN OUT
FD	FLOOR DRAIN
FHP	HOSS BIBB

INSULATION SCHEDULE		
SERVICE	PIPE SIZE	THICKNESS
DOMESTIC COLD WATER	UP TO 1 1/2"	1" THICKNESS
	ABOVE 1 1/2"	1 1/2" THICKNESS
DOMESTIC HOT WATER	UP TO 1 1/2"	1" THICKNESS
	ABOVE 1 1/2"	1 1/2" THICKNESS
DOMESTIC HOT WATER RETURN	UP TO 1 1/2"	1" THICKNESS
	ABOVE 1 1/2"	1 1/2" THICKNESS
STORM DRAIN ABOVE GROUND	ABOVE 1 1/2"	1 1/2" THICKNESS

FIXTURE SCHEDULE				
FIXTURE	WASTE	VENT	COLD WATER	HOT WATER
DRINKING FOUNTAIN (DF)	1-1/2"	1-1/2"	1/2"	
FLOOR DRAINS/SINKS (FDFS)	2"	1-1/2"		
HOSE BIBB (HB)			3/4"	
JANITOR'S SINK (JS)	3"	1-1/2"	1/2"	1/2"
SHOWER	2"	1-1/2"	1/2"	1/2"
LAVATORIES AND SINKS, COUNTER MOUNTED	1-1/2"	1-1/4"	1/2"	1/2"
LAVATORIES AND SINKS, WALL MOUNTED	1-1/2"	1-1/4"	1/2"	1/2"
URINAL FLUSH VALVE WALL MOUNTED (UR)	2"	1-1/4"	1"	
WATER CLOSET FLUSH VALVE WALL MOUNTED (WC)	3"	1-1/2"	1-1/4"	

PIPING LEGENDS & ABBREVIATION		
SERVICE	ABBREVIATION	SYMBOL
STORM DRAIN	SD	
OVERFLOW STORM DRAIN	OD	
VENT	V	



1 PLUMBING LEVEL-01 DWV SHOP DRAWING
1/8" = 1'-0"



LEGAL DISCLAIMER
THIS DOCUMENT IS THE PROPERTY OF COMFORT SYSTEMS USA. IT IS TO BE USED ONLY FOR THE PROJECT AND SITE SPECIFICALLY IDENTIFIED HEREIN. ANY REUSE OR MODIFICATION OF THIS DOCUMENT WITHOUT THE WRITTEN CONSENT OF COMFORT SYSTEMS USA IS STRICTLY PROHIBITED. THE USER SHALL BE RESPONSIBLE FOR OBTAINING ALL NECESSARY PERMITS AND APPROVALS FROM THE APPROPRIATE AGENCIES.

Bentonville Public Library Expansion
405 S Main Street, Bentonville, AR 72712

PLUMBING LEVEL-01 DWV SHOP DRAWING

Rev.	Date	Description	By
1	10-04-2023	ISSUED FOR REVIEW	
0	07-24-2023	ISSUED FOR REVIEW	

PROJECT NUMBER:	321031
PROJECT ISSUE DATE:	10-04-2023
DRAWN:	PIS
CHECKED:	PIS
CONTRACT REF:	REF
P102	