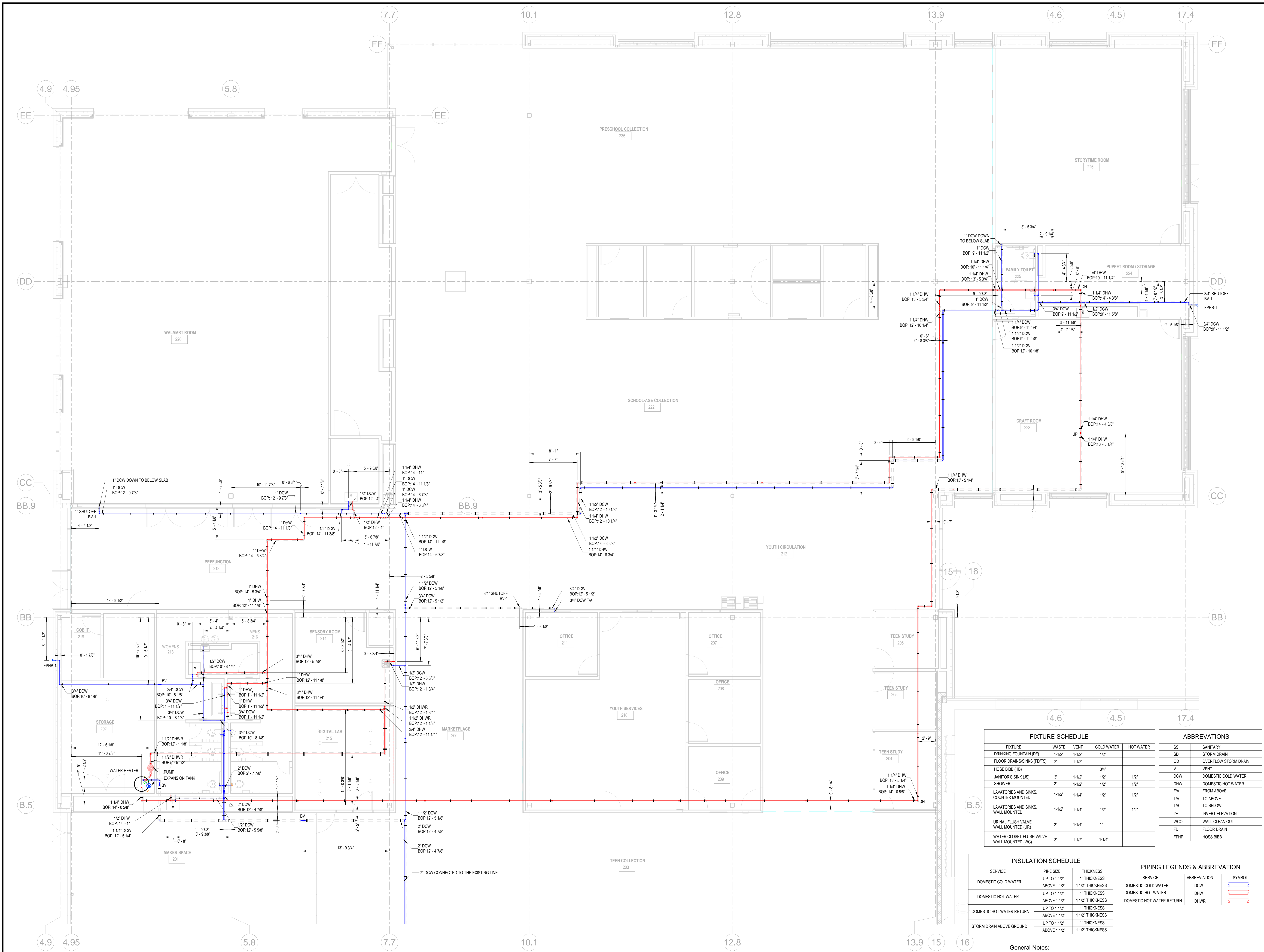


C:\Users\ps62277\Documents\BPLE_HPE_PLUMB_R22_sjringusGLD3.rvt



FIXTURE SCHEDULE				
FIXTURE	WASTE	VENT	COLD WATER	HOT WATER
DRINKING FOUNTAIN (DF)	1-1/2"	1-1/2"	1/2"	
FLOOR DRAINS/SINKS (FD/FS)	2"	1-1/2"		
HOSE BIBB (HB)			3/4"	
JANITOR'S SINK (JS)	3"	1-1/2"	1/2"	1/2"
SHOWER	2"	1-1/2"	1/2"	1/2"
LAVATORIES AND SINKS, COUNTER MOUNTED	1-1/2"	1-1/4"	1/2"	1/2"
LAVATORIES AND SINKS, WALL MOUNTED (LW)	1-1/2"	1-1/4"	1/2"	1/2"
URINAL FLUSH VALVE, WALL MOUNTED (UR)	2"	1-1/4"	1"	
WATER CLOSET FLUSH VALVE, WALL MOUNTED (WC)	3"	1-1/2"	1-1/4"	

ABBREVIATIONS	
SS	SANITARY
SD	STORM DRAIN
OD	OVERFLOW STORM DRAIN
V	VENT
DCW	DOMESTIC COLD WATER
DHW	DOMESTIC HOT WATER
FIA	FROM ABOVE
T/A	TO ABOVE
T/B	TO BELOW
IE	INVERT ELEVATION
WCO	WALL CLEAN OUT
FD	FLOOR DRAIN
FPHP	HOSE BIBB

INSULATION SCHEDULE		
SERVICE	PIPE SIZE	THICKNESS
DOMESTIC COLD WATER	UP TO 1 1/2"	1" THICKNESS
	ABOVE 1 1/2"	1 1/2" THICKNESS
DOMESTIC HOT WATER	UP TO 1 1/2"	1" THICKNESS
	ABOVE 1 1/2"	1 1/2" THICKNESS
DOMESTIC HOT WATER RETURN	UP TO 1 1/2"	1" THICKNESS
	ABOVE 1 1/2"	1 1/2" THICKNESS
STORM DRAIN ABOVE GROUND	UP TO 1 1/2"	1" THICKNESS
	ABOVE 1 1/2"	1 1/2" THICKNESS

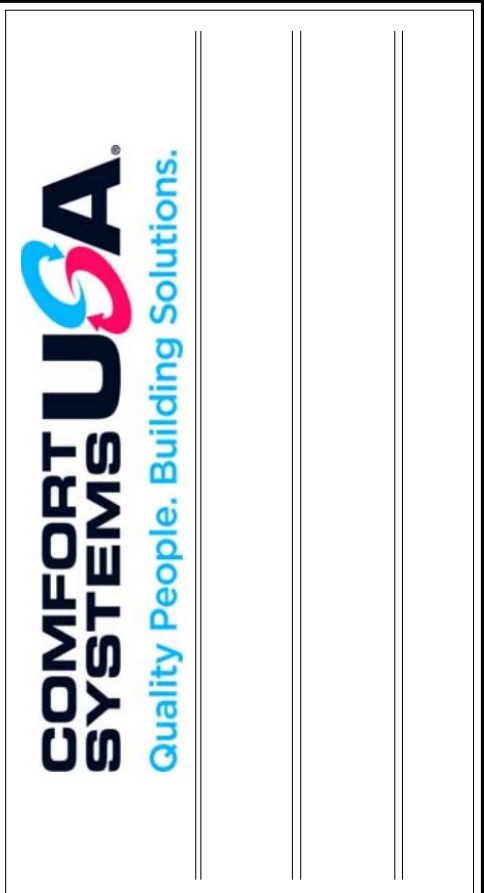
PIPING LEGENDS & ABBREVIATION		
SERVICE	ABBREVIATION	SYMBOL
DOMESTIC COLD WATER	DCW	
DOMESTIC HOT WATER	DHW	
DOMESTIC HOT WATER RETURN	DHWR	

General Notes:-
 1. All dimensions and elevations are in Feet and Inches.
 2. All the measurements are taken from Level 1 @100' 0".

1 PLUMBING LEVEL-01 DWS SHOP DRAWING
 3/16" = 1'-0"

P201

ISSUED FOR REVIEW



LEGAL DISCLAIMER
 THIS DOCUMENT CONTAINS ALL INFORMATION AND IS THE PROPERTY OF COMFORT SYSTEMS USA. IT IS TO BE USED ONLY FOR THE PROJECT AND SITE SPECIFICALLY IDENTIFIED HEREIN. NO PART OF THIS DOCUMENT SHALL BE REPRODUCED OR TRANSMITTED IN ANY FORM OR BY ANY MEANS, ELECTRONIC OR MECHANICAL, INCLUDING PHOTOCOPYING, RECORDING, OR BY ANY INFORMATION STORAGE AND RETRIEVAL SYSTEM, WITHOUT THE WRITTEN PERMISSION OF COMFORT SYSTEMS USA.

Bentonville Public Library Expansion
 405 S Main Street, Bentonville, AR 72712

Rev.	Date	Issued For Review	Description	By
0	07-24-2023			

PROJECT NUMBER: 321031
 PROJECT DATE: 07-24-2023
 DESIGNER: PIS
 CHECKED: PIS
 CONTRACT REF: REF
 P201

24-07-2023 12:27:22