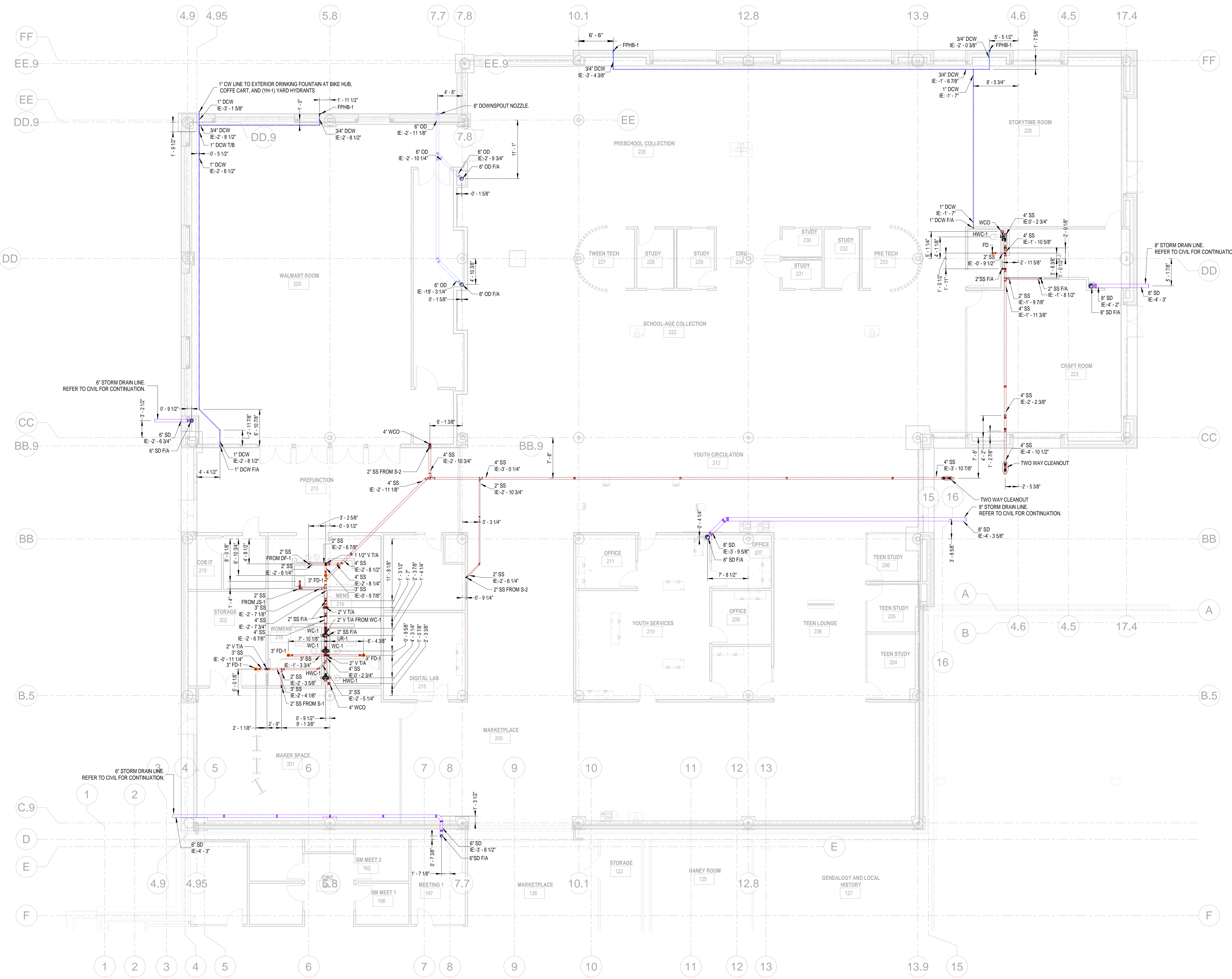


C:\Users\ps02277\Documents\BPLE_HPE_Plumb_R22.rptandby\2XGS.rvt



General Notes:-
 1. All dimensions and elevations are in Feet and Inches.
 2. All the measurements are taken from Level 1 @ 100' 0".

ABBREVIATIONS	
SS	SANITARY
SD	STORM DRAIN
OD	OVERFLOW STORM DRAIN
V	VENT
DCW	DOMESTIC COLD WATER
DHW	DOMESTIC HOT WATER
FIA	FROM ABOVE
T/A	TO ABOVE
T/B	TO BELOW
IE	INVERT ELEVATION
WCO	WALL CLEAN OUT
FD	FLOOR DRAIN
FFHP	HOSS BIB

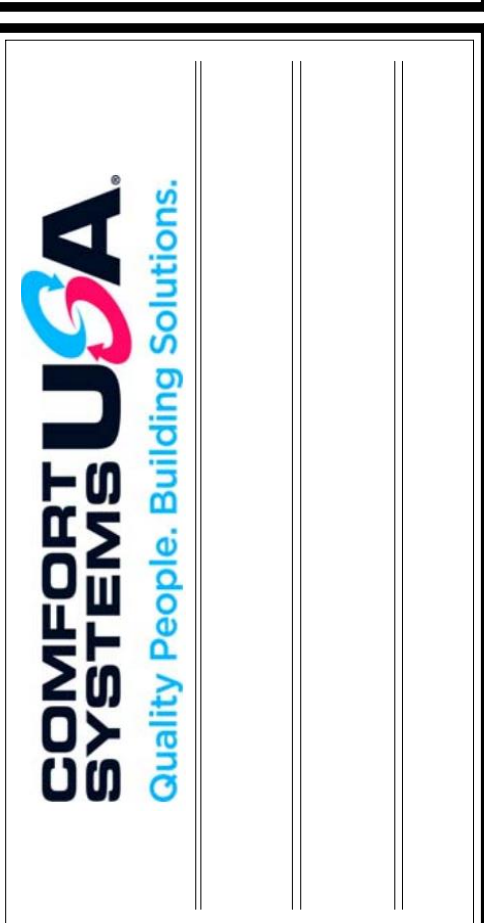
INSULATION SCHEDULE		
SERVICE	PIPE SIZE	THICKNESS
DOMESTIC COLD WATER	UP TO 1 1/2"	1" THICKNESS
DOMESTIC HOT WATER	ABOVE 1 1/2"	1 1/2" THICKNESS
DOMESTIC HOT WATER RETURN	UP TO 1 1/2"	1" THICKNESS
STORM DRAIN ABOVE GROUND	ABOVE 1 1/2"	1 1/2" THICKNESS

PIPE SLOPE SCHEDULE		
SERVICE	PIPE SIZE	SLOPE
SANITARY WASTE	UP TO 2"	1/4" PER FOOT
SANITARY VENT	ALL SIZE"	1/8" PER FOOT
STORM DRAIN	ALL SIZE"	1/8" PER FOOT
OVERFLOW STORM DRAIN	ALL SIZE"	1/8" PER FOOT

FIXTURE SCHEDULE				
FIXTURE	WASTE	VENT	COLD WATER	HOT WATER
DRINKING FOUNTAIN (DF)	1-1/2"	1-1/2"	1/2"	
FLOOR DRAINS/SINKS (FDFS)	2"	1-1/2"		
HOSE BIBS (HB)			3/4"	
JANITOR'S SINK (JS)	3"	1-1/2"	1/2"	1/2"
SHOWER	2"	1-1/2"	1/2"	1/2"
LAVATORIES AND SINKS, COUNTER MOUNTED	1-1/2"	1-1/4"	1/2"	1/2"
LAVATORIES AND SINKS, WALL MOUNTED	1-1/2"	1-1/4"	1/2"	1/2"
URINAL FLUSH VALVE WALL MOUNTED (UR)	2"	1-1/4"	1"	
WATER CLOSET FLUSH VALVE WALL MOUNTED (WC)	3"	1-1/2"	1-1/4"	

1 PLUMBING UNDERGROUND SHOP DRAWING
 1/8" = 1'-0"

Date:	06-05-2023
By:	ISSUED FOR REVIEW
Checked:	
Reviewed:	



LEGAL DISCLAIMER
 THIS DOCUMENT CONTAINS ALL INFORMATION AND DESIGN OF AN INSTRUMENT OF PROFESSIONAL SERVICE, AND SHALL NOT BE USED IN WHOLE OR IN PART FOR ANY OTHER PROJECT WITHOUT THE WRITTEN CONSENT OF COMFORT SYSTEMS USA. THE USER AGREES TO HOLD COMFORT SYSTEMS USA HARMLESS FROM ANY AND ALL LIABILITY ARISING FROM THE USE OF THIS DOCUMENT AS AT THE USER'S SOLE RISK WITHOUT LIABILITY ON BEHALF OF COMFORT SYSTEMS USA.

Bentonville Public Library Expansion
 405 S Main Street, Bentonville, AR 72712
PLUMBING UNDERGROUND SHOP DRAWING

PROJECT NUMBER:	321031
PROJECT ISSUE DATE:	07-05-2023
DRAWN:	
CHECKED:	
CONTRACT REF:	