

21122 - Bentonville Public Library Expansion

405 S Main Street
Bentonville, Arkansas 72712
United States



Flintco
184 East Fantinel Blvd
Springdale, Arkansas 72762
United States
(479) 750-4565

Title

23 00 00 : BIM Coordinated Shop Drawings

Submittal Manager

Rylee Kimball

Spec Section

23 33 46 - Flexible Ducts

Type

Shop Drawing

Number

23 33 46-2

Rev

0

Description

C. Shop Drawings: For project following BIM Coordination.

This submittal has been reviewed for conformance with the contract documents and observed deviations from the documents have been noted. This review does not relieve the issuing entity of the responsibility for dimensions, quantity or conformity with the contract documents, nor is it intended to relieve the Architect/Engineer of responsibility for review of compliance with the design requirements.

By: Rylee Kimball

Date: 8/2/23

Comfort Systems USA (Arkansas), Inc.
116 Commercial Ave.
Lowell, Arkansas 72745
479-770-8992 Phone
479-770-0801 Fax

Date: 08/02/2023

Return Request: 08/16/2023

Project: Bentonville Public Library Expansion
Supplier: Comfort Systems USA
Manufacturer: Various
Submittal: BIM Coordinated Shop Drawing
Submittal Number: 23 3346-2.0

ARCHITECT

MSR Design
510 Marquette Avenue South, Ste 200
Minneapolis, MN 55402

ENGINEER

HP Engineering
5214 West Village Parkway,
Suite 120
Rogers, AR 72758
(479) 899.6370

GENERAL CONTRACTOR

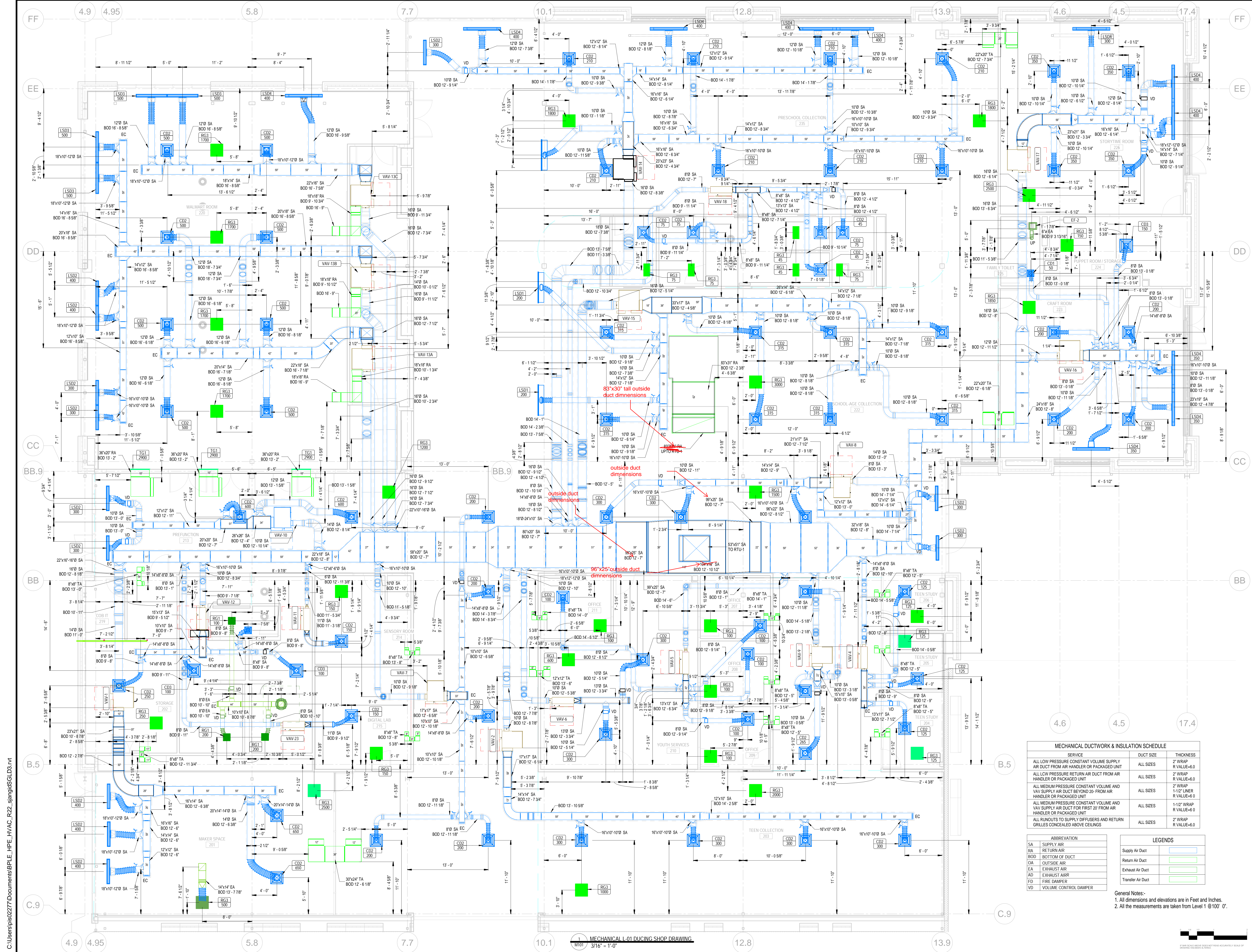
Flintco, LLC
184 Fantinel Drive
Springdale, AR 72762
(479) 750.4565

MECHANICAL SUBCONTRACTOR

Comfort Systems USA (Arkansas), Inc.
116 Commercial Ave.
Lowell, AR 72745
(479) 770.8992

NOTES:

CSUSA PROJECT NO.
23-4003
ghyatt@comfortar.com



MECHANICAL L-01 DUCING SHOP DRAWING
M101 3/16" = 1'-0"

SERVICE	DUCT SIZE	THICKNESS
ALL LOW PRESSURE CONSTANT VOLUME SUPPLY AIR DUCT FROM AIR HANDLER OR PACKAGED UNIT	ALL SIZES	2" WRAP R VALUE=6.0
ALL LOW PRESSURE RETURN AIR DUCT FROM AIR HANDLER OR PACKAGED UNIT	ALL SIZES	2" WRAP R VALUE=6.0
ALL MEDIUM PRESSURE CONSTANT VOLUME AND VAV SUPPLY AIR DUCT BEYOND 20' FROM AIR HANDLER OR PACKAGED UNIT	ALL SIZES	1-1/2" LINER R VALUE=6.0
ALL MEDIUM PRESSURE CONSTANT VOLUME AND VAV SUPPLY AIR DUCT FOR FIRST 20' FROM AIR HANDLER OR PACKAGED UNIT	ALL SIZES	1-1/2" WRAP R VALUE=6.0
ALL RUNOUTS TO SUPPLY DIFFUSERS AND RETURN GRILLES CONCEALED ABOVE CEILINGS	ALL SIZES	2" WRAP R VALUE=6.0

ABBREVIATION	LEGENDS
SA	SUPPLY AIR
RA	RETURN AIR
BD	BOTTOM OF DUCT
OA	OUTSIDE AIR
EA	EXHAUST AIR
AD	EXHAUST AIR DAMPER
FD	FIRE DAMPER
VD	VOLUME CONTROL DAMPER

General Notes:
1. All dimensions and elevations are in Feet and Inches.
2. All the measurements are taken from Level 1 @ 100' 0".

M101

ISSUED FOR REVIEW

COMFORT SYSTEMS USA
Quality People. Building Solutions.

LEGAL DISCLAIMER

THIS DOCUMENT IS THE PROPERTY OF COMFORT SYSTEMS USA. IT IS TO BE USED ONLY FOR THE PROJECT AND SITE SPECIFICALLY IDENTIFIED HEREIN. ANY REUSE OR MODIFICATION OF THIS DOCUMENT WITHOUT THE WRITTEN CONSENT OF COMFORT SYSTEMS USA IS STRICTLY PROHIBITED. COMFORT SYSTEMS USA SHALL NOT BE RESPONSIBLE FOR ANY ERRORS OR OMISSIONS IN THIS DOCUMENT.

Owner
Bentonville Public Library Expansion
405 S Main Street
Bentonville, AR 72712

MECHANICAL L-01 DUCING SHOP DRAWING

Rev.	Date	Description
0	07-24-2023	ISSUED FOR REVIEW

PROJECT NUMBER: **2021027**
DATE: **07-24-2023**

DRAWN BY: **PIS**
CHECKED BY: **PIS**

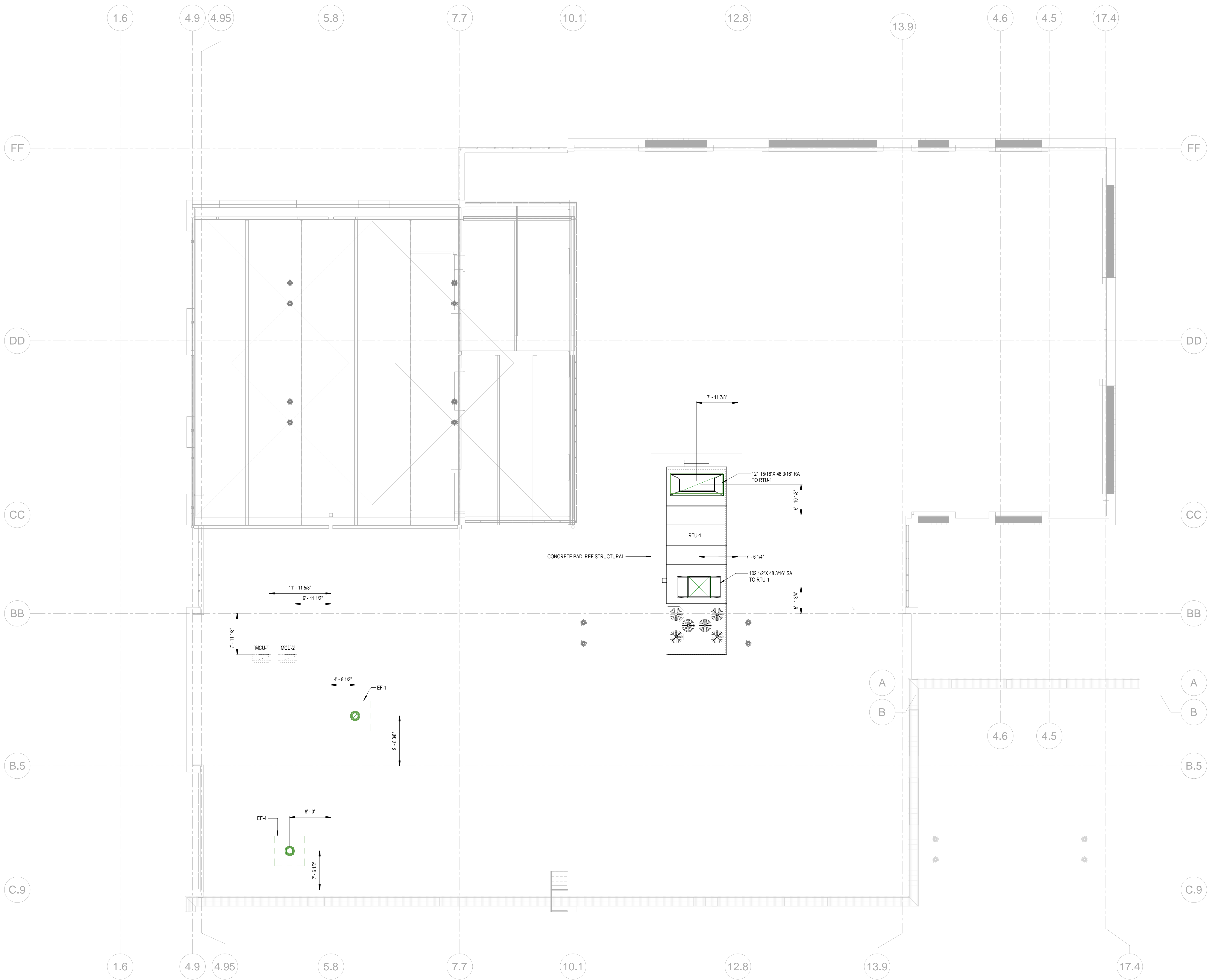
M101

C:\Users\ps02277\Documents\BPLE_HPE_HVAC_R22_siangis\BLD3.rvt

24-07-2023 13:54:13

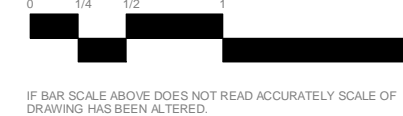
Rev.	Date	Issued For Review	Description	By
0	07-24-2023			

PROJECT NUMBER:	2021027
PROJECT ISSUE DATE:	07-24-2023
DRAWN:	PIS
CHECKED:	PIS
CONTRACT REP:	REP
M108	

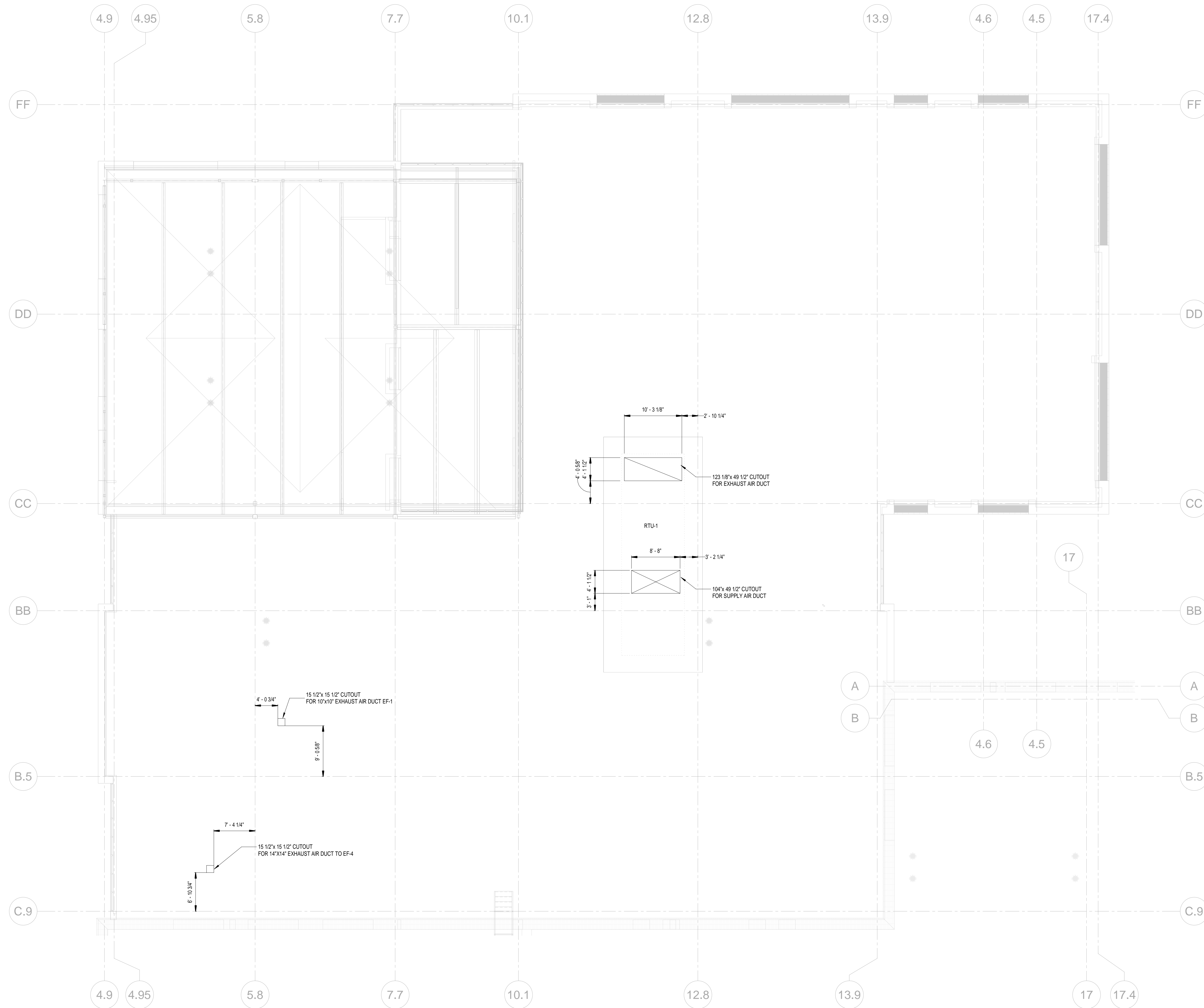


ABBREVIATION	Description
SA	SUPPLY AIR
RA	RETURN AIR
BD	BOTTOM OF DUCT
OA	OUTSIDE AIR
EA	EXHAUST AIR
EF	EXHAUST FAN
RTU	ROOF TOP UNIT
MCU	OUTDOOR UNIT

General Notes:
1. All dimensions and elevations are in Feet and Inches.



1 MECHANICAL ROOF SHOP DRAWING
M108 1/8" = 1'-0"



1 MECHANICAL ROOF PENETRATION DRAWING
M208 1/8" = 1'-0"

ABBREVIATION	
SA	SUPPLY AIR
RA	RETURN AIR
BOD	BOTTOM OF DUCT
QA	OUTSIDE AIR
EA	EXHAUST AIR
EF	EXHAUST FAN
RTU	ROOF TOP UNIT
MCU	OUTDOOR UNIT

General Notes:
1. All dimensions and elevations are in Feet and Inches.



Rev.	Date	Issued For Review	Description	By
0	07-24-2023			

PROJECT NUMBER:	2021027
PROJECT ISSUE DATE:	07-24-2023
DRAWN:	PIS
CHECKED:	PIS
CONTRACT REP:	REP
M208	