

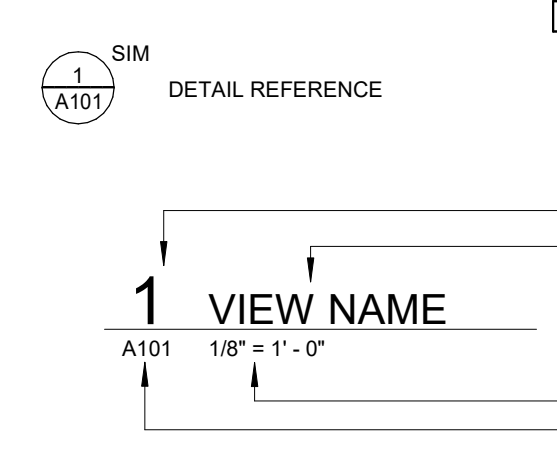
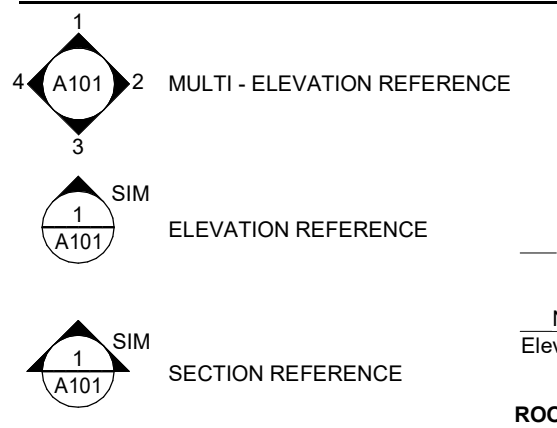
ABBREVIATIONS

Table of abbreviations for construction materials and finishes, including terms like A.F.F., A.F.L., A.V., AC, ACT, ADD, ADJ, etc.

Table of abbreviations for construction materials and finishes, including terms like A, A.F.F., A.F.L., A.V., AC, ACT, ADD, ADJ, etc.

Table of abbreviations for construction materials and finishes, including terms like A, A.F.F., A.F.L., A.V., AC, ACT, ADD, ADJ, etc.

DRAFTING SYMBOLS



SHEET INDEX

Table listing sheet numbers and names for general, architectural, and landscape sheets.

Table listing sheet numbers and names for structural, material, and MEP sheets.

SHEET INDEX

Table listing sheet numbers and names for mechanical, electrical, and plumbing sheets.

Table listing sheet numbers and names for fire protection, landscape, and other sheets.

SHEET INDEX

Table listing sheet numbers and names for various other sheets.

Table listing sheet numbers and names for various other sheets.

MATERIAL / PRODUCT ID LIST

Table listing material and product IDs for items like acoustic panels, carpet tiles, and wall coverings.

MATERIAL / PRODUCT ID LIST

Table listing material and product IDs for items like carpet tiles, wall coverings, and other materials.

MATERIAL / PRODUCT ID LIST

Table listing material and product IDs for items like insulation, wall panels, and other materials.

MATERIAL / PRODUCT ID LIST

Table listing material and product IDs for items like paint, rubber bases, and other materials.

MATERIAL / PRODUCT ID LIST

Table listing material and product IDs for items like shelves, mirror units, and other materials.

MATERIAL / PRODUCT ID LIST

Table listing material and product IDs for items like wall accessories, wall coverings, and other materials.

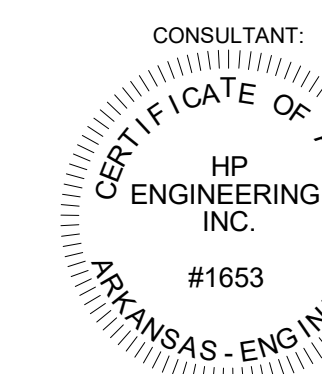
Project information for Bentonville Public Library Expansion, including location, architect (MSRDesign), and sheet details (Issue/Revision).

G000

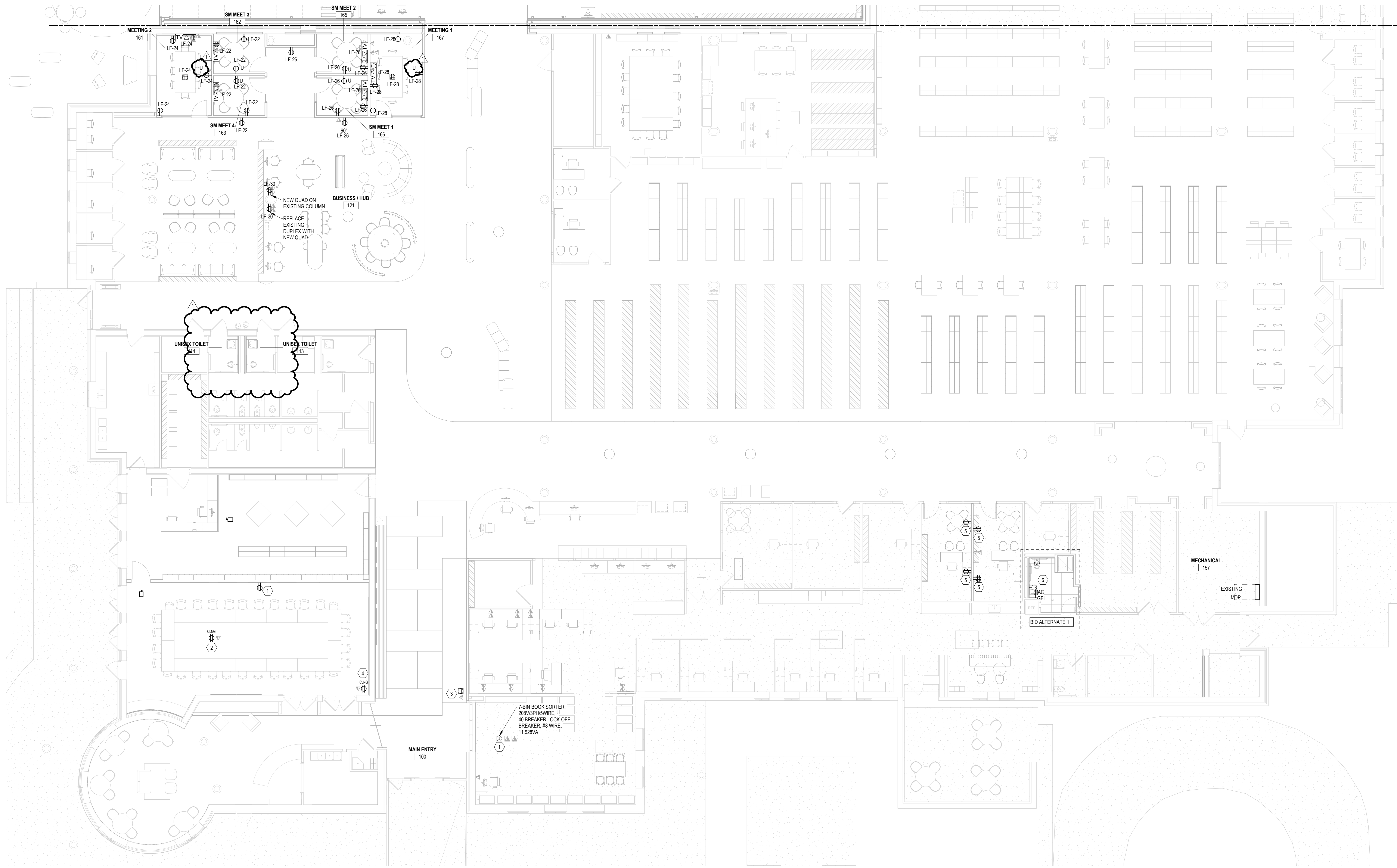


HP ENGINEERING

PROJECT NO. 212063R
100% COMPLETE
5504 W Pinnacle Pointe Dr
Suite 200
Rogers, AR
TEL 479-899-6370
http://www.hpengineeringinc.com

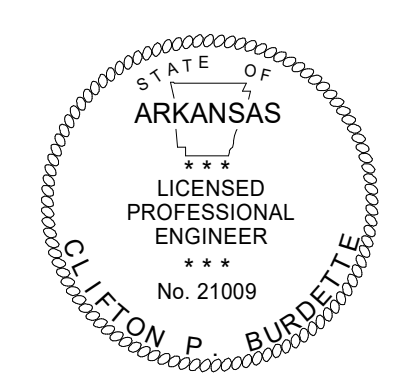


- KEYNOTES**
- UTILIZE EXISTING CIRCUIT THAT MAY BECOME AVAILABLE DUE TO DEMOLITION. VERIFY NEMA CONFIGURATION, CONDUIT AND CONDUCTOR SIZE, VOLTAGE AND PHASE WITH EQUIPMENT BEING INSTALLED.
 - CEILING MOUNTED PROJECTOR: RE-USE CIRCUITRY. EXTEND CONDUIT AND CONDUCTORS TO NEW LOCATION.
 - GATE: UTILIZE CIRCUIT THAT MAY BECOME AVAILABLE DUE TO DEMOLITION. PROVIDE 120V, 20A CIRCUIT BREAKER AND #12 WIRE.
 - CEILING MOUNTED SCREEN: RE-USE CIRCUITRY. EXTEND CONDUIT AND CONDUCTORS TO NEW LOCATION.
 - CONNECT TO EXISTING CIRCUIT IN SAME SPACE.
 - PROVIDE 120V, 20A, #12 WIRE. UTILIZE EXISTING CIRCUIT THAT MAY BECOME AVAILABLE DUE TO DEMOLITION. VERIFY NEMA CONFIGURATION, CONDUIT AND CONDUCTOR SIZE, VOLTAGE AND PHASE WITH EQUIPMENT BEING INSTALLED.



**Bentonville Public Library
Expansion**
405 S Main Street
Bentonville, AR 72712

Engineer Seal



Signature *Clayton Burdette*

Print Name _____

Date 1/18/2023 License No. _____

BID SET

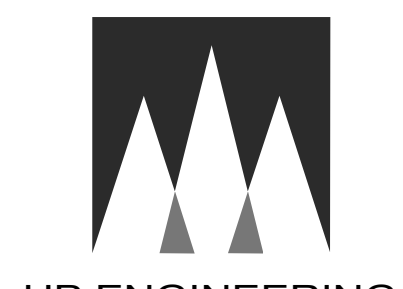
ISSUE / REVISION

Mark	Date	Description
	12/10/2021	SCHEMATIC DESIGN PRICING
	06/22/2022	DESIGN DEVELOPMENT PRICING
	8/12/2022	DD VE OPTION B
	10/13/2022	PRE APP SET
	10/28/2022	LARGE SCALE DEVELOPMENT SUBMITTAL
	10/31/2022	CD PRICING SET
	11/14/2022	SECOND LSD SUBMITTAL
	11/28/2022	THIRD LSD SUBMITTAL
	12/21/2022	PERMIT SET
	1/8/2023	BID SET
1	1/18/2023	ADDENDUM #1

POWER PLAN - EXISTING

E101

1 POWER PLAN - EXISTING
E101 1/8" = 1'-0"

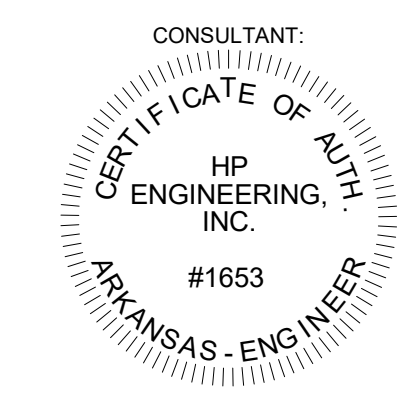


HP ENGINEERING

PROJECT NO. 212063R
100% COMPLETE

5504 W Pinnacle Pointe Dr
Suite 200
Rogers, AR
TEL 479-899-6370

http://www.hpengineeringinc.com



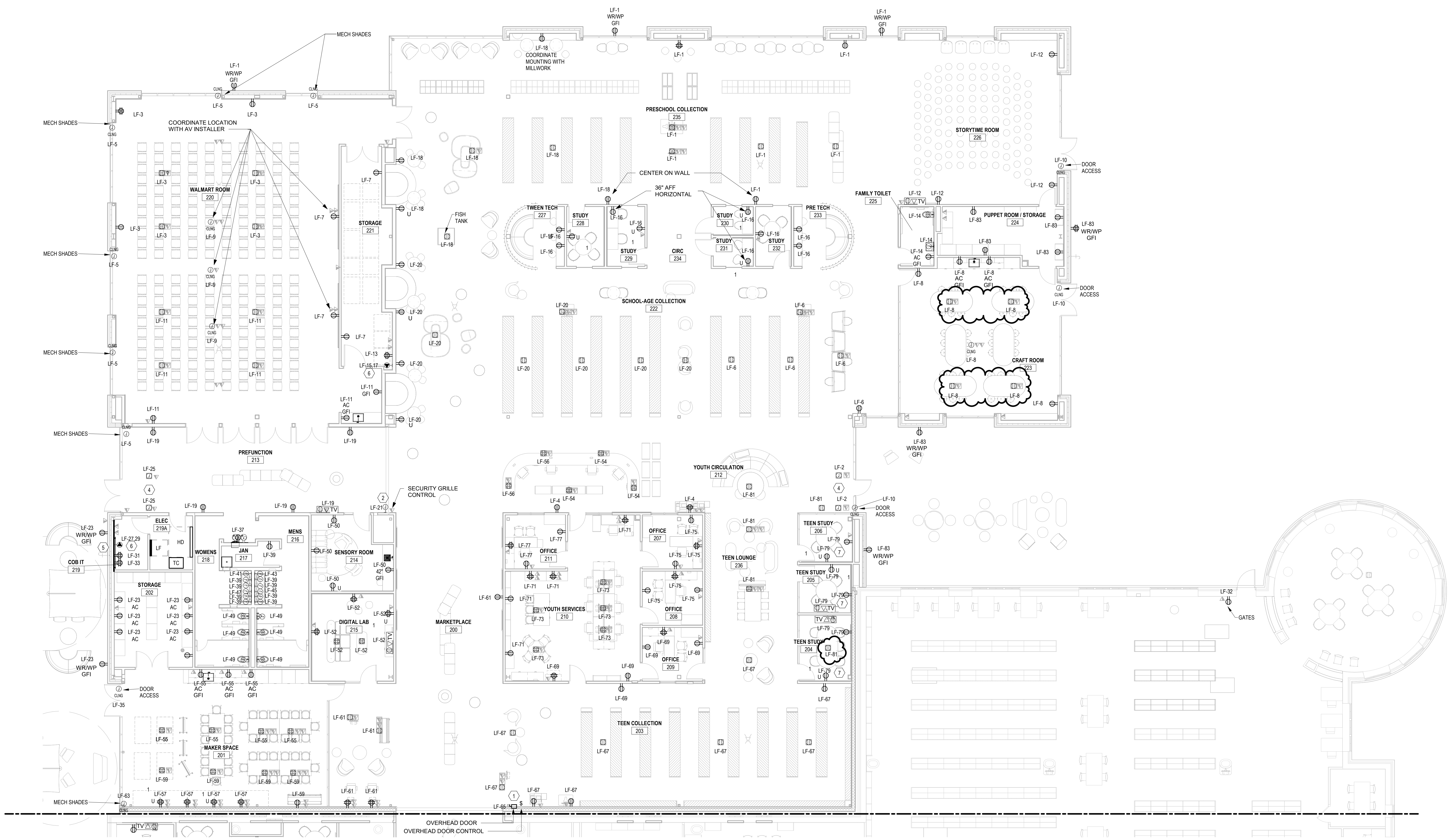
KEYNOTES

- CONNECT TO FA SYSTEM
- SECURITY GRILLE: COORDINATE WITH MANUFACTURER
- COORDINATE DEVICE MOUNT WITH INTERIOR FINISH THICKNESS
- GATES: COORDINATE WITH MANUFACTURER
- 3/4" FIRE-RATED PLYWOOD WITH GROUND BUS BAR
- VERIFY NEMA RATION WITH EQUIPMENT BEING INSTALLED
- PROVIDE BLACK DEVICES AND COVER PLATES IN THIS ROOM.

POWER PLAN NOTES

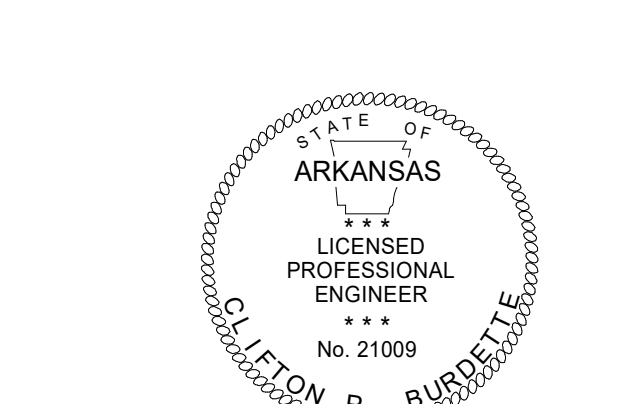
COORDINATE EXACT LOCATION OF ALL FLOOR BOXES WITH ARCHITECT PRIOR TO INSTALLATION. VERIFY AV REQUIREMENTS WITH AV CONTRACTOR AND ARCHITECT PRIOR TO INSTALLATION.

MAKE CONNECTIONS TO AUTOMATIC FLUSH TOILETS/SURINAL AND AUTOMATIC SINKS PER MANUFACTURER SPECIFICATIONS.



**Bentonville Public Library
Expansion**
405 S Main Street
Bentonville, AR 72712

Engineer Seal



Signature: *Clifton Burdette*
Print Name: Clifton Burdette
Date: 1/18/2023 License No. 21009

BID SET

ISSUE / REVISION

Mark	Date	Description
	12/16/2021	SCHEMATIC DESIGN PRICING
	6/22/2022	DESIGN DEVELOPMENT PRICING
	8/1/2022	DD VE OPTION B
	10/13/2022	PRE APP SET
	10/28/2022	LARGE SCALE DEVELOPMENT SUBMITTAL
	10/31/2022	CD PRICING SET
	11/14/2022	SECOND LSD SUBMITTAL
	11/28/2022	THIRD LSD SUBMITTAL
	12/21/2022	PERMIT SET
	1/8/2023	BID SET
1	1/18/2023	ADDENDUM #1
	1/19/2023	ADDENDUM #2
	3/22/2023	ASH-01

POWER PLAN - ADDITION

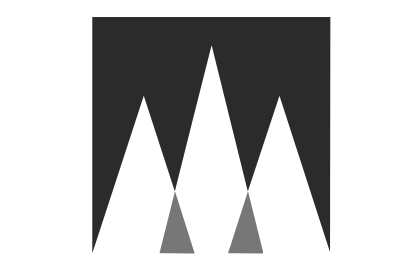
E102

1 POWER PLAN - ADDITION
E102 1/8" = 1'-0"

Drawing: 001 - Electrical - Power - Addition - E102 - 1/8" = 1'-0" - 1/18/2023 - HP Engineering, Inc.

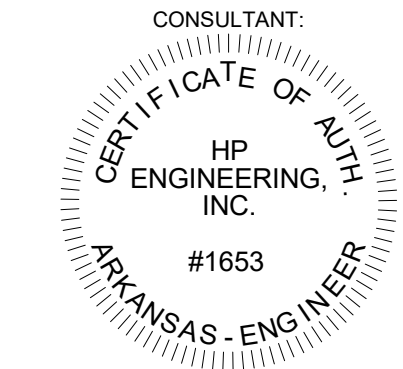
MECHANICAL POWER PLAN NOTES

EXHAUST FANS SHALL BE CIRCUITED WITH LIGHTS UNLESS SHOWN OTHERWISE.
 REFER TO MECHANICAL PLANS FOR CONTROLS OF EXHAUST FANS.
 RTU DISCONNECTS AND RECEPTACLES ARE FACTORY INSTALLED.
 ALL 480V/3PH VAV'S REQUIRE A NEUTRAL CONDUCTOR.
 EC SHALL MAKE ALL CONNECTIONS BETWEEN THE INDOOR AND OUTDOOR UNITS OF THE MINI-SPLIT SYSTEM. PROVIDE ALL MATERIAL.



HP ENGINEERING

PROJECT NO. 212063R
 100% COMPLETE
 5504 W Pinnacle Pointe Dr
 Suite 200
 Rogers, AR
 TEL 479-899-6370
 http://www.hpengineeringinc.com



Architecture and Interiors

MSRDesign

510 Marquette Avenue South, Suite 200
 Minneapolis, MN 55402 | 612.375.0336

Associate Architect

Hight Jackson Associates PA

5201 W Village Pkwy #300
 Rogers, AR 72758 | 479.464.4965

Civil Engineer

E | D | G

216 West Birch Street
 Rogers, AR 72756 | 501.378.0200

Landscape Architect

TEN x TEN

575 SE 9th St #210
 Minneapolis, MN 55414 | 612.440.8369

Structural Engineer

3100 S Market St #202
 Rogers, AR 72758 | 479.621.6128

MEP Engineer

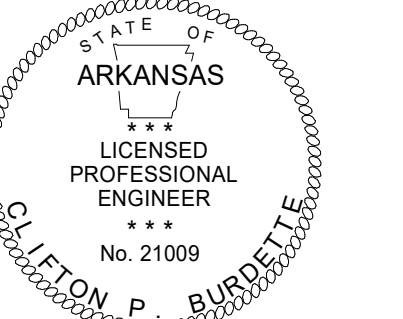
HP Engineering, Inc.

5504 W Pinnacle Pointe Dr. Ste. 200
 Rogers, AR 72758 | 479.899.6370

**Bentonville Public Library
 Expansion**
 405 S Main Street
 Bentonville, AR 72712

Project No. 2021037

Engineer Seal



Signature: *Stephen Burdette*

Print Name

Date: 1/6/2023 License No.

BID SET

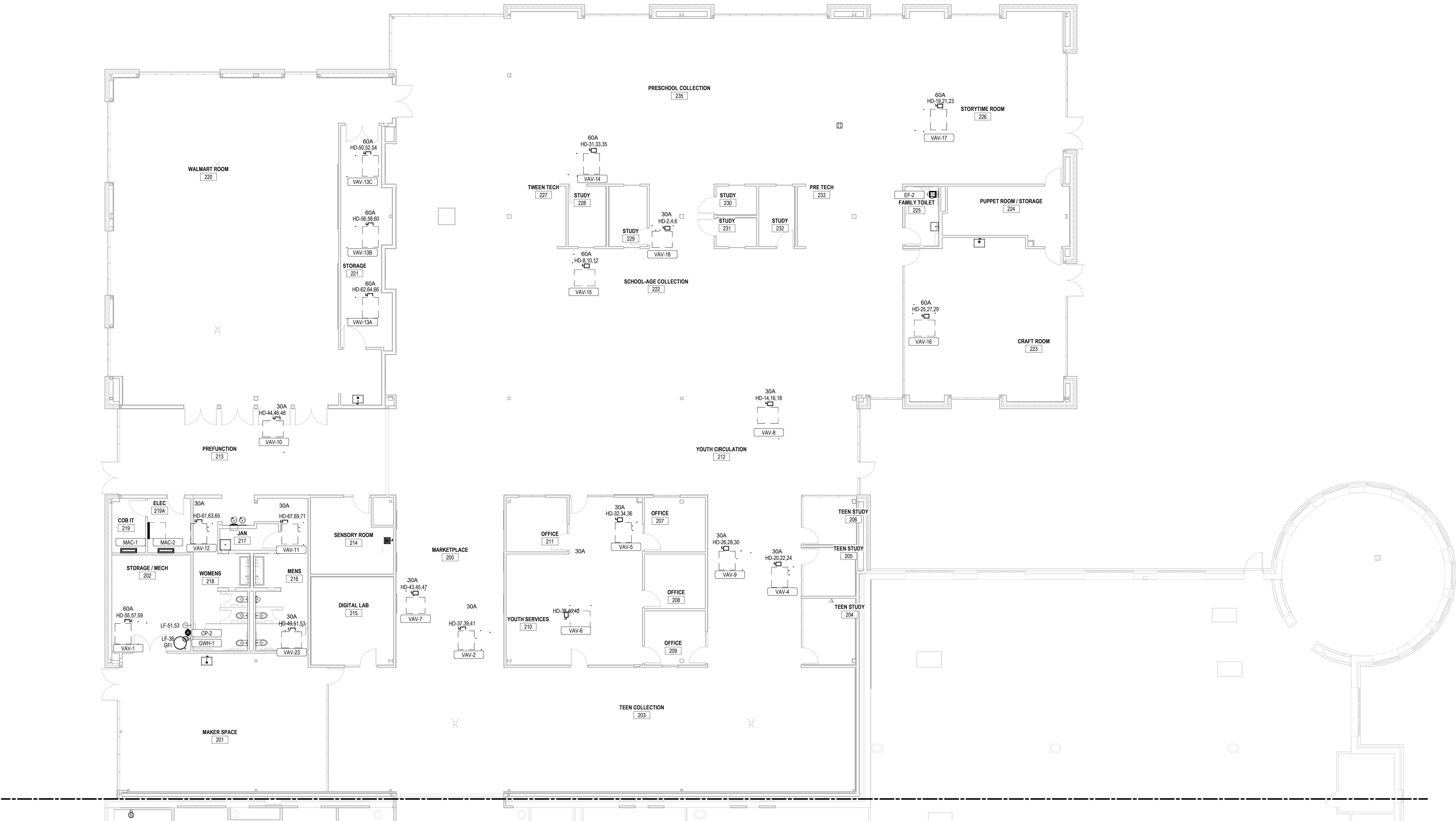
ISSUE / REVISION

Mark	Date	Description
12/10/2021	12/10/2021	SCHEMATIC DESIGN PRICING
06/22/2022	06/22/2022	DESIGN DEVELOPMENT PRICING
8/12/2022	8/12/2022	DD VE OPTION B
10/13/2022	10/13/2022	PRE APP SET
10/28/2022	10/28/2022	LARGE SCALE DEVELOPMENT SUBMITTAL
10/31/2022	10/31/2022	CD PRICING SET
11/14/2022	11/14/2022	SECOND LSD SUBMITTAL
11/28/2022	11/28/2022	THIRD LSD SUBMITTAL
12/21/2022	12/21/2022	PERMIT SET
1/6/2023	1/6/2023	BID SET

HP Engineering, Inc.

MECHANICAL POWER PLAN - ADDITION

E103





HP ENGINEERING

PROJECT NO. 212063R
100% COMPLETE

5504 W Pinnacle Pointe Dr

Suite 200

Rogers, AR

TEL 479-899-6370

http://www.hpengineeringinc.com

CONSULTANT:

E | D | G

HP ENGINEERING, INC.

1653

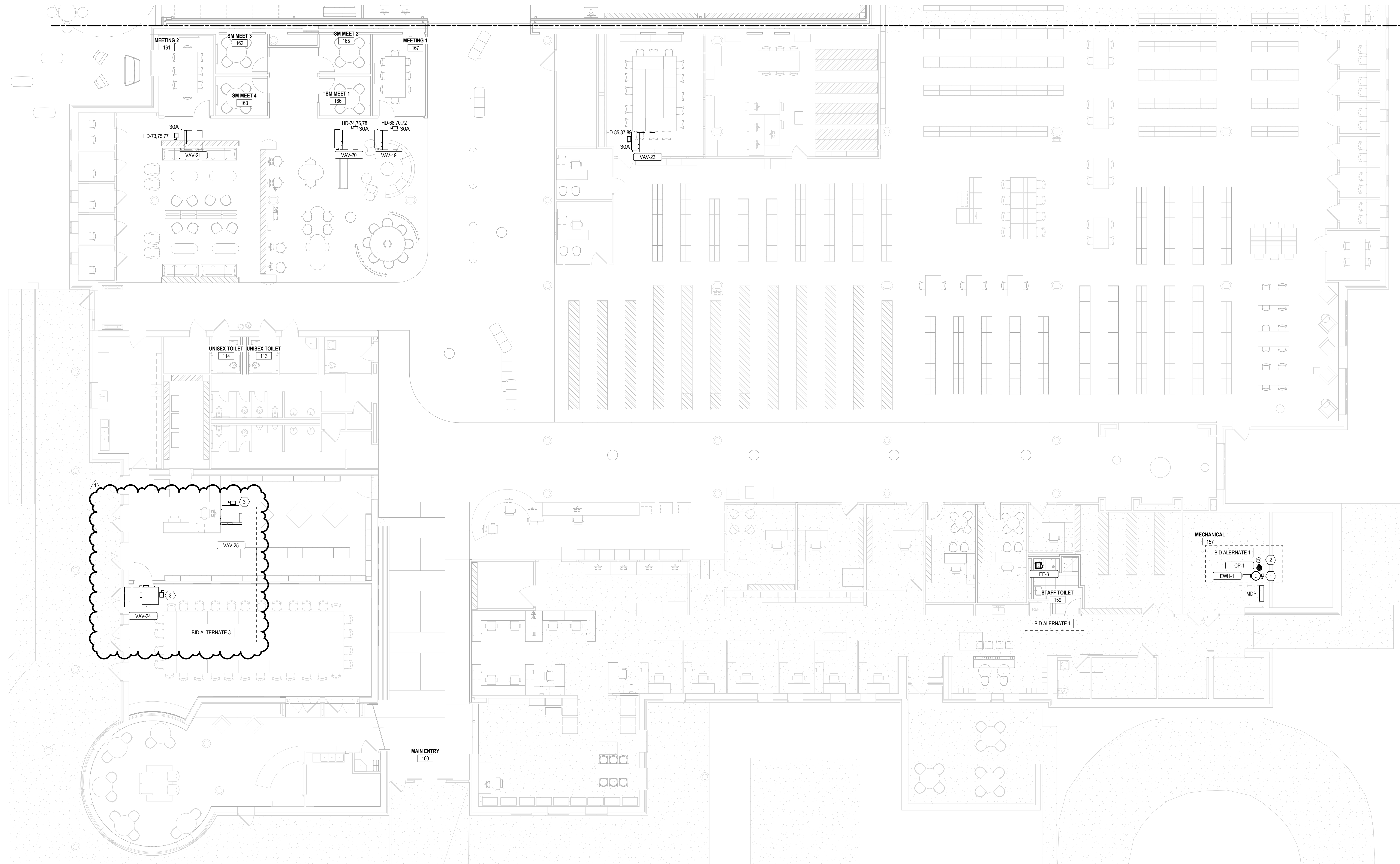
ARKANSAS - ENGINEER

KEYNOTES

- 1 EWH-1 UTILIZE SPACE IN NEAREST EXISTING 120/208V/3PH/4W PANEL THAT HAS AVAILABLE PHYSICAL SPACE AND AMPACITY TO ACCOMMODATE NEW LOAD - 4000KW. PROVIDE 208V/1PH 30A CIRCUIT BREAKER, 30A DISCONNECT AND #8 WIRE.
- 2 CP-1 UTILIZE SPACE IN NEAREST EXISTING 120/208V/3PH/4W PANEL THAT HAS AVAILABLE PHYSICAL SPACE AND AMPACITY TO ACCOMMODATE NEW LOAD - 27W. PROVIDE 120V/1PH 20A CIRCUIT BREAKER AND #12 WIRE.
- 3 EWH-2 UTILIZE SPACE IN NEAREST EXISTING 120/208V/3PH/4W PANEL THAT HAS AVAILABLE PHYSICAL SPACE AND AMPACITY TO ACCOMMODATE NEW LOAD - 26.82VA EACH. UTILIZE SPACE IN NEAREST ELECTRICAL PANEL OF INDICATED VOLTAGE THAT HAS SUFFICIENT AMPACITY AND PHYSICAL SPACE TO ACCOMMODATE NEW CIRCUIT BREAKER AND LOAD. ELECTRICAL LOAD IS 26.82VA EACH.

MECHANICAL POWER PLAN NOTES

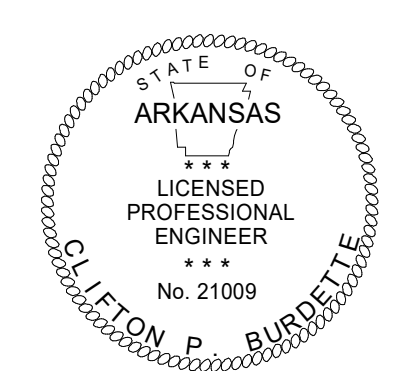
EXHAUST FANS SHALL BE CIRCUITED WITH LIGHTS UNLESS SHOWN OTHERWISE. REFER TO MECHANICAL PLANS FOR CONTROLS OF EXHAUST FANS.
RTU DISCONNECTS AND RECEPTACLES ARE FACTORY INSTALLED.
ALL 480V/3PH VAV'S REQUIRE A NEUTRAL CONDUCTOR.
EC SHALL MAKE ALL CONNECTIONS BETWEEN THE INDOOR AND OUTDOOR UNITS OF THE MINI-SPLIT SYSTEM. PROVIDE ALL MATERIAL.



1 POWER PLAN - EXISTING
E104 1/8" = 1'-0"

Bentonville Public Library
Expansion
405 S Main Street
Bentonville, AR 72712

Engineer Seal



Signature Clayton Burdette

Print Name
Date 1/18/2023 License No.

BID SET

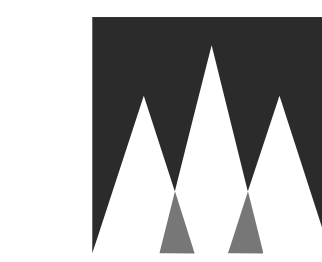
ISSUE / REVISION

Mark	Date	Description
	12/16/2021	SCHEMATIC DESIGN PRICING
	06/22/2022	DESIGN DEVELOPMENT PRICING
	8/12/2022	DD VE OPTION B
	10/13/2022	PRE APP SET
	10/28/2022	LARGE SCALE DEVELOPMENT SUBMITTAL
	10/31/2022	CD PRICING SET
	11/14/2022	SECOND LSD SUBMITTAL
	11/28/2022	THIRD LSD SUBMITTAL
	12/21/2022	PERMIT SET
	1/6/2023	BID SET
1	1/18/2023	ADDENDUM #1

Planning 2021 Copyright © MSR, Scherer & Roberts, Ltd.

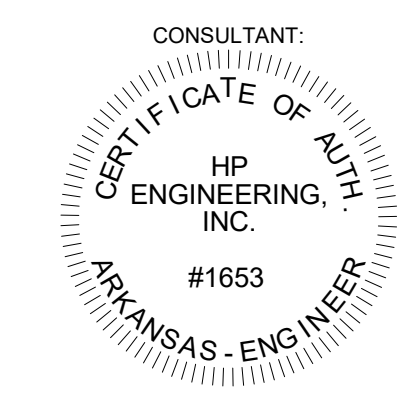
MECHANICAL POWER PLAN - EXISTING

E104



Architecture and Interiors
MSRDesign
 510 Marquette Avenue South, Suite 200
 Minneapolis, MN 55402 | 612.375.0336

HP ENGINEERING
 PROJECT NO. 212063R
 100% COMPLETE
 5504 W Pinnacle Pointe Dr
 Suite 200
 Rogers, AR
 TEL 479-899-6370
 http://www.hpengineeringinc.com



Associate Architect
Hight Jackson Associates PA
 5201 W Village Pkwy #300
 Rogers, AR 72758 | 479-464-4965

Civil Engineer
E | D | G
 216 West Birch Street
 Rogers, AR 72758 | 501.378.0200

Landscape Architect
TEN x TEN
 575 SE 9th St #210
 Minneapolis, MN 55414 | 612.440.8369

Structural Engineer
 3100 S Market St #202
 Rogers, AR 72758 | 479.621.6128

MEP Engineer
HP Engineering, Inc.
 5504 W Pinnacle Pointe Dr. Ste. 200
 Rogers, AR 72758 | 479.899.6370

Project No. 2021037
**Bentonville Public Library
 Expansion**
 405 S Main Street
 Bentonville, AR 72712

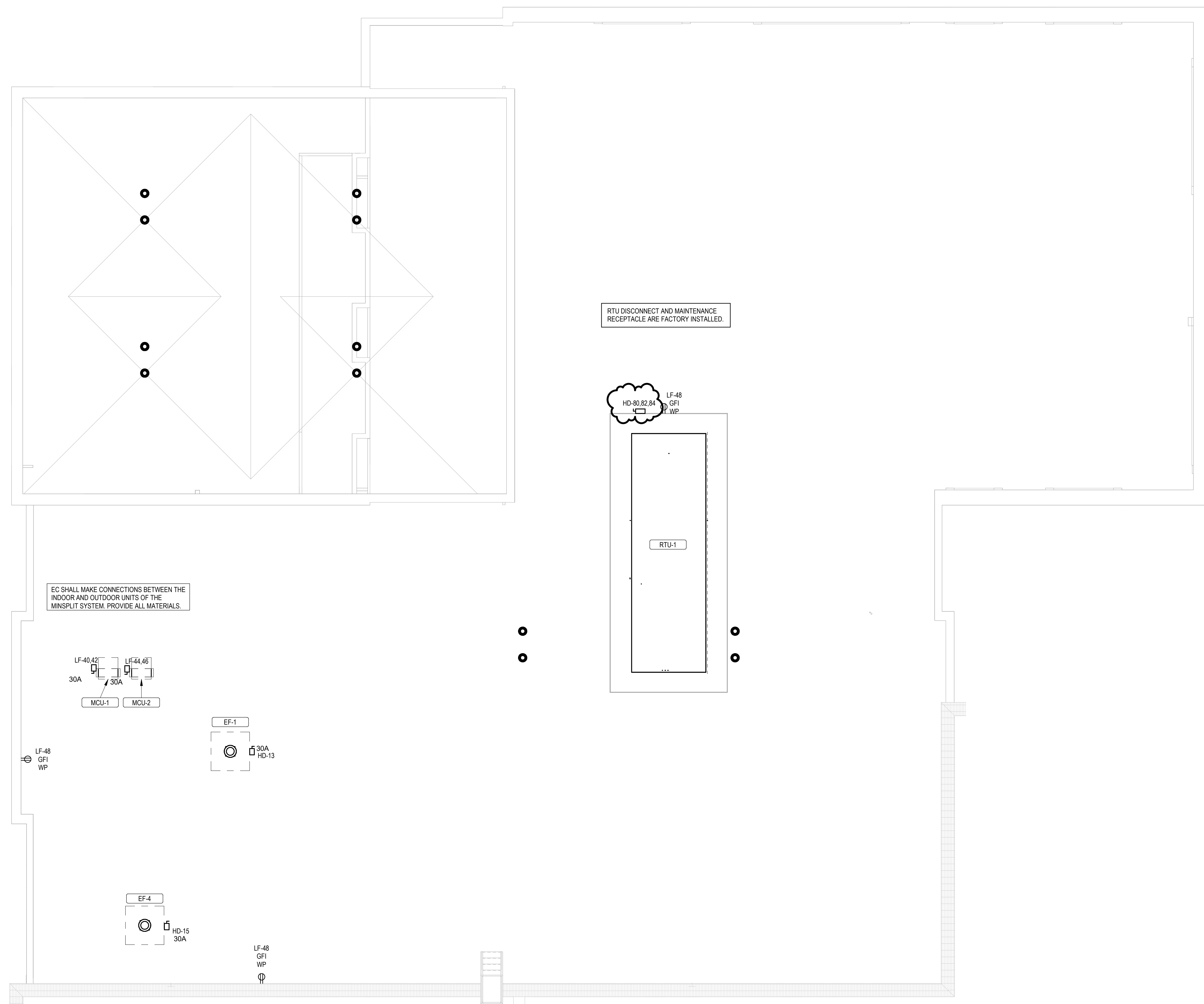
Engineer Seal

 Signature *Clifton Burdette*
 Print Name Clifton Burdette
 Date 1/18/2023 License No. 21009

BID SET

ISSUE / REVISION

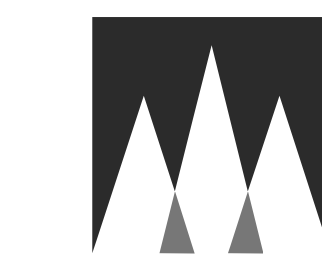
Mark	Date	Description
	12/16/2021	SCHEMATIC DESIGN PRICING
	6/22/2022	DESIGN DEVELOPMENT PRICING
	8/12/2022	DD VE OPTION B
	10/13/2022	PRE APP SET
	10/28/2022	LARGE SCALE DEVELOPMENT SUBMITTAL
	10/31/2022	CD PRICING SET
	11/14/2022	SECOND LSD SUBMITTAL
	11/28/2022	THIRD LSD SUBMITTAL
	12/21/2022	PERMIT SET
	1/6/2023	BID SET
	1/18/2023	ADDENDUM #1
	1/19/2023	ADDENDUM #2
	3/22/2023	ASH-01



1 ROOF POWER LAN
 E105 1/8" = 1'-0"

MECHANICAL POWER
 PLAN - ROOF

E105



Architecture and Interiors

MSRDesign
510 Marquette Avenue South, Suite 200
Minneapolis, MN 55402 | 612.375.0336

Associate Architect

Hight Jackson Associates PA
5201 W Village Pkwy #300
Rogers, AR 72758 | 479.464.4965

Civil Engineer

E | D | G
216 West Birch Street
Rogers, AR 72758 | 501.378.0200

Landscape Architect

TEN x TEN
575 SE 9th St #210
Minneapolis, MN 55414 | 612.440.8369

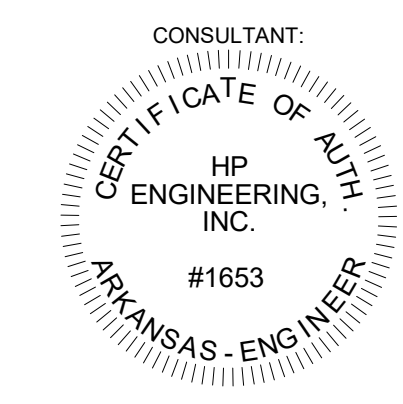
Structural Engineer

3100 S Market St #202
Rogers, AR 72758 | 479.621.6128

MEP Engineer

HP Engineering, Inc.
5504 W Pinnacle Point Dr. Ste. 200
Rogers, AR 72758 | 479.899.6370

HP ENGINEERING
PROJECT NO. 212063R
100% COMPLETE
5504 W Pinnacle Point Dr
Suite 200
Rogers, AR
TEL 479-899-6370
<http://www.hpengineeringinc.com>



- KEYNOTES**
- 1 RTU-2: REPLACE EXISTING 250A CIRCUIT BREAKER WITH NEW 225A CIRCUIT BREAKER AND #40 WIRE.
 - 2 RTU-3: UTILIZE EXISTING 110A, 480V/3PH CIRCUIT BREAKER AND WIRING.
 - 3 RTU-4: REPLACE EXISTING 35A, 480V/3PH CIRCUIT BREAKER WITH NEW 40A, 480V/3PH CIRCUIT BREAKER.

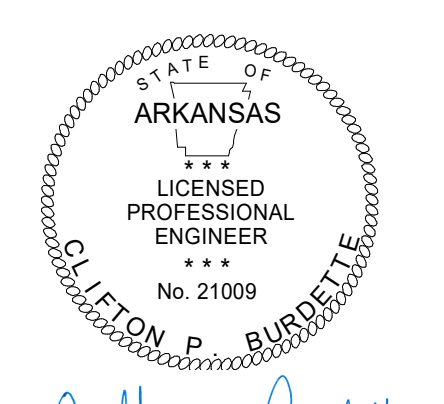


Project No. 2021037

Bentonville Public Library Expansion

405 S Main Street
Bentonville, AR 72712

Engineer Seal



Signature *Christopher Burdette*
Print Name
Date 1/18/2023 License No.

BID SET

ISSUE / REVISION

Mark	Date	Description
	12/16/2021	SCHEMATIC DESIGN PRICING
	05/22/2022	DESIGN DEVELOPMENT PRICING
	8/12/2022	DD VE OPTION B
	10/13/2022	PRE APP SET
	10/28/2022	LARGE SCALE DEVELOPMENT SUBMITTAL
	10/31/2022	CD PRICING SET
	11/14/2022	SECOND LSD SUBMITTAL
	11/28/2022	THIRD LSD SUBMITTAL
	12/21/2022	PERMIT SET
	1/8/2023	BID SET
1	1/18/2023	ADDENDUM #1

Sheet 001 - Electrical - Schematics & Details - 10

MECHANICAL POWER
PLAN - EXISTING
ROOF BID ALT #3

E106

1 ROOF POWER LAN
E106 1/8" = 1'-0"

Sheet 001 - Electrical - Schematics & Details - 10



HP ENGINEERING

PROJECT NO. 212063R
100% COMPLETE

5504 W Pinnacle Pointe Dr
Suite 200

Rogers, AR

TEL 479-899-6370

http://www.hpengineeringinc.com

CONSULTANT:

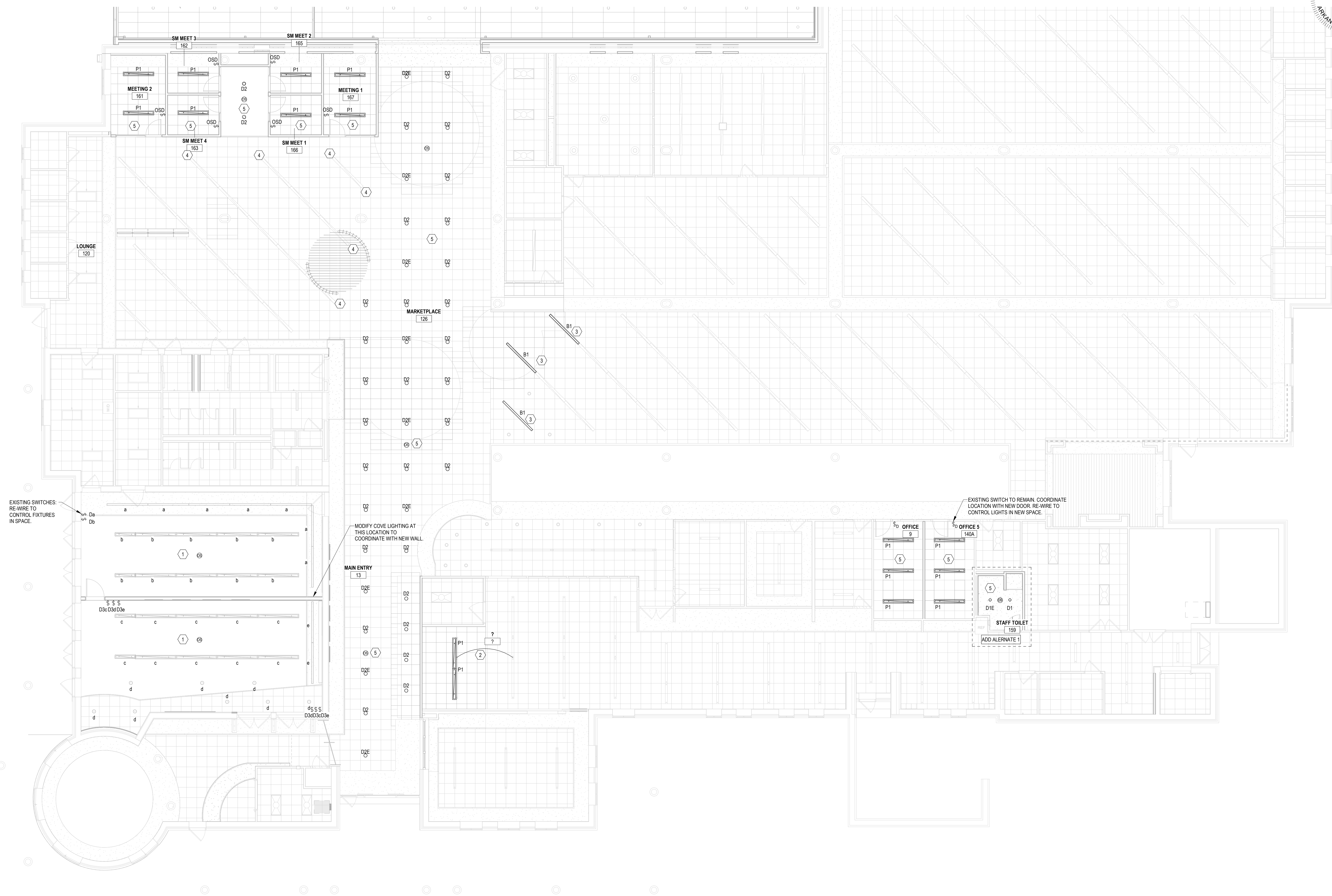
CERTIFICATE OF AUTH.

HP ENGINEERING, INC.

#1653

ARKANSAS - ENGINEER

- KEYNOTES**
- 1 LIGHTING IN THIS ROOM IS EXISTING TO REMAIN. PROVIDE NEW SWITCHING AS SHOWN.
 - 2 CIRCUIT AND CONTROL WITH EXISTING ADJACENT LIGHTING.
 - 3 UTILIZE EXISTING LINEAR PENDANT REMOVED FROM FORMER CHILDRENS LIBRARY TO EXTEND THE LENGTH OF FIXTURE RUNS IN GENERAL STUDY SPACE.
 - 4 EXISTING LINEAR PENDANTS RUNS TO BE SHORTENED PER ELECTRICAL DEMO PLANS. RE-USE EXISTING CONTROLS.
 - 5 UTILIZE EXISTING CIRCUITRY. PROVIDE NEW CONTROLS AS SHOWN.



**Bentonville Public Library
Expansion**
405 S Main Street
Bentonville, AR 72712

Project No. 2021037

Engineer Seal



Signature: *Glenn P. Burdette*

Print Name

Date: 1/6/2023 License No.

BID SET

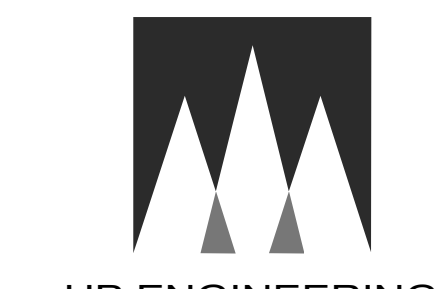
ISSUE / REVISION

Mark	Date	Description
12/16/2021	12/16/2021	SCHEMATIC DESIGN PRICING
06/22/2022	06/22/2022	DESIGN DEVELOPMENT PRICING
8/12/2022	8/12/2022	DD VE OPTION B
10/13/2022	10/13/2022	PRE APP SET
10/28/2022	10/28/2022	LARGE SCALE DEVELOPMENT SUBMITTAL
10/31/2022	10/31/2022	CD PRICING SET
11/14/2022	11/14/2022	SECOND LSD SUBMITTAL
11/28/2022	11/28/2022	THIRD LSD SUBMITTAL
12/21/2022	12/21/2022	PERMIT SET
1/6/2023	1/6/2023	BID SET

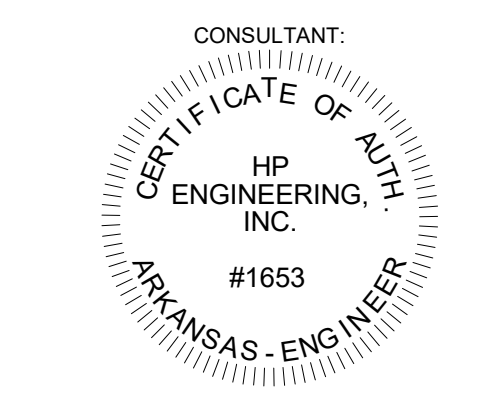
HP Engineering, Inc.

LIGHTING PLAN -
EXISTING

E201



HP ENGINEERING
PROJECT NO. 212063R
100% COMPLETE
5504 W Pinnacle Pointe Dr
Suite 200
Rogers, AR
TEL 479-899-6370
http://www.hpengineeringinc.com



Associate Architect
Hight Jackson Associates PA
5201 W Village Pkwy #300
Rogers, AR 72758 | 479-464-4965

Civil Engineer
E | D | G
216 West Birch Street
Rogers, AR 72758 | 501.378.0200

Landscape Architect
TEN x TEN
575 SE 9th St #210
Minneapolis, MN 55414 | 612.440.8369

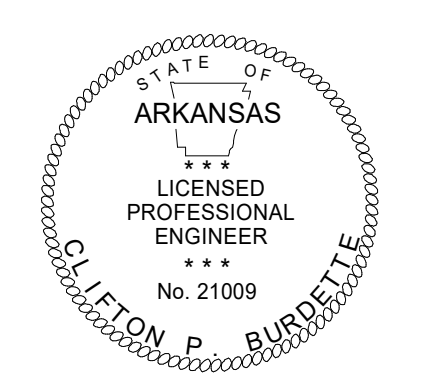
Structural Engineer
3100 S Market St #202
Rogers, AR 72758 | 479.621.6128

MEP Engineer
HP Engineering, Inc.
5504 W Pinnacle Pointe Dr. Ste. 200
Rogers, AR 72758 | 479.899.6370

**Bentonville Public Library
Expansion**
405 S Main Street
Bentonville, AR 72712

Project No. 2021037

Engineer Seal



Signature: *Clifton Burdette*
Print Name: Clifton Burdette
Date: 1/18/2023 License No. 21009

BID SET

ISSUE / REVISION

Mark	Date	Description
	12/16/2021	SCHEMATIC DESIGN PRICING
	6/22/2022	DESIGN DEVELOPMENT PRICING
	8/1/2022	DD VE OPTION B
	10/13/2022	PRE APP SET
	10/28/2022	LARGE SCALE DEVELOPMENT SUBMITTAL
	10/31/2022	CD PRICING SET
	11/14/2022	SECOND LSD SUBMITTAL
	11/28/2022	THIRD LSD SUBMITTAL
	12/21/2022	PERMIT SET
	1/6/2023	BID SET
	1/18/2023	ADDENDUM #1
	1/19/2023	ADDENDUM #2
	3/22/2023	ASH-01

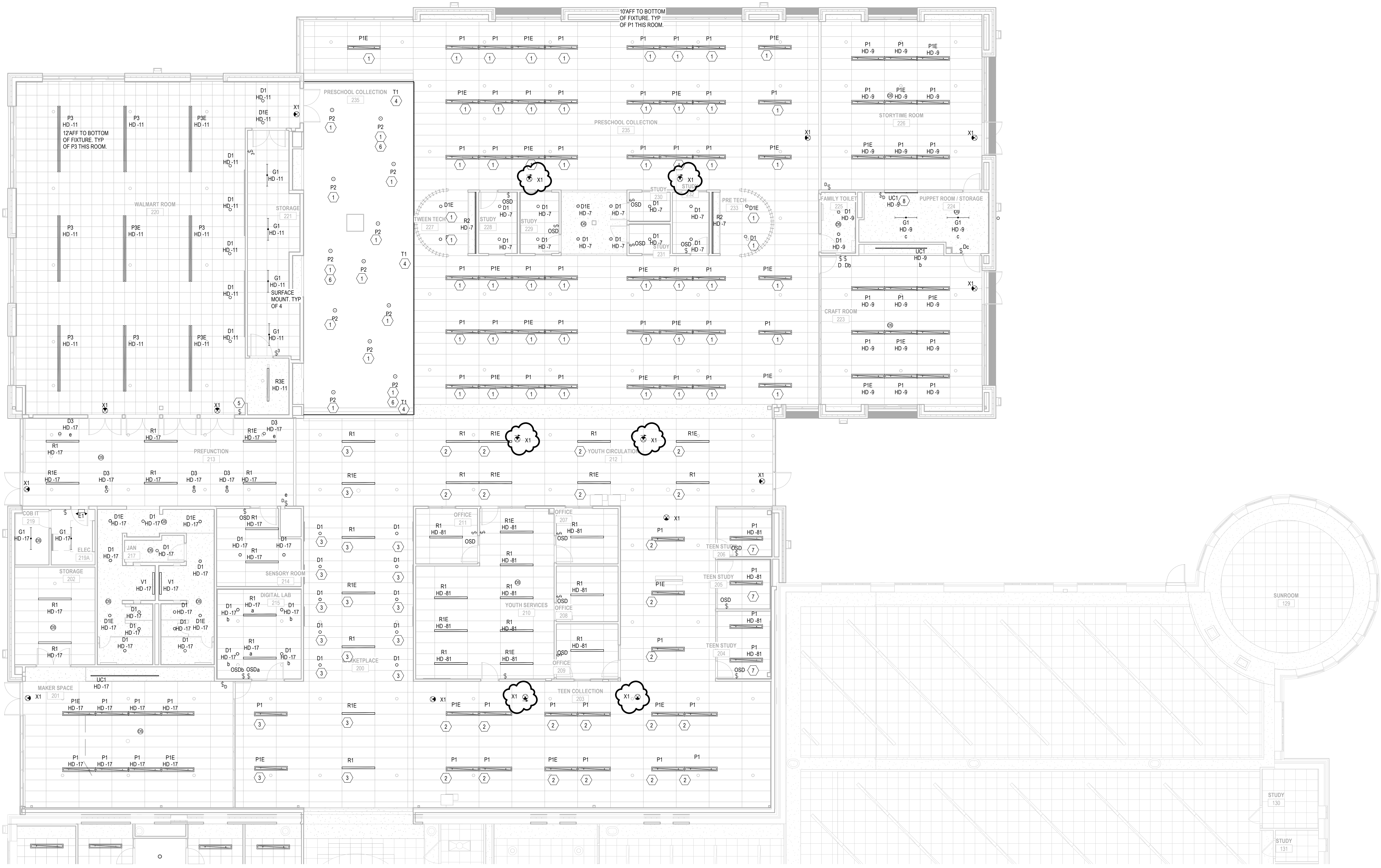
Issued: 03/01/2023

LIGHTING PLAN - ADDITION

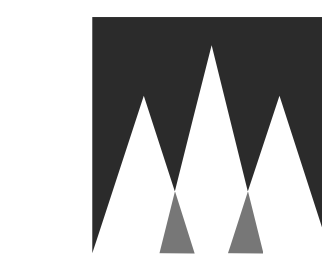
E202

TYPE	CONSTRUCTION	MOUNTING	LIGHT SOURCE				ELECTRICAL			PRODUCT	
			LAMP	CCT	CRI	VOLT	WATTS	WIR	EMERGENCY COMPONENT	MFR	Model
B1	EXISTING LINEAR PENDANT, RELOCATED	SUSPENDED	LED	3500 K	82	277 V	15 W	--	--	EXISTING	
D1	BOLLARD	GROUND	LED	4000 K	70	277 V	22 W	--	--	WE-EF PS1424 LED	
D1	6" DOWNLIGHT	RECESSED	LED	3500 K	80	277 V	12 W	--	--	PRESCOLITE LTR GRD	
D1E	6" DOWNLIGHT, EMERGENCY BATTERY	RECESSED	LED	3500 K	80	277 V	12 W	--	BATTERY	PRESCOLITE LTR GRD	
D2	6" DOWNLIGHT	RECESSED	LED	3500 K	80	277 V	12 W	--	--	SPECTRUM LIGHTING 6" ROUND DOWNLIGHT	
D2E	6" DOWNLIGHT, EMERGENCY BATTERY	RECESSED	LED	3500 K	80	277 V	12 W	--	BATTERY	SPECTRUM LIGHTING 6" ROUND DOWNLIGHT	
D3	6" ROUND WALL WASH	RECESSED	LED	3500 K	80	277 V	12 W	--	--	PRESCOLITE BRW OPEN WW	
E1	ELI INDOOR, TWO HEAD	SURFACE WALL	LED	6500 K	80	277 V	3 W	--	BATTERY	DUAL LITE 2.2	
G1	6" STRIP LIGHT	SURFACE	LED	3500 K	82	277 V	15 W	--	--	COLUMBIA CSL	
P1	6" LINEAR PENDANT, DI	PENDANT	LED	3500 K	80	277 V	38 W	--	--	ALL 3SD	
P1E	6" LINEAR PENDANT, DI, EMERGENCY BATTERY	PENDANT	LED	3500 K	80	277 V	38 W	--	BATTERY	ALL 3SD	
P2	16" GLOBE PENDANT, CORD MOUNT	SUSPENDED	LED	3500 K	80	277 V	19 W	--	--	BARN LIGHT ELECTRIC GLASS BALL PENDANT	
P3	12" LINEAR PENDANT, DI	PENDANT	LED	3500 K	80	277 V	38 W	--	--	ALL 3SD	
P3E	12" LINEAR PENDANT, DI, EMERGENCY BATTERY	PENDANT	LED	3500 K	80	277 V	38 W	--	BATTERY	ALL 3SD	
R1	6" LINEAR RECESSED, GRID	GRID	LED	3500 K	82	277 V	15 W	--	--	ALW SUPERPLANE 2 SR	
R1E	6" LINEAR RECESSED, GRID, EMERGENCY BATTERY	GRID	LED	3500 K	82	277 V	15 W	--	BATTERY	ALW SUPERPLANE 2 SR	
R2	TAPE LIGHT IN CHASIS 132 DEG. EXTRUSION	CEILING SURFACE	LED	3500 K	80	277 V	33 W	3	--	ACOLYTE CHASIS CHANNEL	
R3E	6" LINEAR RECESSED, GYP, BATTERY	GYP	LED	3500 K	82	277 V	15 W	--	BATTERY	ALW SUPERPLANE 2 SR	
S1	STEP LIGHT	RECESSED WALL HORIZONTAL	LED	3500 K	80	277 V	15 W	--	--	MP LIGHTING L70	
T1	COVE LIGHT	SURFACE	LED	3500 K	80	277 V	10WFT	--	--	LITECONTROL SAE 201	
U1	INGRADE UPLIGHT/TREE LIGHT	GRADE ANCHOR	LED	4000 K	80	277 V	12 W	--	--	HICHLER C-SERIES	
UC1	TAPE LIGHT INSURFACE MOUNT EXTRUSION, SWIFT	CEILING SURFACE	LED	3500 K	80	277 V	varies	3	--	ACOLYTE AS1 CHANNEL	
V1	4" VANITY FIXTURE	WALL	LED	3500 K	82	277 V	15 W	--	--	BROWNLEE FLOW SQ	
WP1	EXTERIOR WALL PACK	WALL	LED	3000 K	70	277 V	39 W	--	--	KIM LIGHTING WDS	
WPIE	EXTERIOR WALL PACK, EMERGENCY BATTERY	WALL	LED	3000 K	70	277 V	39 W	--	BATTERY	KIM LIGHTING WDS	
X1	EXIT SIGN, UNV FACE, UNV CHEVRON, UNV MOUNT, ALUMINUM	UNV	LED	0K	0	277 V	5 W	--	BATTERY	ISOLITE EDC	

- KEYNOTES**
- UTILIZE SPACE IN EXISTING LIGHTING CONTROL PANEL HLC. ALL FIXTURES INDICATED WITH KEYNOTE #1 ARE CIRCUITED AND CONTROLLED TOGETHER.
 - UTILIZE SPACE IN EXISTING LIGHTING CONTROL PANEL HLC. ALL FIXTURES INDICATED WITH KEYNOTE #2 ARE CIRCUITED AND CONTROLLED TOGETHER.
 - UTILIZE SPACE IN EXISTING LIGHTING CONTROL PANEL HLC. ALL FIXTURES INDICATED WITH KEYNOTE #3 ARE CIRCUITED AND CONTROLLED TOGETHER.
 - UTILIZE SPACE IN EXISTING LIGHTING CONTROL PANEL HLC. ALL FIXTURES INDICATED WITH KEYNOTE #4 ARE CIRCUITED AND CONTROLLED TOGETHER.
 - ROOM CONTROLLER: PROVIDE WATT STOPPER 1-LMRC-213 ROOM CONTROLLER AND WATT STOPPER 1-LMSW-105 SCENE SWITCH.
 - PROVIDE DUAL LITE PLD910M EMERGENCY BATTERY FOR 90MIN OF EMERGENCY OPERATION OF FIXTURE.
 - PROVIDE BLACK SWITCHES AND COVER PLATES THIS ROOM.
 - PROVIDE TILTABLE STAND ACCESSORY FOR UC1 FIXTURE AT PUPPET ROOM WINDOW.



1 LIGHTING PLAN - ADDITION
E202 1/8" = 1'-0"



MSRDesign
 510 Marquette Avenue South, Suite 200
 Minneapolis, MN 55402 | 612.375.0336

PROJECT NO. 212063R
 100% COMPLETE
 5504 W Pinnacle Pointe Dr
 Suite 200
 Rogers, AR
 TEL 479-899-6370
 http://www.hpengineeringinc.com

CONSULTANT:
 HP ENGINEERING, INC.
 #1653
 ARKANSAS - ENGINEER

3100 S Market St #202
 Rogers, AR 72758 | 479.621.6128

MEP Engineer

HP Engineering, Inc.
 5504 W Pinnacle Pointe Dr. Ste. 200
 Rogers, AR 72758 | 479.899.6370

Architecture and Interiors

MSRDesign
 510 Marquette Avenue South, Suite 200
 Minneapolis, MN 55402 | 612.375.0336

Associate Architect

Hight Jackson Associates PA
 5201 W Village Pkwy #300
 Rogers, AR 72758 | 479.464.4965

Civil Engineer

E | D | G
 216 West Birch Street
 Rogers, AR 72758 | 501.378.0200

Landscape Architect

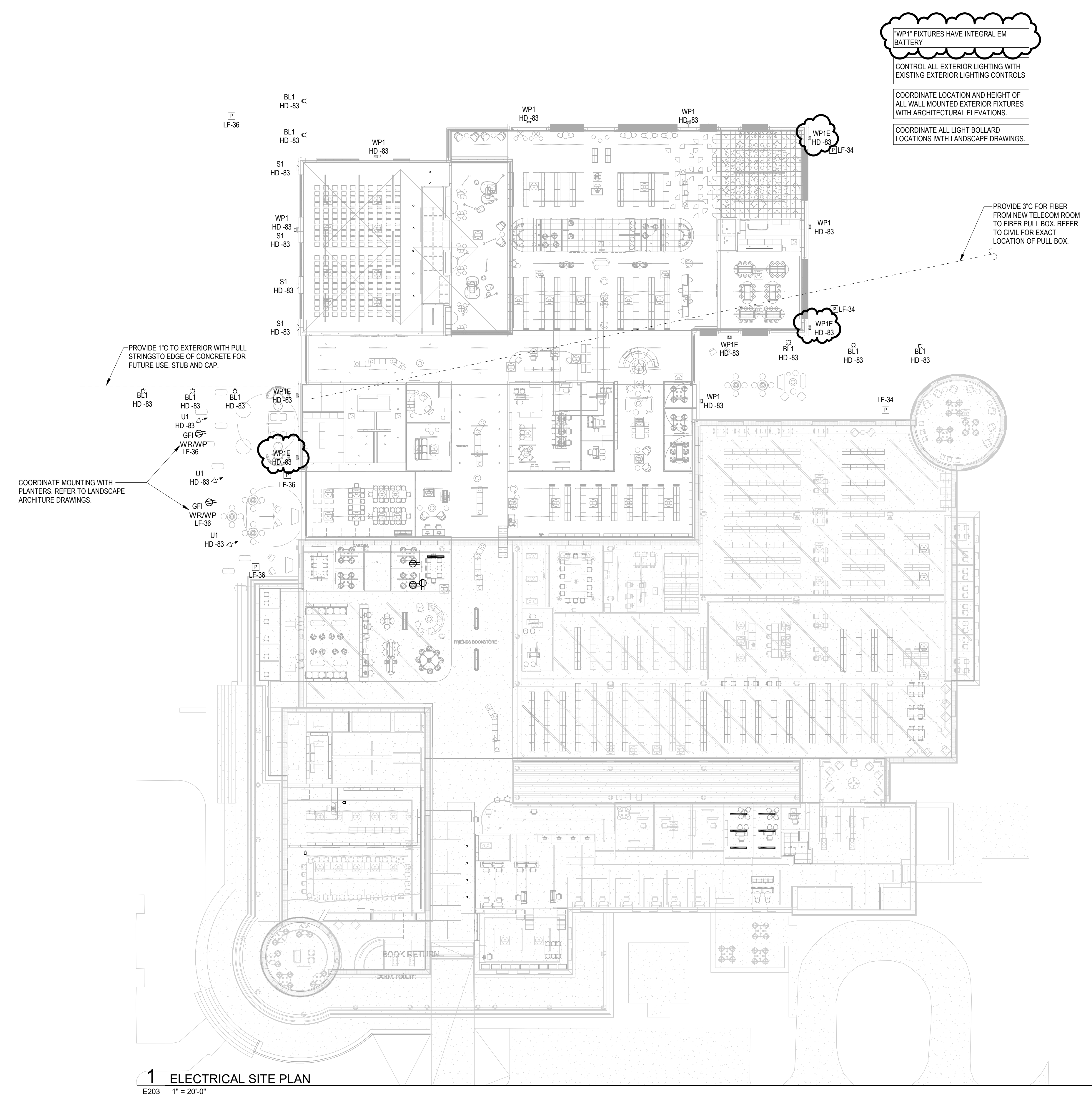
TEN x TEN
 575 SE 9th St #210
 Minneapolis, MN 55414 | 612.440.8369

Structural Engineer

3100 S Market St #202
 Rogers, AR 72758 | 479.621.6128

MEP Engineer

HP Engineering, Inc.
 5504 W Pinnacle Pointe Dr. Ste. 200
 Rogers, AR 72758 | 479.899.6370



1 ELECTRICAL SITE PLAN
 E203 1" = 20'-0"

Project No. 2021037

Bentonville Public Library Expansion
 405 S Main Street
 Bentonville, AR 72712

Engineer Seal

STATE OF ARKANSAS
 LICENSED PROFESSIONAL ENGINEER
 No. 21009
 CLIFTON P. BURDETTE

Signature *Clifton Burdette*

Print Name Clifton Burdette

Date 1/18/2023 License No. 21009

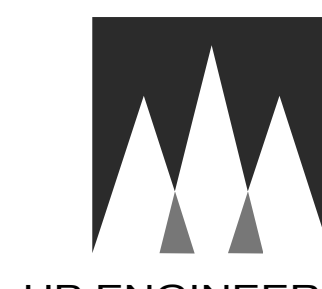
BID SET

ISSUE / REVISION

Mark	Date	Description
	12/16/2021	SCHEMATIC DESIGN PRICING
	6/22/2022	DESIGN DEVELOPMENT PRICING
	8/1/2022	DD VE OPTION B
	10/13/2022	PRE APP SET
	10/28/2022	LARGE SCALE DEVELOPMENT SUBMITTAL
	10/31/2022	CD PRICING SET
	11/14/2022	SECOND LSD SUBMITTAL
	11/28/2022	THIRD LSD SUBMITTAL
	12/21/2022	PERMIT SET
	1/6/2023	BID SET
	1/18/2023	ADDENDUM #1
	1/19/2023	ADDENDUM #2
	3/22/2023	ASH-01

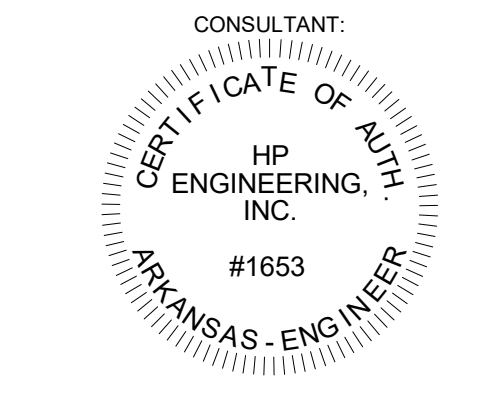
SITE ELECTRICAL PLAN

E203



HP ENGINEERING

PROJECT NO. 212063R
100% COMPLETE
5504 W Pinnacle Pointe Dr
Suite 200
Rogers, AR
TEL 479-899-6370
http://www.hpengineeringinc.com



Architecture and Interiors

MSRDesign
510 Marquette Avenue South, Suite 200
Minneapolis, MN 55402 | 612.375.0336

Associate Architect

Hight Jackson Associates PA
5201 W Village Pkwy #300
Rogers, AR 72758 | 479.464.4965

Civil Engineer

E | D | G

216 West Birch Street
Rogers, AR 72758 | 501.378.0200

Landscape Architect

TEN x TEN

575 SE 9th St #210
Minneapolis, MN 55414 | 612.440.8369

Structural Engineer

3100 S Market St #202
Rogers, AR 72758 | 479.621.6128

MEP Engineer

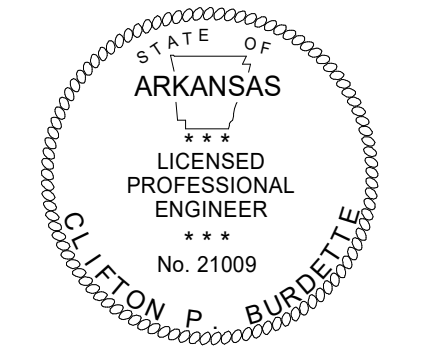
HP Engineering, Inc.

5504 W Pinnacle Pointe Dr, Ste. 200
Rogers, AR 72758 | 479.899.6370

Project No. 2021037

Bentonville Public Library
Expansion
405 S Main Street
Bentonville, AR 72712

Engineer Seal



Signature: *Silvestro Burdette*

Print Name
Date: 1/6/2023 License No.

BID SET

ISSUE / REVISION

Mark	Date	Description
12/10/2021	12/10/2021	SCHEMATIC DESIGN PRICING
06/22/2022	06/22/2022	DESIGN DEVELOPMENT PRICING
8/1/2022	8/1/2022	DD VE OPTION B
10/13/2022	10/13/2022	PRE APP SET
10/28/2022	10/28/2022	LARGE SCALE DEVELOPMENT SUBMITTAL
10/31/2022	10/31/2022	CD PRICING SET
11/14/2022	11/14/2022	SECOND LSD SUBMITTAL
11/28/2022	11/28/2022	THIRD LSD SUBMITTAL
12/21/2022	12/21/2022	PERMIT SET
1/6/2023	1/6/2023	BID SET

HP Engineering, Inc.

FIRE ALARM DETAILS AND NOTES

E400

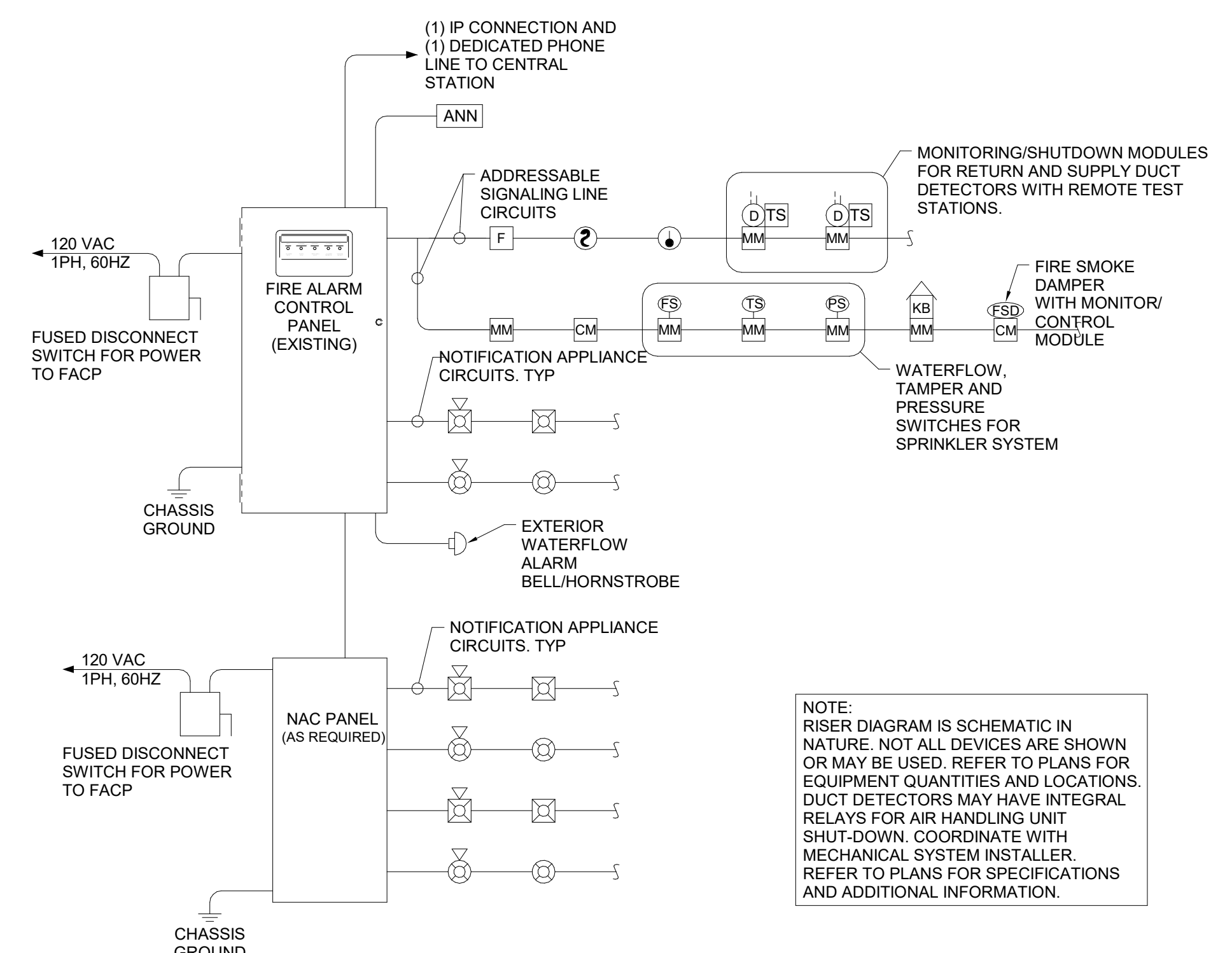
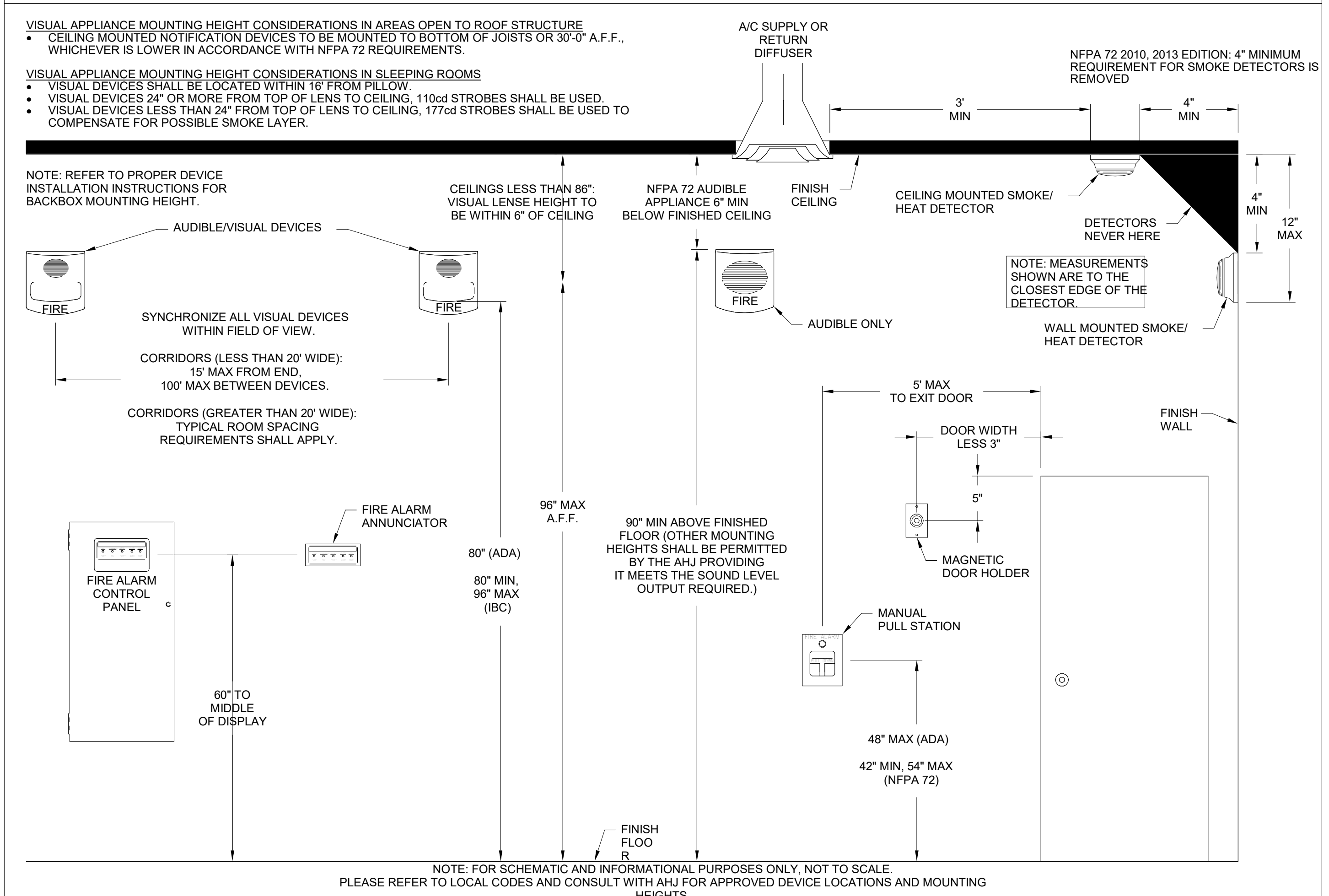
FIRE ALARM INSTALLATION NOTES

- SYSTEM SHALL BE INSTALLED IN CONFORMANCE WITH NFPA 72 AND LOCAL CODES AND REGULATIONS. ALL EQUIPMENT AND MATERIALS SHALL BE UL LISTED AND APPROVED BY THE AUTHORITY HAVING JURISDICTION.
- INTERFACE WITH AND MONITOR ALL FIRE SUPPRESSION SYSTEM DEVICES INCLUDING (BUT NOT LIMITED TO) SPRINKLER FLOW AND TAMPER SWITCHES.
- WIRE AND CABLE SHALL BE UL LISTED AND LABELED AS COMPLYING WITH NFPA 70, ARTICLE 760. SIGNALING LINE CIRCUITS TO BE TWISTED, SHIELDED PAIR, SIZED AS RECOMMENDED BY SYSTEM MANUFACTURER. NON-POWER-LIMITED CIRCUITS TO BE SOLID-COPPER CONDUCTORS WITH 600-V RATED, 75 DEG C, COLOR-CODED INSULATION.
S 1 LOW-VOLTAGE CIRCUITS: NO. 16 AWG, MINIMUM
S 2 LINE-VOLTAGE CIRCUITS: NO. 12 AWG, MINIMUM
- INSTALL AND TEST SYSTEMS ACCORDING TO NFPA 72, COMPLY WITH NECA 1
- TEST ALL SYSTEM DEVICES FOR PROPER OPERATION IN THE PRESENCE OF THE AHU AND OTHER OFFICIALS INSPECTING THE FIRE ALARM SYSTEM.
- IF REQUIRED BY THE LOCAL AHU EQUIPMENT DATA SHEETS AND BATTERY CALCULATIONS IN ACCEPTANCE WITH NFPA 72 SHALL BE PERFORMED BY THE FIRE ALARM SYSTEM MANUFACTURER/INSTALLER TO MATCH EQUIPMENT TO BE INSTALLED.
- SYSTEM INSTALLER SHALL BE A LICENSED FIRE ALARM CONTRACTOR IN THE RESPECTIVE STATE OF THIS PROJECT.
- FIRE ALARM CONTROL PANEL SHALL BE MODULAR, POWER-LIMITED DESIGN WITH ELECTRONIC MODULES, UL 804 LISTED, AND DESIGNED TO TRANSMIT ALARM, TROUBLE, AND SUPERVISORY SIGNALS TO A UL LISTED CENTRAL STATION THROUGH A DIGITAL ALARM COMMUNICATOR TRANSMITTER WITH (1) ETHERNET PORT CONNECTION AND (1) DEDICATED TELEPHONE LINE.
- PROVIDE 120VAC POWER THROUGH DEDICATED LOCKING BREAKER AT POWER PANEL.
- GROUND THE FACP AND ALL ASSOCIATED CIRCUITS.
- INSTALL A #6 AWG GROUND WIRE FROM THE TELE-COMMUNICATIONS EQUIPMENT GROUNDING POINT TO THE FACP.
- SYSTEM SHALL INCLUDE 24V DC POWER SYSTEM WITH SEALED LEAD CALCIUM BATTERIES AND AUTOMATIC BATTERY CHARGER IN ACCORDANCE WITH NFPA 72.
- PROVIDE (1) IP CONNECTION TO CUSTOMERS INTERNET NETWORK AND (1) DEDICATED TELEPHONE LINE TERMINATED WITH (1) RJ-31X MODULAR OUTLET AT DUCT LOCATION.

FIRE ALARM GENERAL NOTES

- FIRE ALARM SYSTEM DESIGN, INSTALLATION AND MATERIALS SHALL BE IN ACCORDANCE WITH NFPA 70 AND NFPA 72. SYSTEM SHALL ALSO MEET ALL APPLICABLE BUILDING CODES, FIRE CODES AND THE REQUIREMENTS OF THE AUTHORITY HAVING JURISDICTION AND INSURANCE CARRIER. VERIFY REQUIREMENTS PRIOR TO BID SUBMITTAL.
- INFORMATION ON CONTRACT DOCUMENTS IS GENERAL INFORMATION AND FOR BID PURPOSES ONLY. PERFORM REQUIRED CALCULATIONS AND COORDINATE WITH OTHER TRADES. DEVIATIONS FROM ENGINEERS LAYOUT WILL NOT BE CONSIDERED UNLESS A FORMALLY SUBMITTED RFI IS RECEIVED AND APPROVED.
- PROVIDE ADDITIONAL MATERIALS AND LABOR REQUIRED DUE TO LACK OF COORDINATION OR TO MEET AUTHORITY HAVING JURISDICTION AND INSURANCE CARRIER REQUIREMENTS AT NO ADDITIONAL COST TO THE OWNER.
- PROVIDE ALL EQUIPMENT AND LABOR REQUIRED FOR A COMPLETE AND OPERATIONAL FIRE ALARM SYSTEM.
- AUDIBLE NOTIFICATION DEVICES SHALL SOUND UNTIL SILENCED AT THE CONTROL PANEL OR REMOTE ANNUNCIATOR AS REQUIRED. VISUAL ALARM IS DISPLAYED UNTIL DEVICE IS RETURNED TO ITS NORMAL POSITION OR SUPERVISORY CONDITION IS CLEARED.
- FORWARD COMPLETED FIRE ALARM CERTIFICATE OF COMPLETION TO THE OWNER.
- REFER TO SPECIFICATIONS FOR ADDITIONAL INFORMATION.
- PROVIDE CONNECTION TO EXTERIOR WATERFLOW ALARM BELL AS REQUIRED.
- PROVIDE NOTIFICATION, INITIATING AND MONITORING DEVICES AS INDICATED ON THE DRAWINGS. FIRE ALARM DEVICES SHALL BE OF ONE MANUFACTURER AND SHALL BE LISTED FOR USE WITH THE FIRE ALARM CONTROL PANEL.
- PROVIDE NOTIFICATION APPLIANCE CIRCUIT PANEL(S) TO POWER NOTIFICATION DEVICES AS REQUIRED. CONNECT TO FIRE ALARM SYSTEM.
- THE FIRE ALARM CONTROL PANEL AND REMOTE ANNUNCIATOR LOCATIONS SHOWN SHALL BE COORDINATED WITH THE FIRE DEPARTMENT AND AHU PRIOR TO INSTALLATION.
- PROVIDE DEDICATED CONNECTION OF THE FIRE ALARM SYSTEM TO A UL LISTED CENTRAL STATION.
- PROVIDE KNOX BOX FOR FIRE DEPARTMENT ACCESS. CONNECT TAMPER SWITCH TO FIRE ALARM SYSTEM AS REQUIRED.
- AIR HANDLING SYSTEMS THAT ARE MONITORED SHALL SHUTDOWN AND REMAIN DOWN UNTIL MANUALLY RESET.
- ROOF TOP AIR DISTRIBUTION SYSTEMS EXCEEDING 2,000 CFM: PROVIDE DUCT MOUNTED SMOKE DETECTORS FOR AIR HANDLING UNIT SHUTDOWN AND INSTALL PER MANUFACTURER'S RECOMMENDATIONS. PROVIDE MONITOR MODULE FOR SUPPLY AIR DUCT DETECTOR AND RELAY/MONITOR MODULE FOR RETURN AIR DUCT DETECTOR. REFER TO MECHANICAL SHEETS FOR AIR HANDLING UNIT AND DUCTWORK LAYOUT AND DETAILS.
- PROVIDE DUCT MOUNTED SMOKE DETECTORS FOR SMOKE DAMPER AND FIRE/SMOKE DAMPER OPERATION AND INSTALL PER MANUFACTURER'S RECOMMENDATIONS. PROVIDE RELAY/MONITOR MODULE FOR DUCT DETECTOR. REFER TO MECHANICAL DOCUMENTS FOR DAMPER LOCATION AND REQUIREMENTS.
- DUCT SMOKE DETECTION SHALL TRANSMIT A SUPERVISORY SIGNAL TO THE FACP.

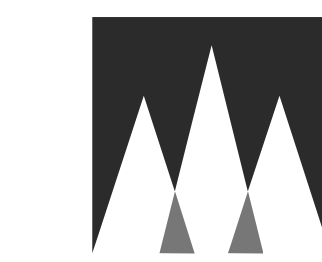
FIRE ALARM DEVICE MOUNTING HEIGHTS (PER NFPA 72)



2 DETAIL
NTS

1 DETAIL
NTS

Vertical text on the left edge of the page, likely a project or drawing ID.



MSRDesign
 510 Marquette Avenue South, Suite 200
 Minneapolis, MN 55402 | 612.375.0336

Associate Architect

Hight Jackson Associates PA
 5201 W Village Pkwy #300
 Rogers, AR 72758 | 479.464.4965

Civil Engineer

E | D | G
 216 West Birch Street
 Rogers, AR 72758 | 501.378.0200

Landscape Architect

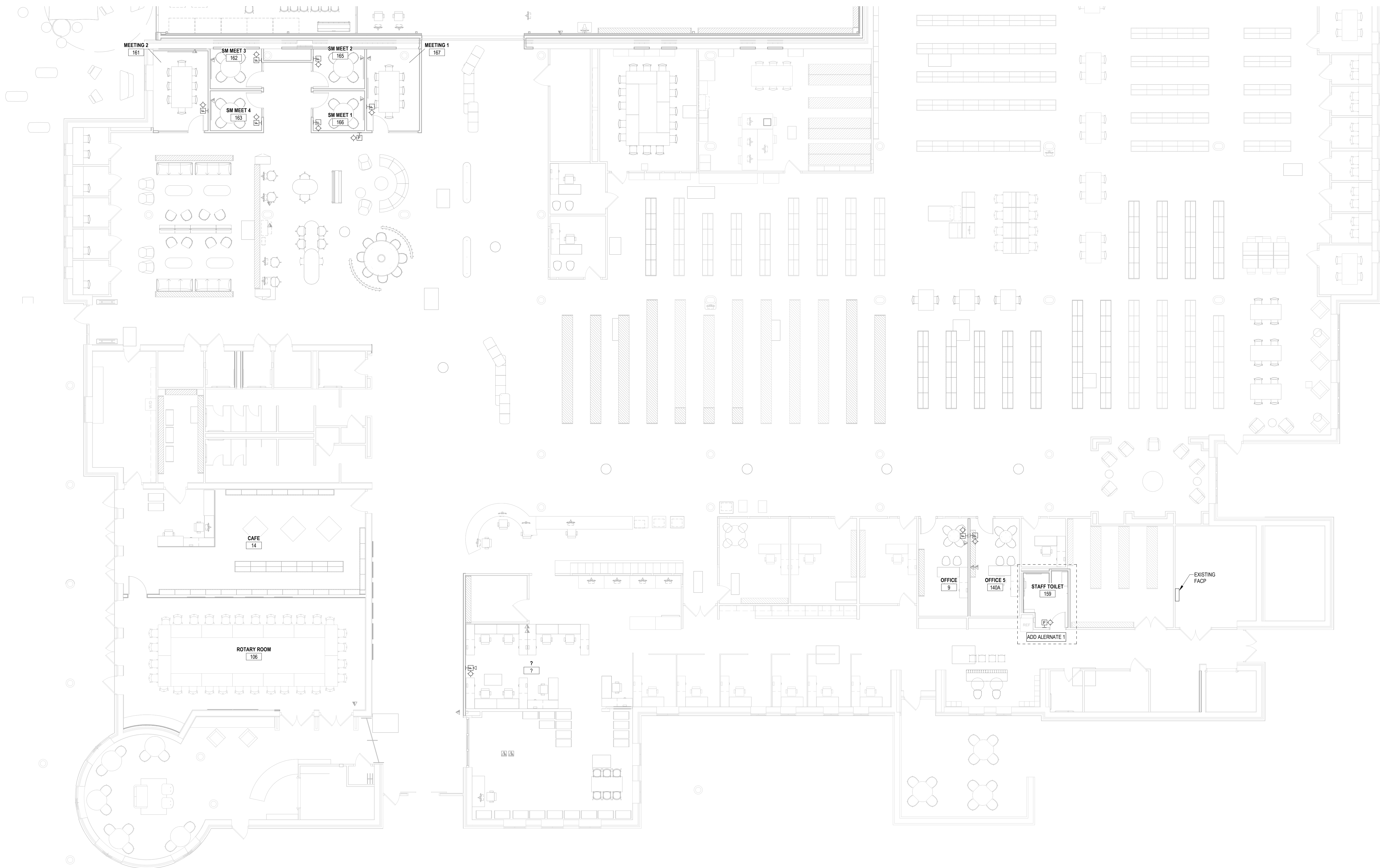
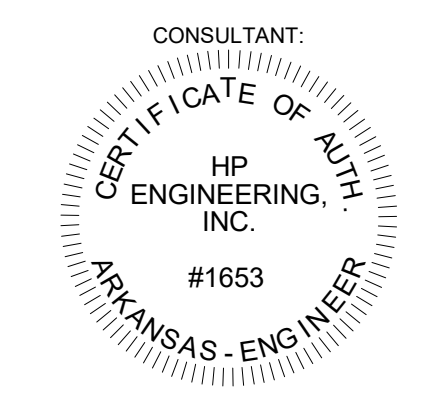
TEN x TEN
 575 SE 9th St #210
 Minneapolis, MN 55414 | 612.440.8369

Structural Engineer

3100 S Market St #202
 Rogers, AR 72758 | 479.621.6128

MEP Engineer

HP Engineering, Inc.
 5504 W Pinnacle Point Dr. Ste. 200
 Rogers, AR 72758 | 479.899.6370



1 FIRE ALARM PLAN - EXISTING
 E401 1/8" = 1'-0"

Architecture and Interiors

MSRDesign
 510 Marquette Avenue South, Suite 200
 Minneapolis, MN 55402 | 612.375.0336

Associate Architect

Hight Jackson Associates PA
 5201 W Village Pkwy #300
 Rogers, AR 72758 | 479.464.4965

Civil Engineer

E | D | G
 216 West Birch Street
 Rogers, AR 72758 | 501.378.0200

Landscape Architect

TEN x TEN
 575 SE 9th St #210
 Minneapolis, MN 55414 | 612.440.8369

Structural Engineer

3100 S Market St #202
 Rogers, AR 72758 | 479.621.6128

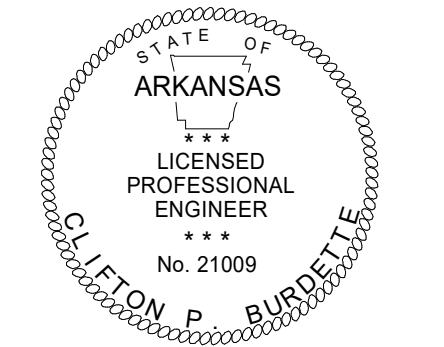
MEP Engineer

HP Engineering, Inc.
 5504 W Pinnacle Point Dr. Ste. 200
 Rogers, AR 72758 | 479.899.6370

Project No. 2021037

**Bentonville Public Library
 Expansion**
 405 S Main Street
 Bentonville, AR 72712

Engineer Seal



Signature *Silvestro Burdette*

Print Name
 Date 1/6/2023 License No.

BID SET

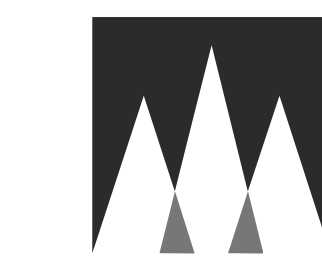
ISSUE / REVISION

Mark	Date	Description
12/16/2021	12/16/2021	SCHEMATIC DESIGN PRICING
06/22/2022	06/22/2022	DESIGN DEVELOPMENT PRICING
8/1/2022	8/1/2022	DD VE OPTION B
10/13/2022	10/13/2022	PRE APP SET
10/28/2022	10/28/2022	LARGE SCALE DEVELOPMENT SUBMITTAL
10/31/2022	10/31/2022	CD PRICING SET
11/14/2022	11/14/2022	SECOND LSD SUBMITTAL
11/28/2022	11/28/2022	THIRD LSD SUBMITTAL
12/21/2022	12/21/2022	PERMIT SET
1/6/2023	1/6/2023	BID SET

© 2023 MSRDesign, Inc. All Rights Reserved.

FIRE ALARM PLAN - EXISTING

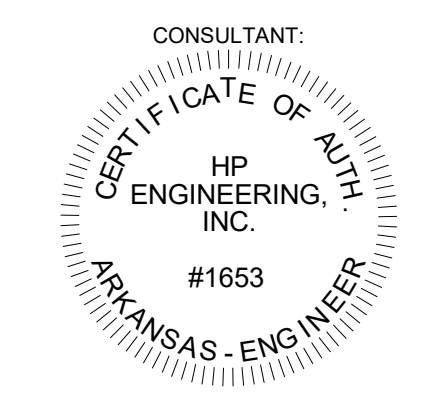
E401



HP ENGINEERING

PROJECT NO. 212063R
100% COMPLETE

5504 W Pinnacle Pointe Dr
Suite 200
Rogers, AR
TEL 479-899-6370
http://www.hpengineeringinc.com



Associate Architect

Hight Jackson Associates PA
5201 W Village Pkwy #300
Rogers, AR 72758 | 479-464-4965

Civil Engineer

E | D | G
216 West Birch Street
Rogers, AR 72758 | 501.378.0200

Landscape Architect

TEN x TEN
575 SE 9th St #210
Minneapolis, MN 55414 | 612.440.8369

Structural Engineer

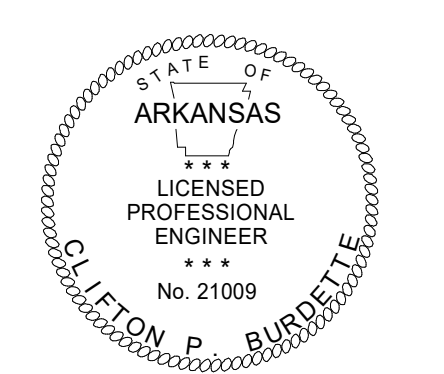
3100 S Market St #202
Rogers, AR 72758 | 479.621.6128

MEP Engineer

HP Engineering, Inc.
5504 W Pinnacle Pointe Dr. Ste. 200
Rogers, AR 72758 | 479.899.6370

Project No. 2021037
**Bentonville Public Library
Expansion**
405 S Main Street
Bentonville, AR 72712

Engineer Seal



Signature *Clayton Burdette*
Print Name
Date 1/6/2023 License No.

BID SET

ISSUE / REVISION

Mark	Date	Description
	12/16/2021	SCHEMATIC DESIGN PRICING
	06/22/2022	DESIGN DEVELOPMENT PRICING
	8/12/2022	DD VE OPTION B
	10/13/2022	PRE APP SET
	10/28/2022	LARGE SCALE DEVELOPMENT SUBMITTAL
	10/31/2022	CD PRICING SET
	11/14/2022	SECOND LSD SUBMITTAL
	11/28/2022	THIRD LSD SUBMITTAL
	12/21/2022	PERMIT SET
	1/6/2023	BID SET

HP Engineering, Inc.

FIRE ALARM PLAN - ADDITION

E402



1 FIRE ALARM PLAN - ADDITION
E402 1/8" = 1'-0"



HP ENGINEERING

PROJECT NO. 212063R
100% COMPLETE

5504 W Pinnacle Pointe Dr
Suite 200

Rogers, AR

TEL 479-899-6370

http://www.hpengineeringinc.com

CONSULTANT:

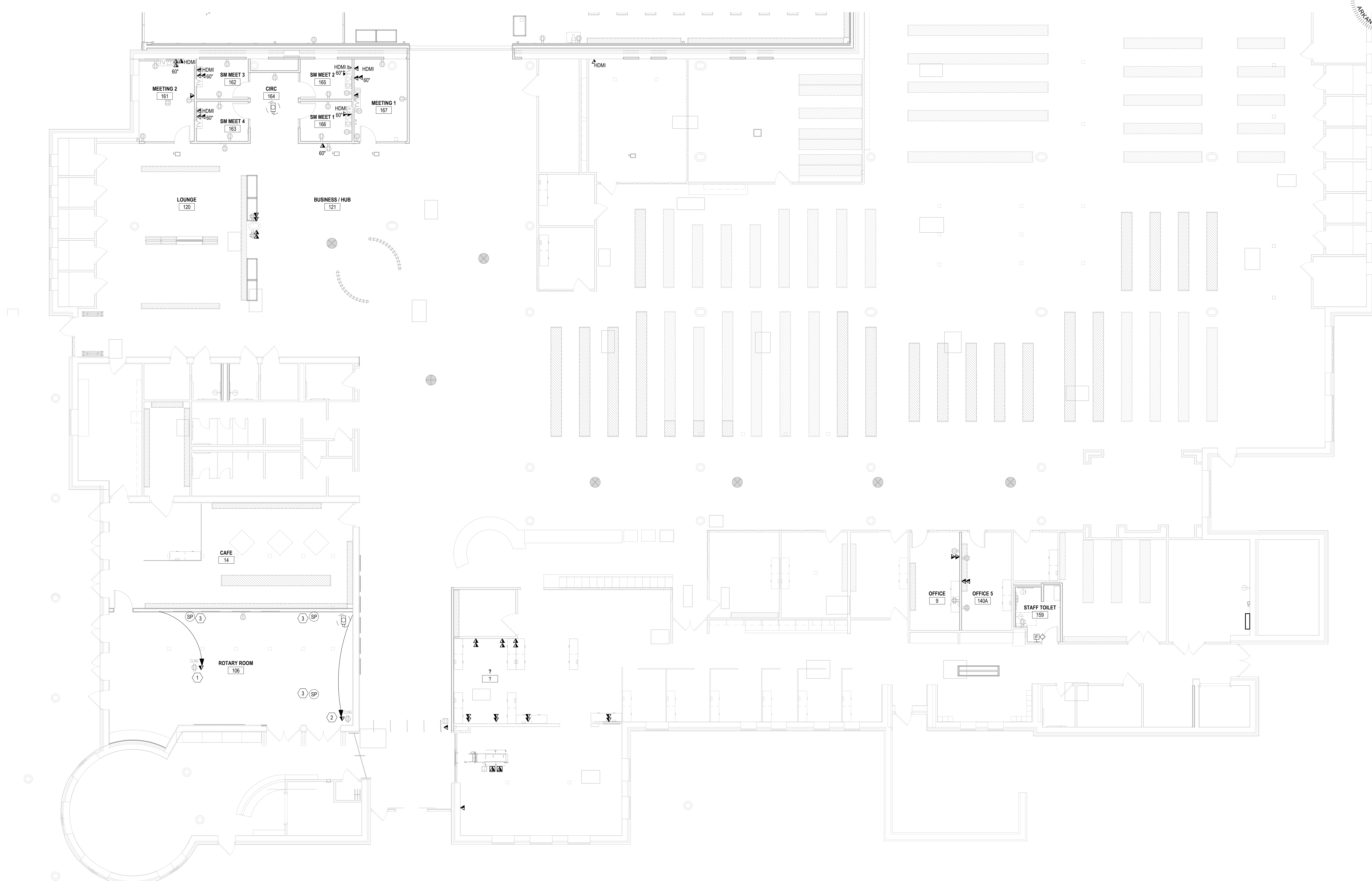
HP ENGINEERING, INC.

#1653

ARKANSAS - ENGINEER

KEYNOTES
1 RELOCATE DATA FOR EXISTING PROJECTOR TO CEILING AS SHOWN
2 RELOCATE DATA FOR EXISTING SCREEN TO CEILING AS SHOWN
3 RELOCATE BACKBOXES FOR EXISTING SPEAKERS. VERIFY EXACT LOCATION WITH OWNER/ARCHITECT/CITY OF BENTONVILLE PRIOR TO ROUGH-IN.

SYSTEM PLAN NOTES
PROVIDE 1" C WITH PULL STRINGS OVERHEAD FROM EXISTING PHONE BOARD TO C38 IT 219.



1 SYSTEMS PLAN - EXISTING
E403 1/8" = 1'-0"

**Bentonville Public Library
Expansion**
405 S Main Street
Bentonville, AR 72712

Project No. 2021037

Engineer Seal



Signature *C. Burton Burdette*

Print Name

Date 1/6/2023 License No.

BID SET

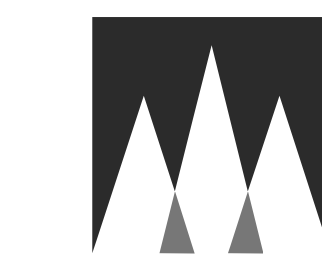
ISSUE / REVISION

Mark	Date	Description
12/16/2021	12/16/2021	SCHEMATIC DESIGN PRICING
06/22/2022	06/22/2022	DESIGN DEVELOPMENT PRICING
8/1/2022	8/1/2022	DD VE OPTION B
10/13/2022	10/13/2022	PRE APP SET
10/28/2022	10/28/2022	LARGE SCALE DEVELOPMENT SUBMITTAL
10/31/2022	10/31/2022	CD PRICING SET
11/14/2022	11/14/2022	SECOND LSD SUBMITTAL
11/28/2022	11/28/2022	THIRD LSD SUBMITTAL
12/21/2022	12/21/2022	PERMIT SET
1/6/2023	1/6/2023	BID SET

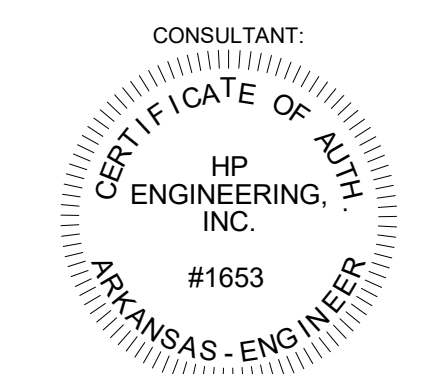
© 2023 MSRDesign, Inc. All rights reserved.

SYSTEMS PLAN -
EXISTING

E403



HP ENGINEERING
 PROJECT NO. 212063R
 100% COMPLETE
 5504 W Pinnacle Pointe Dr
 Suite 200
 Rogers, AR
 TEL 479-899-6370
 http://www.hpengineeringinc.com



Architecture and Interiors
MSRDesign
 510 Marquette Avenue South, Suite 200
 Minneapolis, MN 55402 | 612.375.0336

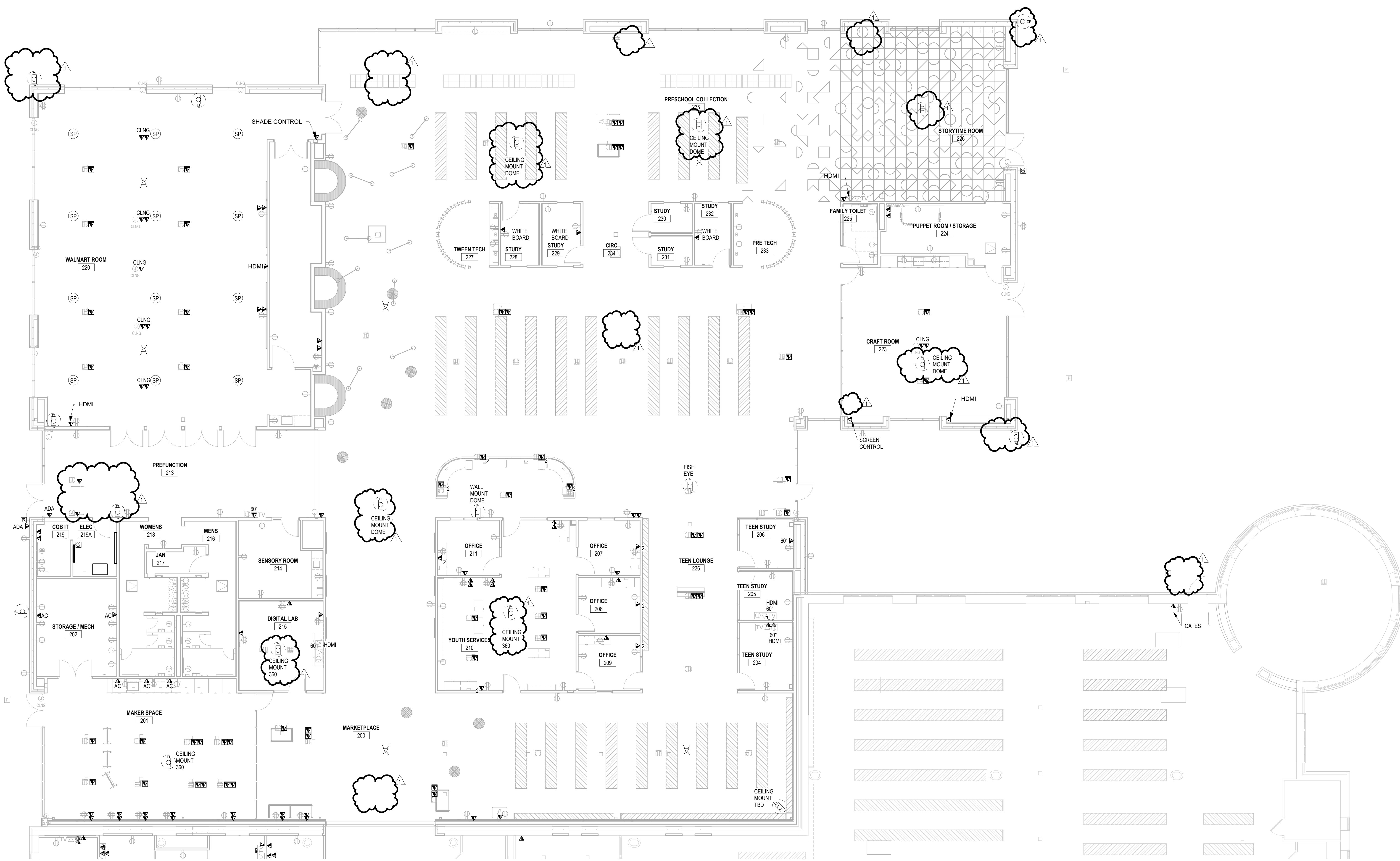
Associate Architect
Hight Jackson Associates PA
 5201 W Village Pkwy #300
 Rogers, AR 72758 | 479.464.4965

Civil Engineer
E | D | G
 216 West Birch Street
 Rogers, AR 72758 | 501.378.0200

Landscape Architect
TEN x TEN
 575 SE 9th St #210
 Minneapolis, MN 55414 | 612.440.8369

Structural Engineer
 3100 S Market St #202
 Rogers, AR 72758 | 479.621.6128

MEP Engineer
HP Engineering, Inc.
 5504 W Pinnacle Pointe Dr. Ste. 200
 Rogers, AR 72758 | 479.899.6370



1 SYSTEMS PLAN - ADDITION
 E404 1/8" = 1'-0"

Project No. 2021037

Bentonville Public Library Expansion

405 S Main Street
 Bentonville, AR 72712

Engineer Seal

 Signature: *G. L. Burdette*
 Print Name: _____
 Date: 1/18/2023 License No. _____

BID SET

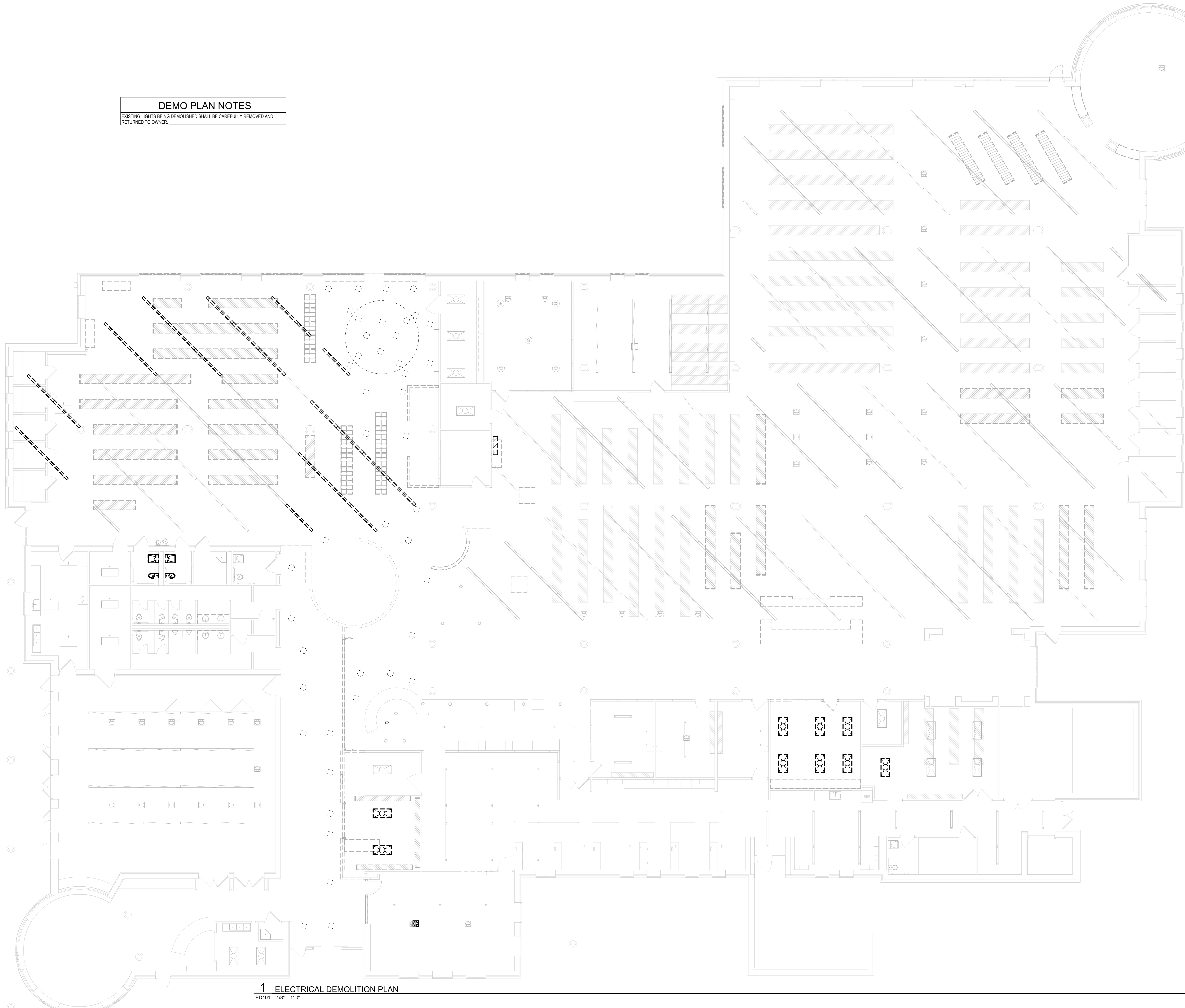
ISSUE / REVISION

Mark	Date	Description
	12/10/2021	SCHEMATIC DESIGN PRICING
	06/22/2022	DESIGN DEVELOPMENT PRICING
	8/1/2022	DD VE OPTION B
	10/13/2022	PRE APP SET
	10/28/2022	LARGE SCALE DEVELOPMENT SUBMITTAL
	10/31/2022	CD PRICING SET
	11/14/2022	SECOND LSD SUBMITTAL
	11/28/2022	THIRD LSD SUBMITTAL
	12/21/2022	PERMIT SET
	1/8/2023	BID SET
1	1/18/2023	ADDENDUM #1

SYSTEMS PLAN - ADDITION

E404

DEMO PLAN NOTES
 EXISTING LIGHTS BEING DEMOLISHED SHALL BE CAREFULLY REMOVED AND RETURNED TO OWNER.



1 ELECTRICAL DEMOLITION PLAN
 ED101 1/8" = 1'-0"

MSRDesign
 510 Marquette Avenue South, Suite 200
 Minneapolis, MN 55402 | 612.375.0336

HP ENGINEERING
 PROJECT NO. 212063R
 100% COMPLETE
 5504 W Pinnacle Pointe Dr
 Suite 200
 Rogers, AR
 TEL 479-899-6370
 http://www.hpengineeringinc.com

CONSULTANT:
 CERTIFICATE OF AUTHORITY
 HP ENGINEERING, INC.
 #1653
 ARKANSAS - ENGINEER

Architecture and Interiors

MSRDesign
 510 Marquette Avenue South, Suite 200
 Minneapolis, MN 55402 | 612.375.0336

Associate Architect

Hight Jackson Associates PA
 5201 W Village Pkwy #300
 Rogers, AR 72758 | 479.464.4965

Civil Engineer

E | D | G
 216 West Birch Street
 Rogers, AR 72756 | 501.378.0200

Landscape Architect

TEN x TEN
 575 SE 9th St #210
 Minneapolis, MN 55414 | 612.440.8369

Structural Engineer

3100 S Market St #202
 Rogers, AR 72758 | 479.621.6128

MEP Engineer

HP Engineering, Inc.
 5504 W Pinnacle Pointe Dr. Ste. 200
 Rogers, AR 72758 | 479.899.6370

Project No. 2021037

**Bentonville Public Library
 Expansion**
 405 S Main Street
 Bentonville, AR 72712

Engineer Seal

Signature *G. Preston Burdette*

Print Name _____

Date 1/6/2023 License No. _____

BID SET

ISSUE / REVISION

Mark	Date	Description
	12/16/2021	SCHEMATIC DESIGN PRICING
	06/22/2022	DESIGN DEVELOPMENT PRICING
	8/12/2022	DD VE OPTION B
	10/13/2022	PRE APP SET
	10/28/2022	LARGE SCALE DEVELOPMENT SUBMITTAL
	10/31/2022	CD PRICING SET
	11/14/2022	SECOND LSD SUBMITTAL
	11/28/2022	THIRD LSD SUBMITTAL
	12/21/2022	PERMIT SET
	1/6/2023	BID SET