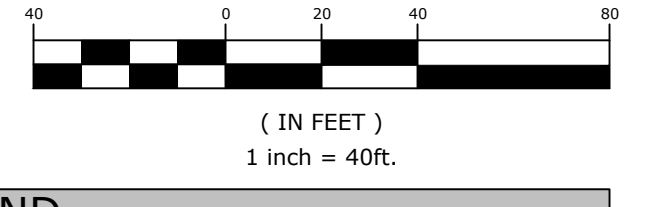


NOTE TO CONTRACTOR: PLEASE REFER TO ARCHITECT / LANDSCAPE ARCHITECT FOR SITE GRADING ITEMS AS IT PERTAINS TO SITE LAYOUT. CIVIL DRAINAGE PLANS ARE FOR DRAINAGE ITEMS ONLY.

PLAN SCALE



EXISTING LEGEND

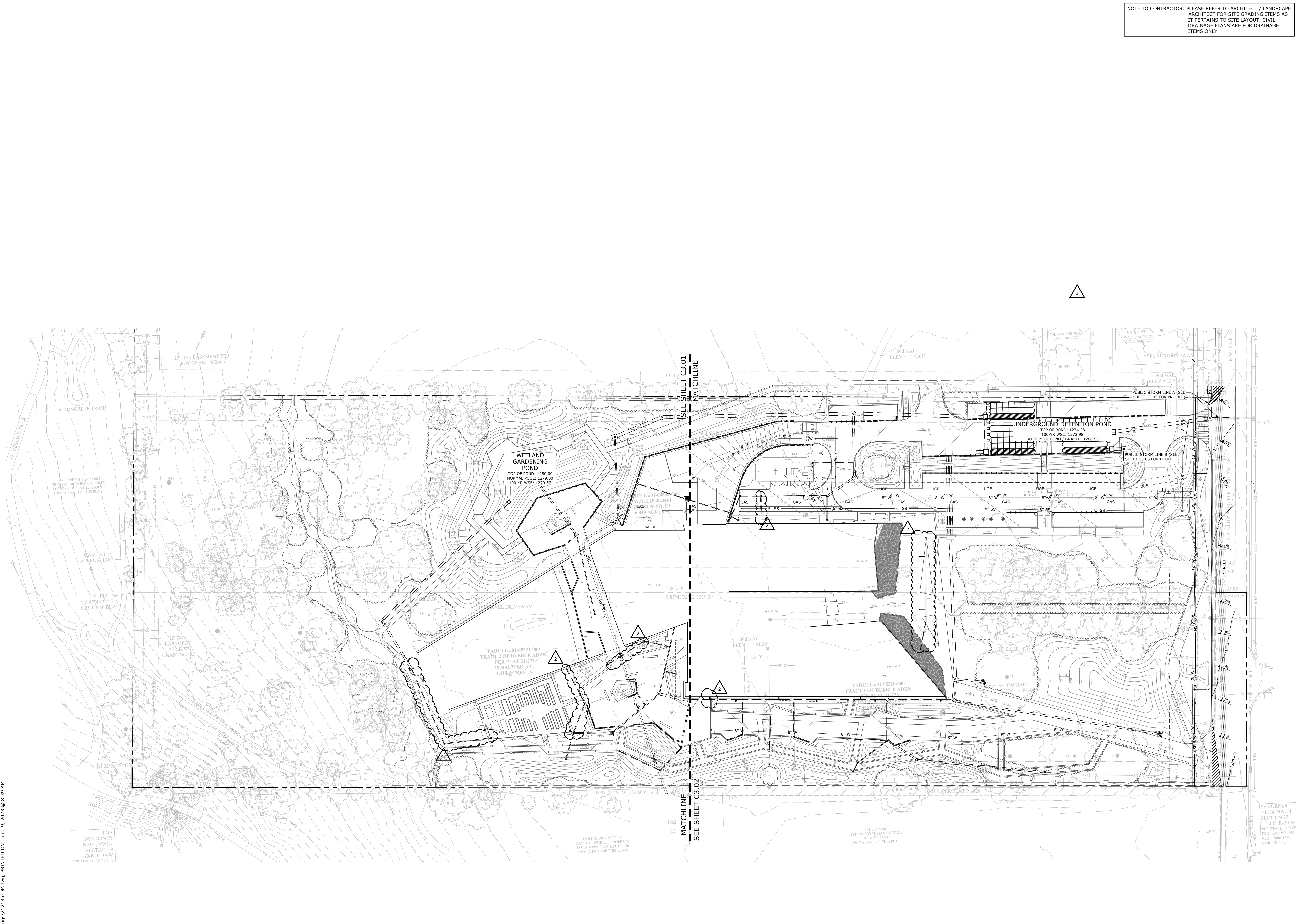
○ RECORDED TITLE	▽ FOUND 5" REBAR / CAP
○ MEASURED	▽ SET / FOUND PK NAIL
○ FOUND 5" REBAR	▽ RAILROAD SPIKE
○ SET 5" REBAR / CAP	○ BENCHMARK
○ SET 5" FOUND COTTON SPINDLE	○ TEMP BENCH MARK (ELEV.)
○ FOUND STONE	○ RIGHT-OR-WAY MARKER
○ SET FOUND ALUM. MONUMENT	○ COMPUTED POINT
○ STATE MONUMENT	○ STAKE OR LINE
○ FOUND PIPE	○ FENCE CORNER POST
○ BOLT	○ LIGHT
○ FOUND 12" REBAR	○ SIGN
○ NAIL	○ ELECTRICAL BOX
○ BOLLARD	○ TREE
○ CABLE PEDESTAL	○ BOUNDARY LINE (MEASURED)
○ TELEPHONE PEDESTAL	○ BOUNDARY LINE (EXISTING)
○ YARD HYDRANT	○ FORTY LINE / TIE LINE
○ WATER METER	○ CENTERLINE OF ROAD
○ SEPTIC LID	○ RIGHT-OR-WAY
○ FIRE HYDRANT	○ TREE LINE
○ STORM SEWER MH	○ WATER LINE
○ AC CONDENSER UNIT	○ OVERHEAD POWER LINE
○ SANITARY SEWER MH	○ SEWER LINE
○ MANHOLE	○ FLOW LINE
○ POWER POLE	○ FENCE
○ WATER VALVE	○ INGRESS & EGRESS EASEMENT
○ GAS METER	○ BUILDING SETBACK
○ ELECTRICAL METER	○ UTILITY EASEMENT

PROPOSED LEGEND

---XXX---	CONTOUR ELEVATION
---	STORM DRAIN
---	CATCH BASIN
---	ROADWAY PAVEMENT
---	SANITARY SEWER MANHOLE
---	FLOW END SECTION
---	FLOW ARROW
---	SPOT ELEVATIONS
---	G + GUTTER
---	F5 + FURFUR SURFACE

GENERAL DRAINAGE NOTES

- CONTRACTOR SHALL NOTIFY THE ENGINEER OF RECORD OF ANY EXISTING AND PROPOSED ELEVATION INACCURACIES OR DISCREPANCIES PRIOR TO PROCEEDING WITH CONSTRUCTION.
- INFORMATION PERTAINING TO UNDERGROUND UTILITIES WAS OBTAINED FROM AVAILABLE RECORDS AND FIELD LOCATIONS WHEN POSSIBLE. BUT THE CONTRACTOR MUST DETERMINE EXACT LOCATION AND ELEVATION OF ALL EXISTING UTILITIES BY DIGGING TEST FITS BY HAND AT ALL UTILITY CROSSINGS IN ADVANCE OF MACHINE TRENCHING. IF CLEARANCES ARE LESS THAN SPECIFIED ON THESE PLANS OR 18" WHICH EVER IS LESS, CONTACT THE ENGINEER AND THE OWNER / DEVELOPER PRIOR TO PROCEEDING WITH CONSTRUCTION.
- CONTRACTOR SHALL BE RESPONSIBLE FOR RELOCATION OR REMOVAL OF EXISTING UNDERGROUND UTILITIES SHOWN OR NOT SHOWN AT NO ADDITIONAL COST TO THE OWNER.
- ALL STRUCTURES LOCATED WITHIN STATE RIGHT-OF-WAY OR OTHERWISE NOTED ON THESE PLANS SHALL BE CONSTRUCTED PER STATE DOT STANDARDS. IF STRUCTURES ARE NOT PROTOTYPICAL OR CONSTRUCTION CANNOT BE ACHIEVED, THE CONTRACTOR SHALL SUBMIT SHOP DRAWINGS TO MCCLENDON CONSULTING ENGINEERS, INC. FOR REVIEW AND APPROVAL.
- CONTRACTOR SHALL COORDINATE WITH UTILITY COMPANIES ON ADJUSTING EXISTING UTILITY LINE AS REQUIRED BY CUT AND FILL AT NO ADDITIONAL COST TO THE OWNER.
- CONTRACTOR SHALL BE HELD RESPONSIBLE FOR THE DESIGN AND IMPLEMENTATION OF SHEETING, SHORING, BRACING, AND SPECIAL EXCAVATION MEASURES REQUIRED TO MEET ALL OSHA, FEDERAL, STATE AND LOCAL REGULATIONS PURSUANT TO THE INSTALLATION OF THE WORK INDICATED ON THESE DRAWINGS.
- ALL STORM DRAIN PIPES ARE MEASURED FROM CENTER OF STRUCTURES AND END OF FLEAD END SECTIONS.
- WHERE THE WORD "PIPE" IS USED, CONTRACTOR SHALL HAVE THE OPTION OF BIDDING PIPE WITH A SMOOTH INTERIOR HAVING AN "R" VALUE OF 0.013 OR LESS.
- ALL DRAINAGE STRUCTURES SHALL BE CAST-IN-PLACE (UNLESS OTHERWISE SPECIFIED OR APPROVED BY THE ENGINEER OF RECORD).
- RETAINING WALLS SHALL BE CONSTRUCTED TO EXTEND A MINIMUM OF 6 INCHES ABOVE THE TOP OF FINISHED GRADE. CONTRACTOR SHALL REFER TO THE RETAINING WALL PLANS FOR CONSTRUCTION AND DESIGN SPECIFICATIONS. CONTRACTOR SHALL NOTIFY THE ENGINEER OF RECORD IF ANY DIFFER FROM THIS.
- ALL DISTURBED AREAS AND SLOPES SHALL BE GRADED SMOOTH AND (4") OF TOP SOIL APPLIED. THE AREA SHALL BE SEEDED AND WATERED UNTIL MAJORITY GRASS GROWTH HAS BEEN ESTABLISHED (SEE LANDSCAPING GENERAL NOTES FOR SEEDING MIX & SPECIFICATIONS).
- STORM SEWER TRENCHING AND BEDDING SHALL BE INSTALLED PER DETAIL 33G.
- CONTRACTOR SHALL CONSTRUCT AND MAINTAIN ALL EROSION AND SEDIMENTATION CONTROL PRACTICES IN ACCORDANCE WITH THE EROSION CONTROL PLAN AND CONSTRUCTION SCHEDULE. CONTRACTOR SHALL ALSO BE RESPONSIBLE FOR IMPLEMENTING THE SWPPP.
- REMOVE GOOD TOPSOIL FROM AREAS TO BE GRADED AND FILLED, AND PRESERVE IT FOR USE IN FINISHING THE GRADING OF ALL CRITICAL AREAS.
- SCARIFY AREAS TO RECEIVE TOPSOIL TO A MINIMUM DEPTH OF 3 INCHES BEFORE PLACING TOPSOIL PER OWNER / DEVELOPER, CITY, AND / OR DOT STANDARDS AND SPECIFICATIONS.
- CLEAR AND GRUB AREAS TO BE FILLED, REMOVE TREES, VEGETATION, ROOTS, DEBRIS, AND OTHER MATERIALS THAT WOULD AFFECT THE STABILITY OF THE FILL.
- ENSURE THAT FILL MATERIAL IS FREE OF BRUSH, RUBBISH, ROCKS, LOGS, STUMPS, BUILDING DEBRIS, AND OTHER MATERIALS INAPPROPRIATE FOR CONSTRUCTING STABLE FILLS.
- DO NOT INCORPORATE FROZEN MATERIAL OR SOFT, MUCK, OR HIGHLY COMPRESSIBLE MATERIALS INTO FILL SLOPES.
- KEEP DIVERSIONS AND OTHER WATER CONVEYANCE MEASURES FREE OF SEDIMENT DURING ALL PHASES OF DEVELOPMENT.
- PERMANENTLY STABILIZE ALL GRADED AREAS AFTER FINAL GRADING IS COMPLETED ON EACH AREA OF THE GRADING PLAN. APPLY TEMPORARY STABILIZATION MEASURES ON ALL GRADED AREAS WHEN WORK IS TO BE INTERRUPTED OR DELAYED (SEE EROSION CONTROL PLANS).
- CONTRACTOR SHALL MATCH TOP OF PROPOSED DRAINAGE STRUCTURES WITH PROPOSED GRADES. IF A DISCREPANCY OCCURS BETWEEN PROPOSED GRADES AND PROPOSED STRUCTURE TOPS, THE GRADING SHALL GOVERN. IF THE DISCREPANCY IS MORE THAN 4 INCHES, THE CONTRACTOR SHALL CONTACT THE ENGINEER OF RECORD.
- ALL UTILITIES, INCLUDING STORM SEWER, SHOWN WITHIN PUBLIC EASEMENTS OR RIGHT-OF-WAYS SHALL BE CONSTRUCTED TO THE GOVERNING AGENCY'S SPECIFICATIONS. ALL OTHER UTILITIES SHALL BE CONSTRUCTED TO THE CLIENT'S OR THE GOVERNING AGENCY'S SPECIFICATIONS, WHICHEVER IS MORE STRINGENT. IF THERE IS A QUESTION AS TO WHICH SPECIFICATIONS SHOULD APPLY, THE CONTRACTOR SHALL CONTACT THE ENGINEER OF RECORD.
- ALL DRAINAGE STRUCTURES AND STORM SEWER PIPES SHALL MEET HEAVY DUTY TRAFFIC (HSD) LOADING AND BE INSTALLED ACCORDINGLY.
- CONTRACTOR SHALL NOTIFY ALL UTILITY COMPANIES HAVING UNDERGROUND UTILITIES ON SITE OR IN RIGHT-OF-WAY PRIOR TO EXCAVATION. CONTRACTOR SHALL CONTACT UTILITY LOCATING COMPANY (STATE ONE CALL SYSTEM) AND LOCATE ALL UTILITIES PRIOR TO GRADING START.
- SITE GRADING SHALL NOT PROCEED UNTIL PERIMETER EROSION CONTROL MEASURES HAVE BEEN INSTALLED.
- REFER TO GEOTECHNICAL REPORT FOR GENERAL DESCRIPTION OF SOIL STRATA AND INFORMATION ON EXISTING ROCK.
- CONTRACTOR IS RESPONSIBLE FOR ALL CONSTRUCTION LAYOUT AND STAKING (UNLESS APPROVED OTHERWISE BY THE ENGINEER OF RECORD).
- CONTRACTOR TO SUBMIT SHOP DRAWINGS FOR SIZING OF NYLON/PLAST STRUCTURES.



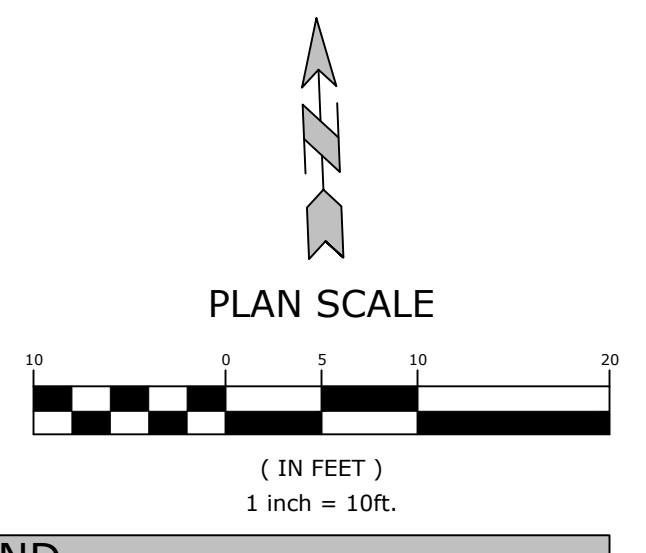
NOB
SW CORNER
NE1/4, NW1/4
SECTION 29
T-20N, R-30W
MID MISS TRIPLE PLATS

PARCELS 001-05320-000
TRACT 2 OF DEEBLE ADDN.
PER PLAT 31-223
18292.79 SQ. FT.
4.418 ACRES +/-

MATCHLINE
SEE SHEET C3.02

△

NOTE TO CONTRACTOR: PLEASE REFER TO ARCHITECT / LANDSCAPE ARCHITECT FOR SITE GRADING ITEMS AS IT PERTAINS TO SITE LAYOUT. CIVIL DRAINAGE PLANS ARE FOR DRAINAGE ITEMS ONLY.



EXISTING LEGEND

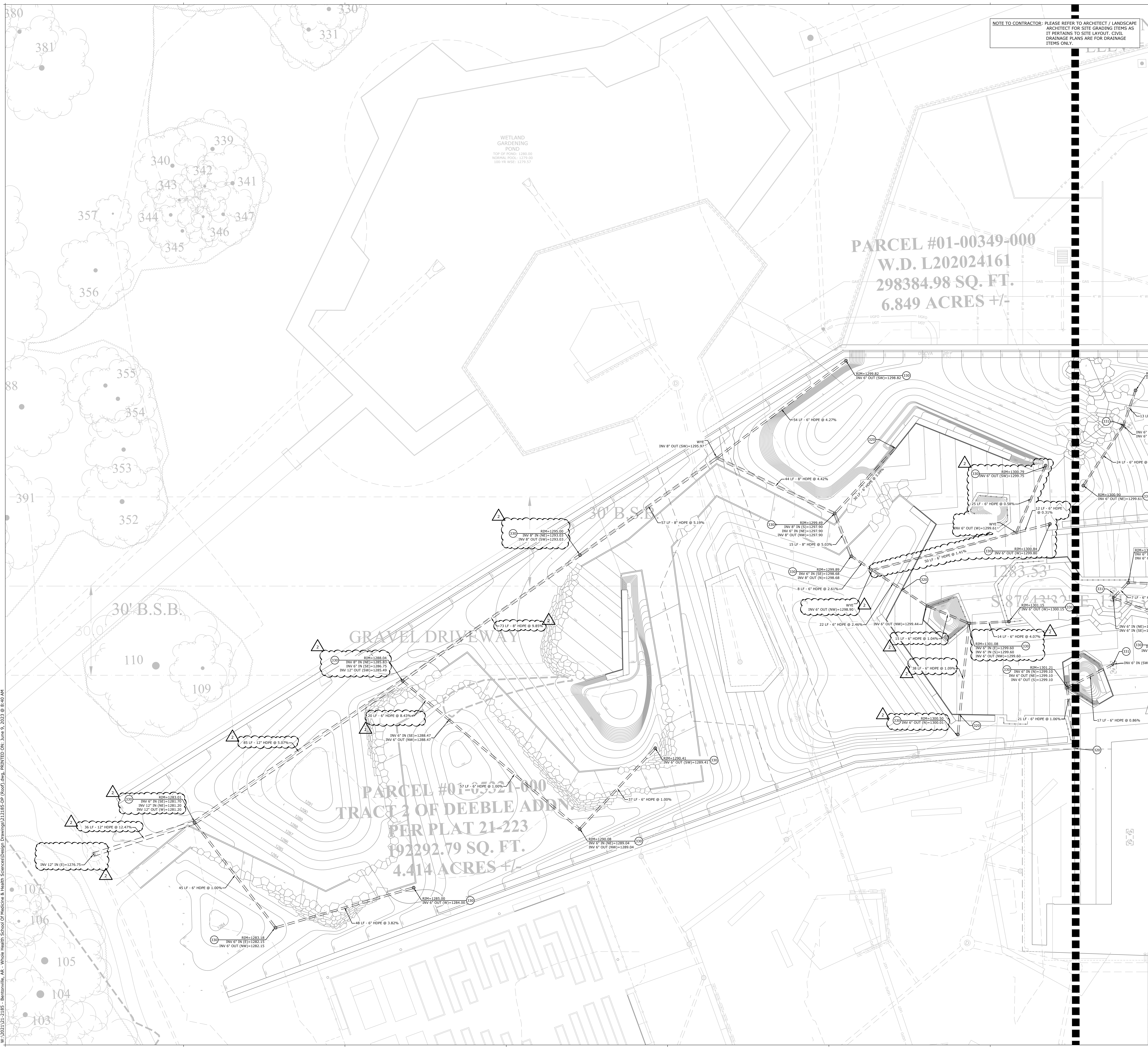
- RECORDED TITLE
- MEASURED
- FOUND 5/8" REBAR
- SET 5/8" REBAR CAP
- SET FOUND COTTON SPINDLE
- FOUND STONE
- SET FOUND ALUM. MONUMENT
- STATE MONUMENT
- FOUND PIPE
- BOULDER
- FOUND 1/2" REBAR
- NAIL
- BOLLARD
- CABLE PEDESTAL
- TELEPHONE PEDESTAL
- YARD HYDRANT
- WATER METER
- SEPTIC LID
- FIRE HYDRANT
- STORM SEWER MH
- AC CONDENSER UNIT
- SANITARY SEWER MH
- MANHOLE
- POWER POLE
- FENCE
- WATER VALVE
- GAS METER
- ELECTRICAL METER
- FOUND 5/8" REBAR/CAP
- SET FOUND PK NAIL
- RAILROAD SPIKE
- BENTONITE MARK
- TEMP BENCH MARK (ELEV.)
- RIGHT-OF-WAY MARKER
- COMPUTED POINT
- STAKE ON LINE
- FENCE CORNER POST
- LIGHT
- SILO
- ELECTRICAL BOX
- TREE
- BOUNDARY LINE (MEASURED)
- BOUNDARY LINE (EXISTING)
- FORTY LINE: TIE LINE
- CENTERLINE OF ROAD
- RIGHT-OF-WAY
- TREE LINE
- WATER LINE
- OVERHEAD POWER LINE
- SEWER LINE
- FLOW LINE
- FENCE
- INGRESS & EGRESS EASEMENT
- BUILDING SETBACK
- UTILITY EASEMENT

PROPOSED LEGEND

- CONTOUR ELEVATION
- STORM DRAIN
- CATCH BASIN

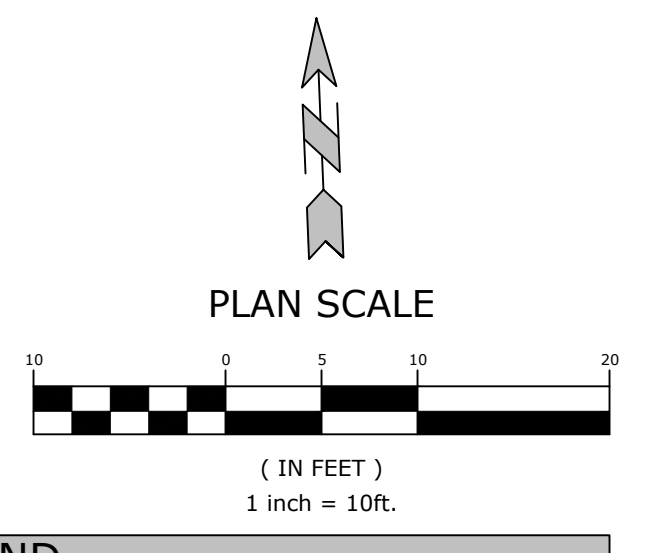
DRAINAGE KEYNOTES

- 320 FOUNDATION/LANDSCAPE DRAIN CONNECTION POINT
- 330 12" NDS SQUARE BASIN w/ BRASS GRATE (OR ENGINEER APPROVED EQUAL)
- 331 PIPE OUTFALL INTO ACCESS STRUCTURE FOR ROOF RISER



W:\2023\21-2185 - Bentonville, AR - Whole Health School Of Medicine & Health Sciences\Design Drawings\212185-CP (roof) (dwg) PRINTED ON: June 9, 2023 @ 8:40 AM

NOTE TO CONTRACTOR: PLEASE REFER TO ARCHITECT / LANDSCAPE ARCHITECT FOR SITE GRADING ITEMS AS IT PERTAINS TO SITE LAYOUT. CIVIL DRAINAGE PLANS ARE FOR DRAINAGE ITEMS ONLY.



EXISTING LEGEND

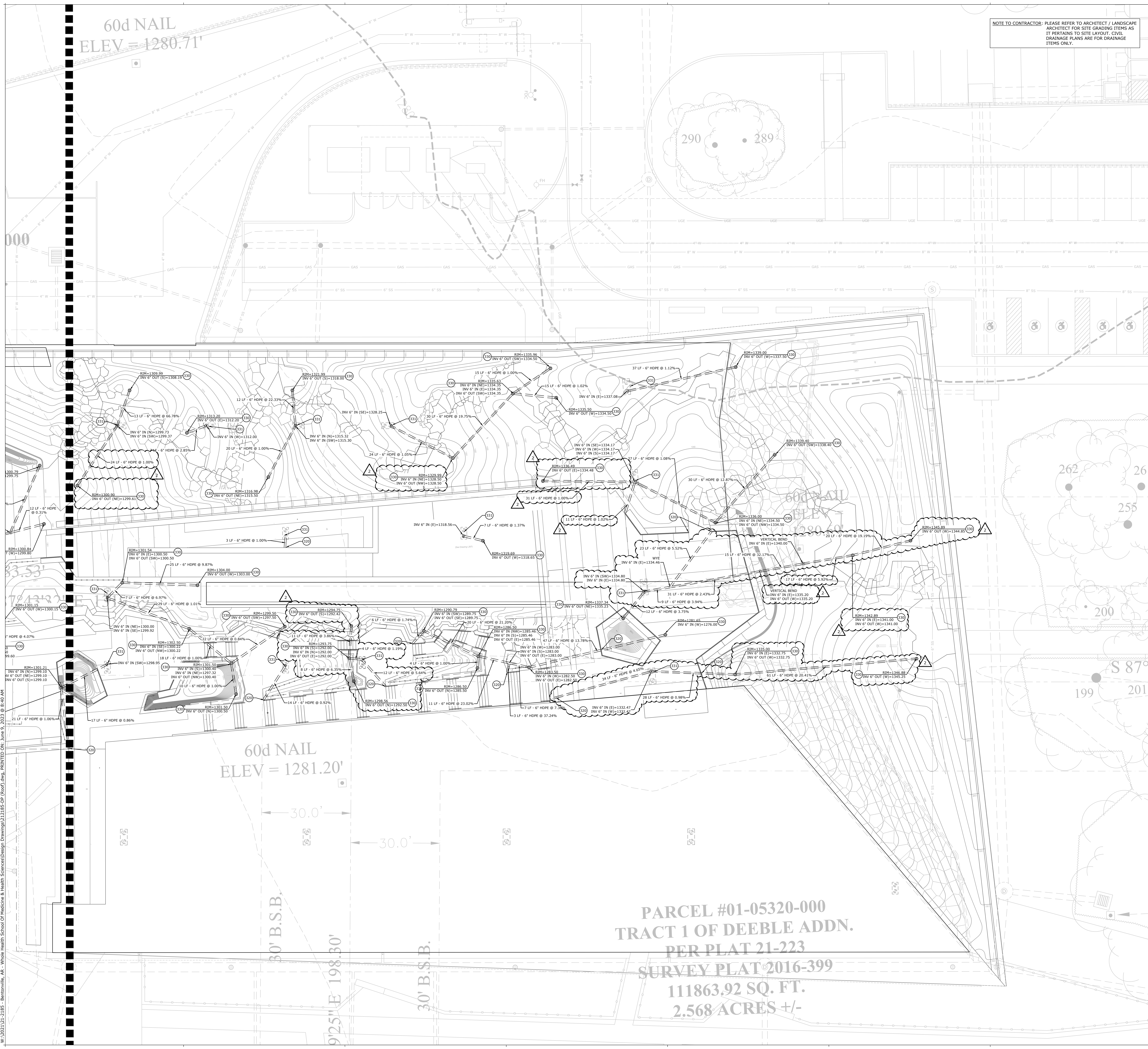
RECORDED TITLE	FOUND 5" REBAR/CAP
MEASURED	SET FOUND PK NAIL
FOUND 5" REBAR	RAILROAD SPIKE
SET 5" REBAR/CAP	BENCHMARK
SET FOUND COTTON SPINDLE	TEMP BENCH MARK (ELEV)
FOUND STONE	RIGHT-OF-WAY MARKER
SET FOUND ALUM. MONUMENT	COMPUTED POINT
STATE MONUMENT	STAKE ON LINE
FOUND PIPE	FENCE CORNER POST
BOLT	LIGHT
FOUND 1/2" REBAR	SION
NAIL	ELECTRICAL BOX
BOLLARD	TREE
CABLE PEDESTAL	BOUNDARY LINE (MEASURED)
TELEPHONE PEDESTAL	BOUNDARY LINE (EXISTING)
YARD HYDRANT	FORTY LINE/TIE LINE
WATER METER	CENTERLINE OF ROAD
SEPTIC LID	RIGHT-OF-WAY
FIRE HYDRANT	TREE LINE
STORM SEWER MH	WATER LINE
A/C CONDENSER UNIT	OVERHEAD POWER LINE
SANITARY SEWER MH	SEWER LINE
MANHOLE	FLOW LINE
POWER POLE	FENCE
WATER VALVE	INGRESS & EGRESS EASEMENT
GAS METER	BUILDING SETBACK
ELECTRICAL METER	UTILITY EASEMENT

PROPOSED LEGEND

XXX	CONTOUR ELEVATION
---	STORM DRAIN
---	CATCH BASIN

DRAINAGE KEYNOTES

320	FOUNDATION/LANDSCAPE DRAIN CONNECTION POINT
330	12" NDS SQUARE BASIN w/ BRASS GRATE (OR ENGINEER APPROVED EQUAL)
331	PIPE OUTLET INTO ACCESS STRUCTURE FOR ROOF RISER

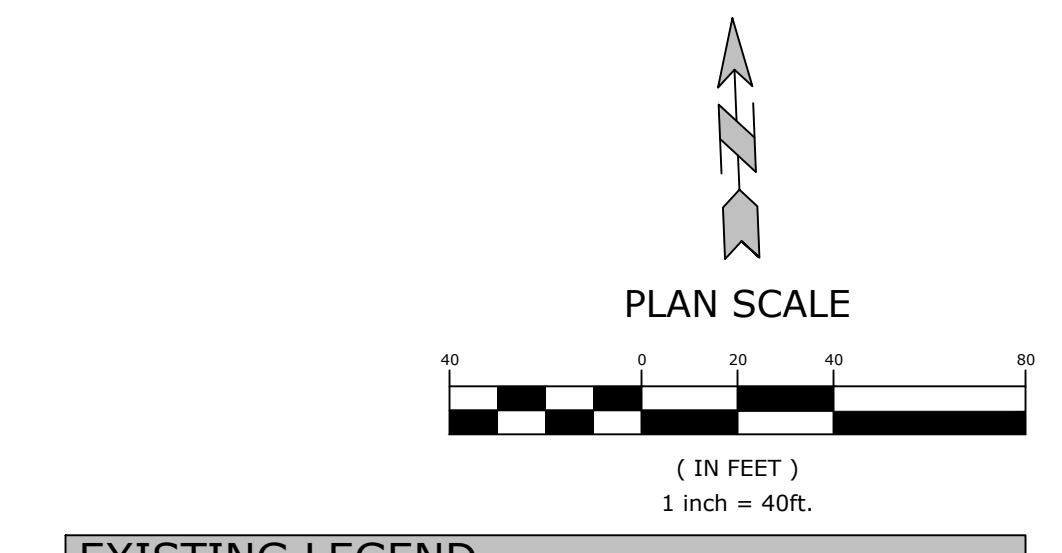


NOTE TO CONTRACTOR: ALL PUBLIC WATER & SEWER IMPROVEMENTS ARE TO BE CONSTRUCTED, TESTED AND INSPECTED, AND ACTIVATED CONCURRENTLY. BENTONVILLE WATER UTILITIES WILL NOT ACCEPT WITHOUT BOTH BEING COMPLETED (REFER TO NE J STREET UTILITY IMPROVEMENTS, MCE PROJECT # 22-2132 / LSD PROJECT # 22-0069). THE CONTRACTOR SHALL BE RESPONSIBLE FOR THE COMPLETION OF THE REMAINING PUBLIC UTILITY IMPROVEMENTS SHOWN WITH THE ADJACENT PROJECT SHOULD THAT PROJECT NOT COMPLETE IT FOR ANY REASON (REFER TO NE J STREET UTILITY IMPROVEMENTS, MCE PROJECT # 22-2132 / LSD PROJECT # 22-0069).

NOTE: CONTACT MUD AT (479) 271-3135 BEFORE PERFORMING ANY GRADING WITHIN 5' OF EXISTING OR PROPOSED POWER POLES.

NOTE: FIELD DESIGN LAYOUT DRAWING TAKES PRECEDENCE OVER ANY ELECTRIC INFORMATION SHOWN ON THE SITE UTILITY PLAN.

NOTE: ELECTRIC FACILITIES SHALL BE INSTALLED IN ACCORDANCE WITH THE LATEST EDITION OF THE ELECTRIC SPECIFICATIONS FOUND ON THE WEBSITE. CONTRACTOR IS RESPONSIBLE FOR COMPLIANCE WITH THIS DOCUMENT.



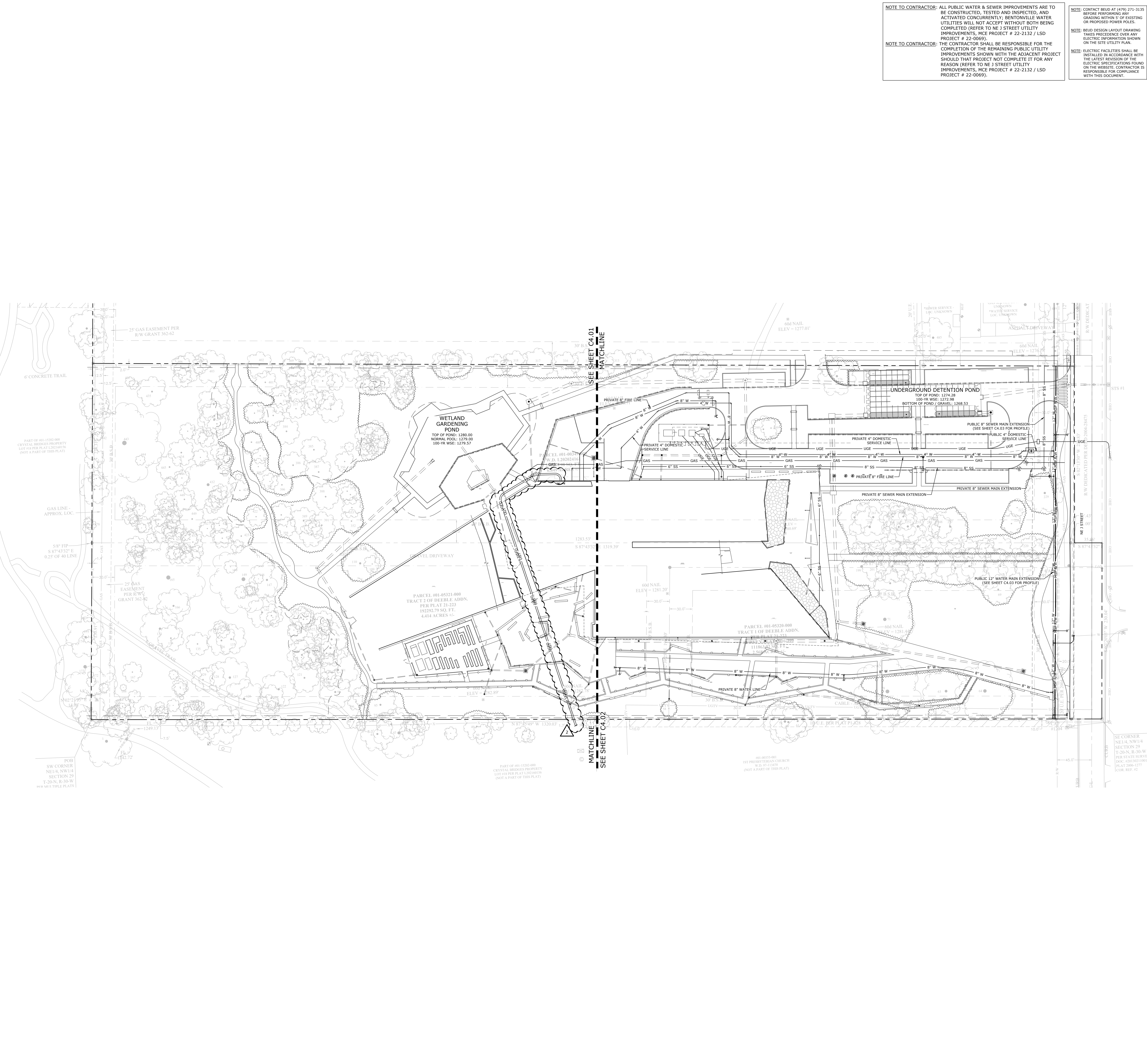
EXISTING LEGEND

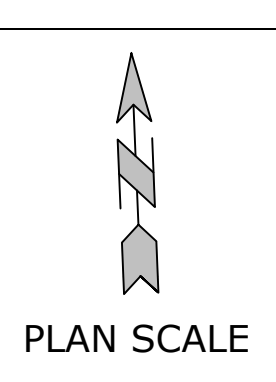
RECORDED TITLE	FOUND 5" REBAR / CAP
MEASURED	SET / FOUND PK NAIL
FOUND 5" REBAR	RAILROAD SPIKE
SET 5" REBAR / CAP	BENCHMARK
SET / FOUND COTTON SPINDLE	TEMP BENCH MARK (ELEV.)
FOUND STONE	RIGHT-OR-WAY MARKER
SET / FOUND ALUM. MONUMENT	COMPUTED POINT
STATE MONUMENT	STAKE ON LINE
FOUND PIPE	FENCE CORNER POST
FOUND 12" REBAR	LIGHT
NAIL	SKIN
BOLLARD	ELECTRICAL BOX
CABLE PEDESTAL	TREE
TELEPHONE PEDESTAL	BOUNDARY LINE (MEASURED)
YARD HYDRANT	BOUNDARY LINE (EXISTING)
WATER METER	FORTY LINE / TIE LINE
SEPTIC LID	CENTERLINE OF ROAD
FIRE HYDRANT	RIGHT-OR-WAY
AC CONDENSER UNIT	TREE LINE
SANITARY SEWER MH	WATER LINE
MANHOLE	OVERHEAD POWER LINE
POWER POLE	SEWER LINE
WATER VALVE	FLOW LINE
GAS METER	INGRESS & EGRESS EASEMENT
ELECTRICAL METER	BUILDING SETBACK
	UTILITY EASEMENT

PROPOSED LEGEND

GAS	STORM DRAIN
GAS METER	GAS METER
ELECTRIC METER	ELECTRIC METER
UGFO	UNDERGROUND FIBER OPTIC LINE
USE	UNDERGROUND ELECTRIC LINE
W	WATER LINE
Fire Hydrant	FIRE DEPARTMENT CONNECTION
Water Meter	WATER METER
Water Valve	WATER VALVE
Corporation Stop	CORPORATION STOP
Sanitary Sewer Line	SANITARY SEWER LINE
Sanitary Sewer Manhole	SANITARY SEWER MANHOLE
Clean Out	CLEAN OUT
Electric Transformer	ELECTRIC TRANSFORMER
Catch Basin	CATCH BASIN

- GENERAL UTILITY NOTES**
- ALL WATER MAINS SHALL BE PVC (C-90; DR-14), UNLESS OTHERWISE SPECIFIED ON THE PLANS. SIZE AS NOTED ON THE PLANS AND TO MAINTAIN 48" OF COVER FOR 8" LINES AND TO MAINTAIN 36" OF COVER (MINIMUM). ALL SEWER MAINS SHALL BE PVC (SDR-26), UNLESS OTHERWISE SPECIFIED ON THE PLANS. SIZE AS NOTED ON THE PLANS AND TO MAINTAIN 36" OF COVER (MINIMUM). ALL FIBER / FOC LINES SHALL BE DUCTILE IRON, UNLESS OTHERWISE SPECIFIED ON THE PLANS AND CONSTRUCTED TO WATER SPECIFICATIONS. SIZE AS NOTED ON THE PLANS AND TO MAINTAIN 48" OF COVER (MINIMUM). ALL DOMESTIC WATER SERVICE LINES AFTER THE METER TO BUILDINGS SHALL BE POLYETHYLENE PIPE, UNLESS OTHERWISE SPECIFIED ON THE PLANS. SIZE AS NOTED ON THE PLANS AND TO MAINTAIN 36" OF COVER (MINIMUM). ALL SANITARY SEWER SERVICE LINES SHALL BE PVC (SCH-40), OR OTHERWISE SPECIFIED ON THE PLANS. SIZE AS NOTED ON THE PLANS AND TO MAINTAIN 36" OF COVER (MINIMUM).
 - EXISTING UTILITIES SHOWN ON PLANS HAVE BEEN SHOWN IN THEIR APPROXIMATE LOCATIONS PER AVAILABLE INFORMATION.
 - CONSTRUCTION SHALL NOT START ON ANY PUBLIC UTILITY SYSTEM UNTIL WRITTEN APPROVAL HAS BEEN RECEIVED FROM THE APPROPRIATE UTILITY AUTHORITIES AND THE OWNER, AND THE CONTRACTOR HAS BEEN NOTIFIED BY MCCLELLAND CONSULTING ENGINEERS, INC. AND THE OWNER ARE TO BE HELD HARMLESS.
 - CONTRACTOR SHALL NOT OPEN, TURN OFF, INTERFERE WITH, OR ATTACH ANY PIPE OR HOSE TO OR TAP ANY PUBLIC WATER MAIN. ANY ADVERSE CONSEQUENCES OF ANY SCHEDULED OR UNSCHEDULED DISRUPTIONS OF SERVICE TO THE PUBLIC ARE TO BE THE LIABILITY OF THE CONTRACTOR. MCCLELLAND CONSULTING ENGINEERS, INC. AND THE OWNER ARE TO BE HELD HARMLESS.
 - ALL TRENCHING, BACKFILLING AND PIPE LAYING IS TO MEET ALL OSHA REQUIREMENTS.
 - THE LOCATION, DESCRIPTION AND SIZE OF ALL ABOVE-GROUND AND UNDERGROUND FACILITIES, STRUCTURES AND UTILITIES HAVE BEEN OTHERWISE SPECIFIED WITH DUE CARE AND DILIGENCE, USING CURRENT TECHNIQUES, EQUIPMENT AND PROPER ACCURACY. CONTROL PROCEDURES, HOWEVER, INFORMATION SHOWN HEREON IS NOT WARRANTED TO BE CORRECT IN EVERY DETAIL BECAUSE OF INACCURACIES, SAID OR LACK OF EXISTING DATA OR MAPS, AND THE INABILITY TO VERIFY IN THE FIELD. PERSONS USING INFORMATION CONTAINED HEREON ARE HEREBY CAUTIONED ACCORDINGLY.
 - REFER TO BUILDING PLANS FOR SITE LIGHTING ELECTRICAL PLANS.
 - ALL WATER & SEWER DESIGNS ARE SUBJECT TO THE CITY'S LATEST DESIGN CRITERIA (CITY OF BENTONVILLE WATER UTILITIES DEPARTMENT SPECIFICATIONS (2021) AS APPROVED UNDER ORDINANCE NO. 2021-123). REVIEW FOR PLAT APPROVAL IS NOT APPROVAL OF PUBLIC IMPROVEMENTS, AND ALL PROPOSED IMPROVEMENTS ARE SUBJECT TO FURTHER REVIEW AT THE TIME CONSTRUCTION PLANS ARE SUBMITTED.
 - ANY DAMAGE TO THE EXISTING PUBLIC STREET DUE TO CONSTRUCTION SHALL BE REPAIRED / REPLACED AT THE OWNER'S EXPENSE PRIOR TO COMPLETION.
 - ALL UTILITY SERVICE LINES TO BE CONNECTED TO NEW MAINS OR RELOCATED AS NEEDED FOR INSTALLATION OF STORM SEWER SYSTEM.
 - ALL CONDUITS PLACED BY CONTRACTOR MUST HAVE 24" OF COVER AT FINAL GRADE AND MARKED WITH CHIPS TO IDENTIFY THE ENDS OF CONDUITS. THERE MUST BE A MINIMUM SEPARATION OF 12" BETWEEN ELECTRICAL CONDUITS AND CONDUITS FOR OTHER UTILITIES.
 - SERVICE TAPS ON EXISTING UTILITY MAINS SHALL BE MADE BY THE CITY, AND FEES PAID BY CONTRACTOR. CONTRACTOR SHALL BE RESPONSIBLE FOR ANY TAPS MADE ON PROPOSED UTILITY MAINS.
 - ALL UNDERGROUND LINES SHALL BE INSPECTED BY THE ENGINEER, OR HIS REPRESENTATIVE, PRIOR TO BACK FILLING.
 - PUBLIC / PRIVATE SANITARY SEWER MAIN LINE TRENCHING AND BEDDING SHALL BE INSTALLED PER CITY OF BENTONVILLE STANDARD DETAIL 09057. PRIVATE DOMESTIC SANITARY SEWER SERVICE LINE TRENCHING AND BEDDING SHALL BE INSTALLED PER CITY OF BENTONVILLE STANDARD DETAIL 09057.
 - PUBLIC WATER MAIN, WATER SERVICE LINE TO METER, AND / OR FOC LINE TRENCHING AND BEDDING SHALL BE INSTALLED PER CITY OF BENTONVILLE STANDARD DETAIL 09057. PRIVATE DOMESTIC WATER SERVICE LINE AFTER METER TRENCHING AND BEDDING SHALL BE INSTALLED PER CITY OF BENTONVILLE STANDARD DETAIL 09057.
 - ALL WATER LINE DIMENSIONS SHOWN ARE TO CENTER OF PIPE OR FITTING; ALL SEWER LINE DIMENSIONS ARE SHOWN TO CENTER OF MANHOLE OR CENTER OF PIPE.
 - TESTING OF WATER AND SEWER LINES SHALL BE AT THE CONTRACTOR'S EXPENSE.
 - TOPS OF EXISTING MANHOLES SHALL BE RAISED AS NECESSARY TO BE EITHER FLUSH WITH FINISHED GRADES IN PAVED AREAS, OR 4" ABOVE FINISHED GRADES IN UNPAVED AREAS. TOPS OF PROPOSED MANHOLES SHALL BE FLUSH WITH FINISHED GRADES IN PAVED AREAS, OR 4" ABOVE FINISHED GRADES IN UNPAVED AREAS.
 - ALL UTILITIES UNDER PAVED AREAS SHALL RECEIVE CLASS 7 BASE BACKFILL FULL DEPTH.
 - MAINTAIN MINIMUM HORIZONTAL SEPARATION OF 10' BETWEEN WATER AND SEWER MAINS AND 5' BETWEEN OTHER UNDERGROUND UTILITIES SUCH AS STORM SEWER, ELECTRICAL, GAS, DOMESTIC WATER / SEWER SERVICE LINES, AND CONDUITS.
 - ALL EXISTING WATER, GAS AND / OR ELECTRICAL METERS AS NOTED TO BE ABANDONED AND / OR REMOVED PER THE DEMOLITION PLAN WITHIN THE PROJECT AREA ARE TO BE RETURNED TO THE APPROPRIATE AUTHORITY.
 - COORDINATION OF ALL CONDUIT PLACEMENT SHALL BE MADE WITH UTILITY PROVIDERS.
 - ALL WATER AND SEWER FORCE MAIN FITTINGS SHALL BE RESTRAINED THROUGH THE USE OF THURST BLOCKING PER CITY OF BENTONVILLE STANDARD DETAIL 09052 & G050 OR APPROVED EQUAL.
 - PROPOSED UTILITIES THAT ARE TO BE BURIED IN THE SAME TRENCH SHALL BE COORDINATED WITH, AND APPROVED BY, THE INVOLVED UTILITIES PRIOR TO INSTALLATION.
 - CONTRACTOR SHALL FIELD VERIFY DEPTH AND LOCATION OF ALL EXISTING UTILITIES PRIOR TO CONSTRUCTION OF PROPOSED UTILITIES.
 - ALL PROPOSED UTILITIES SHALL BE CONSTRUCTED IN ACCORDANCE WITH GOVERNING AGENCY.
 - CONTRACTOR IS RESPONSIBLE FOR ALL CONSTRUCTION LAYOUT AND STAKING (UNLESS APPROVED OTHERWISE BY THE ENGINEER OF RECORD).





PARCEL #01-00348-000
 W.D. L201825085
 252231.88 SQ. FT.
 5.790 ACRES +/-

- EXISTING LEGEND**
- MEASURED
 - FOUND 5" REBAR
 - SET 5" REBAR CAP
 - SET 7" FOUND COTTON SPINDLE
 - FOUND STONE
 - SET FOUND ALUM. MONUMENT
 - STATE MONUMENT
 - FOUND PIPE
 - BOLT
 - FOUND 1/2" REBAR
 - NAIL
 - BOLLARD
 - CABLE PEDESTAL
 - TELEPHONE PEDESTAL
 - YARD HYDRANT
 - WATER METER
 - SEPTIC LID
 - FIRE HYDRANT
 - STORM SEWER MH
 - AC CONDENSER UNIT
 - SANITARY SEWER MH
 - MANHOLE
 - POWER POLE
 - WATER VALVE
 - GAS METER
 - ELECTRICAL METER
 - ▽ SET / FOUND P.K. NAIL
 - BENCHMARK
 - TEMP BENCH MARK (ELEV.)
 - RIGHT-OF-WAY MARKER
 - COMPUTED POINT
 - STAKE OR LINE
 - FENCE CORNER POST
 - LIGHT
 - SIGN
 - ELECTRICAL BOX
 - TREE
 - BOUNDARY LINE (MEASURED)
 - FORTY LINE: THE LINE
 - CENTERLINE OF ROAD
 - RIGHT-OF-WAY
 - TREE LINE
 - WATER LINE
 - OVERHEAD POWER LINE
 - SEWER LINE
 - FLOW LINE
 - INGRESS & EGRESS EASEMENT
 - BUILDING SETBACK
 - UTILITY EASEMENT

- PROPOSED LEGEND**
- STORM DRAIN
 - GAS LINE
 - GAS METER
 - ELECTRIC METER
 - UG/FIBER OPTIC LINE
 - UG/ELECTRIC LINE
 - WATER LINE
 - FIRE DEPARTMENT CONNECTION
 - FIRE HYDRANT
 - WATER METER
 - WATER VALVE
 - CORPORATION STOP
 - SANITARY SEWER LINE
 - SANITARY SEWER MANHOLE
 - CLEAN-OUT
 - ELECTRICAL TRANSFORMER
 - CATCH BASIN

- UTILITY KEYNOTES**
- 400 POINT OF CONNECTION - WATER SERVICE
 - 401 FIRE SPRINKLER BUILDING ENTRY (SEE PLUMBING PLANS) - SHOULD THE FIRE DESIGN FROM THE FIRE CONSULTANT DEViate IN ANY WAY FROM THE CIVIL UTILITY SITE PLAN, THE CONTRACTOR SHALL CONTACT THE ENGINEER OF RECORD FOR COORDINATION PRIOR TO THE START OF CONSTRUCTION
 - 402 DOMESTIC WATER SERVICE BUILDING ENTRY (SEE PLUMBING PLANS)
 - 403 FIRE DEPARTMENT CONNECTION BUILDING ENTRY (SEE PLUMBING PLANS)
 - 404 FIRE DEPARTMENT CONNECTION (PER LOCAL CODES)
 - 405 PROPOSED WATER METER (SEE SIZE AT SYMBOL)
 - 407 TAPPING SLEEVE AND VALVE w/ THRUST BLOCKING AND ADJUSTABLE VALVE BOX (SEE SIZE AT SYMBOL)
 - 409 CORPORATION STOP (SEE SIZE AT SYMBOL)
 - 410 GATE VALVE WITH ADJUSTABLE VALVE BOX (SEE SIZE AT SYMBOL)
 - 411 REDUCER (SEE SIZE AT SYMBOL)
 - 413 CAP VALVE w/ THRUST BLOCKING (SEE SIZE AT SYMBOL)
 - 414 Tee w/ THRUST BLOCKING (SEE SIZE AT SYMBOL)
 - 416 22-1/2" BEND w/ THRUST BLOCKING (SEE SIZE AT SYMBOL)
 - 417 45° BEND w/ THRUST BLOCKING (SEE SIZE AT SYMBOL)
 - 418 22-1/2" BEND w/ THRUST BLOCKING (SEE SIZE AT SYMBOL)
 - 419 1-1/4" BEND w/ THRUST BLOCKING (SEE SIZE AT SYMBOL)
 - 421 POINT OF CONNECTION - SANITARY SEWER SERVICE
 - 422 SANITARY SEWER SERVICE BUILDING ENTRY (SEE PLUMBING PLANS)
 - 423 SANITARY SEWER SERVICE (SEE PLUMBING PLANS)
 - 428 CONNECT TO EXISTING SANITARY SEWER STUB OUT
 - 430 POINT OF CONNECTION - ELECTRIC SERVICE (PER ELECTRIC COMPANY REQUIREMENTS)
 - 432 ELECTRIC BUILDING ENTRY (SEE ELECTRIC PLANS)
 - 435 PROPOSED ELECTRIC TRANSFORMER & PAD (PER ELECTRIC COMPANY REQUIREMENTS)
 - 438 TELEPHONE / INTERNET BUILDING ENTRY (SEE ARCH / MEP PLANS)
 - 442 NATURAL GAS METER
 - 443 NATURAL GAS BUILDING ENTRY (SEE PLUMBING PLANS)
 - 449 ELECTRICAL JUNCTION BOX (SEE ELECTRIC PLANS)
 - 450 ELECTRICAL GENERATOR (SEE ELECTRIC PLANS)
 - 451 SCREEN ENCLOSURE FOR MECHANICAL ENCLOSURE (SEE LANDSCAPE PLANS)
 - 452 SANITARY SEWER MANHOLE TO BE PROVIDED UNDER SEPARATE CONTRACT; WILL BE EXISTING AT TIME OF SITE CONSTRUCTION; CONTRACTOR TO COORDINATE SEWER MAIN EXTENSION w/ OFFSITE DESIGN PLANS AND SCHEDULE; REFER TO FILE #3 STREET UTILITY IMPROVEMENTS, HCE PROJECT # 22-2132 / LSO PRODUCT # 22-0069
 - 453 WATER LINE SHALL MAINTAIN 3" (MIN) COVER AT ALL TIMES
 - 454 WATER LINE SHALL MAINTAIN 4" (MIN) COVER AT ALL TIMES
 - 455 WATER LINE SHALL MAINTAIN 5" (MIN) COVER AT ALL TIMES
 - 457 CONTRACTOR SHALL NOT INSTALL CONDUIT RISER UNTIL AFTER BEUD HAS INSTALLED RISER BRACK
 - 458 METER BASES AND DISCONNECTS
 - 459 CONTRACTOR SHALL INSTALL 4" GREY SCH 40 PVC CONDUIT PER BEUD SPECIFICATION DS-1403 / 1404 (TYP)
 - 460 CONTRACTOR SHALL BORE & INSTALL 4" GREY SCH 40 PVC OR HDPE ROLL PIPE AND SHALL MAINTAIN 48" MINIMUM COVER OVER THE CONDUIT PER BEUD SPECIFICATION DS-1403 / 1404 (TYP)
 - 461 CONTRACTOR TO COORDINATE WATER MAIN EXTENSION w/ OFFSITE DESIGN PLANS AND SCHEDULE; REFER TO FILE #3 STREET UTILITY IMPROVEMENTS, HCE PROJECT # 22-2132 / LSO PRODUCT # 22-0069
 - 462 CONTRACTOR SHALL PROVIDE 4" x 4" CONCRETE PAD FOR NATURAL GAS SERVICES; CONTRACTOR SHALL COORDINATE w/ BENTONVILLE UTILITIES TO MINIMIZE TIME CONNECTION IS OFF-LINE
 - 463 CONTRACTOR SHALL PROVIDE 4" x 4" CONCRETE PAD FOR NATURAL GAS METERS TO BE SET ON; PAD SHALL NOT BE MORE THAN 6" AWAY FROM CURB LINE FOR ACCESS BY BLACK HILLS 4" BOLLARDS SHALL BE PLACED AT EACH CORNER OF THE PAD FOR A TOTAL OF 3 BOLLARDS) AND PAINTED TRAFFIC YELLOW
 - 464 FIRE HIGHWAY BOX; LID SHALL BE PAINTED RED AND THE WORD "FIRE" CAST ON THE LID
 - 465 METER TO BE SUPPLIED BY THE BUW; CONTRACTOR SHALL INSTALL SERVICE AND TEST WITH THE MAIN; METER WILL BE PLACED IN SET BY BUW AFTER ACTIVATION OF MAIN

- UTILITY DETAILS**
- 40C FIRE DEPARTMENT CONNECTION
 - 413 SANITARY SEWER CLEAN-OUT
 - 414 CITY OF BENTONVILLE FIRE HYDRANT w/ RETAINER GLANDS STANDARD DETAIL
 - 417 CITY OF BENTONVILLE VALVE BOX, VALVE STEM, & TRACER WIRE INSTALLATION STANDARD DETAIL
 - 418 CITY OF BENTONVILLE METER VAULT FOR 4"-8" METERS STANDARD DETAIL
 - 419 CITY OF BENTONVILLE CUT / CAP STANDARD DETAIL
 - 420 CITY OF BENTONVILLE REDUCED PRESSURE (RP) IRRIGATION ONLY STANDARD DETAIL
 - 501 CITY OF BENTONVILLE SANITARY SEWER CAST-IN-PLACE MANHOLE STANDARD DETAIL
 - 504 CITY OF BENTONVILLE HEAVY DUTY MANHOLE LID & FRAME STANDARD DETAIL

CIVIL
 McDaniel Consulting Engineers, Inc.
 1880 E STEARNS ST
 FAYETTEVILLE, AR 72703
 P: 479.443.2377

LANDSCAPE
 OGD
 115 S. JONES PLACE
 BROOKLYN, NY 11217
 P: 917.553.5886

STRUCTURAL
 Martin Consulting Engineers
 3006 SOUTH WALTON BLVD, STE 312
 BENTONVILLE, AR 72712
 P: 479.407.0545

MEP
 Henderson Engineers
 6346 LEXENA DRIVE, STE 300
 LEXENA, MO 64544
 P: 816.960.8187

SUSTAINABILITY
 SOM
 224 SOUTH MORGAN AVENUE
 CHICAGO, IL 60604
 P: 312.360.4121

SIEMENS - WATYFONDING
 TWO TWELVE
 230 W. 27th ST., SUITE 802
 NEW YORK, NY 10001
 P: 212.254.6870

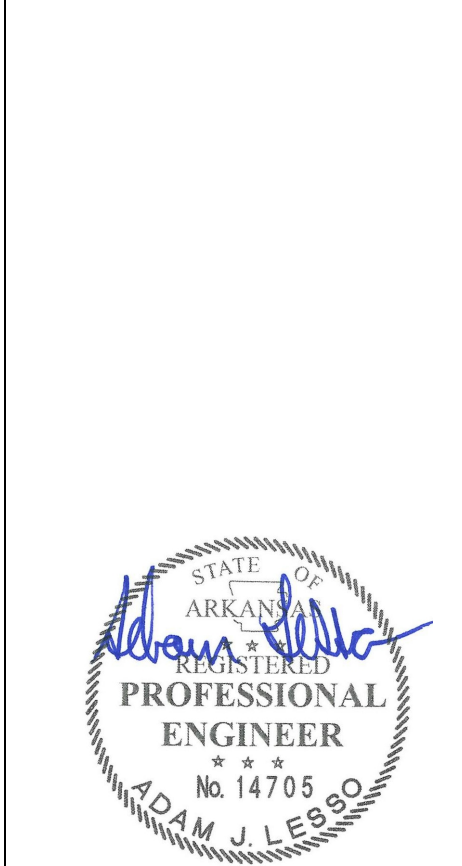
FOOD SERVICE
 JMG HOSPITALITY
 996 S. FRISER DR., SUITE B210
 THE WOODLANDS, TX 77380
 P: 800.841.2222

WATER FEATURES
 OIL
 2105 S. TOWNE CENTER, SUITE 100
 ANAHEIM, CA 92806
 P: 714.637.4747

IRRIGATION
 W3 DESIGN
 11A ROBINSON MANOR BLVD
 MOORESCOPE, PA 14108
 P: 844.231.7042

466 TELECOMMUNICATION VALVE
 PSW Job Number:
 939A
 MCE Job Number:
 21-2185

AWSON
 Bentonville, AR



100% CONSTRUCTION DOCUMENTS
 Issue Date:
2.24.2023

NUMBER	DATE	DESCRIPTION
1	3.13.2023	ADDENDUM 1
2	6.9.2023	ADDENDUM 2

Revisions:
 1. 3.13.2023 ADDENDUM 1
 2. 6.9.2023 ADDENDUM 2

CONCRETE:
 UTILITY PLAN
 (WEST)

CONCRETE:
 UTILITY PLAN
 (WEST)

CONCRETE:
 UTILITY PLAN
 (WEST)

CONCRETE:
 UTILITY PLAN
 (WEST)

CONCRETE:
 UTILITY PLAN
 (WEST)

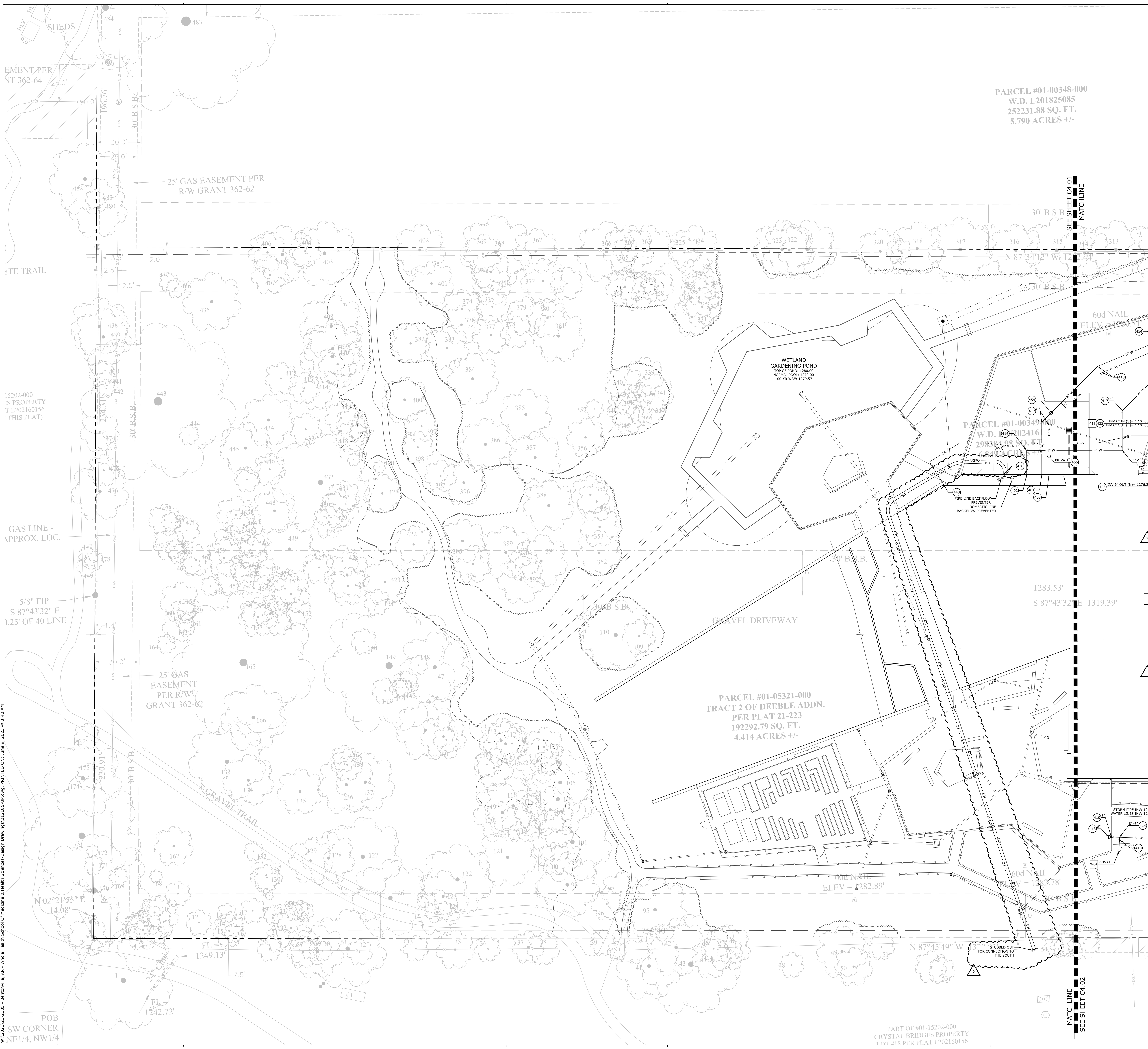
CONCRETE:
 UTILITY PLAN
 (WEST)

CONCRETE:
 UTILITY PLAN
 (WEST)

CONCRETE:
 UTILITY PLAN
 (WEST)

CONCRETE:
 UTILITY PLAN
 (WEST)

CONCRETE:
 UTILITY PLAN
 (WEST)



POB
 SW CORNER
 NE1/4, NW1/4

PART OF #01-15202-000
 CRYSTAL BRIDGES PROPERTY
 LOST #18 PER PLAT L202160156

LSO #22-0068

THIS PAGE IS BEST VIEWED IN COLOR
C4.01

W:\2021\21-2185 - Bentonville, AR - Whole Health School Of Medicine & Health Sciences\Design Drawings\212185-LIP.dwg, PRINTED ON: June 9, 2023 @ 8:40 AM

