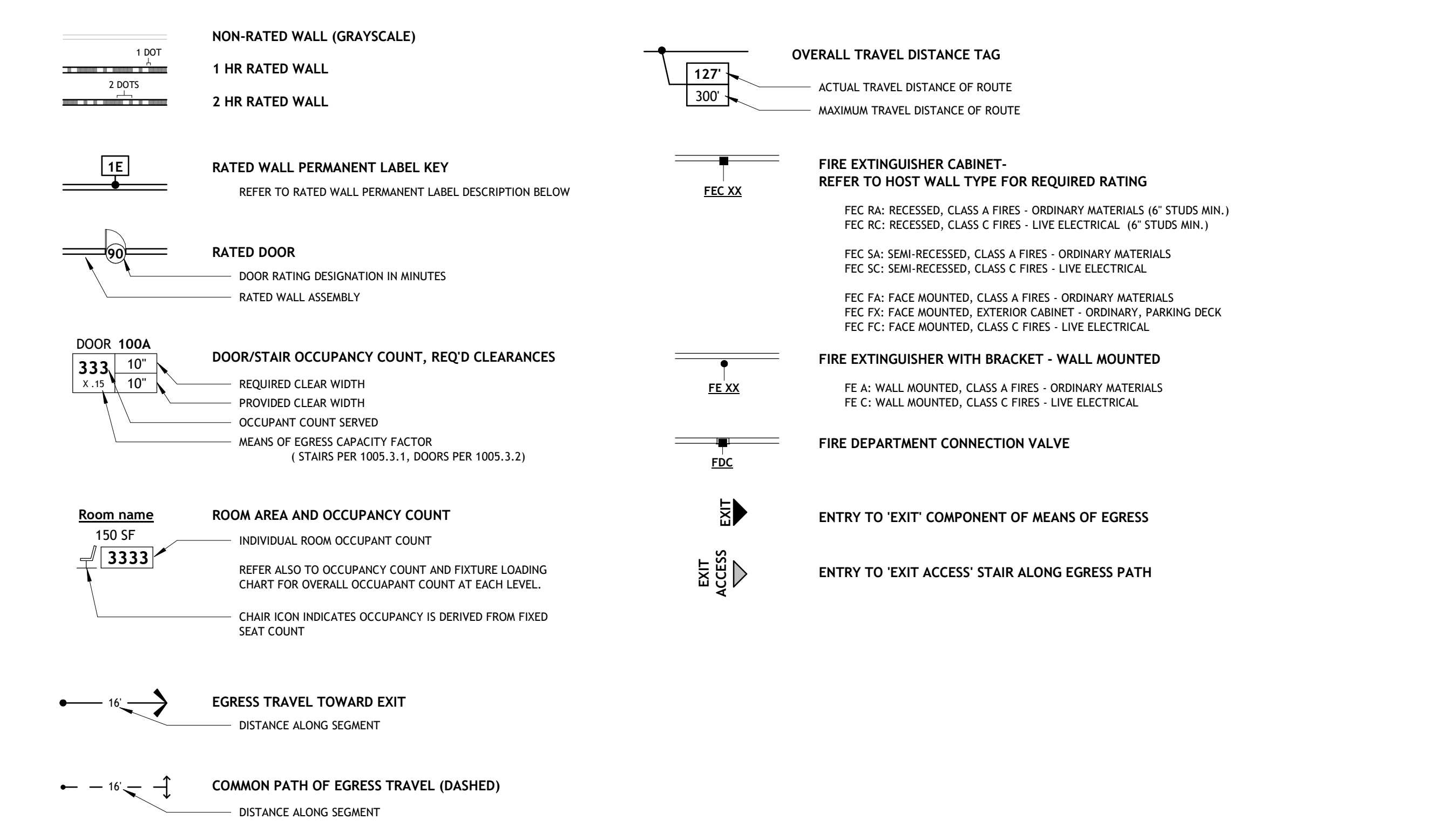




REVISIONS		
NUMBER	DATE	DESCRIPTION
1	03.13.2023	ACCENDAM.1
2	06.09.2023	ACCENDAM.2

LIFE SAFETY LEGEND



RATED WALL PERMANENT LABEL KEY

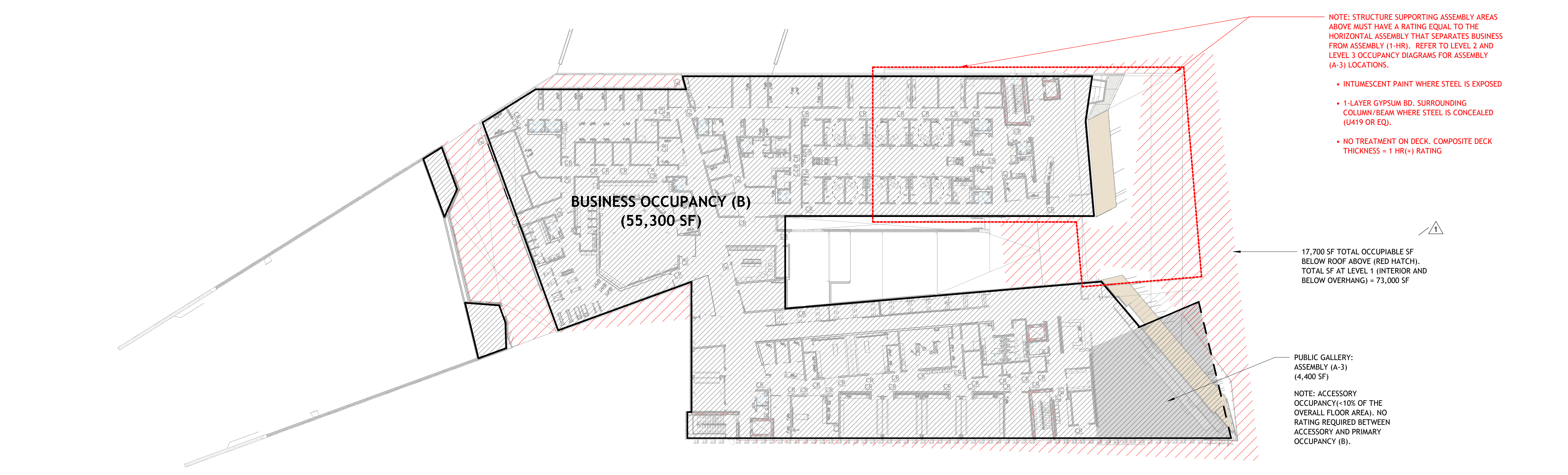
PROVIDE PERMANENT SIGNS OR STENCILING IN ACCESSIBLE CONCEALED FLOOR AND FLOOR-CEILING SPACES FOR ALL RATED WALL ASSEMBLIES. LOCATE LABELS WITHIN 15 FEET OF THE END OF EACH WALL AND AT INTERVALS NOT EXCEEDING 30 FEET MEASURED HORIZONTALLY ALONG THE WALL OR PARTITION. PROVIDE LABELING ON EACH SIDE OF WALL.

REFER TO UNDERLINED PORTIONS OF EXPLANATIONS BELOW FOR LABEL TEXT REQUIRED. REFER TO LIFE SAFETY PLAN FOR LOCATIONS AND EXTENTS.

- 10 1 HR FIRE BARRIER - PROTECT ALL OPENINGS, AT OCCUPANCY SEPARATION WALLS (APFC/IBC SECTION 508.4)
- 15 1 HR FIRE BARRIER - PROTECT ALL OPENINGS, AT SHAFT OR EGRESS CIRCULATION CONNECTING LESS THAN 4 STORIES (APFC/IBC SECTION 713.4/1023.2)
- 17 1 HR FIRE BARRIER - PROTECT ALL OPENINGS, AT FIRE RISER ROOM
- 25 2 HR FIRE BARRIER - PROTECT ALL OPENINGS, AT SHAFT OR EGRESS CIRCULATION CONNECTING 4 OR MORE STORIES (APFC/IBC SECTION 713.4/1023.2)

L1 OCCUPANCY SEPARATION DIAGRAM

FULL BUSINESS OCCUPANCY, LARGE L1 ENTRY ASSEMBLY ROOM DEFINED AS ACCESSORY OCCUPANCY PER APFC 508.2. NO RATING REQUIRED BETWEEN ACCESSORY OCCUPANCY AND MAIN OCCUPANCY ON THIS LEVEL.



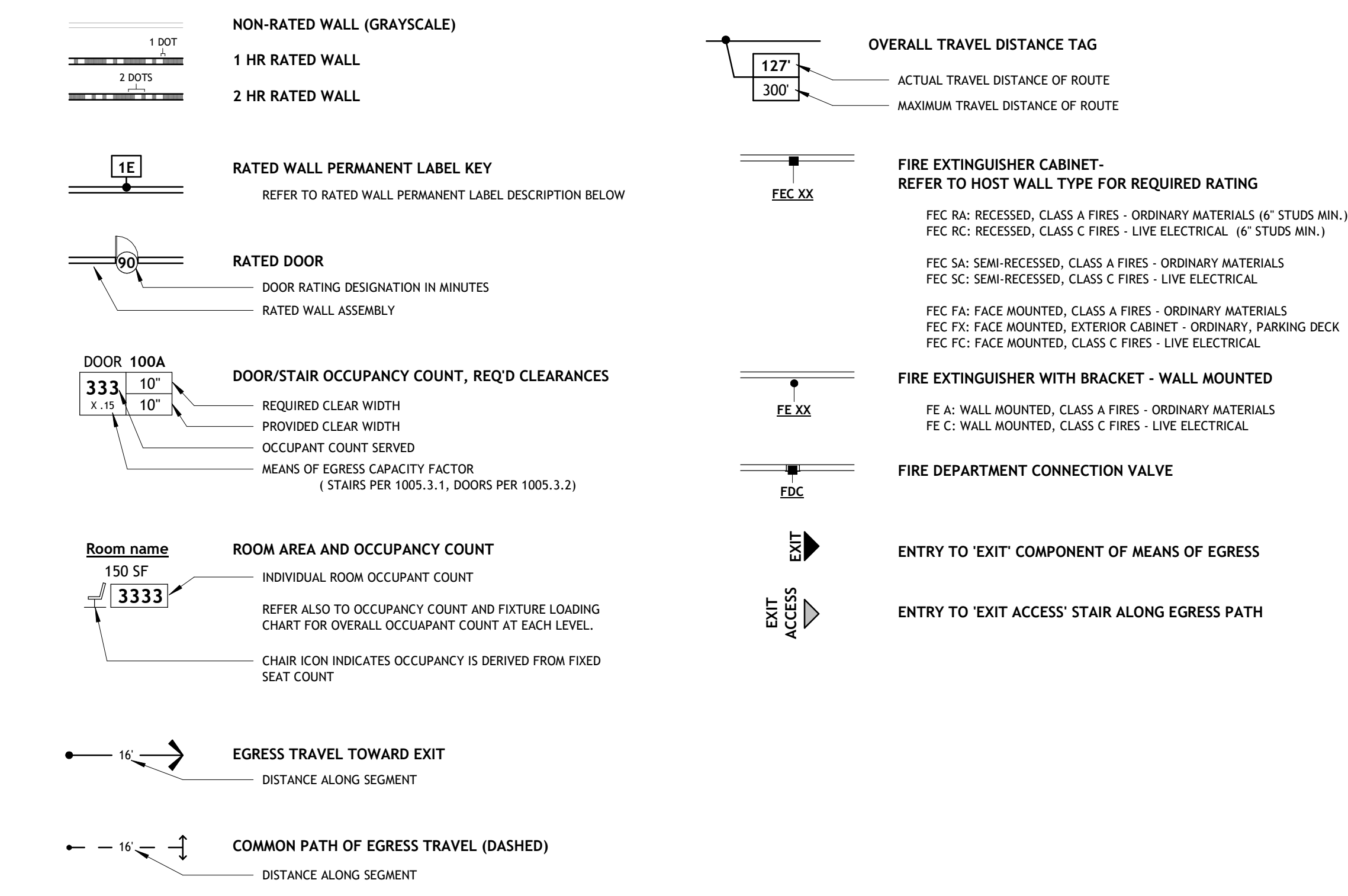
L1 OCCUPANCY COUNT AND FIXTURE LOADING

LEVEL 1 OCCUPANCY CLASSIFICATION		LEVEL 1 FUNCTION OF SPACE BREAKDOWN AND OCCUPANT COUNT				LEVEL 1 PLUMBING FIXTURE COUNTS REQUIRED (AND PROVIDED)										NOTES:					
PER 2021 (DRAFT) ARKANSAS FIRE PREVENTION CODE		PER 2021 (DRAFT) ARKANSAS FIRE PREVENTION CODE				PER 2018 INTERNATIONAL PLUMBING CODE															
BUSINESS (B) ASSEMBLY (A-3) (ACCESSORY, NON-RATED)		OCCUPANCY		FUNCTION OF SPACE (PER APFC 1004.5) REFER TO PLAN BELOW FOR EXTENTS		CLASSIFICATION		TOTAL OCC. IN CLASS.		WATER CLOSETS PER SEX		LAVATORIES		LAVS PER SEX		DRINKING FOUNTAINS		SERVICE SINK			
		BUSINESS (B)		BUSINESS AREAS 32,300 SF @ 100SF / OCC		BUSINESS		697		1:25 FOR FIRST 50, THEN 1:30 @ 697 = 14 REQUIRED		7		1:40 FOR FIRST 50, THEN 1:80 @ 697 = 10 REQUIRED		5		1:100 @ 697 = 7 REQUIRED		1 REQUIRED	
				STORAGE / MECHANICAL / UTILITY 4,785 SF @ 300SF / OCC				16 OCC													
				CLASSROOM AREAS - TYPICAL DENSITY @ 20 SF / OCC (SEE PLAN)				75 OCC													
				CLASSROOM AREAS - LABS, VOCATIONAL @ 50 SF NET / OCC (SEE PLAN)				138 OCC													
				LOCKER/EXERCISE AREAS 2,370 SF @ 30 SF GROSS / OCC				52 OCC													
				ASSEMBLY FUNCTIONS (IN BUSINESS OCCUPANCY) MOVABLE TABLES/CHAIRS @ 15 SF / OCC (SEE PLAN)				91 OCC													
		ASSEMBLY (A-3)		ASSEMBLY FUNCTIONS (IN A-3 OCCUPANCY) MOVABLE TABLES/CHAIRS @ 15 SF / OCC (SEE PLAN) FIXED SEATING AT GALLERY LOBBY (SEE PLAN)		ASSEMBLY (GALLERIES AND AUDITORIUMS)		235		1:125 @ 118 = 1 REQ., 1:145 @ 118 = 2 REQ.		1		1:200 @ 235 = 2 REQUIRED		1		1:1000 @ 235 = 1 REQUIRED			
		TOTAL L1 OCCUPANCY						= 932 OCC		TOTAL TOILETS REQUIRED: 8		9		TOTAL LAVS REQUIRED: 6		6		TOTAL DF REQUIRED = 8		TOTAL SS REQUIRED = 1	
										TOTAL TOILETS PROVIDED: 12		13		TOTAL LAVS PROVIDED: 11		11		TOTAL DF PROVIDED = 8		TOTAL SS PROVIDED = 1	

L1 - LIFE SAFETY PLAN
1/16" = 1'-0"



LIFE SAFETY LEGEND



RATED WALL PERMANENT LABEL KEY

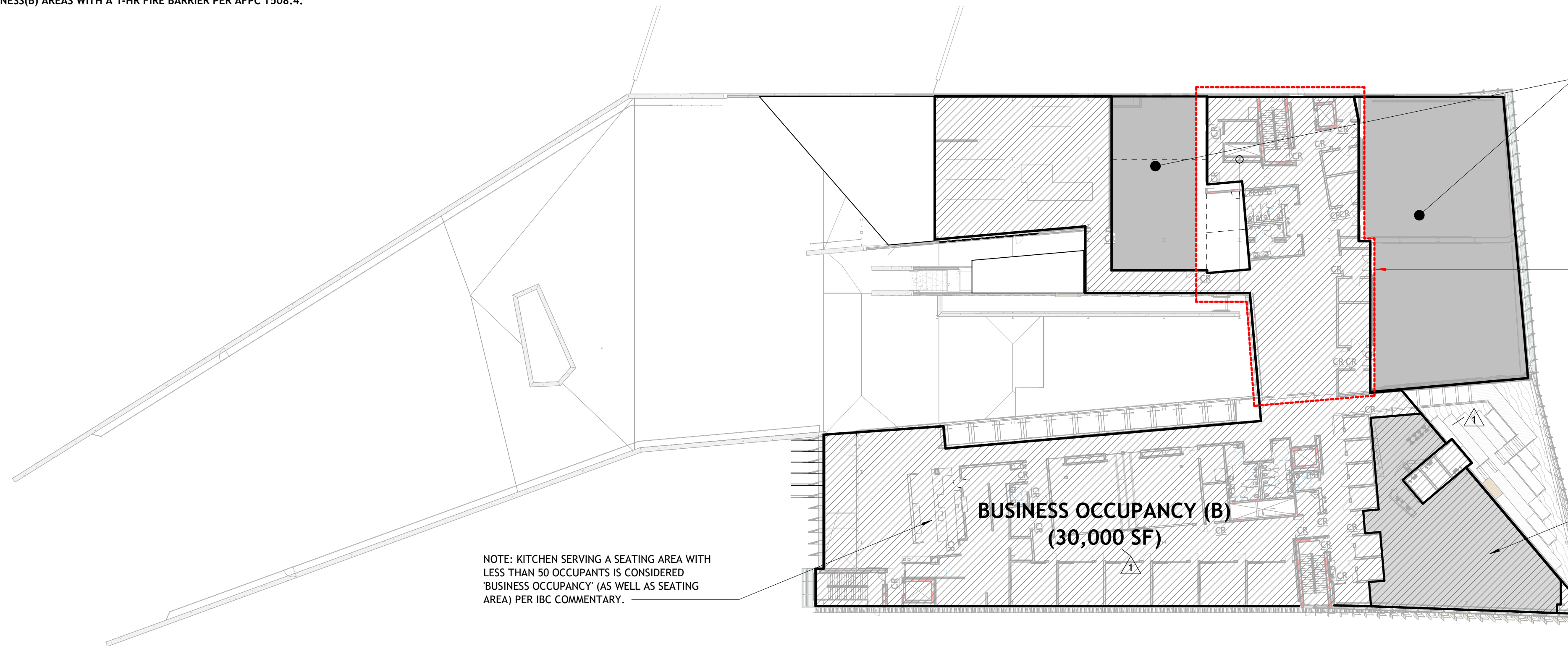
PROVIDE PERMANENT SIGNS OR STENCILING IN ACCESSIBLE FLOOR AND FLOOR-CEILING SPACES FOR ALL RATED WALL ASSEMBLIES. LOCATE LABELS WITHIN 15 FEET OF THE END OF EACH WALL AND AT INTERVALS NOT EXCEEDING 30 FEET MEASURED HORIZONTALLY ALONG THE WALL OR PARTITION. PROVIDE LABELING ON EACH SIDE OF WALL.

REFER TO UNDERLINED PORTIONS OF EXPLANATIONS BELOW FOR LABEL TEXT REQUIRED. REFER TO LIFE SAFETY PLAN AT EACH FLOOR LEVEL FOR LOCATIONS AND EXTENTS.

- 10 1 HR FIRE BARRIER - PROTECT ALL OPENINGS, AT OCCUPANCY SEPARATION WALLS (AFPC/IBC SECTION 508.4)
- 15 1 HR FIRE BARRIER - PROTECT ALL OPENINGS, AT SHAFT OR EGRESS CIRCULATION CONNECTING LESS THAN 4 STORIES (AFPC/IBC SECTION 713.4/1023.2)
- 17 1 HR FIRE BARRIER - PROTECT ALL OPENINGS, AT FIRE RISER ROOM
- 25 2 HR FIRE BARRIER - PROTECT ALL OPENINGS, AT SHAFT OR EGRESS CIRCULATION CONNECTING 4 OR MORE STORIES (AFPC/IBC SECTION 713.4/1023.2)

L2 OCCUPANCY SEPARATION DIAGRAM

LEVEL TWO OCCUPANCY IS 'MIXED USE, SEPARATED' AS DEFINED IN AFPC 508.4. NON-ACCESSORY A-3 AREAS SHALL BE SEPARATED FROM BUSINESS(B) AREAS WITH A 1-HR FIRE BARRIER PER AFPC 508.4.



LARGE CLASSROOMS : ASSEMBLY (A-3) (10,000 SF)

NOTE: LARGE CLASSROOMS SHALL BE SEPARATED FROM BUSINESS AREAS WITH A 1-HR RATED WALL PER AFPC 508.4.

NOTE: STRUCTURE SUPPORTING ASSEMBLY AREAS ABOVE MUST HAVE A RATING EQUAL TO THE HORIZONTAL ASSEMBLY THAT SEPARATES BUSINESS FROM ASSEMBLY (1-HR). REFER TO LEVEL 2 AND LEVEL 3 OCCUPANCY DIAGRAMS FOR ASSEMBLY (A-3) LOCATIONS.

• INTUMESCENT PAINT WHERE STEEL IS EXPOSED

• 1-LAYER GYPSUM BD. SURROUNDING COLUMN/BEAM WHERE STEEL IS CONCEALED (1/4" OR EQ.)

• NO TREATMENT ON DECK. COMPOSITE DECK THICKNESS = 1 HR+1 RATING

LIBRARY STUDY ROOM : ASSEMBLY (A-3) (3,410 SF)

NOTE: ACCESSORY OCCUPANCY (<10% OF THE OVERALL FLOOR AREA). THE RATING REQUIRED BETWEEN ACCESSORY AND PRIMARY OCCUPANCY (B).

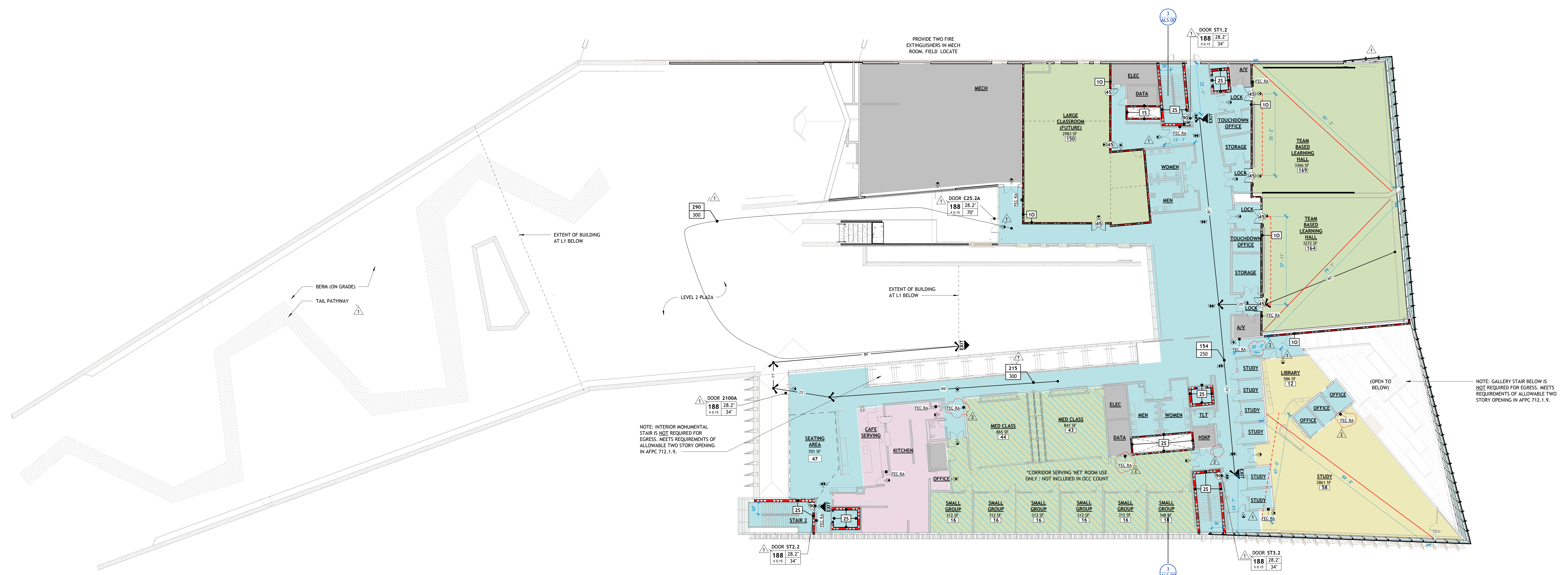
L2 OCCUPANCY COUNT AND FIXTURE LOADING

LEVEL 2 OCCUPANCY CLASSIFICATION		LEVEL 2 FUNCTION OF SPACE BREAKDOWN AND OCCUPANT COUNT				LEVEL 2 PLUMBING FIXTURE COUNTS REQUIRED (AND PROVIDED)										NOTES:		
PER 2021 (DRAFT) ARKANSAS FIRE PREVENTION CODE		PER 2021 (DRAFT) ARKANSAS FIRE PREVENTION CODE				PER 2018 INTERNATIONAL PLUMBING CODE												
		OCCUPANCY	FUNCTION OF SPACE (PER AFPC 1004.5) REFER TO PLAN BELOW FOR EXTENTS	OCCUPANCY PER ACTUAL USE OF SPACE	CLASSIFICATION	TOTAL OCC. IN CLASS.	WATER CLOSETS	WATER CLOSETS PER SEX	LAVATORIES	LAVS PER SEX	DRINKING FOUNTAINS	SERVICE SINK						
BUSINESS (B)																		
	ASSEMBLY (A-3) (ACCESSORY, AT LIBRARY)																	
	ASSEMBLY (A-3) (1-HR SEPARATED, AT LARGE CLASSROOMS)																	
		BUSINESS (B)	BUSINESS AREAS - TYPICAL LOADING 15,463 SF @ 100 SF / OCC	127 OCC	BUSINESS	390	1:25 FOR FIRST 50, THEN 1:50 @ 300 = 9 REQUIRED	5	5	1:40 FOR FIRST 80, THEN 1:80 @ 300 = 6 REQUIRED	3	3	1:100 @ 300 = 4 REQUIRED	1 REQUIRED				
			KITCHEN SEATING (UNDER 50 OCC, BUSINESS CATEGORY) @ 15 SF / OCC (SEE PLAN)	47 OCC														
			STORAGE / MECHANICAL / UTILITY 4,720 SF @ 300 SF / OCC	16 OCC														
			CLASSROOM AREAS (UNDER 50 PEOPLE, BUSINESS OCCUPANCY) @ 20 SF / OCC (SEE PLAN)	190 OCC														
			COMMERCIAL KITCHEN 1,856 SF @ 200 SF / OCC	10 OCC														
			LIBRARY + STUDY ROOM (READING ROOMS) @ 50 SF / OCC (SEE PLAN)	67 OCC	ASSEMBLY (A-3)	550	1:125 @ 275 = 3 REQ.	1:65 @ 275 = 5 REQ.	3	5	1:200 @ 550 = 3 REQUIRED	2	2	1:1000 @ 550 = 1 REQUIRED				
			CLASSROOM AREAS (OVER 50 PEOPLE) @ 20 SF / OCC (SEE PLAN)	483 OCC														
		TOTAL L2 OCCUPANCY		= 940 OCC			TOTAL TOILETS REQUIRED		7	9	TOTAL LAVS REQUIRED		5	5	TOTAL DF REQUIRED = 5		TOTAL SS REQUIRED = 1	
							TOTAL TOILETS PROVIDED		8	9	TOTAL LAVS PROVIDED		7	7	TOTAL DF PROVIDED = 6		TOTAL SS PROVIDED = 2	

1. THE MOST APPROPRIATE 'FUNCTION OF SPACE' FOR AREAS NOTED AS CLASSROOM USE OR 'SMALL GROUP' PER AFPC 1004.1.2 IS EDUCATION, CLASSROOM (20 SF/OCC), WHERE OCCUPANT COUNT EXCEEDS 50, AN OCCUPANCY TYPE OF A-3 IS ASSIGNED TO THE ROOM AND SEPARATED FROM BUSINESS OCCUPANCIES WITH A 1-HR WALL.

2. EACH TEAM BASED LEARNING HALL IS DESIGNED FOR 96 STUDENTS (FULL STUDENT CLASS) WHO WILL COLLABORATE AROUND LARGE MOVABLE TABLE GROUPINGS. THIS UNIQUE SETUP REQUIRES MORE SQUARE FOOTAGE THAN TYPICAL EDUCATION CLASSROOMS. LIFE SAFETY OCCUPANT COUNT SHOWN IS SIGNIFICANTLY LARGER THAN EXPECTED, BUT ACCOUNTED FOR IN THE SIZING OF EGRESS ELEMENTS.

1 | L2 - LIFE SAFETY PLAN
 1/16" = 1'-0"



801 South Spring Street
 Little Rock, AR 72201
 501.378.0878 office
 509 W. Spring St. | Suite 150
 Fayetteville, AR 72701
 479.444.0633 office
 polkstanleywilcox.com

CIVIL
 McCalland Consulting Engineers, Inc.
 1580 E STEPHENS ST
 FAYETTEVILLE, AR 72703
 P: 479.443.2377

LANDSCAPE
 OSD
 115 ST. JOHNS PLACE
 BROOKLYN, NY 11217
 P: 917.553.5886

STRUCTURAL
 Martin Consulting Engineers
 808 SOUTH WALTON BLVD., STE 27
 BENTONVILLE, AR 72712
 P: 479.493.9946

MEPP - LOW VOLTAGE
 Henderson Engineers
 8346 LENSEA DRIVE, STE 300
 LENOXA, MS 39214
 P: 913.660.8187

SUSTAINABILITY
 SOM
 224 SOUTH MICHIGAN AVENUE
 CHICAGO, IL 60604
 P: 312.360.4121

SIGNAGE - WAYFINDING
 TWO TWELVE
 238 W. 27th ST., SUITE 802
 NEW YORK, NY 10001
 P: 212.254.8670

FOOD SERVICE
 JMC HOSPITALITY
 8556 SIX PINES DR., SUITE 8210
 THE WOODLANDS, TX 77380
 P: 684.841.2222

WATER FEATURES
 OTL
 2150 S. TOWNE CENTER, SUITE 100
 ANAHEIM, CA 92806
 P: 714.637.4747

IRRIGATION
 WC3 DESIGN
 11A HOBSON MANOR BLVD.
 MOORESCO, PA 14135
 P: 844.231.7042

PSW Job Number:
993A

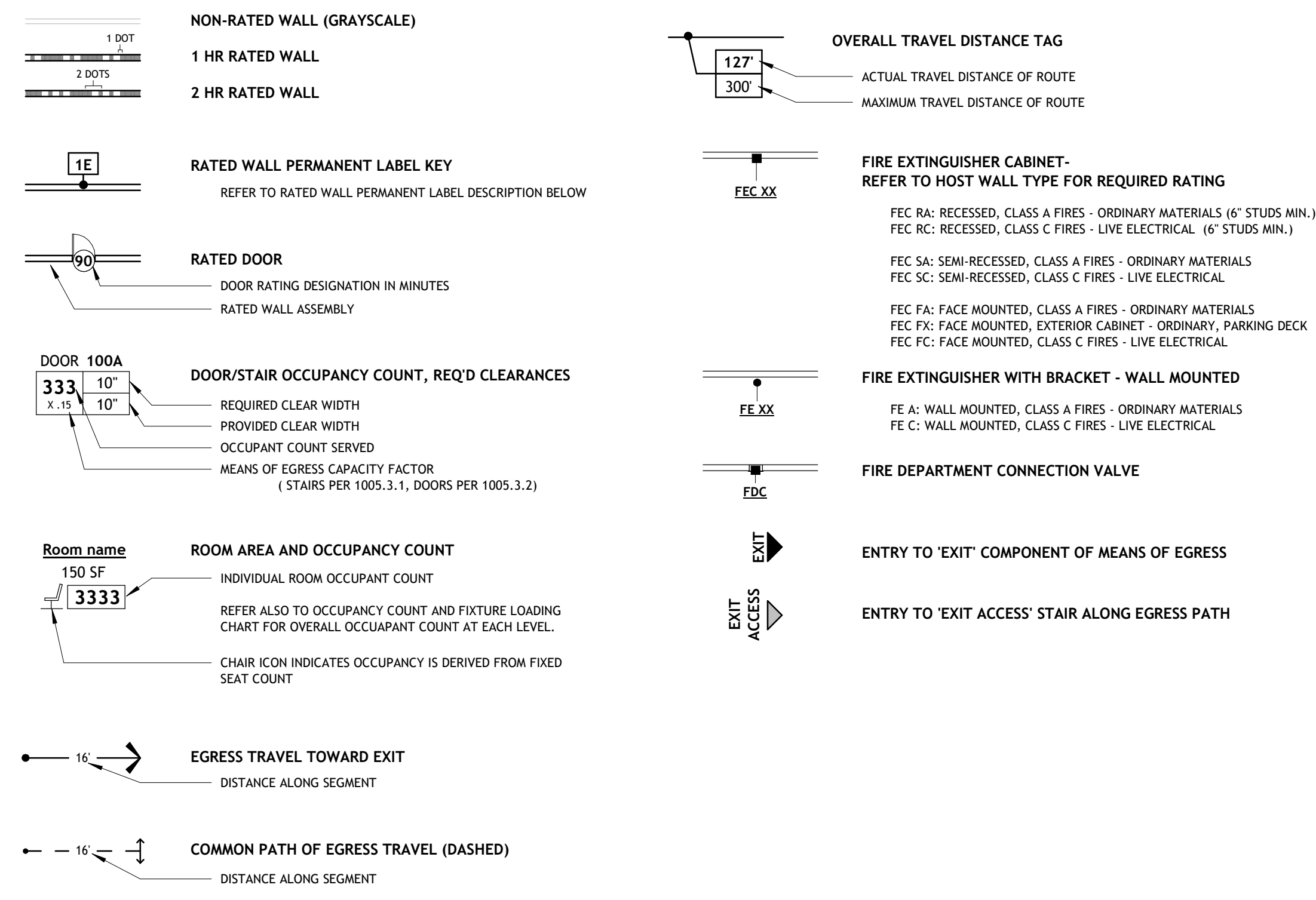


Issue Date:
02.24.2023

REVISIONS		
NUMBER	DATE	DESCRIPTION
1	03.13.2023	ACKENDIAN 1
2	06.09.2023	ACKENDIAN 2

Consents:
LIFE SAFETY PLAN - LEVEL 2

LIFE SAFETY LEGEND



RATED WALL PERMANENT LABEL KEY

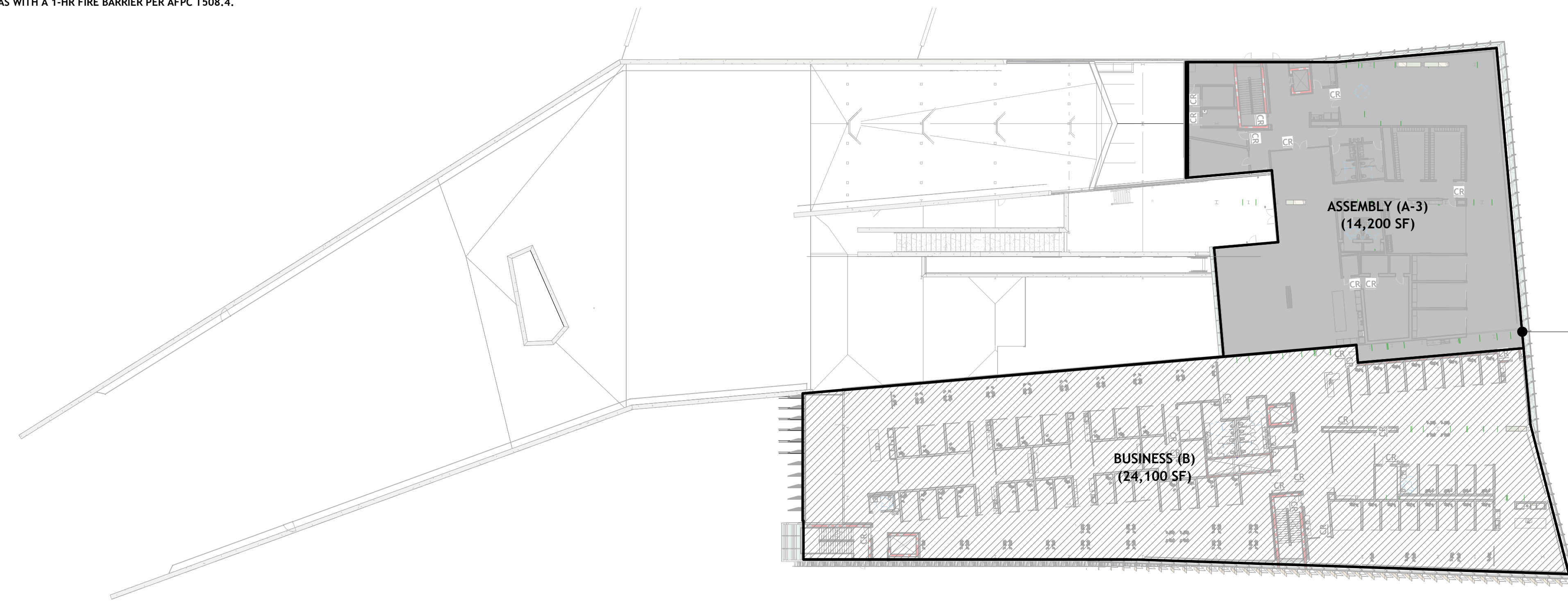
PROVIDE PERMANENT SIGNS OR STENCILING IN ACCESSIBLE CONCEALED FLOOR AND FLOOR-CEILING SPACES FOR ALL RATED WALL ASSEMBLIES. LOCATE LABELS WITHIN 15 FEET OF THE END OF EACH WALL AND AT INTERVALS NOT EXCEEDING 30 FEET MEASURED HORIZONTALLY ALONG THE WALL OR PARTITION. PROVIDE LABELING ON EACH SIDE OF WALL.

REFER TO UNDERLINED PORTIONS OF EXPLANATIONS BELOW FOR LABEL TEXT REQUIRED. REFER TO LIFE SAFETY PLAN AT EACH FLOOR LEVEL FOR LOCATIONS AND EXTENTS.

- 10 1 HR FIRE BARRIER - PROTECT ALL OPENINGS, AT OCCUPANCY SEPARATION WALLS (AFPC/IBC SECTION 508.4)
- 15 1 HR FIRE BARRIER - PROTECT ALL OPENINGS, AT SHAFT OR EGRESS CIRCULATION CONNECTING LESS THAN 4 STORIES (AFPC/IBC SECTION 713.4/1023.2)
- 17 1 HR FIRE BARRIER - PROTECT ALL OPENINGS, AT FIRE RISER ROOM
- 25 2 HR FIRE BARRIER - PROTECT ALL OPENINGS, AT SHAFT OR EGRESS CIRCULATION CONNECTING 4 OR MORE STORIES (AFPC/IBC SECTION 713.4/1023.2)

L3 OCCUPANCY SEPARATION DIAGRAM

LEVEL THREE OCCUPANCY IS 'MIXED USE, SEPARATED' AS DEFINED IN AFPC 508.4. A-3 AREAS SHALL BE SEPARATED FROM BUSINESS(B) AREAS WITH A 1-HR FIRE BARRIER PER AFPC 7008.4.



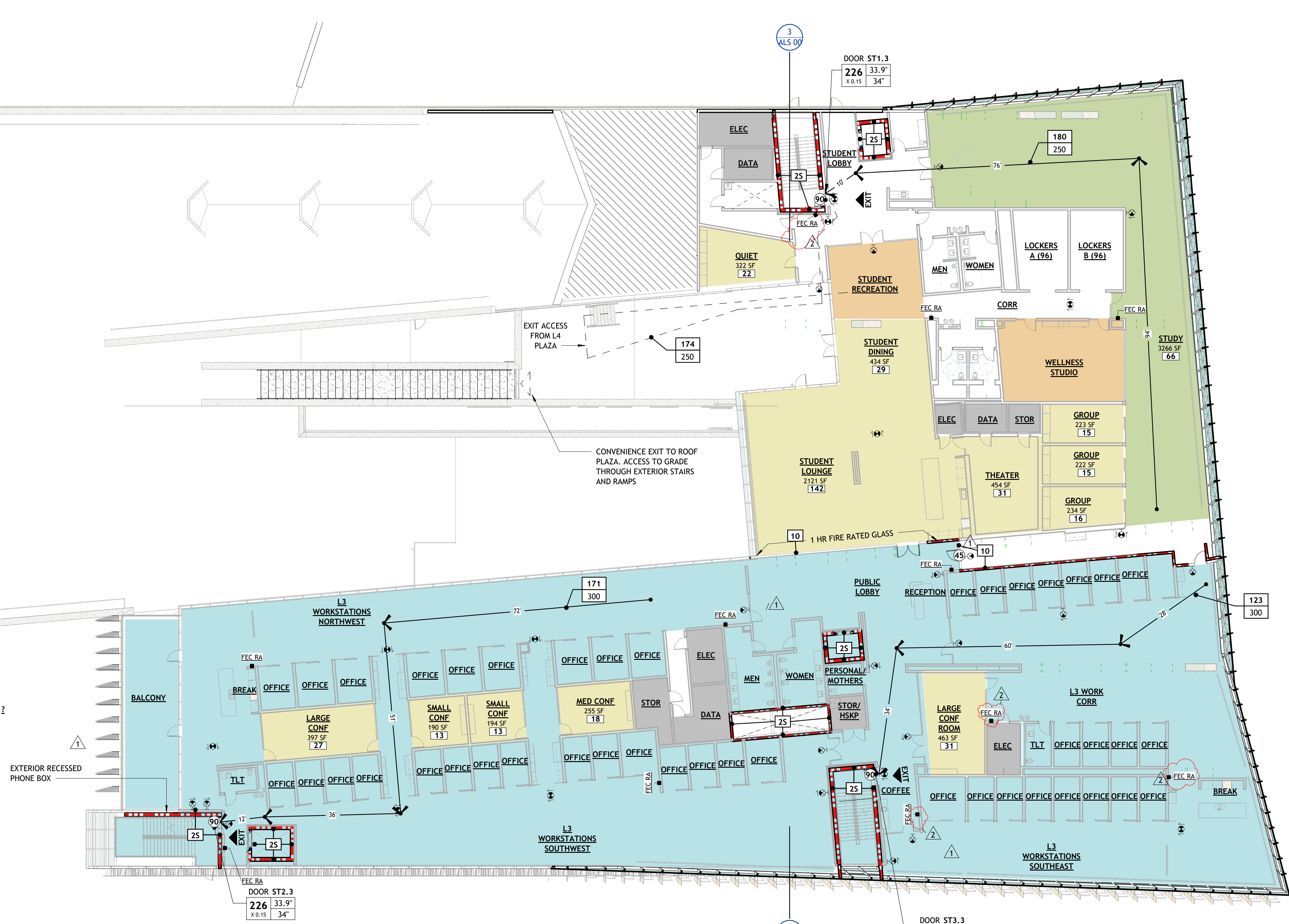
L3 LIFE SAFETY FLOOR AREA = 38,300 SF

L3 OCCUPANCY COUNT AND FIXTURE LOADING

LEVEL 3 OCCUPANCY CLASSIFICATION PER 2021 (DRAFT) ARKANSAS FIRE PREVENTION CODE	LEVEL 3 FUNCTION OF SPACE BREAKDOWN AND OCCUPANT COUNT PER 2021 (DRAFT) ARKANSAS FIRE PREVENTION CODE		LEVEL 3 PLUMBING FIXTURE COUNTS REQUIRED (AND PROVIDED) PER 2018 INTERNATIONAL PLUMBING CODE										NOTES:				
	OCCUPANCY CLASSIFICATION	FUNCTION OF SPACE (REFER TO PLAN BELOW FOR EXTENTS) PER AFPC 1004.5	OCCUPANCY PER ACTUAL USE OF SPACE	CLASSIFICATION	TOTAL OCC. IN CLASS.	WATER CLOSETS		LAVATORIES		LAVS PER SEX		DRINKING FOUNTAINS		SERVICE SINK			
						MALE	FEMALE	M	F	MALE	FEMALE	M	F				
BUSINESS (B) ASSEMBLY (A-3) (1-HR SEPARATED, AT STUDENT AREA)	10	BUSINESS AREAS - TYPICAL LOADING 21,000 SF @ 100 SF / OCC	211 OCC	BUSINESS	314	1:25 FOR FIRST 50, THEN 1:50 @ 314 = 8 REQUIRED		4	4	1:40 FOR FIRST 80, THEN 1:80 @ 314 = 5 REQUIRED		3	3	1:100 @ 314 = 4 REQUIRED	1 REQUIRED		
	15	STORAGE / MECHANICAL / UTILITY 740 SF @ 300 SF / OCC	3 OCC														
	17	ASSEMBLY AREAS - CONFERENCE ROOMS @ 15 SF / OCC (SEE PLAN)	100 OCC														
	17	STUDY ROOM (LIBRARY READING ROOM, SIMILAR) @ 15 SF / OCC (SEE PLAN)	66 OCC														
	17	ASSEMBLY AREAS - MISC UNCONCENTRATED @ 15 SF / OCC (SEE PLAN)	270 OCC														
	25	EXERCISE AREAS 1230 @ 50 SF GROSS / OCC	25 OCC	ASSEMBLY (LECTURE, GYM, JUDO, etc.)	363	1:125 @ 182 = 2 REQ.	1:65 @ 182 = 3 REQ.	2	3	1:200 @ 363 = 2 REQUIRED		1	1	1:500 @ 363 = 1 REQUIRED			
		STORAGE / MECHANICAL / UTILITY 545 SF @ 300 SF / OCC	2 OCC														
TOTAL L3 OCCUPANCY			= 677 OCC			TOTAL TOILETS REQUIRED = 6		8		TOTAL LAVS REQUIRED = 4		4		TOTAL DF REQUIRED = 5		TOTAL SS REQUIRED = 1	
						TOTAL TOILETS PROVIDED = 6		10		TOTAL LAVS PROVIDED = 7		7		TOTAL DF PROVIDED = 8		TOTAL SS PROVIDED = 1	

L3 - LIFE SAFETY PLAN

1/16" = 1'-0"



POLK STANLEY WILCOX
 801 South Spring Street
 Little Rock, AR 72201
 501.378.0878 office
 509 W. Spring St. Suite 150
 Fayetteville, AR 72701
 479.444.0623 office
 polkstanleywilcox.com

CIVIL
 McCalland Consulting Engineers, Inc.
 1580 E STEARNS ST
 FAYETTEVILLE, AR 72703
 P: 479.443.2377

LANDSCAPE
 OSD
 115 ST. JOHNS PLACE
 BROOKLYN, NY 11217
 P: 917.553.5886

STRUCTURAL
 Martin Consulting Engineers
 8008 SOUTH WALTON BLVD., STE 27
 BENTONVILLE, AR 72712
 P: 479.493.0945

MEPF - LOW VOLTAGE
 Henderson Engineers
 8346 LENEZA DRIVE, STE 300
 LENOIRA, NC 28624
 P: 913.606.8187

SUSTAINABILITY
 SOM
 224 SOUTH MICHIGAN AVENUE
 CHICAGO, IL 60604
 P: 312.362.4121

SIGNAGE + WAYFINDING
 TWO TWELVE
 238 W. 23RD ST., SUITE 802
 NEW YORK, NY 10001
 P: 212.254.9870

FOOD SERVICE
 JMC HOSPITALITY
 8956 SIX PINES DR., SUITE 8210
 THE WOODLANDS, TX 77380
 P: 684.841.2222

WATER FEATURES
 OTL
 2150 S. TOWNE CENTER, SUITE 100
 ANAHEIM, CA 92806
 P: 714.637.4747

IRRIGATION
 WC3 DESIGN
 11A HOBSON MANOR BLVD.
 ROCKESIDE, PA 14135
 P: 844.231.7042

PSW Job Number:
993A

AWSOM
 Bentonville, AR

Issue Date:
02.24.2023

REVISIONS		
NUMBER	DATE	DESCRIPTION
1	03.13.2023	ADDENDUM 1
2	06.09.2023	ADDENDUM 2

Consents:
LIFE SAFETY PLAN - LEVEL 3

THIS PAGE IS BEST VIEWED IN COLOR
ALS 03

02/24/2023 10:52 AM
 C:\PROJECTS\2023\230224\230224.dwg
 1/16" = 1'-0"