



AIA[®] Document G709[™] – 2018

Proposal Request

PROJECT: *(name and address)*
AWSOM
Bentonville, Arkansas

CONTRACT INFORMATION:
Contract For: General Construction
Date: 11.29.2021

Architect's Project Number: 993A
Proposal Request Number: 121
Proposal Request Date: 02.26.2025

OWNER: *(name and address)*
AWSOM Lands, LLC
PO Box 2030
Bentonville, AR 72712

ARCHITECT: *(name and address)*
Polk Stanley Wilcox
509 W. Spring St., Ste 150
Fayetteville, AR 72701

CONTRACTOR: *(name and address)*
Crossland Construction Company
1800 S. 52nd Street, Suite 410
Rogers, AR 72758

The Owner requests an itemized proposal for changes to the Contract Sum and Contract Time for proposed modifications to the Contract Documents described herein. The Contractor shall submit this proposal within five (5) days or notify the Architect in writing of the anticipated date of submission.

(Insert a detailed description of the proposed modifications to the Contract Documents and, if applicable, attach or reference specific exhibits.)

Refer to the attached Proposal Request 121 Narrative listing revised drawings with brief description of changes.

THIS IS NOT A CHANGE ORDER, A CONSTRUCTION CHANGE DIRECTIVE, OR A DIRECTION TO PROCEED WITH THE WORK DESCRIBED IN THE PROPOSED MODIFICATIONS.

REQUESTED BY THE ARCHITECT:

Mark Herrmann, AIA

PRINTED NAME AND TITLE

PROPOSAL REQUEST 121

RFI 584 Revisions to Meter Vault

ISSUED: February 26, 2025

PROJECT: AWSOM
BENTONVILLE, AR

FROM ARCHITECT: POLK STANLEY WILCOX ARCHITECTS
801 SOUTH SPRING ST.
LITTLE ROCK AR 72201

TO CONTRACTOR: CROSSLAND CONSTRUCTION COMPANY, INC

PROPOSAL REQUEST 121 BRIEF

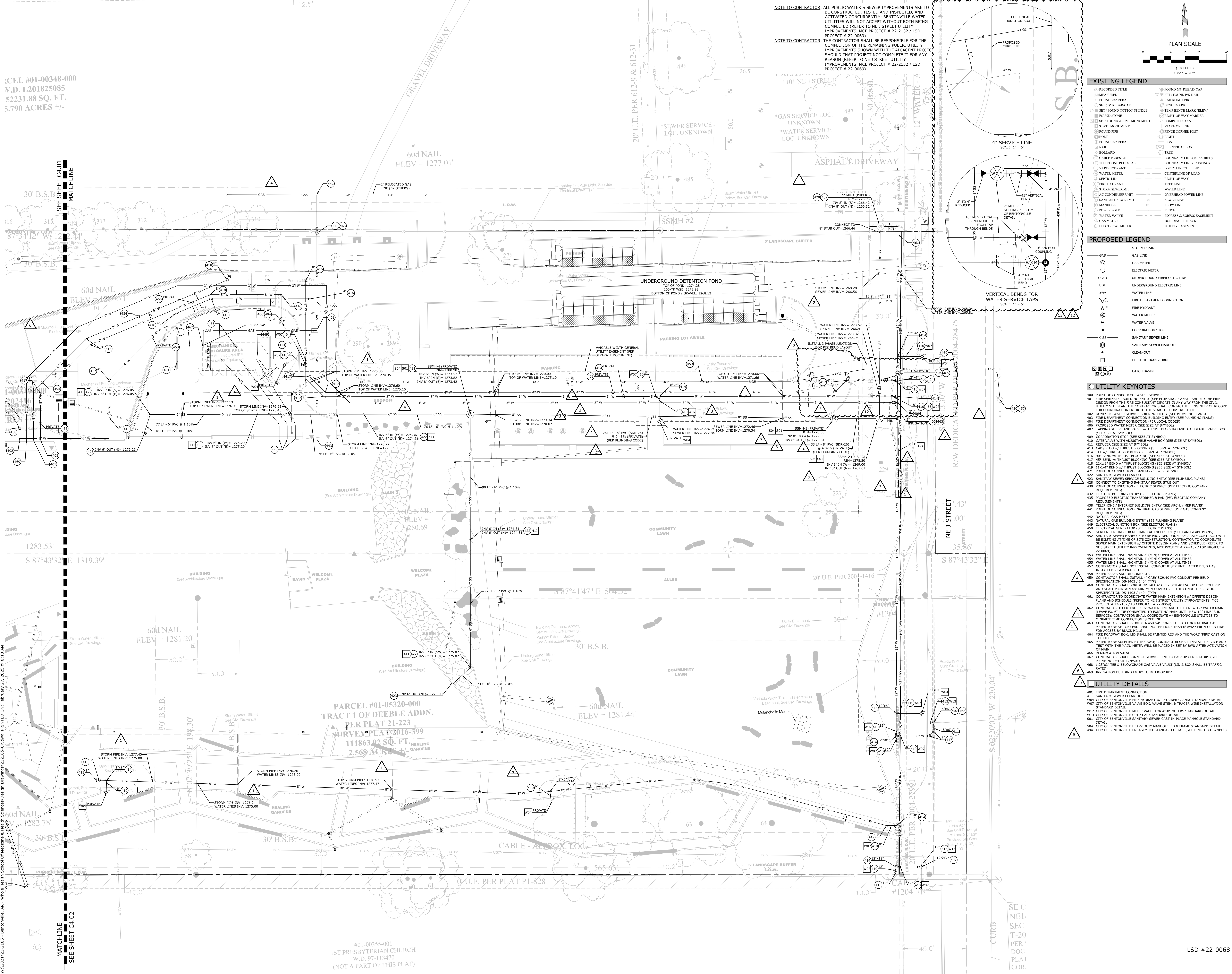
This PR revises the meter vault in response to RFI 584.

REVISED DRAWING SHEETS

- 1) **CIVIL**
 - a) Refer to Revised Sheet **C4.02**, with original issue date 02.24.2023 and revised date 02.26.2025.
 - Revised 4" meter into 2" meter.

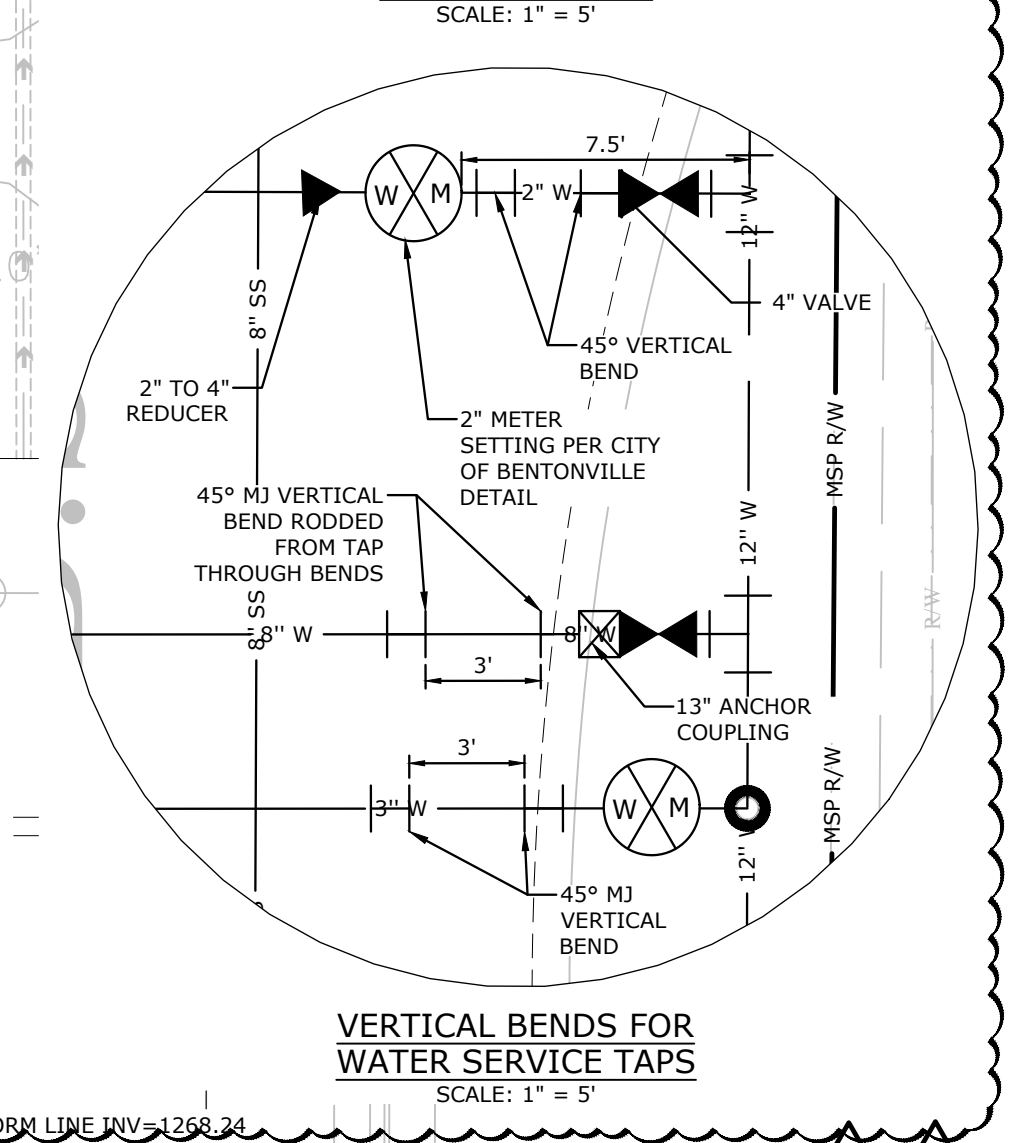
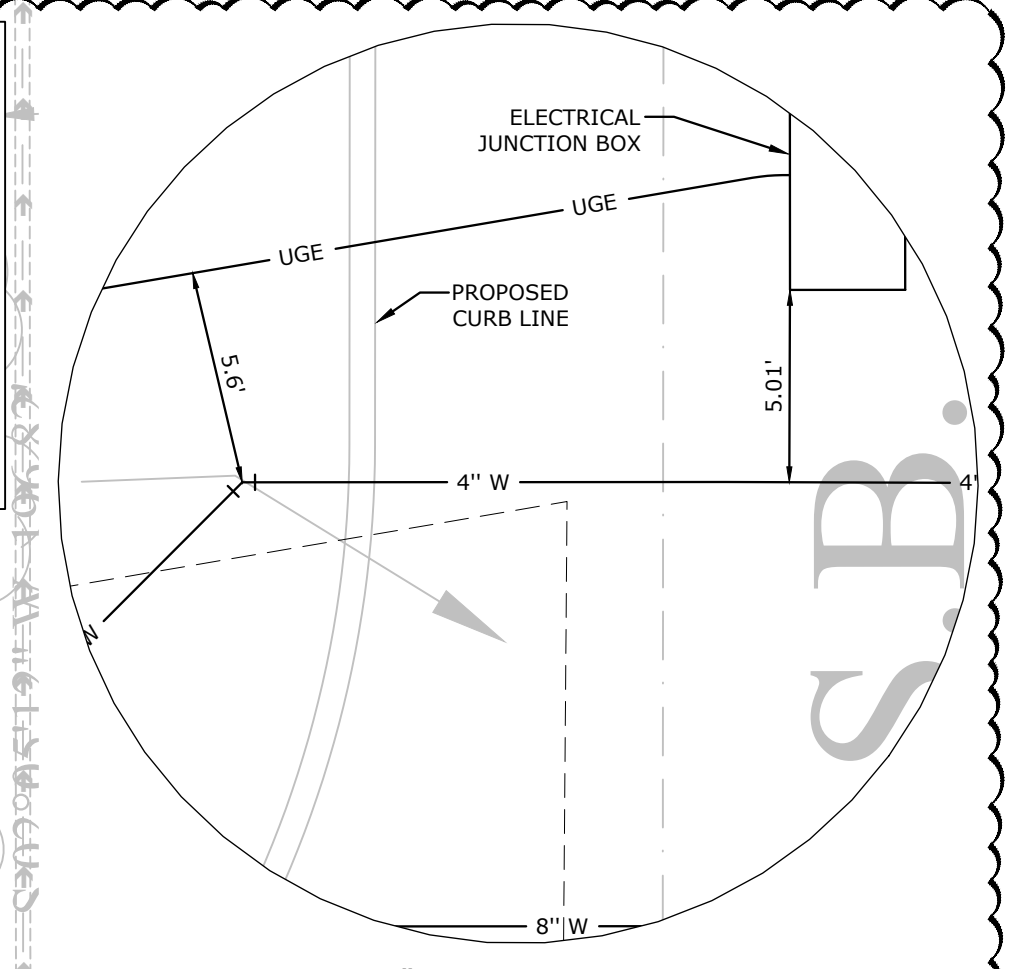
End of PR 121

CEL #01-00348-000
 V.D. L201825085
 52231.88 SQ. FT.
 5.790 ACRES +/-



NOTE TO CONTRACTOR: ALL PUBLIC WATER & SEWER IMPROVEMENTS ARE TO BE CONSTRUCTED, TESTED AND INSPECTED, AND ACTIVATED CONCURRENTLY; BENTONVILLE WATER UTILITIES WILL NOT ACCEPT WITHOUT BOTH BEING COMPLETED (REFER TO NE J STREET UTILITY IMPROVEMENTS, MCE PROJECT # 22-2132 / LSO PROJECT # 22-0069).

NOTE TO CONTRACTOR: THE CONTRACTOR SHALL BE RESPONSIBLE FOR THE COMPLETION OF THE REMAINING PUBLIC UTILITY IMPROVEMENTS SHOWN WITH THE ADJACENT PROJECT SHOULD THAT PROJECT NOT COMPLETE IT FOR ANY REASON (REFER TO NE J STREET UTILITY IMPROVEMENTS, MCE PROJECT # 22-2132 / LSO PROJECT # 22-0069).



- EXISTING LEGEND**
- RECORDED TITLE
 - MEASURED
 - FOUND 5\"/>

- PROPOSED LEGEND**
- STORM DRAIN
 - GAS LINE
 - GAS METER
 - ELECTRIC METER
 - UNDERGROUND FIBER OPTIC LINE
 - UNDERGROUND ELECTRIC LINE
 - WATER LINE
 - FIRE DEPARTMENT CONNECTION
 - FIRE HYDRANT
 - WATER METER
 - WATER VALVE
 - CORPORATION STOP
 - SANITARY SEWER LINE
 - CLEAN OUT
 - ELECTRIC TRANSFORMER
 - CATCH BASIN

- UTILITY KEYNOTES**
- POINT OF CONNECTION - WATER SERVICE
 - FIRE SPRINKLER BUILDING ENTRY (SEE PLUMBING PLANS) - SHOULD THE FIRE DEPARTMENT BUILDING ENTRY (SEE PLUMBING PLANS) BE IN ANY WAY FROM THE CIVIL UTILITY SITE PLAN, THE CONTRACTOR SHALL CONTACT THE ENGINEER OF RECORD FOR COORDINATION PRIOR TO THE START OF CONSTRUCTION
 - DOMESTIC WATER SERVICE BUILDING ENTRY (SEE PLUMBING PLANS)
 - FIRE DEPARTMENT CONNECTION BUILDING ENTRY (SEE PLUMBING PLANS)
 - PROPOSED WATER METER (SEE SIZE AT SYMBOL)
 - TAPPING SLEEVE AND VALVE W/ THRUST BLOCKING AND ADJUSTABLE VALVE BOX (SEE SIZE AT SYMBOL)
 - CORPORATION STOP (SEE SIZE AT SYMBOL)
 - GATE VALVE WITH ADJUSTABLE VALVE BOX (SEE SIZE AT SYMBOL)
 - REDUCER (SEE SIZE AT SYMBOL)
 - CAP/BEND W/ THRUST BLOCKING (SEE SIZE AT SYMBOL)
 - TEE W/ THRUST BLOCKING (SEE SIZE AT SYMBOL)
 - 45\"/>

- UTILITY DETAILS**
- FIRE DEPARTMENT CONNECTION
 - SANITARY SEWER CLEAN-OUT
 - SANITARY SEWER BUILDING ENTRY (SEE PLUMBING PLANS)
 - CONNECT TO EXISTING SANITARY SEWER STUB OUT
 - POINT OF CONNECTION - ELECTRIC SERVICE (PER ELECTRIC COMPANY REQUIREMENTS)
 - ELECTRIC BUILDING ENTRY (SEE ELECTRIC PLANS)
 - PROPOSED ELECTRIC TRANSFORMER & PAD (PER ELECTRIC COMPANY REQUIREMENTS)
 - TELEPHONE / INTERNET BUILDING ENTRY (SEE ARCH / MEP PLANS)
 - POINT OF CONNECTION - NATURAL GAS SERVICE (PER GAS COMPANY REQUIREMENTS)
 - NATURAL GAS BUILDING ENTRY (SEE PLUMBING PLANS)
 - NATURAL GAS SERVICE BOX (SEE ELECTRIC PLANS)
 - ELECTRIC GENERATOR (SEE ELECTRIC PLANS)
 - SCREEN ENCLOSURE FOR MECHANICAL ENCLOSURE (SEE LANDSCAPE PLANS)
 - SANITARY SEWER MANHOLE TO BE PROVIDED UNDER SEPARATE CONTRACT; WILL BE EXISTING AT TIME OF SITE CONSTRUCTION; CONTRACTOR TO COORDINATE SEWER MAIN EXTENSION W/ OFFSITE DESIGN PLANS AND SCHEDULE; REFER TO NE J STREET UTILITY IMPROVEMENTS, MCE PROJECT # 22-2132 / LSO PROJECT # 22-0069
 - WATER LINE SHALL MAINTAIN 3\"/>

- UTILITY DETAILS**
- FIRE DEPARTMENT CONNECTION
 - SANITARY SEWER CLEAN-OUT
 - CITY OF BENTONVILLE FIRE HYDRANT W/ RETAINER GLANDS STANDARD DETAIL
 - CITY OF BENTONVILLE VALVE BOX, VALVE STEM & TRACKER W/RE INSTALLATION STANDARD DETAIL
 - CITY OF BENTONVILLE METER VAULT FOR 4\"/>

POLK STANLEY WILCOX

801 South Spring Street
 Little Rock, AR 72201
 501.378.0878 office
 509 W. Spring St. Suite 150
 Fayetteville, AR 72701
 479.444.0340 office
 polkstanleywilcox.com

McClendon Consulting Engineers, Inc.
 1580 E STEARNS ST
 BENTONVILLE, AR 72712
 P: 479.443.2377

LANDSCAPE
 OSD
 115 ST. JONES PLACE
 BROCKTON, NY 11217
 P: 917.553.5586

STRUCTURAL
 Martin/Man Consulting Engineers
 9005 SOUTH WALTON BLVD., STE 212
 BENTONVILLE, AR 72712
 P: 479.407.0545

MEP - LOW VOLTAGE
 Henderson Engineers
 6346 LENOVA DRIVE, STE 300
 LENOVA, MS 39214
 P: 815.660.8187

SUSTAINABILITY
 SOM
 224 SOUTH MORGAN AVENUE
 CHICAGO, IL 60604
 P: 312.360.4121

SIEMENS - WAFYNDING
 TWO TWELVE
 239 W. 23RD ST., SUITE 802
 NEW YORK, NY 10001
 P: 212.254.6870

FOOD SERVICE
 JMO HOSPITALITY
 9966 SW FINCH DR., SUITE B210
 THE WOODLANDS, TX 77380
 P: 800.841.2222

WATER FEATURES
 OIL
 2105 S. TOWNE CENTER, SUITE 100
 ANAHEIM, CA 92806
 P: 714.837.4747

IRRIGATION
 W3 DESIGN
 11A ROBINSON MANOR BLVD
 MOORESCOPE, PA 14108
 P: 844.231.7042

PSW Job Number:
939A
 MCE Job Number:
21-2185

STATE OF ARKANSAS
 REGISTERED PROFESSIONAL ENGINEER
 No. 20757
 02/26/2025

AWSOM
 Bentonville, AR

100% CONSTRUCTION DOCUMENTS
 Issue Date:
2.24.2023

NUMBER	DATE	DESCRIPTION
1	3.13.2023	ADDENDUM 1
2	6.9.2023	ADDENDUM 2
3	7.20.2023	ADH SUBMITTAL
4	9.7.2023	PR 010
5	2.6.2024	PR 035
6	5.4.2024	PR 057
7	8.06.2024	PR 060
12	11.12.2024	RFI 495
13	2.26.2025	RFI 584/PR 121

APPROVED FOR CONSTRUCTION

Contents:
UTILITY PLAN (EAST)

LSD #22-0068

C4.02