



AIA[®] Document G709™ – 2018

Proposal Request

PROJECT: *(name and address)*
AWSOM
Bentonville, Arkansas

CONTRACT INFORMATION:
Contract For: General Construction
Date: 11.29.2021

Architect's Project Number: 993A
Proposal Request Number: 100
Proposal Request Date: 11.21.2024

OWNER: *(name and address)*
AWSOM Lands, LLC
PO Box 2030
Bentonville, AR 72712

ARCHITECT: *(name and address)*
Polk Stanley Wilcox
509 W. Spring St., Ste 150
Fayetteville, AR 72701

CONTRACTOR: *(name and address)*
Crossland Construction Company
1800 S. 52nd Street, Suite 410
Rogers, AR 72758

The Owner requests an itemized proposal for changes to the Contract Sum and Contract Time for proposed modifications to the Contract Documents described herein. The Contractor shall submit this proposal within five (5) days or notify the Architect in writing of the anticipated date of submission.

(Insert a detailed description of the proposed modifications to the Contract Documents and, if applicable, attach or reference specific exhibits.)

Refer to the attached Proposal Request 100 Narrative listing revised drawings with brief description of changes.

THIS IS NOT A CHANGE ORDER, A CONSTRUCTION CHANGE DIRECTIVE, OR A DIRECTION TO PROCEED WITH THE WORK DESCRIBED IN THE PROPOSED MODIFICATIONS.

REQUESTED BY THE ARCHITECT:

Mark Herrmann, AIA

PRINTED NAME AND TITLE

PROPOSAL REQUEST 100

BRASS PANELS ADDED TO BACK OF PRECAST AT NORTHWEST PORCH

ISSUED: November 21, 2024

PROJECT: AWSOM
BENTONVILLE, AR

FROM ARCHITECT: POLK STANLEY WILCOX ARCHITECTS
801 SOUTH SPRING ST.
LITTLE ROCK AR 72201

TO CONTRACTOR: **CROSSLAND CONSTRUCTION COMPANY, INC**

PROPOSAL REQUEST 100 BRIEF

Refer to notes below for adding brass panels to the back of the precast panels at Level 1 along gridline A between grids 1 & 2. This revision was initiated to cover up the non-form finished rear face of the precast panels. The addition of the brass panels conflicted with the existing installation of the guardrail along grid A which had to be revised to match the angle of the precast and brass panels.

REVISED DRAWING SHEETS

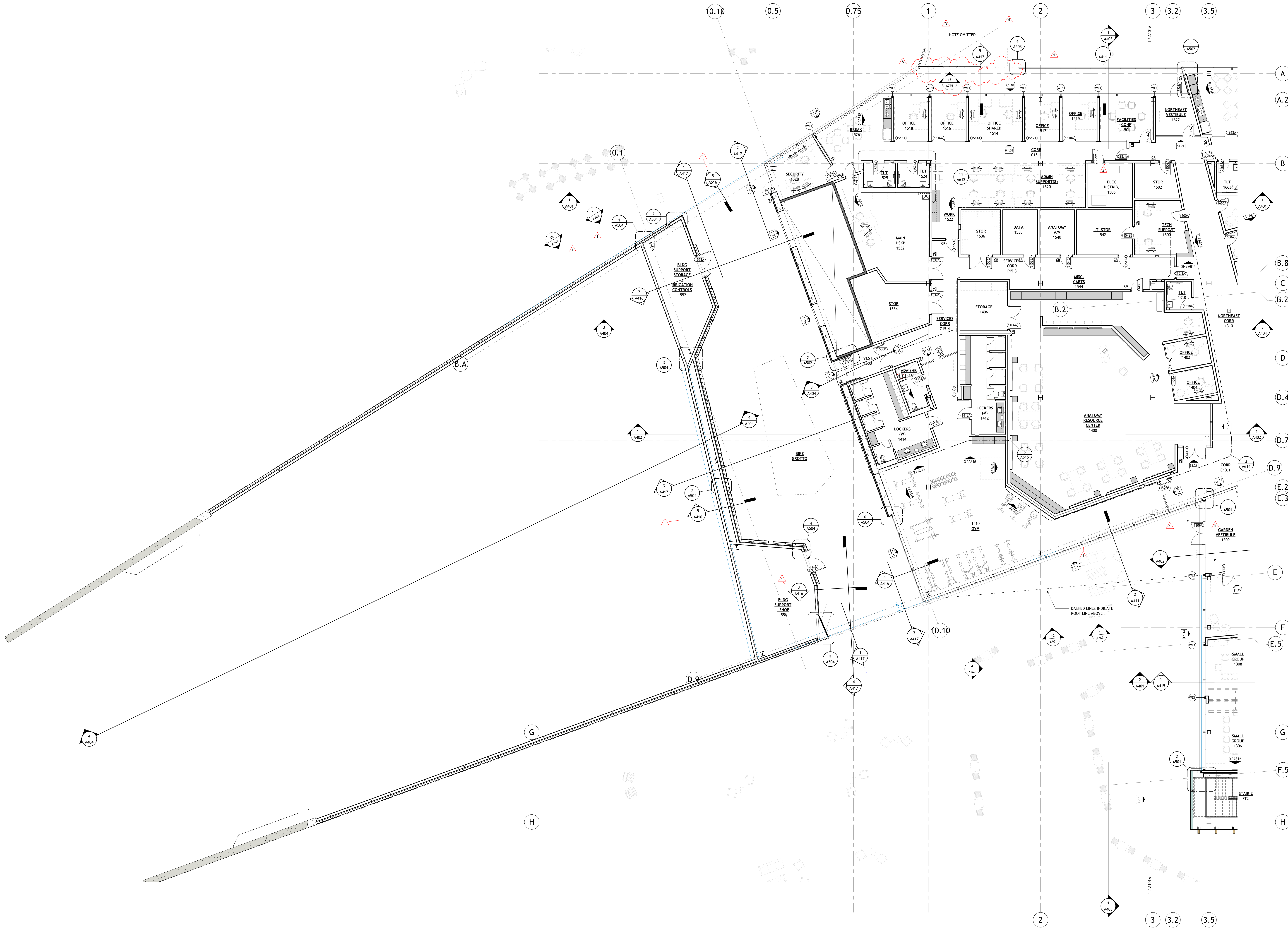
Drawing sheets below with clouded revisions dated 11.21.2024 and revision description PR 100 are included in this Proposal Request

1. A101B NOTE PLAN – LEVEL 1 AREA B
 - a. Added brass wall panels at back of precast panels along grid A between grids 1 & 2
 - b. Added brass wall panel elevation 15/A775
2. A503 PLAN DETAILS – EXTERIOR
 - a. Revised detail 6 L1 – WEST PORCH FIN AT PRECAST to include brass wall panels and trim to back of precast panels
3. A775 BRASS PANEL – BIKE GROTTA
 - a. Added brass panel elevation 15

End of PR 100



REVISIONS		
NUMBER	DATE	DESCRIPTION
1	03.15.2023	ACKENDUUM 1
2	06.09.2023	ACKENDUUM 2
3	04.26.2024	PR 018
4	05.16.2024	PR 082
5	06.03.2024	PR 083
6	11.27.2024	PR 100

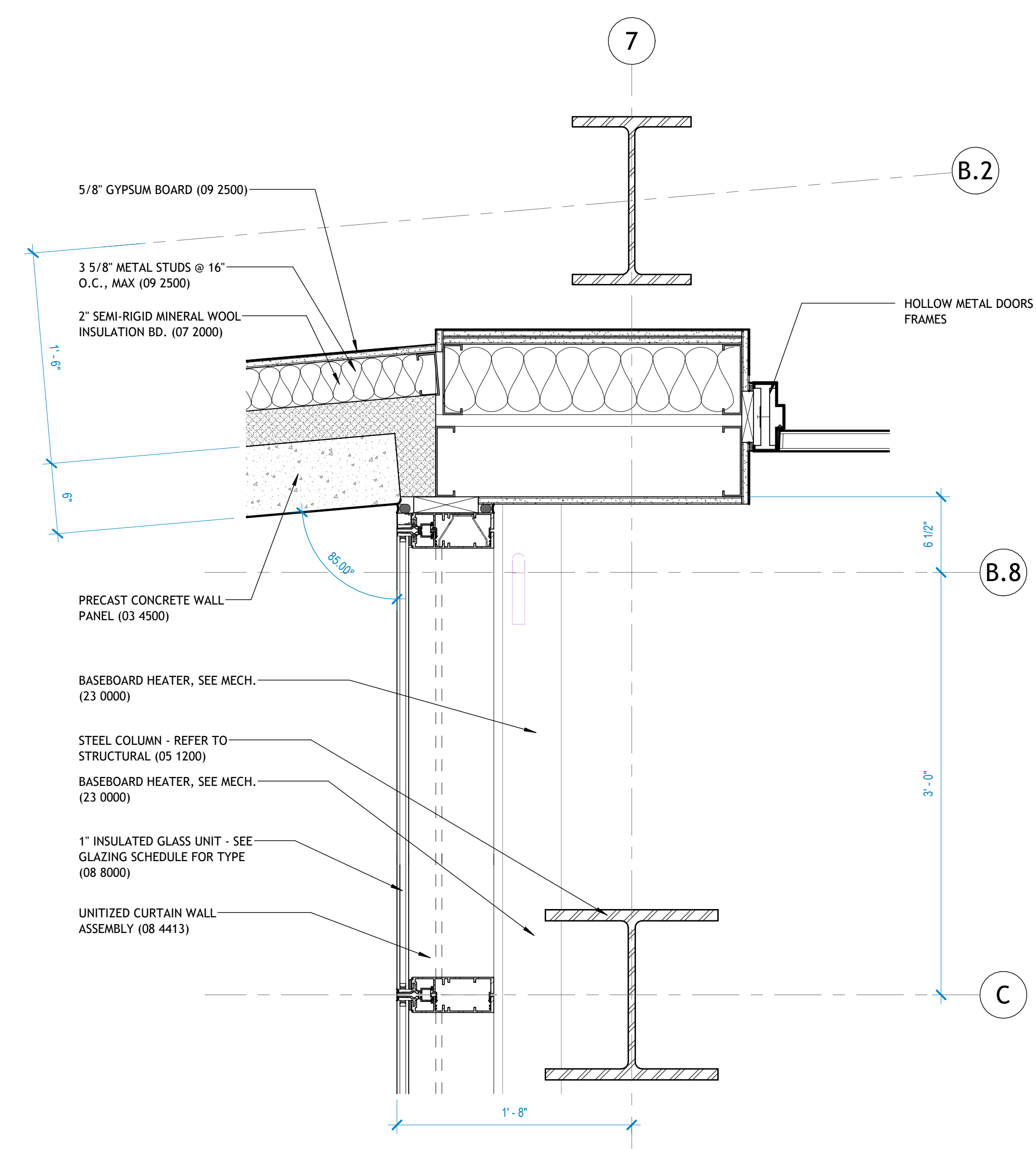


1 | L1 - NOTE PLAN - AREA B
1/8" = 1'-0"

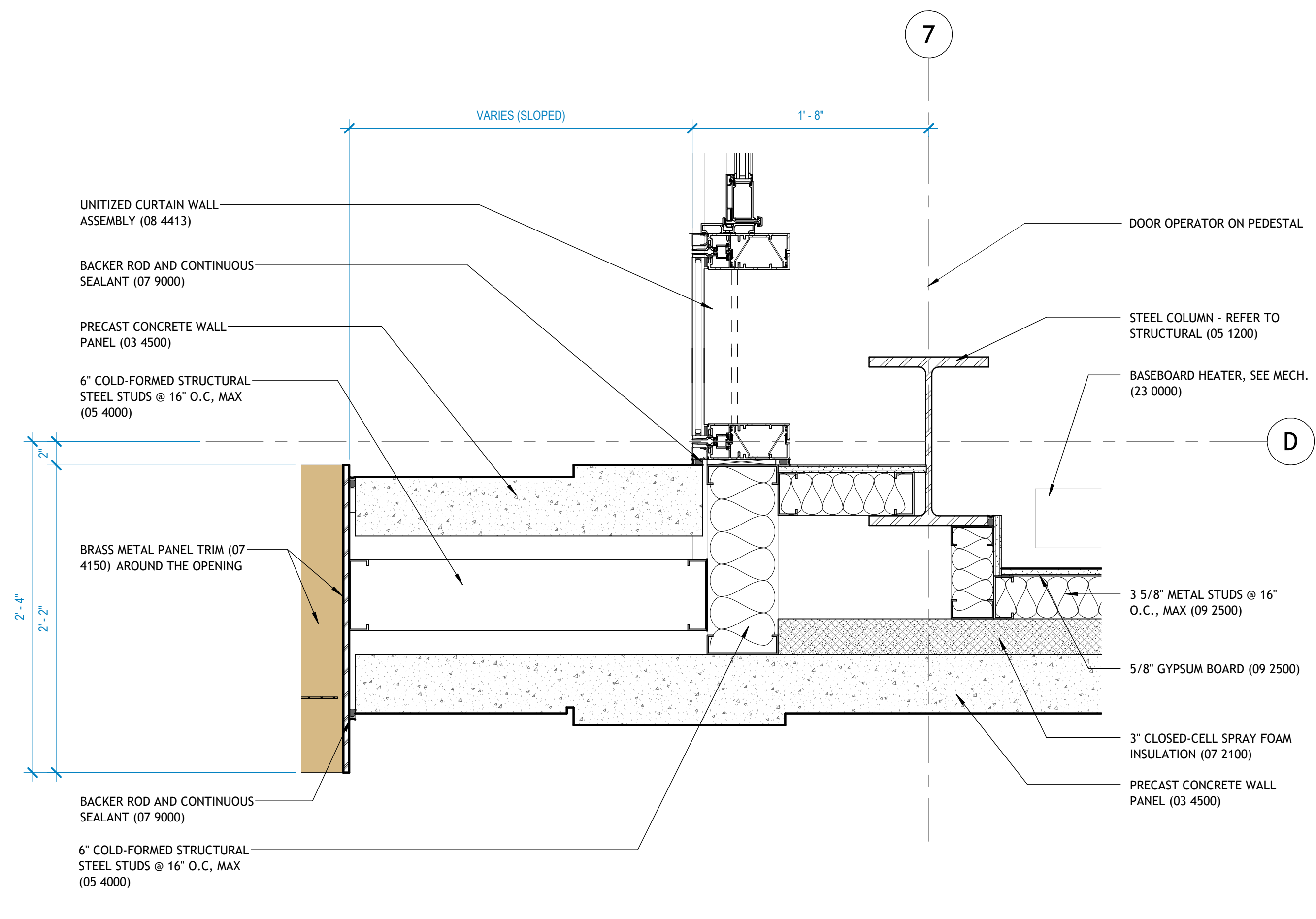
DATE PLOTTED: 02/24/2023 11:15:00 AM



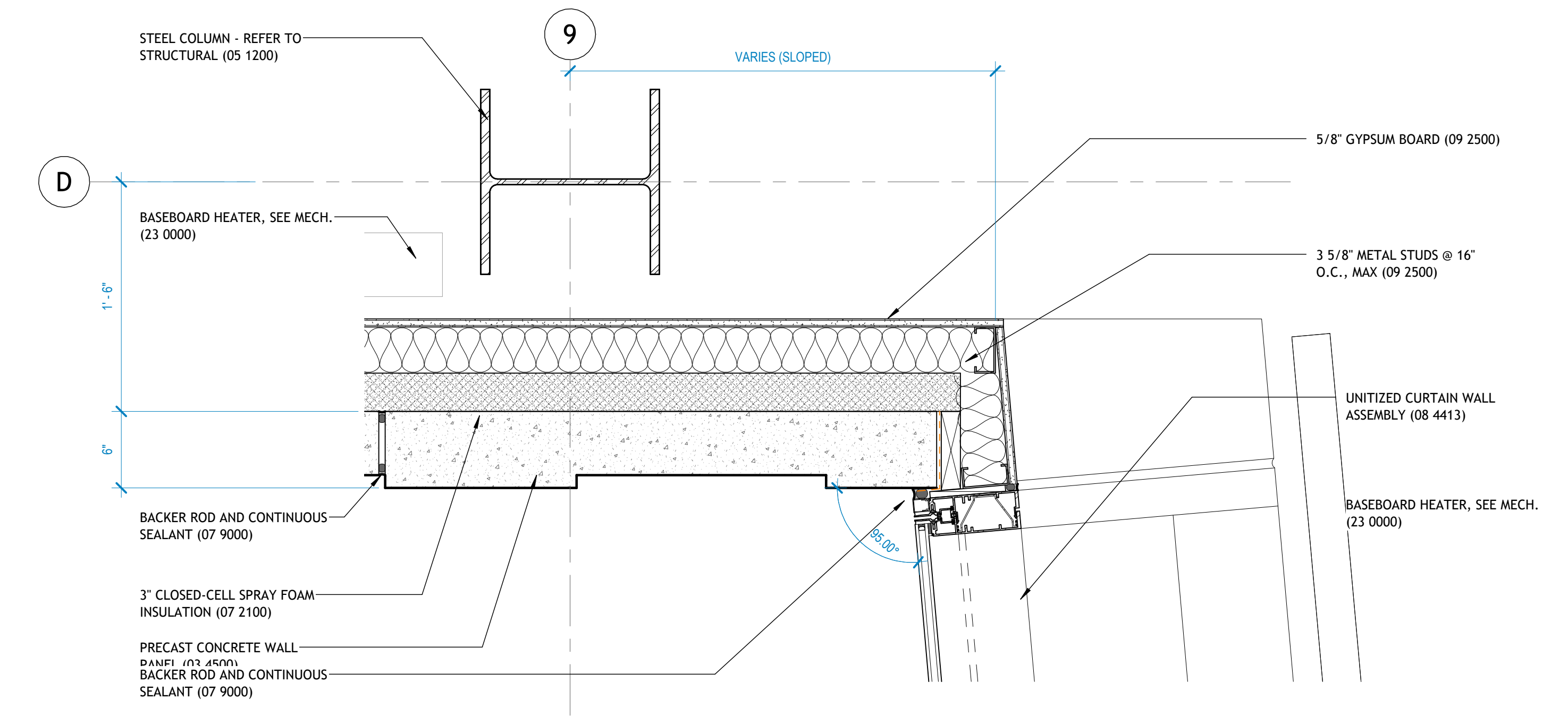
REVISIONS		
NUMBER	DATE	DESCRIPTION
1	05.10.2023	PR: 822
2	11.21.2024	PR: 100



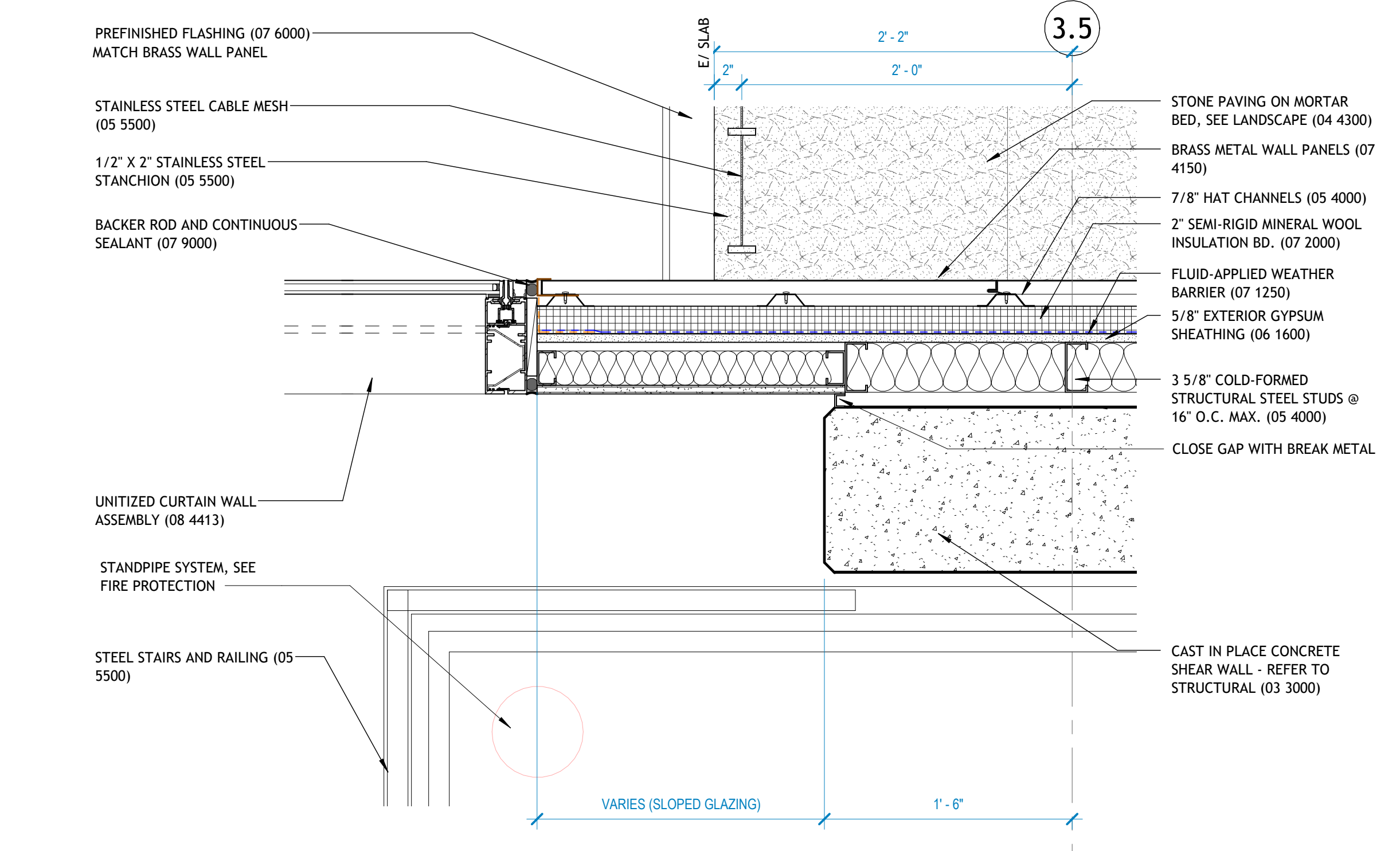
1 | L2 - C25.2 CORRIDOR_NORTH
1 1/2" = 1'-0"



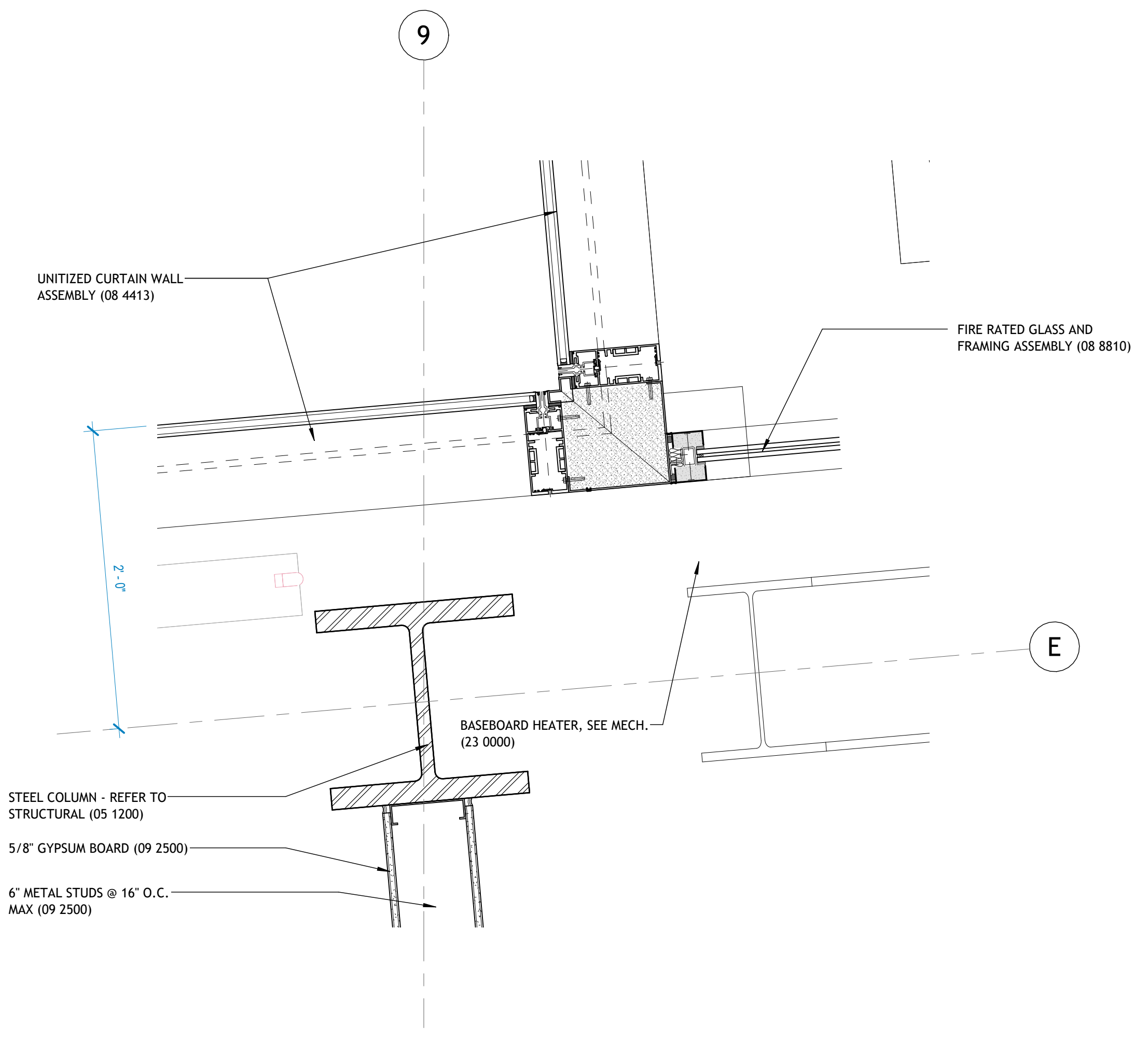
2 | L2 - C25.2 CORRIDOR_SOUTH
1 1/2" = 1'-0"



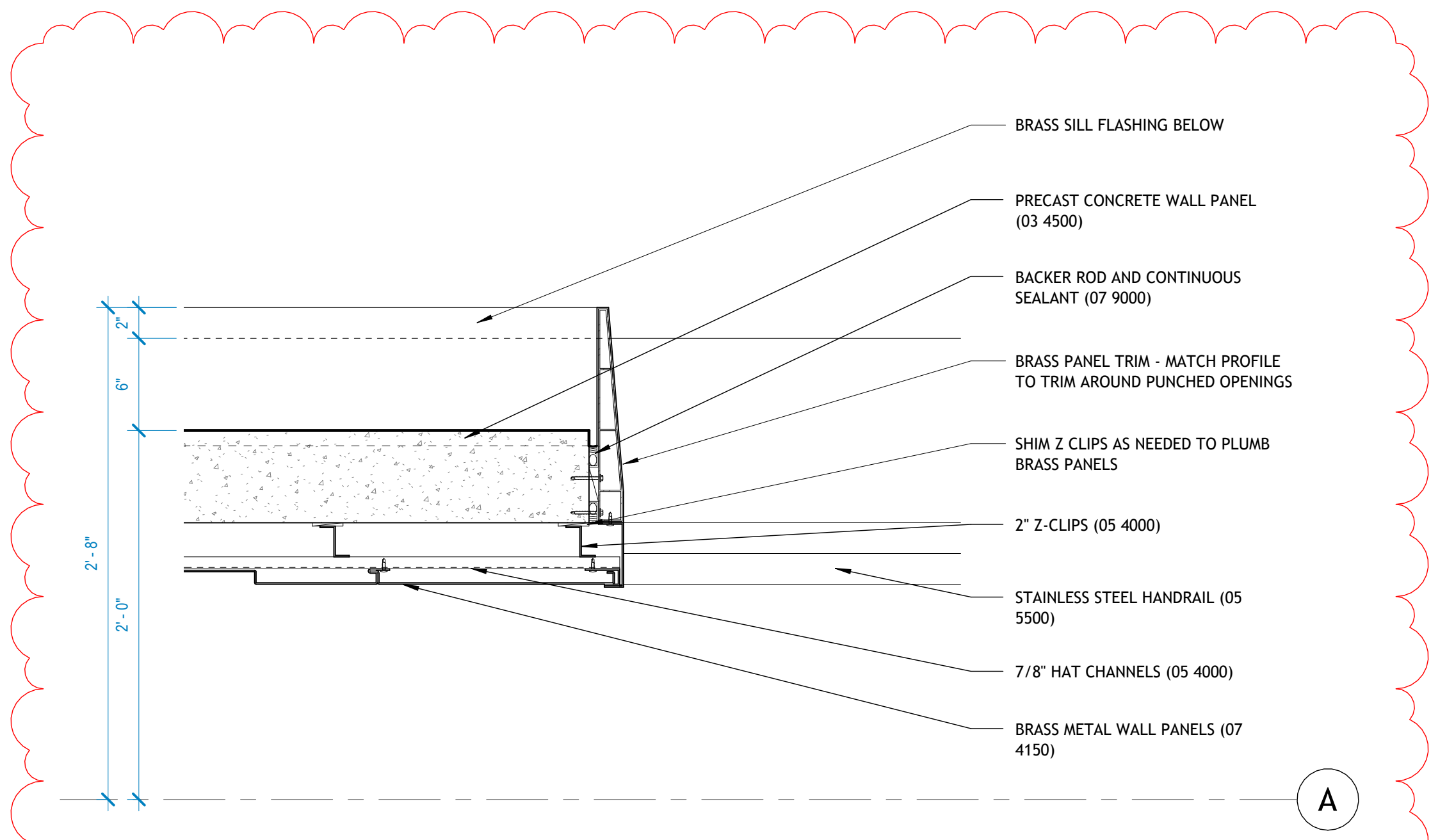
3 | L2 - 1/8" NOTE PLAN, AREA A - Callout 7
1 1/2" = 1'-0"



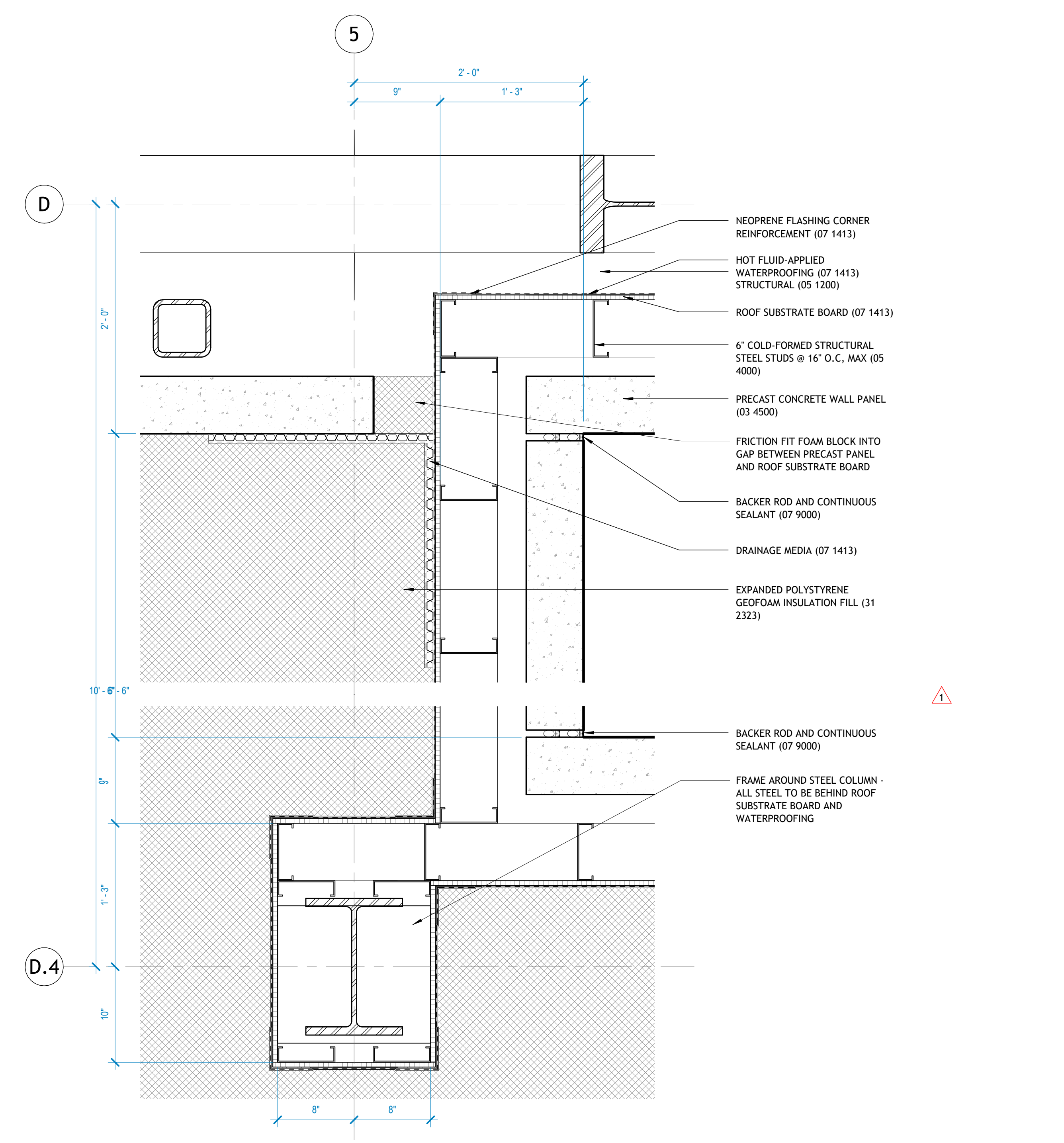
4 | L3 - STAIR 2 NW CORNER
1 1/2" = 1'-0"



5 | L3 - 3300 STUDENT LOUNGE_SW CORNER
1 1/2" = 1'-0"



6 | L1 - WEST PORCH FIN AT PRECAST
1 1/2" = 1'-0"



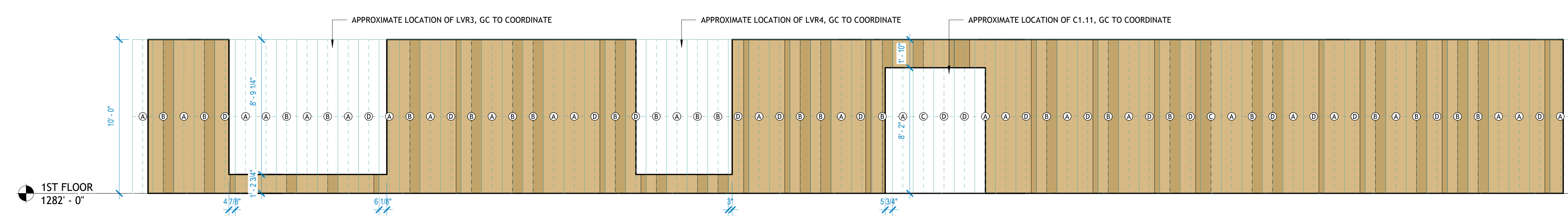
7 | L2 - PLAN DETAIL AT PLAZA
1 1/2" = 1'-0"

BRASS PANEL LEGEND

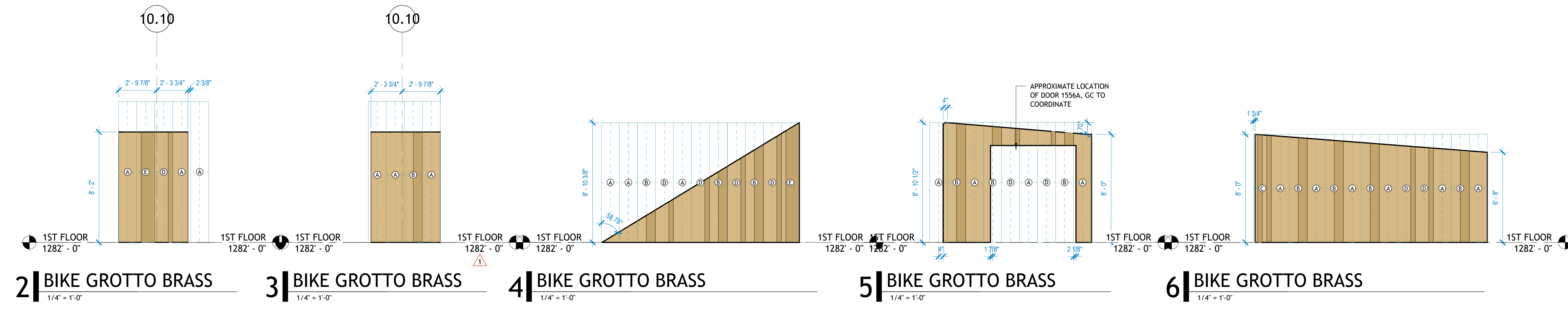
- 0 COLUMN GRID
- A BRASS PATTERN TYPE TAG
- BRASS PANEL MODULE (EDGES AND CENTERLINE)
- RECESSED LIGHT LOCATION

BRASS PANEL GENERAL NOTES

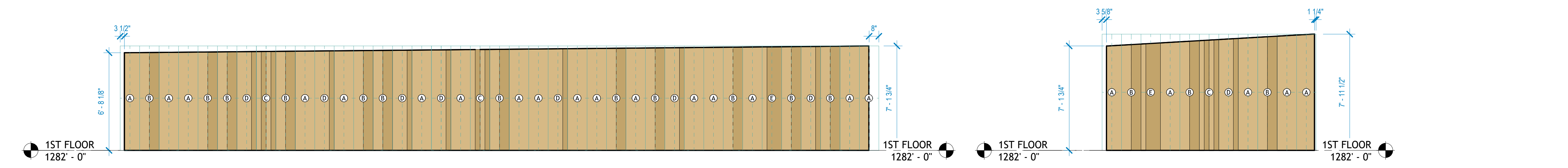
- FIELD VERIFY ALL DIMENSIONS AND ANGLES PRIOR TO FABRICATION
- DIMENSIONS ARE SHOWN TO STRUCTURAL GRIDLINE, BRASS PANEL MODULE GRIDLINE, OR EDGE OF BRASS



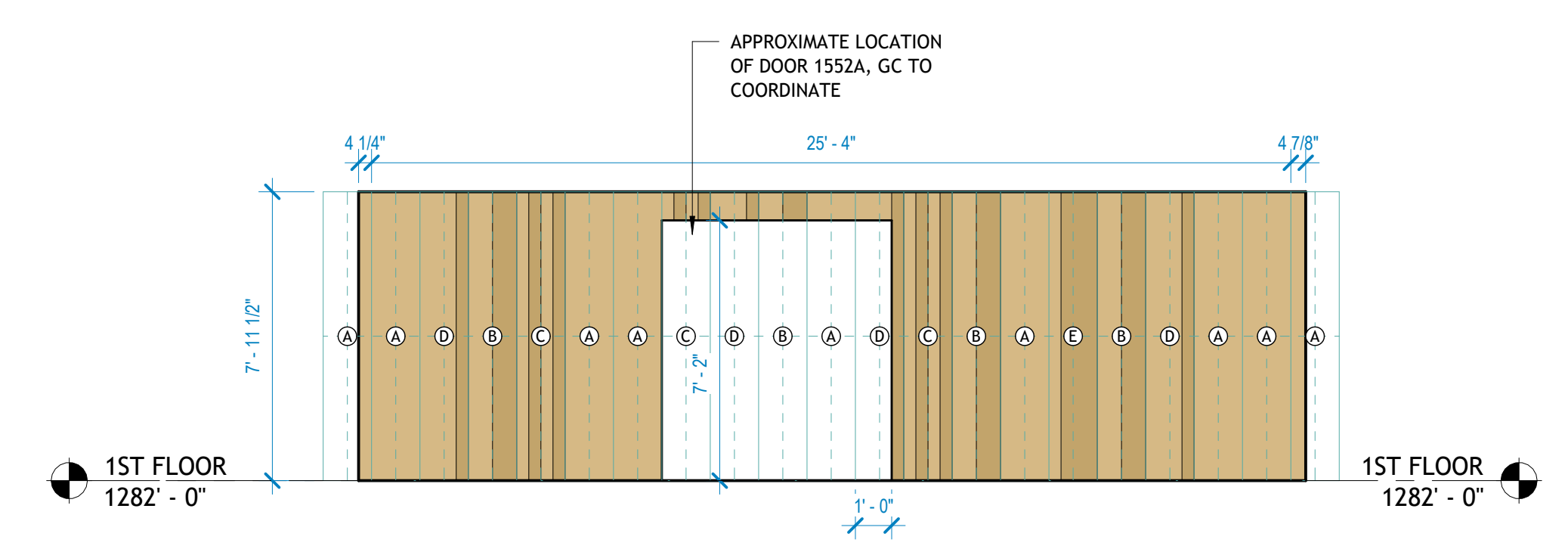
1 BIKE GROTTO BRASS - EAST
1/4" = 1'-0"



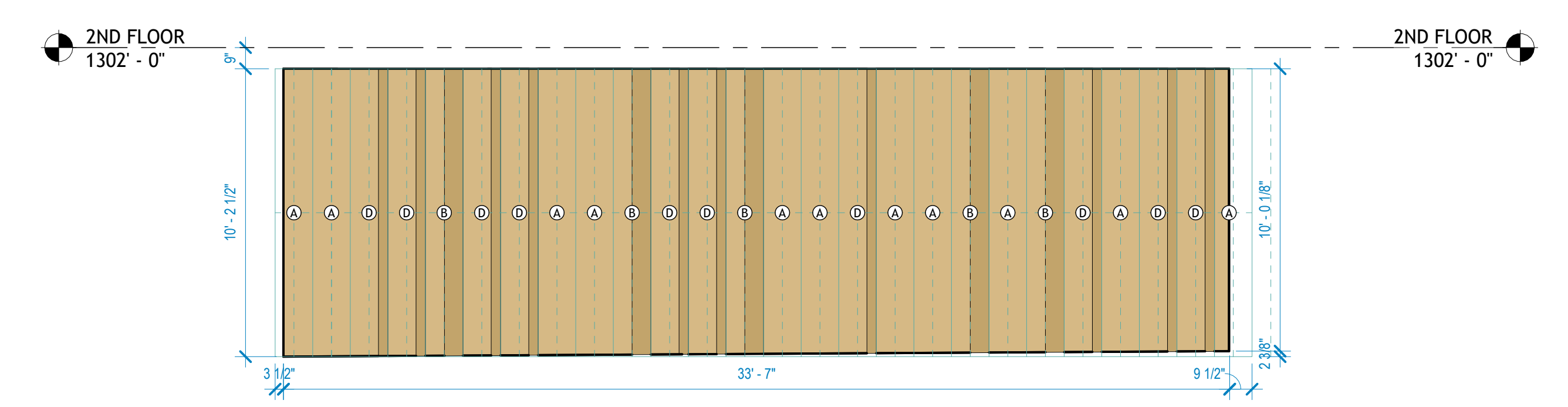
2 BIKE GROTTO BRASS 1/4" = 1'-0"
3 BIKE GROTTO BRASS 1/4" = 1'-0"
4 BIKE GROTTO BRASS 1/4" = 1'-0"
5 BIKE GROTTO BRASS 1/4" = 1'-0"
6 BIKE GROTTO BRASS 1/4" = 1'-0"



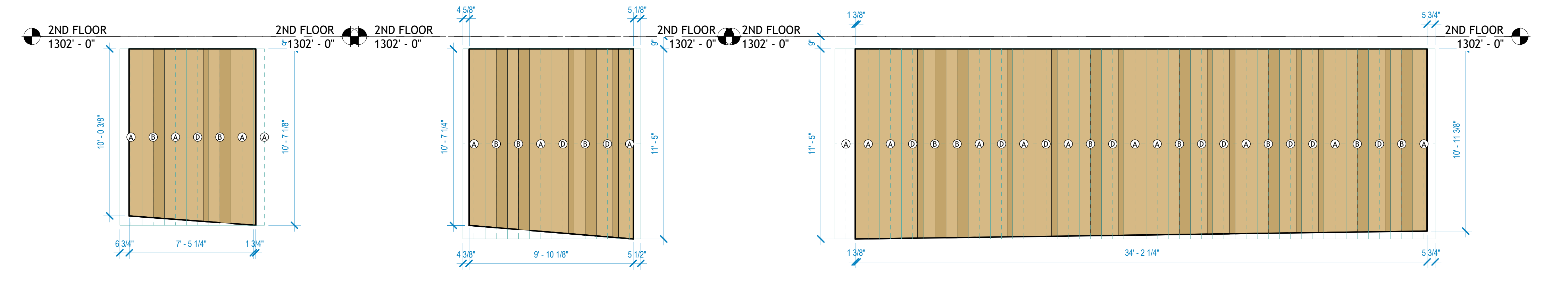
7 BIKE GROTTO BRASS 1/4" = 1'-0"
8 BIKE GROTTO BRASS 1/4" = 1'-0"



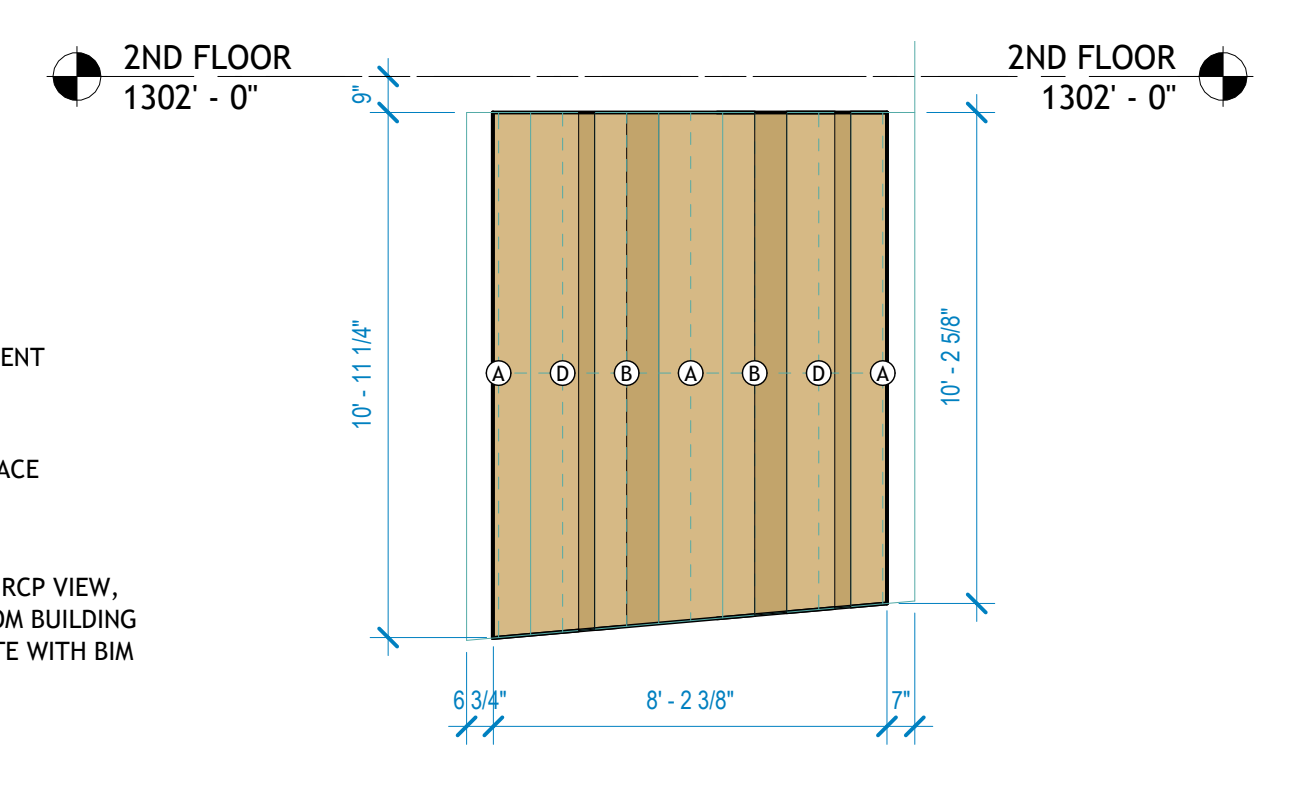
9 BIKE GROTTO BRASS - WEST 3
1/4" = 1'-0"



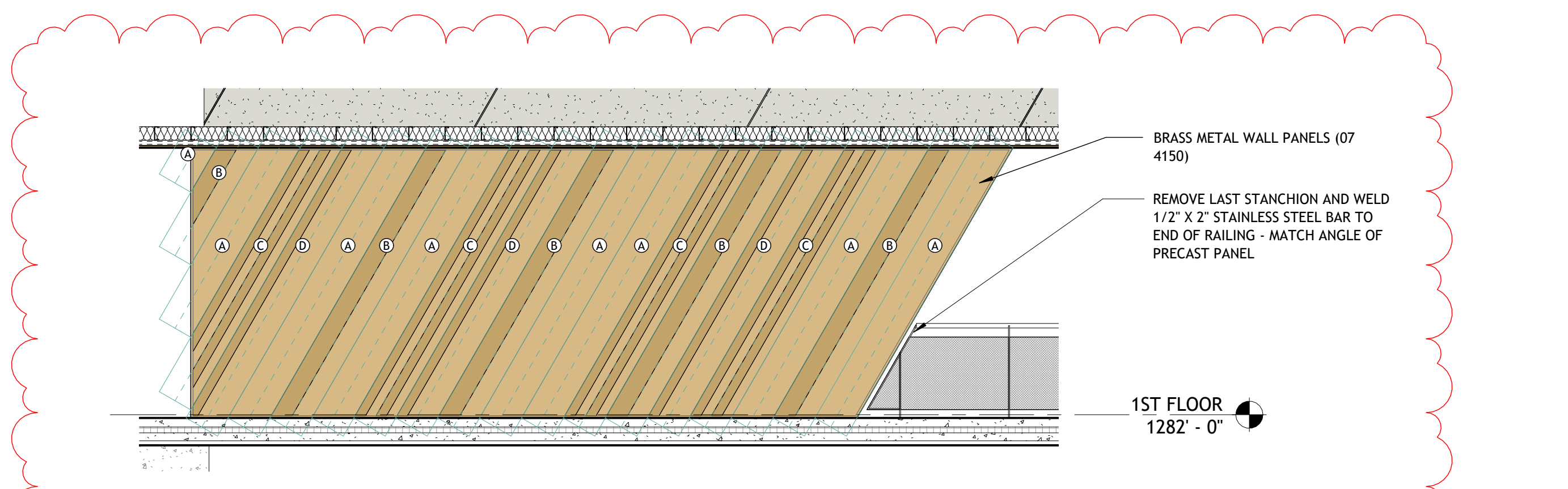
10 OCULUS BRASS 1
1/4" = 1'-0"



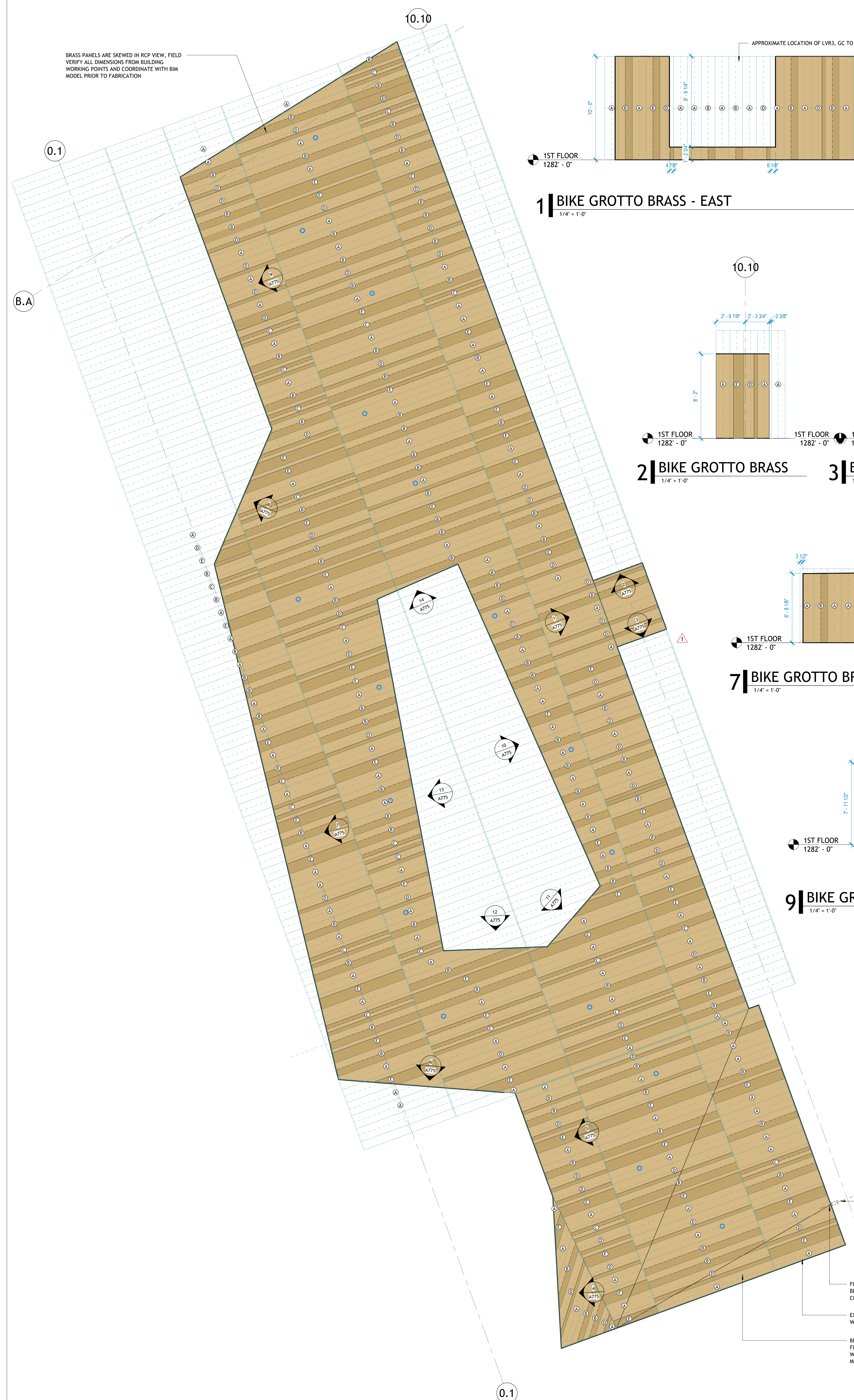
11 OCULUS BRASS 2 1/4" = 1'-0"
12 OCULUS BRASS 3 1/4" = 1'-0"
13 OCULUS BRASS 4 1/4" = 1'-0"



14 OCULUS BRASS 5
1/4" = 1'-0"



15 BRASS WALL PANELS AT NORTH PORCH
1/4" = 1'-0"



BRASS PANELS ARE SKEWED IN RCP VIEW. FIELD VERIFY ALL DIMENSIONS FROM BUILDING WORKING POINTS AND COORDINATE WITH BIM MODEL PRIOR TO FABRICATION

A BIKE GROTTO BRASS PANEL RCP
1/4" = 1'-0"

CENTERLINE OF ADJACENT MULLION

FOLD IN BRASS PANELS TO ALLOW BRASS TO INTERFACE WITH ADJACENT CURTAINWALL

EXTEND BRASS PANELS TO INTERFACE WITH BACK EDGE OF PRECAST

BRASS PANELS ARE SKEWED FROM RCP VIEW. FIELD VERIFY ALL DIMENSIONS FROM BUILDING WORKING POINTS AND COORDINATE WITH BIM MODEL PRIOR TO FABRICATION

BRASS METAL WALL PANELS (07 4150)

REMOVE LAST STANCHION AND WELD 1/2" X 2" STAINLESS STEEL BAR TO END OF RAILING - MATCH ANGLE OF PRECAST PANEL